

6

RN WORKFORCE TREND TABLES

Table 6.1 Age and sex distribution, registered nurses working in NSW, 1997 – 2001

Age group	1997	1998	1999	2000	2001	1997	1998	1999	2000	2001
Female — Survey Respondents										
	No.	No.	No.	No.	No.	%	%	%	%	%
Under 25	817	1,194	1,112	1,091	908	2.1%	2.8%	2.7%	2.6%	2.4%
25-29	3,616	3,721	3,756	3,934	3,211	9.1%	8.7%	9.2%	9.4%	8.6%
30-34	4,303	4,376	4,350	4,485	4,097	10.8%	10.3%	10.6%	10.7%	11.0%
35-39	7,039	7,165	6,452	5,935	4,841	17.7%	16.8%	15.8%	14.1%	13.0%
40-44	8,076	8,205	8,490	8,600	7,378	20.4%	19.3%	20.7%	20.5%	19.8%
45-49	6,235	6,396	6,734	7,287	6,844	15.7%	15.0%	16.5%	17.4%	18.4%
50-54	4,728	4,857	5,096	5,386	4,945	11.9%	11.4%	12.5%	12.8%	13.3%
55-59	2,942	2,934	3,116	3,260	3,186	7.4%	6.9%	7.6%	7.8%	8.6%
60-64	1,392	1,255	1,346	1,463	1,344	3.5%	3.0%	3.3%	3.5%	3.6%
65-69	405	333	356	410	387	1.0%	0.8%	0.9%	1.0%	1.0%
70-74	99	84	106	109	99	0.2%	0.2%	0.3%	0.3%	0.3%
Over 75	19	18	16	20	18	0.0%	0.0%	0.0%	0.0%	0.0%
Total	39,671	40,538	40,930	41,980	37,258	100.0%	100.0%	100.0%	100.0%	100.0%
<i>Age unknown</i>	1,521	1,533	1,462	1,472	1,211					
Male — Survey Respondents										
	No.	No.	No.	No.	No.	%	%	%	%	%
Under 25	73	120	125	112	96	2.1%	3.2%	3.3%	2.9%	2.9%
25-29	378	401	415	402	316	10.7%	10.8%	11.1%	10.5%	9.5%
30-34	433	460	487	531	451	12.2%	12.4%	13.0%	13.9%	13.5%
35-39	623	661	555	495	418	17.6%	17.8%	14.8%	13.0%	12.5%
40-44	830	849	816	833	682	23.5%	22.9%	21.8%	21.8%	20.5%
45-49	648	683	725	771	690	18.3%	18.4%	19.4%	20.2%	20.7%
50-54	308	309	377	411	421	8.7%	8.3%	10.1%	10.8%	12.6%
55-59	153	152	154	165	168	4.3%	4.1%	4.1%	4.3%	5.0%
60-64	60	56	67	71	66	1.7%	1.5%	1.8%	1.9%	2.0%
65-69	25	16	18	23	24	0.7%	0.4%	0.5%	0.6%	0.7%
70-74	4	6	3	0	1	0.1%	0.2%	0.1%	0.0%	0.0%
Over 75	1	0	1	1	0	0.0%	0.0%	0.0%	0.0%	0.0%
Total	3,536	3,713	3,743	3,815	3,333	100.0%	100.0%	100.0%	100.0%	100.0%
<i>Age unknown</i>	46	44	37	34	30					

Table 6.1 cont'd Age and sex distribution, registered nurses working in NSW, 1997 – 2001

Age group	1997	1998	1999	2000	2001	1997	1998	1999	2000	2001
Total — Survey Respondents										
	No.	No.	No.	No.	No.	%	%	%	%	%
Under 25	890	1,314	1,237	1,203	1005	2.1%	3.0%	2.8%	2.6%	2.7%
25-29	3,994	4,122	4,171	4,336	3528	9.2%	9.3%	9.3%	9.5%	9.5%
30-34	4,736	4,836	4,837	5,016	4548	11.0%	10.9%	10.8%	11.0%	12.2%
35-39	7,662	7,826	7,007	6,430	5260	17.7%	17.7%	15.7%	14.0%	14.1%
40-44	8,906	9,054	9,306	9,433	8061	20.6%	20.5%	20.8%	20.6%	21.6%
45-49	6,883	7,079	7,459	8,058	7534	15.9%	16.0%	16.7%	17.6%	20.2%
50-54	5,036	5,166	5,473	5,797	5366	11.7%	11.7%	12.3%	12.7%	14.4%
55-59	3,095	3,086	3,270	3,425	3354	7.2%	7.0%	7.3%	7.5%	9.0%
60-64	1,452	1,311	1,413	1,534	1410	3.4%	3.0%	3.2%	3.3%	3.8%
65-69	430	349	374	433	411	1.0%	0.8%	0.8%	0.9%	1.1%
70-74	103	90	109	109	100	0.2%	0.2%	0.2%	0.2%	0.3%
Over 75	20	18	17	21	18	0.0%	0.0%	0.0%	0.0%	0.0%
Total	43,207	44,251	44,673	45,795	40595	100.0%	100.0%	100.0%	100.0%	100.0%
Age & sex unknown	1,567	1,577	1,499	1,506	2565					

Fig. 6.1 Percentage age and sex distribution, registered nurses working in NSW, 1997 – 2001

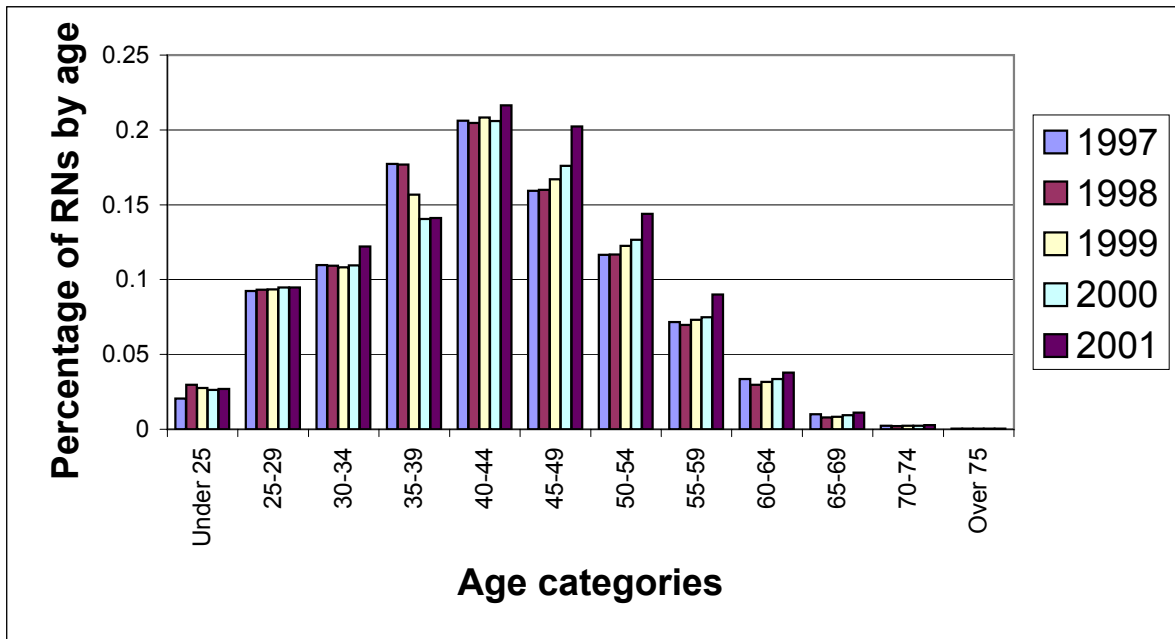


Table 6.2a Usual place of work for female registered nurses working in NSW - main job, 1997 - 2001

Place of work in main job	1997	1998	1999	2000	2001	1997	1998	1999	2000	2001					
	Female — Survey Respondents					No.	No.	No.	No.	No.	%	%	%	%	%
Public sector															
Public hospital	20,039	21,075	21,196	21,663	19,408						50.5%	51.1%	51.7%	50.8%	51.9%
Public day procedure centre	333	211	225	247	218						0.8%	0.5%	0.5%	0.6%	0.6%
Public nursing home or hostel	2,230	2,637	3,034	3,011	2,632						5.6%	6.4%	7.4%	7.1%	7.0%
Public hospice	153	120	116	104	90						0.4%	0.3%	0.3%	0.2%	0.2%
Public community health service	2,749	3,737	3,503	3,743	3,283						6.9%	9.1%	8.5%	8.8%	8.8%
Public multipurpose service	0	156	189	181	159						0.0%	0.4%	0.5%	0.4%	0.4%
Public developmental disability service	680	783	779	775	693						1.7%	1.9%	1.9%	1.8%	1.9%
Defence forces	57	56	49	60	53						0.1%	0.1%	0.1%	0.1%	0.1%
Public school	82	103	97	79	79						0.2%	0.2%	0.2%	0.2%	0.2%
Public tertiary education institution	466	458	489	478	405						1.2%	1.1%	1.2%	1.1%	1.1%
Public corrective services	145	183	196	206	195						0.4%	0.4%	0.5%	0.5%	0.5%
Public other	1,115	351	616	718	575						2.8%	0.9%	1.5%	1.7%	1.5%
Total public sector	28,049	29,870	30,489	31,265	27,790						70.7%	72.4%	74.3%	73.3%	74.3%
Private sector															
Private hospital	4,778	4,806	4,876	5,152	4,601						12.0%	11.6%	11.9%	12.1%	12.3%
Private day procedure centre	334	275	288	327	301						0.8%	0.7%	0.7%	0.8%	0.8%
Private nursing home or hostel	3,267	3,182	2,735	2,864	2,392						8.2%	7.7%	6.7%	6.7%	6.4%
Private hospice	3	7	19	8	3						0.0%	0.0%	0.0%	0.0%	0.0%
Private medical practice	1,206	1,352	1,283	1,356	1,155						3.0%	3.3%	3.1%	3.2%	3.1%
Private community health service	89	317	232	280	217						0.2%	0.8%	0.6%	0.7%	0.6%
Private multipurpose service	0	34	33	41	39						0.0%	0.1%	0.1%	0.1%	0.1%
Private developmental disability service	43	35	29	43	20						0.1%	0.1%	0.1%	0.1%	0.1%
Private practice	1,118	566	435	477	356						2.8%	1.4%	1.1%	1.1%	1.0%
Private school	53	45	37	45	26						0.1%	0.1%	0.1%	0.1%	0.1%
Private tertiary education institution	22	22	17	14	16						0.1%	0.1%	0.0%	0.0%	0.0%
Private mining, industrial or commercial sector	313	577	222	263	185						0.8%	1.4%	0.5%	0.6%	0.5%
Private corrective services	0	15	11	17	10						0.0%	0.0%	0.0%	0.0%	0.0%
Private other	406	171	323	506	301						1.0%	0.4%	0.8%	1.2%	0.8%
Total private sector	11,632	11,404	10,540	11,393	9,622						29.3%	27.6%	25.7%	26.7%	25.7%
Total	39,681	41,274	41,029	42,658	37,412						100.0%	100.0%	100.0%	100.0%	100.0%
<i>Non-response:</i>	<i>1,511</i>	<i>797</i>	<i>1,363</i>	<i>794</i>	<i>1,057</i>										

Table 6.2b Usual place of work for male registered nurses working in NSW - main job, 1997 - 2001

Place of work in main job	1997	1998	1999	2000	2001	1997	1998	1999	2000	2001
	Male — Survey Respondents					%	%	%	%	%
	No.	No.	No.	No.	No.	%	%	%	%	%
Public sector										
Public hospital	2,014	1,998	2,047	2,103	1876	57.8%	54.6%	55.7%	55.9%	57.4%
Public day procedure centre	16	14	5	12	9	0.5%	0.4%	0.1%	0.3%	0.3%
Public nursing home or hostel	108	120	144	141	115	3.1%	3.3%	3.9%	3.7%	3.5%
Public hospice	21	10	10	11	6	0.6%	0.3%	0.3%	0.3%	0.2%
Public community health service	301	455	412	447	367	8.6%	12.4%	11.2%	11.9%	11.2%
Public multipurpose service	0	20	20	16	29	0.0%	0.5%	0.5%	0.4%	0.9%
Public developmental disability service	279	327	315	297	243	8.0%	8.9%	8.6%	7.9%	7.4%
Defence forces	12	13	7	14	11	0.3%	0.4%	0.2%	0.4%	0.3%
Public school	1	4	5	2	2	0.0%	0.1%	0.1%	0.1%	0.1%
Public tertiary education institution	59	63	64	50	41	1.7%	1.7%	1.7%	1.3%	1.3%
Public corrective services	47	54	54	59	52	1.3%	1.5%	1.5%	1.6%	1.6%
Public other	95	49	73	80	68	2.7%	1.3%	2.0%	2.1%	2.1%
Total public sector	2,953	3,127	3,156	3,232	2819	84.8%	85.5%	85.9%	85.9%	86.2%
Private sector										
Private hospital	243	276	293	281	242	7.0%	7.5%	8.0%	7.5%	7.4%
Private day procedure centre	7	4	5	7	7	0.2%	0.1%	0.1%	0.2%	0.2%
Private nursing home or hostel	143	148	128	138	121	4.1%	4.0%	3.5%	3.7%	3.7%
Private hospice	2	1	0	0	0	0.1%	0.0%	0.0%	0.0%	0.0%
Private medical practice	13	14	5	9	11	0.4%	0.4%	0.1%	0.2%	0.3%
Private community health service	4	13	7	11	5	0.1%	0.4%	0.2%	0.3%	0.2%
Private multipurpose service	0	0	1	2	4	0.0%	0.0%	0.0%	0.1%	0.1%
Private developmental disability service	6	8	6	4	5	0.2%	0.2%	0.2%	0.1%	0.2%
Private practice	60	23	19	19	15	1.7%	0.6%	0.5%	0.5%	0.5%
Private school	0	0	1	2	3	0.0%	0.0%	0.0%	0.1%	0.1%
Private tertiary education institution	7	4	5	7	4	0.2%	0.1%	0.1%	0.2%	0.1%
Private mining, industrial or commercial sector	24	28	20	19	17	0.7%	0.8%	0.5%	0.5%	0.5%
Private corrective services	0	2	3	2	1	0.0%	0.1%	0.1%	0.1%	0.0%
Private other	22	10	24	28	15	0.6%	0.3%	0.7%	0.7%	0.5%
Total private sector	531	531	517	529	450	15.2%	14.5%	14.1%	14.1%	13.8%
Total	3,484	3,658	3,673	3,761	3269	100.0%	100.0%	100.0%	100.0%	100.0%
Non-response:	98	99	107	88	94					

Table 6.2c Usual place of work for registered nurses working in NSW - main job, 1997 - 2001

Place of work in main job	1997	1998	1999	2000	2001	1997	1998	1999	2000	2001
	Total — Survey Respondents					%	%	%	%	%
	No.	No.	No.	No.	No.	%	%	%	%	%
Public sector										
Public hospital	20,039	21,075	21,196	23,766	21934	50.5%	51.1%	51.7%	51.2%	52.3%
Public day procedure centre	333	211	225	259	235	0.8%	0.5%	0.5%	0.6%	0.6%
Public nursing home or hostel	2,230	2,637	3,034	3,152	2834	5.6%	6.4%	7.4%	6.8%	6.8%
Public hospice	153	120	116	115	100	0.4%	0.3%	0.3%	0.2%	0.2%
Public community health service	2,749	3,737	3,503	4,190	3778	6.9%	9.1%	8.5%	9.0%	9.0%
Public multipurpose service	0	156	189	197	191	0.0%	0.4%	0.5%	0.4%	0.5%
Public developmental disability service	680	783	779	1,072	962	1.7%	1.9%	1.9%	2.3%	2.3%
Defence forces	57	56	49	74	65	0.1%	0.1%	0.1%	0.2%	0.2%
Public school	82	103	97	81	84	0.2%	0.2%	0.2%	0.2%	0.2%
Public tertiary education institution	466	458	489	528	457	1.2%	1.1%	1.2%	1.1%	1.1%
Public corrective services	145	183	196	265	256	0.4%	0.4%	0.5%	0.6%	0.6%
Public other	1,115	351	616	798	668	2.8%	0.9%	1.5%	1.7%	1.6%
Total public sector	28,049	29,870	30,489	34,497	31564	70.7%	72.4%	74.3%	74.3%	75.2%
Private sector										
Private hospital	4,778	4,806	4,876	5,433	4997	12.0%	11.6%	11.9%	11.7%	11.9%
Private day procedure centre	334	275	288	334	318	0.8%	0.7%	0.7%	0.7%	0.8%
Private nursing home or hostel	3,267	3,182	2,735	3,002	2605	8.2%	7.7%	6.7%	6.5%	6.2%
Private hospice	3	7	19	8	3	0.0%	0.0%	0.0%	0.0%	0.0%
Private medical practice	1,206	1,352	1,283	1,365	1204	3.0%	3.3%	3.1%	2.9%	2.9%
Private community health service	89	317	232	291	231	0.2%	0.8%	0.6%	0.6%	0.6%
Private multipurpose service	0	34	33	43	44	0.0%	0.1%	0.1%	0.1%	0.1%
Private developmental disability service	43	35	29	47	25	0.1%	0.1%	0.1%	0.1%	0.1%
Private practice	1,118	566	435	496	385	2.8%	1.4%	1.1%	1.1%	0.9%
Private school	53	45	37	47	29	0.1%	0.1%	0.1%	0.1%	0.1%
Private tertiary education institution	22	22	17	21	21	0.1%	0.1%	0.0%	0.0%	0.1%
Private mining/industrial/comm. sector	313	577	222	282	209	0.8%	1.4%	0.5%	0.6%	0.5%
Private corrective services	0	15	11	19	11	0.0%	0.0%	0.0%	0.0%	0.0%
Private other	406	171	323	534	329	1.0%	0.4%	0.8%	1.2%	0.8%
Total private sector	11,632	11,404	10,540	11,922	10411	29.3%	27.6%	25.7%	25.7%	24.8%
Total	39,681	41,274	41,029	46,419	41975	100.0%	100.0%	100.0%	100.0%	100.0%
<i>Non-response:</i>	<i>1,511</i>	<i>797</i>	<i>1,363</i>	<i>882</i>	<i>1,185</i>					

Trends in the Registered Nurse Workforce 1997 - 2001
Table 6.3a: Work location of female registered nurses working in NSW, by Area Health Service - main job, 1997-2001

Place of work in main job	1997	1998	1999	2000	2001	1997	1998	1999	2000	2001
	Female — Survey Respondents									
	No.	No.	No.	No.	No.	%	%	%	%	%
Health Service										
Central Coast	1,480	1,686	1,762	1815	1619	4.5%	4.3%	4.5%	4.4%	6.1%
Central Sydney	2,515	3,258	3,176	3328	2830	7.7%	8.3%	8.1%	8.1%	10.7%
Hunter	3,120	3,786	3,799	3885	3483	9.6%	9.7%	9.7%	9.5%	13.2%
Illawarra	1,483	1,751	1,781	1875	1678	4.5%	4.5%	4.5%	4.6%	6.4%
Northern Sydney	4,734	5,639	5,620	5924	5230	14.5%	14.4%	14.3%	14.5%	19.8%
South Eastern Sydney	4,375	5,383	5,490	5701	5026	13.4%	13.8%	14.0%	13.9%	19.0%
South Western Sydney	2,376	2,880	2,927	3046	2584	7.3%	7.4%	7.4%	7.4%	9.8%
Wentworth	1,253	1,489	1,472	1614	1438	3.8%	3.8%	3.7%	3.9%	5.4%
Western Sydney	3,141	3,843	3,911	4116	3624	9.6%	9.8%	9.9%	10.0%	13.7%
Total Metropolitan Areas	24,477	29,715	29,938	31304	27512	75.0%	75.9%	76.1%	76.4%	104.1%
Far West	227	255	283	260	226	0.7%	0.7%	0.7%	0.6%	0.9%
Greater Murray	1,549	1,757	1,680	1,731	1561	4.7%	4.5%	4.3%	4.2%	5.9%
Macquarie	549	614	580	634	557	1.7%	1.6%	1.5%	1.5%	2.1%
Mid North Coast	1,049	1,212	1,551	1,616	1435	3.2%	3.1%	3.0%	3.9%	5.4%
Mid Western	1,168	1,346	1,342	1,354	1276	3.6%	3.4%	3.4%	3.3%	4.8%
New England	1,003	1,204	1,252	1,213	1068	3.1%	3.1%	3.2%	3.0%	4.0%
Northern Rivers	1,690	1,942	1,660	1,705	1464	5.2%	5.0%	5.1%	4.2%	5.5%
Southern	896	1,039	1,007	1,082	922	2.7%	2.7%	2.6%	2.6%	3.5%
Total Rural Health Services	8,131	9,369	9,355	9595	8509	24.9%	23.9%	23.8%	23.4%	32.2%
Interstate	41	48	47	92	58	0.1%	0.1%	0.1%	0.2%	0.2%
Total	32,649	39,132	39,340	40991	36079	100.0%	100.0%	100.0%	100.0%	100.0%
Non response:	8,543	2,939	3,052	2461	2390					

Note: postcode text fields for 1998, 1999, 2000 coded, so response increases for those years

Table 6.3b: Work location of male registered nurses working in NSW, by Area Health Service - main job, 1997-2001

Place of work in main job	1997	1998	1999	2000	2001	1997	1998	1999	2000	2001
Male — Survey Respondents										
	No.	No.	No.	No.	No.	%	%	%	%	%
Health Service										
Central Coast	138	164	175	175	157	4.9%	4.7%	5.0%	4.8%	5.6%
Central Sydney	270	367	346	375	324	9.7%	10.5%	9.9%	10.4%	9.5%
Hunter	345	412	441	455	405	12.3%	11.8%	12.6%	12.6%	13.4%
Illawarra	106	133	128	132	115	3.8%	3.8%	3.6%	3.7%	4.2%
Northern Sydney	307	373	368	398	338	11.0%	10.7%	10.5%	11.0%	9.5%
South Eastern Sydney	341	444	492	466	392	12.2%	12.7%	14.0%	12.9%	10.1%
South Western Sydney	176	234	218	240	185	6.3%	6.7%	6.2%	6.6%	7.3%
Wentworth	127	143	140	158	124	4.5%	4.1%	4.0%	4.4%	6.5%
Western Sydney	317	417	425	425	383	11.3%	12.0%	12.1%	11.8%	12.5%
Total Metropolitan Areas	2,127	2,687	2,733	2824	2423	76.1%	77.1%	77.9%	78.1%	78.5%
Far West	19	21	20	20	22	0.7%	0.6%	0.6%	0.6%	0.7%
Greater Murray	61	73	74	82	69	2.2%	2.1%	2.1%	2.3%	1.6%
Macquarie	22	30	25	25	13	0.8%	0.9%	0.7%	0.7%	0.3%
Mid North Coast	102	124	166	174	159	3.6%	3.6%	3.6%	4.8%	5.0%
Mid Western	113	130	125	124	111	4.0%	3.7%	3.6%	3.4%	3.4%
New England	53	68	67	58	57	1.9%	2.0%	1.9%	1.6%	1.6%
Northern Rivers	194	223	190	183	173	6.9%	6.4%	6.6%	5.1%	5.2%
Southern	102	125	108	116	96	3.6%	3.6%	3.1%	3.2%	3.1%
Total Rural Health Services	666	794	775	782	700	23.8%	22.8%	22.1%	21.6%	20.9%
Interstate	3	2	2	10	4	0.1%	0.1%	0.1%	0.3%	0.6%
Total	2,796	3,483	3,510	3616	3127	100.0%	100.0%	100.0%	100.0%	100.0%
<i>Non response:</i>	786	274	270	233	236					

Note: postcode text fields for 1998, 1999, 2000 coded, so response increases for those years

Trends in the Registered Nurse Workforce 1997 - 2001

Table 6.3c: Work location of registered nurses working in NSW, by Area Health Service - main job, 1997-2001

Place of work in main job	1997	1998	1999	2000	2001	1997	1998	1999	2000	2001					
	Total — Survey Respondents					No.	No.	No.	No.	No.	%	%	%	%	%
Health Service															
Central Coast	1,618	1,850	1,937	1990	1844						4.6%	4.3%	4.5%	4.5%	4.6%
Central Sydney	2,785	3,625	3,522	3703	3248						7.9%	8.5%	8.2%	8.3%	8.0%
Hunter	3,465	4,198	4,240	4340	4015						9.8%	9.9%	9.9%	9.7%	9.9%
Illawarra	1,589	1,884	1,909	2007	1858						4.5%	4.4%	4.5%	4.5%	4.6%
Northern Sydney	5,041	6,012	5,988	6322	5753						14.2%	14.1%	14.0%	14.2%	14.2%
South Eastern Sydney	4,716	5,827	5,982	6167	5590						13.3%	13.7%	14.0%	13.8%	13.8%
South Western Sydney	2,552	3,114	3,145	3286	2862						7.2%	7.3%	7.3%	7.4%	7.1%
Wentworth	1,380	1,632	1,612	1772	1605						3.9%	3.8%	3.8%	4.0%	4.0%
Western Sydney	3,458	4,260	4,336	4541	4140						9.8%	10.0%	10.1%	10.2%	10.2%
Total Metropolitan Areas	26,604	32,402	32,671	34128	30915						75.1%	76.0%	76.2%	76.5%	76.4%
Far West	246	276	303	280	254						0.7%	0.6%	0.7%	0.6%	0.6%
Greater Murray	1,610	1,830	1,754	1813	1670						4.5%	4.3%	4.1%	4.1%	4.1%
Macquarie	571	644	605	659	585						1.6%	1.5%	1.4%	1.5%	1.4%
Mid North Coast	1,151	1,336	1,717	1790	1646						3.2%	3.1%	3.1%	4.0%	4.1%
Mid Western	1,281	1,476	1,467	1478	1421						3.6%	3.5%	3.4%	3.3%	3.5%
New England	1,056	1,272	1,319	1271	1159						3.0%	3.0%	3.1%	2.8%	2.9%
Northern Rivers	1,884	2,165	1,850	1888	1702						5.3%	5.1%	5.2%	4.2%	4.2%
Southern	998	1,164	1,115	1198	1050						2.8%	2.7%	2.6%	2.7%	2.6%
Total Rural Health Services	8,797	10,163	10,130	10377	9487						24.8%	23.8%	23.6%	23.3%	23.4%
Interstate	44	50	49	102	65						0.1%	0.1%	0.1%	0.2%	0.2%
Total	35,445	42,615	42,852	44607	40467						100.0%	100.0%	100.0%	100.0%	100.0%
Non response:	9,329	3,213	3,322	2694	2693										

Note: postcode text fields for 1998, 1999, 2000, 2001 coded, so response increases for those years

Table 6.4 Total hours per week, registered nurses working in NSW, 1997 – 2001

Hours per week	1997	1998	1999	2000	2001	1997	1998	1999	2000	2001
Female — Survey Respondents										
	No.	No.	No.	No.	No.	%	%	%	%	%
1-9	723	1,404	1,319	1,315	1142	2.3%	3.4%	3.2%	3.1%	3.0%
10-19	2,687	4,565	4,494	4,518	4014	8.6%	11.2%	10.9%	10.7%	10.7%
20-29	5,348	8,772	8,885	9,165	7994	17.1%	21.5%	21.5%	21.7%	21.2%
30-34	3,086	3,876	4,277	4,599	4303	9.9%	9.5%	10.4%	10.9%	11.4%
35-39	6,330	7,424	7,048	6,969	6131	20.2%	18.2%	17.1%	16.5%	16.3%
40-44	8,697	10,213	9,908	10,259	8852	27.8%	25.1%	24.0%	24.2%	23.5%
45-49	1,235	1,673	1,945	2,022	1962	3.9%	4.1%	4.7%	4.8%	5.2%
50-59	1,197	1,384	1,720	1,760	1731	3.8%	3.4%	4.2%	4.2%	4.6%
60-69	758	479	574	640	625	2.4%	1.2%	1.4%	1.5%	1.7%
70+	1,218	930	1,124	1,073	923	3.9%	2.3%	2.7%	2.5%	2.4%
Total	31,279	40,720	41,294	42,320	37677	100.0%	100.0%	100.0%	100.0%	100.0%
<i>Hours not reported</i>	9,913	1,351	1,098	1,132	792					
<i>Note: Higher non response in 1997</i>										
Male — Survey Respondents										
	No.	No.	No.	No.	No.	%	%	%	%	%
1-9	29	55	45	40	38	1.0%	1.5%	1.2%	1.1%	1.2%
10-19	60	85	85	85	81	2.2%	2.3%	2.3%	2.3%	2.5%
20-29	140	215	237	243	204	5.0%	5.9%	6.4%	6.4%	6.2%
30-34	144	189	196	220	191	5.2%	5.2%	5.3%	5.8%	5.8%
35-39	978	1,198	1,124	1,109	921	35.1%	32.9%	30.4%	29.4%	28.0%
40-44	947	1,249	1,240	1,231	1143	34.0%	34.3%	33.5%	32.7%	34.7%
45-49	169	247	297	308	271	6.1%	6.8%	8.0%	8.2%	8.2%
50-59	155	215	255	298	247	5.6%	5.9%	6.9%	7.9%	7.5%
60-69	67	85	85	104	92	2.4%	2.3%	2.3%	2.8%	2.8%
70+	98	106	136	130	107	3.5%	2.9%	3.7%	3.5%	3.2%
Total	2,787	3,644	3,700	3,768	3295	100.0%	100.0%	100.0%	100.0%	100.0%
<i>Hours not reported</i>	795	113	80	81	68					
<i>Note: Higher non response in 1997</i>										
Total — Survey Respondents										
	No.	No.	No.	No.	No.	%	%	%	%	%
1-9	752	1,459	1,364	1,355	1216	2.2%	3.3%	3.0%	2.9%	2.9%
10-19	2,747	4,650	4,579	4,603	4208	8.1%	10.5%	10.2%	10.0%	10.0%
20-29	5,488	8,987	9,123	9,408	8471	16.1%	20.3%	20.3%	20.4%	20.0%
30-34	3,230	4,065	4,473	4,819	4655	9.5%	9.2%	9.9%	10.5%	11.0%
35-39	7,308	8,622	8,172	8,078	7258	21.5%	19.4%	18.2%	17.5%	17.2%
40-44	9,644	11,462	11,149	11,490	10320	28.3%	25.8%	24.8%	24.9%	24.4%
45-49	1,404	1,920	2,242	2,330	2299	4.1%	4.3%	5.0%	5.1%	5.4%
50-59	1,352	1,599	1,975	2,058	2039	4.0%	3.6%	4.4%	4.5%	4.8%
60-69	825	564	659	744	745	2.4%	1.3%	1.5%	1.6%	1.8%
70+	1,316	1,036	1,260	1,203	1064	3.9%	2.3%	2.8%	2.6%	2.5%
Total	34,066	44,364	44,996	46,088	42275	100.0%	100.0%	100.0%	100.0%	100.0%
<i>Hours not reported</i>	10,708	1,464	1,178	1,213	885					
<i>Note: Higher non response in 1997</i>										

7

ENROLLED NURSE WORKFORCE TREND TABLES

Table 7.1 Age and sex distribution, enrolled nurses working in NSW, 1997 – 2001

Age group	1997	1998	1999	2000	2001	1997	1998	1999	2000	2001
Female — Survey Respondents										
	No.	No.	No.	No.	No.	%	%	%	%	%
Under 25	542	438	366	300	241	7.5%	5.9%	4.8%	3.9%	3.3%
25-29	912	895	829	771	638	12.6%	12.0%	10.9%	10.0%	8.7%
30-34	1193	1103	1079	998	833	16.4%	14.8%	14.2%	12.9%	11.4%
35-39	1724	1645	1511	1436	1258	23.7%	22.1%	19.9%	18.6%	17.2%
40-44	1348	1630	1800	1922	1795	18.6%	21.9%	23.7%	24.9%	24.6%
45-49	764	835	971	1127	1267	10.5%	11.2%	12.8%	14.6%	17.3%
50-54	425	497	581	665	736	5.8%	6.7%	7.6%	8.6%	10.1%
55-59	256	288	307	329	356	3.5%	3.9%	4.0%	4.3%	4.9%
60-64	84	93	126	129	138	1.2%	1.2%	1.7%	1.7%	1.9%
65-69	13	17	23	28	34	0.2%	0.2%	0.3%	0.4%	0.5%
70-74	4	4	5	9	4	0.1%	0.1%	0.1%	0.1%	0.1%
Over 75	0	0	0	0	3	0.0%	0.0%	0.0%	0.0%	0.0%
Total	7265	7445	7598	7714	7303	100.0%	100.0%	100.0%	100.0%	100.0%
<i>Age unknown</i>	1,387	1,402	1,395	1,342	1198					
Male — Survey Respondents										
	No.	No.	No.	No.	No.	%	%	%	%	%
Under 25	68	52	43	46	36	11.3%	8.3%	6.8%	7.1%	6.0%
25-29	103	106	113	107	85	17.1%	17.0%	17.9%	16.4%	14.3%
30-34	112	123	111	105	91	18.6%	19.7%	17.6%	16.1%	15.3%
35-39	124	116	114	119	98	20.6%	18.6%	18.1%	18.3%	16.4%
40-44	99	112	110	103	103	16.5%	18.0%	17.5%	15.8%	17.3%
45-49	39	50	60	83	91	6.5%	8.0%	9.5%	12.7%	15.3%
50-54	34	40	42	44	46	5.7%	6.4%	6.7%	6.8%	7.7%
55-59	14	16	24	30	33	2.3%	2.6%	3.8%	4.6%	5.5%
60-64	8	8	13	13	12	1.3%	1.3%	2.1%	2.0%	2.0%
65-69	0	0	0	1	1	0.0%	0.0%	0.0%	0.2%	0.2%
70-74	0	0	0	0	0	0.0%	0.0%	0.0%	0.0%	0.0%
Over 75	0	0	0	0	0	0.0%	0.0%	0.0%	0.0%	0.0%
Total	601	623	630	651	596	100.0%	100.0%	100.0%	100%	100.0%
<i>Age unknown</i>	20	24	23	27	24					

Table 7.1 cont'd Age and sex distribution, enrolled nurses working in NSW, 1997 – 2001

Age group	1997	1998	1999	2000	2001	1997	1998	1999	2000	2001
Total — Survey Respondents										
	No.	No.	No.	No.	No.	%	%	%	%	%
Under 25	610	490	409	346	277	7.8%	6.1%	5.0%	4.1%	3.8%
25-29	1015	1001	942	878	723	12.9%	12.4%	11.4%	10.5%	9.9%
30-34	1305	1226	1190	1103	924	16.6%	15.2%	14.5%	13.2%	12.7%
35-39	1848	1761	1625	1555	1356	23.5%	21.8%	19.7%	18.6%	18.6%
40-44	1447	1742	1910	2025	1898	18.4%	21.6%	23.2%	24.2%	26.0%
45-49	803	885	1031	1210	1358	10.2%	11.0%	12.5%	14.5%	18.6%
50-54	459	537	623	709	782	5.8%	6.7%	7.6%	8.5%	10.7%
55-59	270	304	331	359	389	3.4%	3.8%	4.0%	4.3%	5.3%
60-64	92	101	139	142	150	1.2%	1.3%	1.7%	1.7%	2.1%
65-69	13	17	23	29	35	0.2%	0.2%	0.3%	0.3%	0.5%
70-74	4	4	5	9	4	0.1%	0.0%	0.1%	0.1%	0.1%
Over 75	0	0	0	0	3	0.0%	0.0%	0.0%	0.0%	0.0%
Total	7866	8068	8228	8365	8183	100.0%	100.0%	100.0%	100.0%	100.0%
<i>Age unknown</i>	<i>1,407</i>	<i>1,426</i>	<i>1,418</i>	<i>1,369</i>	<i>1222</i>					

Fig. 7.1 Age and sex distribution, enrolled nurses working in NSW, 1997 – 2001

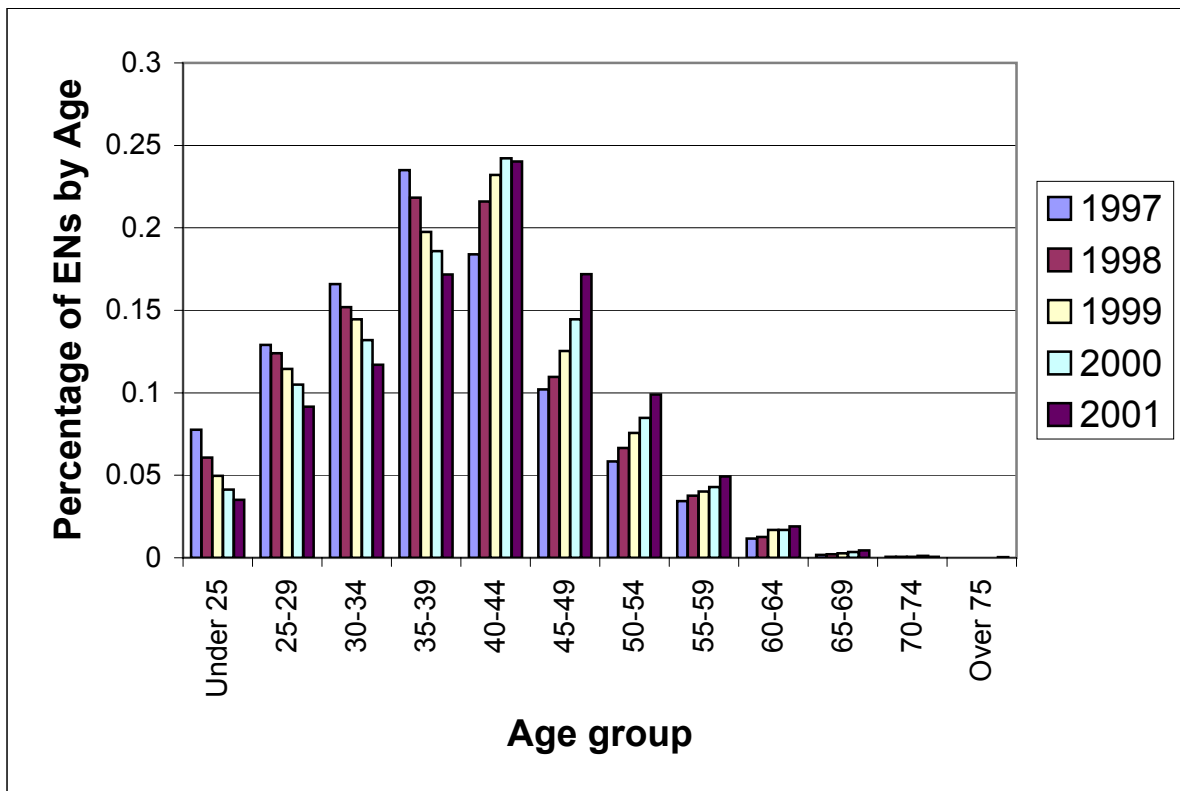


Table 7.2a Usual place of work for female enrolled nurses working in NSW - main job, 1997 - 2001

Place of work in main job	1997	1998	1999	2000	2001	1997	1998	1999	2000	2001
	Female — Survey Respondents					%	%	%	%	%
	No.	No.	No.	No.	No.	%	%	%	%	%
Public sector										
Public hospital	3,797	4,090	4,172	4094	3915	47.2%	48.0%	48.0%	46.9%	48.8%
Public day procedure centre	72	53	55	57	39	0.9%	0.6%	0.6%	0.7%	0.5%
Public nursing home or hostel	1,150	1,270	1,338	1269	1138	14.3%	14.9%	15.4%	14.5%	13.7%
Public hospice	60	46	46	35	36	0.7%	0.5%	0.5%	0.4%	0.4%
Public community health service	175	319	308	348	352	2.2%	3.7%	3.5%	4.0%	4.2%
Public multipurpose service	0	44	65	72	82	0.0%	0.5%	0.7%	0.8%	1.0%
Public developmental disability service	287	320	344	352	301	3.6%	3.8%	4.0%	4.0%	4.2%
Defence forces	18	14	23	33	34	0.2%	0.2%	0.3%	0.4%	0.5%
Public school	14	8	18	19	18	0.2%	0.1%	0.2%	0.2%	0.2%
Public tertiary education institution	8	10	8	9	15	0.1%	0.1%	0.1%	0.1%	0.2%
Public corrective services	7	9	15	10	13	0.1%	0.1%	0.2%	0.1%	0.2%
Public other	216	94	188	178	127	2.7%	1.1%	2.2%	2.0%	1.6%
Total public sector	5,804	6,277	6,580	6476	6070	72.2%	73.7%	75.7%	74.2%	75.6%
Private sector										
Private hospital	760	801	842	852	887	9.5%	9.4%	9.7%	9.8%	10.7%
Private day procedure centre	62	56	56	78	62	0.8%	0.7%	0.6%	0.9%	0.8%
Private nursing home or hostel	940	890	768	839	711	11.7%	10.4%	8.8%	9.6%	8.5%
Private hospice	3	0	3	0	1	0.0%	0.0%	0.0%	0.0%	0.0%
Private medical practice	132	147	169	197	177	1.6%	1.7%	1.9%	2.3%	2.0%
Private community health service	7	36	28	44	43	0.1%	0.4%	0.3%	0.5%	0.6%
Private multipurpose service	0	8	6	11	7	0.0%	0.1%	0.1%	0.1%	0.1%
Private developmental disability service	12	13	10	14	10	0.1%	0.2%	0.1%	0.2%	0.1%
Private practice	202	79	87	115	60	2.5%	0.9%	1.0%	1.3%	0.7%
Private school	9	8	4	4	1	0.1%	0.1%	0.0%	0.0%	0.0%
Private tertiary education institution	4	1	1	0	0	0.0%	0.0%	0.0%	0.0%	0.0%
Private mining, industrial or commercial sector	29	86	11	3	7	0.4%	1.0%	0.1%	0.0%	0.1%
Private corrective services	0	0	1	2	1	0.0%	0.0%	0.0%	0.0%	0.0%
Private other	72	117	131	94	71	0.9%	1.4%	1.5%	1.1%	0.9%
Total private sector	2,232	2,242	2,117	2253	2038	27.8%	26.3%	24.3%	25.8%	24.4%
Total	8,036	8,519	8,697	8729	8108	100.0%	100.0%	100.0%	100.0%	100.0%
Non-response:	616	328	296	327	393					4.6%

Table 7.2b Usual place of work for male enrolled nurses working in NSW - main job, 1997 - 2001

Place of work in main job	1997	1998	1999	2000	2001	1997	1998	1999	2000	2001
	Male — Survey Respondents					%	%	%	%	%
	No.	No.	No.	No.	No.					
Public sector										
Public hospital	309	324	356	375	340	53.0%	52.3%	56.7%	57.4%	57.0%
Public day procedure centre	4	3	4	5	3	0.7%	0.5%	0.6%	80.0%	0.5%
Public nursing home or hostel	60	72	62	61	50	10.3%	11.6%	9.9%	9.3%	8.4%
Public hospice	11	6	5	4	3	1.9%	1.0%	0.8%	0.6%	0.5%
Public community health service	3	23	20	17	16	0.5%	3.7%	3.2%	2.6%	2.7%
Public multipurpose service	0	4	4	6	6	0.0%	0.6%	0.6%	0.9%	1.0%
Public developmental disability service	41	50	57	58	58	7.0%	8.1%	9.1%	8.9%	9.7%
Defence forces	22	22	18	16	13	3.8%	3.6%	2.9%	2.5%	2.2%
Public school	0	0	1	1	1	0.0%	0.0%	0.2%	0.2%	0.2%
Public tertiary education institution	1	0	0	3	0	0.2%	0.0%	0.0%	0.5%	0.0%
Public corrective services	0	1	2	2	1	0.0%	0.2%	0.3%	0.3%	0.2%
Public other	11	7	12	14	18	1.9%	1.1%	1.9%	2.1%	3.0%
Total public sector	462	512	541	562	509	79.2%	82.7%	86.1%	86.1%	85.3%
Private sector										
Private hospital	49	50	47	40	45	8.4%	8.1%	7.5%	6.1%	7.5%
Private day procedure centre	1	1	3	3	5	0.2%	0.2%	0.5%	0.5%	0.8%
Private nursing home or hostel	42	41	20	26	25	7.2%	6.6%	3.2%	4.0%	4.2%
Private hospice	0	0	0	1	0	0.0%	0.0%	0.0%	0.2%	0.0%
Private medical practice	3	3	1	4	0	0.5%	0.5%	0.2%	0.6%	0.0%
Private community health service	0	1	1	1	5	0.0%	0.2%	0.2%	0.2%	0.8%
Private multipurpose service	0	0	1	0	2	0.0%	0.0%	0.2%	0.0%	0.3%
Private developmental disability service	0	2	4	1	0	0.0%	0.3%	0.6%	0.2%	0.0%
Private practice	22	4	3	7	0	3.8%	0.6%	0.5%	1.1%	0.0%
Private school	0	1	0	0	0	0.0%	0.2%	0.0%	0.0%	0.0%
Private tertiary education institution	0	0	0	0	0	0.0%	0.0%	0.0%	0.0%	0.0%
Private mining, industrial or commercial sector	1	1	2	4	0	0.2%	0.2%	0.3%	0.6%	0.0%
Private corrective services	0	0	0	0	0	0.0%	0.0%	0.0%	0.0%	0.0%
Private other	3	3	5	4	6	0.5%	0.5%	0.8%	0.6%	1.0%
Total private sector	121	107	87	91	88	20.8%	17.3%	13.9%	13.9%	14.7%
Total	583	619	628	653	597	100.0%	100.0%	100.0%	100.0%	100.0%
<i>Non-response:</i>	38	28	25	25	23					

Table 7.2c Usual place of work for enrolled nurses working in NSW - main job, 1997 - 2001

Place of work in main job	1997	1998	1999	2000	2001	1997	1998	1999	2000	2001
	Total — Survey Respondents									
	No.	No.	No.	No.	No.	%	%	%	%	%
Public sector										
Public hospital	4106	4414	4528	4469	4382	47.6%	48.3%	48.6%	47.6%	48.8%
Public day procedure centre	76	56	59	62	43	0.9%	0.6%	0.6%	0.7%	0.5%
Public nursing home or hostel	1210	1342	1400	1330	1227	14.0%	14.7%	15.0%	14.2%	13.7%
Public hospice	71	52	51	39	40	0.8%	0.6%	0.5%	0.4%	0.4%
Public community health service	178	342	328	365	375	2.1%	3.7%	3.5%	3.9%	4.2%
Public multipurpose service	0	48	69	78	89	0.0%	0.5%	0.7%	0.8%	1.0%
Public developmental disability service	328	370	401	410	381	3.8%	4.0%	4.3%	4.4%	4.2%
Defence forces	40	36	41	49	49	0.5%	0.4%	0.4%	0.5%	0.5%
Public school	14	8	19	20	19	0.2%	0.1%	0.2%	0.2%	0.2%
Public tertiary education institution	9	10	8	12	16	0.1%	0.1%	0.1%	0.1%	0.2%
Public corrective services	7	10	17	12	14	0.1%	0.1%	0.2%	0.1%	0.2%
Public other	227	101	200	192	147	2.6%	1.1%	2.1%	2.0%	1.6%
Total public sector	6266	6789	7121	7038	6782	72.7%	74.3%	76.4%	75.0%	75.6%
Private sector										
Private hospital	809	851	889	892	956	9.4%	9.3%	9.5%	9.5%	10.7%
Private day procedure centre	63	57	59	81	68	0.7%	0.6%	0.6%	0.9%	0.8%
Private nursing home or hostel	982	931	788	865	762	11.4%	10.2%	8.5%	9.2%	8.5%
Private hospice	3	0	3	1	1	0.0%	0.0%	0.0%	0.0%	0.0%
Private medical practice	135	150	170	201	182	1.6%	1.6%	1.8%	2.1%	2.0%
Private community health service	7	37	29	45	52	0.1%	0.4%	0.3%	0.5%	0.6%
Private multipurpose service	0	8	7	11	9	0.0%	0.1%	0.1%	0.1%	0.1%
Private developmental disability service	12	15	14	15	10	0.1%	0.2%	0.2%	0.2%	0.1%
Private practice	224	83	90	122	64	2.6%	0.9%	1.0%	1.3%	0.7%
Private school	9	9	4	4	1	0.1%	0.1%	0.0%	0.0%	0.0%
Private tertiary education institution	4	1	1	0	0	0.0%	0.0%	0.0%	0.0%	0.0%
Private mining, industrial or commercial sector	30	87	13	7	8	0.3%	1.0%	0.1%	0.1%	0.1%
Private corrective services	0	0	1	2	1	0.0%	0.0%	0.0%	0.0%	0.0%
Private other	75	120	136	98	80	0.9%	1.3%	1.5%	1.0%	0.9%
Total private sector	2353	2349	2204	2344	2194	27.3%	25.7%	23.6%	25.0%	24.4%
Total	8619	9138	9325	9382	8976	100.0%	100.0%	100.0%	100.0%	100.0%
<i>Non-response:</i>	654	356	321	352	429					

Trends in the Enrolled Nurse Workforce 1997 - 2001
Table 7.3a: Work location of female enrolled nurses working in NSW, by Area Health Service - main job, 1997-2001

Place of work in main job	1997	1998	1999	2000	2001	1997	1998	1999	2000	2001
	Female — Survey Respondents									
	No.	No.	No.	No.	No.	%	%	%	%	%
Health Service										
Central Coast	289	349	360	369	361	4.4%	4.3%	4.3%	4.4%	4.5%
Central Sydney	245	326	322	326	291	3.7%	4.0%	3.9%	3.9%	3.7%
Hunter	796	997	1011	1050	987	12.0%	12.3%	12.2%	12.5%	12.4%
Illawarra	483	574	575	595	587	7.3%	7.1%	6.9%	7.1%	7.4%
Northern Sydney	467	580	560	579	548	7.1%	7.1%	6.8%	6.9%	6.9%
South Eastern Sydney	447	562	568	571	563	6.8%	6.9%	6.9%	6.8%	7.1%
South Western Sydney	369	468	500	501	452	5.6%	5.8%	6.0%	6.0%	5.7%
Wentworth	265	326	318	299	300	4.0%	4.0%	3.8%	3.6%	3.8%
Western Sydney	366	541	572	557	546	5.5%	6.7%	6.9%	6.6%	6.9%
Total Metropolitan Areas	3727	4723	4786	4847	4635	56.3%	58.2%	57.8%	57.7%	58.3%
Far West	117	119	119	125	106	1.8%	1.5%	1.4%	1.5%	1.3%
Greater Murray	597	676	694	752	679	9.0%	8.3%	8.4%	8.9%	8.5%
Macquarie	224	260	270	272	257	3.4%	3.2%	3.3%	3.2%	3.2%
Mid North Coast	314	390	513	526	491	4.7%	4.8%	4.9%	6.3%	6.2%
Mid Western	429	516	517	529	483	6.5%	6.4%	6.2%	6.3%	6.1%
New England	401	456	482	463	438	6.1%	5.6%	5.8%	5.5%	5.5%
Northern Rivers	426	528	416	400	413	6.4%	6.5%	6.4%	4.8%	5.2%
Southern	366	438	464	456	421	5.5%	5.4%	5.6%	5.4%	5.3%
Total Rural Health Services	2874	3383	3475	3523	3288	43.4%	41.7%	42.0%	41.9%	41.4%
Interstate	15	16	19	34	24	0.2%	0.2%	0.2%	0.4%	0.3%
Total	6616	8122	8280	8404	7947	100.0%	100.0%	100.0%	100.0%	100.0%
Non response:	2036	725	713	652	554					

Note: postcode text fields for 1998, 1999 coded, so response increases for those 2 years

Table 7.3b: Work location of male enrolled nurses working in NSW, by Area Health Service - main job, 1997-2001

Place of work in main job	1997	1998	1999	2000	2001	1997	1998	1999	2000	2001
	Male — Survey Respondents									
	No.	No.	No.	No.	No.	%	%	%	%	%
Health Service										
Central Coast	20	29	21	26	32	4.4%	5.0%	3.6%	4.2%	7.5%
Central Sydney	42	60	48	58	51	9.2%	10.4%	8.1%	9.4%	11.9%
Hunter	73	88	74	74	74	15.9%	15.2%	12.6%	12.0%	17.3%
Illawarra	29	35	40	46	38	6.3%	6.0%	6.8%	7.4%	8.9%
Northern Sydney	29	47	56	56	43	6.3%	8.1%	9.5%	9.0%	10.0%
South Eastern Sydney	54	68	69	85	62	11.8%	11.7%	11.7%	13.7%	14.5%
South Western Sydney	29	35	35	37	35	6.3%	6.0%	5.9%	6.0%	8.2%
Wentworth	18	19	17	16	15	3.9%	3.3%	2.9%	2.6%	3.5%
Western Sydney	37	50	70	64	66	8.1%	8.6%	11.9%	10.3%	15.4%
Total Metropolitan Areas	331	431	430	462	416	72.1%	74.4%	73.0%	74.6%	97.2%
Far West	5	3	7	6	5	1.1%	0.5%	1.2%	1.0%	1.2%
Greater Murray	20	23	19	18	18	4.4%	4.0%	3.2%	2.9%	4.2%
Macquarie	8	9	9	8	8	1.7%	1.6%	1.5%	1.3%	1.9%
Mid North Coast	18	23	29	32	33	3.9%	4.0%	4.2%	5.2%	7.7%
Mid Western	20	26	27	29	29	4.4%	4.5%	4.6%	4.7%	6.8%
New England	12	14	19	17	11	2.6%	2.4%	3.2%	2.7%	2.6%
Northern Rivers	20	24	25	21	20	4.4%	4.1%	4.9%	3.4%	4.7%
Southern	23	24	23	26	20	5.0%	4.1%	3.9%	4.2%	4.7%
Total Rural Health Services	126	146	158	157	144	27.5%	25.2%	26.8%	25.4%	33.6%
Interstate	2	2	1	0	1	0.4%	0.3%	0.2%	0.0%	0.2%
Total	459	579	589	619	561	100.0%	100.0%	100.0%	100.0%	100.0%
<i>Non response:</i>	162	68	64	59	59					

Note: postcode text fields for 1998, 1999 coded, so response increases for those 2 years

Trends in the Enrolled Nurse Workforce 1997 - 2001
Table 7.3c: Work location of enrolled nurses working in NSW, by Area Health Service - main job, 1997-2001

Place of work in main job	1997	1998	1999	2000	2001	1997	1998	1999	2000	2001
Total — Survey Respondents										
	No.	No.	No.	No.	No.	%	%	%	%	%
Health Service										
Central Coast	309	378	381	395	404	4.4%	4.3%	4.3%	4.4%	4.6%
Central Sydney	287	386	370	384	355	4.1%	4.4%	4.2%	4.3%	4.0%
Hunter	869	1085	1085	1124	1098	12.3%	12.5%	12.2%	12.5%	12.5%
Illawarra	512	609	615	641	644	7.2%	7.0%	6.9%	7.1%	7.3%
Northern Sydney	496	627	616	635	613	7.0%	7.2%	6.9%	7.0%	7.0%
South Eastern Sydney	501	630	637	656	636	7.1%	7.2%	7.2%	7.3%	7.2%
South Western Sydney	398	503	535	538	501	5.6%	5.8%	6.0%	6.0%	5.7%
Wentworth	283	345	335	315	322	4.0%	4.0%	3.8%	3.5%	3.7%
Western Sydney	403	591	642	621	628	5.7%	6.8%	7.2%	6.9%	7.2%
Total Metropolitan Areas	4058	5154	5216	5309	5201	57.4%	59.2%	58.8%	58.8%	59.3%
Far West	122	122	126	131	115	1.7%	1.4%	1.4%	1.5%	1.3%
Greater Murray	617	699	713	770	722	8.7%	8.0%	8.0%	8.5%	8.2%
Macquarie	232	269	279	280	276	3.3%	3.1%	3.1%	3.1%	3.1%
Mid North Coast	332	413	542	558	540	4.7%	4.7%	4.8%	6.2%	6.2%
Mid Western	449	542	544	558	531	6.3%	6.2%	6.1%	6.2%	6.0%
New England	413	470	501	480	459	5.8%	5.4%	5.6%	5.3%	5.2%
Northern Rivers	446	552	441	421	441	6.3%	6.3%	6.3%	4.7%	5.0%
Southern	389	462	487	482	464	5.5%	5.3%	5.5%	5.3%	5.3%
Total Rural Health Services	3000	3529	3633	3680	3548	42.4%	40.6%	41.0%	40.8%	40.4%
Interstate	17	18	20	34	28	0.2%	0.2%	0.2%	0.4%	0.3%
Total	7075	8701	8869	9023	8777	100.0%	100.0%	100.0%	100.0%	100.0%
<i>Non response:</i>	2198	793	777	711	628					

Note: postcode text fields from 1998 onwards coded, so response increases for those years

Table 7.4: Total hours per week, enrolled nurses working in NSW, 1997 – 2001

Hours per week	1997	1998	1999	2000	2001	1997	1998	1999	2000	2001
Female — Survey Respondents										
	No.	No.	No.	No.	No.	%	%	%	%	%
1-9	172	303	248	287	237	2.3%	3.7%	2.9%	3.3%	2.9%
10-19	585	926	930	920	871	7.7%	11.2%	10.9%	1.1%	10.7%
20-29	1178	1907	2060	1993	1907	15.5%	23.1%	24.1%	23.3%	23.4%
30-34	782	963	1045	1152	1133	10.3%	11.6%	12.2%	13.4%	13.9%
35-39	1260	1515	1498	1484	1414	16.6%	18.3%	17.6%	17.3%	17.3%
40-44	1798	2118	2109	1988	1887	23.7%	25.6%	24.7%	23.2%	23.1%
45-49	228	134	167	208	186	3.0%	1.6%	2.0%	2.4%	2.3%
50-59	219	131	153	160	178	2.9%	1.6%	1.8%	1.9%	2.2%
60-69	277	62	66	102	92	3.7%	0.7%	0.8%	1.2%	1.1%
70+	1089	214	257	278	262	14.4%	2.6%	3.0%	3.2%	3.2%
Total	7588	8273	8533	8572	8167	100.0%	100.0%	100.0%	100.0%	100.0%
<i>Hours not reported</i>	1064	574	460	484	334					

Note: Higher non response in 1997

Male — Survey Respondents										
	No.	No.	No.	No.	No.	%	%	%	%	%
1-9	13	18	14	12	15	2.4%	3.0%	2.3%	1.9%	2.5%
10-19	25	42	39	28	22	4.7%	6.9%	6.3%	4.3%	3.7%
20-29	40	63	57	60	57	7.5%	10.4%	9.2%	9.3%	9.5%
30-34	43	50	55	56	57	8.1%	8.3%	8.9%	8.6%	9.5%
35-39	122	180	150	172	142	22.8%	29.8%	24.2%	26.5%	23.7%
40-44	142	176	223	226	220	26.6%	29.1%	35.9%	34.9%	36.7%
45-49	21	19	27	23	21	3.9%	3.1%	4.3%	3.5%	3.5%
50-59	18	27	21	28	25	3.4%	4.5%	3.4%	4.3%	4.2%
60-69	19	5	11	13	9	3.6%	0.8%	1.8%	0.2%	1.5%
70+	91	25	24	30	31	17.0%	4.1%	3.9%	4.6%	5.2%
Total	534	605	621	648	599	100.0%	100.0%	100.0%	100.0%	100.0%
<i>Hours not reported</i>	87	42	32	30	21					

Note: Higher non response in 1997

Total — Survey Respondents										
	No.	No.	No.	No.	No.	%	%	%	%	%
1-9	185	321	262	299	252	2.3%	3.6%	2.9%	3.2%	2.9%
10-19	610	968	969	948	893	7.5%	10.9%	10.6%	10.3%	10.2%
20-29	1218	1970	2117	2053	1964	15.0%	22.2%	23.1%	22.3%	22.4%
30-34	825	1013	1100	1208	1190	10.2%	11.4%	12.0%	13.1%	13.6%
35-39	1382	1695	1648	1656	1556	17.0%	19.1%	18.0%	18.0%	17.8%
40-44	1940	2294	2332	2214	2107	23.9%	25.8%	25.5%	24.0%	24.0%
45-49	249	153	194	231	207	3.1%	1.7%	2.1%	2.5%	2.4%
50-59	237	158	174	188	203	2.9%	1.8%	1.9%	2.0%	2.3%
60-69	296	67	77	115	101	3.6%	0.8%	0.8%	1.2%	1.2%
70+	1180	239	281	308	294	14.5%	2.7%	3.1%	3.3%	3.4%
Total	8122	8878	9154	9220	8766	100.0%	100.0%	100.0%	100.0%	100.0%
<i>Hours not reported</i>	1151	616	492	514	355					

Note: Higher non response in 1997

APPENDIX A

Table A.1: Paid hours usually worked per week by nurses - main job

Hours per week	No.	%	No.	%	No.	%	No.	%	
	Sex unknown		Female		Male		Total		Per cent female
1-9	49	3.1%	1542	3.4%	56	1.5%	1647	3.2%	96.5%
10-19	162	10.3%	5603	12.4%	117	3.0%	5882	11.6%	98.0%
20-29	367	23.4%	10759	23.7%	318	8.3%	11444	22.6%	97.1%
30-37	249	15.8%	7073	15.6%	411	10.7%	7733	15.2%	94.5%
38-44	673	42.8%	18690	41.2%	2726	70.9%	22089	43.5%	87.3%
45-49	16	1.0%	339	0.7%	47	1.2%	402	0.8%	87.8%
50-59	14	0.9%	303	0.7%	40	1.0%	357	0.7%	88.3%
60-69	10	0.6%	212	0.5%	35	0.9%	257	0.5%	85.8%
>70	31	2.0%	812	1.8%	94	2.4%	937	1.8%	89.6%
Total	1571	100.0%	45333	100.0%	3844	100.0%	50748	100.0%	92.2%
<i>No hours reported</i>	41	2.5%	1637	3.5%	139	3.5%	1817	3.5%	

Note: refer to Table 3.10

Table A.2: Paid hours usually worked per week by nurses - second job

Hours per week	No.	%	No.	%	No.	%	No.	%	
	Sex unknown		Female		Male		Total		Per cent female
1-9	77	51.0%	2492	54.2%	223	53.6%	2792	54.1%	91.8%
10-19	43	28.5%	1529	33.3%	124	29.8%	1696	32.8%	92.5%
20-29	20	13.2%	390	8.5%	51	12.3%	461	8.9%	88.4%
30-37	7	4.6%	83	1.8%	12	2.9%	102	2.0%	87.4%
38-44	4	2.6%	73	1.6%	3	0.7%	80	1.5%	96.1%
45-49	0	0.0%	14	0.3%	1	0.2%	15	0.3%	93.3%
50-59	0	0.0%	2	0.0%	1	0.2%	3	0.1%	66.7%
60-69	0	0.0%	3	0.1%	0	0.0%	3	0.1%	100.0%
>70	0	0.0%	10	0.2%	1	0.2%	11	0.2%	90.9%
Total	151	100.0%	4596	100.0%	416	100.0%	5163	100.0%	91.7%
<i>No hours reported</i>	1461	90.6%	42374	90.2%	3567	89.6%	47402	90.2%	

Note: refer to Table 3.11

Table A.3: Total hours usually worked per week by nurses - main job

Hours per week	No.	%	No.	%	No.	%	No.	%	
	Sex unknown		Female		Male		Total		Per cent female
1-9	48	3.0%	1487	3.3%	52	1.3%	1587	3.1%	96.6%
10-19	161	10.2%	5499	12.0%	115	3.0%	5775	11.3%	98.0%
20-29	354	22.5%	10558	23.1%	305	7.9%	11217	22.0%	97.2%
30-37	240	15.2%	6938	15.2%	370	9.6%	7548	14.8%	94.9%
38-44	607	38.5%	16968	37.2%	2502	64.7%	20077	39.3%	87.1%
45-49	61	3.9%	1460	3.2%	177	4.6%	1698	3.3%	89.2%
50-59	53	3.4%	1290	2.8%	171	4.4%	1514	3.0%	88.3%
60-69	19	1.2%	516	1.1%	72	1.9%	607	1.2%	87.8%
>70	32	2.0%	922	2.0%	104	2.7%	1058	2.1%	89.9%
Total	1575	100.0%	45638	100.0%	3868	100.0%	51081	100.0%	92.2%
<i>No hours reported</i>	37	2.3%	1332	2.8%	115	2.9%	1484	2.8%	

Note: refer to Table 3.12

Survey data have not been adjusted for unknown information (see p. 2)

Table A.4: Total hours usually worked per week by nurses - second job

Hours per week	No.	%	No.	%	No.	%	No.	%	
	Sex unknown		Female		Male		Total		Per cent female
1-9	78	49.1%	2498	52.9%	227	52.8%	2803	52.7%	91.7%
10-19	44	27.7%	1584	33.5%	128	29.8%	1756	33.0%	92.5%
20-29	21	13.2%	430	9.1%	51	11.9%	502	9.4%	89.4%
30-37	7	4.4%	97	2.1%	17	4.0%	121	2.3%	85.1%
38-44	9	5.7%	80	1.7%	4	0.9%	93	1.7%	95.2%
45-49	0	0.0%	15	0.3%	1	0.2%	16	0.3%	93.8%
50-59	0	0.0%	5	0.1%	1	0.2%	6	0.1%	83.3%
60-69	0	0.0%	3	0.1%	0	0.0%	3	0.1%	100.0%
>70	0	0.0%	14	0.3%	1	0.2%	15	0.3%	93.3%
Total	159	100.0%	4726	100.0%	430	100.0%	5315	100.0%	91.7%
<i>No hours reported</i>	1453	90.1%	42244	89.9%	3553	89.2%	47250	89.9%	

Note: refer to Table 3.13

Table A.5: Total hours usually worked per week by nurses - all jobs

Hours per week	No.	%	No.	%	No.	%	No.	%	
	Sex unknown		Female		Male		Total		Per cent female
1-9	41	2.6%	1379	3.0%	53	1.4%	1473	2.9%	96.3%
10-19	138	8.7%	4885	10.7%	103	2.6%	5126	10.0%	97.9%
20-29	338	21.4%	9901	21.6%	261	6.7%	10500	20.5%	97.4%
30-37	253	16.0%	7138	15.6%	359	9.2%	7750	15.1%	95.2%
38-44	583	36.9%	16582	36.2%	2315	59.5%	19480	38.0%	87.7%
45-49	77	4.9%	2148	4.7%	292	7.5%	2517	4.9%	88.0%
50-59	72	4.6%	1909	4.2%	272	7.0%	2253	4.4%	87.5%
60-69	34	2.2%	717	1.6%	101	2.6%	852	1.7%	87.7%
>70	42	2.7%	1185	2.6%	138	3.5%	1365	2.7%	89.6%
Total	1578	100.0%	45844	100.0%	3894	100.0%	51316	100.0%	92.2%
<i>No hours reported</i>	34	2.1%	1126	2.4%	89	2.2%	1249	2.4%	

Note: refer to Table 3.14

Table A.6: Estimated full-time equivalent nurses in workforce using average hours worked per week in total, both jobs (based on 38 hours per week defined as 1 FTE)

Hours per week	No.	%	No.	%	No.	%	No.	%	
	Sex unknown		Female		Male		Total		Per cent female
1-9	7.8	0.5%	248.4	0.6%	9.9474	0.2%	266.1	0.6%	96.1%
10-19	55.4	3.9%	1958.2	4.8%	40.132	1.0%	2053.7	4.4%	98.0%
20-29	209.3	14.6%	6110.3	15.0%	161.97	3.9%	6481.6	14.0%	97.4%
30-37	215.7	15.1%	6108.0	15.0%	308.95	7.5%	6632.7	14.3%	95.2%
38-44	607.1	42.4%	17260.7	42.4%	2400.6	58.3%	20268.3	43.8%	87.8%
45-49	93.7	6.5%	2624.1	6.5%	356.61	8.7%	3074.3	6.7%	88.0%
50-59	98.9	6.9%	2615.1	6.4%	372.29	9.0%	3086.2	6.7%	87.5%
60-69	55.2	3.9%	1166.6	2.9%	163.82	4.0%	1385.6	3.0%	87.7%
>70	88.8	6.2%	2588.0	6.4%	301.61	7.3%	2978.4	6.4%	89.6%
Total	1431.9	100.0%	40679.2	100.0%	4115.9	100.0%	46227.1	100.0%	90.8%
<i>No. working hours</i>	1578		45844		3894		51316		

Note: Table A.6 calculates the full-time equivalent (FTE) workforce assuming that 1 FTE works a 38 hour week. The total hours worked per week by the nurse numbers in Table A.5 are divided by 38 to calculate FTE.

Note: Refer to Table 3.15 as this calculates FTE based on 35 hours per week

Table A.7: Nurse headcount and FTE by principal area of nursing practice and sector employed-main job (FTE calculated on 38 hours per week)

Hours per week	No.	%	No.	%	No.	%	
	Private		Public		Total		Per cent public
Nurse Headcount							
Emergency Department	65	0.5%	1728	4.7%	1793	3.7%	96.4%
Intensive care	343	2.9%	2368	6.5%	2711	5.6%	87.3%
Mental health	184	1.5%	1829	5.0%	2013	4.1%	90.9%
Midwifery	653	5.4%	2570	7.0%	3223	6.6%	79.7%
Operating Theatre	1407	11.7%	2386	6.5%	3793	7.8%	62.9%
Other	9375	77.9%	25829	70.4%	35204	72.2%	73.4%
Total	12027	100.0%	36710	100.0%	48737	100.0%	75.3%
<i>Non response speciality</i>	578	4.6%	1636	4.3%	2214	4.3%	73.9%
<i>Non response setting</i>					1614		
Nurse headcount who responded to area of nursing practice, hours worked, sector							
Emergency Department	65	0.5%	1711	4.7%	1776	3.7%	96.3%
Intensive care	336	2.8%	2343	6.5%	2679	5.6%	87.5%
Mental health	180	1.5%	2609	7.2%	2789	5.8%	93.5%
Midwifery	648	5.5%	2532	7.0%	3180	6.6%	79.6%
Operating Theatre	1394	11.7%	2366	6.5%	3760	7.8%	62.9%
Other	9251	77.9%	24659	68.1%	33910	70.5%	72.7%
Total	11874	100.0%	36220	100.0%	48094	100.0%	75.3%
<i>Non response speciality</i>	546	4.4%	1529	4.1%	2075	4.1%	73.7%
<i>Non response setting</i>							
Nurse FTE					912		
Emergency Department	49.2	0.5%	1547.5	4.8%	1596.7	3.9%	96.9%
Intensive care	273.1	3.0%	2118.0	6.6%	2391.1	5.8%	88.6%
Mental health	155.1	1.7%	1746.8	5.4%	1901.9	4.6%	91.8%
Midwifery	438.2	4.7%	2066.5	6.4%	2504.6	6.1%	82.5%
Operating Theatre	1148.6	12.4%	2151.4	6.7%	3300.0	8.0%	65.2%
Other	7179.8	77.7%	22472.3	70.0%	29652.1	71.7%	75.8%
Total	9243.9	100.0%	32102.4	100.0%	41346.3	100.0%	77.6%

Note: FTE based on hours reported by the headcount of registered nurses who responded to area of nursing practice, hours worked, sector

Appendix A: Nurse Workforce 2001
Table A.8: Nurse headcount and FTE by principal area of nursing practice and sector employed-second job (FTE calculated on 38 hours per week)

Hours per week	No.	%	No.	%	No.	%	
	Private		Public		Total		Per cent public
Nurse Headcount							
Emergency Department	26	1.0%	117	4.9%	143	2.8%	81.8%
Intensive care	136	5.1%	163	6.8%	299	5.9%	54.5%
Mental health	61	2.3%	105	4.4%	166	3.3%	63.3%
Midwifery	171	6.4%	177	7.4%	348	6.8%	50.9%
Operating Theatre	256	9.5%	132	5.5%	388	7.6%	34.0%
Other	2041	75.8%	1705	71.1%	3746	73.6%	45.5%
Total	2691	100.0%	2399	100.0%	5090	100.0%	47.1%
<i>Non response, speciality</i>					508	1.0%	
<i>Non response second job</i>					46967	89.4%	
Nurse headcount who responded to area of nursing practice, hours worked, sector							
Emergency Department	23	0.9%	101	4.8%	124	2.7%	81.5%
Intensive care	112	4.5%	132	6.3%	244	5.3%	54.1%
Mental health	58	2.3%	91	4.3%	149	3.3%	61.1%
Midwifery	155	6.3%	155	7.4%	310	6.8%	50.0%
Operating Theatre	236	9.6%	113	5.4%	349	7.6%	32.4%
Other	1886	76.4%	1506	71.8%	3392	74.3%	44.4%
Total	2470	100.0%	2098	100.0%	4568	100.0%	45.9%
<i>Non response, speciality, hours</i>					348	0.7%	
<i>Non response, sector</i>					370	0.7%	
<i>Non response second job</i>					47279	89.9%	
Nurse FTE							
Emergency Department	4.6	0.6%	28.8	4.5%	33.4	2.4%	86.1%
Intensive care	30.8	4.2%	38.9	6.0%	69.7	5.1%	55.8%
Mental health	17.4	2.4%	29.7	4.6%	47.1	3.4%	63.1%
Midwifery	42.0	5.8%	39.8	6.2%	81.7	5.9%	48.6%
Operating Theatre	65.8	9.0%	35.6	5.5%	101.4	7.4%	35.1%
Other	569.1	78.0%	471.5	73.2%	1040.6	75.7%	45.3%
Total	729.8	100.0%	644.2	100.0%	1374.0	100.0%	46.9%

Note: FTE based on hours reported by the headcount of registered nurses who responded to area of nursing practice, hours worked, sector

Table A.9: Paid hours usually worked per week by registered nurses - main job

Hours per week	No.	%	No.	%	No.	%	No.	%	
	Sex unknown		Female		Male		Total		Per cent female
1-9	44	3.4%	1293	3.5%	40	1.2%	1377	3.3%	97.0%
10-19	133	10.3%	4645	12.5%	93	2.9%	4871	11.6%	98.0%
20-29	297	22.9%	8716	23.4%	255	7.8%	9268	22.2%	97.2%
30-37	197	15.2%	5586	15.0%	330	10.1%	6113	14.6%	94.4%
38-44	571	44.1%	15740	42.2%	2370	72.8%	18681	44.7%	86.9%
45-49	13	1.0%	277	0.7%	42	1.3%	332	0.8%	86.8%
50-59	10	0.8%	248	0.7%	30	0.9%	288	0.7%	89.2%
60-69	7	0.5%	158	0.4%	26	0.8%	191	0.5%	85.9%
>70	24	1.9%	613	1.6%	70	2.1%	707	1.7%	89.8%
Total	1296	100.0%	37276	100.0%	3256	100.0%	41828	100.0%	92.0%
<i>No hours reported</i>	32	2.4%	1193	3.1%	107	3.2%	1332	3.1%	

Note: refer to Table 4.21

Table A.10: Paid hours usually worked per week by registered nurses - second job

Hours per week	No.	%	No.	%	No.	%	No.	%	
	Sex unknown		Female		Male		Total		Per cent female
1-9	69	53.5%	2164	55.3%	195	54.3%	2428	55.2%	91.7%
10-19	35	27.1%	1281	32.7%	103	28.7%	1419	32.2%	92.6%
20-29	14	10.9%	314	8.0%	46	12.8%	374	8.5%	87.2%
30-37	7	5.4%	66	1.7%	10	2.8%	83	1.9%	86.8%
38-44	4	3.1%	64	1.6%	3	0.8%	71	1.6%	95.5%
45-49	0	0.0%	13	0.3%	1	0.3%	14	0.3%	92.9%
50-59	0	0.0%	2	0.1%	1	0.3%	3	0.1%	66.7%
60-69	0	0.0%	2	0.1%	0	0.0%	2	0.0%	100.0%
>70	0	0.0%	8	0.2%	0	0.0%	8	0.2%	100.0%
Total	129	100.0%	3914	100.0%	359	100.0%	4402	100.0%	91.6%
<i>No hours reported</i>	1199	90.3%	34555	89.8%	3004	89.3%	38758	89.8%	

Note: refer to Table 4.22

Table A. 11: Paid hours usually worked per week by registered nurses - both jobs

Hours per week	No.	%	No.	%	No.	%	No.	%	
	Sex unknown		Female		Male		Total		Per cent female
1-9	38	3.1%	1197	3.4%	42	1.3%	1277	3.2%	96.6%
10-19	114	9.3%	4147	11.7%	81	2.6%	4342	10.9%	98.1%
20-29	291	23.6%	8285	23.4%	221	7.1%	8797	22.1%	97.4%
30-37	189	15.4%	5458	15.4%	289	9.2%	5747	14.4%	95.0%
38-44	509	41.3%	14021	39.6%	2148	68.6%	16169	40.6%	86.7%
45-49	25	2.0%	798	2.3%	128	4.1%	951	2.4%	86.2%
50-59	19	1.5%	577	1.6%	97	3.1%	693	1.7%	85.6%
60-69	16	1.3%	253	0.7%	44	1.4%	313	0.8%	85.2%
>70	30	2.4%	707	2.0%	79	2.5%	816	2.1%	89.9%
Total	1231	100.0%	35443	100.0%	3129	100.0%	39803	100.0%	91.9%
<i>No hours reported</i>	30	2.4%	1071	2.9%	90	2.8%	1191	2.9%	

Note: refer to Table 4.23

Survey data have not been adjusted for unknown information (see p. 2)

Table A. 12: Total hours usually worked per week by registered nurses - main job

Hours per week	No.	%	No.	%	No.	%	No.	%	
	Sex unknown		Female		Male		Total		Per cent female
1-9	43	3.3%	1245	3.3%	37	1.1%	1325	3.1%	97.1%
10-19	133	10.2%	4545	12.1%	93	2.8%	4771	11.3%	98.0%
20-29	284	21.8%	8540	22.7%	241	7.3%	9065	21.4%	97.3%
30-37	189	14.5%	5458	14.5%	289	8.8%	5936	14.0%	95.0%
38-44	509	39.1%	14021	37.2%	2148	65.2%	16678	39.5%	86.7%
45-49	55	4.2%	1349	3.6%	168	5.1%	1572	3.7%	88.9%
50-59	47	3.6%	1202	3.2%	156	4.7%	1405	3.3%	88.5%
60-69	15	1.2%	453	1.2%	63	1.9%	531	1.3%	87.8%
>70	25	1.9%	704	1.9%	80	2.4%	809	1.9%	89.8%
Total	1300	99.8%	37517	99.6%	3275	99.4%	42092	99.6%	92.0%
No hours reported	28	2.1%	952	2.5%	88	2.6%	1068	2.5%	

Note: refer to Table 4.24

Table A. 13: Total hours usually worked per week by registered nurses - second job

Hours per week	No.	%	No.	%	No.	%	No.	%	
	Sex unknown		Female		Male		Total		Per cent female
1-9	70	5.4%	2170	5.8%	199	6.1%	2439	5.8%	91.6%
10-19	35	2.7%	1330	3.5%	105	3.2%	1470	3.5%	92.7%
20-29	15	1.2%	351	0.9%	46	1.4%	412	1.0%	88.4%
30-37	7	0.5%	78	0.2%	15	0.5%	100	0.2%	83.9%
38-44	9	0.7%	71	0.2%	4	0.1%	84	0.2%	94.7%
45-49	0	0.0%	14	0.0%	1	0.0%	15	0.0%	93.3%
50-59	0	0.0%	5	0.0%	1	0.0%	6	0.0%	83.3%
60-69	0	0.0%	2	0.0%	0	0.0%	2	0.0%	100.0%
>70	0	0.0%	11	0.0%	0	0.0%	11	0.0%	100.0%
Total	136	10.5%	4032	10.7%	371	11.3%	4539	10.8%	91.6%
No hours reported	1192	89.8%	34437	89.5%	2992	89.0%	38621	89.5%	

Note: refer to Table 4.25

Table A. 14: Total hours usually worked per week by registered nurses - all jobs

Hours per week	No.	%	No.	%	No.	%	No.	%	
	Sex unknown		Female		Male		Total		Per cent female
1-9	36	26.5%	1142	28.3%	38	10.2%	1216	26.8%	96.8%
10-19	113	83.1%	4014	99.6%	81	21.8%	4208	92.7%	98.0%
20-29	273	200.7%	7994	198.3%	204	55.0%	8471	186.6%	97.5%
30-37	202	148.5%	5641	139.9%	279	75.2%	6122	134.9%	95.3%
38-44	490	360.3%	13645	338.4%	1976	532.6%	16111	354.9%	87.4%
45-49	66	48.5%	1962	48.7%	271	73.0%	2299	50.6%	87.9%
50-59	61	44.9%	1731	42.9%	247	66.6%	2039	44.9%	87.5%
60-69	28	20.6%	625	15.5%	92	24.8%	745	16.4%	87.2%
>70	34	25.0%	923	22.9%	107	28.8%	1064	23.4%	89.6%
Total	1303	958.1%	37677	934.4%	3295	888.1%	42275	931.4%	92.0%
No hours reported	25	1.9%	792	2.1%	68	2.0%	885	2.1%	

Note: refer to Table 4.26

Table A.15: Estimated full-time equivalent registered nurses in workforce using average hours worked per week in total, all jobs (based on 38 hours per week defined as 1 FTE)

Hours per week	No.		%		No.		%		Per cent female
	Sex unknown	Female	Male	Total					
1-9	6.9	0.6%	203.5	0.6%	6.9	0.2%	217.3	0.6%	96.7%
10-19	45.9	3.9%	1610.7	4.8%	31.5	0.9%	1688.1	4.4%	98.1%
20-29	169.1	14.3%	4942.5	14.7%	127.2	3.6%	5238.7	13.7%	97.5%
30-37	172.3	14.5%	4829.7	14.4%	240.6	6.9%	5242.6	13.7%	95.3%
38-44	510.4	43.1%	14215.5	42.3%	2049.4	58.4%	16775.3	43.8%	87.4%
45-49	80.0	6.7%	2395.2	7.1%	330.7	9.4%	2805.9	7.3%	87.9%
50-59	83.8	7.1%	2366.4	7.0%	337.7	9.6%	2787.8	7.3%	87.5%
60-69	45.5	3.8%	1014.4	3.0%	149.1	4.2%	1209.1	3.2%	87.2%
>70	71.7	6.0%	2030.6	6.0%	236.3	6.7%	2338.5	6.1%	89.6%
Total	1185.5	100.0%	33608.4	100.0%	3509.3	100.0%	38303.3	100.0%	90.5%
<i>No. working hours</i>	1303		37677		3295		42275		

The total hours worked per week by the nurse numbers in Table A.14 are divided by 38 to calculate FTE.

Note: Refer to Table 4.10 in main report as this calculates FTE based on 35 hours per week

Table A.16: Registered nurse headcount and FTE by principal area of nursing practice and sector employed-main job (FTE calculated on 38 hours per week)

Hours per week	No.		%		No.		%		Per cent public
	Private	Public	Total						
Registered nurse headcount									
Emergency Department	64	0.6%	1654	5.4%	1718	4.3%	96.1%		
Intensive care	342	3.4%	2348	7.7%	2690	6.7%	87.1%		
Mental health	172	1.7%	1643	5.4%	1815	4.5%	87.3%		
Midwifery	642	6.4%	2521	8.3%	3163	7.8%	79.4%		
Operating Theatre	1123	11.3%	2026	6.7%	3149	7.8%	64.1%		
Other	7618	76.5%	20191	66.5%	27809	68.9%	71.0%		
Total	9961	100.0%	30383	100.0%	40344	100.0%	74.4%		
<i>Non response speciality</i>	450	4.3%	1181	3.7%	1631	3.9%	51.3%		
<i>Non response setting</i>					1185				
Registered nurse headcount who responded to area of nursing practice, hours worked, sector									
Emergency Department	64	0.7%	1638	5.5%	1702	4.3%	96.1%		
Intensive care	335	3.4%	2323	7.7%	2658	6.7%	87.3%		
Mental health	168	1.7%	2427	8.1%	2595	6.5%	87.6%		
Midwifery	637	6.5%	2485	8.3%	3122	7.8%	79.4%		
Operating Theatre	1113	11.3%	2011	6.7%	3124	7.8%	64.2%		
Other	7528	76.5%	19124	63.7%	26652	66.9%	71.0%		
Total	9845	100.0%	30008	100.0%	39853	100.0%	74.4%		
<i>Non response speciality</i>	424	4.1%	1118	3.6%	1542	3.7%			
<i>Non response setting</i>					697				
Registered nurse FTE									
Emergency Department	48.7	0.6%	1483.9	5.6%	1532.6	4.5%	96.6%		
Intensive care	272.4	3.6%	2099.8	7.9%	2372.2	6.9%	88.4%		
Mental health	144.2	1.9%	1571.1	5.9%	1715.3	5.0%	88.7%		
Midwifery	430.6	5.6%	2026.0	7.6%	2456.6	7.1%	82.2%		
Operating Theatre	911.1	11.9%	1823.7	6.8%	2734.8	8.0%	66.6%		
Other	5852.7	76.4%	17726.4	66.3%	23579.1	68.6%	73.6%		
Total	7659.7	100.0%	26730.8	100.0%	34390.6	100.0%	76.8%		

Note: FTE based on hours reported by the headcount of registered nurses who responded to area of nursing practice, hours worked, sector

Survey data have not been adjusted for unknown information (see p. 2)

Appendix A: Registered Nurse Workforce 2001
Table A.17: Registered nurse headcount and FTE by principal area of nursing practice and sector employed-second job (FTE calculated on 38 hours per week)

Hours per week	No.	%	No.	%	No.	%	Per cent public
	Private		Public		Total		
Registered nurse Headcount							
Emergency Department	26	1.1%	111	5.6%	137	3.1%	75.0%
Intensive care	134	5.7%	162	8.1%	296	6.8%	51.3%
Mental health	52	2.2%	94	4.7%	146	3.4%	57.0%
Midwifery	167	7.1%	176	8.9%	343	7.9%	49.4%
Operating Theatre	222	9.4%	104	5.2%	326	7.5%	30.4%
Other	1763	74.6%	1341	67.5%	3104	71.3%	40.0%
Total	2364	100.0%	1988	100.0%	4352	100.0%	42.9%
<i>Non response, speciality</i>	186		222		408	5.3%	
<i>Non response second job</i>					38400	89.0%	
Registered nurse headcount who responded to area of nursing practice, hours worked, sector							
Emergency Department	23	1.1%	96	5.5%	119	3.0%	78.0%
Intensive care	110	5.1%	131	7.5%	241	6.1%	52.4%
Mental health	50	2.3%	82	4.7%	132	3.4%	57.6%
Midwifery	152	7.0%	154	8.8%	306	7.8%	49.0%
Operating Theatre	204	9.4%	91	5.2%	295	7.5%	29.9%
Other	1634	75.2%	1193	68.3%	2827	72.1%	40.0%
Total	2173	100.0%	1747	100.0%	3920	100.0%	42.8%
<i>Non response, speciality, hrs</i>	137		146		283	6.2%	
<i>Non response, sector</i>					336	7.4%	
<i>Non response second job</i>					38621	89.2%	
Registered nurse FTE							
Emergency Department	4.6	0.7%	27.6	5.2%	32.2	2.8%	81.9%
Intensive care	30.2	4.8%	38.4	7.2%	68.7	5.9%	54.1%
Mental health	14.2	2.2%	27.4	5.2%	41.6	3.6%	61.2%
Midwifery	40.5	6.4%	39.6	7.4%	80.1	6.9%	48.3%
Operating Theatre	56.1	8.8%	27.5	5.2%	83.7	7.2%	32.0%
Other	488.8	77.0%	370.4	69.8%	859.2	73.7%	40.7%
Total	634.4	100.0%	530.9	100.0%	1165.4	100.0%	45.6%

Note: FTE based on hours reported by the headcount of registered nurses who responded to area of nursing practice, hours worked, sector

Table A.18: Paid hours usually worked per week by enrolled nurses - main job

Hours per week	No.	%	No.	%	No.	%	No.	%	
	Sex unknown		Female		Male		Total		Per cent female
1-9	5	1.8%	249	3.1%	16	2.7%	270	3.0%	94.0%
10-19	29	10.5%	958	11.9%	24	4.1%	1011	11.3%	97.6%
20-29	70	25.5%	2043	25.4%	63	10.7%	2176	24.4%	97.0%
30-37	52	18.9%	1487	18.5%	81	13.8%	1620	18.2%	94.8%
38-44	102	37.1%	2950	36.6%	356	60.5%	3408	38.2%	89.2%
45-49	3	1.1%	62	0.8%	5	0.9%	70	0.8%	92.5%
50-59	4	1.5%	55	0.7%	10	1.7%	69	0.8%	84.6%
60-69	3	1.1%	54	0.7%	9	1.5%	66	0.7%	85.7%
>70	7	2.5%	199	2.5%	24	4.1%	230	2.6%	89.2%
Total	275	100.0%	8057	100.0%	588	100.0%	8920	100.0%	93.2%
No hours reported	9	3.2%	444	5.2%	32	5.2%	485	5.2%	

Note: refer to Table 5.21

Table A.19: Paid hours usually worked per week by enrolled nurses - second job

Hours per week	No.	%	No.	%	No.	%	No.	%	
	Sex unknown		Female		Male		Total		Per cent female
1-9	8	36.4%	328	48.1%	28	49.1%	364	47.8%	92.1%
10-19	8	36.4%	248	36.4%	21	36.8%	277	36.4%	92.2%
20-29	6	27.3%	76	11.1%	5	8.8%	87	11.4%	93.8%
30-37	0	0.0%	17	2.5%	2	3.5%	19	2.5%	89.5%
38-44	0	0.0%	9	1.3%	0	0.0%	9	1.2%	100.0%
45-49	0	0.0%	1	0.1%	0	0.0%	1	0.1%	100.0%
50-59	0	0.0%	0	0.0%	0	0.0%	0	0.0%	0.0%
60-69	0	0.0%	1	0.1%	0	0.0%	1	0.1%	100.0%
>70	0	0.0%	2	0.3%	1	1.8%	3	0.4%	66.7%
Total	22	100.0%	682	100.0%	57	100.0%	761	100.0%	92.3%
No hours reported	262	92.3%	7819	92.0%	563	90.8%	8644	91.9%	

Note: refer to Table 5.22

Table A.20: Paid hours usually worked per week by enrolled nurses - both jobs

Hours per week	No.	%	No.	%	No.	%	No.	%	
	Sex unknown		Female		Male		Total		Per cent female
1-9	5	1.8%	244	3.0%	17	2.9%	266	3.0%	93.5%
10-19	26	9.5%	877	10.8%	24	4.0%	927	10.3%	97.3%
20-29	65	23.6%	1945	24.0%	58	9.8%	2068	23.1%	97.1%
30-37	53	19.3%	1510	18.7%	79	13.3%	1642	18.3%	95.0%
38-44	99	36.0%	2954	36.5%	345	58.2%	3398	37.9%	89.5%
45-49	6	2.2%	139	1.7%	13	2.2%	158	1.8%	91.4%
50-59	8	2.9%	129	1.6%	20	3.4%	157	1.8%	86.6%
60-69	6	2.2%	70	0.9%	9	1.5%	85	0.9%	88.6%
>70	7	2.5%	221	2.7%	28	4.7%	256	2.9%	88.8%
Total	275	100.0%	8089	100.0%	593	100.0%	8957	100.0%	93.2%
No hours reported	9	3.2%	412	4.8%	27	4.4%	448	4.8%	

Note: refer to Table 5.23

Survey data have not been adjusted for unknown information (see p. 2)

Appendix A: Enrolled Nurse Workforce 2001
Table A.21: Total hours usually worked per week by enrolled nurses - main job

Hours per week	No.	%	No.	%	No.	%	No.	%	
	Sex unknown		Female		Male		Total		Per cent female
1-9	5	1.8%	242	3.0%	15	2.5%	262	2.9%	94.2%
10-19	28	10.2%	954	11.7%	22	3.7%	1004	11.2%	97.7%
20-29	70	25.5%	2018	24.8%	64	10.8%	2152	23.9%	96.9%
30-37	51	18.5%	1480	18.2%	81	13.7%	1612	17.9%	94.8%
38-44	98	35.6%	2947	36.3%	354	59.7%	3399	37.8%	89.3%
45-49	6	2.2%	111	1.4%	9	1.5%	126	1.4%	92.5%
50-59	6	2.2%	88	1.1%	15	2.5%	109	1.2%	85.4%
60-69	4	1.5%	63	0.8%	9	1.5%	76	0.8%	87.5%
>70	7	2.5%	218	2.7%	24	4.0%	249	2.8%	90.1%
Total	275	100.0%	8121	100.0%	593	100.0%	8989	100.0%	93.2%
No hours reported	9	3.2%	380	4.5%	27	4.4%	416	4.4%	

Note: refer to Table 5.24

Table A.22: Total hours usually worked per week by enrolled nurses - second job

Hours per week	No.	%	No.	%	No.	%	No.	%	
	Sex unknown		Female		Male		Total		Per cent female
1-9	8	34.8%	328	47.3%	28	47.5%	364	46.9%	92.1%
10-19	9	39.1%	254	36.6%	23	39.0%	286	36.9%	91.7%
20-29	6	26.1%	79	11.4%	5	8.5%	90	11.6%	94.0%
30-37	0	0.0%	19	2.7%	2	3.4%	21	2.7%	90.5%
38-44	0	0.0%	9	1.3%	0	0.0%	9	1.2%	100.0%
45-49	0	0.0%	1	0.1%	0	0.0%	1	0.1%	100.0%
50-59	0	0.0%	0	0.0%	0	0.0%	0	0.0%	0.0%
60-69	0	0.0%	1	0.1%	0	0.0%	1	0.1%	100.0%
>70	0	0.0%	3	0.4%	1	1.7%	4	0.5%	75.0%
Total	23	100.0%	694	100.0%	59	100.0%	776	100.0%	92.2%
No hours reported	261	91.9%	7807	91.8%	561	90.5%	8629	91.7%	

Note: refer to Table 5.25

Table A.23: Total hours usually worked per week by enrolled nurses - all jobs

Hours per week	No.	%	No.	%	No.	%	No.	%	
	Sex unknown		Female		Male		Total		Per cent female
1-9	5	1.8%	237	2.9%	15	2.5%	257	2.8%	94.0%
10-19	25	9.1%	871	10.7%	22	3.7%	918	10.2%	97.5%
20-29	65	23.6%	1907	23.4%	57	9.5%	2029	22.4%	97.1%
30-37	51	18.5%	1497	18.3%	80	13.4%	1628	18.0%	94.9%
38-44	93	33.8%	2937	36.0%	339	56.6%	3369	37.3%	89.7%
45-49	11	4.0%	186	2.3%	21	3.5%	218	2.4%	89.9%
50-59	11	4.0%	178	2.2%	25	4.2%	214	2.4%	87.7%
60-69	6	2.2%	92	1.1%	9	1.5%	107	1.2%	91.1%
>70	8	2.9%	262	3.2%	31	5.2%	301	3.3%	89.4%
Total	275	100.0%	8167	100.0%	599	100.0%	9041	100.0%	93.2%
No hours reported	9	3.2%	334	3.9%	21	3.4%	364	3.9%	

Note: refer to Table 5.26

Table A.24: Estimated full-time equivalent enrolled nurses in workforce using average hours worked per week in total, all jobs (based on 38 hours per week defined as 1 FTE)

Hours per week	No.	%	No.	%	No.	%	No.	%	
	Sex unknown		Female		Male		Total		Per cent female
1-9	0.92105	0.4%	45	0.6%	3.0	0.5%	48.8	0.6%	93.7%
10-19	9.55263	3.9%	347.4	4.9%	8.6	1.4%	365.6	4.6%	97.6%
20-29	40.2105	16.3%	1167.9	16.5%	34.8	5.7%	1242.9	15.7%	97.1%
30-37	43.3947	17.6%	1278.3	18.1%	68.4	11.3%	1390.1	17.5%	94.9%
38-44	96.6053	39.2%	3045.2	43.1%	351.3	57.9%	3493.0	44.1%	89.7%
45-49	13.6842	5.6%	228.9	3.2%	25.9	4.3%	268.5	3.4%	89.8%
50-59	15.1316	6.1%	248.7	3.5%	34.6	5.7%	298.4	3.8%	87.8%
60-69	9.73684	4.0%	152.2	2.2%	14.7	2.4%	176.6	2.2%	91.2%
>70	17.1579	7.0%	557.4	7.9%	65.3	10.8%	639.9	8.1%	89.5%
Total	246.395	100.0%	7070.8	100.0%	606.6	100.0%	7923.8	100.0%	92.1%
<i>No. working hours</i>	275	52.7%	8,167	53.6%	599	49.7%	9041.0	53.3%	

Note: Table A.24 calculates the full-time equivalent (FTE) workforce assuming that 1 FTE works a 38 hour week.

Note: The total hours worked per week by the nurse numbers in Table A:23 are divided by 38 to calculate FTE.

Refer to Table 5.10 as this calculates FTE based on 35 hours per week

Table A.25: Enrolled nurse headcount and FTE by principal area of nursing practice and sector employed-main job (FTE calculated on 38 hours per week)

Hours per week	No.	%	No.	%	No.	%	
	Private		Public		Total		Percent public
Enrolled nurse headcount							
Emergency Dept.	1	0.0%	74	1.2%	75	0.9%	94.9%
Intensive care	1	0.0%	20	0.3%	21	0.3%	95.2%
Mental health	12	0.6%	186	2.9%	198	2.4%	89.8%
Midwifery	11	0.5%	49	0.8%	60	0.7%	81.7%
Operating Theatre	284	13.7%	360	5.7%	644	7.7%	55.6%
Other	1757	85.0%	5638	89.1%	7395	88.1%	74.5%
Total	2066	100.0%	6327	100.0%	8393	100.0%	74.1%
<i>Non response, speciality</i>	128	0	455	7.5%	583	11.4%	78.0%
<i>Non response sector</i>					429		
Enrolled nurse headcount who responded to area of nursing practice, hours worked, sector							
Emergency Dept.	1	0.0%	73	1.2%	74	0.9%	94.8%
Intensive care	1	0.0%	20	0.3%	21	0.3%	95.2%
Mental health	12	0.6%	182	2.9%	194	2.4%	89.9%
Midwifery	11	0.5%	47	0.8%	58	0.7%	81.0%
Operating Theatre	281	13.8%	355	5.7%	636	7.7%	55.7%
Other	1723	84.9%	5535	89.1%	7258	88.1%	74.7%
Total	2029	100.0%	6212	100.0%	8241	100.0%	74.2%
<i>Non response, speciality</i>	122	5.7%	411	6.2%	533	6.1%	77.1%
<i>Non response sector</i>					215		
Enrolled nurse FTE							
Emergency Dept.	0.5	0.0%	63.6	1.2%	64.1	0.9%	99.9%
Intensive care	0.6	0.0%	18.2	0.3%	18.9	0.3%	99.9%
Mental health	10.9	0.7%	175.7	3.3%	186.5	2.7%	99.7%
Midwifery	7.6	0.5%	40.5	0.8%	48.1	0.7%	99.5%
Operating Theatre	237.5	15.0%	327.7	6.1%	565.2	8.1%	98.1%
Other	1327.1	83.8%	4745.8	88.4%	6072.9	87.3%	99.2%
Total	1584.2	100.0%	5371.6	100.0%	6955.7	100.0%	99.2%

Note: FTE based on hours reported by the headcount of registered nurses who responded to area of nursing practice, hours worked, sector

Survey data have not been adjusted for unknown information (see p. 2)

Appendix A: Enrolled Nurse Workforce 2001
Table A.26: Enrolled nurse headcount and FTE by principal area of nursing practice and sector employed-second job (FTE calculated on 38 hours per week)

Hours per week	No.	%	No.	%	No.	%	
	Private		Public		Total		Per cent public
Enrolled nurse Headcount							
Emergency Department	0	0.3%	6	0.9%	6	0.6%	80.0%
Intensive care	2	0.3%	1	0.2%	3	0.3%	50.0%
Mental health	9	1.9%	11	4.0%	20	3.1%	70.8%
Midwifery	4	0.6%	1	0.7%	5	0.6%	60.0%
Operating Theatre	34	10.5%	28	3.5%	62	6.8%	28.3%
Other	278	86.5%	364	90.5%	642	88.7%	55.0%
Total	327	100.0%	411	100.0%	738	100.0%	53.9%
<i>Non response, speciality</i>	41		59		100	1.1%	
<i>Non response second job</i>					8567	91.1%	
Enrolled nurse headcount who responded to area of nursing practice, hours worked, sector							
Emergency Department	0	0.0%	5	1.4%	5	0.8%	100.0%
Intensive care	2	0.7%	1	0.0%	3	0.0%	0.0%
Mental health	8	2.7%	9	2.6%	17	2.6%	52.9%
Midwifery	3	1.0%	1	0.3%	4	0.6%	25.0%
Operating Theatre	32	10.8%	22	6.3%	54	8.3%	40.7%
Other	252	84.8%	313	89.2%	565	87.2%	55.4%
Total	297	100.0%	351	100.0%	648	100.0%	54.2%
<i>Non response, speciality, hrs</i>	33		32		65	8.7%	
<i>Non response, sector</i>					34	4.6%	
<i>Non response second job</i>					8658	92.1%	
Enrolled nurse FTE							
Emergency Department	0.0	0.0%	1.2	1.1%	1.2	0.6%	100.0%
Intensive care	0.6	0.7%	0.4	0.4%	1.1	0.5%	0.0%
Mental health	3.2	3.4%	2.3	2.0%	5.5	2.6%	41.4%
Midwifery	1.5	1.5%	0.2	0.2%	1.7	0.8%	12.5%
Operating Theatre	9.7	10.2%	8.0	7.1%	17.7	8.5%	45.3%
Other	80.3	84.2%	101.1	89.3%	181.4	87.0%	55.7%
Total	95.3	100.0%	113.3	100.0%	208.6	100.0%	54.3%