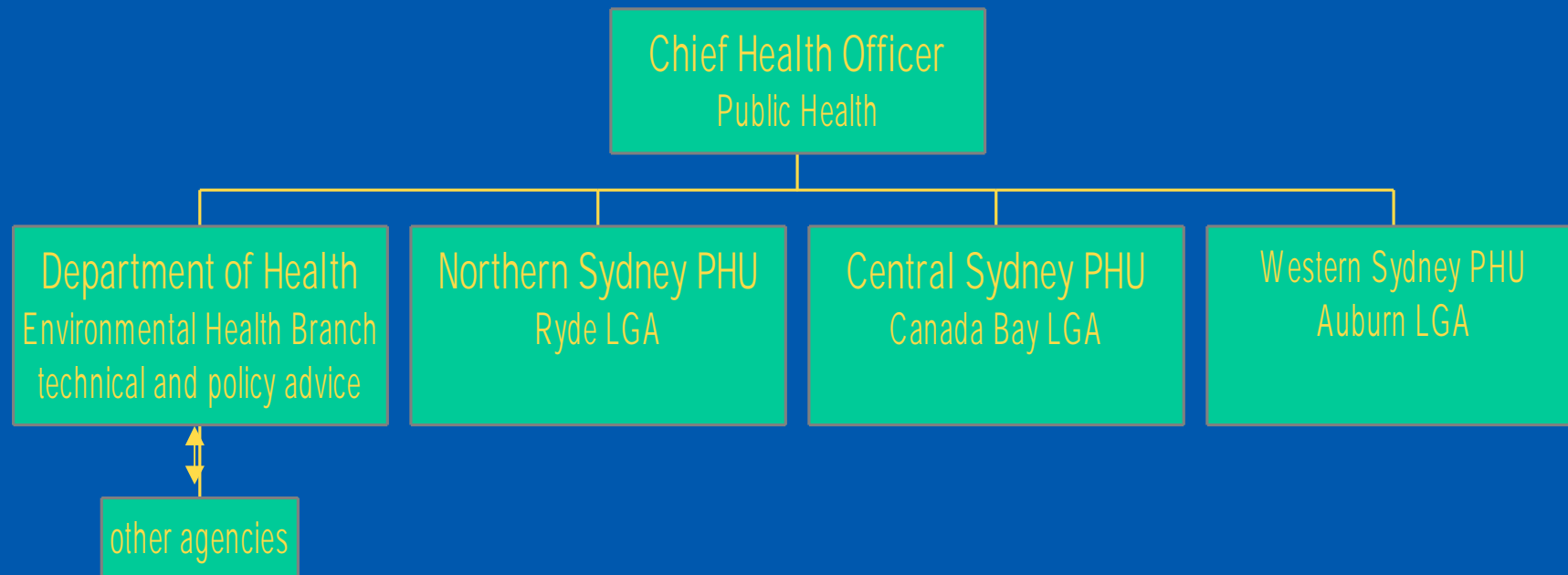


NSW Health and Rhodes

- Involved in planning and reviewing risk assessments since late 1980s.
- Liaising with EPA, other government agencies and remediators in current EIS plans
- WorkCover is responsible for occupational health issues

NSW Health and Rhodes



What are health studies?

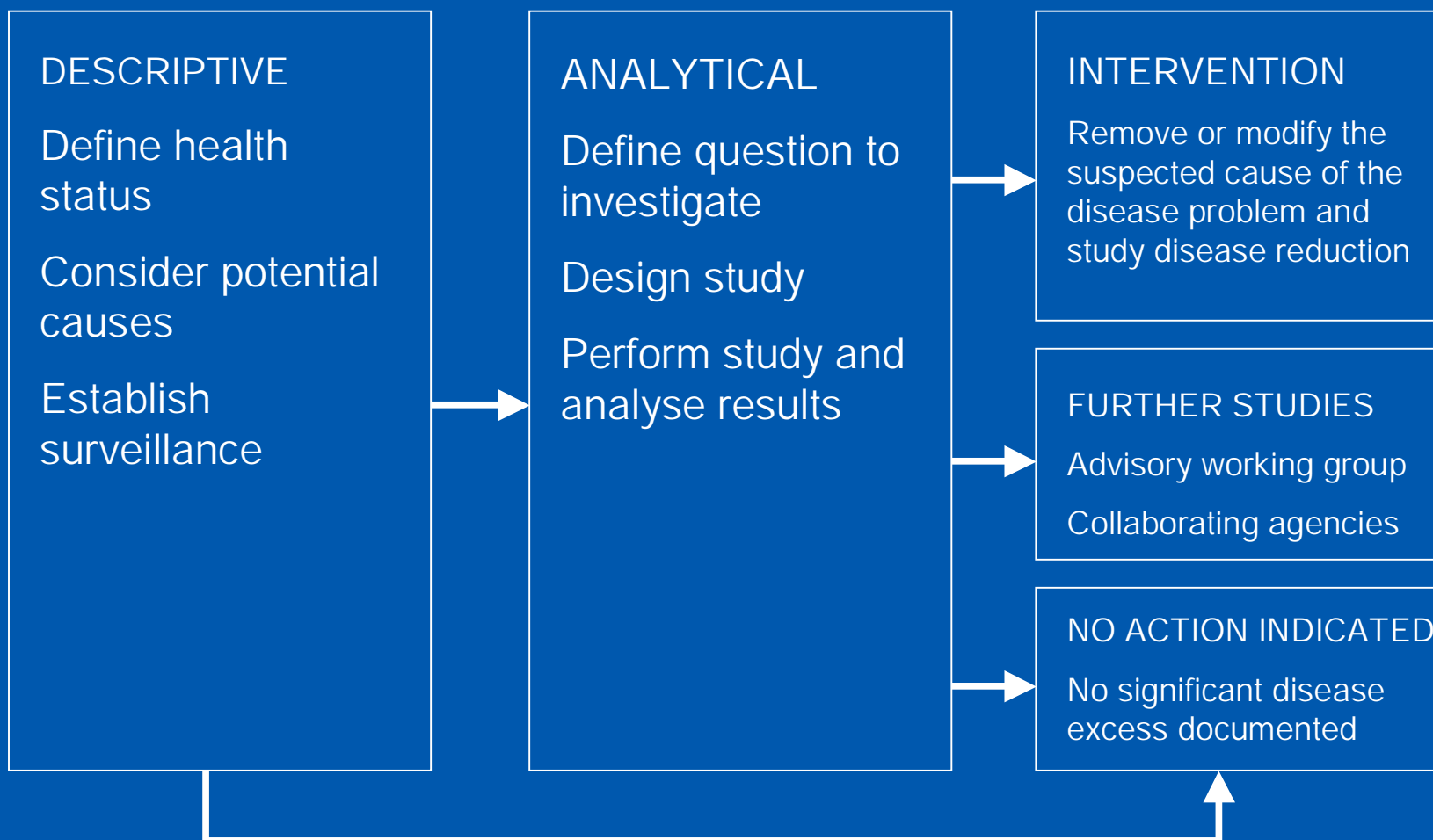
Descriptive

- to describe the occurrence of a health problem in a population
- is the health problem more common in this area ?- needs a comparison population.

Analytical

- to study what causes health problems

Logical development of health studies



Descriptive studies

- Case report, case series
- Correlative studies
- Cross sectional studies

Correlational studies

- correlates general characteristics of a population with health problem frequency during the same period of time; or
- within the same population at different point in time
- collects information from population as a whole
- example - rise in lung cancer with smoking rates

Cross sectional study

- Examines the frequency of a health problem
- OR
- examines the association between the exposure and health problem
 - collects information from individuals
 - Exposure and disease status of individual is assessed at the same time
 - example - cholera and Broad Street pump

Example - cholera & water pump

- Or arsenic in Bangladesh

Analytical studies

- Observational studies
 - Cohort study
 - Case control study
- Experimental studies

Cohort study

