

Appendix A

Methodology

(a) Timing of the Survey

Information from the 2003 Annual Medical Labour Force Survey relates to the 2003 registration renewal period. Up until 2001 renewal notices and surveys were forwarded in August to all medical practitioners registered with the New South Wales Medical Board (referred to as the Medical Board below) at that time, and the renewal fee was due by 31 October in the same year in order for the medical practitioner to be retained on the register. Survey respondents completed the survey with information about their usual working situation at that time.

In 2001 the Board changed its process of registration so that renewal notices and survey forms are now sent out on a monthly basis. Therefore survey forms are received by the Medical Board throughout the year and the survey forms are scanned and a file of survey returns compiled in the following year.

(b) Utilisation of Board Information

The data on medical practitioners' sex, year of birth and major qualifications are provided by the Board to eliminate the need to collect this information annually on the survey form.

(c) Survey coverage

Information from the medical labour force survey does not cover all registered medical practitioners in NSW. Previously only those registrants renewing their registration were forwarded a survey, and only renewals were included in the definition of the survey population. However in 2001 and 2003 some new registrants and restorations also received and returned forms, and therefore new decision making rules were applied regarding calculation of survey population and sample size. These categories are defined as follows:

- **New registrants:** New registrants include new local graduates, interstate graduates and overseas trained medical practitioners registering for the first time with the NSW Medical Board. It includes medical practitioners in the categories of conditional, full and non practising registration in NSW.
- **Restorations:** Restorations are persons who have been restored to the Register after a period in which they were not financial.
- **Technical restorations:** Technical restorations are medical practitioners who are restorations simply due to late payment, as they are removed from the Register and then reinstated on receipt of the payment of the renewal fee. If this group has provided survey data they have been included in the data analysis for this profile and classified as technical restorations.
- **Technical renewals:** There are a group of medical practitioners who either pay their registration fee early (say in December for January renewals in the year of the survey), or who pay in advance and earn a credit as they will not be able to make their payment at the usual time. If these medical practitioners were sent a survey form in the year of renewal and are still financial in that year they have now been included in the survey population, and their returned survey forms included as respondents. This group has now been defined as **technical renewals, even though no transaction may have been recorded for the year of the survey**. The inclusion of these medical practitioners for 2003 increased the population count and the number of respondents in that year.

For compatibility with other profiles prepared for health workforce groups registered in NSW, the definition of response is those respondents who completed the question on workforce status. In addition, it has been identified that a number of respondents have not completed the question on workforce status, but have completed the majority of the remainder of the survey form including the provision of a New South Wales postcode for work location, as well as other data such as hours worked. It was therefore

decided for data completeness, to include both of those categories in the definition of respondents, as a workforce status could be derived and it was known that they were working in New South Wales.

Table A1.1: Persons Registered as Medical Practitioners in NSW, 2003

Category of registration	No.	No.	Row %	No.	Row %	No.	Total %
	Sex unknown ³	Female		Male		Total	
New registrants ⁴	93	548	43.3%	717	56.7%	1,358	100.0%
Total Restorations:	0	59	31.6%	128	68.4%	187	100.0%
"True" restorations	0	24	37.5%	40	62.5%	64	100.0%
"Technical" restorations ⁴	0	35	28.5%	88	71.5%	123	100.0%
Renewals ⁴	3	7,035	30.4%	16,125	69.6%	23,163	100.0%
Technical renewals ⁴	0	0	0.0%	0	0.0%	0	100.0%
Deletions	12	553	31.0%	1,216	68.3%	1,781	100.0%

Notes:

1 The table includes information on medical practitioners who were financial with the Board during 2003.

2 Some medical practitioners may be included in more than one category during the twelve month period.

3 There were 108 new registrations, renewals and deletions with no sex reported

4 New registrations with a survey form, technical restorations (restorations with a survey form), renewals and technical renewals with a survey form are classified as respondents

There were 24,708 medical practitioners registered with the Medical Board in 2003 in the categories of full, conditional and non practising registration, excluding 1,781 medical practitioners who let their registration lapse within that time period. Females were 31.1% of total registrants and males 68.9%.

The labour force characteristics of new registrants and restorations may vary from other registrants who are part of the survey target group, and only some of these categories of registrants are sent a survey form. Any extrapolation of their demographic characteristics or work patterns from the survey data should be made with care. Table A1.3 in Appendix B provides data on the age and sex profile of all new registrations and restorations as well as renewals.

(d) Sample size, response rate, participation rate and estimates of total workforce size

Table B shows the trends in categories of registration, survey respondents, response rate, participation rate and estimates of total medical practitioner workforce size in NSW between 1993 and 2003. Table B reports two estimates of workforce size based on:

- a) Extrapolation from response rate assuming unknown respondents participate in the workforce at the same rate as known respondents, and assuming that 90% of new registrations without a survey form and 80% of true restorations are in the workforce. This results in an estimated workforce size of 19,867.
- Revised workforce estimates involving a detailed weighting of the data file using the variables of category of registration (new, renewal, restoration), category of medical practitioner and workforce status. This results in an estimated workforce size of 20,245.

Table A1.2: Trends in sample size, response rate, participation rate and estimates of workforce size 1993-2003

Year of survey	1993	1994	1995	1996	1997	1998	1999	2000	2001	2002	2003
Categories of registration											
New registrants	1,679	1,242	1,256	1,360	846	938	687	974	894	978	1,358
Renewals	18,584	19,745	20,307	20,823	21,820	22,676	23,350	22,908	23,409	24,011	23,163
Restorations/other	617	540	539	587	178	240	370	261	133	137	187
Temporary registrants								592			
Registrants	20,880	21,527	22,102	22,770	22,844	23,854	24,407	24,735	24,436	25,126	24,708
Workforce estimate based on response rate											
	16738	17259	17728	18343	18480	19030	19211	18,915	19,295	19,716	19,867
response rate	89.0%	93.1%	92.3%	92.0%	88.9%	88.4%	85.3%	90.0%	24.9%	71.5%	80.5%
GP	7483	7003	6804	8047	8320	8185	8306	8072	8078	8083	8110
specialists	5917	5483	5584	6238	6359	6623	6718	6913	7042	7170	7299
specialists in training	1548	1448	1465	1682	1830	1894	1968	1892	2058	2224	2268
non specialists hospital	1412	1754	1826	2156	2558	2560	2661	2433	2408	2383	2526
Additive Total	16361	15689	15678	18123	19067	19262	19652	19311	19586	19861	20203
Additive total as % of workforce estimate	97.7%	90.9%	88.4%	98.8%	103.2%	101.2%	102.3%	102.1%	101.5%	100.7%	101.7%
Method of adjustment	increase to 100%	increase to 100%	increase to 100%	increase to 100%	use category allocation	reduce to 100%	reduce to 100%	use category allocation	weighted mid point	use category allocation	use category allocation
Revised workforce estimates											
GP	7656	7704	7693	8145	7982	8086	8120	7654	7803	8006	7912
specialists	6054	6032	6314	6314	6452	6544	6567	6571	6834	7146	7242
specialists in training	1584	1593	1656	1702	1865	1871	1924	1963	2094	2239	2168
non specialists hospital	1444	1930	2064	2182	2420	2529	2601	2858	2697	2555	2923
Revised Total	16738	17259	17728	18343	18719	19030	19211	19046	19428	19946	20245
Variation from previous total workforce estimate based on response rate											
	0	0	0	0	239	0	0	131	133	230	378

Note: method of estimating new registrations changes for 2003

Table B shows that the response rate was 80.5%, higher than 2002.

e) Calculating category population estimates

A survey form change in 2000 resulted in medical practitioners having to nominate their primary practice area. The form for 2000 onwards requests nomination of the ONE area in which medical practitioners primarily practise, either GP/primary care practitioners, non-specialist hospital, specialists, or specialist in training. Previous survey forms allowed for the collection of multiple responses to this question and therefore the data from 2000 onwards for medical category is not directly comparable with previous years without adjustment. The workforce estimates by category from 1992 to 2002 reported in recent profiles have been recalculated to identify the estimated size of medical workforce categories over the period, and therefore the additive total of the size of the medical workforce.

The data on numbers identifying their primary practice area were calculated as a proportion of the total workforce and applied to the estimated workforce total by response rate. The additive total was then compared to the estimated workforce total. These two estimates varied over the time period, and ranged

from an under response to an over response, from as low as 88.4% in 1995 to 103.2% in 1997. Adjustments were therefore made as follows:

- Between 1992 and 1996 there was an under response, and therefore the category estimates were increased to the estimated workforce number based on response rate
- For 1997, 2000 and 2002 the category allocation method was used, where the allocation to primary category was made in the priority order of specialist, specialist in training, general practitioner, non specialist hospital practitioner
- There was no data available to calculate 1998 responses other than the original response by category, and as the over response was only 101.2%, it was decided to weight the response by category down to 100%
- 1999 data was particularly difficult to adjust, and the category allocation method resulted in major discontinuities in the time series data by category. As a result it was decided to weight the response by category down to 100%, the same method as for 1998.
- The calculation of 2000, 2002 and 2003 category estimates involved a detailed weighting of the data file using the variables of category of registration (new, renewal, restoration), medical practitioner category, and workforce status.
- The midpoint method was applied to the 2001 data, as the survey response was only 24.9% for 2001, due to a change in the method of mailing out renewal notices and therefore survey forms in that year.

Table B indicates that the final workforce estimates only vary by a small number from the original workforce estimates for 1997, 2000, 2001, 2002 and 2003. **The revised workforce estimates are now the preferred workforce estimates and category estimates for the time series 1993 to 2003.**

f) Definition of NSW workforce

In 2003, 79.8 per cent of the 18,748 respondents to the survey or 14,970 medical practitioners indicated that they were working only or mainly in NSW, or currently working, but on leave for three months or longer. These survey respondents are the unadjusted workforce and are referred to throughout the publication as medical practitioners working in NSW.

Notes to assist in interpreting data in this publication

g) Changes to the survey form in 2000

There were changes made to the questions on the 2000 survey form which have resulted in the need to apply different definitions to the data. One of the major changes was the collection of data on hours worked by location, rather than frequency responses on the number of jobs. Therefore the question on "three main locations where medical practitioners worked over the last four weeks and percentage of hours worked in each locality" (Q. 9 on the survey form) was used to determine the number of respondents working at one, two or three locations. In some cases, the same postcode was recorded for more than location.

The major constraint with this type of question is the high non response which results when respondents are asked to record hours worked. The non response rate in to the question on estimated number of locations was twenty percent in 2000, 11.3% in 2002 and 11.7% in 2003.

In addition, the question on work settings was changed to ask "how many hours per week over the last four weeks were worked in each of the following settings?" (Q.8 on the survey form). The non response rate to this question was 6.8% in 2000, 5.0% in 2002 and 4.6% in 2003.

The changes to the survey questions have resulted in constraints in the ability to compare data over time. Other changes to the survey form questions are documented below.

h) Other constraints on time series data

Care should be taken when analysing longitudinal data as not all data items are directly comparable across all years. A number of particular issues need to be considered:

- The annual labour force survey has been revised on a number of occasions between 1993 and 2003, with a major revision in 1994 and again to key questions in 2000. New questions have been added while others have been dropped; new categories have inevitably affected the number of medical practitioners responding to other categories.
- Information on primary care practitioners (section 4), specialists (section 5), specialists in training (section 6) and non-specialist hospital salaried medical practitioners (section 7) will be affected by changes in the way in which this information has been elicited from respondents.
- The extension of undergraduate medical training from five to six years resulted in a shortfall of one graduating class in 1992 (affecting 1992/93).
- In 1993, the survey reporting period was 15 months rather than the usual 12 months in order to bring the period in line with the NSW Medical Board's financial year. This artificially increased the number of new registrants reported in 1993 and reduced the proportion of recent medical graduates in that year's data. This occurred again in 1997, but data from 1996 to 1999 are not adjusted in order to allow comparability of data across this time period.
- Registration categories and the manner in which the data were provided by the Medical Board were changed in 1993, 2001 and 2003. This may affect in particular the classification of registrants as either renewals or restorations or new registrants.

As a result, data from 1994, 1995 and 1996 can be readily compared. Data from 1996 to 1999 can also be compared, apart from minor changes in 1998 to the categories of work status (not working categories only), remunerated hours worked per week (on call hours worked absorbed into direct patient care hours), and number of specialties coded (from 47 to 49 categories). Data from 2000 to 2003 can also be compared; apart from the method of estimating workforce size and participation rate as there were changes in the renewal process which resulted in some new registrants and restorations returning survey forms from 2002 onwards, and the method of counting new registrations which was changed in 2003 due to changes in the structure of the Board data file.

When comparing data from prior to 1994 consideration should be given to the effect of the extent of the discontinuities.

i) Figures have not been adjusted for non-response by question

Data in this publication have not been adjusted for non response to specific questions. However, a comparison of non response rates which are shown at the base of each table indicate that there were relatively similar non response levels to the main tables over the years of reporting profile data.

j) Data reported in the tables

Data has only been weighted to population estimates for a limited number of questions due to the constraints on error rates with small cell sizes.

k) Conventions used in this publication

Throughout this publication, figures within the tables may not add to the total shown where it has been necessary to round numbers. Percentages printed as 0.0 may denote less than 0.05%.

Italics are used to report unknown data.

0 is used for zero .

Bold is used to indicate a total or subtotal.

— denotes not applicable.

Vertical lines in tables note significant discontinuities.

n/a denotes data is not available.

Appendix B

Additional Information on
Medical Practitioners Registered
in NSW in 2003

Table B1.1 Type of registration by sex, all medical practitioners registered in NSW, 2003

Registration category	Sex unknown		Female		Male		Total		Per cent Female
	No.	%	No.	%	No.	%	No.	%	
Full	11	11.5%	6,488	84.9%	14,797	87.2%	21,296	86.2%	30.5%
Conditional	85	88.5%	828	10.8%	1,418	8.4%	2,331	9.4%	35.5%
Non-practicing	0	0.0%	326	4.3%	755	4.4%	1,081	4.4%	30.2%
Total Registrants	96	100.0%	7,642	100.0%	16,970	100.0%	24,708	100.0%	30.9%

Table B1.2 Age and sex, all medical practitioners registered in NSW, 2003

Age group	Sex unknown		Female		Male		Total		Per cent Female
	No.	%	No.	%	No.	%	No.	%	
Under 25	8	8.4%	77	1.0%	69	0.4%	154	0.6%	50.0%
25-29	29	30.5%	1059	14.1%	1176	7.1%	2,264	9.3%	46.8%
30-34	32	33.7%	1336	17.8%	1756	10.5%	3,124	12.9%	42.8%
35-39	15	15.8%	1197	15.9%	1876	11.2%	3,088	12.7%	38.8%
40-44	6	6.3%	1163	15.5%	2075	12.4%	3,244	13.4%	35.9%
45-49	4	4.2%	1029	13.7%	2195	13.2%	3,228	13.3%	31.9%
50-54	1	1.1%	650	8.6%	2001	12.0%	2,652	10.9%	24.5%
55-59	0	0.0%	446	5.9%	1903	11.4%	2,349	9.7%	19.0%
60-64	0	0.0%	242	3.2%	1368	8.2%	1,610	6.6%	15.0%
65-69	0	0.0%	133	1.8%	871	5.2%	1,004	4.1%	13.2%
70-74	0	0.0%	101	1.3%	674	4.0%	775	3.2%	13.0%
over 75	0	0.0%	82	1.1%	715	4.3%	797	3.3%	10.3%
Total	95	100.0%	7515	100.0%	16679	100.0%	24,289	100.0%	30.9%
<i>Age unknown</i>	<i>1</i>	<i>1.0%</i>	<i>127</i>	<i>1.7%</i>	<i>291</i>	<i>1.7%</i>	<i>419</i>	<i>1.7%</i>	

Figure B1.1 Comparison of age distribution of all medical practitioners registered in NSW and medical practitioners working in NSW, 2003

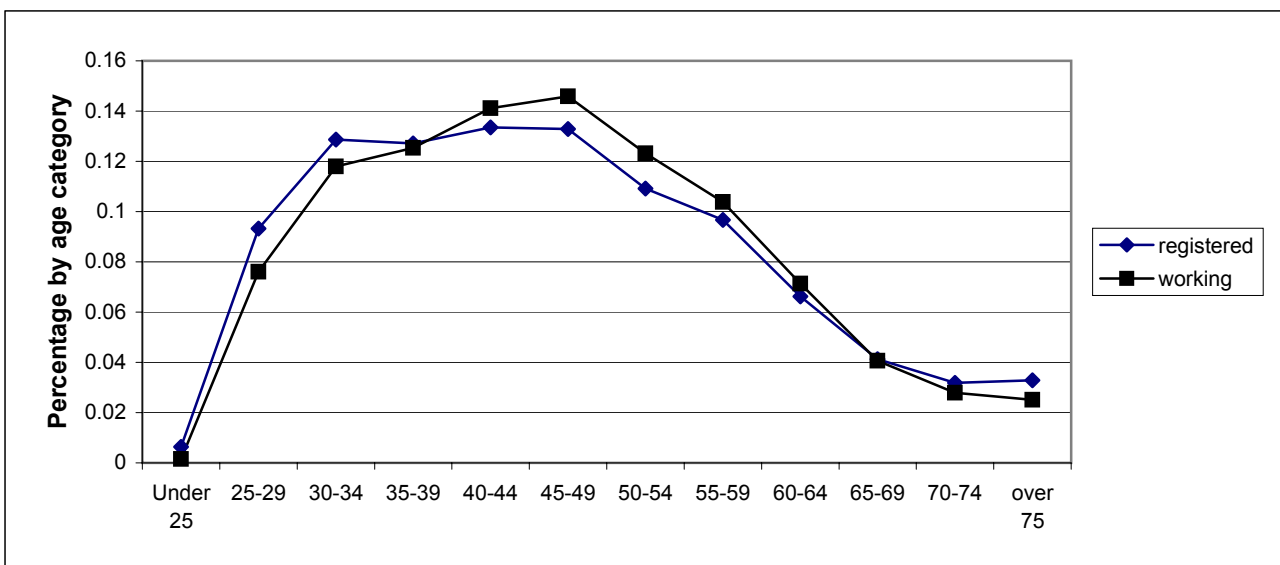


Table B1.3 Registration actions by age and sex of registrants—new registrations, restorations and renewals, NSW 2003

Age Group	Sex unknown		Female		Male		Total		Per cent female
	No.	%	No.	%	No.	%	No.	%	
New Registrations									
Under 25	8	8.7%	61	11.2%	59	8.2%	128	9.5%	47.7%
25-29	29	31.5%	246	45.1%	211	29.5%	486	35.9%	50.6%
30-34	31	33.7%	111	20.3%	159	22.2%	301	22.2%	36.9%
35-39	14	15.2%	65	11.9%	115	16.1%	194	14.3%	33.5%
40-44	5	5.4%	40	7.3%	56	7.8%	101	7.5%	39.6%
45-49	4	4.3%	12	2.2%	51	7.1%	67	4.9%	17.9%
50-54	1	1.1%	2	0.4%	26	3.6%	29	2.1%	6.9%
55-59	0	0.0%	3	0.5%	21	2.9%	24	1.8%	12.5%
60-64	0	0.0%	3	0.5%	9	1.3%	12	0.9%	25.0%
65-69	0	0.0%	3	0.5%	4	0.6%	7	0.5%	42.9%
70-74	0	0.0%	0	0.0%	5	0.7%	5	0.4%	0.0%
over 75	0	0.0%	0	0.0%	0	0.0%	0	0.0%	0.0%
Total	92	100.0%	546	100.0%	716	100.0%	1,354	100.0%	40.3%
<i>Sex unknown</i>	1	1.1%	2	0.4%	1	0.1%	4	0.3%	
Restorations									
Under 25	0	0.0%	0	0.0%	0	0.0%	0	0.0%	0.0%
25-29	0	0.0%	5	8.5%	12	9.6%	17	9.2%	29.4%
30-34	0	0.0%	15	25.4%	15	12.0%	30	16.3%	50.0%
35-39	0	0.0%	15	25.4%	19	15.2%	34	18.5%	44.1%
40-44	0	0.0%	7	11.9%	19	15.2%	26	14.1%	26.9%
45-49	0	0.0%	11	18.6%	13	10.4%	24	13.0%	45.8%
50-54	0	0.0%	3	5.1%	19	15.2%	22	12.0%	13.6%
55-59	0	0.0%	1	1.7%	8	6.4%	9	4.9%	11.1%
60-64	0	0.0%	1	1.7%	6	4.8%	7	3.8%	14.3%
65-69	0	0.0%	0	0.0%	5	4.0%	5	2.7%	0.0%
70-74	0	0.0%	0	0.0%	2	1.6%	2	1.1%	0.0%
over 75	0	0.0%	1	1.7%	7	5.6%	8	4.3%	12.5%
Total	0	0.0%	59	100.0%	125	100.0%	184	100.0%	32.1%
<i>Age unknown</i>	0	0.0%	0	0.0%	3	2.3%	3	1.6%	
Renewals									
Under 25	0	0.0%	16	0.2%	10	0.1%	26	0.1%	61.5%
25-29	0	0.0%	808	11.7%	953	6.0%	1,761	7.7%	45.9%
30-34	1	33.3%	1210	17.5%	1582	10.0%	2,793	12.3%	43.3%
35-39	1	33.3%	1117	16.2%	1742	11.0%	2,860	12.6%	39.1%
40-44	1	33.3%	1116	16.2%	2000	12.6%	3,117	13.7%	35.8%
45-49	0	0.0%	1006	14.6%	2131	13.5%	3,137	13.8%	32.1%
50-54	0	0.0%	645	9.3%	1956	12.4%	2,601	11.4%	24.8%
55-59	0	0.0%	442	6.4%	1874	11.8%	2,316	10.2%	19.1%
60-64	0	0.0%	238	3.4%	1353	8.5%	1,591	7.0%	15.0%
65-69	0	0.0%	130	1.9%	862	5.4%	992	4.4%	13.1%
70-74	0	0.0%	101	1.5%	667	4.2%	768	3.4%	13.2%
over 75	0	0.0%	81	1.2%	708	4.5%	789	3.5%	10.3%
Total	3	100.0%	6910	100.0%	15838	100.0%	22,751	100.0%	30.4%
<i>Age unknown</i>	0	0.0%	125	1.8%	287	1.8%	412	1.8%	
Summary — Major Categories									
New Registrants	93	96.9%	548	7.2%	717	4.2%	1358	5.5%	40.4%
Restorations	0	0.0%	59	0.8%	128	0.8%	187	0.8%	31.6%
Renewals	3	3.1%	7035	92.1%	16125	95.0%	23163	93.7%	30.4%
	96	100.0%	7642	100.0%	16970	100.0%	24708	100.0%	

Note

1 Individual registrants may have multiple or no registration actions recorded during a particular financial year. The summary includes percentages of total number of registrants in the categories above, who had conditional, full or non practicing registration status.

Table B1.4 Year of first registration in NSW by sex, all medical practitioners registered in NSW, 2003

Calendar year	No.	%	No.	%	No.	%	No.	%	
	Sex unknown		Female		Male		Total		Per cent Female
Before 1940	0	0.0%	0	0.0%	7	0.0%	7	0.0%	-
1940-44	0	0.0%	11	0.1%	71	0.4%	82	0.3%	13.4%
1945-49	0	0.0%	22	0.3%	119	0.7%	141	0.6%	15.6%
1950-54	0	0.0%	42	0.5%	353	2.1%	395	1.6%	10.6%
1955-59	0	0.0%	74	1.0%	469	2.8%	543	2.2%	13.6%
1960-64	0	0.0%	108	1.4%	685	4.0%	793	3.2%	13.6%
1965-69	0	0.0%	191	2.5%	1043	6.1%	1,234	5.0%	15.5%
1970-74	0	0.0%	288	3.8%	1474	8.7%	1,762	7.1%	16.3%
1975-79	0	0.0%	772	10.1%	2537	14.9%	3,309	13.4%	23.3%
1980-84	0	0.0%	884	11.6%	2059	12.1%	2,943	11.9%	30.0%
1985-89	0	0.0%	986	12.9%	1886	11.1%	2,872	11.6%	34.3%
1990-94	0	0.0%	1503	19.7%	2177	12.8%	3,680	14.9%	40.8%
1995-99	1	1.0%	986	12.9%	1573	9.3%	2,560	10.4%	38.5%
2000 and after	95	99.0%	1775	23.2%	2517	14.8%	4,387	17.8%	40.5%
Total Registrants	96	100.0%	7642	100.0%	16970	100.0%	24,708	100.0%	30.9%

Table B1.5 Working status of all respondents by sex, NSW Medical Labour Force Survey, 2003

Working status	No.	%	No.	%	No.	%	No.	%	
	Sex unknown		Female		Male		Total		Per cent female
Working in medicine									
Only in NSW	678	63.5%	4330	79.9%	9366	76.4%	14374	76.7%	31.6%
Mainly outside NSW	32	3.0%	84	1.6%	494	4.0%	610	3.3%	14.5%
Mainly in NSW	12	1.1%	89	1.6%	354	2.9%	455	2.4%	20.1%
Only outside NSW	38	3.6%	173	3.2%	614	5.0%	825	4.4%	22.0%
Overseas	29	2.7%	279	5.2%	696	5.7%	1004	5.4%	28.6%
On extended leave	6	0.6%	99	1.8%	36	0.3%	141	0.8%	73.3%
Not working in medicine									
Retired	240	22.5%	149	2.8%	497	4.1%	886	4.7%	23.1%
Currently not working	22	2.1%	143	2.6%	108	0.9%	273	1.5%	57.0%
Working, but not in medicine	10	0.9%	71	1.3%	99	0.8%	180	1.0%	41.8%
Total survey respondents	1067	100.0%	5417	100.0%	12264	100.0%	18748	100.0%	30.6%

Table B1.6 Working status of all respondents, NSW Medical Labour Force Survey, 1993 to 2003

Working status	1993	1994	1995	1996	1997	1998	1999	2000	2002	2003
Survey respondents										
Working in medicine										
In NSW	13,279	14,250	14,158	14,866	15,141	15,374	15,119	15,445	13,351	14,374
Mainly in NSW	370	405	463	442	433	478	507	483	460	610
Mainly outside NSW	510	554	585	575	583	604	689	642	427	455
Outside NSW	1,089	1,175	1,082	1,181	967	1,055	1,090	1,016	1,002	825
Overseas	999	979	958	969	1,000	1,034	1,001	1,075	1,070	1,004
On extended leave	138	150	118	130	137	134	142	118	135	141
Not working in medicine										
Working outside medicine	141	142	148	159	172	156	174	178	166	180
Not working	1,019	1,076	1,142	1,178	1,113	358	352	329	280	273
Retired	—	—	—	—	—	987	1,116	1,330	721	886
Total respondents	17,545	18,731	18,654	19,500	19,546	20,180	20,190	20,616	17,612	18,748
Total registrants	20,880	21,527	22,102	22,770	22,844	23,854	24,407	24,735	25,126	24,708
Registrants excluding temporary registrants										24,143
Percentage Distribution										
Working in medicine										
In NSW	75.7%	76.1%	75.9%	76.2%	77.5%	76.2%	74.9%	74.9%	75.8%	76.7%
Mainly in NSW	2.1%	2.2%	2.5%	2.3%	2.2%	2.4%	2.5%	2.3%	2.6%	3.3%
Mainly outside NSW	2.9%	3.0%	3.1%	2.9%	3.0%	3.0%	3.4%	3.1%	2.4%	2.4%
Outside NSW	6.2%	6.3%	5.8%	6.1%	4.9%	5.2%	5.4%	4.9%	5.7%	4.4%
Overseas	5.7%	5.2%	5.1%	5.0%	5.1%	5.1%	5.0%	5.2%	6.1%	5.4%
On extended leave	0.8%	0.8%	0.6%	0.7%	0.7%	0.7%	0.7%	0.6%	0.8%	0.8%
Not working in medicine										
Working outside medicine	0.8%	0.8%	0.8%	0.8%	0.9%	0.8%	0.9%	0.9%	0.9%	1.0%
Not working	5.8%	5.7%	6.1%	6.0%	5.7%	1.8%	1.7%	1.6%	1.6%	1.5%
Retired	—	—	—	—	—	4.9%	5.5%	6.5%	4.1%	4.7%
Total respondents	100.0%	100.0%	100.0%	100.0%	100.0%	100.0%	100.0%	100.0%	100.0%	100.0%
Percentage of total registrants	84.0%	87.0%	84.4%	85.6%	85.6%	84.6%	82.7%	83.3%	70.1%	75.9%

Table B1.7 New registrants in NSW by sex, 1993 to 2003

Sex	1993	1994	1995	1996	1997	1998	1999	2000	2002	2003
Female	619	465	480	567	292	386	253	382	367	548
Male	1,060	777	776	875	554	552	434	592	608	717
Total	1,679	1,242	1,256	1,442	846	938	687	974	975	1,265
<i>Unknown Sex</i>										3 93
Female	36.9%	37.4%	38.2%	39.3%	34.5%	41.2%	36.8%	39.2%	37.6%	43.3%
Male	63.1%	62.6%	61.8%	60.7%	65.5%	58.8%	63.2%	60.8%	62.4%	56.7%
Total	100.0%	100.0%	100.0%	100.0%	100.0%	100.0%	100.0%	100.0%	100.0%	100.0%

Notes

1 The 1993 reporting period was from December 1992 to March 1994. This has affected the number of new registrants reported in 1993.

2 Changes to the Board data file resulted in a variation in the method of counting new registrations in 2003

Table B1.7 Employment setting of all jobs by sex, primary care medical practitioners working in NSW, 2003

Employment setting	No.	%	No.	%	No.	%	No.	%	Per cent female
	Sex unknown		Female		Male		Total		
Public sector									
Ambulatory centre, day surgery, community health centre, outpatient clinic	3	1.9%	85	3.0%	101	1.9%	189	2.3%	45.7%
Aboriginal health service	2	1.2%	34	1.2%	26	0.5%	62	0.7%	56.7%
Hospital, including psychiatric hospital	10	6.2%	151	5.3%	442	8.2%	603	7.2%	25.5%
Other residential health facility	3	1.9%	42	1.5%	99	1.8%	144	1.7%	29.8%
Tertiary education institution	3	1.9%	49	1.7%	52	1.0%	104	1.2%	48.5%
Defence forces	4	2.5%	20	0.7%	45	0.8%	69	0.8%	30.8%
Government department/agency	0	0.0%	29	1.0%	29	0.5%	58	0.7%	50.0%
Other	2	1.2%	61	2.1%	50	0.9%	113	1.3%	55.0%
Total public sector	27	16.8%	471	16.4%	844	15.7%	1342	16.0%	35.8%
Private sector									
Private rooms/surgery	92	57.1%	1774	61.8%	3195	59.5%	5061	60.3%	35.7%
Ambulatory centre, day surgery, community health centre, outpatient clinic	2	1.2%	51	1.8%	113	2.1%	166	2.0%	31.1%
24 hour/other medical centre	9	5.6%	88	3.1%	213	4.0%	310	3.7%	29.2%
Aboriginal health service	3	1.9%	15	0.5%	18	0.3%	36	0.4%	0.0%
Hospital, including psychiatric hospital	7	4.3%	142	4.9%	342	6.4%	491	5.8%	29.3%
Other residential health facility	12	7.5%	154	5.4%	336	6.3%	502	6.0%	31.4%
Tertiary education institution	0	0.0%	26	0.9%	35	0.7%	61	0.7%	42.6%
Other	9	5.6%	148	5.2%	271	5.0%	428	5.1%	35.3%
Total private sector	134	83.2%	2398	83.6%	4523	84.3%	7055	84.0%	34.6%
Total	161	100.0%	2869	100.0%	5367	100.0%	8397	100.0%	34.8%
<i>Non-response:</i>	12		100		183		295		
	No.	% of total	No.	% of total	No.	% of total	No.	% of total	
Total no. of respondents	125	100.0%	2113	100.0%	3773	100.0%	6011	100.0%	35.9%
Total respondents public sector	21	16.8%	359	17.0%	671	17.8%	1051	17.5%	34.9%
Total respondents private sector	103	82.4%	1915	90.6%	3453	91.5%	5471	91.0%	35.7%

Notes

- 1 Data has been estimated from Question 8 of the survey form, "How many hours over the last 4 weeks did you work in each of the following settings?". Responses have been added for up to three settings, and therefore are multiple responses. The responses do not equate to jobs or positions, as a respondent may work in more than one location in a setting, but will only show total hours in that
- 2 Percentages by setting relate to total settings reported, not respondents
- 3 Respondents may report both public and private settings

Table B1.8 Employment setting of all jobs by sex, specialist medical practitioners working in NSW, 2003

Employment setting	No.		%		No.		%		Per cent female
	Sex unknown		Female		Male		Total		
Public sector									
Ambulatory centre, day surgery, community health centre, outpatient clinic	10	6.0%	190	10.3%	528	6.3%	728	7.0%	26.5%
Aboriginal health service	1	0.6%	9	0.5%	22	0.3%	32	0.3%	29.0%
Hospital, including psychiatric hospital	50	29.8%	596	32.2%	2405	28.5%	3051	29.2%	19.9%
Other residential health facility	1	0.6%	27	1.5%	42	0.5%	70	0.7%	39.1%
Tertiary education institution	10	6.0%	83	4.5%	287	3.4%	380	3.6%	22.4%
Defence forces	1	0.6%	9	0.5%	51	0.6%	61	0.6%	15.0%
Government department/agency	1	0.6%	40	2.2%	104	1.2%	145	1.4%	27.8%
Other	6	3.6%	44	2.4%	128	1.5%	178	1.7%	25.6%
Total public sector	80	47.6%	998	54.0%	3,567	42.2%	4645	44.4%	21.9%
Private sector									
Private rooms/surgery	42	25.0%	462	25.0%	2461	29.1%	2965	28.3%	15.8%
Ambulatory centre, day surgery, community health centre, out-patient clinic	12	7.1%	74	4.0%	447	5.3%	533	5.1%	14.2%
24 hour/other medical centre	0	0.0%	3	0.2%	53	0.6%	56	0.5%	5.4%
Aboriginal health service	1	0.6%	4	0.2%	25	0.3%	30	0.3%	0.0%
Hospital, including psychiatric hospital	22	13.1%	224	12.1%	1492	17.7%	1738	16.6%	13.1%
Other residential health facility	2	1.2%	9	0.5%	32	0.4%	43	0.4%	22.0%
Tertiary education institution	1	0.6%	10	0.5%	90	1.1%	101	1.0%	10.0%
Other	8	4.8%	65	3.5%	279	3.3%	352	3.4%	18.9%
Total private sector	88	52.4%	851	46.0%	4,879	57.8%	5818	55.6%	14.9%
Total	168	100.0%	1849	100.0%	8446.0	100.0%	10463	100.0%	18.0%
<i>Non-response:</i>	<i>10</i>		<i>45</i>		<i>161</i>		<i>216</i>		
		% of total	No.	% of total	No.	% of total	No.	% of total	
Total no. of respondents	101	100.0%	1061	100.0%	4248	100.0%	5410	100.0%	20.0%
Total respondents public sector	61	60.4%	742	69.9%	2775	65.3%	3578	66.1%	21.1%
Total respondents private sector	61	60.4%	620	58.4%	3108	73.2%	3789	70.0%	16.6%

Notes

1 Data has been estimated from Question 8 of the survey form, "How many hours over the last 4 weeks did you work in each of the following settings?". Responses have been added for up to three settings, and therefore are multiple responses. The responses do not equate to jobs or positions, as a respondent may work in more than one location in a setting, but will only show total hours in that setting.

2 Percentages by setting relate to total settings reported, not respondents

3 Respondents may report both public and private settings

Table B1.9 Employment setting of all jobs by sex, specialists in training working in NSW, 2003

Employment setting	No.		%		No.		%		Per cent female
	Sex unknown		Female		Male		Total		
Public sector									
Ambulatory centre, day surgery, community health centre, outpatient clinic	9	8.4%	81	10.2%	90	8.1%	180	9.0%	47.4%
Aboriginal health service	1	0.9%	7	0.9%	5	0.5%	13	0.6%	58.3%
Hospital, including psychiatric hospital	77	72.0%	579	73.2%	802	72.5%	1458	72.8%	41.9%
Other residential health facility	0	0.0%	5	0.6%	4	0.4%	9	0.4%	55.6%
Tertiary education institution	1	0.9%	21	2.7%	28	2.5%	50	2.5%	42.9%
Defence forces	0	0.0%	1	0.1%	8	0.7%	9	0.4%	11.1%
Government department/agency	2	1.9%	15	1.9%	16	1.4%	33	1.6%	48.4%
Other	1	0.9%	10	1.3%	15	1.4%	26	1.3%	40.0%
Total public sector	91	85.0%	719	90.9%	968	87.5%	1778	88.7%	42.6%
Private sector									
Private rooms/surgery	6	5.6%	23	2.9%	39	3.5%	68	3.4%	37.1%
Ambulatory centre, day surgery, community health centre, outpatient clinic	2	1.9%	4	0.5%	4	0.4%	10	0.5%	50.0%
24 hour/other medical centre	1	0.9%	5	0.6%	9	0.8%	15	0.7%	35.7%
Aboriginal health service	1	0.9%	1	0.1%	2	0.2%	4	0.2%	0.0%
Hospital, including psychiatric hospital	4	3.7%	31	3.9%	65	5.9%	100	5.0%	32.3%
Other residential health facility	1	0.9%	0	0.0%	3	0.3%	4	0.2%	0.0%
Tertiary education institution	1	0.9%	1	0.1%	2	0.2%	4	0.2%	33.3%
Other	0	0.0%	7	0.9%	14	1.3%	21	1.0%	33.3%
Total private sector	16	15.0%	72	9.1%	138	12.5%	226	11.3%	34.3%
Total	107	100.0%	791	100.0%	1106	100.0%	2004	100.0%	41.7%
<i>Non-response:</i>	3		33		17		53		
		% of total	No.	% of total	No.	% of total	No.	% of total	
Total no. of respondents	87	100.0%	684	100.0%	910	100.0%	1681	100.0%	42.9%
Total respondents public sector	81	93.1%	623	91.1%	847	93.1%	1551	92.3%	42.4%
Total respondents private sector	9	10.3%	60	8.8%	115	12.6%	184	10.9%	34.3%

Notes

- 1 Data has been estimated from Question 8 of the survey form, "How many hours over the last 4 weeks did you work in each of the following settings?". Responses have been added for up to three settings, and therefore are multiple responses. The responses do not equate to jobs or positions, as a respondent may work in more than one location in a setting, but will only show total hours in that setting.
- 2 Percentages by setting relate to total settings reported, not respondents
- 3 Respondents may report both public and private settings

Table B1.10 Employment setting of all jobs by sex, non-specialist hospital salaried medical practitioners working in NSW, 2003

Employment setting	No.	%	No.	%	No.	%	No.	%	Per cent female
	Sex unknown		Female		Male		Total		
Public sector									
Ambulatory centre, day surgery, community health centre, outpatient clinic	24	5.9%	60	7.9%	48	4.8%	132	6.1%	55.6%
Aboriginal health service	1	0.2%	4	0.5%	5	0.5%	10	0.5%	44.4%
Hospital, including psychiatric hospital	351	86.7%	551	72.1%	662	66.6%	1564	72.3%	45.4%
Other residential health facility	2	0.5%	13	1.7%	11	1.1%	26	1.2%	54.2%
Tertiary education institution	7	1.7%	14	1.8%	21	2.1%	42	1.9%	40.0%
Defence forces	1	0.2%	3	0.4%	6	0.6%	10	0.5%	33.3%
Government department/agency	0	0.0%	7	0.9%	12	1.2%	19	0.9%	36.8%
Other	10	2.5%	13	1.7%	18	1.8%	41	1.9%	41.9%
Total public sector	396	97.8%	665	87.0%	783	78.8%	1844	85.3%	45.9%
Private sector									
Private rooms/surgery	1	0.2%	34	4.5%	61	6.1%	96	4.4%	35.8%
Ambulatory centre, day surgery, community health centre, outpatient clinic	1	0.2%	4	0.5%	12	1.2%	17	0.8%	25.0%
24 hour/other medical centre	1	0.2%	3	0.4%	6	0.6%	10	0.5%	33.3%
Aboriginal health service	0	0.0%	2	0.3%	4	0.4%	6	0.3%	0.0%
Hospital, including psychiatric hospital	5	1.2%	48	6.3%	103	10.4%	156	7.2%	31.8%
Other residential health facility	0	0.0%	4	0.5%	7	0.7%	11	0.5%	36.4%
Tertiary education institution	1	0.2%	0	0.0%	3	0.3%	4	0.2%	0.0%
Other	0	0.0%	4	0.5%	15	1.5%	19	0.9%	21.1%
Total private sector	9	2.2%	99	13.0%	211	21.2%	319	14.7%	31.9%
Total	405	100.0%	764	100.0%	994	100.0%	2163	100.0%	43.5%
<i>Non-response:</i>	13		25		27		65		
		% of total	No.	% of total	No.	% of total	No.	% of total	
Total no. of respondents	379	100.0%	666	100.0%	827	100.0%	1872	100.0%	44.6%
Total respondents public sector	360	95.0%	601	90.2%	717	86.7%	1678	89.6%	45.6%
Total respondents private sector	6	1.6%	80	12.0%	162	19.6%	248	13.2%	33.1%

Notes

- 1 Data has been estimated from Question 8 of the survey form, "How many hours over the last 4 weeks did you work in each of the following settings?". Responses have been added for up to three settings, and therefore are multiple responses. The responses do not equate to jobs or positions, as a respondent may work in more than one location in a setting, but will only show total hours in that setting.
- 2 Percentages by setting relate to total settings reported, not respondents
- 3 Respondents may report both public and private settings

Table B1.11 Employment setting of all jobs by sex, FTE primary care medical practitioners working in NSW, 2003

Employment setting	No.		%		No.		%		Per cent female
	Unknown sex		Female		Male		Total		
Public sector									
Ambulatory centre, day surgery, community health centre, outpatient clinic	13.4	1.6%	145.6	3.5%	270.6	2.4%	429.5	2.6%	35.0%
Aboriginal health service	2.1	0.3%	14.8	0.4%	20.8	0.2%	37.6	0.2%	41.6%
Hospital, including psychiatric hospital	573.3	70.6%	1673.5	40.1%	3468.1	30.8%	5,714.9	35.2%	32.5%
Other residential health facility	2.3	0.3%	20.9	0.5%	31.0	0.3%	54.1	0.3%	40.3%
Tertiary education institution	15.8	1.9%	89.4	2.1%	200.8	1.8%	305.9	1.9%	30.8%
Defence forces	4.6	0.6%	15.8	0.4%	46.6	0.4%	67.0	0.4%	25.3%
Government department/agency	3.8	0.5%	58.1	1.4%	114.2	1.0%	176.0	1.1%	33.7%
Other	18.6	2.3%	60.6	1.5%	118.0	1.0%	197.1	1.2%	33.9%
Total public sector	633.8	78.1%	2078.5	49.8%	4269.9	37.9%	6,982.2	43.0%	32.7%
Private sector									
Private rooms/surgery	120.1	14.8%	1659.0	39.8%	5320.2	47.3%	7,099.3	43.7%	23.8%
Ambulatory centre, day surgery, community health centre, outpatient clinic	7.2	0.9%	35.5	0.9%	180.1	1.6%	222.8	1.4%	16.5%
24 hour/other medical centre	10.0	1.2%	70.0	1.7%	184.4	1.6%	264.3	1.6%	27.5%
Aboriginal health service	1.5	0.2%	6.0	0.1%	11.9	0.1%	19.3	0.1%	0.0%
Hospital, including psychiatric hospital	21.5	2.6%	161.8	3.9%	829.9	7.4%	1,013.2	6.2%	16.3%
Other residential health facility	6.9	0.8%	18.5	0.4%	50.0	0.4%	75.4	0.5%	26.9%
Tertiary education institution	0.9	0.1%	9.3	0.2%	28.5	0.3%	38.7	0.2%	24.6%
Other	9.7	1.2%	132.9	3.2%	381.5	3.4%	524.0	3.2%	25.8%
Total private sector	177.8	21.9%	2092.8	50.2%	6986.4	62.1%	9,256.9	57.0%	23.1%
Total	811.5	100.0%	4171.3	100.0%	11256.3	100.0%	16,239.1	100.0%	27.0%
<i>Non-response:</i>	42		218		424		684		
		% of total	No.	% of total	No.	% of total	No.	% of total	
Total no. of respondents	654	100.0%	4300	100.0%	9332	100.0%	14286	100.0%	31.5%
Total respondents public sector	522	79.8%	2298	53.4%	4975	53.3%	7795	54.6%	31.6%
Total respondents private sector	182	27.8%	2668	62.0%	6814	73.0%	9664	67.6%	28.1%
FTE ratio all respondents	1.2408		0.9701		1.2062		1.1367		
FTE ratio respondents public sector	1.2141		0.9045		0.8583		0.8957		
FTE ratio respondents private sector	0.9766		0.7844		1.0253		0.9579		

Notes

- 1 Data has been estimated from Question 8 of the survey form, "How many hours over the last 4 weeks did you work in each of the following settings?". Responses have been added for up to three settings, and therefore are multiple responses. The responses do not equate to jobs or positions, as a respondent may work in more than one location in a setting, but will only show total hours in that setting.
- 2 Percentages by setting relate to total settings reported, not respondents
- 3 Respondents may report both public and private settings
- 4 FTE calculated by dividing hours worked by 40 hours per week

Table B1.12 Employment setting of all jobs by sex, FTE specialist medical practitioners working in NSW, 2003

Employment setting	No.	%	No.	%	No.	%	No.	%	Per cent female
	Unknown sex		Female		Male		Total		
Public sector									
Ambulatory centre, day surgery, community health centre, outpatient clinic	2.4	2.3%	60.6	5.9%	172.6	3.5%	235.6	3.9%	26.0%
Aboriginal health service	0.2	0.2%	1.1	0.1%	4.4	0.1%	5.7	0.1%	20.5%
Hospital, including psychiatric hospital	37.2	36.7%	427.8	41.6%	1637.8	33.0%	2,102.8	34.5%	20.7%
Other residential health facility	0.1	0.0%	6.9	0.7%	9.1	0.2%	16.0	0.3%	43.2%
Tertiary education institution	6.6	6.5%	43.2	4.2%	133.8	2.7%	183.6	3.0%	24.4%
Defence forces	0.1	0.1%	2.1	0.2%	8.5	0.2%	10.7	0.2%	19.8%
Government department/agency	0.2	0.1%	26.0	2.5%	67.0	1.3%	93.1	1.5%	27.9%
Other	2.7	2.7%	22.2	2.2%	66.3	1.3%	91.2	1.5%	25.1%
Total public sector	49.3	48.7%	590.0	57.4%	2099.4	42.3%	2,738.6	45.0%	21.9%
Private sector									
Private rooms/surgery	30.4	29.9%	292.9	28.5%	1882.6	37.9%	2,205.8	36.2%	13.5%
Ambulatory centre, day surgery, community health centre, outpatient clinic	5.0	4.9%	18.8	1.8%	123.6	2.5%	147.3	2.4%	13.2%
24 hour/other medical centre	0.0	0.0%	2.1	0.2%	19.0	0.4%	21.1	0.3%	10.1%
Aboriginal health service	0.4	0.4%	0.3	0.0%	3.9	0.1%	4.6	0.1%	0.0%
Hospital, including psychiatric hospital	10.5	10.4%	80.8	7.9%	619.5	12.5%	710.8	11.7%	11.5%
Other residential health facility	0.1	0.0%	1.3	0.1%	3.7	0.1%	5.0	0.1%	26.1%
Tertiary education institution	0.2	0.1%	2.8	0.3%	21.6	0.4%	24.6	0.4%	11.5%
Other	5.6	5.5%	38.4	3.7%	189.7	3.8%	233.7	3.8%	16.8%
Total private sector	52.0	51.3%	437.4	42.6%	2863.4	57.7%	3,352.8	55.0%	13.3%
Total	101.4	100.0%	1027.3	100.0%	4962.8	100.0%	6,091.5	100.0%	17.2%
<i>Non-response:</i>	10		45		161		216		
		% of total	No.	% of total	No.	% of total	No.	% of total	
Total no. of respondents	101	100.0%	936	100.0%	3831	100.0%	4868	100.0%	19.6%
Total respondents public sector	61	60.4%	677	72.3%	2604	68.0%	3342	68.7%	20.6%
Total respondents private sector	61	60.4%	593	63.4%	2932	76.5%	3586	73.7%	16.8%
FTE ratio all respondents	1.0035		1.0976		1.2954		1.2513		
FTE ratio respondents public sector	0.8086		0.8714		0.8062		0.8195		
FTE ratio respondents private sector	0.8529		0.7376		0.9766		0.9350		

Notes

- 1 Data has been estimated from Question 8 of the survey form, "How many hours over the last 4 weeks did you work in each of the following settings?". Responses have been added for up to three settings, and therefore are multiple responses. The responses do not equate to jobs or positions, as a respondent may work in more than one location in a setting, but will only show total hours in that setting.
- 2 Percentages by setting relate to total settings reported, not respondents
- 3 Respondents may report both public and private settings
- 4 FTE calculated by dividing hours worked by 40 hours per week

Table B1.13 Employment setting of all jobs by sex, FTE specialists in training working in NSW, 2003

Employment setting	No.		%		No.		%		Per cent female
	Unknown sex		Female		Male		Total		
Public sector									
Ambulatory centre, day surgery, community health centre, outpatient clinic	3.3	3.1%	34.1	4.5%	38.7	3.4%	76.1	3.8%	46.8%
Aboriginal health service	0.0	0.0%	2.6	0.3%	3.2	0.3%	5.8	0.3%	44.4%
Hospital, including psychiatric hospital	94.3	87.8%	651.6	85.6%	977.5	85.2%	1,723.4	85.5%	40.0%
Other residential health facility	0.0	0.0%	3.8	0.5%	1.3	0.1%	5.1	0.3%	75.2%
Tertiary education institution	1.0	0.9%	8.7	1.1%	21.6	1.9%	31.3	1.5%	28.8%
Defence forces		0.0%	0.9	0.1%	2.9	0.3%	3.8	0.2%	23.8%
Government department/agency	2.0	1.9%	14.0	1.8%	12.5	1.1%	28.5	1.4%	52.7%
Other	1.4	1.3%	6.1	0.8%	10.7	0.9%	18.2	0.9%	36.4%
Total public sector	101.9	95.0%	721.7	94.8%	1068.4	93.1%	1,892.0	93.8%	40.3%
Private sector									
Private rooms/surgery	1.8	1.7%	12.0	1.6%	28.8	2.5%	42.7	2.1%	29.4%
Ambulatory centre, day surgery, community health centre, outpatient clinic	1.0	1.0%	1.4	0.2%	1.5	0.1%	3.9	0.2%	49.1%
24 hour/other medical centre	0.0	0.0%	2.1	0.3%	2.0	0.2%	4.0	0.2%	51.3%
Aboriginal health service	0.0	0.0%	0.3	0.0%	0.3	0.0%	0.6	0.0%	0.0%
Hospital, including psychiatric hospital	2.5	2.3%	17.4	2.3%	36.5	3.2%	56.3	2.8%	32.2%
Other residential health facility	0.0	0.0%	0.0	0.0%	1.6	0.1%	1.7	0.1%	0.0%
Tertiary education institution	0.0	0.0%	0.0	0.0%	0.1	0.0%	0.1	0.0%	33.3%
Other	0.0	0.0%	6.8	0.9%	8.7	0.8%	15.5	0.8%	43.8%
Total private sector	5.4	5.0%	39.9	5.2%	79.4	6.9%	124.7	6.2%	33.4%
Total	107.3	100.0%	761.6	100.0%	1147.8	100.0%	2,016.7	100.0%	39.9%
<i>Non-response:</i>	3		33		17		53		
		% of total	No.	% of total	No.	% of total	No.	% of total	
Total no. of respondents	87	100.0%	684	100.0%	910	100.0%	1681	100.0%	42.9%
Total respondents public sector	81	93.1%	623	91.1%	847	93.1%	1551	92.3%	42.4%
Total respondents private sector	9	10.3%	60	8.8%	115	12.6%	184	10.9%	34.3%
FTE ratio all respondents	1.2336		1.1134		1.2613		1.1997		
FTE ratio respondents public sector	1.2583		1.1584		1.2613		1.2198		
FTE ratio respondents private sector	0.6000		0.6650		0.6907		0.6779		

Notes

- 1 Data has been estimated from Question 8 of the survey form, "How many hours over the last 4 weeks did you work in each of the following settings?". Responses have been added for up to three settings, and therefore are multiple responses. The responses do not equate to jobs or positions, as a respondent may work in more than one location in a setting, but will only show total hours in that setting.
- 2 Percentages by setting relate to total settings reported, not respondents
- 3 Respondents may report both public and private settings
- 4 FTE calculated by dividing hours worked by 40 hours per week

Table B1.14 Employment setting of all jobs by sex, FTE non-specialist hospital salaried medical practitioners working in NSW, 2003

Employment setting	No.	%	No.	%	No.	%	No.	%	Per cent female
	Unknown sex		Female		Male		Total		
Public sector									
Ambulatory centre, day surgery, community health centre, outpatient clinic	5.5	1.2%	27.2	4.0%	19.6	2.0%	52.3	2.4%	58.2%
Aboriginal health service	0.4	0.1%	0.2	0.0%	1.4	0.1%	1.9	0.1%	10.0%
Hospital, including psychiatric hospital	443.1	92.4%	577.1	83.8%	741.0	76.6%	1,761.1	82.5%	43.8%
Other residential health facility	1.5	0.3%	6.7	1.0%	7.0	0.7%	15.1	0.7%	48.9%
Tertiary education institution	7.3	1.5%	9.1	1.3%	17.2	1.8%	33.6	1.6%	34.6%
Defence forces	0.3	0.1%	1.2	0.2%	2.9	0.3%	4.3	0.2%	28.6%
Government department/agency	0.0	0.0%	5.4	0.8%	12.0	1.2%	17.5	0.8%	31.1%
Other	13.0	2.7%	10.4	1.5%	17.6	1.8%	40.9	1.9%	37.1%
Total public sector	471.1	98.3%	637.1	92.5%	818.5	84.6%	1,926.7	90.2%	43.8%
Private sector									
Private rooms/surgery	0.2	0.0%	14.4	2.1%	44.6	4.6%	59.2	2.8%	24.3%
Ambulatory centre, day surgery, community health centre, outpatient clinic	0.2	0.0%	1.2	0.2%	3.1	0.3%	4.5	0.2%	28.5%
24 hour/other medical centre	0.5	0.1%	0.7	0.1%	2.3	0.2%	3.5	0.2%	22.7%
Aboriginal health service	0.0	0.0%	2.8	0.4%	0.2	0.0%	3.0	0.1%	0.0%
Hospital, including psychiatric hospital	6.6	1.4%	28.7	4.2%	85.7	8.9%	121.0	5.7%	25.1%
Other residential health facility	0.0	0.0%	0.2	0.0%	0.5	0.1%	0.7	0.0%	27.6%
Tertiary education institution	0.8	0.2%	0.0	0.0%	0.4	0.0%	1.2	0.1%	0.0%
Other	0.0	0.0%	3.5	0.5%	12.1	1.2%	15.6	0.7%	22.5%
Total private sector	8.3	1.7%	51.5	7.5%	148.8	15.4%	208.6	9.8%	25.7%
Total	479.4	100.0%	688.6	100.0%	967.3	100.0%	2,135.3	100.0%	41.6%
<i>Non-response:</i>	13		25		27		65		
		% of total	No.	% of total	No.	% of total	No.	% of total	
Total no. of respondents	379	100.0%	684	100.0%	910	100.0%	1973	100.0%	42.9%
Total respondents public sector	360	95.0%	623	91.1%	847	93.1%	1830	92.8%	42.4%
Total respondents private sector	6	1.6%	60	8.8%	115	12.6%	181	9.2%	34.3%
FTE ratio all respondents	1.2648		1.0067		1.0630		1.0822		
FTE ratio respondents public sector	1.3086		1.0227		0.9664		1.0529		
FTE ratio respondents private sector	1.3792		0.8575		1.2941		1.1522		

Notes

- 1 Data has been estimated from Question 8 of the survey form, "How many hours over the last 4 weeks did you work in each of the following settings?". Responses have been added for up to three settings, and therefore are multiple responses. The responses do not equate to jobs or positions, as a respondent may work in more than one location in a setting, but will only show total hours in that setting.
- 2 Percentages by setting relate to total settings reported, not respondents
- 3 Respondents may report both public and private settings
- 4 FTE calculated by dividing hours worked by 40 hours per week

Table B 1.15: Medical Practitioners seeking work in medicine in NSW, 2003

Type of work sought	No.	%	No.	%	No.	%	No.	%	%
	Sex unknown		Female		Male		Total		Female
Not looking for work in medicine	24	77.8%	184	83.5%	168	80.0%	376	81.2%	52.3%
Looking for work in medicine:									
- full time	2	2.2%	4	2.6%	14	2.2%	20	3.8%	22.2%
- part time	4	20.0%	22	12.4%	22	14.9%	48	14.3%	50.0%
Total	30	100.0%	210	100.0%	204	100.0%	444	100.0%	50.7%
<i>non response/unknown</i>	2	6.3%	4	1.9%	3	1.4%	9	2.0%	

Note: Table includes only those survey respondents in Table A1.5 who indicated that they were not currently working or currently working but not in medicine (n=453)

Table B 1.16: Average years remaining in workforce by age

Age	No.	No.	No.	No.
	Sex unknown	Female	Male	Total
19-24		29.9	49.8	35.9
25-29		30.2	32.2	31.3
30-34	30.0	26.5	28.5	27.6
35-39	25.0	22.8	23.7	23.3
40-44	20.0	19	19.9	19.6
45-49		15.2	15.7	15.6
50-54		11.9	12.6	12.5
55-59		9	9.4	9.3
60-64		6.7	6.8	6.8
65-69		5	5.4	5.3
70-74		6.3	4.8	4.9
75+		3.3	4.7	4.6
Total	25.9	19.6	16.3	17.8
<i>Unknown age</i>	25.9	18	19.6	24.2

Appendix C

Survey Questionnaire
Medical Practitioners Registered
in NSW in 2003

Table C1.1 Summary of data available from the annual medical labour force survey, 1993 – 2003

Data item from current survey	2001 to 2003	2000	1999	1998	1997	1996	1995	1994	1993
1 Registered interstate Registered in Vic Registered in Qld Registered in WA Registered in SA Registered in Tas Registered in NT Registered in ACT									
2 Australian citizen Permanent resident									
3 Postcode of residence									
4 Aboriginal or Torres Strait Islander									
5 Current working status Not working and seeking work Nature of work being sought									
6 Hours/week - standard - main job Hours/week - on call worked - main job Hours/week - on call not worked - main job Hours/week - total worked - main job Hours/week - standard - 2nd job Hours/week - on call worked - 2nd job Hours/week - on call not worked - 2nd job Hours/week - total worked - 2nd job Hours/week - standard - 3rd job Hours/week - on call worked - 3rd job Hours/week - on call not worked - 3rd job Hours/week - total worked - 3rd job Hours/week - unpaid	for all medical jobs only hours in direct patient contact, hours on call not worked and total hours, hours per job reported by setting from 2001								
7 Field of medicine - main job Field of medicine - 2nd job Field of medicine - 3rd job	no longer collected from 2001 for each job								
8 Employment setting - main Employment setting - 2nd Employment setting - 3rd	setting by hours worked						Sector and industry		
9 Postcode of work, main job Postcode of work, 2nd job Postcode of work, 3rd job	location by proportion of hrs							Locations Locations	
10 Weeks per year in scheduled sessions for patent care									
11 No. yrs intend to remain in workforce									
12 Type of medical practice GP specialisation GP qualifications GP working as.. Number of primary care practitioners at main practice location?								not comparable	
12 Non-specialist position type Non-specialist qualifications Right of Private practice? Awaiting entry to course? Years to be worked in this area?								not comparable	
12 Specialist Qualifications 1 Specialist Qualifications 2 Specialist Qualifications 3 Area of specialist practice 1 Area of specialist practice 2 Area of specialist practice 3			49 categories		47 categories		47 categories		46 categories
12 Training speciality Yr of training completion	49 categories		49 categories		47 categories		47 categories		46 categories
RB Sex Year of birth Year of first registration in NSW Registration status New registrant Renewal Restoration Restoration Recorded qualifications data								7 categories	
See over page for legend and notes.									

Summary of data available from the annual medical labour force survey, 1993 – 2003 (continued)

Legend

- || Indicates a significant review of the survey content that affects a number of questions or categories.
- | Indicates a change in question wording or categories that may reduce comparability of data.
- Indicates the data item is not available from the annual medical labour force survey for that year.
- RB Indicates registration data source from NSW Medical Board rather than survey.

Notes

- Questions no longer included on the survey are not summarised on Table A2.1.
- Major changes in classifications that affect data comparability are noted on the table.

Appendix D

Table D1.1 Estimated Residential Population by Health Service, 2003 data

Geographical Location	No.		%		No.		%	
	Female	Male	Total	Per cent female				
Metropolitan Areas								
Central Coast	156,406	4.6%	148,088	4.5%	304,494	4.5%	51.4%	
Central Sydney	253,121	7.5%	250,093	7.5%	503,214	7.5%	50.3%	
Hunter	282,682	8.4%	277,955	8.4%	560,637	8.4%	50.4%	
Illawarra	183,152	5.4%	181,736	5.5%	364,888	5.4%	50.2%	
Northern Sydney	408,198	12.1%	387,763	11.7%	795,961	11.9%	51.3%	
South Eastern Sydney	399,810	11.8%	393,924	11.8%	793,734	11.8%	50.4%	
South Western Sydney	408,708	12.1%	405,750	12.2%	814,458	12.1%	50.2%	
Wentworth	161,815	4.8%	159,624	4.8%	321,439	4.8%	50.3%	
Western Sydney	364,714	10.8%	365,228	11.0%	729,942	10.9%	50.0%	
Total Metropolitan	2,618,606	77.5%	2,570,161	77.3%	5,188,767	77.4%	50.5%	
Rural Areas								
Far West	23,121	0.7%	25,019	0.8%	48,140	0.7%	48.0%	
Greater Murray	130,788	3.9%	132,705	4.0%	263,493	3.9%	49.6%	
Macquarie	52,847	1.6%	52,710	1.6%	105,557	1.6%	50.1%	
Mid North Coast	139,637	4.1%	135,003	4.1%	274,640	4.1%	50.8%	
Mid Western	85,482	2.5%	86,436	2.6%	171,918	2.6%	49.7%	
New England	90,515	2.7%	89,849	2.7%	180,364	2.7%	50.2%	
Northern Rivers	138,478	4.1%	135,024	4.1%	273,502	4.1%	50.6%	
Southern	98,068	2.9%	99,032	3.0%	197,100	2.9%	49.8%	
Total Rural	758,936	22.5%	755,778	22.7%	1,514,714	22.6%	50.1%	
Total	3,377,542	100.0%	3,325,939	100.0%	6,703,481	100.0%	50.4%	

Source:

NSW DoH Interim Population Projections 2003