

6

Program navigation

6.1 Basic program navigation

There are two main screens to the program, the 'Load screen' and the 'Navigation screen'.

6.1.1 Load screen

The 'Load screen' is displayed on opening and closing the program and is shown in Figure 3. No functions can be performed when the 'Load screen' is visible.

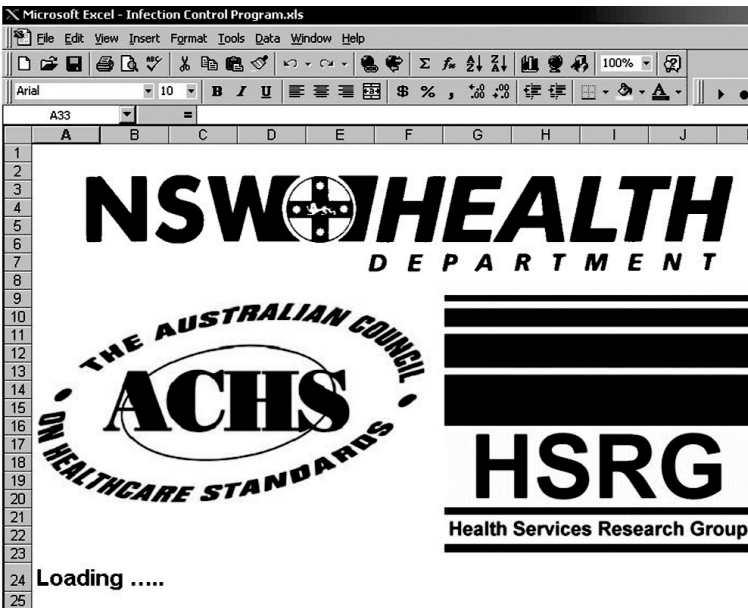


Figure 3 Load screen

6.1.2 Navigation screen

The **'Navigation screen'** contains the main menu and is used to gain access to the various sections (screens) of the program.

The **'Navigation screen'** displays four buttons as shown in Figure 4.

Using the **Return to navigation button** found on other screens in this program will return the user to the screen below (see Figure 4).

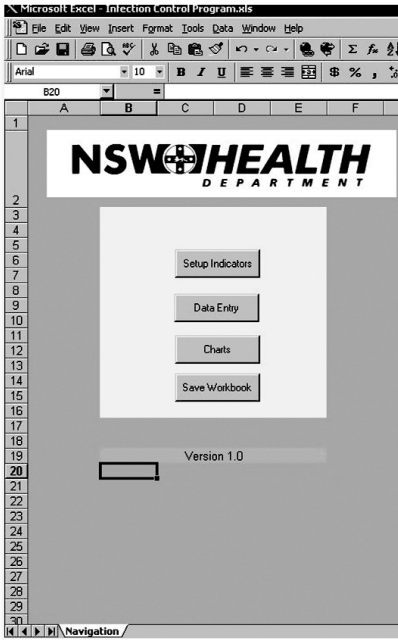


Figure 4 Navigation screen

6.2 Overview of the four sections

6.2.1 Set-up indicators

Clicking on this button will lead to the **'Set-up screen'**.

The **'Set-up screen'**:

- i displays all the indicators available for collection
- ii allows the user to select the indicators for collection.

6.2.2 Data entry

Clicking on this button will lead to the **'Data view screen'**.

This screen will display numerator and denominator data for the indicators that were selected from the **'Set-up indicators screen'**.

To select indicators refer to *7.2 Selecting Indicators for collection*.

By selecting the **Modify selected month button** on the **'Data view screen'** the **'Data entry screen'** can be opened.

The **'Data entry screens'**, **DataEntry_1** and **DataEntry_2** are used to enter daily numerator and daily or monthly denominator data.

- The type of data entry screen shown will depend on the indicator selected.
- The program will automatically select the appropriate **'Data entry screen'**.

6.2.3 Charts

Clicking on this button will lead to the **'Chart selection screen'**.

The **'Chart selection screen'** is used to:

- i select the indicator to be graphed
- ii display the indicator data (numerator and denominator data) as run charts and bar charts.

6.2.4 Save workbook

Clicking on this button will save all current work within the program.

