

System requirements

3

A computer with a CD-Rom.

Microsoft Excel 97™ or above is required to run this program.

Installing the program

4

The program will be distributed on CD-Rom.

To install the program on your computer:

- i Put the CD-Rom in the CD-Rom drive.
- ii Open the file on the CD called '**Install Infection Control.exe**':
 - a dialogue box will prompt where the files should be saved on your computer (see Figure 1)
 - the default location will be '**C:\NSW Infection Control**'
 - the program in this folder is called '**Infection Control Monitoring Program.xls**'. The users manual will also be copied to this folder.
- iii When installation is complete select the close button from the dialogue box.

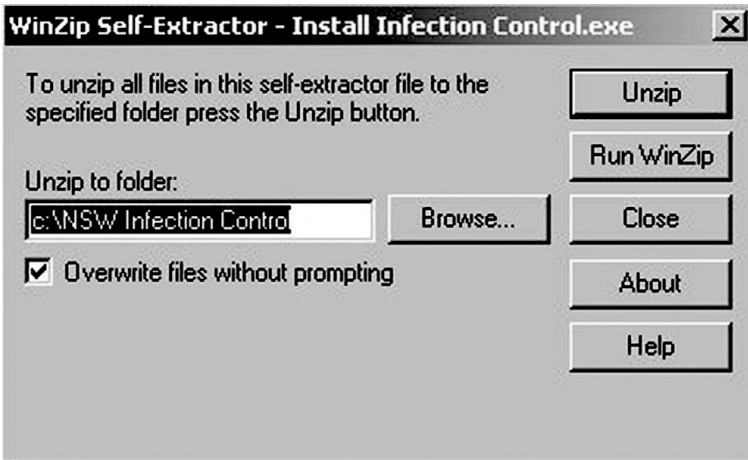


Figure 1 Installation screen

Running the program

5

After installation the program can be opened by following the steps below:

- i Select **'Infection Control Monitoring Program.xls'**:
 - the program is located in the folder called **NSW Infection Control**
 - the default location is **C:/NSW Infection Control**.
- ii A dialogue box will appear with the prompt **'the workbook you are opening contains macros'** (see Figure 2).
- iii Click **'Enable macros'** on the dialogue box.

Note: The default function of Excel(tm) is to disable macros, though to have access to all the functions of this program the enable macros button must be selected.

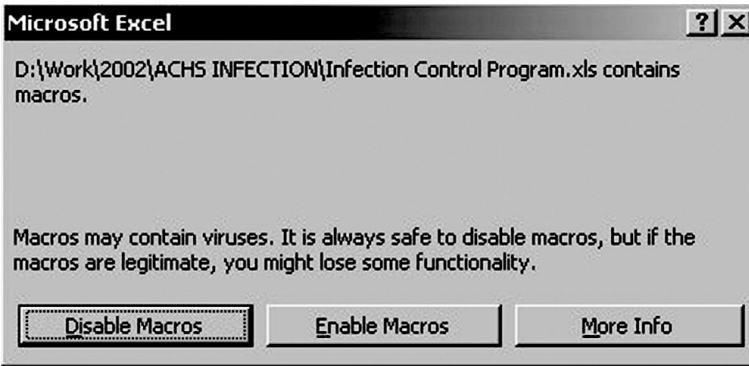


Figure 2 Enabling macros dialogue box

