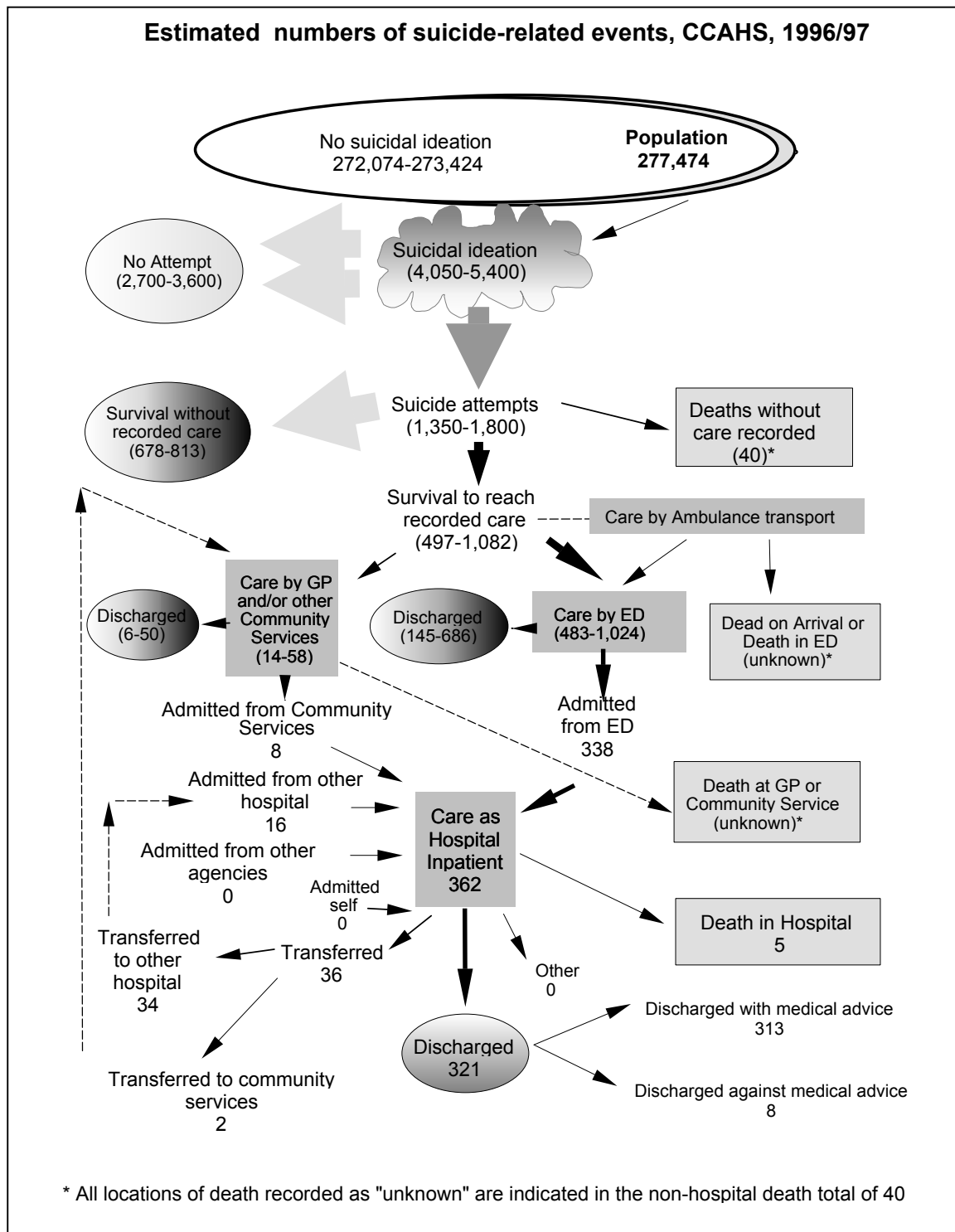


### Central Coast Area Health Service



**Note:** Suicide and self-inflicted injury were classified according to ICD9 (E950-E959) external cause codes. NSW population estimates at 31 December. 1996/97 year is the most recent year for which complete suicide data are available. \*All locations of death recorded as unknown is indicated in the non-hospital deaths. All numbers in brackets are estimates and should not be quoted without citing the explanation presented in: Sayer G, Stewart G, Chipps J. Suicide attempts in NSW: associated mortality and morbidity. NSW Public Health Bulletin 1996;7(6):55-63.

**Source:** ABS Mortality Data, NSW ISC Data and population estimates (HOIST), Centre for Mental Health, NSW Health Department. Estimates of mental health services were based on survey conducted in the Central Coast Health Service in February, March and April, 1998.

### Central Coast Area Health Service — Suicide Deaths and Directly Standardised Suicide Rates, 1973-2002, all ages

All agegroups						Males all agegroups						Females all agegroups					
Year of Death	Suicide Deaths	Population at risk	Directly Standardised Rates per 100,000	LCI	UCI	Year of Death	Suicide Deaths	Population at risk	Directly Standardised Rates per 100,000	LCI	UCI	Year of Death	Suicide Deaths	Population at risk	Directly Standardised Rates per 100,000	LCI	UCI
1973	15	105,482	16.2	7	31	1973	6	51,919	12.1	3	33	1973	9	53,563	20.5	7	46
1974	15	112,393	14.0	6	27	1974	11	55,272	22.7	9	48	1974	4	57,121	5.4	1	17
1975	15	118,958	12.1	5	23	1975	12	58,427	20.2	8	42	1975	3	60,531	4.3	0	16
1976	14	125,315	12.0	5	24	1976	9	61,458	15.3	5	35	1976	5	63,857	8.7	1	27
1977	7	133,265	6.9	2	17	1977	5	65,321	9.9	2	28	1977	2	67,944	4.2	0	19
1978	14	141,469	9.9	4	19	1978	10	69,300	14.3	5	31	1978	4	72,169	5.9	1	19
1979	14	149,767	10.9	5	21	1979	10	73,335	17.0	6	37	1979	4	76,432	5.4	1	17
1980	13	158,203	8.0	3	16	1980	9	77,493	11.2	4	25	1980	4	80,710	4.9	0	16
1981	18	166,750	11.4	5	21	1981	12	81,710	15.3	6	31	1981	6	85,040	8.2	2	23
1982	24	173,114	14.5	8	24	1982	18	84,830	22.3	11	40	1982	6	88,284	6.8	2	18
1983	17	178,940	10.1	5	19	1983	14	87,650	17.3	7	34	1983	3	91,290	2.9	0	11
1984	18	184,723	9.5	4	17	1984	15	90,433	16.0	7	31	1984	3	94,290	3.4	0	13
1985	25	190,864	13.4	7	22	1985	20	93,443	22.1	11	39	1985	5	97,421	4.9	1	14
1986	24	198,285	12.2	7	21	1986	20	97,116	21.5	11	38	1986	4	101,169	3.7	1	12
1987	27	206,928	13.4	7	22	1987	22	101,267	23.0	12	39	1987	5	105,661	4.6	1	13
1988	20	218,163	10.1	5	18	1988	15	106,713	15.9	7	30	1988	5	111,450	4.2	1	12
1989	32	227,563	15.0	9	23	1989	25	111,256	24.0	13	40	1989	7	116,307	6.0	2	15
1990	29	234,337	12.6	7	20	1990	23	114,546	20.6	11	35	1990	6	119,791	5.1	1	14
1991	38	239,812	15.8	10	24	1991	25	117,122	21.9	12	36	1991	13	122,690	10.1	4	20
1992	38	246,872	15.9	10	24	1992	31	120,548	27.7	16	44	1992	7	126,324	4.8	1	12
1993	21	252,986	8.7	4	15	1993	18	123,505	15.7	8	28	1993	3	129,481	1.9	0	7
1994	30	258,348	11.8	7	19	1994	24	126,103	20.0	11	33	1994	6	132,245	4.3	1	11
1995	29	264,118	11.4	7	18	1995	23	128,914	18.3	10	31	1995	6	135,204	4.7	1	12
1996	44	270,405	16.8	11	25	1996	36	131,941	28.8	18	44	1996	8	138,464	5.5	2	13
1997	47	276,132	18.6	12	27	1997	37	134,686	30.4	19	46	1997	10	141,446	7.5	3	16
1998	44	280,892	15.6	10	23	1998	36	136,871	26.9	16	41	1998	8	144,021	5.0	2	12
1999	44	286,810	16.8	11	25	1999	30	139,870	23.1	13	37	1999	14	146,940	11.1	5	21
2000	36	292,540	13.4	8	21	2000	30	142,679	23.4	13	37	2000	6	149,861	4.0	1	11
2001	25	298,072	9.4	5	16	2001	23	145,548	17.8	9	30	2001	2	152,524	1.6	0	8
2002	35	303,798	11.9	7	18	2002	22	148,379	16.1	8	28	2002	13	155,419	7.9	3	16

Source: ABS Mortality data and Population estimates - NSW Department of Health HOIST System. Rates were age-adjusted using the standard Australian population as at 30 June 1991  
 Suicide was classified according to ICD8 (E950-E959); ICD9 (E950-E959) and ICD10 (X60-X84 and Y87.0) external cause codes  
 LCI/UCI are the lower and upper bounds of a 99% CONFIDENCE INTERVAL based on the Poisson distribution  
 Note: 2002 data are incomplete (about 4-5 per cent of deaths are not registered in the year of death)

### Central Coast Area Health Service — Suicide Deaths and Directly Standardised Suicide Rates, 1973-2002, 15-24 year olds

Young people 15-24 years						Young males 15-24 years						Young females 15-24 years					
Year of Death	Suicide Deaths	Population at risk	Directly Standardised Rates per 100,000	LCI	UCI	Year of Death	Suicide Deaths	Population at risk	Directly Standardised Rates per 100,000	LCI	UCI	Year of Death	Suicide Deaths	Population at risk	Directly Standardised Rates per 100,000	LCI	UCI
1973	4	13,723	31.4	5	99	1973	2	6,898	32.4	2	150	1973	2	6,825	30.4	2	141
1974	0	14,567	0.0	.	.	1974	0	7,308	0.0	.	.	1974	0	7,259	0.0	.	.
1975	1	15,333	6.1	0	45	1975	1	7,665	11.8	0	88	1975	0	7,668	0.0	.	.
1976	0	16,147	0.0	.	.	1976	0	8,067	0.0	.	.	1976	0	8,080	0.0	.	.
1977	0	17,260	0.0	.	.	1977	0	8,652	0.0	.	.	1977	0	8,608	0.0	.	.
1978	2	18,320	11.0	1	51	1978	2	9,200	21.9	1	102	1978	0	9,120	0.0	.	.
1979	1	19,435	5.4	0	40	1979	0	9,776	0.0	.	.	1979	1	9,659	10.6	0	79
1980	0	20,362	0.0	.	.	1980	0	10,250	0.0	.	.	1980	0	10,112	0.0	.	.
1981	0	21,270	0.0	.	.	1981	0	10,720	0.0	.	.	1981	0	10,550	0.0	.	.
1982	1	21,974	4.6	0	34	1982	1	11,120	9.4	0	70	1982	0	10,854	0.0	.	.
1983	4	22,462	17.8	3	56	1983	4	11,404	35.1	6	111	1983	0	11,058	0.0	.	.
1984	2	23,039	8.8	0	41	1984	2	11,739	17.7	1	82	1984	0	11,300	0.0	.	.
1985	2	23,710	8.7	0	40	1985	2	12,130	17.3	1	80	1985	0	11,580	0.0	.	.
1986	2	24,564	8.2	0	38	1986	2	12,592	16.0	1	74	1986	0	11,972	0.0	.	.
1987	4	25,929	16.3	3	51	1987	4	13,257	32.1	5	101	1987	0	12,672	0.0	.	.
1988	3	27,453	12.3	1	45	1988	3	14,009	24.4	3	89	1988	0	13,444	0.0	.	.
1989	4	28,558	16.0	3	50	1989	3	14,547	23.7	3	87	1989	1	14,011	8.1	0	60
1990	4	29,354	14.7	2	46	1990	2	14,939	15.3	1	71	1990	2	14,415	14.0	1	65
1991	3	29,841	10.5	1	38	1991	3	15,153	20.7	2	76	1991	0	14,688	0.0	.	.
1992	6	30,376	19.8	5	52	1992	5	15,424	33.0	7	94	1992	1	14,952	6.3	0	47
1993	3	30,783	9.9	1	36	1993	3	15,617	19.5	2	72	1993	0	15,166	0.0	.	.
1994	6	31,118	19.3	5	50	1994	6	15,783	38.0	10	99	1994	0	15,335	0.0	.	.
1995	3	31,493	9.3	1	34	1995	3	15,974	18.2	2	67	1995	0	15,519	0.0	.	.
1996	8	31,811	25.4	8	59	1996	7	16,125	43.8	13	107	1996	1	15,686	6.5	0	49
1997	7	32,132	22.1	6	54	1997	6	16,324	37.8	10	99	1997	1	15,808	6.0	0	44
1998	5	32,660	16.2	3	46	1998	5	16,663	31.9	7	90	1998	0	15,997	0.0	.	.
1999	7	33,613	21.3	6	52	1999	3	17,211	19.5	2	71	1999	4	16,402	23.4	4	74
2000	8	34,562	25.3	8	59	2000	6	17,766	36.6	9	96	2000	2	16,796	13.4	1	62
2001	7	35,425	22.4	7	55	2001	6	18,041	38.0	10	99	2001	1	17,384	6.5	0	48
2002	5	36,464	14.2	3	40	2002	4	18,583	23.2	4	73	2002	1	17,881	5.1	0	38

Source: ABS Mortality data and Population estimates - NSW Department of Health HOIST System. Rates were age-adjusted using the standard Australian population as at 30 June 1991  
 Suicide was classified according to ICD8 (E950-E959); ICD9 (E950-E959) and ICD10 (X60-X84 and Y87.0) external cause codes  
 LCI/UCI are the lower and upper bounds of a 99% CONFIDENCE INTERVAL based on the Poisson distribution  
 Note: 2002 data are incomplete (about 4-5 per cent of deaths are not registered in the year of death)

### Central Coast Area Health Service — Suicide Deaths and Directly Standardised Suicide Rates, 1973-2002, 65+ year olds

Older people 65+ years						Older males 65+ years						Older females 65+ years					
Year of Death	Suicide Deaths	Population at risk	Directly Standardised Rates per 100,000	LCI	UCI	Year of Death	Suicide Deaths	Population at risk	Directly Standardised Rates per 100,000	LCI	UCI	Year of Death	Suicide Deaths	Population at risk	Directly Standardised Rates per 100,000	LCI	UCI
1973	2	16,979	10.3	1	48	1973	2	8,026	21.3	1	99	1973	0	8,953	0.0	.	.
1974	3	17,975	20.4	2	75	1974	2	8,449	30.1	2	140	1974	1	9,526	12.4	0	92
1975	3	18,876	14.0	2	51	1975	2	8,821	19.2	1	89	1975	1	10,055	9.2	0	68
1976	4	19,988	17.4	3	55	1976	3	9,289	27.4	3	100	1976	1	10,699	8.2	0	61
1977	1	21,269	6.2	0	46	1977	1	9,843	14.8	0	110	1977	0	11,426	0.0	.	.
1978	3	22,623	12.7	1	47	1978	2	10,431	19.3	1	91	1978	1	12,192	7.1	0	53
1979	1	24,038	7.1	0	53	1979	1	11,055	20.8	0	154	1979	0	12,983	0.0	.	.
1980	6	25,457	25.3	6	66	1980	4	11,697	34.6	5	110	1980	2	13,760	17.0	1	79
1981	5	26,800	21.5	4	62	1981	5	12,290	49.7	9	145	1981	0	14,510	0.0	.	.
1982	4	28,086	14.3	2	45	1982	3	12,784	24.6	3	90	1982	1	15,302	5.9	0	44
1983	5	29,252	18.4	4	53	1983	4	13,214	31.0	4	100	1983	1	16,038	7.8	0	58
1984	3	30,417	8.9	1	33	1984	2	13,658	12.6	1	58	1984	1	16,759	5.7	0	43
1985	4	31,700	12.3	2	39	1985	4	14,191	27.1	4	86	1985	0	17,509	0.0	.	.
1986	5	33,540	15.5	3	45	1986	5	14,993	38.8	5	117	1986	0	18,547	0.0	.	.
1987	6	35,215	17.7	4	47	1987	5	15,684	37.2	6	111	1987	1	19,531	5.1	0	38
1988	2	37,137	5.9	0	27	1988	1	16,466	6.1	0	46	1988	1	20,671	5.4	0	40
1989	5	38,888	12.1	3	34	1989	4	17,172	21.5	4	68	1989	1	21,716	4.4	0	32
1990	6	40,050	15.0	4	39	1990	4	17,631	23.0	4	73	1990	2	22,419	8.9	0	41
1991	9	41,279	21.7	8	48	1991	6	18,138	34.3	9	90	1991	3	23,141	12.3	1	45
1992	9	42,680	22.0	8	49	1992	5	18,722	30.8	6	89	1992	4	23,958	17.8	3	56
1993	4	44,124	10.2	2	32	1993	3	19,324	18.6	2	70	1993	1	24,800	3.9	0	29
1994	6	45,277	13.3	3	35	1994	5	19,804	28.3	6	81	1994	1	25,473	3.7	0	28
1995	3	46,301	6.6	1	24	1995	2	20,225	9.7	1	45	1995	1	26,076	4.7	0	35
1996	9	47,463	17.4	6	39	1996	7	20,718	30.9	9	76	1996	2	26,745	7.2	0	33
1997	4	48,535	8.8	1	28	1997	4	21,236	19.1	3	60	1997	0	27,299	0.0	.	.
1998	8	49,274	17.2	5	40	1998	6	21,556	28.8	7	75	1998	2	27,718	9.7	0	45
1999	3	50,119	5.3	1	20	1999	3	21,990	13.2	1	49	1999	0	28,129	0.0	.	.
2000	7	51,023	10.1	2	26	2000	5	22,323	17.4	2	53	2000	2	28,700	5.4	0	25
2001	3	52,252	4.6	1	17	2001	3	22,848	12.6	1	46	2001	0	29,404	0.0	.	.
2002	7	53,286	11.7	3	29	2002	3	23,299	11.4	1	42	2002	4	29,987	12.5	2	40

Source: ABS Mortality data and Population estimates - NSW Department of Health HOIST System. Rates were age-adjusted using the standard Australian population as at 30 June 1991  
 Suicide was classified according to ICD8 (E950-E959); ICD9 (E950-E959) and ICD10 (X60-X84 and Y87.0) external cause codes  
 LCI/UCI are the lower and upper bounds of a 99% CONFIDENCE INTERVAL based on the Poisson distribution  
 Note: 2002 data are incomplete (about 4-5 per cent of deaths are not registered in the year of death)