

CLASSIFICATION: Enrolled Nurses and Registered Nurses**Table C.1: Are you registered or enrolled as a nurse or midwife in more than one state or territory of Australia?**

	No.	%	No.	%	No.	%	No.	%	
	Working NSW		Not working NSW		Work Status Not Reported		Total		Percentage Working NSW
Yes	3447	7.3%	3180	20.5%	351	11.4%	6978	10.6%	52.0%
No	43582	92.7%	12330	79.5%	2723	88.6%	58635	89.4%	77.9%
Total	47029	100.0%	15510	100.0%	3074	100.0%	65613	100.0%	75.2%
<i>Non-Response</i>	1370	2.8%	449	2.8%	2199	41.7%	4018	5.8%	

Table C.2: States of Registration

	No.	%	No.	%	No.	%	No.	%	
	Working NSW		Not working NSW		Work Status Not Reported		Total		Percentage Working NSW
NSW	3950	59.9%	2198	33.3%	444	6.7%	6592	100.0%	64.2%
Vic.	597	38.3%	900	57.7%	62	4.0%	1559	100.0%	39.9%
Qld	688	33.9%	1241	61.1%	101	5.0%	2030	100.0%	35.7%
SA	95	34.4%	164	59.4%	17	6.2%	276	100.0%	36.7%
WA	164	35.7%	274	59.6%	22	4.8%	460	100.0%	37.4%
Tas.	51	30.7%	108	65.1%	7	4.2%	166	100.0%	32.1%
NT	166	43.2%	207	53.9%	11	2.9%	384	100.0%	44.5%
ACT	328	37.3%	510	58.0%	42	4.8%	880	100.0%	39.1%
Total (Other States)	2089	36.3%	3404	59.1%	262	4.6%	5755	100.0%	38.0%

Note: The question allows for multiple responses for other states of registration.

Table C.3: Category of Registration in NSW

	No.	%	No.	%	No.	%	No.	%	
	Working NSW		Not working NSW		Work Status Not Reported		Total		Percentage Working NSW
RN	40478	72.4%	12942	23.2%	2465	4.4%	55885	100.0%	75.8%
EN	7596	68.3%	2791	25.1%	737	6.6%	11124	100.0%	73.1%
Mothercraft nurse	584	59.9%	336	34.5%	55	5.6%	975	100.0%	63.5%
Direct entry midwife	519	58.6%	301	34.0%	65	7.3%	885	100.0%	63.3%
Total	49177	71.4%	16370	23.8%	3322	4.8%	68869	100.0%	75.0%

Table C.4: Authorised as:

	No.	Row %	No.	Row %	No.	Row %	No.	Row %	
	Working NSW		Not working NSW		Work Status Not Reported		Total		Percentage Working NSW
Authorised Midwife	10201	71.7%	3453	24.3%	576	4.0%	14230	100.0%	74.7%
Psychiatric/mental health nu	4080	72.7%	1261	22.5%	272	4.8%	5613	100.0%	76.4%
Nurse practitioner	3130	61.9%	1615	32.0%	308	6.1%	5053	100.0%	66.0%
Total	17411	69.9%	6329	25.4%	1156	4.6%	24896	100.0%	73.3%

Table C.5: Where did you receive your first nursing qualification (or, if a direct-entry midwife, your first midwifery qualification)?

	No.	%	No.	%	No.	%	No.	%	
	Working NSW		Not working NSW		Work Status Not Reported		Total		Percentage Working NSW
Australia	35950	84.0%	12143	84.9%	1985	76.3%	50078	83.9%	74.8%
Overseas	6850	16.0%	2152	15.1%	616	23.7%	9618	16.1%	76.1%
Total	42800	100.0%	14295	100.0%	2601	100.0%	59696	100.0%	75.0%
<i>Non-Response</i>	5599	11.6%	1664	10.4%	2672	50.7%	9935	14.3%	

Table C.6: If Australia - Which State?

	No.	%	No.	%	No.	%	No.	%	
	Working NSW		Not working NSW		Work Status Not Reported		Total		Percentage Working NSW
ACT	398	67.2%	169	28.5%	25	4.2%	592	100.0%	70.2%
NSW	31909	73.0%	10112	23.1%	1704	3.9%	43725	100.0%	75.9%
NT	41	73.2%	13	23.2%	2	3.6%	56	100.0%	75.9%
QLD	1020	63.3%	520	32.3%	72	4.5%	1612	100.0%	66.2%
SA	517	65.0%	242	30.4%	36	4.5%	795	100.0%	68.1%
TAS	203	67.0%	89	29.4%	11	3.6%	303	100.0%	69.5%
VIC	1644	62.1%	886	33.5%	116	4.4%	2646	100.0%	65.0%
WA	218	62.5%	112	32.1%	19	5.4%	349	100.0%	66.1%
Total	35950	71.8%	12143	24.2%	1985	4.0%	50078	100.0%	74.8%
<i>Not-Applicable/Specified</i>	12449	25.7%	3816	23.9%	3288	62.4%	19553	28.1%	

Table C.7: If Overseas - which country?

	No.	%	No.	%	No.	%	No.	%	
	Working NSW		Not working NSW		Work Status Not Reported		Total		Percentage Working NSW
Australia	35950	84.0%	12143	85.0%	1985	76.3%	50078	83.9%	74.8%
New Zealand	848	2.0%	304	2.1%	64	2.5%	1216	2.0%	73.6%
Other countries	0	0.0%	0	0.0%	0	0.0%	0	0.0%	0.0%
Oceania	107	0.3%	20	0.1%	23	0.9%	150	0.3%	84.3%
UK/Ireland	2882	6.7%	843	5.9%	187	7.2%	3912	6.6%	77.4%
Other Europe	446	1.0%	112	0.8%	28	1.1%	586	1.0%	79.9%
North America	173	0.4%	113	0.8%	16	0.6%	302	0.5%	60.5%
Central/South America	43	0.1%	8	0.1%	3	0.1%	54	0.1%	84.3%
Asia	1811	4.2%	605	4.2%	244	9.4%	2660	4.5%	75.0%
Middle East	96	0.2%	16	0.1%	3	0.1%	115	0.2%	85.7%
South Africa	244	0.6%	78	0.5%	19	0.7%	341	0.6%	75.8%
Other Africa	190	0.4%	51	0.4%	29	1.1%	270	0.5%	78.8%
Total	42790	100.0%	14293	100.0%	2601	100.0%	59684	100.0%	75.0%
<i>Non-response:</i>	5609	11.6%	1666	10.4%	2672	50.7%	9947	14.3%	

Table C.8: In what year did you first become a registered &/or enrolled nurse, or a 'direct-entry' midwife? - Enrolled Nurse in Australia

Year of qualification	No.	%	No.	%	No.	%	No.	%	%
	Working NSW		Not working NSW		Work Status Not Reported		Total		Percentage Working NSW
prior to 1960	7	30.4%	11	47.8%	5	21.7%	23	100.0%	38.9%
1960	3	33.3%	4	44.4%	2	22.2%	9	100.0%	42.9%
1961	6	60.0%	1	10.0%	3	30.0%	10	100.0%	85.7%
1962	7	43.8%	5	31.3%	4	25.0%	16	100.0%	58.3%
1963	12	50.0%	10	41.7%	2	8.3%	24	100.0%	54.5%
1964	9	42.9%	8	38.1%	4	19.0%	21	100.0%	52.9%
1965	26	54.2%	17	35.4%	5	10.4%	48	100.0%	60.5%
1966	22	48.9%	19	42.2%	4	8.9%	45	100.0%	53.7%
1967	37	72.5%	9	17.6%	5	9.8%	51	100.0%	80.4%
1968	70	64.2%	24	22.0%	15	13.8%	109	100.0%	74.5%
1969	117	64.3%	43	23.6%	22	12.1%	182	100.0%	73.1%
1970	132	63.8%	56	27.1%	19	9.2%	207	100.0%	70.2%
1971	181	69.3%	60	23.0%	20	7.7%	261	100.0%	75.1%
1972	212	66.7%	76	23.9%	30	9.4%	318	100.0%	73.6%
1973	153	64.8%	67	28.4%	16	6.8%	236	100.0%	69.5%
1974	203	66.6%	79	25.9%	23	7.5%	305	100.0%	72.0%
1975	209	69.7%	72	24.0%	19	6.3%	300	100.0%	74.4%
1976	248	67.4%	90	24.5%	30	8.2%	368	100.0%	73.4%
1977	197	66.3%	80	26.9%	20	6.7%	297	100.0%	71.1%
1978	258	65.3%	108	27.3%	29	7.3%	395	100.0%	70.5%
1979	213	66.1%	91	28.3%	18	5.6%	322	100.0%	70.1%
1980	200	63.9%	93	29.7%	20	6.4%	313	100.0%	68.3%
1981	177	59.4%	103	34.6%	18	6.0%	298	100.0%	63.2%
1982	205	63.9%	98	30.5%	18	5.6%	321	100.0%	67.7%
1983	149	65.1%	71	31.0%	9	3.9%	229	100.0%	67.7%
1984	183	70.4%	66	25.4%	11	4.2%	260	100.0%	73.5%
1985	200	65.8%	89	29.3%	15	4.9%	304	100.0%	69.2%
1986	270	66.0%	114	27.9%	25	6.1%	409	100.0%	70.3%
1987	304	65.2%	137	29.4%	25	5.4%	466	100.0%	68.9%
1988	237	66.4%	98	27.5%	22	6.2%	357	100.0%	70.7%
1989	194	66.2%	90	30.7%	9	3.1%	293	100.0%	68.3%
1990	195	65.9%	92	31.1%	9	3.0%	296	100.0%	67.9%
1991	234	71.6%	81	24.8%	12	3.7%	327	100.0%	74.3%
1992	183	69.1%	75	28.3%	7	2.6%	265	100.0%	70.9%
1993	164	70.4%	60	25.8%	9	3.9%	233	100.0%	73.2%
1994	185	74.9%	51	20.6%	11	4.5%	247	100.0%	78.4%
1995	188	72.9%	59	22.9%	11	4.3%	258	100.0%	76.1%
1996	188	74.0%	52	20.5%	14	5.5%	254	100.0%	78.3%
1997	206	76.0%	57	21.0%	8	3.0%	271	100.0%	78.3%
1998	178	71.8%	59	23.8%	11	4.4%	248	100.0%	75.1%
1999	222	80.7%	49	17.8%	4	1.5%	275	100.0%	81.9%
2000	221	73.9%	59	19.7%	19	6.4%	299	100.0%	78.9%
2001	287	80.2%	52	14.5%	19	5.3%	358	100.0%	84.7%
2002	244	80.5%	44	14.5%	15	5.0%	303	100.0%	84.7%
2003	297	84.9%	43	12.3%	10	2.9%	350	100.0%	87.4%
2004	404	88.2%	31	6.8%	23	5.0%	458	100.0%	92.9%
2005	6	100.0%	0	0.0%	0	0.0%	6	100.0%	100.0%
Total	7843	69.7%	2753	24.5%	649	5.8%	11245	100.0%	74.0%
<i>Unknown</i>	40556	83.8%	13206	82.7%	4624	87.7%	58386	83.9%	

Table C.9: In what year did you first become a registered &/or enrolled nurse, or a 'direct-entry' midwife? - Registered Nurse in Australia

Year of qualification	No.	%	No.	%	No.	%	No.	%	%
	Working NSW		Not working NSW		Work Status Not Reported		Total		Percentage Working NSW
prior to 1960	174	36.4%	237	49.6%	67	14.0%	478	100.0%	42.3%
1960	69	44.2%	76	48.7%	11	7.1%	156	100.0%	47.6%
1961	123	51.5%	93	38.9%	23	9.6%	239	100.0%	56.9%
1962	126	49.6%	117	46.1%	11	4.3%	254	100.0%	51.9%
1963	171	51.7%	128	38.7%	32	9.7%	331	100.0%	57.2%
1964	251	53.9%	180	38.6%	35	7.5%	466	100.0%	58.2%
1965	217	59.1%	125	34.1%	25	6.8%	367	100.0%	63.5%
1966	303	59.8%	181	35.7%	23	4.5%	507	100.0%	62.6%
1967	343	62.6%	182	33.2%	23	4.2%	548	100.0%	65.3%
1968	451	63.2%	228	31.9%	35	4.9%	714	100.0%	66.4%
1969	619	65.4%	279	29.5%	49	5.2%	947	100.0%	68.9%
1970	642	68.3%	254	27.0%	44	4.7%	940	100.0%	71.7%
1971	668	70.0%	243	25.5%	43	4.5%	954	100.0%	73.3%
1972	730	72.1%	239	23.6%	43	4.2%	1012	100.0%	75.3%
1973	686	74.6%	196	21.3%	37	4.0%	919	100.0%	77.8%
1974	774	72.1%	242	22.5%	58	5.4%	1074	100.0%	76.2%
1975	933	74.8%	276	22.1%	39	3.1%	1248	100.0%	77.2%
1976	958	73.5%	299	22.9%	46	3.5%	1303	100.0%	76.2%
1977	861	74.0%	260	22.3%	43	3.7%	1164	100.0%	76.8%
1978	1061	74.4%	315	22.1%	51	3.6%	1427	100.0%	77.1%
1979	1098	71.8%	373	24.4%	59	3.9%	1530	100.0%	74.6%
1980	1166	74.0%	358	22.7%	51	3.2%	1575	100.0%	76.5%
1981	1089	74.2%	323	22.0%	56	3.8%	1468	100.0%	77.1%
1982	870	70.9%	316	25.8%	41	3.3%	1227	100.0%	73.4%
1983	858	74.0%	266	22.9%	36	3.1%	1160	100.0%	76.3%
1984	924	74.1%	285	22.9%	38	3.0%	1247	100.0%	76.4%
1985	778	73.0%	258	24.2%	30	2.8%	1066	100.0%	75.1%
1986	918	71.8%	314	24.6%	47	3.7%	1279	100.0%	74.5%
1987	1038	72.9%	332	23.3%	54	3.8%	1424	100.0%	75.8%
1988	781	71.8%	264	24.3%	42	3.9%	1087	100.0%	74.7%
1989	823	73.9%	260	23.3%	31	2.8%	1114	100.0%	76.0%
1990	857	73.4%	266	22.8%	44	3.8%	1167	100.0%	76.3%
1991	976	75.6%	270	20.9%	45	3.5%	1291	100.0%	78.3%
1992	830	74.7%	240	21.6%	41	3.7%	1111	100.0%	77.6%
1993	805	76.7%	207	19.7%	38	3.6%	1050	100.0%	79.5%
1994	736	75.4%	208	21.3%	32	3.3%	976	100.0%	78.0%
1995	721	77.5%	176	18.9%	33	3.5%	930	100.0%	80.4%
1996	595	76.0%	154	19.7%	34	4.3%	783	100.0%	79.4%
1997	660	80.1%	134	16.3%	30	3.6%	824	100.0%	83.1%
1998	705	79.5%	160	18.0%	22	2.5%	887	100.0%	81.5%
1999	698	79.6%	148	16.9%	31	3.5%	877	100.0%	82.5%
2000	828	80.4%	169	16.4%	33	3.2%	1030	100.0%	83.0%
2001	886	80.7%	178	16.2%	34	3.1%	1098	100.0%	83.3%
2002	827	82.0%	139	13.8%	43	4.3%	1009	100.0%	85.6%
2003	964	82.0%	168	14.3%	44	3.7%	1176	100.0%	85.2%
2004	1144	85.6%	159	11.9%	34	2.5%	1337	100.0%	87.8%
2005	79	76.0%	17	16.3%	8	7.7%	104	100.0%	82.3%
Total	32814	73.1%	10292	22.9%	1769	3.9%	44875	100.0%	76.1%
<i>Unknown</i>	15585	32.2%	5667	35.5%	3504	66.5%	24756	35.6%	

Table C.10: In what year did you first become a registered &/or enrolled nurse, or a 'direct-entry' midwife? - Registered Midwife in Australia

Year of qualification	No.	%	No.	%	No.	%	No.	%	%
	Working NSW		Not working NSW		Work Status Not Reported		Total		Percentage Working NSW
prior to 1960	20	32.8%	27	44.3%	14	23.0%	61	100.0%	42.6%
1960	7	46.7%	7	46.7%	1	6.7%	15	100.0%	50.0%
1961	10	50.0%	8	40.0%	2	10.0%	20	100.0%	55.6%
1962	14	46.7%	14	46.7%	2	6.7%	30	100.0%	50.0%
1963	19	43.2%	21	47.7%	4	9.1%	44	100.0%	47.5%
1964	19	51.4%	15	40.5%	3	8.1%	37	100.0%	55.9%
1965	36	67.9%	15	28.3%	2	3.8%	53	100.0%	70.6%
1966	25	47.2%	21	39.6%	7	13.2%	53	100.0%	54.3%
1967	29	67.4%	11	25.6%	3	7.0%	43	100.0%	72.5%
1968	36	52.9%	29	42.6%	3	4.4%	68	100.0%	55.4%
1969	38	61.3%	19	30.6%	5	8.1%	62	100.0%	66.7%
1970	50	64.9%	24	31.2%	3	3.9%	77	100.0%	67.6%
1971	43	57.3%	27	36.0%	5	6.7%	75	100.0%	61.4%
1972	51	61.4%	25	30.1%	7	8.4%	83	100.0%	67.1%
1973	57	64.0%	26	29.2%	6	6.7%	89	100.0%	68.7%
1974	60	69.0%	21	24.1%	6	6.9%	87	100.0%	74.1%
1975	66	68.8%	24	25.0%	6	6.3%	96	100.0%	73.3%
1976	56	70.0%	20	25.0%	4	5.0%	80	100.0%	73.7%
1977	65	68.4%	26	27.4%	4	4.2%	95	100.0%	71.4%
1978	59	75.6%	15	19.2%	4	5.1%	78	100.0%	79.7%
1979	65	73.9%	22	25.0%	1	1.1%	88	100.0%	74.7%
1980	43	74.1%	14	24.1%	1	1.7%	58	100.0%	75.4%
1981	67	77.0%	19	21.8%	1	1.1%	87	100.0%	77.9%
1982	37	64.9%	19	33.3%	1	1.8%	57	100.0%	66.1%
1983	42	71.2%	15	25.4%	2	3.4%	59	100.0%	73.7%
1984	40	70.2%	14	24.6%	3	5.3%	57	100.0%	74.1%
1985	35	68.6%	12	23.5%	4	7.8%	51	100.0%	74.5%
1986	31	70.5%	10	22.7%	3	6.8%	44	100.0%	75.6%
1987	40	72.7%	13	23.6%	2	3.6%	55	100.0%	75.5%
1988	25	69.4%	9	25.0%	2	5.6%	36	100.0%	73.5%
1989	31	70.5%	10	22.7%	3	6.8%	44	100.0%	75.6%
1990	41	77.4%	9	17.0%	3	5.7%	53	100.0%	82.0%
1991	30	68.2%	10	22.7%	4	9.1%	44	100.0%	75.0%
1992	40	76.9%	10	19.2%	2	3.8%	52	100.0%	80.0%
1993	15	68.2%	4	18.2%	3	13.6%	22	100.0%	78.9%
1994	17	77.3%	5	22.7%	0	0.0%	22	100.0%	77.3%
1995	17	73.9%	5	21.7%	1	4.3%	23	100.0%	77.3%
1996	17	89.5%	2	10.5%	0	0.0%	19	100.0%	89.5%
1997	15	83.3%	3	16.7%	0	0.0%	18	100.0%	83.3%
1998	13	81.3%	2	12.5%	1	6.3%	16	100.0%	86.7%
1999	9	52.9%	8	47.1%	0	0.0%	17	100.0%	52.9%
2000	16	88.9%	1	5.6%	1	5.6%	18	100.0%	94.1%
2001	29	87.9%	4	12.1%	0	0.0%	33	100.0%	87.9%
2002	12	66.7%	6	33.3%	0	0.0%	18	100.0%	66.7%
2003	25	80.6%	5	16.1%	1	3.2%	31	100.0%	83.3%
2004	14	58.3%	8	33.3%	2	8.3%	24	100.0%	63.6%
2005	4	100.0%	0	0.0%	0	0.0%	4	100.0%	100.0%
Total	1530	66.6%	634	27.6%	132	5.7%	2296	100.0%	70.7%
<i>Unknown</i>	46869	96.8%	15325	96.0%	5141	97.5%	67335	96.7%	

Table C.11: In what year did you first become a registered &/or enrolled nurse, or a 'direct-entry' midwife? - Registered Enrolled Nurse in NSW

Year of qualification	No.	%	No.	%	No.	%	No.	%	%
	Working NSW		Not working NSW		Work Status Not Reported		Total		Percentage Working NSW
prior to 1960	11	34.4%	16	50.0%	5	15.6%	32	100.0%	40.7%
1960	5	38.5%	6	46.2%	2	15.4%	13	100.0%	45.5%
1961	4	66.7%	1	16.7%	1	16.7%	6	100.0%	80.0%
1962	5	45.5%	4	36.4%	2	18.2%	11	100.0%	55.6%
1963	8	38.1%	11	52.4%	2	9.5%	21	100.0%	42.1%
1964	9	45.0%	9	45.0%	2	10.0%	20	100.0%	50.0%
1965	21	61.8%	12	35.3%	1	2.9%	34	100.0%	63.6%
1966	20	60.6%	12	36.4%	1	3.0%	33	100.0%	62.5%
1967	40	80.0%	7	14.0%	3	6.0%	50	100.0%	85.1%
1968	70	63.1%	30	27.0%	11	9.9%	111	100.0%	70.0%
1969	104	65.0%	37	23.1%	19	11.9%	160	100.0%	73.8%
1970	130	69.1%	41	21.8%	17	9.0%	188	100.0%	76.0%
1971	160	66.9%	63	26.4%	16	6.7%	239	100.0%	71.7%
1972	209	69.2%	68	22.5%	25	8.3%	302	100.0%	75.5%
1973	149	68.3%	60	27.5%	9	4.1%	218	100.0%	71.3%
1974	192	69.1%	71	25.5%	15	5.4%	278	100.0%	73.0%
1975	219	70.4%	74	23.8%	18	5.8%	311	100.0%	74.7%
1976	250	70.2%	81	22.8%	25	7.0%	356	100.0%	75.5%
1977	200	68.0%	73	24.8%	21	7.1%	294	100.0%	73.3%
1978	232	65.0%	96	26.9%	29	8.1%	357	100.0%	70.7%
1979	218	67.7%	86	26.7%	18	5.6%	322	100.0%	71.7%
1980	221	68.8%	84	26.2%	16	5.0%	321	100.0%	72.5%
1981	181	60.9%	98	33.0%	18	6.1%	297	100.0%	64.9%
1982	188	66.2%	84	29.6%	12	4.2%	284	100.0%	69.1%
1983	155	66.5%	69	29.6%	9	3.9%	233	100.0%	69.2%
1984	192	69.8%	72	26.2%	11	4.0%	275	100.0%	72.7%
1985	195	68.7%	76	26.8%	13	4.6%	284	100.0%	72.0%
1986	271	66.6%	116	28.5%	20	4.9%	407	100.0%	70.0%
1987	293	69.8%	108	25.7%	19	4.5%	420	100.0%	73.1%
1988	219	65.2%	93	27.7%	24	7.1%	336	100.0%	70.2%
1989	178	65.4%	87	32.0%	7	2.6%	272	100.0%	67.2%
1990	208	72.7%	76	26.6%	2	0.7%	286	100.0%	73.2%
1991	239	69.9%	91	26.6%	12	3.5%	342	100.0%	72.4%
1992	193	73.1%	66	25.0%	5	1.9%	264	100.0%	74.5%
1993	172	68.5%	71	28.3%	8	3.2%	251	100.0%	70.8%
1994	204	75.0%	60	22.1%	8	2.9%	272	100.0%	77.3%
1995	203	76.3%	54	20.3%	9	3.4%	266	100.0%	79.0%
1996	208	77.6%	52	19.4%	8	3.0%	268	100.0%	80.0%
1997	193	75.7%	49	19.2%	13	5.1%	255	100.0%	79.8%
1998	187	73.9%	53	20.9%	13	5.1%	253	100.0%	77.9%
1999	220	80.3%	48	17.5%	6	2.2%	274	100.0%	82.1%
2000	228	72.8%	64	20.4%	21	6.7%	313	100.0%	78.1%
2001	295	78.2%	59	15.6%	23	6.1%	377	100.0%	83.3%
2002	264	82.0%	43	13.4%	15	4.7%	322	100.0%	86.0%
2003	336	81.4%	63	15.3%	14	3.4%	413	100.0%	84.2%
2004	448	84.5%	58	10.9%	24	4.5%	530	100.0%	88.5%
2005	9	90.0%	1	10.0%	0	0.0%	10	100.0%	90.0%
Total	7956	71.2%	2653	23.7%	572	5.1%	11181	100.0%	75.0%
<i>Unknown</i>	40443	83.6%	13306	83.4%	4701	89.2%	58450	83.9%	

Table C.12: In what year did you first become a registered &/or enrolled nurse, or a 'direct-entry' midwife? - Registered Nurse in NSW

Year of qualification	No.	%	No.	%	No.	%	No.	%	%
	Working NSW		Not working NSW		Work Status Not Reported		Total		Percentage Working NSW
prior to 1960	145	36.0%	214	53.1%	44	10.9%	403	100.0%	40.4%
1960	64	47.8%	61	45.5%	9	6.7%	134	100.0%	51.2%
1961	79	44.6%	82	46.3%	16	9.0%	177	100.0%	49.1%
1962	104	48.1%	103	47.7%	9	4.2%	216	100.0%	50.2%
1963	127	47.4%	112	41.8%	29	10.8%	268	100.0%	53.1%
1964	204	57.0%	128	35.8%	26	7.3%	358	100.0%	61.4%
1965	175	54.7%	123	38.4%	22	6.9%	320	100.0%	58.7%
1966	252	57.5%	163	37.2%	23	5.3%	438	100.0%	60.7%
1967	295	60.7%	168	34.6%	23	4.7%	486	100.0%	63.7%
1968	441	65.9%	197	29.4%	31	4.6%	669	100.0%	69.1%
1969	573	67.3%	248	29.1%	31	3.6%	852	100.0%	69.8%
1970	594	67.9%	245	28.0%	36	4.1%	875	100.0%	70.8%
1971	640	70.4%	226	24.9%	43	4.7%	909	100.0%	73.9%
1972	699	72.1%	229	23.6%	42	4.3%	970	100.0%	75.3%
1973	607	74.2%	177	21.6%	34	4.2%	818	100.0%	77.4%
1974	743	72.6%	229	22.4%	52	5.1%	1024	100.0%	76.4%
1975	870	74.5%	262	22.4%	36	3.1%	1168	100.0%	76.9%
1976	929	74.4%	273	21.9%	47	3.8%	1249	100.0%	77.3%
1977	815	75.4%	228	21.1%	38	3.5%	1081	100.0%	78.1%
1978	1045	75.1%	302	21.7%	45	3.2%	1392	100.0%	77.6%
1979	1067	72.1%	359	24.3%	53	3.6%	1479	100.0%	74.8%
1980	1176	75.7%	329	21.2%	48	3.1%	1553	100.0%	78.1%
1981	1104	74.0%	334	22.4%	53	3.6%	1491	100.0%	76.8%
1982	869	71.5%	308	25.3%	38	3.1%	1215	100.0%	73.8%
1983	837	73.9%	262	23.1%	33	2.9%	1132	100.0%	76.2%
1984	887	74.4%	275	23.1%	30	2.5%	1192	100.0%	76.3%
1985	749	73.1%	243	23.7%	32	3.1%	1024	100.0%	75.5%
1986	884	72.6%	288	23.6%	46	3.8%	1218	100.0%	75.4%
1987	1003	71.8%	342	24.5%	52	3.7%	1397	100.0%	74.6%
1988	771	71.9%	259	24.1%	43	4.0%	1073	100.0%	74.9%
1989	762	72.2%	258	24.5%	35	3.3%	1055	100.0%	74.7%
1990	839	73.0%	259	22.5%	52	4.5%	1150	100.0%	76.4%
1991	939	73.6%	283	22.2%	54	4.2%	1276	100.0%	76.8%
1992	743	72.3%	235	22.9%	50	4.9%	1028	100.0%	76.0%
1993	743	76.6%	195	20.1%	32	3.3%	970	100.0%	79.2%
1994	732	76.3%	196	20.4%	31	3.2%	959	100.0%	78.9%
1995	683	74.7%	189	20.7%	42	4.6%	914	100.0%	78.3%
1996	633	74.7%	177	20.9%	37	4.4%	847	100.0%	78.1%
1997	668	80.3%	139	16.7%	25	3.0%	832	100.0%	82.8%
1998	702	77.8%	173	19.2%	27	3.0%	902	100.0%	80.2%
1999	696	76.8%	174	19.2%	36	4.0%	906	100.0%	80.0%
2000	862	79.3%	194	17.8%	31	2.9%	1087	100.0%	81.6%
2001	971	79.2%	211	17.2%	44	3.6%	1226	100.0%	82.1%
2002	894	79.0%	194	17.2%	43	3.8%	1131	100.0%	82.2%
2003	1102	78.5%	248	17.7%	53	3.8%	1403	100.0%	81.6%
2004	1320	80.3%	273	16.6%	51	3.1%	1644	100.0%	82.9%
2005	95	72.5%	27	20.6%	9	6.9%	131	100.0%	77.9%
Total	32132	73.0%	10194	23.1%	1716	3.9%	44042	100.0%	75.9%
<i>Unknown</i>	16267	33.6%	5765	36.1%	3557	67.5%	25589	36.7%	

Table C.13: In what year did you first become a registered &/or enrolled nurse, or a 'direct-entry' midwife? - Registered Midwife in NSW

Year of qualification	No.	%	No.	%	No.	%	No.	%	%
	Working NSW		Not working NSW		Work Status Not Reported		Total		Percentage Working NSW
prior to 1960	14	35.0%	22	55.0%	4	10.0%	40	100.0%	38.9%
1960	7	53.8%	6	46.2%	0	0.0%	13	100.0%	53.8%
1961	6	35.3%	9	52.9%	2	11.8%	17	100.0%	40.0%
1962	10	41.7%	10	41.7%	4	16.7%	24	100.0%	50.0%
1963	12	35.3%	18	52.9%	4	11.8%	34	100.0%	40.0%
1964	16	47.1%	12	35.3%	6	17.6%	34	100.0%	57.1%
1965	29	64.4%	12	26.7%	4	8.9%	45	100.0%	70.7%
1966	16	45.7%	15	42.9%	4	11.4%	35	100.0%	51.6%
1967	21	60.0%	14	40.0%	0	0.0%	35	100.0%	60.0%
1968	26	51.0%	22	43.1%	3	5.9%	51	100.0%	54.2%
1969	31	60.8%	20	39.2%	0	0.0%	51	100.0%	60.8%
1970	34	54.8%	26	41.9%	2	3.2%	62	100.0%	56.7%
1971	41	57.7%	25	35.2%	5	7.0%	71	100.0%	62.1%
1972	48	71.6%	15	22.4%	4	6.0%	67	100.0%	76.2%
1973	29	58.0%	16	32.0%	5	10.0%	50	100.0%	64.4%
1974	60	78.9%	15	19.7%	1	1.3%	76	100.0%	80.0%
1975	47	72.3%	15	23.1%	3	4.6%	65	100.0%	75.8%
1976	57	67.9%	23	27.4%	4	4.8%	84	100.0%	71.3%
1977	48	67.6%	20	28.2%	3	4.2%	71	100.0%	70.6%
1978	42	73.7%	12	21.1%	3	5.3%	57	100.0%	77.8%
1979	36	61.0%	18	30.5%	5	8.5%	59	100.0%	66.7%
1980	32	80.0%	8	20.0%	0	0.0%	40	100.0%	80.0%
1981	33	60.0%	20	36.4%	2	3.6%	55	100.0%	62.3%
1982	24	60.0%	16	40.0%	0	0.0%	40	100.0%	60.0%
1983	31	81.6%	7	18.4%	0	0.0%	38	100.0%	81.6%
1984	23	74.2%	8	25.8%	0	0.0%	31	100.0%	74.2%
1985	20	58.8%	10	29.4%	4	11.8%	34	100.0%	66.7%
1986	17	68.0%	3	12.0%	5	20.0%	25	100.0%	85.0%
1987	22	59.5%	15	40.5%	0	0.0%	37	100.0%	59.5%
1988	20	69.0%	6	20.7%	3	10.3%	29	100.0%	76.9%
1989	12	46.2%	11	42.3%	3	11.5%	26	100.0%	52.2%
1990	21	70.0%	7	23.3%	2	6.7%	30	100.0%	75.0%
1991	13	59.1%	6	27.3%	3	13.6%	22	100.0%	68.4%
1992	15	71.4%	5	23.8%	1	4.8%	21	100.0%	75.0%
1993	7	77.8%	1	11.1%	1	11.1%	9	100.0%	87.5%
1994	8	88.9%	1	11.1%	0	0.0%	9	100.0%	88.9%
1995	7	63.6%	4	36.4%	0	0.0%	11	100.0%	63.6%
1996	9	81.8%	1	9.1%	1	9.1%	11	100.0%	90.0%
1997	12	100.0%	0	0.0%	0	0.0%	12	100.0%	100.0%
1998	8	66.7%	3	25.0%	1	8.3%	12	100.0%	72.7%
1999	5	71.4%	2	28.6%	0	0.0%	7	100.0%	71.4%
2000	8	80.0%	2	20.0%	0	0.0%	10	100.0%	80.0%
2001	14	77.8%	4	22.2%	0	0.0%	18	100.0%	77.8%
2002	5	41.7%	6	50.0%	1	8.3%	12	100.0%	45.5%
2003	10	76.9%	2	15.4%	1	7.7%	13	100.0%	83.3%
2004	11	61.1%	5	27.8%	2	11.1%	18	100.0%	68.8%
2005	4	100.0%	0	0.0%	0	0.0%	4	100.0%	100.0%
Total	1021	63.2%	498	30.8%	96	5.9%	1615	100.0%	67.2%
<i>Unknown</i>	<i>47378</i>	<i>97.9%</i>	<i>15461</i>	<i>96.9%</i>	<i>5177</i>	<i>98.2%</i>	<i>68016</i>	<i>97.7%</i>	

Table C.14: For how many years since you first registered/enrolled have you worked as a nurse or midwife?

Years	No.	%	No.	%	No.	%	No.	%	No.	%
	Working NSW		Not working NSW		Work Status Not Reported		Total		Cumulative Total	
1	1466	3.1%	462	3.1%	48	1.7%	1976	3.1%	1976	3.06%
2	1223	2.6%	476	3.2%	63	2.2%	1762	2.7%	3738	5.79%
3	1163	2.4%	533	3.6%	65	2.3%	1761	2.7%	5499	8.52%
4	1274	2.7%	533	3.6%	67	2.3%	1874	2.9%	7373	11.43%
5	1421	3.0%	680	4.6%	84	2.9%	2185	3.4%	9558	14.82%
6	1146	2.4%	532	3.6%	72	2.5%	1750	2.7%	11308	17.53%
7	1158	2.4%	462	3.1%	67	2.3%	1687	2.6%	12995	20.15%
8	1290	2.7%	562	3.8%	85	2.9%	1937	3.0%	14932	23.15%
9	1047	2.2%	366	2.5%	57	2.0%	1470	2.3%	16402	25.43%
10	1907	4.0%	1028	6.9%	150	5.2%	3085	4.8%	19487	30.21%
11	1030	2.1%	324	2.2%	58	2.0%	1412	2.2%	20899	32.40%
12	1330	2.8%	503	3.4%	73	2.5%	1906	3.0%	22805	35.35%
13	1136	2.4%	346	2.3%	58	2.0%	1540	2.4%	24345	37.74%
14	1406	2.9%	394	2.6%	67	2.3%	1867	2.9%	26212	40.63%
15	1896	4.0%	710	4.8%	122	4.2%	2728	4.2%	28940	44.86%
16	1140	2.4%	357	2.4%	51	1.8%	1548	2.4%	30488	47.26%
17	1156	2.4%	309	2.1%	68	2.4%	1533	2.4%	32021	49.64%
18	1496	3.1%	371	2.5%	90	3.1%	1957	3.0%	33978	52.67%
19	1118	2.3%	249	1.7%	68	2.4%	1435	2.2%	35413	54.90%
20	2669	5.6%	893	6.0%	193	6.7%	3755	5.8%	39168	60.72%
21	1116	2.3%	236	1.6%	71	2.5%	1423	2.2%	40591	62.93%
22	1308	2.7%	305	2.0%	66	2.3%	1679	2.6%	42270	65.53%
23	1305	2.7%	271	1.8%	69	2.4%	1645	2.6%	43915	68.08%
24	1370	2.9%	280	1.9%	67	2.3%	1717	2.7%	45632	70.74%
25	2258	4.7%	575	3.9%	146	5.1%	2979	4.6%	48611	75.36%
26	1137	2.4%	223	1.5%	62	2.1%	1422	2.2%	50033	77.56%
27	1159	2.4%	203	1.4%	54	1.9%	1416	2.2%	51449	79.76%
28	1059	2.2%	225	1.5%	61	2.1%	1345	2.1%	52794	81.84%
29	873	1.8%	138	0.9%	55	1.9%	1066	1.7%	53860	83.50%
30	2259	4.7%	641	4.3%	184	6.4%	3084	4.8%	56944	88.28%
31	621	1.3%	137	0.9%	44	1.5%	802	1.2%	57746	89.52%
32	727	1.5%	187	1.3%	41	1.4%	955	1.5%	58701	91.00%
33	645	1.3%	148	1.0%	43	1.5%	836	1.3%	59537	92.30%
34	610	1.3%	158	1.1%	41	1.4%	809	1.3%	60346	93.55%
35	779	1.6%	259	1.7%	57	2.0%	1095	1.7%	61441	95.25%
36	390	0.8%	105	0.7%	40	1.4%	535	0.8%	61976	96.08%
37	293	0.6%	67	0.5%	16	0.6%	376	0.6%	62352	96.66%
38	262	0.5%	95	0.6%	20	0.7%	377	0.6%	62729	97.25%
39	179	0.4%	64	0.4%	12	0.4%	255	0.4%	62984	97.64%
40	413	0.9%	223	1.5%	56	1.9%	692	1.1%	63676	98.71%
41	94	0.2%	39	0.3%	7	0.2%	140	0.2%	63816	98.93%
42	92	0.2%	51	0.3%	15	0.5%	158	0.2%	63974	99.18%
43	66	0.1%	37	0.2%	7	0.2%	110	0.2%	64084	99.35%
44	63	0.1%	17	0.1%	10	0.3%	90	0.1%	64174	99.49%
45	72	0.2%	29	0.2%	10	0.3%	111	0.2%	64285	99.66%
46	24	0.1%	16	0.1%	2	0.1%	42	0.1%	64327	99.72%
47-50	58	0.1%	43	0.3%	20	0.7%	121	0.2%	64448	99.91%
> 50	33	0.1%	20	0.1%	5	0.2%	58	0.1%	64506	100.00%
Total	47929	100.0%	14882	100.0%	2887	100.0%	64506	100.0%	64506	100.00%
<i>Non-Response</i>	1192	2.49%	778	4.97%	1785	38.21%	3755	5.50%		

Table C.15: Year of Birth, Enrolled Nurses and Registered Nurses, NSW, 2005

	No.	%	No.	%	No.	%	No.	%	
	Working NSW		Not working NSW		Work Status Not Reported		Total		Percentage Working NSW
Prior to 1940 / Unknown	3211	6.6%	1732	10.9%	691	13.1%	5634	8.1%	65.0%
1940	221	0.5%	179	1.1%	45	0.9%	445	0.6%	55.3%
1941	279	0.6%	204	1.3%	58	1.1%	541	0.8%	57.8%
1942	346	0.7%	228	1.4%	60	1.1%	634	0.9%	60.3%
1943	455	0.9%	255	1.6%	78	1.5%	788	1.1%	64.1%
1944	492	1.0%	253	1.6%	79	1.5%	824	1.2%	66.0%
1945	602	1.2%	324	2.0%	95	1.8%	1021	1.5%	65.0%
1946	794	1.6%	322	2.0%	103	2.0%	1219	1.8%	71.1%
1947	942	1.9%	353	2.2%	100	1.9%	1395	2.0%	72.7%
1948	996	2.1%	338	2.1%	103	2.0%	1437	2.1%	74.7%
1949	1069	2.2%	382	2.4%	141	2.7%	1592	2.3%	73.7%
1940-1949	6196	12.8%	2838	17.8%	862	16.3%	9896	14.2%	68.6%
1950	1149	2.4%	344	2.2%	138	2.6%	1631	2.3%	77.0%
1951	1272	2.6%	367	2.3%	116	2.2%	1755	2.5%	77.6%
1952	1394	2.9%	429	2.7%	123	2.3%	1946	2.8%	76.5%
1953	1548	3.2%	472	3.0%	160	3.0%	2180	3.1%	76.6%
1954	1661	3.4%	479	3.0%	164	3.1%	2304	3.3%	77.6%
1955	1701	3.5%	494	3.1%	168	3.2%	2363	3.4%	77.5%
1956	1827	3.8%	579	3.6%	192	3.6%	2598	3.7%	75.9%
1957	1938	4.0%	578	3.6%	221	4.2%	2737	3.9%	77.0%
1958	2109	4.4%	635	4.0%	199	3.8%	2943	4.2%	76.9%
1959	2046	4.2%	593	3.7%	191	3.6%	2830	4.1%	77.5%
1950-1959	16645	34.4%	4970	31.1%	1672	31.7%	23287	33.4%	77.0%
1960	1715	3.5%	547	3.4%	161	3.1%	2423	3.5%	75.8%
1961	1670	3.5%	579	3.6%	174	3.3%	2423	3.5%	74.3%
1962	1506	3.1%	539	3.4%	176	3.3%	2221	3.2%	73.6%
1963	1340	2.8%	473	3.0%	158	3.0%	1971	2.8%	73.9%
1964	1233	2.5%	462	2.9%	135	2.6%	1830	2.6%	72.7%
1965	1097	2.3%	403	2.5%	107	2.0%	1607	2.3%	73.1%
1966	1078	2.2%	318	2.0%	87	1.6%	1483	2.1%	77.2%
1967	979	2.0%	323	2.0%	92	1.7%	1394	2.0%	75.2%
1968	1082	2.2%	312	2.0%	103	2.0%	1497	2.1%	77.6%
1969	1089	2.3%	307	1.9%	111	2.1%	1507	2.2%	78.0%
1960-1969	12789	26.4%	4263	26.7%	1304	24.7%	18356	26.4%	75.0%
1970	1046	2.2%	283	1.8%	90	1.7%	1419	2.0%	78.7%
1971	1049	2.2%	265	1.7%	90	1.7%	1404	2.0%	79.8%
1972	1052	2.2%	264	1.7%	85	1.6%	1401	2.0%	79.9%
1973	914	1.9%	250	1.6%	88	1.7%	1252	1.8%	78.5%
1974	855	1.8%	226	1.4%	67	1.3%	1148	1.6%	79.1%
1975	749	1.5%	138	0.9%	69	1.3%	956	1.4%	84.4%
1976	656	1.4%	160	1.0%	47	0.9%	863	1.2%	80.4%
1977	565	1.2%	115	0.7%	40	0.8%	720	1.0%	83.1%
1978	560	1.2%	118	0.7%	51	1.0%	729	1.0%	82.6%
1979	478	1.0%	78	0.5%	35	0.7%	591	0.8%	86.0%
1970-1979	7924	16.4%	1897	11.9%	662	12.6%	10483	15.1%	80.7%
1980	464	1.0%	102	0.6%	27	0.5%	593	0.9%	82.0%
1981	463	1.0%	77	0.5%	25	0.5%	565	0.8%	85.7%
1982	388	0.8%	48	0.3%	15	0.3%	451	0.6%	89.0%
1983	211	0.4%	26	0.2%	9	0.2%	246	0.4%	89.0%
1984	95	0.2%	4	0.0%	6	0.1%	105	0.2%	96.0%
1985	13	0.0%	2	0.0%	0	0.0%	15	0.0%	0.0%
1980-1985	1634	3.4%	259	1.6%	82	1.6%	1975	2.8%	86.3%
Total	48399	100.0%	15959	100.0%	5273	100.0%	69631	100.0%	75.2%

Table C.16: Sex of Respondents, Enrolled Nurses and Registered Nurses, NSW, 2005

	No.	%	No.	%	No.	%	No.	%	
	Working NSW		Not working NSW		Work Status Not Reported		Total		Percentage Working NSW
Female	43865	92.0%	14515	92.2%	4642	89.6%	63022	91.9%	75.1%
Male	3831	8.0%	1223	7.8%	536	10.4%	5590	8.1%	75.8%
Total	47696	100.0%	15738	100.0%	5178	100.0%	68612	100.0%	75.2%
<i>Non-Response</i>	703	1.5%	221	1.4%	95	1.8%	1019	1.5%	

Table C.17: Indigenous Status, Enrolled Nurses and Registered Nurses, NSW, 2005

	No.	%	No.	%	No.	%	No.	%	
	Working NSW		Not working NSW		Work Status Not Reported		Total		Percentage Working NSW
No	47419	99.4%	15598	99.3%	3069	99.1%	66086	99.4%	75.2%
Aboriginal	260	0.5%	98	0.6%	24	0.8%	382	0.6%	72.6%
TSI	14	0.0%	3	0.0%	4	0.1%	21	0.0%	82.4%
Both	2	0.0%	4	0.0%	1	0.0%	7	0.0%	33.3%
Total	47695	100.0%	15703	100.0%	3098	100.0%	66496	100.0%	75.2%
<i>Non-Response</i>	704	1.5%	256	1.6%	2175	41.2%	3135	4.5%	

Table C.18: Citizenship Status, Enrolled Nurses and Registered Nurses, NSW, 2005

	No.	%	No.	%	No.	%	No.	%	
	Working NSW		Not working NSW		Work Status Not Reported		Total		Percentage Working NSW
Yes	44153	92.4%	14513	93.2%	2718	89.9%	61384	92.4%	75.3%
Permanent resident	3072	6.4%	767	4.9%	210	6.9%	4049	6.1%	80.0%
Temporary resident	569	1.2%	299	1.9%	96	3.2%	964	1.5%	65.6%
Total	47794	100.0%	15579	100.0%	3024	100.0%	66397	100.0%	75.4%
<i>Non-Response</i>	605	1.3%	380	2.4%	2249	42.7%	3234	4.6%	

Table C.19: Area of Residence, Enrolled Nurses and Registered Nurses, NSW, 2005

	No.	%	No.	%	No.	%	No.	%	
	Working NSW		Not working NSW		Work Status Not Reported		Total		Percentage Working NSW
Greater Southern AHS	3454	7.4%	1324	10.9%	236	8.8%	5014	8.1%	72.3%
Greater Western AHS	2666	5.7%	797	6.6%	159	5.9%	3622	5.9%	77.0%
Hunter & New England AHS	7227	15.4%	2004	16.5%	443	16.4%	9674	15.6%	78.3%
North Coast AHS	3703	7.9%	1172	9.7%	234	8.7%	5109	8.3%	76.0%
Northern Sydney & Central Coast AHS	8379	17.8%	2483	20.5%	485	18.0%	11347	18.4%	77.1%
South Eastern Sydney & Illawarra AHS	7727	16.4%	1638	13.5%	434	16.1%	9799	15.8%	82.5%
Sydney South West AHS	6352	13.5%	1354	11.2%	305	11.3%	8011	13.0%	82.4%
Sydney West AHS	7484	15.9%	1366	11.3%	401	14.9%	9251	15.0%	84.6%
Total	46992	100.0%	12138	100.0%	2697	100.0%	61827	100.0%	79.5%
<i>Non-Response</i>	1407	2.9%	3821	23.9%	2576	48.9%	7804	11.2%	

CLASSIFICATION: Registered Nurses**Table C.20: Are you registered or enrolled as a nurse or midwife in more than one state or territory of Australia?**

	No.	%	No.	%	No.	%	No.	%	
	Working NSW		Not working NSW		Work Status Not Reported		Total		Percentage Working NSW
Yes	2968	7.3%	2831	21.7%	281	11.5%	6080	10.9%	51.2%
No	37491	92.7%	10189	78.3%	2160	88.5%	49840	89.1%	78.6%
Total	40459	100.0%	13020	100.0%	2441	100.0%	55920	100.0%	75.7%
<i>Non-Response</i>	1152	2.8%	372	2.8%	1779	42.2%	3303	5.6%	

Table C.21: States of Registration

	No.	%	No.	%	No.	%	No.	%	
	Working NSW		Not working NSW		Work Status Not Reported		Total		Percentage Working NSW
NSW	3274	59.2%	1914	34.6%	338	6.1%	5526	100.0%	63.1%
Vic.	494	37.3%	784	59.2%	47	3.5%	1325	100.0%	38.7%
Qld	633	34.4%	1121	61.0%	84	4.6%	1838	100.0%	36.1%
SA	89	35.2%	148	58.5%	16	6.3%	253	100.0%	37.6%
WA	157	36.6%	253	59.0%	19	4.4%	429	100.0%	38.3%
Tas.	47	29.9%	103	65.6%	7	4.5%	157	100.0%	31.3%
NT	157	43.6%	193	53.6%	10	2.8%	360	100.0%	44.9%
ACT	303	38.2%	459	57.9%	31	3.9%	793	100.0%	39.8%
Total (Other States)	1880	36.5%	3061	59.4%	214	4.2%	5155	100.0%	38.0%

Note: The question allows for multiple responses for other states of registration.

Table C.22: Category of Registration in NSW

	No.	%	No.	%	No.	%	No.	%	
	Working NSW		Not working NSW		Work Status Not Reported		Total		Percentage Working NSW
RN	40385	72.4%	12913	23.2%	2458	4.4%	55756	100.0%	75.8%
EN	937	68.3%	343	25.0%	91	6.6%	1371	100.0%	73.2%
Mothercraft nurse	397	64.7%	187	30.5%	30	4.9%	614	100.0%	68.0%
Direct entry midwife	518	58.7%	299	33.9%	65	7.4%	882	100.0%	63.4%
Total	42237	72.0%	13742	23.4%	2644	4.5%	58623	100.0%	75.5%

Table C.23: Authorised as:

	No.	%	No.	%	No.	%	No.	%	
	Working NSW		Not working NSW		Work Status Not Reported		Total		Percentage Working NSW
Authorised Midwife	10185	71.7%	3448	24.3%	574	4.0%	14207	100.0%	74.7%
Psychiatric/mental health nu	3870	72.5%	1211	22.7%	255	4.8%	5336	100.0%	76.2%
Nurse practitioner	2612	60.9%	1420	33.1%	254	5.9%	4286	100.0%	64.8%
Total	16667	69.9%	6079	25.5%	1083	4.5%	23829	100.0%	73.3%

Table C.24: Where did you receive your first nursing qualification (or, if a direct-entry midwife, your first midwifery qualification)?

	No.	%	No.	%	No.	%	No.	%	
	Working NSW		Not working NSW		Work Status Not Reported		Total		Percentage Working NSW
Australia	30625	82.5%	10124	83.3%	1573	73.3%	42322	82.3%	75.2%
Overseas	6502	17.5%	2025	16.7%	573	26.7%	9100	17.7%	76.3%
Total	37127	100.0%	12149	100.0%	2146	100.0%	51422	100.0%	75.3%
<i>Non-Response</i>	4484	10.8%	1243	9.3%	2074	49.1%	7801	13.2%	

Table C.25: If Australia - Which State?

	No.	%	No.	%	No.	%	No.	%	
	Working NSW		Not working NSW		Work Status Not Reported		Total		Percentage Working NSW
ACT	327	68.4%	135	1.3%	16	1.0%	478	1.1%	70.8%
NSW	27143	73.5%	8410	83.1%	1353	86.0%	36906	87.2%	76.3%
NT	31	72.1%	10	0.1%	2	0.1%	43	0.1%	75.6%
QLD	957	64.0%	473	4.7%	66	4.2%	1496	3.5%	66.9%
SA	464	65.7%	211	2.1%	31	2.0%	706	1.7%	68.7%
TAS	192	67.6%	81	0.8%	11	0.7%	284	0.7%	70.3%
VIC	1309	62.6%	704	7.0%	78	5.0%	2091	4.9%	65.0%
WA	202	63.5%	100	1.0%	16	1.0%	318	0.8%	66.9%
Total	30625	72.4%	10124	100.0%	1573	100.0%	42322	100.0%	75.2%
<i>Not-Applicable/Specified</i>	10986	26.4%	3268	24.4%	2647	62.7%	16901	28.5%	

Table C.26: If Overseas - which country?

	No.	%	No.	%	No.	%	No.	%	
	Working NSW		Not working NSW		Work Status Not Reported		Total		Percentage Working NSW
Australia	30625	82.5%	10124	83.3%	1573	73.3%	42322	82.3%	75.2%
New Zealand	734	2.0%	263	2.2%	49	2.3%	1046	2.0%	73.6%
Other countries	0	0.0%	0	0.0%	0	0.0%	0	0.0%	0.0%
Oceania	99	0.3%	18	0.1%	17	0.8%	134	0.3%	84.6%
UK/Ireland	2760	7.4%	793	6.5%	181	8.4%	3734	7.3%	77.7%
Other Europe	410	1.1%	105	0.9%	22	1.0%	537	1.0%	79.6%
North America	166	0.4%	107	0.9%	16	0.7%	289	0.6%	60.8%
Central/South America	28	0.1%	7	0.1%	3	0.1%	38	0.1%	80.0%
Asia	1774	4.8%	588	4.8%	238	11.1%	2600	5.1%	75.1%
Middle East	92	0.2%	15	0.1%	3	0.1%	110	0.2%	86.0%
South Africa	242	0.7%	77	0.6%	16	0.7%	335	0.7%	75.9%
Other Africa	188	0.5%	50	0.4%	28	1.3%	266	0.5%	79.0%
Total	37118	100.0%	12147	100.0%	2146	100.0%	51411	100.0%	75.3%
<i>Non-response:</i>	4493	10.8%	1245	9.3%	2074	49.1%	7812	13.2%	
<i>Non-Response</i>									

Table C.27: In what year did you first become a registered &/or enrolled nurse, or a 'direct-entry' midwife? - Enrolled Nurse in Australia

Year of qualification	No.	%	No.	%	No.	%	No.	%	%
	Working NSW		Not working NSW		Work Status Not Reported		Total		Percentage Working NSW
prior to 1960	2	20.0%	5	50.0%	3	30.0%	10	100.0%	28.6%
1960	1	33.3%	1	33.3%	1	33.3%	3	100.0%	50.0%
1961	2	66.7%	1	33.3%	0	0.0%	3	100.0%	66.7%
1962	2	33.3%	3	50.0%	1	16.7%	6	100.0%	40.0%
1963	3	42.9%	4	57.1%	0	0.0%	7	100.0%	42.9%
1964	2	40.0%	3	60.0%	0	0.0%	5	100.0%	40.0%
1965	3	42.9%	4	57.1%	0	0.0%	7	100.0%	42.9%
1966	7	53.8%	5	38.5%	1	7.7%	13	100.0%	58.3%
1967	11	84.6%	1	7.7%	1	7.7%	13	100.0%	91.7%
1968	9	64.3%	3	21.4%	2	14.3%	14	100.0%	75.0%
1969	23	67.6%	10	29.4%	1	2.9%	34	100.0%	69.7%
1970	32	59.3%	16	29.6%	6	11.1%	54	100.0%	66.7%
1971	50	71.4%	17	24.3%	3	4.3%	70	100.0%	74.6%
1972	45	62.5%	20	27.8%	7	9.7%	72	100.0%	69.2%
1973	41	74.5%	11	20.0%	3	5.5%	55	100.0%	78.8%
1974	61	72.6%	19	22.6%	4	4.8%	84	100.0%	76.3%
1975	67	81.7%	14	17.1%	1	1.2%	82	100.0%	82.7%
1976	78	73.6%	21	19.8%	7	6.6%	106	100.0%	78.8%
1977	53	70.7%	15	20.0%	7	9.3%	75	100.0%	77.9%
1978	65	72.2%	18	20.0%	7	7.8%	90	100.0%	78.3%
1979	54	59.3%	32	35.2%	5	5.5%	91	100.0%	62.8%
1980	63	65.6%	29	30.2%	4	4.2%	96	100.0%	68.5%
1981	62	69.7%	26	29.2%	1	1.1%	89	100.0%	70.5%
1982	63	71.6%	22	25.0%	3	3.4%	88	100.0%	74.1%
1983	46	76.7%	13	21.7%	1	1.7%	60	100.0%	78.0%
1984	50	69.4%	20	27.8%	2	2.8%	72	100.0%	71.4%
1985	66	74.2%	18	20.2%	5	5.6%	89	100.0%	78.6%
1986	95	75.4%	28	22.2%	3	2.4%	126	100.0%	77.2%
1987	92	69.2%	33	24.8%	8	6.0%	133	100.0%	73.6%
1988	79	71.8%	29	26.4%	2	1.8%	110	100.0%	73.1%
1989	69	75.8%	20	22.0%	2	2.2%	91	100.0%	77.5%
1990	68	70.8%	24	25.0%	4	4.2%	96	100.0%	73.9%
1991	76	80.9%	16	17.0%	2	2.1%	94	100.0%	82.6%
1992	66	81.5%	14	17.3%	1	1.2%	81	100.0%	82.5%
1993	52	80.0%	11	16.9%	2	3.1%	65	100.0%	82.5%
1994	70	79.5%	17	19.3%	1	1.1%	88	100.0%	80.5%
1995	77	85.6%	12	13.3%	1	1.1%	90	100.0%	86.5%
1996	49	81.7%	8	13.3%	3	5.0%	60	100.0%	86.0%
1997	57	81.4%	12	17.1%	1	1.4%	70	100.0%	82.6%
1998	51	78.5%	13	20.0%	1	1.5%	65	100.0%	79.7%
1999	48	81.4%	10	16.9%	1	1.7%	59	100.0%	82.8%
2000	48	81.4%	9	15.3%	2	3.4%	59	100.0%	84.2%
2001	52	83.9%	5	8.1%	5	8.1%	62	100.0%	91.2%
2002	28	82.4%	6	17.6%	0	0.0%	34	100.0%	82.4%
2003	32	88.9%	3	8.3%	1	2.8%	36	100.0%	91.4%
2004	36	83.7%	4	9.3%	3	7.0%	43	100.0%	90.0%
2005	2	100.0%	0	0.0%	0	0.0%	2	100.0%	100.0%
Total	2108	73.9%	625	21.9%	119	4.2%	2852	100.0%	77.1%
<i>Unknown</i>	39503	94.9%	12767	95.3%	4101	97.2%	56371	95.2%	

Table C.28: In what year did you first become a registered &/or enrolled nurse, or a 'direct-entry' midwife? - Registered Nurse in Australia

Year of qualification	No.	%	No.	%	No.	%	No.	%	%
	Working NSW		Not working NSW		Work Status Not Reported		Total		Percentage Working NSW
prior to 1960	174	36.4%	237	49.6%	67	14.0%	478	100.0%	42.3%
1960	69	44.5%	75	48.4%	11	7.1%	155	100.0%	47.9%
1961	123	51.5%	93	38.9%	23	9.6%	239	100.0%	56.9%
1962	126	49.6%	117	46.1%	11	4.3%	254	100.0%	51.9%
1963	171	51.7%	128	38.7%	32	9.7%	331	100.0%	57.2%
1964	251	53.9%	180	38.6%	35	7.5%	466	100.0%	58.2%
1965	217	59.1%	125	34.1%	25	6.8%	367	100.0%	63.5%
1966	303	59.8%	181	35.7%	23	4.5%	507	100.0%	62.6%
1967	343	62.6%	182	33.2%	23	4.2%	548	100.0%	65.3%
1968	451	63.4%	227	31.9%	33	4.6%	711	100.0%	66.5%
1969	619	65.4%	279	29.5%	49	5.2%	947	100.0%	68.9%
1970	642	68.3%	254	27.0%	44	4.7%	940	100.0%	71.7%
1971	668	70.1%	243	25.5%	42	4.4%	953	100.0%	73.3%
1972	730	72.1%	239	23.6%	43	4.2%	1012	100.0%	75.3%
1973	685	74.6%	196	21.4%	37	4.0%	918	100.0%	77.8%
1974	774	72.1%	242	22.5%	58	5.4%	1074	100.0%	76.2%
1975	933	74.9%	274	22.0%	38	3.1%	1245	100.0%	77.3%
1976	957	73.5%	299	23.0%	46	3.5%	1302	100.0%	76.2%
1977	861	74.0%	259	22.3%	43	3.7%	1163	100.0%	76.9%
1978	1061	74.4%	314	22.0%	51	3.6%	1426	100.0%	77.2%
1979	1097	71.8%	372	24.3%	59	3.9%	1528	100.0%	74.7%
1980	1164	74.0%	358	22.8%	51	3.2%	1573	100.0%	76.5%
1981	1089	74.2%	323	22.0%	56	3.8%	1468	100.0%	77.1%
1982	870	70.9%	316	25.8%	41	3.3%	1227	100.0%	73.4%
1983	858	74.0%	266	22.9%	36	3.1%	1160	100.0%	76.3%
1984	924	74.2%	284	22.8%	38	3.0%	1246	100.0%	76.5%
1985	778	73.1%	257	24.1%	30	2.8%	1065	100.0%	75.2%
1986	917	71.8%	314	24.6%	47	3.7%	1278	100.0%	74.5%
1987	1038	72.9%	331	23.3%	54	3.8%	1423	100.0%	75.8%
1988	779	71.8%	264	24.3%	42	3.9%	1085	100.0%	74.7%
1989	823	73.9%	259	23.3%	31	2.8%	1113	100.0%	76.1%
1990	856	73.4%	266	22.8%	44	3.8%	1166	100.0%	76.3%
1991	976	75.6%	270	20.9%	45	3.5%	1291	100.0%	78.3%
1992	828	74.7%	240	21.6%	41	3.7%	1109	100.0%	77.5%
1993	802	76.7%	206	19.7%	38	3.6%	1046	100.0%	79.6%
1994	734	75.4%	208	21.4%	32	3.3%	974	100.0%	77.9%
1995	721	77.5%	176	18.9%	33	3.5%	930	100.0%	80.4%
1996	594	76.0%	154	19.7%	34	4.3%	782	100.0%	79.4%
1997	659	80.1%	134	16.3%	30	3.6%	823	100.0%	83.1%
1998	701	79.5%	159	18.0%	22	2.5%	882	100.0%	81.5%
1999	698	79.7%	148	16.9%	30	3.4%	876	100.0%	82.5%
2000	824	80.3%	169	16.5%	33	3.2%	1026	100.0%	83.0%
2001	878	80.7%	176	16.2%	34	3.1%	1088	100.0%	83.3%
2002	823	82.0%	139	13.8%	42	4.2%	1004	100.0%	85.6%
2003	957	82.2%	163	14.0%	44	3.8%	1164	100.0%	85.4%
2004	1128	85.6%	156	11.8%	33	2.5%	1317	100.0%	87.9%
2005	70	75.3%	17	18.3%	6	6.5%	93	100.0%	80.5%
Total	32744	73.1%	10269	22.9%	1760	3.9%	44773	100.0%	76.1%
<i>Unknown</i>	8867	21.3%	3123	23.3%	2460	58.3%	14450	24.4%	

Table C.29: In what year did you first become a registered &/or enrolled nurse, or a 'direct-entry' midwife? - Registered Midwife in Australia

Year of qualification	No.	%	No.	%	No.	%	No.	%	%
	Working NSW		Not working NSW		Work Status Not Reported		Total		Percentage Working NSW
prior to 1960	20	33.3%	26	43.3%	14	23.3%	60	100.0%	43.5%
1960	7	46.7%	7	46.7%	1	6.7%	15	100.0%	50.0%
1961	10	52.6%	7	36.8%	2	10.5%	19	100.0%	58.8%
1962	14	46.7%	14	46.7%	2	6.7%	30	100.0%	50.0%
1963	19	43.2%	21	47.7%	4	9.1%	44	100.0%	47.5%
1964	19	51.4%	15	40.5%	3	8.1%	37	100.0%	55.9%
1965	36	67.9%	15	28.3%	2	3.8%	53	100.0%	70.6%
1966	25	47.2%	21	39.6%	7	13.2%	53	100.0%	54.3%
1967	29	67.4%	11	25.6%	3	7.0%	43	100.0%	72.5%
1968	36	52.9%	29	42.6%	3	4.4%	68	100.0%	55.4%
1969	38	61.3%	19	30.6%	5	8.1%	62	100.0%	66.7%
1970	50	64.9%	24	31.2%	3	3.9%	77	100.0%	67.6%
1971	43	57.3%	27	36.0%	5	6.7%	75	100.0%	61.4%
1972	51	61.4%	25	30.1%	7	8.4%	83	100.0%	67.1%
1973	57	64.0%	26	29.2%	6	6.7%	89	100.0%	68.7%
1974	60	69.0%	21	24.1%	6	6.9%	87	100.0%	74.1%
1975	66	68.8%	24	25.0%	6	6.3%	96	100.0%	73.3%
1976	56	70.0%	20	25.0%	4	5.0%	80	100.0%	73.7%
1977	65	68.4%	26	27.4%	4	4.2%	95	100.0%	71.4%
1978	59	75.6%	15	19.2%	4	5.1%	78	100.0%	79.7%
1979	65	73.9%	22	25.0%	1	1.1%	88	100.0%	74.7%
1980	43	74.1%	14	24.1%	1	1.7%	58	100.0%	75.4%
1981	67	77.0%	19	21.8%	1	1.1%	87	100.0%	77.9%
1982	37	64.9%	19	33.3%	1	1.8%	57	100.0%	66.1%
1983	42	71.2%	15	25.4%	2	3.4%	59	100.0%	73.7%
1984	40	70.2%	14	24.6%	3	5.3%	57	100.0%	74.1%
1985	35	68.6%	12	23.5%	4	7.8%	51	100.0%	74.5%
1986	31	70.5%	10	22.7%	3	6.8%	44	100.0%	75.6%
1987	40	72.7%	13	23.6%	2	3.6%	55	100.0%	75.5%
1988	25	69.4%	9	25.0%	2	5.6%	36	100.0%	73.5%
1989	31	70.5%	10	22.7%	3	6.8%	44	100.0%	75.6%
1990	41	77.4%	9	17.0%	3	5.7%	53	100.0%	82.0%
1991	30	68.2%	10	22.7%	4	9.1%	44	100.0%	75.0%
1992	40	76.9%	10	19.2%	2	3.8%	52	100.0%	80.0%
1993	15	68.2%	4	18.2%	3	13.6%	22	100.0%	78.9%
1994	17	77.3%	5	22.7%	0	0.0%	22	100.0%	77.3%
1995	17	77.3%	4	18.2%	1	4.5%	22	100.0%	81.0%
1996	17	89.5%	2	10.5%	0	0.0%	19	100.0%	89.5%
1997	15	83.3%	3	16.7%	0	0.0%	18	100.0%	83.3%
1998	13	81.3%	2	12.5%	1	6.3%	16	100.0%	86.7%
1999	9	52.9%	8	47.1%	0	0.0%	17	100.0%	52.9%
2000	16	88.9%	1	5.6%	1	5.6%	18	100.0%	94.1%
2001	29	87.9%	4	12.1%	0	0.0%	33	100.0%	87.9%
2002	12	66.7%	6	33.3%	0	0.0%	18	100.0%	66.7%
2003	25	80.6%	5	16.1%	1	3.2%	31	100.0%	83.3%
2004	13	56.5%	8	34.8%	2	8.7%	23	100.0%	61.9%
2005	3	100.0%	0	0.0%	0	0.0%	3	100.0%	100.0%
Total	1528	66.7%	631	27.5%	132	5.8%	2291	100.0%	70.8%
<i>Unknown</i>	<i>40083</i>	<i>96.3%</i>	<i>12761</i>	<i>95.3%</i>	<i>4088</i>	<i>96.9%</i>	<i>56932</i>	<i>96.1%</i>	

Table C.30: In what year did you first become a registered &/or enrolled nurse, or a 'direct-entry' midwife? - Registered Enrolled Nurse in NSW

Year of qualification	No.	%	No.	%	No.	%	No.	%	%
	Working NSW		Not working NSW		Work Status Not Reported		Total		Percentage Working NSW
prior to 1960	5	27.8%	9	50.0%	4	22.2%	18	100.0%	35.7%
1960	2	33.3%	3	50.0%	1	16.7%	6	100.0%	40.0%
1961	3	75.0%	1	25.0%	0	0.0%	4	100.0%	75.0%
1962	2	40.0%	2	40.0%	1	20.0%	5	100.0%	50.0%
1963	6	40.0%	8	53.3%	1	6.7%	15	100.0%	42.9%
1964	4	33.3%	7	58.3%	1	8.3%	12	100.0%	36.4%
1965	9	69.2%	4	30.8%	0	0.0%	13	100.0%	69.2%
1966	8	66.7%	4	33.3%	0	0.0%	12	100.0%	66.7%
1967	21	87.5%	2	8.3%	1	4.2%	24	100.0%	91.3%
1968	18	60.0%	9	30.0%	3	10.0%	30	100.0%	66.7%
1969	29	65.9%	13	29.5%	2	4.5%	44	100.0%	69.0%
1970	43	72.9%	12	20.3%	4	6.8%	59	100.0%	78.2%
1971	48	68.6%	20	28.6%	2	2.9%	70	100.0%	70.6%
1972	57	62.0%	25	27.2%	10	10.9%	92	100.0%	69.5%
1973	42	73.7%	12	21.1%	3	5.3%	57	100.0%	77.8%
1974	59	67.8%	24	27.6%	4	4.6%	87	100.0%	71.1%
1975	81	76.4%	22	20.8%	3	2.8%	106	100.0%	78.6%
1976	86	75.4%	21	18.4%	7	6.1%	114	100.0%	80.4%
1977	71	72.4%	18	18.4%	9	9.2%	98	100.0%	79.8%
1978	85	69.7%	27	22.1%	10	8.2%	122	100.0%	75.9%
1979	71	65.1%	30	27.5%	8	7.3%	109	100.0%	70.3%
1980	84	75.7%	23	20.7%	4	3.6%	111	100.0%	78.5%
1981	80	67.8%	35	29.7%	3	2.5%	118	100.0%	69.6%
1982	79	77.5%	20	19.6%	3	2.9%	102	100.0%	79.8%
1983	62	78.5%	16	20.3%	1	1.3%	79	100.0%	79.5%
1984	72	72.0%	26	26.0%	2	2.0%	100	100.0%	73.5%
1985	73	76.8%	18	18.9%	4	4.2%	95	100.0%	80.2%
1986	112	75.2%	33	22.1%	4	2.7%	149	100.0%	77.2%
1987	104	78.8%	22	16.7%	6	4.5%	132	100.0%	82.5%
1988	88	78.6%	20	17.9%	4	3.6%	112	100.0%	81.5%
1989	62	75.6%	20	24.4%	0	0.0%	82	100.0%	75.6%
1990	84	84.8%	15	15.2%	0	0.0%	99	100.0%	84.8%
1991	78	77.2%	20	19.8%	3	3.0%	101	100.0%	79.6%
1992	79	86.8%	11	12.1%	1	1.1%	91	100.0%	87.8%
1993	63	72.4%	21	24.1%	3	3.4%	87	100.0%	75.0%
1994	94	79.0%	23	19.3%	2	1.7%	119	100.0%	80.3%
1995	84	88.4%	9	9.5%	2	2.1%	95	100.0%	90.3%
1996	70	81.4%	13	15.1%	3	3.5%	86	100.0%	84.3%
1997	67	84.8%	10	12.7%	2	2.5%	79	100.0%	87.0%
1998	52	76.5%	14	20.6%	2	2.9%	68	100.0%	78.8%
1999	60	80.0%	14	18.7%	1	1.3%	75	100.0%	81.1%
2000	64	80.0%	11	13.8%	5	6.3%	80	100.0%	85.3%
2001	69	78.4%	13	14.8%	6	6.8%	88	100.0%	84.1%
2002	48	78.7%	10	16.4%	3	4.9%	61	100.0%	82.8%
2003	56	81.2%	11	15.9%	2	2.9%	69	100.0%	83.6%
2004	55	72.4%	17	22.4%	4	5.3%	76	100.0%	76.4%
2005	3	100.0%	0	0.0%	0	0.0%	3	100.0%	100.0%
Total	2592	75.0%	718	20.8%	144	4.2%	3454	100.0%	78.3%
<i>Unknown</i>	39019	93.8%	12674	94.6%	4076	96.6%	55769	94.2%	

Table C.31: In what year did you first become a registered &/or enrolled nurse, or a 'direct-entry' midwife? - Registered Nurse in NSW

Year of qualification	No.	%	No.	%	No.	%	No.	%	%
	Working NSW		Not working NSW		Work Status Not Reported		Total		Percentage Working NSW
prior to 1960	145	36.0%	214	53.1%	44	10.9%	403	100.0%	40.4%
1960	64	48.1%	60	45.1%	9	6.8%	133	100.0%	51.6%
1961	79	44.6%	82	46.3%	16	9.0%	177	100.0%	49.1%
1962	104	48.1%	103	47.7%	9	4.2%	216	100.0%	50.2%
1963	127	47.4%	112	41.8%	29	10.8%	268	100.0%	53.1%
1964	204	57.0%	128	35.8%	26	7.3%	358	100.0%	61.4%
1965	175	54.7%	123	38.4%	22	6.9%	320	100.0%	58.7%
1966	252	57.5%	163	37.2%	23	5.3%	438	100.0%	60.7%
1967	295	60.7%	168	34.6%	23	4.7%	486	100.0%	63.7%
1968	441	65.9%	197	29.4%	31	4.6%	669	100.0%	69.1%
1969	573	67.3%	248	29.1%	31	3.6%	852	100.0%	69.8%
1970	594	67.9%	245	28.0%	36	4.1%	875	100.0%	70.8%
1971	640	70.4%	226	24.9%	43	4.7%	909	100.0%	73.9%
1972	699	72.1%	229	23.6%	42	4.3%	970	100.0%	75.3%
1973	606	74.2%	177	21.7%	34	4.2%	817	100.0%	77.4%
1974	743	72.6%	229	22.4%	52	5.1%	1024	100.0%	76.4%
1975	870	74.5%	262	22.4%	36	3.1%	1168	100.0%	76.9%
1976	929	74.5%	272	21.8%	46	3.7%	1247	100.0%	77.4%
1977	815	75.4%	228	21.1%	38	3.5%	1081	100.0%	78.1%
1978	1045	75.1%	302	21.7%	45	3.2%	1392	100.0%	77.6%
1979	1067	72.1%	359	24.3%	53	3.6%	1479	100.0%	74.8%
1980	1176	75.7%	329	21.2%	48	3.1%	1553	100.0%	78.1%
1981	1103	74.0%	334	22.4%	53	3.6%	1490	100.0%	76.8%
1982	869	71.5%	308	25.3%	38	3.1%	1215	100.0%	73.8%
1983	837	73.9%	262	23.1%	33	2.9%	1132	100.0%	76.2%
1984	885	74.4%	274	23.0%	30	2.5%	1189	100.0%	76.4%
1985	749	73.2%	242	23.7%	32	3.1%	1023	100.0%	75.6%
1986	884	72.6%	288	23.6%	46	3.8%	1218	100.0%	75.4%
1987	1003	71.9%	340	24.4%	52	3.7%	1395	100.0%	74.7%
1988	769	71.8%	259	24.2%	43	4.0%	1071	100.0%	74.8%
1989	762	72.2%	258	24.5%	35	3.3%	1055	100.0%	74.7%
1990	838	73.0%	258	22.5%	52	4.5%	1148	100.0%	76.5%
1991	939	73.6%	283	22.2%	54	4.2%	1276	100.0%	76.8%
1992	741	72.2%	235	22.9%	50	4.9%	1026	100.0%	75.9%
1993	741	76.6%	194	20.1%	32	3.3%	967	100.0%	79.3%
1994	729	76.3%	196	20.5%	31	3.2%	956	100.0%	78.8%
1995	683	74.8%	188	20.6%	42	4.6%	913	100.0%	78.4%
1996	632	74.7%	177	20.9%	37	4.4%	846	100.0%	78.1%
1997	667	80.3%	139	16.7%	25	3.0%	831	100.0%	82.8%
1998	698	77.8%	172	19.2%	27	3.0%	897	100.0%	80.2%
1999	696	76.8%	174	19.2%	36	4.0%	906	100.0%	80.0%
2000	859	79.3%	193	17.8%	31	2.9%	1083	100.0%	81.7%
2001	965	79.4%	207	17.0%	44	3.6%	1216	100.0%	82.3%
2002	892	79.1%	194	17.2%	42	3.7%	1128	100.0%	82.1%
2003	1097	78.7%	244	17.5%	53	3.8%	1394	100.0%	81.8%
2004	1303	80.2%	272	16.7%	50	3.1%	1625	100.0%	82.7%
2005	90	72.0%	27	21.6%	8	6.4%	125	100.0%	76.9%
Total	32074	73.0%	10174	23.1%	1712	3.9%	43960	100.0%	75.9%
<i>Unknown</i>	9537	22.9%	3218	24.0%	2508	59.4%	15263	25.8%	

Table C.32: In what year did you first become a registered &/or enrolled nurse, or a 'direct-entry' midwife? - Registered Midwife in NSW

Year of qualification	No.	%	No.	%	No.	%	No.	%	%
	Working NSW		Not working NSW		Work Status Not Reported		Total		Percentage Working NSW
prior to 1960	14	35.0%	22	55.0%	4	10.0%	40	100.0%	38.9%
1960	7	53.8%	6	46.2%	0	0.0%	13	100.0%	53.8%
1961	6	37.5%	8	50.0%	2	12.5%	16	100.0%	42.9%
1962	10	41.7%	10	41.7%	4	16.7%	24	100.0%	50.0%
1963	12	35.3%	18	52.9%	4	11.8%	34	100.0%	40.0%
1964	16	47.1%	12	35.3%	6	17.6%	34	100.0%	57.1%
1965	29	64.4%	12	26.7%	4	8.9%	45	100.0%	70.7%
1966	16	45.7%	15	42.9%	4	11.4%	35	100.0%	51.6%
1967	21	60.0%	14	40.0%	0	0.0%	35	100.0%	60.0%
1968	26	51.0%	22	43.1%	3	5.9%	51	100.0%	54.2%
1969	31	60.8%	20	39.2%	0	0.0%	51	100.0%	60.8%
1970	34	54.8%	26	41.9%	2	3.2%	62	100.0%	56.7%
1971	41	57.7%	25	35.2%	5	7.0%	71	100.0%	62.1%
1972	48	71.6%	15	22.4%	4	6.0%	67	100.0%	76.2%
1973	29	58.0%	16	32.0%	5	10.0%	50	100.0%	64.4%
1974	60	78.9%	15	19.7%	1	1.3%	76	100.0%	80.0%
1975	47	72.3%	15	23.1%	3	4.6%	65	100.0%	75.8%
1976	57	67.9%	23	27.4%	4	4.8%	84	100.0%	71.3%
1977	48	67.6%	20	28.2%	3	4.2%	71	100.0%	70.6%
1978	41	73.2%	12	21.4%	3	5.4%	56	100.0%	77.4%
1979	36	61.0%	18	30.5%	5	8.5%	59	100.0%	66.7%
1980	32	80.0%	8	20.0%	0	0.0%	40	100.0%	80.0%
1981	33	60.0%	20	36.4%	2	3.6%	55	100.0%	62.3%
1982	24	60.0%	16	40.0%	0	0.0%	40	100.0%	60.0%
1983	31	81.6%	7	18.4%	0	0.0%	38	100.0%	81.6%
1984	23	74.2%	8	25.8%	0	0.0%	31	100.0%	74.2%
1985	20	58.8%	10	29.4%	4	11.8%	34	100.0%	66.7%
1986	17	68.0%	3	12.0%	5	20.0%	25	100.0%	85.0%
1987	22	59.5%	15	40.5%	0	0.0%	37	100.0%	59.5%
1988	20	69.0%	6	20.7%	3	10.3%	29	100.0%	76.9%
1989	12	46.2%	11	42.3%	3	11.5%	26	100.0%	52.2%
1990	21	70.0%	7	23.3%	2	6.7%	30	100.0%	75.0%
1991	13	59.1%	6	27.3%	3	13.6%	22	100.0%	68.4%
1992	15	71.4%	5	23.8%	1	4.8%	21	100.0%	75.0%
1993	7	77.8%	1	11.1%	1	11.1%	9	100.0%	87.5%
1994	8	88.9%	1	11.1%	0	0.0%	9	100.0%	88.9%
1995	7	70.0%	3	30.0%	0	0.0%	10	100.0%	70.0%
1996	9	81.8%	1	9.1%	1	9.1%	11	100.0%	90.0%
1997	12	100.0%	0	0.0%	0	0.0%	12	100.0%	100.0%
1998	8	66.7%	3	25.0%	1	8.3%	12	100.0%	72.7%
1999	5	71.4%	2	28.6%	0	0.0%	7	100.0%	71.4%
2000	8	80.0%	2	20.0%	0	0.0%	10	100.0%	80.0%
2001	14	77.8%	4	22.2%	0	0.0%	18	100.0%	77.8%
2002	5	41.7%	6	50.0%	1	8.3%	12	100.0%	45.5%
2003	10	76.9%	2	15.4%	1	7.7%	13	100.0%	83.3%
2004	10	58.8%	5	29.4%	2	11.8%	17	100.0%	66.7%
2005	3	100.0%	0	0.0%	0	0.0%	3	100.0%	100.0%
Total	1018	63.2%	496	30.8%	96	6.0%	1610	100.0%	67.2%
<i>Unknown</i>	40593	97.6%	12896	96.3%	4124	97.7%	57613	97.3%	

Table C.33: For how many years since you first registered/enrolled have you worked as a nurse or midwife?

Years	No.	%	No.	%	No.	%	No.	%	No.	%
	Working NSW		Not working NSW		Work Status Not Reported		Total		Cumulative Total	
1	1062	2.6%	347	2.8%	33	1.4%	1442	2.6%	1442	2.62%
2	912	2.3%	367	2.9%	49	2.1%	1328	2.4%	2770	5.03%
3	874	2.2%	416	3.3%	47	2.0%	1337	2.4%	4107	7.45%
4	1027	2.6%	418	3.3%	47	2.0%	1492	2.7%	5599	10.16%
5	1147	2.9%	516	4.1%	62	2.7%	1725	3.1%	7324	13.29%
6	943	2.3%	439	3.5%	57	2.5%	1439	2.6%	8763	15.90%
7	980	2.4%	374	3.0%	51	2.2%	1405	2.5%	10168	18.45%
8	1100	2.7%	473	3.8%	58	2.5%	1631	3.0%	11799	21.41%
9	887	2.2%	309	2.5%	45	2.0%	1241	2.3%	13040	23.67%
10	1631	4.1%	842	6.7%	119	5.2%	2592	4.7%	15632	28.37%
11	901	2.2%	279	2.2%	53	2.3%	1233	2.2%	16865	30.61%
12	1155	2.9%	421	3.4%	59	2.6%	1635	3.0%	18500	33.58%
13	980	2.4%	287	2.3%	49	2.1%	1316	2.4%	19816	35.96%
14	1220	3.0%	333	2.7%	54	2.3%	1607	2.9%	21423	38.88%
15	1619	4.0%	597	4.8%	98	4.3%	2314	4.2%	23737	43.08%
16	975	2.4%	305	2.4%	42	1.8%	1322	2.4%	25059	45.48%
17	986	2.5%	259	2.1%	50	2.2%	1295	2.4%	26354	47.83%
18	1274	3.2%	306	2.4%	76	3.3%	1656	3.0%	28010	50.84%
19	967	2.4%	208	1.7%	52	2.3%	1227	2.2%	29237	53.06%
20	2301	5.7%	743	5.9%	147	6.4%	3191	5.8%	32428	58.85%
21	1002	2.5%	210	1.7%	63	2.7%	1275	2.3%	33703	61.17%
22	1191	3.0%	259	2.1%	56	2.4%	1506	2.7%	35209	63.90%
23	1166	2.9%	234	1.9%	56	2.4%	1456	2.6%	36665	66.54%
24	1218	3.0%	240	1.9%	58	2.5%	1516	2.8%	38181	69.30%
25	1997	5.0%	497	4.0%	109	4.7%	2603	4.7%	40784	74.02%
26	1015	2.5%	194	1.5%	50	2.2%	1259	2.3%	42043	76.30%
27	1030	2.6%	187	1.5%	42	1.8%	1259	2.3%	43302	78.59%
28	948	2.4%	192	1.5%	51	2.2%	1191	2.2%	44493	80.75%
29	788	2.0%	124	1.0%	47	2.0%	959	1.7%	45452	82.49%
30	1983	4.9%	580	4.6%	147	6.4%	2710	4.9%	48162	87.41%
31	563	1.4%	126	1.0%	34	1.5%	723	1.3%	48885	88.72%
32	649	1.6%	162	1.3%	36	1.6%	847	1.5%	49732	90.26%
33	550	1.4%	136	1.1%	34	1.5%	720	1.3%	50452	91.57%
34	563	1.4%	149	1.2%	30	1.3%	742	1.3%	51194	92.91%
35	700	1.7%	248	2.0%	49	2.1%	997	1.8%	52191	94.72%
36	359	0.9%	99	0.8%	31	1.3%	489	0.9%	52680	95.61%
37	274	0.7%	64	0.5%	12	0.5%	350	0.6%	53030	96.24%
38	245	0.6%	94	0.7%	18	0.8%	357	0.6%	53387	96.89%
39	173	0.4%	62	0.5%	11	0.5%	246	0.4%	53633	97.34%
40	397	1.0%	220	1.8%	50	2.2%	667	1.2%	54300	98.55%
41	91	0.2%	39	0.3%	7	0.3%	137	0.2%	54437	98.80%
42	89	0.2%	48	0.4%	13	0.6%	150	0.3%	54587	99.07%
43	64	0.2%	35	0.3%	7	0.3%	106	0.2%	54693	99.26%
44	60	0.1%	17	0.1%	10	0.4%	87	0.2%	54780	99.42%
45	69	0.2%	27	0.2%	9	0.4%	105	0.2%	54885	99.61%
46	24	0.1%	16	0.1%	2	0.1%	42	0.1%	54927	99.69%
47-50	56	0.1%	43	0.3%	19	0.8%	118	0.2%	55045	99.90%
50+	31	0.1%	19	0.2%	4	0.2%	54	0.1%	55099	100.00%
Total	40236	100.0%	12560	100.0%	2303	100.0%	55099	100.0%	55099	100.00%
<i>Non-Response</i>	905	2.20%	533	4.07%	1316	36.36%	2754	4.76%		

Table C.34: Year of Birth, Registered Nurses, NSW, 2005

	No.	%	No.	%	No.	%	No.	%	
	Working NSW		Not working NSW		Work Status Not Reported		Total		Percentage Working NSW
Prior to 1940 /									
Unknown	2467	5.9%	1454	10.9%	496	11.8%	4417	7.5%	62.9%
1940	211	0.5%	172	1.3%	38	0.9%	421	0.7%	55.1%
1941	258	0.6%	191	1.4%	52	1.2%	501	0.8%	57.5%
1942	324	0.8%	215	1.6%	55	1.3%	594	1.0%	60.1%
1943	427	1.0%	242	1.8%	73	1.7%	742	1.3%	63.8%
1944	446	1.1%	244	1.8%	68	1.6%	758	1.3%	64.6%
1945	553	1.3%	295	2.2%	83	2.0%	931	1.6%	65.2%
1946	734	1.8%	299	2.2%	87	2.1%	1120	1.9%	71.1%
1947	846	2.0%	329	2.5%	83	2.0%	1258	2.1%	72.0%
1948	919	2.2%	307	2.3%	92	2.2%	1318	2.2%	75.0%
1949	972	2.3%	339	2.5%	114	2.7%	1425	2.4%	74.1%
1940-1949	5690	13.7%	2633	19.7%	745	17.7%	9068	15.3%	68.4%
1950	1032	2.5%	310	2.3%	108	2.6%	1450	2.4%	76.9%
1951	1144	2.7%	315	2.4%	92	2.2%	1551	2.6%	78.4%
1952	1246	3.0%	369	2.8%	101	2.4%	1716	2.9%	77.2%
1953	1398	3.4%	409	3.1%	134	3.2%	1941	3.3%	77.4%
1954	1446	3.5%	416	3.1%	129	3.1%	1991	3.4%	77.7%
1955	1491	3.6%	415	3.1%	134	3.2%	2040	3.4%	78.2%
1956	1546	3.7%	483	3.6%	135	3.2%	2164	3.7%	76.2%
1957	1656	4.0%	464	3.5%	169	4.0%	2289	3.9%	78.1%
1958	1792	4.3%	509	3.8%	160	3.8%	2461	4.2%	77.9%
1959	1734	4.2%	479	3.6%	152	3.6%	2365	4.0%	78.4%
1950-1959	14485	34.8%	4169	31.1%	1314	31.1%	19968	33.7%	77.7%
1960	1458	3.5%	428	3.2%	121	2.9%	2007	3.4%	77.3%
1961	1395	3.4%	458	3.4%	134	3.2%	1987	3.4%	75.3%
1962	1286	3.1%	427	3.2%	149	3.5%	1862	3.1%	75.1%
1963	1102	2.6%	377	2.8%	124	2.9%	1603	2.7%	74.5%
1964	1025	2.5%	351	2.6%	103	2.4%	1479	2.5%	74.5%
1965	905	2.2%	325	2.4%	85	2.0%	1315	2.2%	73.6%
1966	894	2.1%	240	1.8%	71	1.7%	1205	2.0%	78.8%
1967	799	1.9%	253	1.9%	74	1.8%	1126	1.9%	76.0%
1968	924	2.2%	251	1.9%	86	2.0%	1261	2.1%	78.6%
1969	942	2.3%	239	1.8%	94	2.2%	1275	2.2%	79.8%
1960-1969	10730	25.8%	3349	25.0%	1041	24.7%	15120	25.5%	76.2%
1970	901	2.2%	238	1.8%	73	1.7%	1212	2.0%	79.1%
1971	913	2.2%	210	1.6%	77	1.8%	1200	2.0%	81.3%
1972	929	2.2%	225	1.7%	74	1.8%	1228	2.1%	80.5%
1973	798	1.9%	215	1.6%	74	1.8%	1087	1.8%	78.8%
1974	753	1.8%	189	1.4%	53	1.3%	995	1.7%	79.9%
1975	642	1.5%	114	0.9%	61	1.4%	817	1.4%	84.9%
1976	576	1.4%	133	1.0%	43	1.0%	752	1.3%	81.2%
1977	491	1.2%	95	0.7%	35	0.8%	621	1.0%	83.8%
1978	487	1.2%	102	0.8%	44	1.0%	633	1.1%	82.7%
1979	420	1.0%	70	0.5%	29	0.7%	519	0.9%	85.7%
1970-1979	6910	16.6%	1591	11.9%	563	13.3%	9064	15.3%	81.3%
1980	409	1.0%	85	0.6%	21	0.5%	515	0.9%	82.8%
1981	401	1.0%	62	0.5%	22	0.5%	485	0.8%	86.6%
1982	309	0.7%	34	0.3%	13	0.3%	356	0.6%	90.1%
1983	163	0.4%	14	0.1%	3	0.1%	180	0.3%	92.1%
1984	47	0.1%	1	0.0%	2	0.0%	50	0.1%	97.9%
1985	0	0.0%	0	0.0%	0	0.0%	0	0.0%	0.0%
1980-1985	1329	3.2%	196	1.5%	61	1.4%	1586	2.7%	87.1%
Total	41611	100.0%	13392	100.0%	4220	100.0%	59223	100.0%	75.7%

Table C.35: Sex of Respondents, Registered Nurses, NSW, 2005

	No.	%	No.	%	No.	%	No.	%	
	Working NSW		Not working NSW		Work Status Not Reported		Total		Percentage Working NSW
Female	37619	92.0%	12120	92.0%	3677	89.1%	533416	99.1%	75.6%
Male	3292	8.0%	1051	8.0%	448	10.9%	4791	0.9%	75.8%
Total	40911	100.0%	13171	100.0%	4125	100.0%	538207	100.0%	75.6%
<i>Non-Response</i>	700	1.7%	221	1.7%	95	2.3%	1016	0.2%	

Table C.36: Indigenous Status, Registered Nurses, NSW, 2005

	No.	%	No.	%	No.	%	No.	%	
	Working NSW		Not working NSW		Work Status Not Reported		Total		Percentage Working NSW
No	40837	99.6%	13119	99.5%	2434	99.4%	56390	99.6%	75.7%
Aboriginal	150	0.4%	58	0.4%	10	0.4%	218	0.4%	72.1%
TSI	8	0.0%	3	0.0%	4	0.2%	15	0.0%	72.7%
Both	2	0.0%	2	0.0%	0	0.0%	4	0.0%	50.0%
Total	40997	100.0%	13182	100.0%	2448	100.0%	56627	100.0%	75.7%
<i>Non-Response</i>	614	1.5%	210	1.6%	1772	42.0%	2596	4.4%	

Table C.37: Citizenship Status, Registered Nurses, NSW, 2005

	No.	%	No.	%	No.	%	No.	%	
	Working NSW		Not working NSW		Work Status Not Reported		Total		Percentage Working NSW
Yes	37788	92.0%	12086	92.6%	2109	88.9%	51983	92.0%	75.8%
Permanent resident	2724	6.6%	670	5.1%	173	7.3%	3567	6.3%	80.3%
Temporary resident	561	1.4%	297	2.3%	89	3.8%	947	1.7%	65.4%
Total	41073	100.0%	13053	100.0%	2371	100.0%	56497	100.0%	75.9%
<i>Non-Response</i>	538	1.3%	339	2.5%	1849	43.8%	2726	4.6%	

Table C.38: Area of Residence, Registered Nurses, NSW, 2005

	No.	%	No.	%	No.	%	No.	%	
	Working NSW		Not working NSW		Work Status Not Reported		Total		Percentage Working NSW
Greater Southern AHS	2619	6.5%	963	9.7%	144	7.0%	3726	7.1%	73.1%
Greater Western AHS	2038	5.0%	576	5.8%	101	4.9%	2715	5.2%	78.0%
Hunter & New England AHS	5923	14.7%	1544	15.5%	322	15.6%	7789	14.9%	79.3%
North Coast AHS	3126	7.7%	953	9.6%	174	8.4%	4253	8.1%	76.6%
Northern Sydney & Central Coast AHS	7663	19.0%	2237	22.5%	424	20.5%	10324	19.7%	77.4%
South Eastern Sydney & Illawarra AHS	6791	16.8%	1372	13.8%	344	16.7%	8507	16.2%	83.2%
Sydney South West AHS	5693	14.1%	1168	11.7%	244	11.8%	7105	13.6%	83.0%
Sydney West AHS	6522	16.2%	1149	11.5%	313	15.2%	7984	15.2%	85.0%
Total	40375	100.0%	9962	100.0%	2066	100.0%	52403	100.0%	80.2%
<i>Non-Response</i>	1236	3.0%	3430	25.6%	2154	51.0%	6820	11.5%	

CLASSIFICATION: Enrolled Nurses**Table C.39: Are you registered or enrolled as a nurse or midwife in more than one state or territory of Australia?**

	No.	%	No.	%	No.	%	No.	%	
	Working NSW		Not working NSW		Work Status Not Reported		Total		Percentage Working NSW
Yes	479	7.3%	349	14.0%	70	11.1%	898	9.3%	57.9%
No	6091	92.7%	2141	86.0%	563	88.9%	8795	90.7%	74.0%
Total	6570	100.0%	2490	100.0%	633	100.0%	9693	100.0%	72.5%
<i>Non-Response</i>	218	3.2%	77	3.0%	420	39.9%	715	6.9%	

Table C.40: States of Registration

	No.	%	No.	%	No.	%	No.	%	
	Working NSW		Not working NSW		Work Status Not Reported		Total		Percentage Working NSW
NSW	676	63.4%	284	26.6%	106	9.9%	1066	100.0%	70.4%
Vic.	103	44.0%	116	49.6%	15	6.4%	234	100.0%	47.0%
Qld	55	28.6%	120	62.5%	17	8.9%	192	100.0%	31.4%
SA	6	26.1%	16	69.6%	1	4.3%	23	100.0%	27.3%
WA	7	22.6%	21	67.7%	3	9.7%	31	100.0%	25.0%
Tas.	4	44.4%	5	55.6%	0	0.0%	9	100.0%	44.4%
NT	9	37.5%	14	58.3%	1	4.2%	24	100.0%	39.1%
ACT	25	28.7%	51	58.6%	11	12.6%	87	100.0%	32.9%
Total (Other States)	209	34.8%	343	57.2%	48	8.0%	600	100.0%	37.9%

Note: The question allows for multiple responses for other states of registration.

Table C.41: Category of Registration in NSW

	No.	%	No.	%	No.	%	No.	%	
	Working NSW		Not working NSW		Work Status Not Reported		Total		Percentage Working NSW
RN	93	72.1%	29	22.5%	7	5.4%	129	100.0%	76.2%
EN	6659	68.3%	2448	25.1%	646	6.6%	9753	100.0%	73.1%
Mothercraft nurse	187	51.8%	149	41.3%	25	6.9%	361	100.0%	55.7%
Direct entry midwife	1	33.3%	2	66.7%	0	0.0%	3	100.0%	33.3%
Total	6940	67.7%	2628	25.6%	678	6.6%	10246	100.0%	72.5%

Table C.42: Authorised as:

	No.	%	No.	%	No.	%	No.	%	
	Working NSW		Not working NSW		Work Status Not Reported		Total		Percentage Working NSW
Authorised Midwife	16	69.6%	5	21.7%	2	8.7%	23	100.0%	76.2%
Psychiatric/mental health nu	210	75.8%	50	18.1%	17	6.1%	277	100.0%	80.8%
Nurse practitioner	518	67.5%	195	25.4%	54	7.0%	767	100.0%	72.7%
Total	744	69.7%	250	23.4%	73	6.8%	1067	100.0%	74.8%

Table C.43: Where did you receive your first nursing qualification (or, if a direct-entry midwife, your first midwifery qualification)?

	No.	%	No.	%	No.	%	No.	%	
	Working NSW		Not working NSW		Work Status Not Reported		Total		Percentage Working NSW
Australia	5325	93.9%	2019	94.1%	412	90.5%	7756	93.7%	72.5%
Overseas	348	6.1%	127	5.9%	43	9.5%	518	6.3%	73.3%
Total	5673	100.0%	2146	100.0%	455	100.0%	8274	100.0%	72.6%
<i>Non-Response</i>	1115	16.4%	421	16.4%	598	56.8%	2134	20.5%	

Table C.44: If Australia - Which State?

	No.	%	No.	%	No.	%	No.	%	
	Working NSW		Not working NSW		Work Status Not Reported		Total		Percentage Working NSW
ACT	71	1.3%	34	1.7%	9	2.2%	114	1.5%	67.6%
NSW	4766	89.5%	1702	84.3%	351	85.2%	6819	87.9%	73.7%
NT	10	0.2%	3	0.1%	0	0.0%	13	0.2%	76.9%
QLD	63	1.2%	47	2.3%	6	1.5%	116	1.5%	57.3%
SA	53	1.0%	31	1.5%	5	1.2%	89	1.1%	63.1%
TAS	11	0.2%	8	0.4%	0	0.0%	19	0.2%	57.9%
VIC	335	6.3%	182	9.0%	38	9.2%	555	7.2%	64.8%
WA	16	0.3%	12	0.6%	3	0.7%	31	0.4%	57.1%
Total	5325	100.0%	2019	100.0%	412	100.0%	7756	100.0%	72.5%
<i>Not-Applicable/Specified</i>	1463	21.6%	548	21.3%	641	60.9%	2652	25.5%	

Table C.45: If Overseas - which country?

	No.	%	No.	%	No.	%	No.	%	
	Working NSW		Not working NSW		Work Status Not Reported		Total		Percentage Working NSW
Australia	5325	93.9%	2019	94.1%	412	90.5%	7756	93.8%	72.5%
New Zealand	114	2.0%	41	1.9%	15	3.3%	170	2.1%	73.5%
Other countries	0	0.0%	0	0.0%	0	0.0%	0	0.0%	0.0%
Oceania	8	0.1%	2	0.1%	6	1.3%	16	0.2%	80.0%
UK/Ireland	122	2.2%	50	2.3%	6	1.3%	178	2.2%	70.9%
Other Europe	36	0.6%	7	0.3%	6	1.3%	49	0.6%	83.7%
North America	7	0.1%	6	0.3%	0	0.0%	13	0.2%	53.8%
Central/South America	15	0.3%	1	0.0%	0	0.0%	16	0.2%	93.8%
Asia	37	0.7%	17	0.8%	6	1.3%	60	0.7%	68.5%
Middle East	4	0.1%	1	0.0%	0	0.0%	5	0.1%	80.0%
South Africa	2	0.0%	1	0.0%	3	0.7%	6	0.1%	66.7%
Other Africa	2	0.0%	1	0.0%	1	0.2%	4	0.0%	66.7%
Total	5672	100.0%	2146	100.0%	455	100.0%	8273	100.0%	72.6%
<i>Non-response:</i>	1116	16.4%	421	16.4%	598	56.8%	2135	20.5%	
<i>Non-Response</i>									

Table C.46: In what year did you first become a registered &/or enrolled nurse, or a 'direct-entry' midwife? - Enrolled Nurse in Australia

Year	No.	%	No.	%	No.	%	No.	%	%
	Working NSW		Not working NSW		Work Status Not Reported		Total		Percentage Working NSW
prior to 1960	3	27.3%	6	54.5%	2	18.2%	11	100.0%	33.3%
1960	2	33.3%	3	50.0%	1	16.7%	6	100.0%	40.0%
1961	4	57.1%	0	0.0%	3	42.9%	7	100.0%	100.0%
1962	5	50.0%	2	20.0%	3	30.0%	10	100.0%	71.4%
1963	9	52.9%	6	35.3%	2	11.8%	17	100.0%	60.0%
1964	7	43.8%	5	31.3%	4	25.0%	16	100.0%	58.3%
1965	23	56.1%	13	31.7%	5	12.2%	41	100.0%	63.9%
1966	15	46.9%	14	43.8%	3	9.4%	32	100.0%	51.7%
1967	26	68.4%	8	21.1%	4	10.5%	38	100.0%	76.5%
1968	61	64.2%	21	22.1%	13	13.7%	95	100.0%	74.4%
1969	94	63.5%	33	22.3%	21	14.2%	148	100.0%	74.0%
1970	100	65.4%	40	26.1%	13	8.5%	153	100.0%	71.4%
1971	131	68.6%	43	22.5%	17	8.9%	191	100.0%	75.3%
1972	167	67.9%	56	22.8%	23	9.3%	246	100.0%	74.9%
1973	112	61.9%	56	30.9%	13	7.2%	181	100.0%	66.7%
1974	142	64.3%	60	27.1%	19	8.6%	221	100.0%	70.3%
1975	142	65.1%	58	26.6%	18	8.3%	218	100.0%	71.0%
1976	170	64.9%	69	26.3%	23	8.8%	262	100.0%	71.1%
1977	144	64.9%	65	29.3%	13	5.9%	222	100.0%	68.9%
1978	193	63.3%	90	29.5%	22	7.2%	305	100.0%	68.2%
1979	159	68.8%	59	25.5%	13	5.6%	231	100.0%	72.9%
1980	137	63.1%	64	29.5%	16	7.4%	217	100.0%	68.2%
1981	115	55.0%	77	36.8%	17	8.1%	209	100.0%	59.9%
1982	142	60.9%	76	32.6%	15	6.4%	233	100.0%	65.1%
1983	103	60.9%	58	34.3%	8	4.7%	169	100.0%	64.0%
1984	133	70.7%	46	24.5%	9	4.8%	188	100.0%	74.3%
1985	134	62.3%	71	33.0%	10	4.7%	215	100.0%	65.4%
1986	175	61.8%	86	30.4%	22	7.8%	283	100.0%	67.0%
1987	212	63.7%	104	31.2%	17	5.1%	333	100.0%	67.1%
1988	158	64.0%	69	27.9%	20	8.1%	247	100.0%	69.6%
1989	125	61.9%	70	34.7%	7	3.5%	202	100.0%	64.1%
1990	127	63.5%	68	34.0%	5	2.5%	200	100.0%	65.1%
1991	158	67.8%	65	27.9%	10	4.3%	233	100.0%	70.9%
1992	117	63.6%	61	33.2%	6	3.3%	184	100.0%	65.7%
1993	112	66.7%	49	29.2%	7	4.2%	168	100.0%	69.6%
1994	115	72.3%	34	21.4%	10	6.3%	159	100.0%	77.2%
1995	111	66.1%	47	28.0%	10	6.0%	168	100.0%	70.3%
1996	139	71.6%	44	22.7%	11	5.7%	194	100.0%	76.0%
1997	149	74.1%	45	22.4%	7	3.5%	201	100.0%	76.8%
1998	127	69.4%	46	25.1%	10	5.5%	183	100.0%	73.4%
1999	174	80.6%	39	18.1%	3	1.4%	216	100.0%	81.7%
2000	173	72.1%	50	20.8%	17	7.1%	240	100.0%	77.6%
2001	235	79.4%	47	15.9%	14	4.7%	296	100.0%	83.3%
2002	216	80.3%	38	14.1%	15	5.6%	269	100.0%	85.0%
2003	265	84.4%	40	12.7%	9	2.9%	314	100.0%	86.9%
2004	368	88.7%	27	6.5%	20	4.8%	415	100.0%	93.2%
2005	4	100.0%	0	0.0%	0	0.0%	4	100.0%	100.0%
Total	5733	68.3%	2128	25.4%	530	6.3%	8391	100.0%	72.9%
<i>Unknown</i>	1055	15.5%	439	17.1%	523	49.7%	2017	19.4%	

Table C.47: In what year did you first become a registered &/or enrolled nurse, or a 'direct-entry' midwife? - Registered Nurse in Australia

Year	No.	%	No.	%	No.	%	No.	%	%
	Working NSW		Not working NSW		Work Status Not Reported		Total		Percentage Working NSW
prior to 1960	0	0.0%	0	0.0%	0	0.0%	0	0.0%	0.0%
1960	0	0.0%	1	100.0%	0	0.0%	1	100.0%	0.0%
1961	0	0.0%	0	0.0%	0	0.0%	0	0.0%	0.0%
1962	0	0.0%	0	0.0%	0	0.0%	0	0.0%	0.0%
1963	0	0.0%	0	0.0%	0	0.0%	0	0.0%	0.0%
1964	0	0.0%	0	0.0%	0	0.0%	0	0.0%	0.0%
1965	0	0.0%	0	0.0%	0	0.0%	0	0.0%	0.0%
1966	0	0.0%	0	0.0%	0	0.0%	0	0.0%	0.0%
1967	0	0.0%	0	0.0%	0	0.0%	0	0.0%	0.0%
1968	0	0.0%	1	33.3%	2	66.7%	3	100.0%	0.0%
1969	0	0.0%	0	0.0%	0	0.0%	0	0.0%	0.0%
1970	0	0.0%	0	0.0%	0	0.0%	0	0.0%	0.0%
1971	0	0.0%	0	0.0%	1	100.0%	1	100.0%	0.0%
1972	0	0.0%	0	0.0%	0	0.0%	0	0.0%	0.0%
1973	1	100.0%	0	0.0%	0	0.0%	1	100.0%	100.0%
1974	0	0.0%	0	0.0%	0	0.0%	0	0.0%	0.0%
1975	0	0.0%	2	66.7%	1	33.3%	3	100.0%	0.0%
1976	1	100.0%	0	0.0%	0	0.0%	1	100.0%	100.0%
1977	0	0.0%	1	100.0%	0	0.0%	1	100.0%	0.0%
1978	0	0.0%	1	100.0%	0	0.0%	1	100.0%	0.0%
1979	1	50.0%	1	50.0%	0	0.0%	2	100.0%	50.0%
1980	2	100.0%	0	0.0%	0	0.0%	2	100.0%	100.0%
1981	0	0.0%	0	0.0%	0	0.0%	0	0.0%	0.0%
1982	0	0.0%	0	0.0%	0	0.0%	0	0.0%	0.0%
1983	0	0.0%	0	0.0%	0	0.0%	0	0.0%	0.0%
1984	0	0.0%	1	100.0%	0	0.0%	1	100.0%	0.0%
1985	0	0.0%	1	100.0%	0	0.0%	1	100.0%	0.0%
1986	1	100.0%	0	0.0%	0	0.0%	1	100.0%	100.0%
1987	0	0.0%	1	100.0%	0	0.0%	1	100.0%	0.0%
1988	2	100.0%	0	0.0%	0	0.0%	2	100.0%	100.0%
1989	0	0.0%	1	100.0%	0	0.0%	1	100.0%	0.0%
1990	1	100.0%	0	0.0%	0	0.0%	1	100.0%	100.0%
1991	0	0.0%	0	0.0%	0	0.0%	0	0.0%	0.0%
1992	2	100.0%	0	0.0%	0	0.0%	2	100.0%	100.0%
1993	3	75.0%	1	25.0%	0	0.0%	4	100.0%	75.0%
1994	2	100.0%	0	0.0%	0	0.0%	2	100.0%	100.0%
1995	0	0.0%	0	0.0%	0	0.0%	0	0.0%	0.0%
1996	1	100.0%	0	0.0%	0	0.0%	1	100.0%	100.0%
1997	1	100.0%	0	0.0%	0	0.0%	1	100.0%	100.0%
1998	4	80.0%	1	20.0%	0	0.0%	5	100.0%	80.0%
1999	0	0.0%	0	0.0%	1	100.0%	1	100.0%	0.0%
2000	4	100.0%	0	0.0%	0	0.0%	4	100.0%	100.0%
2001	8	80.0%	2	20.0%	0	0.0%	10	100.0%	80.0%
2002	4	80.0%	0	0.0%	1	20.0%	5	100.0%	100.0%
2003	7	58.3%	5	41.7%	0	0.0%	12	100.0%	58.3%
2004	16	80.0%	3	15.0%	1	5.0%	20	100.0%	84.2%
2005	9	81.8%	0	0.0%	2	18.2%	11	100.0%	100.0%
Total	70	68.6%	23	22.5%	9	8.8%	102	100.0%	75.3%
<i>Unknown</i>	6718	99.0%	2544	99.1%	1044	99.1%	10306	99.0%	

Table C.48: In what year did you first become a registered &/or enrolled nurse, or a 'direct-entry' midwife? - Registered Midwife in Australia

Year	No.	%	No.	%	No.	%	No.	%	%
	Working NSW		Not working NSW		Work Status Not Reported		Total		Percentage Working NSW
prior to 1960	0	0.0%	0	0.0%	0	0.0%	0	0.0%	0.0%
1960	0	0.0%	0	0.0%	0	0.0%	0	0.0%	0.0%
1961	0	0.0%	1	100.0%	0	0.0%	1	100.0%	0.0%
1962	0	0.0%	0	0.0%	0	0.0%	0	0.0%	0.0%
1963	0	0.0%	0	0.0%	0	0.0%	0	0.0%	0.0%
1964	0	0.0%	0	0.0%	0	0.0%	0	0.0%	0.0%
1965	0	0.0%	0	0.0%	0	0.0%	0	0.0%	0.0%
1966	0	0.0%	0	0.0%	0	0.0%	0	0.0%	0.0%
1967	0	0.0%	0	0.0%	0	0.0%	0	0.0%	0.0%
1968	0	0.0%	0	0.0%	0	0.0%	0	0.0%	0.0%
1969	0	0.0%	0	0.0%	0	0.0%	0	0.0%	0.0%
1970	0	0.0%	0	0.0%	0	0.0%	0	0.0%	0.0%
1971	0	0.0%	0	0.0%	0	0.0%	0	0.0%	0.0%
1972	0	0.0%	0	0.0%	0	0.0%	0	0.0%	0.0%
1973	0	0.0%	0	0.0%	0	0.0%	0	0.0%	0.0%
1974	0	0.0%	0	0.0%	0	0.0%	0	0.0%	0.0%
1975	0	0.0%	0	0.0%	0	0.0%	0	0.0%	0.0%
1976	0	0.0%	0	0.0%	0	0.0%	0	0.0%	0.0%
1977	0	0.0%	0	0.0%	0	0.0%	0	0.0%	0.0%
1978	0	0.0%	0	0.0%	0	0.0%	0	0.0%	0.0%
1979	0	0.0%	0	0.0%	0	0.0%	0	0.0%	0.0%
1980	0	0.0%	0	0.0%	0	0.0%	0	0.0%	0.0%
1981	0	0.0%	0	0.0%	0	0.0%	0	0.0%	0.0%
1982	0	0.0%	0	0.0%	0	0.0%	0	0.0%	0.0%
1983	0	0.0%	0	0.0%	0	0.0%	0	0.0%	0.0%
1984	0	0.0%	0	0.0%	0	0.0%	0	0.0%	0.0%
1985	0	0.0%	0	0.0%	0	0.0%	0	0.0%	0.0%
1986	0	0.0%	0	0.0%	0	0.0%	0	0.0%	0.0%
1987	0	0.0%	0	0.0%	0	0.0%	0	0.0%	0.0%
1988	0	0.0%	0	0.0%	0	0.0%	0	0.0%	0.0%
1989	0	0.0%	0	0.0%	0	0.0%	0	0.0%	0.0%
1990	0	0.0%	0	0.0%	0	0.0%	0	0.0%	0.0%
1991	0	0.0%	0	0.0%	0	0.0%	0	0.0%	0.0%
1992	0	0.0%	0	0.0%	0	0.0%	0	0.0%	0.0%
1993	0	0.0%	0	0.0%	0	0.0%	0	0.0%	0.0%
1994	0	0.0%	0	0.0%	0	0.0%	0	0.0%	0.0%
1995	0	0.0%	1	100.0%	0	0.0%	1	100.0%	0.0%
1996	0	0.0%	0	0.0%	0	0.0%	0	0.0%	0.0%
1997	0	0.0%	0	0.0%	0	0.0%	0	0.0%	0.0%
1998	0	0.0%	0	0.0%	0	0.0%	0	0.0%	0.0%
1999	0	0.0%	0	0.0%	0	0.0%	0	0.0%	0.0%
2000	0	0.0%	0	0.0%	0	0.0%	0	0.0%	0.0%
2001	0	0.0%	0	0.0%	0	0.0%	0	0.0%	0.0%
2002	0	0.0%	0	0.0%	0	0.0%	0	0.0%	0.0%
2003	0	0.0%	0	0.0%	0	0.0%	0	0.0%	0.0%
2004	1	100.0%	0	0.0%	0	0.0%	1	100.0%	0.0%
2005	1	100.0%	0	0.0%	0	0.0%	1	100.0%	0.0%
Total	2	50.0%	2	50.0%	0	0.0%	4	100.0%	0.0%
<i>Unknown</i>	6786	99.97%	2565	99.92%	1053	100.0%	10404	99.96%	

Table C.49: In what year did you first become a registered &/or enrolled nurse, or a 'direct-entry' midwife? - Registered Enrolled Nurse in NSW

Year	No.	%	No.	%	No.	%	No.	%	%
	Working NSW		Not working NSW		Work Status Not Reported		Total		Percentage Working NSW
prior to 1960	6	46.2%	6	46.2%	1	7.7%	13	100.0%	50.0%
1960	3	42.9%	3	42.9%	1	14.3%	7	100.0%	50.0%
1961	1	50.0%	0	0.0%	1	50.0%	2	100.0%	100.0%
1962	3	50.0%	2	33.3%	1	16.7%	6	100.0%	60.0%
1963	2	33.3%	3	50.0%	1	16.7%	6	100.0%	40.0%
1964	5	62.5%	2	25.0%	1	12.5%	8	100.0%	71.4%
1965	12	57.1%	8	38.1%	1	4.8%	21	100.0%	60.0%
1966	12	57.1%	8	38.1%	1	4.8%	21	100.0%	60.0%
1967	19	73.1%	5	19.2%	2	7.7%	26	100.0%	79.2%
1968	52	64.2%	21	25.9%	8	9.9%	81	100.0%	71.2%
1969	75	64.7%	24	20.7%	17	14.7%	116	100.0%	75.8%
1970	87	67.4%	29	22.5%	13	10.1%	129	100.0%	75.0%
1971	112	66.3%	43	25.4%	14	8.3%	169	100.0%	72.3%
1972	152	72.4%	43	20.5%	15	7.1%	210	100.0%	77.9%
1973	107	66.5%	48	29.8%	6	3.7%	161	100.0%	69.0%
1974	133	69.6%	47	24.6%	11	5.8%	191	100.0%	73.9%
1975	138	67.3%	52	25.4%	15	7.3%	205	100.0%	72.6%
1976	164	67.8%	60	24.8%	18	7.4%	242	100.0%	73.2%
1977	129	65.8%	55	28.1%	12	6.1%	196	100.0%	70.1%
1978	147	62.6%	69	29.4%	19	8.1%	235	100.0%	68.1%
1979	147	69.0%	56	26.3%	10	4.7%	213	100.0%	72.4%
1980	137	65.2%	61	29.0%	12	5.7%	210	100.0%	69.2%
1981	101	56.4%	63	35.2%	15	8.4%	179	100.0%	61.6%
1982	109	59.9%	64	35.2%	9	4.9%	182	100.0%	63.0%
1983	93	60.4%	53	34.4%	8	5.2%	154	100.0%	63.7%
1984	120	68.6%	46	26.3%	9	5.1%	175	100.0%	72.3%
1985	122	64.6%	58	30.7%	9	4.8%	189	100.0%	67.8%
1986	159	61.6%	83	32.2%	16	6.2%	258	100.0%	65.7%
1987	189	65.6%	86	29.9%	13	4.5%	288	100.0%	68.7%
1988	131	58.5%	73	32.6%	20	8.9%	224	100.0%	64.2%
1989	116	61.1%	67	35.3%	7	3.7%	190	100.0%	63.4%
1990	124	66.3%	61	32.6%	2	1.1%	187	100.0%	67.0%
1991	161	66.8%	71	29.5%	9	3.7%	241	100.0%	69.4%
1992	114	65.9%	55	31.8%	4	2.3%	173	100.0%	67.5%
1993	109	66.5%	50	30.5%	5	3.0%	164	100.0%	68.6%
1994	110	71.9%	37	24.2%	6	3.9%	153	100.0%	74.8%
1995	119	69.6%	45	26.3%	7	4.1%	171	100.0%	72.6%
1996	138	75.8%	39	21.4%	5	2.7%	182	100.0%	78.0%
1997	126	71.6%	39	22.2%	11	6.3%	176	100.0%	76.4%
1998	135	73.0%	39	21.1%	11	5.9%	185	100.0%	77.6%
1999	160	80.4%	34	17.1%	5	2.5%	199	100.0%	82.5%
2000	164	70.4%	53	22.7%	16	6.9%	233	100.0%	75.6%
2001	226	78.2%	46	15.9%	17	5.9%	289	100.0%	83.1%
2002	216	82.8%	33	12.6%	12	4.6%	261	100.0%	86.7%
2003	280	81.4%	52	15.1%	12	3.5%	344	100.0%	84.3%
2004	393	86.6%	41	9.0%	20	4.4%	454	100.0%	90.6%
2005	6	85.7%	1	14.3%	0	0.0%	7	100.0%	85.7%
Total	5364	69.4%	1934	25.0%	428	5.5%	7726	100.0%	73.5%
<i>Unknown</i>	1424	21.0%	633	24.7%	625	59.4%	2682	25.8%	

Table C.50: In what year did you first become a registered &/or enrolled nurse, or a 'direct-entry' midwife? - Registered Nurse in NSW

Year	No.	%	No.	%	No.	%	No.	%	%
	Working NSW		Not working NSW		Work Status Not Reported		Total		Percentage Working NSW
prior to 1960	0	0.0%	1	100.0%	0	0.0%	1	100.0%	0.0%
1960	0	0.0%	0	0.0%	0	0.0%	0	0.0%	0.0%
1961	0	0.0%	0	0.0%	0	0.0%	0	0.0%	0.0%
1962	0	0.0%	0	0.0%	0	0.0%	0	0.0%	0.0%
1963	0	0.0%	0	0.0%	0	0.0%	0	0.0%	0.0%
1964	0	0.0%	0	0.0%	0	0.0%	0	0.0%	0.0%
1965	0	0.0%	0	0.0%	0	0.0%	0	0.0%	0.0%
1966	0	0.0%	0	0.0%	0	0.0%	0	0.0%	0.0%
1967	0	0.0%	0	0.0%	0	0.0%	0	0.0%	0.0%
1968	0	0.0%	0	0.0%	0	0.0%	0	0.0%	0.0%
1969	0	0.0%	0	0.0%	0	0.0%	0	0.0%	0.0%
1970	0	0.0%	0	0.0%	0	0.0%	0	0.0%	0.0%
1971	0	0.0%	0	0.0%	0	0.0%	0	0.0%	0.0%
1972	0	0.0%	0	0.0%	0	0.0%	0	0.0%	0.0%
1973	1	100.0%	0	0.0%	0	0.0%	1	100.0%	100.0%
1974	0	0.0%	0	0.0%	0	0.0%	0	0.0%	0.0%
1975	0	0.0%	0	0.0%	0	0.0%	0	0.0%	0.0%
1976	0	0.0%	1	50.0%	1	50.0%	2	100.0%	0.0%
1977	0	0.0%	0	0.0%	0	0.0%	0	0.0%	0.0%
1978	0	0.0%	0	0.0%	0	0.0%	0	0.0%	0.0%
1979	0	0.0%	0	0.0%	0	0.0%	0	0.0%	0.0%
1980	0	0.0%	0	0.0%	0	0.0%	0	0.0%	0.0%
1981	1	100.0%	0	0.0%	0	0.0%	1	100.0%	100.0%
1982	0	0.0%	0	0.0%	0	0.0%	0	0.0%	0.0%
1983	0	0.0%	0	0.0%	0	0.0%	0	0.0%	0.0%
1984	2	66.7%	1	33.3%	0	0.0%	3	100.0%	66.7%
1985	0	0.0%	1	100.0%	0	0.0%	1	100.0%	0.0%
1986	0	0.0%	0	0.0%	0	0.0%	0	0.0%	0.0%
1987	0	0.0%	2	100.0%	0	0.0%	2	100.0%	0.0%
1988	2	100.0%	0	0.0%	0	0.0%	2	100.0%	100.0%
1989	0	0.0%	0	0.0%	0	0.0%	0	0.0%	0.0%
1990	1	50.0%	1	50.0%	0	0.0%	2	100.0%	50.0%
1991	0	0.0%	0	0.0%	0	0.0%	0	0.0%	0.0%
1992	2	100.0%	0	0.0%	0	0.0%	2	100.0%	100.0%
1993	2	66.7%	1	33.3%	0	0.0%	3	100.0%	66.7%
1994	3	100.0%	0	0.0%	0	0.0%	3	100.0%	100.0%
1995	0	0.0%	1	100.0%	0	0.0%	1	100.0%	0.0%
1996	1	100.0%	0	0.0%	0	0.0%	1	100.0%	100.0%
1997	1	100.0%	0	0.0%	0	0.0%	1	100.0%	100.0%
1998	4	80.0%	1	20.0%	0	0.0%	5	100.0%	80.0%
1999	0	0.0%	0	0.0%	0	0.0%	0	0.0%	0.0%
2000	3	75.0%	1	25.0%	0	0.0%	4	100.0%	75.0%
2001	6	60.0%	4	40.0%	0	0.0%	10	100.0%	60.0%
2002	2	66.7%	0	0.0%	1	33.3%	3	100.0%	100.0%
2003	5	55.6%	4	44.4%	0	0.0%	9	100.0%	55.6%
2004	17	89.5%	1	5.3%	1	5.3%	19	100.0%	94.4%
2005	5	83.3%	0	0.0%	1	16.7%	6	100.0%	100.0%
Total	58	0.0%	20	0.0%	4	0.0%	82	0.0%	74.4%
<i>Unknown</i>	6730	99.1%	2547	99.2%	1049	99.6%	10326	99.2%	

Table C.51: In what year did you first become a registered &/or enrolled nurse, or a 'direct-entry' midwife? - Registered Midwife in NSW

Year	No.	%	No.	%	No.	%	No.	%	%
	Working NSW		Not working NSW		Work Status Not Reported		Total		Percentage Working NSW
prior to 1960	0	0.0%	0	0.0%	0	0.0%	0	0.0%	0.0%
1960	0	0.0%	0	0.0%	0	0.0%	0	0.0%	0.0%
1961	0	0.0%	1	100.0%	0	0.0%	1	100.0%	0.0%
1962	0	0.0%	0	0.0%	0	0.0%	0	0.0%	0.0%
1963	0	0.0%	0	0.0%	0	0.0%	0	0.0%	0.0%
1964	0	0.0%	0	0.0%	0	0.0%	0	0.0%	0.0%
1965	0	0.0%	0	0.0%	0	0.0%	0	0.0%	0.0%
1966	0	0.0%	0	0.0%	0	0.0%	0	0.0%	0.0%
1967	0	0.0%	0	0.0%	0	0.0%	0	0.0%	0.0%
1968	0	0.0%	0	0.0%	0	0.0%	0	0.0%	0.0%
1969	0	0.0%	0	0.0%	0	0.0%	0	0.0%	0.0%
1970	0	0.0%	0	0.0%	0	0.0%	0	0.0%	0.0%
1971	0	0.0%	0	0.0%	0	0.0%	0	0.0%	0.0%
1972	0	0.0%	0	0.0%	0	0.0%	0	0.0%	0.0%
1973	0	0.0%	0	0.0%	0	0.0%	0	0.0%	0.0%
1974	0	0.0%	0	0.0%	0	0.0%	0	0.0%	0.0%
1975	0	0.0%	0	0.0%	0	0.0%	0	0.0%	0.0%
1976	0	0.0%	0	0.0%	0	0.0%	0	0.0%	0.0%
1977	0	0.0%	0	0.0%	0	0.0%	0	0.0%	0.0%
1978	1	100.0%	0	0.0%	0	0.0%	1	100.0%	100.0%
1979	0	0.0%	0	0.0%	0	0.0%	0	0.0%	0.0%
1980	0	0.0%	0	0.0%	0	0.0%	0	0.0%	0.0%
1981	0	0.0%	0	0.0%	0	0.0%	0	0.0%	0.0%
1982	0	0.0%	0	0.0%	0	0.0%	0	0.0%	0.0%
1983	0	0.0%	0	0.0%	0	0.0%	0	0.0%	0.0%
1984	0	0.0%	0	0.0%	0	0.0%	0	0.0%	0.0%
1985	0	0.0%	0	0.0%	0	0.0%	0	0.0%	0.0%
1986	0	0.0%	0	0.0%	0	0.0%	0	0.0%	0.0%
1987	0	0.0%	0	0.0%	0	0.0%	0	0.0%	0.0%
1988	0	0.0%	0	0.0%	0	0.0%	0	0.0%	0.0%
1989	0	0.0%	0	0.0%	0	0.0%	0	0.0%	0.0%
1990	0	0.0%	0	0.0%	0	0.0%	0	0.0%	0.0%
1991	0	0.0%	0	0.0%	0	0.0%	0	0.0%	0.0%
1992	0	0.0%	0	0.0%	0	0.0%	0	0.0%	0.0%
1993	0	0.0%	0	0.0%	0	0.0%	0	0.0%	0.0%
1994	0	0.0%	0	0.0%	0	0.0%	0	0.0%	0.0%
1995	0	0.0%	1	100.0%	0	0.0%	1	100.0%	0.0%
1996	0	0.0%	0	0.0%	0	0.0%	0	0.0%	0.0%
1997	0	0.0%	0	0.0%	0	0.0%	0	0.0%	0.0%
1998	0	0.0%	0	0.0%	0	0.0%	0	0.0%	0.0%
1999	0	0.0%	0	0.0%	0	0.0%	0	0.0%	0.0%
2000	0	0.0%	0	0.0%	0	0.0%	0	0.0%	0.0%
2001	0	0.0%	0	0.0%	0	0.0%	0	0.0%	0.0%
2002	0	0.0%	0	0.0%	0	0.0%	0	0.0%	0.0%
2003	0	0.0%	0	0.0%	0	0.0%	0	0.0%	0.0%
2004	1	100.0%	0	0.0%	0	0.0%	1	100.0%	100.0%
2005	1	100.0%	0	0.0%	0	0.0%	1	100.0%	100.0%
Total	3	60.0%	2	40.0%	0	0.0%	5	100.0%	60.0%
<i>Unknown</i>	6785	100.0%	2565	99.9%	1053	100.0%	10403	100.0%	

Table C.52: For how many years since you first registered/enrolled have you worked as a nurse or midwife?

Years	No.	%	No.	%	No.	%	No.	%	No.	%
	Working NSW		Not working NSW		Work Status Not Reported		Total		Cumulative Total	
1	404	6.2%	115	4.5%	15	1.4%	534	5.1%	534	5.68%
2	311	4.8%	109	4.2%	14	1.3%	434	4.2%	968	10.29%
3	289	4.4%	117	4.6%	18	1.7%	424	4.1%	1392	14.80%
4	247	3.8%	115	4.5%	20	1.9%	382	3.7%	1774	18.86%
5	274	4.2%	164	6.4%	22	2.1%	460	4.4%	2234	23.75%
6	203	3.1%	93	3.6%	15	1.4%	311	3.0%	2545	27.05%
7	178	2.7%	88	3.4%	16	1.5%	282	2.7%	2827	30.05%
8	190	2.9%	89	3.5%	27	2.6%	306	2.9%	3133	33.30%
9	160	2.5%	57	2.2%	12	1.1%	229	2.2%	3362	35.74%
10	276	4.2%	186	7.2%	31	2.9%	493	4.7%	3855	40.98%
11	129	2.0%	45	1.8%	5	0.5%	179	1.7%	4034	42.88%
12	175	2.7%	82	3.2%	14	1.3%	271	2.6%	4305	45.76%
13	156	2.4%	59	2.3%	9	0.9%	224	2.2%	4529	48.14%
14	186	2.9%	61	2.4%	13	1.2%	260	2.5%	4789	50.91%
15	277	4.3%	113	4.4%	24	2.3%	414	4.0%	5203	55.31%
16	165	2.5%	52	2.0%	9	0.9%	226	2.2%	5429	57.71%
17	170	2.6%	50	1.9%	18	1.7%	238	2.3%	5667	60.24%
18	222	3.4%	65	2.5%	14	1.3%	301	2.9%	5968	63.44%
19	151	2.3%	41	1.6%	16	1.5%	208	2.0%	6176	65.65%
20	368	5.7%	150	5.8%	46	4.4%	564	5.4%	6740	71.65%
21	114	1.8%	26	1.0%	8	0.8%	148	1.4%	6888	73.22%
22	117	1.8%	46	1.8%	10	0.9%	173	1.7%	7061	75.06%
23	139	2.1%	37	1.4%	13	1.2%	189	1.8%	7250	77.07%
24	152	2.3%	40	1.6%	9	0.9%	201	1.9%	7451	79.21%
25	261	4.0%	78	3.0%	37	3.5%	376	3.6%	7827	83.20%
26	122	1.9%	29	1.1%	12	1.1%	163	1.6%	7990	84.94%
27	129	2.0%	16	0.6%	12	1.1%	157	1.5%	8147	86.61%
28	111	1.7%	33	1.3%	10	0.9%	154	1.5%	8301	88.24%
29	85	1.3%	14	0.5%	8	0.8%	107	1.0%	8408	89.38%
30	276	4.2%	61	2.4%	37	3.5%	374	3.6%	8782	93.36%
31	58	0.9%	11	0.4%	10	0.9%	79	0.8%	8861	94.20%
32	78	1.2%	25	1.0%	5	0.5%	108	1.0%	8969	95.34%
33	95	1.5%	12	0.5%	9	0.9%	116	1.1%	9085	96.58%
34	47	0.7%	9	0.4%	11	1.0%	67	0.6%	9152	97.29%
35	79	1.2%	11	0.4%	8	0.8%	98	0.9%	9250	98.33%
36	31	0.5%	6	0.2%	9	0.9%	46	0.4%	9296	98.82%
37	19	0.3%	3	0.1%	4	0.4%	26	0.2%	9322	99.10%
38	17	0.3%	1	0.0%	2	0.2%	20	0.2%	9342	99.31%
39	6	0.1%	2	0.1%	1	0.1%	9	0.1%	9351	99.40%
40	16	0.2%	3	0.1%	6	0.6%	25	0.2%	9376	99.67%
41	3	0.0%	0	0.0%	0	0.0%	3	0.0%	9379	99.70%
42	3	0.0%	3	0.1%	2	0.2%	8	0.1%	9387	99.79%
43	2	0.0%	2	0.1%	0	0.0%	4	0.0%	9391	99.83%
44	3	0.0%	0	0.0%	0	0.0%	3	0.0%	9394	99.86%
45	3	0.0%	2	0.1%	1	0.1%	6	0.1%	9400	99.93%
46	0	0.0%	0	0.0%	0	0.0%	0	0.0%	9400	99.93%
47-50	2	0.0%	0	0.0%	1	0.1%	3	0.0%	9403	99.96%
> 50	2	0.0%	1	0.0%	1	0.1%	4	0.0%	9407	100.00%
Total	6501	100.0%	2567	100.0%	1053	100.0%	10408	100.0%	9407	100.00%
<i>Non-Response</i>	287	4.23%	245	9.54%	469	44.54%	1001	9.62%		

Table C.53: Year of Birth, Enrolled Nurses, NSW, 2005

	No.	%	No.	%	No.	%	No.	%	
	Working NSW		Not working NSW		Work Status Not Reported		Total		Percentage Working NSW
Prior to 1940 /									
Unknown	746	11.0%	278	10.8%	195	18.5%	1219	11.7%	72.9%
1940	10	0.1%	7	0.3%	7	0.7%	24	0.2%	58.8%
1941	21	0.3%	13	0.5%	6	0.6%	40	0.4%	61.8%
1942	22	0.3%	13	0.5%	5	0.5%	40	0.4%	62.9%
1943	28	0.4%	13	0.5%	5	0.5%	46	0.4%	68.3%
1944	46	0.7%	9	0.4%	11	1.0%	66	0.6%	83.6%
1945	49	0.7%	29	1.1%	12	1.1%	90	0.9%	62.8%
1946	60	0.9%	23	0.9%	16	1.5%	99	1.0%	72.3%
1947	96	1.4%	24	0.9%	17	1.6%	137	1.3%	80.0%
1948	77	1.1%	31	1.2%	11	1.0%	119	1.1%	71.3%
1949	97	1.4%	43	1.7%	27	2.6%	167	1.6%	69.3%
1940-1949	506	7.5%	205	8.0%	117	11.1%	828	8.0%	71.2%
1950	117	1.7%	34	1.3%	30	2.8%	181	1.7%	77.5%
1951	128	1.9%	52	2.0%	24	2.3%	204	2.0%	71.1%
1952	148	2.2%	60	2.3%	22	2.1%	230	2.2%	71.2%
1953	150	2.2%	63	2.5%	26	2.5%	239	2.3%	70.4%
1954	215	3.2%	63	2.5%	35	3.3%	313	3.0%	77.3%
1955	210	3.1%	79	3.1%	34	3.2%	323	3.1%	72.7%
1956	281	4.1%	96	3.7%	57	5.4%	434	4.2%	74.5%
1957	282	4.2%	114	4.4%	52	4.9%	448	4.3%	71.2%
1958	317	4.7%	126	4.9%	39	3.7%	482	4.6%	71.6%
1959	312	4.6%	114	4.4%	39	3.7%	465	4.5%	73.2%
1950-1959	2160	31.8%	801	31.2%	358	34.0%	3319	31.9%	72.9%
1960	257	3.8%	119	4.6%	40	3.8%	416	4.0%	68.4%
1961	275	4.1%	121	4.7%	40	3.8%	436	4.2%	69.4%
1962	220	3.2%	112	4.4%	27	2.6%	359	3.4%	66.3%
1963	238	3.5%	96	3.7%	34	3.2%	368	3.5%	71.3%
1964	208	3.1%	111	4.3%	32	3.0%	351	3.4%	65.2%
1965	192	2.8%	78	3.0%	22	2.1%	292	2.8%	71.1%
1966	184	2.7%	78	3.0%	16	1.5%	278	2.7%	70.2%
1967	180	2.7%	70	2.7%	18	1.7%	268	2.6%	72.0%
1968	158	2.3%	61	2.4%	17	1.6%	236	2.3%	72.1%
1969	147	2.2%	68	2.6%	17	1.6%	232	2.2%	68.4%
1960-1969	2059	30.3%	914	35.6%	263	25.0%	3236	31.1%	69.3%
1970	145	2.1%	45	1.8%	17	1.6%	207	2.0%	76.3%
1971	136	2.0%	55	2.1%	13	1.2%	204	2.0%	71.2%
1972	123	1.8%	39	1.5%	11	1.0%	173	1.7%	75.9%
1973	116	1.7%	35	1.4%	14	1.3%	165	1.6%	76.8%
1974	102	1.5%	37	1.4%	14	1.3%	153	1.5%	73.4%
1975	107	1.6%	24	0.9%	8	0.8%	139	1.3%	81.7%
1976	80	1.2%	27	1.1%	4	0.4%	111	1.1%	74.8%
1977	74	1.1%	20	0.8%	5	0.5%	99	1.0%	78.7%
1978	73	1.1%	16	0.6%	7	0.7%	96	0.9%	82.0%
1979	58	0.9%	8	0.3%	6	0.6%	72	0.7%	87.9%
1970-1979	1014	14.9%	306	11.9%	99	9.4%	1419	13.6%	76.8%
1980	55	0.8%	17	0.7%	6	0.6%	78	0.7%	76.4%
1981	62	0.9%	15	0.6%	3	0.3%	80	0.8%	80.5%
1982	79	1.2%	14	0.5%	2	0.2%	95	0.9%	84.9%
1983	48	0.7%	12	0.5%	6	0.6%	66	0.6%	80.0%
1984	48	0.7%	3	0.1%	4	0.4%	55	0.5%	94.1%
1985	11	0.2%	2	0.1%	0	0.0%	13	0.1%	0.0%
1980-1985	303	4.5%	63	2.5%	21	2.0%	387	3.7%	82.8%
Total	6788	100.0%	2567	100.0%	1053	100.0%	10408	100.0%	72.6%

Table C.54: Sex of Respondents, Enrolled Nurses, NSW, 2005

	No.	%	No.	%	No.	%	No.	%	
	Working NSW		Not working NSW		Work Status Not Reported		Total		Percentage Working NSW
Female	6246	92.1%	2395	93.3%	965	91.6%	9606	92.3%	72.3%
Male	539	7.9%	172	6.7%	88	8.4%	799	7.7%	75.8%
Total	6785	100.0%	2567	100.0%	1053	100.0%	10405	100.0%	72.6%
<i>Non-Response</i>	3	0.0%	0	0.0%	0	0.0%	3	0.0%	

Table C.55: Indigenous Status, Enrolled Nurses, NSW, 2005

	No.	%	No.	%	No.	%	No.	%	
	Working NSW		Not working NSW		Work Status Not Reported		Total		Percentage Working NSW
No	6582	98.3%	2479	98.3%	635	97.7%	9696	98.2%	72.6%
Aboriginal	110	1.6%	40	1.6%	14	2.2%	164	1.7%	73.3%
TSI	6	0.1%	0	0.0%	0	0.0%	6	0.1%	100.0%
Both	0	0.0%	2	0.1%	1	0.2%	3	0.0%	0.0%
Total	6698	100.0%	2521	100.0%	650	100.0%	9869	100.0%	72.7%
<i>Non-Response</i>	90	1.3%	46	1.8%	403	38.3%	539	5.2%	

Table C.56: Citizenship Status, Enrolled Nurses, NSW, 2005

	No.	%	No.	%	No.	%	No.	%	
	Working NSW		Not working NSW		Work Status Not Reported		Total		Percentage Working NSW
Yes	6365	94.7%	2427	96.1%	609	93.3%	9401	95.0%	72.4%
Permanent resident	348	5.2%	97	3.8%	37	5.7%	482	4.9%	78.2%
Temporary resident	8	0.1%	2	0.1%	7	1.1%	17	0.2%	80.0%
Total	6721	100.0%	2526	100.0%	653	100.0%	9900	100.0%	72.7%
<i>Non-Response</i>	67	1.0%	41	1.6%	400	38.0%	508	4.9%	

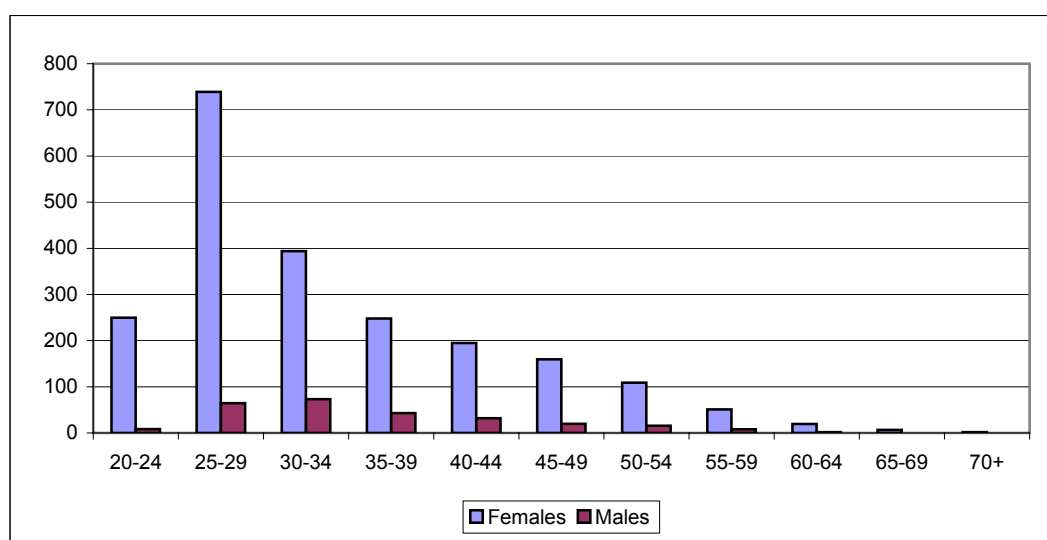
Table C.57: Area of Residence, Enrolled Nurses, NSW, 2005

	No.	%	No.	%	No.	%	No.	%	
	Working NSW		Not working NSW		Work Status Not Reported		Total		Percentage Working NSW
Greater Southern AHS	835	12.6%	361	16.6%	92	14.6%	1288	13.7%	69.8%
Greater Western AHS	628	9.5%	221	10.2%	58	9.2%	907	9.6%	74.0%
Hunter & New England AHS	1304	19.7%	460	21.1%	121	19.2%	1885	20.0%	73.9%
North Coast AHS	577	8.7%	219	10.1%	60	9.5%	856	9.1%	72.5%
Northern Sydney & Central Coast AHS	716	10.8%	246	11.3%	61	9.7%	1023	10.9%	74.4%
South Eastern Sydney & Illawarra AHS	936	14.1%	266	12.2%	90	14.3%	1292	13.7%	77.9%
Sydney South West AHS	659	10.0%	186	8.5%	61	9.7%	906	9.6%	78.0%
Sydney West AHS	962	14.5%	217	10.0%	88	13.9%	1267	13.4%	81.6%
Total	6617	100.0%	2176	100.0%	631	100.0%	9424	100.0%	75.3%
<i>Non-Response</i>	171	2.5%	391	15.2%	422	40.1%	984	9.5%	

Table D.1 Age and sex distribution of registered nurses migrating to NSW, 2005

Age group	No.	%	No.	%	No.	%	No.	%	
	Sex unknown		Female		Male		Total		Per cent female
20-24	0	0.0%	249.7	11.5%	8.3	3.1%	258	10.6%	96.8%
25-29	0	0.0%	738.8	34.0%	64.4	24.3%	803	33.0%	92.0%
30-34	0	0.0%	393.9	18.1%	73.1	27.5%	467	19.2%	84.3%
35-39	0	0.0%	248.0	11.4%	42.9	16.2%	291	11.9%	85.2%
40-44	0	0.0%	194.8	9.0%	31.8	12.0%	227	9.3%	86.0%
45-49	0	0.0%	159.4	7.3%	19.9	7.5%	179	7.4%	88.9%
50-54	0	0.0%	108.9	5.0%	15.5	5.8%	124	5.1%	87.5%
55-59	0	0.0%	50.9	2.3%	7.9	3.0%	59	2.4%	86.5%
60-64	0	0.0%	19.5	0.9%	1.6	0.6%	21	0.9%	92.4%
65-69	0	0.0%	6.6	0.3%	0	0.0%	7	0.3%	100.0%
70+	0	0.0%	1.6	0.1%	0	0.0%	2	0.1%	100.0%
Total	0	0.0%	2,172	100.0%	266	100.0%	2,438	100.0%	89.1%

Fig D.1: Age and sex distribution of registered nurses migrating to NSW, 2005

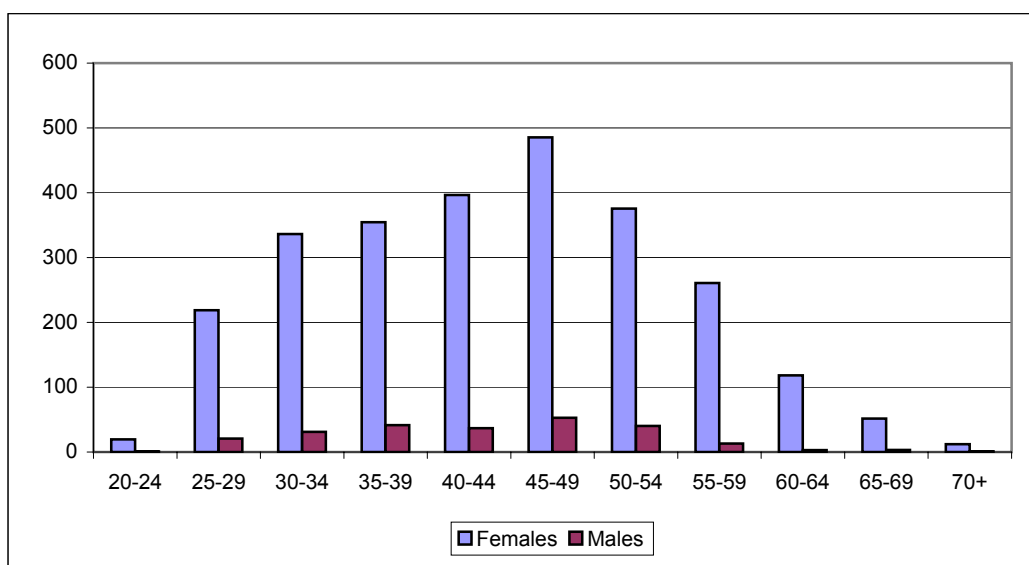
**Notes:**

- 1 Migration includes interstate and overseas migration
- 2 Age and sex cohorts are weighted to population estimates
- 3 Migration is estimated to be 4.3% of the total estimated registered nurse workforce of 56,601

Table D.2 Age and sex distribution of registered nurses re-entering the workforce in NSW, 2005

Age group	No.	%	No.	%	No.	%	No.	%	Per cent female
	Sex unknown		Female		Male		Total		
20-24	0	0.0%	19	0.7%	1	0.4%	21	0.7%	94.8%
25-29	0	0.0%	219	8.3%	21	8.5%	239	8.3%	91.4%
30-34	0	0.0%	336	12.8%	31	12.8%	368	12.8%	91.5%
35-39	0	0.0%	355	13.5%	41	16.9%	396	13.8%	89.5%
40-44	0	0.0%	397	15.1%	37	15.0%	433	15.1%	91.5%
45-49	0	0.0%	485	18.5%	53	21.6%	538	18.7%	90.2%
50-54	0	0.0%	376	14.3%	40	16.5%	416	14.5%	90.3%
55-59	0	0.0%	261	9.9%	13	5.4%	274	9.5%	95.2%
60-64	0	0.0%	118	4.5%	3	1.2%	121	4.2%	97.5%
65-69	0	0.0%	52	2.0%	3	1.3%	55	1.9%	94.3%
70+	0	0.0%	12	0.5%	1	0.4%	13	0.5%	92.4%
Total	0	0.0%	2,629	100.0%	245	100.0%	2,874	100.0%	91.5%

Fig D.2: Age and sex distribution of registered nurses re-entering the workforce in NSW, 2005

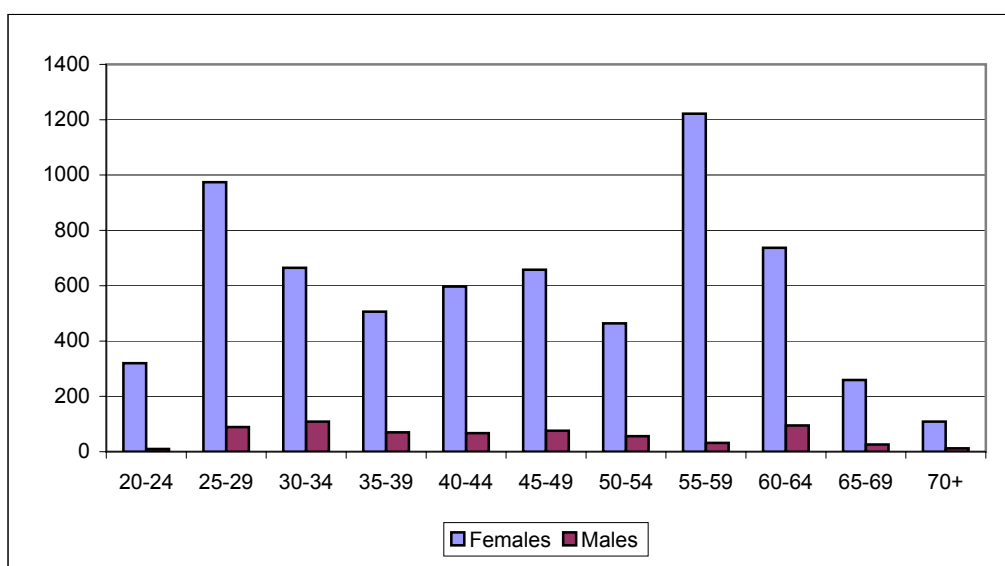


Notes:

- 1 Re-entry based on nurses not working 2004, working in NSW 2005
- 2 Age and sex cohorts are weighted to population estimates
- 3 Re-entry is estimated to be 5.1% of the total estimated registered nurse workforce of 56,601

Table D.3 Age and sex distribution of registered nurses leaving the workforce in NSW, 2005

Age group	Sex unknown		Female		Male		Total		Per cent female
	No.	%	No.	%	No.	%	No.	%	
20-24	0	0.0%	320	4.9%	10	1.6%	330	4.6%	97.0%
25-29	0	0.0%	974	15.0%	89	13.9%	1,063	14.9%	91.6%
30-34	0	0.0%	665	10.2%	109	17.0%	774	10.8%	85.9%
35-39	0	0.0%	506	7.8%	70	10.9%	576	8.1%	87.8%
40-44	0	0.0%	597	9.2%	67	10.4%	664	9.3%	89.9%
45-49	0	0.0%	658	10.1%	76	11.8%	734	10.3%	89.6%
50-54	0	0.0%	464	7.1%	56	8.7%	520	7.3%	89.2%
55-59	0	0.0%	1222	18.8%	32	5.0%	1,254	17.5%	97.4%
60-64	0	0.0%	737	11.3%	95	14.8%	832	11.6%	88.6%
65-69	0	0.0%	259	4.0%	26	4.1%	286	4.0%	90.8%
70+	0	0.0%	109	1.7%	12	1.9%	121	1.7%	90.1%
Total	0	0.0%	6,511	100.0%	642	100.0%	7,153	100.0%	91.0%

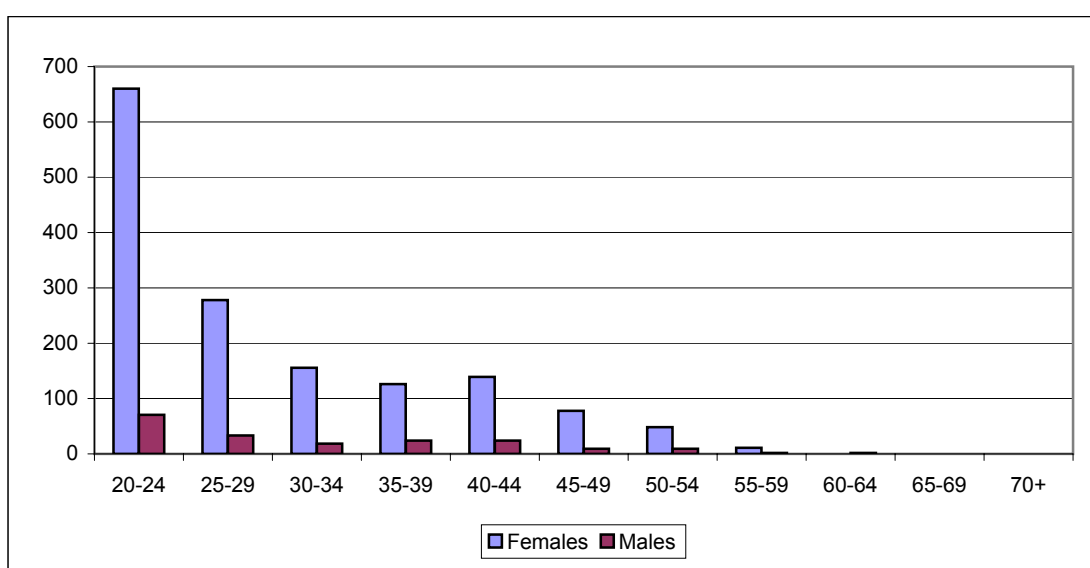
Fig D.3: Age and sex distribution of registered nurses leaving the workforce in NSW, 2005**Notes:**

- 1 Losses based on nurses working in NSW 2004, not working in NSW 2005
- 2 Age and sex cohorts are weighted to population estimates
- 3 Losses are estimated to be 12.6% of the total estimated registered nurse workforce of 56,601
- 4 Losses include nurses who migrated to NSW on short term visas and then left NSW in 2005

Table D.4 Age and sex distribution of graduate registered nurses entering the workforce in NSW, 2005

Age group	Sex unknown		Female		Male		Total		Per cent female
	No.	%	No.	%	No.	%	No.	%	
20-24	0	0.0%	660	44.1%	70	36.5%	730	43.2%	90.4%
25-29	0	0.0%	278	18.6%	33	17.3%	311	18.4%	89.3%
30-34	0	0.0%	156	10.4%	19	9.6%	174	10.3%	89.4%
35-39	0	0.0%	126	8.4%	24	12.5%	150	8.9%	84.0%
40-44	0	0.0%	139	9.3%	24	12.5%	163	9.7%	85.2%
45-49	0	0.0%	78	5.2%	9	4.8%	87	5.2%	89.4%
50-54	0	0.0%	48	3.2%	9	4.8%	57	3.4%	83.9%
55-59	0	0.0%	11	0.7%	2	1.0%	13	0.8%	85.7%
60-64	0	0.0%	0	0.0%	2	1.0%	2	0.1%	0.0%
65-69	0	0.0%	0	0.0%	0	0.0%	0	0.0%	0.0%
70+	0	0.0%	0	0.0%	0	0.0%	0	0.0%	0.0%
Total	0	0.0%	1,496	100.0%	193	100.0%	1,689	100.0%	88.6%

Fig D.4 Age and sex distribution of graduate registered nurses entering the workforce in NSW, 2005

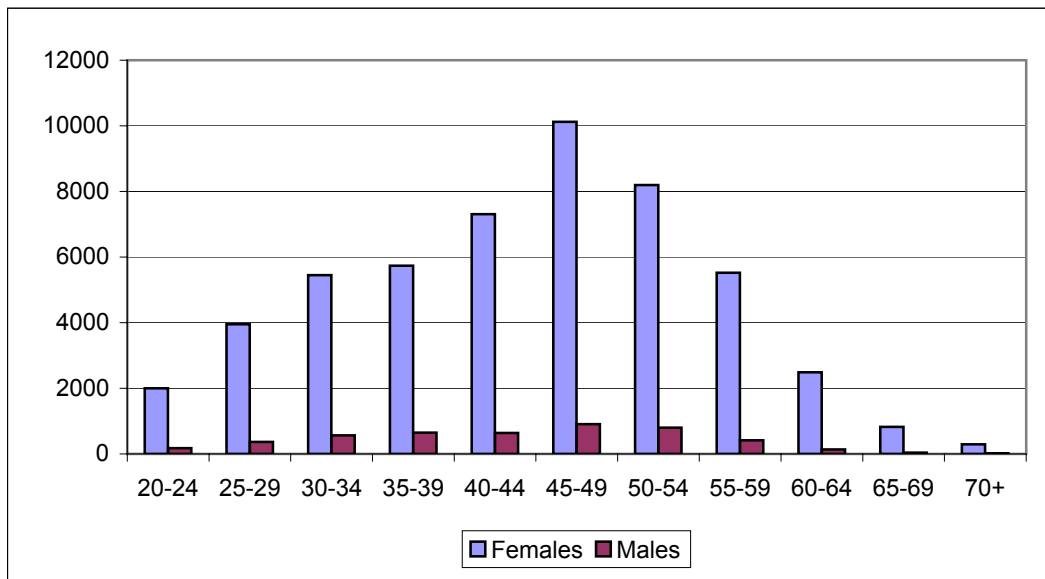
**Notes:**

- 1 Graduates based on nurses studying in NSW 2004, working in NSW 2005
- 2 Age and sex cohorts are weighted to population estimates
- 3 Graduates are estimated to be 3.0% of the total estimated registered nurse workforce of 56,601

Table D.5 Age and sex distribution of registered nurse workforce in NSW, 2005 (adjusted for non -respondents, new registrants)

Age group	Sex unknown		Female		Male		Total		Per cent female
	No.	%	No.	%	No.	%	No.	%	
20-24	0	0.0%	2001	3.9%	175	3.7%	2,177	3.8%	91.9%
25-29	0	0.0%	3951	7.6%	365	7.7%	4,316	7.6%	91.6%
30-34	0	0.0%	5450	10.5%	568	12.0%	6,018	10.6%	90.6%
35-39	0	0.0%	5737	11.1%	650	13.8%	6,386	11.3%	89.8%
40-44	0	0.0%	7308	14.1%	641	13.6%	7,950	14.0%	91.9%
45-49	0	0.0%	10120	19.5%	908	19.3%	11,028	19.5%	91.8%
50-54	0	0.0%	8193	15.8%	802	17.0%	8,996	15.9%	91.1%
55-59	0	0.0%	5521	10.6%	415	8.8%	5,936	10.5%	93.0%
60-64	0	0.0%	2489	4.8%	137	2.9%	2,625	4.6%	94.8%
65-69	0	0.0%	823	1.6%	37	0.8%	860	1.5%	0.0%
70+	0	0.0%	292	0.6%	19	0.4%	311	0.5%	0.0%
Total	0	0.0%	51,885	100.0%	4,717	100.0%	56,602	100.0%	91.7%

Fig D.5 Age and sex distribution of the registered nurse workforce in NSW, 2005 (adjusted for non -respondents, new registrants)



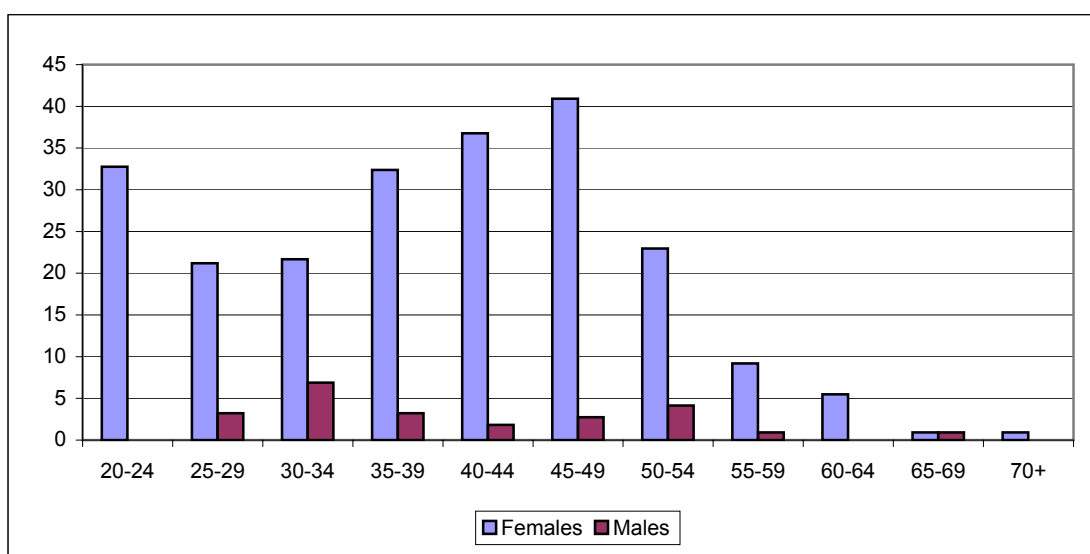
Notes:

1 Age and sex cohorts are weighted to population estimates

Table D.6 Age and sex distribution of enrolled nurses migrating to NSW, 2005

Age group	Sex unknown		Female		Male		Total		Per cent female
	No.	%	No.	%	No.	%	No.	%	
20-24	0	0.0%	33	14.5%	0	0.0%	33	13.2%	100.0%
25-29	0	0.0%	21	9.4%	3	13.5%	24	9.8%	86.8%
30-34	0	0.0%	22	9.6%	7	28.8%	29	11.5%	75.9%
35-39	0	0.0%	32	14.4%	3	13.5%	36	14.3%	90.9%
40-44	0	0.0%	37	16.3%	2	7.7%	39	15.5%	95.3%
45-49	0	0.0%	41	18.2%	3	11.5%	44	17.5%	93.7%
50-54	0	0.0%	23	10.2%	4	17.3%	27	10.9%	84.7%
55-59	0	0.0%	9	4.1%	1	3.8%	10	4.1%	91.0%
60-64	0	0.0%	5	2.4%	0	0.0%	5	2.2%	100.0%
65-69	0	0.0%	1	0.4%	1	3.8%	2	0.7%	50.0%
70+	0	0.0%	1	0.4%	0	0.0%	1	0.4%	100.0%
Total	0	0.0%	225	100.0%	24	100.0%	249	100.0%	90.4%

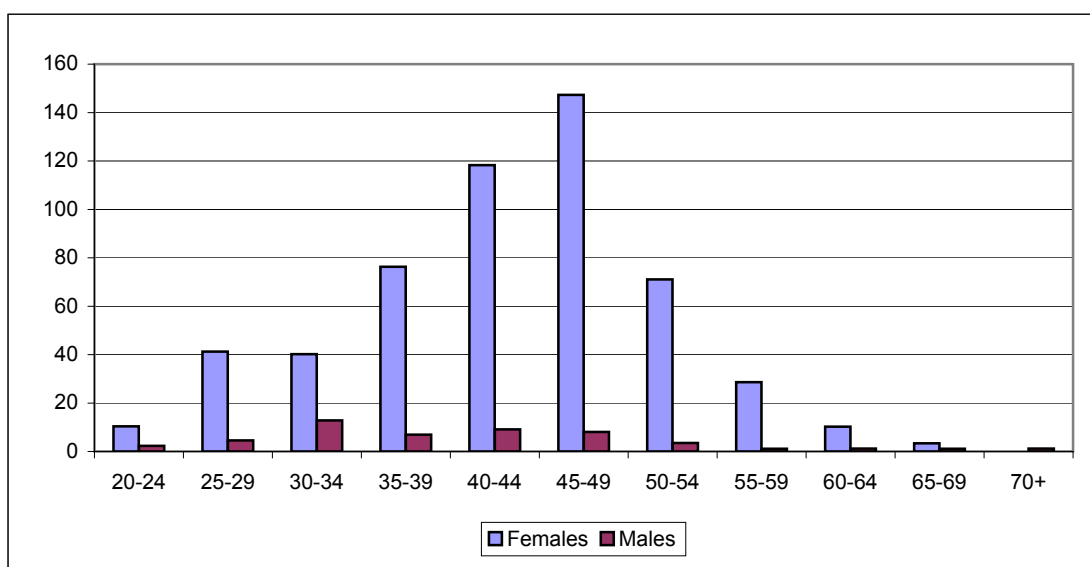
Fig D.6 Age and sex distribution of enrolled nurses migrating to NSW, 2005

**Notes:**

- 1 Migration includes interstate and overseas migration
- 2 Age and sex cohorts are weighted to population estimates
- 3 Migration is estimated to be 2.3% of the total estimated enrolled nurse workforce of 10,598

Table D.7 Age and sex distribution of enrolled nurses re-entering the workforce in NSW, 2005

Age group	Sex unknown		Female		Male		Total		Per cent female
	No.	%	No.	%	No.	%	No.	%	
20-24	0	0.0%	10	1.9%	2	4.5%	13	2.1%	81.7%
25-29	0	0.0%	41	7.5%	5	8.8%	46	7.7%	90.0%
30-34	0	0.0%	40	7.3%	13	24.6%	53	8.8%	75.9%
35-39	0	0.0%	76	13.9%	7	13.4%	83	13.9%	91.6%
40-44	0	0.0%	118	21.6%	9	17.6%	127	21.3%	92.8%
45-49	0	0.0%	147	26.9%	8	15.5%	155	25.9%	94.8%
50-54	0	0.0%	71	13.0%	4	6.7%	75	12.4%	95.3%
55-59	0	0.0%	29	5.2%	1	2.1%	30	5.0%	96.3%
60-64	0	0.0%	10	1.9%	1	2.2%	11	1.9%	89.8%
65-69	0	0.0%	3	0.6%	1	2.1%	5	0.8%	75.3%
70+	0	0.0%	0	0.0%	1	2.2%	1	0.2%	0.0%
Total	0	0.0%	547	100.0%	52	100.0%	599	100.0%	91.3%

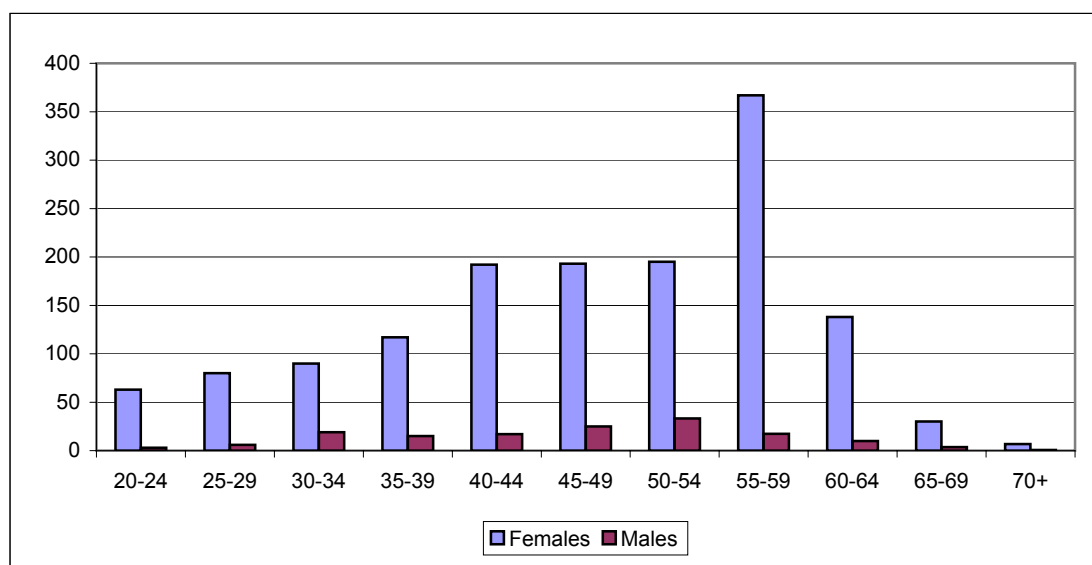
Fig D.7 Age and sex distribution of enrolled nurses re-entering the workforce in NSW, 2005**Notes:**

- 1 Re-entry based on nurses not working 2004, working in NSW 2005
- 2 Age and sex cohorts are weighted to population estimates
- 3 Re-entry is estimated to be 5.7% of the total estimated enrolled nurse workforce of 10,598

Table D.8 Age and sex distribution of enrolled nurses leaving the workforce in NSW, 2005

Age group	Sex unknown		Female		Male		Total		Per cent female
	No.	%	No.	%	No.	%	No.	%	
20-24	0	0.0%	63	4.3%	3	2.0%	66	4.1%	95.5%
25-29	0	0.0%	80	5.4%	6	4.0%	86	5.3%	93.0%
30-34	0	0.0%	90	6.1%	19	12.7%	109	6.7%	82.6%
35-39	0	0.0%	117	8.0%	15	10.0%	132	8.1%	88.6%
40-44	0	0.0%	192	13.0%	17	11.3%	209	12.9%	91.9%
45-49	0	0.0%	193	13.1%	25	16.7%	218	13.4%	88.5%
50-54	0	0.0%	195	13.3%	33	22.2%	228	14.1%	85.4%
55-59	0	0.0%	367	24.9%	17	11.6%	384	23.7%	95.5%
60-64	0	0.0%	138	9.4%	10	6.7%	148	9.1%	93.3%
65-69	0	0.0%	30	2.0%	4	2.4%	34	2.1%	89.3%
70+	0	0.0%	7	0.5%	1	0.4%	7	0.5%	91.4%
Total	0	0.0%	1,472	100.0%	150	100.0%	1,621	100.0%	90.8%

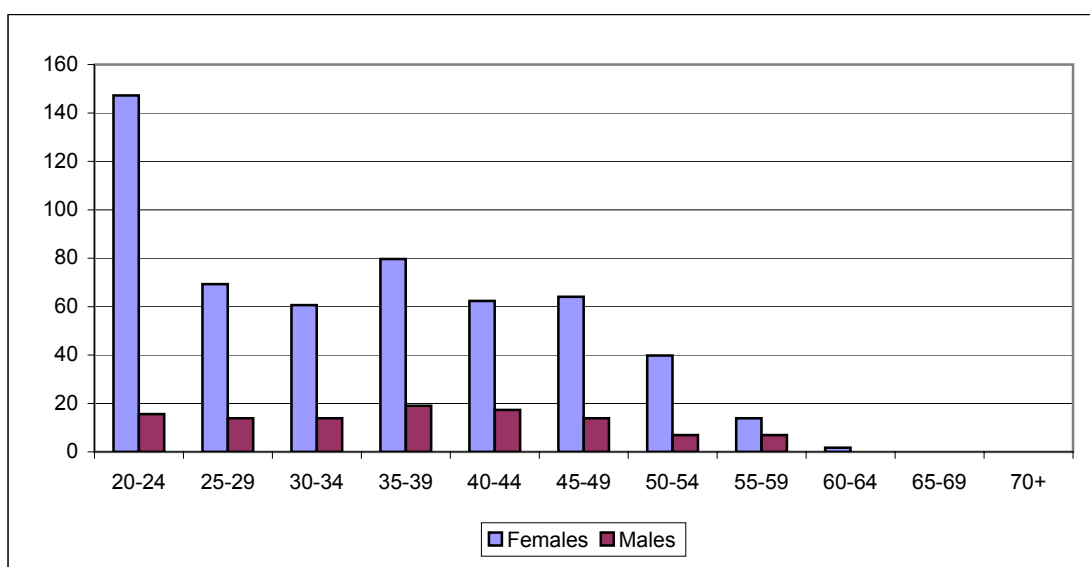
Fig D.8 Age and sex distribution of enrolled nurses leaving the workforce in NSW, 2005

**Notes:**

- 1 Losses based on nurses working in NSW 2004, not working in NSW 2005
- 2 Age and sex cohorts are weighted to population estimates
- 3 Losses are estimated to be 15.3% of the total estimated enrolled nurse workforce of 10,598
- 4 Losses include nurses who migrated to NSW on short term visas and then left NSW in 2005

Table D.9 Age and sex distribution of trainee enrolled nurses entering the workforce in NSW, 2005

Age group	Sex unknown		Female		Male		Total		Per cent female
	No.	%	No.	%	No.	%	No.	%	
20-24	0	0.0%	147	27.3%	16	14.5%	163	25.2%	90.4%
25-29	0	0.0%	69	12.9%	14	12.9%	83	12.9%	83.3%
30-34	0	0.0%	61	11.3%	14	12.9%	74	11.5%	81.4%
35-39	0	0.0%	80	14.8%	19	17.7%	99	15.3%	80.7%
40-44	0	0.0%	62	11.6%	17	16.1%	80	12.3%	78.3%
45-49	0	0.0%	64	11.9%	14	12.9%	78	12.1%	82.2%
50-54	0	0.0%	40	7.4%	7	6.5%	47	7.2%	85.2%
55-59	0	0.0%	14	2.6%	7	6.5%	21	3.2%	66.7%
60-64	0	0.0%	2	0.3%	0	0.0%	2	0.3%	100.0%
65-69	0	0.0%	0	0.0%	0	0.0%	0	0.0%	0.0%
70+	0	0.0%	0	0.0%	0	0.0%	0	0.0%	0.0%
Total	0	0.0%	539	100.0%	107	100.0%	646	100.0%	83.4%

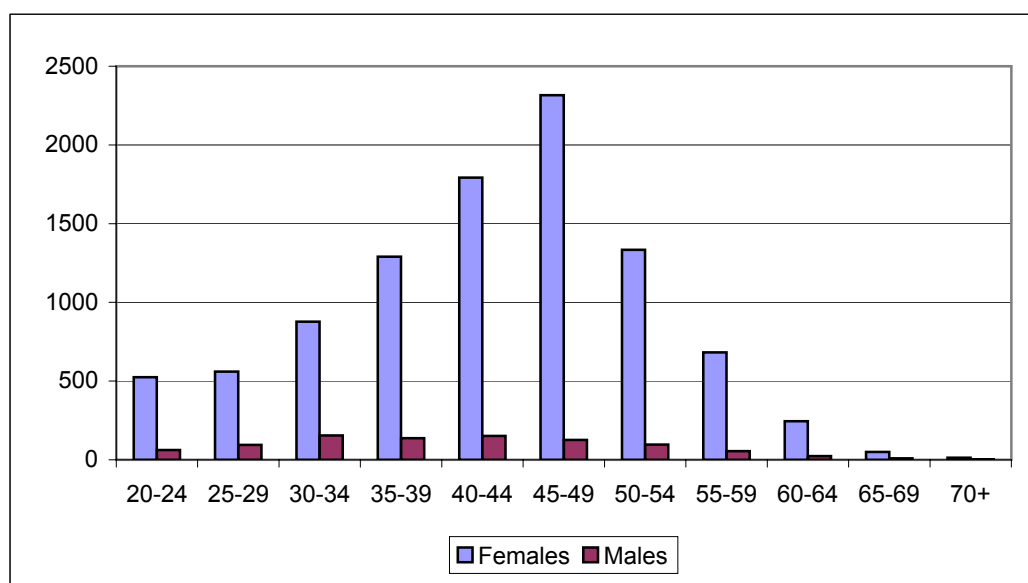
Fig D.9 Age and sex distribution of trainee enrolled nurses entering the workforce in NSW, 2005**Notes:**

- 1 Graduate enrolled nurses based on nurses studying in NSW 2004, working in NSW 2005
- 2 Age and sex cohorts are weighted to population estimates
- 3 Graduates are estimated to be 6.1% of the total estimated enrolled nurse workforce of 10,598

Table D.10 Age and sex distribution of enrolled nurse workforce in NSW, 2005
(adjusted for non -respondents, new registrants)

Age group	Sex unknown		Female		Male		Total		Per cent female
	No.	%	No.	%	No.	%	No.	%	
20-24	0	0.0%	525	5.4%	62	6.8%	587	5.5%	89.5%
25-29	0	0.0%	560	5.8%	95	10.4%	655	6.2%	85.6%
30-34	0	0.0%	878	9.1%	154	16.9%	1,032	9.7%	85.0%
35-39	0	0.0%	1291	13.3%	137	15.0%	1,428	13.5%	90.4%
40-44	0	0.0%	1792	18.5%	151	16.6%	1,944	18.3%	92.2%
45-49	0	0.0%	2316	23.9%	126	13.8%	2,442	23.0%	94.8%
50-54	0	0.0%	1334	13.8%	97	10.6%	1,431	13.5%	93.2%
55-59	0	0.0%	682	7.0%	55	6.0%	736	6.9%	92.6%
60-64	0	0.0%	245	2.5%	24	2.6%	268	2.5%	91.1%
65-69	0	0.0%	50	0.5%	9	1.0%	60	0.6%	0.0%
70+	0	0.0%	13	0.1%	3	0.3%	16	0.2%	0.0%
Total	0	0.0%	9,685	100.0%	913	100.0%	10,598	100.0%	91.4%

Fig D.10 Age and sex distribution of the enrolled nurse workforce in NSW, 2005
(adjusted for non -respondents, new registrants)



Notes:

- 1 Graduates based on nurses studying in NSW 2004, working in NSW 2005
- 2 Age and sex cohorts are weighted to population estimates