

Table 6.13 Specialist areas by sex, specialists in training working in NSW, 2005

Qualifications	No.	%	No.	%	No.	%	No.	%	Per Cent Female
	Sex Unknown		Female		Male		Total		
<b>Internal Medicine</b>									
Cardiology	1	1.3%	6	0.8%	34	3.7%	41	2.4%	15.0%
Clinical haematology	0	0.0%	7	0.9%	6	0.7%	13	0.7%	53.8%
Clinical immunology	0	0.0%	4	0.5%	3	0.3%	7	0.4%	57.1%
Clinical pharmacology	0	0.0%	1	0.1%	1	0.1%	2	0.1%	50.0%
Endocrinology	0	0.0%	18	2.4%	4	0.4%	22	1.3%	81.8%
Gastroenterology	0	0.0%	6	0.8%	16	1.7%	22	1.3%	27.3%
General medicine	8	10.7%	36	4.8%	45	4.9%	89	5.1%	44.4%
Geriatrics	0	0.0%	13	1.7%	11	1.2%	24	1.4%	54.2%
Infectious diseases	1	1.3%	5	0.7%	2	0.2%	8	0.5%	71.4%
Medical oncology	0	0.0%	12	1.6%	8	0.9%	20	1.1%	60.0%
Neurology	0	0.0%	4	0.5%	6	0.7%	10	0.6%	40.0%
Nuclear medicine	0	0.0%	9	1.2%	7	0.8%	16	0.9%	56.3%
Paediatric medicine	3	4.0%	74	9.9%	45	4.9%	122	7.0%	62.2%
Renal medicine	0	0.0%	4	0.5%	2	0.2%	6	0.3%	66.7%
Rheumatology	0	0.0%	4	0.5%	5	0.5%	9	0.5%	44.4%
Thoracic medicine	0	0.0%	12	1.6%	10	1.1%	22	1.3%	54.5%
<b>Total internal medicine</b>	<b>13</b>	<b>17.3%</b>	<b>215</b>	<b>28.9%</b>	<b>205</b>	<b>22.2%</b>	<b>433</b>	<b>24.8%</b>	<b>51.2%</b>
<b>Pathology</b>									
General pathology	0	0.0%	0	0.0%	0	0.0%	0	0.0%	0.0%
Anatomical pathology	4	5.3%	27	3.6%	21	2.3%	52	3.0%	56.3%
Clinical chemistry	0	0.0%	0	0.0%	0	0.0%	0	0.0%	0.0%
Cytopathology	0	0.0%	0	0.0%	0	0.0%	0	0.0%	0.0%
Forensic pathology	0	0.0%	0	0.0%	0	0.0%	0	0.0%	0.0%
Haematology	0	0.0%	7	0.9%	7	0.8%	14	0.8%	50.0%
Immunology	0	0.0%	3	0.4%	3	0.3%	6	0.3%	50.0%
Microbiology	0	0.0%	4	0.5%	6	0.7%	10	0.6%	40.0%
<b>Total pathology</b>	<b>4</b>	<b>5.3%</b>	<b>41</b>	<b>5.5%</b>	<b>37</b>	<b>4.0%</b>	<b>82</b>	<b>4.7%</b>	<b>52.6%</b>
<b>Surgery</b>									
General surgery	8	10.7%	33	4.4%	86	9.3%	127	7.3%	27.7%
Cardio-thoracic surgery	1	1.3%	3	0.4%	11	1.2%	15	0.9%	21.4%
Neurosurgery	2	2.7%	3	0.4%	14	1.5%	19	1.1%	0.0%
Orthopaedic surgery	3	4.0%	7	0.9%	60	6.5%	70	4.0%	0.0%
Otorhinolaryngology	1	1.3%	9	1.2%	16	1.7%	26	1.5%	0.0%
Paediatric surgery	0	0.0%	6	0.8%	0	0.0%	6	0.3%	0.0%
Plastic/reconst surgery	2	2.7%	2	0.3%	12	1.3%	16	0.9%	14.3%
Urology	1	1.3%	3	0.4%	8	0.9%	12	0.7%	0.0%
Vascular Surgery	0	0.0%	5	0.7%	8	0.9%	13	0.7%	0.0%
<b>Total surgery</b>	<b>18</b>	<b>24.0%</b>	<b>71</b>	<b>9.5%</b>	<b>215</b>	<b>23.3%</b>	<b>304</b>	<b>17.4%</b>	<b>24.8%</b>
<b>Other Specialties</b>									
Anaesthesia	9	12.0%	76	10.2%	106	11.5%	191	11.0%	41.8%
Clinical Genetics	0	0.0%	5	0.7%	1	0.1%	6	0.3%	83.3%
Dermatology	0	0.0%	11	1.5%	8	0.9%	19	1.1%	57.9%
Diagnostic Radiology	4	5.3%	21	2.8%	48	5.2%	73	4.2%	30.4%
Emergency Medicine	5	6.7%	48	6.4%	74	8.0%	127	7.3%	39.3%
I. C. Anaesthesia	1	1.3%	6	0.8%	12	1.3%	19	1.1%	33.3%
I. C. Internal Medicine	2	2.7%	6	0.8%	13	1.4%	21	1.2%	31.6%
Medical Administration	1	1.3%	7	0.9%	4	0.4%	12	0.7%	63.6%
Obst. & Gyn.	4	5.3%	53	7.1%	31	3.4%	88	5.0%	63.1%
Occupational Medicine	0	0.0%	5	0.7%	11	1.2%	16	0.9%	31.3%
Ophthalmology	3	4.0%	13	1.7%	24	2.6%	40	2.3%	35.1%
Psychiatry	6	8.0%	104	14.0%	80	8.7%	190	10.9%	56.5%
Public Health Medicine	0	0.0%	7	0.9%	5	0.5%	12	0.7%	58.3%
Radiation Oncology	2	2.7%	20	2.7%	9	1.0%	31	1.8%	69.0%
Rehabilitation Medicine	3	4.0%	20	2.7%	20	2.2%	43	2.5%	50.0%
Other	0	0.0%	16	2.1%	20	2.2%	36	2.1%	44.4%
<b>Total other specialties</b>	<b>40</b>	<b>53.3%</b>	<b>418</b>	<b>56.1%</b>	<b>466</b>	<b>50.5%</b>	<b>924</b>	<b>53.0%</b>	<b>47.3%</b>
<b>Total specialties</b>	<b>75</b>	<b>100.0%</b>	<b>745</b>	<b>100.0%</b>	<b>923</b>	<b>100.0%</b>	<b>1743</b>	<b>100.0%</b>	<b>44.7%</b>
<i>Specialty unknown</i>	2	2.6%	36	4.6%	30	3.1%	68	3.8%	

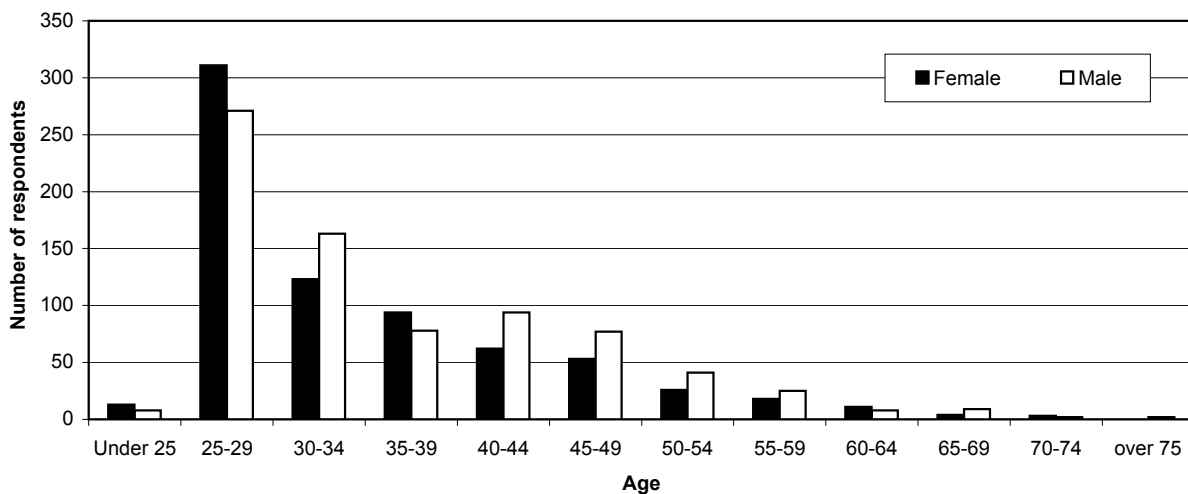
# 7

## NON-SPECIALIST HOSPITAL SALARIED MEDICAL PRACTITIONERS WORKING IN NSW

**Table 7.1** Age and sex distribution of non-specialist hospital salaried medical practitioners working in NSW, 2005

Age group	No.	%	No.	%	No.	%	
	Sex unknown	Female	Male	Total	Per cent female		
Under 25	0	13 1.8%	8 1.0%	21 1.4%	61.9%		
25-29	1	311 43.3%	271 34.8%	583 38.8%	53.3%		
30-34	3	123 17.1%	163 21.0%	289 19.3%	42.6%		
35-39	0	94 13.1%	78 10.0%	172 11.5%	54.7%		
40-44	0	62 8.6%	94 12.1%	156 10.4%	39.7%		
45-49	0	53 7.4%	77 9.9%	130 8.7%	40.8%		
50-54	1	26 3.6%	41 5.3%	68 4.5%	38.2%		
55-59	0	18 2.5%	25 3.2%	43 2.9%	41.9%		
60-64	0	11 1.5%	8 1.0%	19 1.3%	57.9%		
65-69	0	4 0.6%	9 1.2%	13 0.9%	30.8%		
70-74	0	3 0.4%	2 0.3%	5 0.3%	60.0%		
over 75	0	0 0.0%	2 0.3%	2 0.1%	0.0%		
<b>Total</b>	<b>5</b>	<b>718 100.0%</b>	<b>778 100.0%</b>	<b>1501 100.0%</b>	<b>47.8%</b>		
Age unknown		7 1.0%	19 2.4%	26 1.6%			
Age & sex unknown				86 5.3%			
Total unknown				112 6.9%			

**Figure 7.1** Age and sex distribution of non-specialist hospital salaried medical practitioners working in NSW, 2005



**Table 7.2 Age and sex of non-specialist hospital salaried medical practitioners working in NSW, 1995 – 2005**

Age group	1995	1996	1997	1998	1999	2000	2002	2003	2004	2005
<b>Male — Survey Respondents</b>										
Under 25	55	51	103	122	92	57	60	46	37	8
25-29	451	491	484	504	501	468	384	328	332	271
30-34	123	154	181	180	190	140	139	154	192	163
35-39	86	111	140	146	125	121	98	86	87	78
40-44	60	58	89	87	92	97	90	79	87	94
45-49	26	39	64	63	70	54	55	69	72	77
50-54	18	21	38	22	43	43	43	45	45	41
55-59	14	22	33	30	32	20	15	16	15	25
60-64	9	9	17	14	27	17	15	15	13	8
65-69	8	9	12	4	6	11	9	8	8	9
70-74	2	4	10	6	17	12	5	2	3	2
Over 75	2	1	4	2	14	13	3	2	1	2
<b>Total</b>	<b>854</b>	<b>970</b>	<b>1,175</b>	<b>1,180</b>	<b>1,209</b>	<b>1053</b>	<b>916</b>	<b>850</b>	<b>892</b>	<b>778</b>
<i>Age unknown</i>	70	63	73	61	74	18	19	17	16	19
<b>Female — Survey Respondents</b>										
Under 25	48	47	105	95	76	58	55	48	44	13
25-29	326	395	347	365	375	389	292	327	352	311
30-34	79	108	135	132	121	111	115	120	137	123
35-39	61	82	118	91	94	90	92	87	86	94
40-44	28	41	79	80	83	81	61	64	58	62
45-49	21	24	38	44	46	43	44	48	50	53
50-54	9	17	33	33	28	23	27	20	23	26
55-59	8	10	14	16	18	20	9	18	17	18
60-64	3	6	9	9	7	11	11	5	9	11
65-69	1	5	6	4	4	5	3	3	5	4
70-74	1	1	-	-	4	2	1	2	3	3
Over 75	-	-	-	-	1	2	1	0	0	-
<b>Total</b>	<b>585</b>	<b>736</b>	<b>884</b>	<b>869</b>	<b>857</b>	<b>835</b>	<b>711</b>	<b>742</b>	<b>784</b>	<b>718</b>
<i>Age unknown</i>	28	31	31	29	22	9	10	6	5	7
<b>Male and Female — Survey Respondents</b>										
Under 25	103	98	208	217	168	115	115	95	81	21
25-29	777	886	831	869	876	857	676	655	686	583
30-34	202	262	316	312	311	251	254	275	330	289
35-39	147	193	258	237	219	211	190	173	173	172
40-44	88	99	168	167	175	178	151	143	145	156
45-49	47	63	102	107	116	97	99	117	122	130
50-54	27	38	71	55	71	66	70	65	68	68
55-59	22	32	47	46	50	40	24	34	32	43
60-64	12	15	26	23	34	28	26	20	22	19
65-69	9	14	18	8	10	16	12	11	13	13
70-74	3	5	10	6	21	14	6	4	6	5
Over 75	2	1	4	2	15	15	4	2	1	2
<b>Total</b>	<b>1,439</b>	<b>1,706</b>	<b>2,059</b>	<b>2,049</b>	<b>2,066</b>	<b>1888</b>	<b>1627</b>	<b>1594</b>	<b>1679</b>	<b>1501</b>
<i>Age unknown</i>	98	94	104	90	96	27	29	124	252	26
<i>Age &amp; sex unknown</i>						105				86
<b>Proportion Female</b>										
<b>All Ages</b>	<b>39.9%</b>	<b>42.6%</b>	<b>42.3%</b>	<b>42.0%</b>	<b>40.7%</b>	<b>44.1%</b>	<b>43.5%</b>	<b>43.5%</b>	<b>40.9%</b>	<b>47.5%</b>

**Table 7.3 Percentage distribution of age and sex of non-specialist hospital salaried medical practitioners working in NSW, 1995 – 2005**

Age Range	1995	1996	1997	1998	1999	2000	2002	2003	2004	2005
<b>Percentage Distribution — Males</b>										
Under 25	6.4%	5.3%	8.8%	10.3%	7.6%	5.4%	7.6%	5.4%	4.1%	1.0%
25-29	52.8%	50.6%	41.2%	42.7%	41.4%	44.4%	41.4%	38.6%	37.2%	34.8%
30-34	14.4%	15.9%	15.4%	15.3%	15.7%	13.3%	15.7%	18.1%	21.5%	21.0%
35-39	10.1%	11.4%	11.9%	12.4%	10.3%	11.5%	10.3%	10.1%	9.8%	10.0%
40-44	7.0%	6.0%	7.6%	7.4%	7.6%	9.2%	7.6%	9.3%	9.8%	12.1%
45-49	3.0%	4.0%	5.4%	5.3%	5.8%	5.1%	5.8%	8.1%	8.1%	9.9%
50-54	2.1%	2.2%	3.2%	1.9%	3.6%	4.1%	3.6%	5.3%	5.0%	5.3%
55-59	1.6%	2.3%	2.8%	2.5%	2.6%	1.9%	2.6%	1.9%	1.7%	3.2%
60-64	1.1%	0.9%	1.4%	1.2%	2.2%	1.6%	2.2%	1.8%	1.5%	1.0%
65-69	0.9%	0.9%	1.0%	0.3%	0.5%	1.0%	0.5%	0.9%	0.9%	1.2%
70-74	0.2%	0.4%	0.9%	0.5%	1.4%	1.1%	1.4%	0.2%	0.3%	0.3%
Over 75	0.2%	0.1%	0.3%	0.2%	1.2%	1.2%	1.2%	0.2%	0.1%	0.3%
<b>Total</b>	<b>100.0%</b>	<b>100.0%</b>	<b>100.0%</b>	<b>100.0%</b>	<b>100.0%</b>	<b>100.0%</b>	<b>100.0%</b>	<b>100.0%</b>	<b>100.0%</b>	<b>100.0%</b>
<i>Age unknown</i>	7.6%	6.1%	5.8%	4.9%	5.8%	1.7%	5.8%	2.0%	1.8%	2.4%
<b>Percentage Distribution — Females</b>										
Under 25	8.2%	6.4%	11.9%	10.9%	8.9%	6.9%	8.9%	6.5%	5.6%	1.8%
25-29	55.7%	53.7%	39.3%	42.0%	43.8%	46.6%	43.8%	44.1%	44.9%	43.3%
30-34	13.5%	14.7%	15.3%	15.2%	14.1%	13.3%	14.1%	16.2%	17.5%	17.1%
35-39	10.4%	11.1%	13.3%	10.5%	11.0%	10.8%	11.0%	11.7%	11.0%	13.1%
40-44	4.8%	5.6%	8.9%	9.2%	9.7%	9.7%	9.7%	8.6%	7.4%	8.6%
45-49	3.6%	3.3%	4.3%	5.1%	5.4%	5.1%	5.4%	6.5%	6.4%	7.4%
50-54	1.5%	2.3%	3.7%	3.8%	3.3%	2.8%	3.3%	2.7%	2.9%	3.6%
55-59	1.4%	1.4%	1.6%	1.8%	2.1%	2.4%	2.1%	2.4%	2.2%	2.5%
60-64	0.5%	0.8%	1.0%	1.0%	0.8%	1.3%	0.8%	0.7%	1.1%	1.5%
65-69	0.2%	0.7%	0.7%	0.5%	0.5%	0.6%	0.5%	0.4%	0.6%	0.6%
70-74	0.2%	0.1%	-	-	0.5%	0.2%	0.5%	0.3%	0.4%	0.4%
Over 75	-	-	-	-	0.1%	0.2%	0.1%	0.0%	0.0%	0.0%
<b>Total</b>	<b>100.0%</b>	<b>100.0%</b>	<b>100.0%</b>	<b>100.0%</b>	<b>100.0%</b>	<b>100.0%</b>	<b>100.0%</b>	<b>100.0%</b>	<b>100.0%</b>	<b>100.0%</b>
<i>Age unknown</i>	4.6%	4.0%	3.4%	3.2%	2.5%	12.0%	2.5%	0.8%	0.6%	1.0%
<b>Percentage Distribution - Males &amp; Females</b>										
Under 25	7.2%	5.7%	10.1%	10.6%	8.1%	6.1%	8.1%	6.0%	4.8%	1.4%
25-29	54.0%	51.9%	40.4%	42.4%	42.4%	45.4%	42.4%	41.1%	40.9%	38.8%
30-34	14.0%	15.4%	15.3%	15.2%	15.1%	13.3%	15.1%	17.3%	19.7%	19.3%
35-39	10.2%	11.3%	12.5%	11.6%	10.6%	11.2%	10.6%	10.9%	10.3%	11.5%
40-44	6.1%	5.8%	8.2%	8.2%	8.5%	9.4%	8.5%	9.0%	8.6%	10.4%
45-49	3.3%	3.7%	5.0%	5.2%	5.6%	5.1%	5.6%	7.3%	7.3%	8.7%
50-54	1.9%	2.2%	3.4%	2.7%	3.4%	3.5%	3.4%	4.1%	4.1%	4.5%
55-59	1.5%	1.9%	2.3%	2.2%	2.4%	2.1%	2.4%	2.1%	1.9%	2.9%
60-64	0.8%	0.9%	1.3%	1.1%	1.6%	1.5%	1.6%	1.3%	1.3%	1.3%
65-69	0.6%	0.8%	0.9%	0.4%	0.5%	0.8%	0.5%	0.7%	0.8%	0.9%
70-74	0.2%	0.3%	0.5%	0.3%	1.0%	0.7%	1.0%	0.3%	0.4%	0.3%
Over 75	0.1%	0.1%	0.2%	0.1%	0.7%	0.8%	0.7%	0.1%	0.1%	0.1%
<b>Total</b>	<b>100.0%</b>	<b>100.0%</b>	<b>100.0%</b>	<b>100.0%</b>	<b>100.0%</b>	<b>100.0%</b>	<b>100.0%</b>	<b>100.0%</b>	<b>100.0%</b>	<b>100.0%</b>
<i>Age unknown</i>	6.4%	5.2%	4.8%	4.2%	4.4%	1.4%	4.4%	7.2%	13.1%	1.7%

**Table 7.4 Estimated number of employment positions by sex, non-specialist hospital salaried medical practitioners working in NSW, 2005**

Number of jobs	No.		%		No.		%		Per Cent Female
	Sex unknown	Female	Male	Total					
One job only	54	74.0%	496	84.8%	510	75.3%	1,060	79.4%	49.3%
Two jobs	18	24.7%	67	11.5%	117	17.3%	202	15.1%	36.4%
Three or more jobs	1	1.4%	22	3.8%	50	7.4%	73	5.5%	30.6%
<b>Total</b>	<b>73</b>	<b>100.0%</b>	<b>585</b>	<b>100.0%</b>	<b>677</b>	<b>100.0%</b>	<b>1,335</b>	<b>100.0%</b>	<b>46.4%</b>
<i>Unknown</i>	18	19.8%	140	19.3%	120	15.1%	278	17.2%	

**Notes**

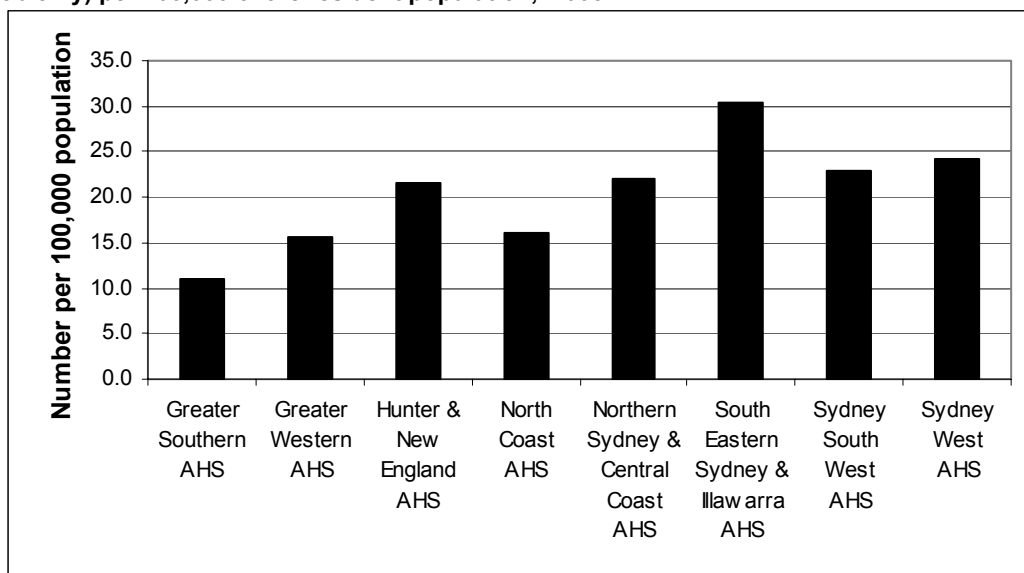
<sup>1</sup> Data has been estimated from Question 9 of the survey form, "What is the percentage of total hours worked in each locality over the last four weeks?", which was asked for up to three locations. This was not the same as data collected on jobs in previous profiles.

<sup>2</sup> "Location" refers to distinct locations although in some cases respondents provided the same postcode for more than one location.

**Table 7.5 Main geographical location by sex, non-specialist hospital salaried medical practitioners working in NSW, 2005**

Geographical location	No.		%		No.		%		Per cent female
	Sex unknown	Female	Male	Total					
<b>Area Health Service</b>									
Greater Southern	8	9.5%	14	2.1%	30	4.0%	52	3.4%	30.6%
Greater Western	4	4.8%	16	2.4%	28	3.7%	48	3.2%	44.8%
Hunter & New England	6	7.1%	83	12.2%	91	12.0%	180	11.8%	46.0%
North Coast	3	3.6%	22	3.2%	51	6.7%	76	5.0%	40.5%
Northern Sydney & Central	14	16.7%	115	16.9%	115	15.2%	244	16.0%	51.3%
South Eastern Sydney & Illawarra	19	22.6%	155	22.8%	181	23.9%	355	23.3%	42.3%
Sydney South West	19	22.6%	155	22.8%	128	16.9%	302	19.9%	42.1%
Sydney West	11	13.1%	120	17.6%	133	17.6%	264	17.4%	45.7%
<b>Total</b>	<b>84</b>	<b>100.0%</b>	<b>680</b>	<b>100.0%</b>	<b>757</b>	<b>100.0%</b>	<b>1521</b>	<b>100.0%</b>	<b>44.5%</b>
Non-response:	7	7.7%	45	6.2%	40	5.0%	92	5.7%	

**Figure 7.3: Estimated number of non-specialist hospital salaried medical practitioners working in NSW (main job only) per 100,000 of the resident population, 2005**



**Table 7.6 Geographical location of second job by sex, non-specialist hospital salaried medical practitioners working in NSW, 2005**

Location	No.	%	No.	%	No.	%	No.	%	Per cent female
	Sex unknown		Female		Male		Total		
<b>Area Health Service</b>									
Greater Southern	0	0.0%	4	3.4%	8	4.1%	12	3.6%	33.3%
Greater Western	0	0.0%	2	1.7%	4	2.1%	6	1.8%	33.3%
Hunter & New England	1	4.2%	16	13.7%	20	10.3%	37	11.0%	44.4%
North Coast	1	4.2%	4	3.4%	6	3.1%	11	3.3%	40.0%
Northern Sydney & Central Coast	9	37.5%	18	15.4%	35	17.9%	62	18.5%	34.0%
South Eastern Sydney & Illawarra	5	20.8%	30	25.6%	48	24.6%	83	24.7%	38.5%
Sydney South West	6	25.0%	26	22.2%	37	19.0%	69	20.5%	41.3%
Sydney West	2	8.3%	17	14.5%	37	19.0%	56	16.7%	31.5%
<b>Total</b>	<b>24</b>	<b>100.0%</b>	<b>117</b>	<b>100.0%</b>	<b>195</b>	<b>100.0%</b>	<b>336</b>	<b>100.0%</b>	<b>37.5%</b>
Non-response:	67	73.6%	608	83.9%	602	75.5%	1277	79.2%	

**Table 7.7 Geographical location of third job by sex, non-specialist hospital salaried medical practitioners working in NSW, 2005**

Location	No.	%	No.	%	No.	%	No.	%	Per cent female
	Sex unknown		Female		Male		Total		
<b>Area Health Service</b>									
Greater Southern	0	0.0%	2	6.3%	4	6.3%	6	6.1%	33.3%
Greater Western	0	0.0%	0	0.0%	2	3.1%	2	2.0%	0.0%
Hunter & New England	0	0.0%	1	3.1%	11	17.2%	12	12.1%	8.3%
North Coast	0	0.0%	2	6.3%	3	4.7%	5	5.1%	40.0%
Northern Sydney & Central Coast	1	33.3%	7	21.9%	9	14.1%	17	17.2%	43.8%
South Eastern Sydney & Illawarra	0	0.0%	7	21.9%	17	26.6%	24	24.2%	29.2%
Sydney South West	1	33.3%	7	21.9%	6	9.4%	14	14.1%	53.8%
Sydney West	1	33.3%	6	18.8%	12	18.8%	19	19.2%	33.3%
<b>Total</b>	<b>3</b>	<b>100.0%</b>	<b>32</b>	<b>100.0%</b>	<b>64</b>	<b>100.0%</b>	<b>99</b>	<b>100.0%</b>	<b>33.3%</b>
Non-response:	88	96.7%	693	95.6%	733	92.0%	1514	93.9%	

**Table 7.8 Geographical location of main job by sex, non-specialist hospital salaried medical practitioners working in NSW, 1995-2005**

Location	1995	1996	1997	1998	1999	2000	2002	2003	2004	2005
<b>Survey Respondents</b>										
<b>Metropolitan Area Health Services</b>										
Central Coast	79	88	92	108	92	89	70	52	97	73
Central Sydney	181	224	294	301	272	213	191	48	212	166
Hunter	138	152	158	142	149	149	120	180	161	142
Illawarra	68	86	107	114	116	105	89	76	105	94
Northern Sydney	203	200	236	239	240	238	181	244	197	169
South Eastern Sydney	323	376	433	395	393	355	290	355	319	265
South Western Sydney	100	125	203	196	232	183	153	302	190	134
Wentworth	31	64	78	68	66	69	83	264	83	76
Western Sydney	206	222	281	296	282	258	218	1521	216	185
<b>Total Metropolitan</b>	<b>1329</b>	<b>1537</b>	<b>1882</b>	<b>1859</b>	<b>1842</b>	<b>1659</b>	<b>1395</b>	<b>92</b>	<b>1580</b>	<b>1304</b>
<b>Rural Area Health Services</b>										
Far West	2	0	4	7	8	10	7	0	7	7
Greater Murray	15	21	25	29	33	43	46	0	41	37
Macquarie	4	6	5	6	11	17	13	0	13	15
Mid North Coast	14	22	21	22	28	59	54	0	61	49
Mid Western	15	26	32	32	34	32	20	0	33	28
New England	16	24	34	24	24	35	24	0	39	28
Northern Rivers	31	30	53	51	59	49	34	0	44	37
Southern	9	10	20	16	18	15	10	0	11	15
<b>Total Rural</b>	<b>106</b>	<b>139</b>	<b>194</b>	<b>187</b>	<b>215</b>	<b>260</b>	<b>208</b>	<b>0</b>	<b>249</b>	<b>216</b>
Interstate (incl. ACT)	1	6	2	2	3	9	4	0	6	5
<b>Total</b>	<b>1436</b>	<b>1682</b>	<b>2078</b>	<b>2048</b>	<b>2060</b>	<b>1928</b>	<b>1607</b>	<b>0</b>	<b>1835</b>	<b>1525</b>
<i>Location unknown</i>	101	118	85	91	102	92	49	0	96	88
<b>Percentage Distribution</b>										
<b>Metropolitan Area Health Services</b>										
Central Coast	5.5%	5.2%	4.4%	5.3%	4.5%	4.6%	4.4%	3.4%	5.3%	4.8%
Central Sydney	12.6%	13.3%	14.1%	14.7%	13.2%	11.0%	11.9%	3.2%	11.6%	10.9%
Hunter	9.6%	9.0%	7.6%	6.9%	7.2%	7.7%	7.5%	11.8%	8.8%	9.3%
Illawarra	4.7%	5.1%	5.1%	5.6%	5.6%	5.4%	5.5%	5.0%	5.7%	6.2%
Northern Sydney	14.1%	11.9%	11.4%	11.7%	11.7%	12.3%	11.3%	16.0%	10.7%	11.1%
South Eastern Sydney	22.5%	22.4%	20.8%	19.3%	19.1%	18.4%	18.0%	23.3%	17.4%	17.4%
South Western Sydney	7.0%	7.4%	9.8%	9.6%	11.3%	9.5%	9.5%	19.9%	10.4%	8.8%
Wentworth	2.2%	3.8%	3.8%	3.3%	3.2%	3.6%	5.2%	17.4%	4.5%	5.0%
Western Sydney	14.3%	13.2%	13.5%	14.5%	13.7%	13.4%	13.6%	100.0%	11.8%	12.1%
<b>Total Metropolitan</b>	<b>92.5%</b>	<b>91.4%</b>	<b>90.6%</b>	<b>90.8%</b>	<b>89.4%</b>	<b>86.0%</b>	<b>86.8%</b>	<b>5.7%</b>	<b>86.1%</b>	<b>85.5%</b>
<b>Rural Area Health Services</b>										
Far West	0.1%	-	0.2%	0.3%	0.4%	0.5%	0.4%	0.0%	0.4%	0.5%
Greater Murray	1.0%	1.2%	1.2%	1.4%	1.6%	2.2%	2.9%	0.0%	2.2%	2.4%
Macquarie	0.3%	0.4%	0.2%	0.3%	0.5%	0.9%	0.8%	0.0%	0.7%	1.0%
Mid North Coast	1.0%	1.3%	1.0%	1.1%	1.4%	3.1%	3.4%	0.0%	3.3%	3.2%
Mid Western	1.0%	1.5%	1.5%	1.6%	1.7%	1.7%	1.2%	0.0%	1.8%	1.8%
New England	1.1%	1.4%	1.6%	1.2%	1.2%	1.8%	1.5%	0.0%	2.1%	1.8%
Northern Rivers	2.2%	1.8%	2.6%	2.5%	2.9%	2.5%	2.1%	0.0%	2.4%	2.4%
Southern	0.6%	0.6%	1.0%	0.8%	0.9%	0.8%	0.6%	0.0%	0.6%	1.0%
<b>Total Rural</b>	<b>7.4%</b>	<b>8.3%</b>	<b>9.3%</b>	<b>9.1%</b>	<b>10.4%</b>	<b>13.5%</b>	<b>12.9%</b>	<b>0.0%</b>	<b>13.6%</b>	<b>14.2%</b>
Interstate (incl. ACT)	0.1%	0.4%	0.1%	0.1%	0.1%	0.5%	0.2%	0.0%	0.3%	0.3%
<b>Total</b>	<b>100.0%</b>	<b>100.0%</b>	<b>100.0%</b>	<b>100.0%</b>	<b>100.0%</b>	<b>100.0%</b>	<b>100.0%</b>	<b>0.0%</b>	<b>100.0%</b>	<b>100.0%</b>
<i>Location unknown</i>	6.6%	6.6%	3.9%	4.3%	4.7%	4.6%	3.0%	0.0%	5.0%	5.5%

**Table 7.9 Location of main job by location of residence, non-specialist hospital salaried medical practitioners working in NSW, 2005**

Geographical location of main job	Geographical location of residence									Total	Unknown or no second job	Percentage with second job in different area to main job
	Greater Southern AHS	Greater Western AHS	Hunter & New England AHS	North Coast AHS	Northern Sydney & Central Coast AHS	South Eastern Sydney & Illawarra AHS	Sydney South West AHS	Sydney West AHS				
Greater Southern AHS	30	0	0	1	3	9	5	0	48	9	37.5%	
Greater Western AHS	0	18	1	0	4	9	4	5	41	7	56.1%	
Hunter & New England AHS	0	0	165	0	7	7	6	1	186	3	11.3%	
North Coast AHS	0	0	2	50	3	5	5	2	67	10	25.4%	
Northern Sydney & Central Coast AHS	0	0	3	0	202	17	30	10	262	6	22.9%	
South Eastern Sydney & Illawarra AHS	1	0	1	0	24	245	55	7	333	3	26.4%	
Sydney South West AHS	0	0	0	0	45	50	185	47	327	4	43.4%	
Sydney West AHS	0	0	0	0	49	13	47	164	273	2	39.9%	
<b>Total</b>	<b>31</b>	<b>18</b>	<b>172</b>	<b>51</b>	<b>337</b>	<b>355</b>	<b>337</b>	<b>236</b>	<b>1537</b>	<b>44</b>	<b>31.1%</b>	
<i>Unknown</i>	1	0	1	0	6	7	5	6	26	6		
<b>Percentage working outside the area in which they live</b>	<b>3.2%</b>	<b>0.0%</b>	<b>4.1%</b>	<b>2.0%</b>	<b>40.1%</b>	<b>31.0%</b>	<b>45.1%</b>	<b>30.5%</b>				

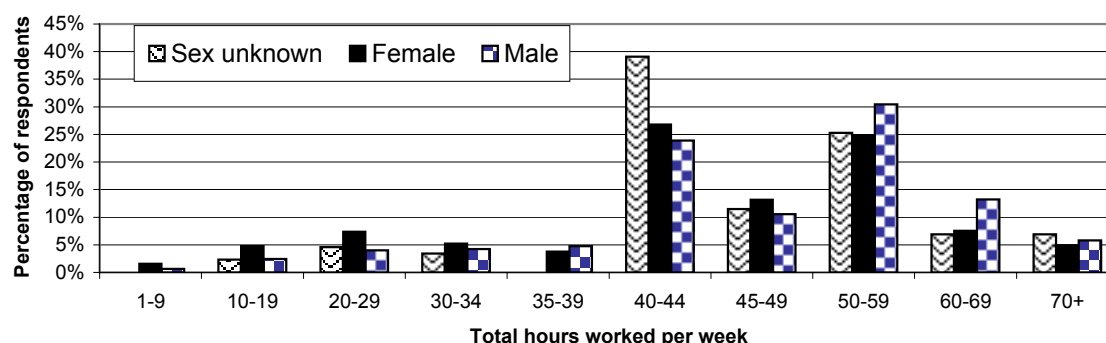
**Table 7.10 Hours per week, usually worked in all medical jobs, non-specialist hospital salaried medical practitioners working in NSW, 2005**

Hours per week	No.	%	No.	%	No.	%	No.	%	
	Sex unknown		Female		Male		Total		Per cent female
<b>Direct Patient Contact Hours<sup>2</sup></b>									
1-9	1	1.2%	29	4.6%	13	1.8%	43	3.0%	69.0%
10-19	3	3.7%	50	8.0%	40	5.6%	93	6.5%	55.6%
20-29	8	9.9%	77	12.3%	57	7.9%	142	9.9%	57.5%
30-34	7	8.6%	56	8.9%	61	8.5%	124	8.7%	47.9%
35-39	3	3.7%	43	6.8%	43	6.0%	89	6.2%	50.0%
40-44	28	34.6%	160	25.5%	175	24.3%	363	25.4%	47.8%
45-49	7	8.6%	62	9.9%	69	9.6%	138	9.7%	47.3%
50-59	18	22.2%	101	16.1%	171	23.8%	290	20.3%	37.1%
60-69	2	2.5%	28	4.5%	69	9.6%	99	6.9%	28.9%
70+	4	4.9%	22	3.5%	21	2.9%	47	3.3%	51.2%
<b>Total</b>	<b>81</b>	<b>100.0%</b>	<b>628</b>	<b>100.0%</b>	<b>719</b>	<b>100.0%</b>	<b>1428</b>	<b>100.0%</b>	<b>46.6%</b>
<i>Hours unknown &amp; no hours reported</i>	10	11.0%	97	13.4%	78	9.8%	185	11.5%	
<b>On Call — Hours Not Worked</b>									
1-9	3	21.4%	53	31.5%	41	19.7%	97	24.9%	56.4%
10-19	4	28.6%	56	33.3%	71	34.1%	131	33.6%	44.1%
20-29	2	14.3%	39	23.2%	42	20.2%	83	21.3%	48.1%
30-34	2	14.3%	5	3.0%	11	5.3%	18	4.6%	31.3%
35-39	0	0.0%	1	0.6%	4	1.9%	5	1.3%	20.0%
40-44	0	0.0%	0	0.0%	13	6.3%	13	3.3%	0.0%
45-49	1	7.1%	5	3.0%	9	4.3%	15	3.8%	35.7%
50-59	1	7.1%	4	2.4%	4	1.9%	9	2.3%	50.0%
60-69	0	0.0%	0	0.0%	1	0.5%	1	0.3%	0.0%
70+	1	7.1%	5	3.0%	12	5.8%	18	4.6%	29.4%
<b>Total</b>	<b>14</b>	<b>100.0%</b>	<b>168</b>	<b>100.0%</b>	<b>208</b>	<b>100.0%</b>	<b>390</b>	<b>100.0%</b>	<b>44.7%</b>
<i>Hours unknown &amp; no hours reported</i>	77	84.6%	557	76.8%	589	73.9%	1223	75.8%	
<b>Total Hours Actually Worked (excluding on call not worked)</b>									
1-9	0	0.0%	11	1.6%	5	0.6%	16	1.0%	68.8%
10-19	2	2.3%	33	4.8%	19	2.4%	54	3.5%	63.5%
20-29	4	4.6%	51	7.4%	31	4.0%	86	5.5%	62.2%
30-34	3	3.4%	36	5.2%	33	4.2%	72	4.6%	52.2%
35-39	0	0.0%	26	3.8%	37	4.8%	63	4.0%	41.3%
40-44	34	39.1%	185	26.8%	186	23.9%	405	26.0%	49.9%
45-49	10	11.5%	91	13.2%	82	10.5%	183	11.8%	52.6%
50-59	22	25.3%	172	24.9%	237	30.5%	431	27.7%	42.1%
60-69	6	6.9%	52	7.5%	103	13.2%	161	10.3%	33.5%
70+	6	6.9%	34	4.9%	45	5.8%	85	5.5%	43.0%
<b>Total</b>	<b>87</b>	<b>100.0%</b>	<b>691</b>	<b>100.0%</b>	<b>778</b>	<b>100.0%</b>	<b>1556</b>	<b>100.0%</b>	<b>47.0%</b>
<i>Hours unknown &amp; no hours reported</i>	4	4.4%	34	4.7%	19	2.4%	57	3.5%	

**Notes**

1. Respondents were asked to indicate "during the last 4 weeks how many hours per week did you usually work in medical jobs?", excluding time spent on travel between work locations, but including travel to home visits or other calls out, and excluding time spent on professional voluntary activities.
2. Hours per week in direct contact with patients are hours spent in scheduled patient sessions, and other face to face or telephone consultations
3. Due to the nature of the survey data it is not possible to distinguish "non-response" from "no hours".

**Figure 7.2** Distribution of total hours worked per week by sex, non-specialist hospital salaried medical practitioners working in NSW, 2005



**Table 7.11** Employment setting of main job by sector, non-specialist hospital salaried medical practitioners working in NSW, 2005

Employment setting	No.		%		No.		%		Per cent Female
	Unknown	Female	Male	Total	Female	Male	Total		
<b>Public sector</b>									
Ambulatory centre, day surgery, community health centre, outpatient clinic	2	26	18	46	2.4%	3.8%	2.4%	3.0%	59.1%
Aboriginal health service	0	2	1	3	-	0.3%	0.1%	0.2%	66.7%
Hospital, including psychiatric hospital	74	593	637	1304	88.1%	87.7%	83.4%	85.6%	48.2%
Other residential health facility	0	3	3	6	-	0.4%	0.4%	0.4%	50.0%
Tertiary education institution	1	9	7	17	1.2%	1.3%	0.9%	1.1%	56.3%
Defence forces	0	0	3	3	-	-	0.4%	0.2%	0.0%
Government department/agency	0	4	6	10	-	0.6%	0.8%	0.7%	40.0%
Other	1	6	3	10	1.2%	0.9%	0.4%	0.7%	66.7%
<b>Total public sector</b>	<b>78</b>	<b>643</b>	<b>678</b>	<b>1399</b>	<b>92.9%</b>	<b>95.1%</b>	<b>88.7%</b>	<b>91.8%</b>	<b>48.7%</b>
<b>Private sector</b>									
Private rooms/surgery	0	2	12	14	-	0.3%	1.6%	0.9%	14.3%
Ambulatory centre, day surgery, community health centre, outpatient clinic	0	2	1	3	-	0.3%	0.1%	0.2%	66.7%
24 hour/other medical centre	0	0	1	1	-	-	0.1%	0.1%	0.0%
Aboriginal health service	0	0	1	1	-	-	0.1%	0.1%	0.0%
Hospital, including psychiatric hospital	4	28	68	100	4.8%	4.1%	8.9%	6.6%	29.2%
Other residential health facility	0	0	0	0	-	-	-	-	0.0%
Tertiary education institution	1	0	0	1	1.2%	-	-	0.1%	0.0%
Other	1	1	3	5	1.2%	0.1%	0.4%	0.3%	25.0%
<b>Total private sector</b>	<b>6</b>	<b>33</b>	<b>86</b>	<b>125</b>	<b>7.1%</b>	<b>4.9%</b>	<b>11.3%</b>	<b>8.2%</b>	<b>27.7%</b>
<b>Total</b>	<b>84</b>	<b>676</b>	<b>764</b>	<b>1524</b>	<b>100.0%</b>	<b>100.0%</b>	<b>100.0%</b>	<b>100.0%</b>	<b>46.9%</b>
<i>Unknown</i>	7	49	33	89	7.7%	6.8%	4.1%	5.5%	

**Table 7.12 Type of position by sex, non-specialist hospital salaried medical practitioners working in NSW, 2005**

Salaried position	No.		%		No.		%		Per Cent Female
	Unknown Sex	Female	Male	Total	Female	Male	Total		
Intern	5	5.6%	49	6.8%	29	3.7%	83	5.2%	62.8%
RMO Yr1	23	25.8%	208	28.9%	156	19.7%	387	24.2%	57.1%
RMO Yr2	10	11.2%	125	17.4%	99	12.5%	234	14.6%	55.8%
RMO Yr3	13	14.6%	86	12.0%	97	12.3%	196	12.3%	47.0%
CMO	24	27.0%	149	20.7%	268	33.9%	441	27.6%	35.7%
Other hospital medical officer	14	15.7%	102	14.2%	142	18.0%	258	16.1%	41.8%
<b>Total</b>	<b>89</b>	<b>100.0%</b>	<b>719</b>	<b>100.0%</b>	<b>791</b>	<b>100.0%</b>	<b>1599</b>	<b>100.0%</b>	<b>47.6%</b>
<i>Unknown</i>	2	2.2%	6	0.8%	6	0.8%	14	0.9%	

**Table 7.13 Qualifications by sex, non-specialist hospital salaried medical practitioners working in NSW, 2005**

Qualifications	No.		%		No.		%		Per Cent Female
	Unknown Sex	Female	Male	Total	Female	Male	Total		
GP trainee	8	10.1%	61	10.7%	31	4.7%	100	7.7%	66.3%
Vocationally registered GP	4	5.1%	21	3.7%	34	5.2%	59	4.5%	38.2%
Other medical practitioner	67	84.8%	488	85.6%	588	90.0%	1143	87.8%	45.4%
<b>Any qualification</b>	<b>79</b>	<b>100.0%</b>	<b>570</b>	<b>100.0%</b>	<b>653</b>	<b>100.0%</b>	<b>1302</b>	<b>100.0%</b>	<b>46.6%</b>
<i>Qualifications unknown</i>	12	13.2%	155	21.4%	144	18.1%	311	19.3%	

**Table 7.14 Awaiting entry into a specialist course, by sex, non-specialist hospital salaried medical practitioners working in NSW, 2005**

Awaiting entry	No.		%		No.		%		Per Cent Female
	Unknown Sex	Female	Male	Total	Female	Male	Total		
Yes	38	45.2%	311	45.7%	310	42.0%	659	43.8%	50.1%
No	46	54.8%	370	54.3%	428	58.0%	844	56.2%	46.4%
<b>Total</b>	<b>84</b>	<b>100.0%</b>	<b>681</b>	<b>100.0%</b>	<b>738</b>	<b>100.0%</b>	<b>1503</b>	<b>100.0%</b>	<b>48.0%</b>
<i>Unknown</i>	7	7.7%	44	6.1%	59	7.4%	110	6.8%	

**Table 7.15 Years in a hospital position by sex, non-specialist hospital salaried medical practitioners working in NSW, 2005**

Years	No.		%		No.		%		Per Cent Female
	Unknown Sex	Female	Male	Total	Female	Male	Total		
less than 1 year	12	13.8%	82	11.8%	92	12.0%	186	12.0%	47.1%
1 year	18	20.7%	122	17.5%	98	12.8%	238	15.4%	55.5%
2 years	14	16.1%	139	19.9%	116	15.1%	269	17.4%	54.5%
3 or more years	43	49.4%	354	50.8%	460	60.1%	857	55.3%	43.5%
<b>Total</b>	<b>87</b>	<b>100.0%</b>	<b>697</b>	<b>100.0%</b>	<b>766</b>	<b>100.0%</b>	<b>1550</b>	<b>100.0%</b>	<b>47.6%</b>
<i>Unknown</i>	4	4.4%	28	3.9%	31	3.9%	63	3.9%	

**Table 7.16 Right of Private Practice by sex, non-specialist hospital salaried medical practitioners working in NSW, 2000**

Right of Private Practice	No.		%		No.		%		Per cent female
	Female	Female	Male	Total	Female	Male	Total		
Yes	8	9.1%	101	14.6%	159	20.9%	268	17.4%	38.8%
No	80	90.9%	589	85.4%	601	79.1%	1270	82.6%	49.5%
<b>Subtotal</b>	<b>88</b>	<b>100.0%</b>	<b>690</b>	<b>100.0%</b>	<b>760</b>	<b>100.0%</b>	<b>1538</b>	<b>100.0%</b>	<b>47.6%</b>
<i>PP rights unknown</i>	3	3.3%	35	4.8%	37	4.6%	75	4.6%	

# Appendix A

## Methodology

### (a) Timing of the Survey

Information from the 2005 Annual Medical Labour Force Survey relates to the 2005 registration renewal period. Up until 2001 renewal notices and surveys were forwarded in August to all medical practitioners registered with the New South Wales Medical Board (referred to as the Medical Board below) at that time, and the renewal fee was due by 31 October in the same year in order for the medical practitioner to be retained on the register. Survey respondents completed the survey with information about their usual working situation at that time.

In 2001 the Board changed its process of registration so that renewal notices and survey forms are now sent out on a monthly basis. Therefore survey forms are received by the Medical Board throughout the year and the survey forms are scanned and a file of survey returns compiled in the following year.

### (b) Utilisation of Board Information

The data on medical practitioners' sex, year of birth and major qualifications are provided by the Board to eliminate the need to collect this information annually on the survey form.

### (c) Survey coverage

Information from the medical labour force survey does not cover all registered medical practitioners in NSW. Previously only those registrants renewing their registration were forwarded a survey, and only renewals were included in the definition of the survey population. However in 2001 and 2003 some new registrants and restorations also received and returned forms, and therefore new decision making rules were applied regarding calculation of survey population and sample size. These categories are defined as follows:

- **New registrants:** New registrants include new local graduates, interstate graduates and overseas trained medical practitioners registering for the first time with the NSW Medical Board. It includes medical practitioners in the categories of conditional, full and non practising registration in NSW.
- **Restorations:** Restorations are persons who have been restored to the Register after a period in which they were not financial.
- **Technical restorations:** Technical restorations are medical practitioners who are restorations simply due to late payment, as they are removed from the Register and then reinstated on receipt of the payment of the renewal fee. If this group has provided survey data they have been included in the data analysis for this profile and classified as technical restorations.
- **Technical renewals:** There are a group of medical practitioners who either pay their registration fee early (say in December for January renewals in the year of the survey), or who pay in advance and earn a credit as they will not be able to make their payment at the usual time. If these medical practitioners were sent a survey form in the year of renewal and are still financial in that year they have now been included in the survey population, and their returned survey forms included as respondents. This group has now been defined as **technical renewals, even though no transaction may have been recorded for the year of the survey**. The inclusion of these medical practitioners for 2003 increased the population count and the number of respondents in that year.

For compatibility with other profiles prepared for health workforce groups registered in NSW, the definition of response is those respondents who completed the question on workforce status. In addition, it has been identified that a number of respondents have not completed the question on workforce status, but have completed the majority of the remainder of the survey form including the provision of a New South Wales postcode for work location, as well as other data such as hours worked. It was therefore

decided for data completeness, to include both of those categories in the definition of respondents, as a workforce status could be derived and it was known that they were working in New South Wales.

**Table A1.1: Persons Registered as Medical Practitioners in NSW, 2005**

Category of registration	No.	No. Row %		No. Row %		No. Total %	
		Sex unknown <sup>3</sup>	Female	Male	Total		
New registrants <sup>4</sup>	14	859	42.4%	1166	57.6%	2,039	100.0%
Total restorations:	0	34	34.0%	66	66.0%	100	100.0%
"True" restorations	0	10	37.0%	17	63.0%	27	100.0%
"Technical" restorations <sup>4</sup>	0	24	32.9%	49	67.1%	73	100.0%
Renewals <sup>4</sup>	60	7,586	31.5%	16,463	68.3%	24,109	100.0%
Technical renewals <sup>4</sup>	0	0	0.0%	0	0.0%	0	100.0%
Deletions	60	585	32.2%	1,171	64.5%	1,816	100.0%

**Notes:**

- 1 The table includes information on medical practitioners who were financial with the Board during 2005.
- 2 Some medical practitioners may be included in more than one category during the twelve month period.
- 3 There were 134 new registrations, renewals and deletions with no sex reported
- 4 New registrations with a survey form, technical restorations (restorations with a survey form), renewals and technical renewals with a survey form are classified as respondents

There were 26,248 medical practitioners registered with the Medical Board in 2005 in the categories of full, conditional and non practising registration, excluding 1,816 medical practitioners who let their registration lapse within that time period (deletions). Females were 32.4% of total registrants and males 67.6%.

The labour force characteristics of new registrants and restorations may vary from other registrants who are part of the survey target group, and only some of these categories of registrants are sent a survey form. Any extrapolation of their demographic characteristics or work patterns from the survey data should be made with care.

**(d) Sample size, response rate, participation rate and estimates of total workforce size**

Table A1.2 shows the trends in categories of registration, survey respondents, response rate, participation rate and estimates of total medical practitioner workforce size in NSW between 1995 and 2005. Table A1.2 reports two estimates of workforce size based on:

- Extrapolation from response rate assuming unknown respondents participate in the workforce at the same rate as known respondents, and assuming that 90% of new registrations without a survey form and 80% of true restorations are in the workforce. This results in an estimated workforce size of 21,070.
- Revised workforce estimates involving a detailed weighting of the data file using the variables of category of registration (new, renewal, restoration), category of medical practitioner and workforce status. This results in an estimated workforce size in NSW of 21,660 headcount in 2005.

**Table A1.2: Trends in sample size, response rate, participation rate and estimates of workforce size 1995-2005**

Year of survey	1995	1996	1997	1998	1999	2000	2001	2002	2003	2004	2005
<b>Categories of registration</b>											
New registrants	1,256	1,360	846	938	687	974	894	978	1,358	1,903	2,039
Renewals	20,307	20,823	21,820	22,676	23,350	22,908	23,409	24,011	23,163	24,075	24,182
Restorations/other	539	587	178	240	370	261	133	137	187	46	27
Temporary registrants						592					
<b>Registrants</b>	<b>22,102</b>	<b>22,770</b>	<b>22,844</b>	<b>23,854</b>	<b>24,407</b>	<b>24,735</b>	<b>24,436</b>	<b>25,126</b>	<b>24,708</b>	<b>26,024</b>	<b>26,248</b>
<b>Workforce estimate based on response rate of renewals</b>											
	17728	18343	18480	19030	19211	18,915	19,295	19,968	19,867	21070	21,142
<b>response rate</b>	<b>92.3%</b>	<b>92.0%</b>	<b>88.9%</b>	<b>88.4%</b>	<b>85.3%</b>	<b>90.0%</b>	<b>24.9%</b>	<b>71.5%</b>	<b>80.5%</b>	<b>85.5%</b>	<b>84.4%</b>
GP	6804	8047	8320	8185	8306	8072	8078	8083	8110	8441	8587
specialists	5584	6238	6359	6623	6718	6913	7042	7170	7299	8245	8121
specialists in training	1465	1682	1830	1894	1968	1892	2058	2224	2268	2342	2420
non specialists hospital	1826	2156	2558	2560	2661	2433	2408	2383	2526	2618	2301
<b>Additive Total</b>	<b>15678</b>	<b>18123</b>	<b>19067</b>	<b>19262</b>	<b>19652</b>	<b>19311</b>	<b>19586</b>	<b>19861</b>	<b>20203</b>	<b>21646</b>	<b>21429</b>
Additive total as % of workforce estimate	88.4%	98.8%	103.2%	101.2%	102.3%	102.1%	101.5%	100.7%	101.7%	102.7%	101.4%
Method of adjustment	increase to 100%	increase to 100%	use category allocation	reduce to 100%	reduce to 100%	use category allocation	weighted mid point	use category allocation	use category allocation	use category allocation	use category allocation
<b>Revised workforce estimates</b>											
GP	7693	8145	7982	8086	8120	7654	7803	8006	7912	8049	8121
specialists	6314	6314	6452	6544	6567	6571	6834	7146	7242	7568	7748
specialists in training	1656	1702	1865	1871	1924	1963	2094	2239	2168	2263	2291
non specialists hospital	2064	2182	2420	2529	2601	2858	2697	2555	2923	3426	3500
<b>Revised Total</b>	<b>17728</b>	<b>18343</b>	<b>18719</b>	<b>19030</b>	<b>19211</b>	<b>19046</b>	<b>19428</b>	<b>19946</b>	<b>20245</b>	<b>21306</b>	<b>21660</b>
<b>Variation from previous total workforce estimate based on response rate</b>											
	0	0	239	0	0	131	133	-22	378	236	518

Note: method of estimating new registrations changes from 2003 onwards

Table A1.2 shows that the response rate was 84.4%, slightly lower than 85.5% in 2004.

#### e) Calculating category population estimates

A survey form change in 2000 resulted in medical practitioners having to nominate their primary practice area. The form for 2000 onwards requests nomination of the ONE area in which medical practitioners primarily practise, either GP/primary care practitioners, non-specialist hospital, specialists, or specialist in training. Previous survey forms allowed for the collection of multiple responses to this question and therefore the data from 2000 onwards for medical category is not directly comparable with previous years without adjustment. The workforce estimates by category from 1995 to 2002 reported in recent profiles have been recalculated to identify the estimated size of medical workforce categories over the period, and therefore the additive total of the size of the medical workforce.

The data on numbers identifying their primary practice area were calculated as a proportion of the total workforce and applied to the estimated workforce total by response rate. The additive total was then compared to the estimated workforce total. These two estimates varied over the time period, and ranged from an under response to an over response, from as low as 88.4% in 1995 to 103.2% in 1997. Adjustments were therefore made as follows:

- Between 1992 and 1996 there was an under response, and therefore the category estimates were increased to the estimated workforce number based on response rate
- For 1997, 2000, 2002, 2003, 2004 and 2005 the category allocation method was used, where the allocation to primary category was made in the priority order of specialist, specialist in training, general practitioner, non specialist hospital practitioner
- There was no data available to calculate 1998 responses other than the original response by category, and as the over response was only 101.2%, it was decided to weight the response by category down to 100%
- 1999 data was particularly difficult to adjust, and the category allocation method resulted in major discontinuities in the time series data by category. As a result it was decided to weight the response by category down to 100%, the same method as for 1998.
- The calculation of 2000, 2002, 2003, 2004 and 2005 category estimates involved a detailed weighting of the data file using the variables of category of registration (new, renewal, restoration), medical practitioner category, and workforce status.
- The midpoint method was applied to the 2001 data, as the survey response was only 24.9% for 2001, due to a change in the method of mailing out renewal notices and therefore survey forms in that year.

Table A1.2 indicates that the final workforce estimates only vary by a small number from the original workforce estimates for 1997, 2000, 2001, 2002, 2003 and 2004, although there is a wider variation for 2005. **The revised workforce estimates are now the preferred workforce estimates and category estimates for the time series 1995 to 2005.**

#### **f) Definition of NSW workforce**

In 2005, 80.5 % of the 20,399 respondents to the survey or 16,268 medical practitioners indicated that they were working only or mainly in NSW, or currently working, but on leave for three months or longer. These survey respondents are the unadjusted workforce and are referred to throughout the publication as medical practitioners working in NSW.

### ***Notes to assist in interpreting data in this publication***

#### **g) Changes to the survey form in 2000**

There were changes made to the questions on the 2000 survey form which have resulted in the need to apply different definitions to the data. One of the major changes was the collection of data on hours worked by location, rather than frequency responses on the number of jobs. Therefore the question on "three main locations where medical practitioners worked over the last four weeks and percentage of hours worked in each locality" (Q. 9 on the survey form) was used to determine the number of respondents working at one, two or three locations. In some cases, the same postcode was recorded for more than location.

The major constraint with this type of question is the high non response which results when respondents are asked to record hours worked. The non response rate to the question on estimated number of locations was twenty percent in 2000, 11.3% in 2002 and 11.7% in 2003.

In addition, the question on work settings was changed to ask "how many hours per week over the last four weeks were worked in each of the following settings?" (Q.8 on the survey form). The non response rate to this question was 6.8% in 2000, 5.0% in 2002 and 4.6% in 2003.

The changes to the survey questions have resulted in constraints in the ability to compare data over time. Other changes to the survey form questions are documented below.

#### **h) Other constraints on time series data**

Care should be taken when analysing longitudinal data as not all data items are directly comparable across all years. A number of particular issues need to be considered:

- The annual labour force survey has been revised on a number of occasions between 1993 and 2004, with a major revision in 1994 and again to key questions in 2000. New questions have been added while others have been dropped; new categories have inevitably affected the number of medical practitioners responding to other categories.
- Information on primary care practitioners (section 4), specialists (section 5), specialists in training (section 6) and non-specialist hospital salaried medical practitioners (section 7) will be affected by changes in the way in which this information has been elicited from respondents.
- In 1993, the survey reporting period was 15 months rather than the usual 12 months in order to bring the period in line with the NSW Medical Board's financial year. This artificially increased the number of new registrants reported in 1993 and reduced the proportion of recent medical graduates in that year's data. This occurred again in 1997, but data from 1996 to 1999 are not adjusted in order to allow comparability of data across this time period.
- Registration categories and the manner in which the data were provided by the Medical Board were changed in 1993, 2001 and 2003. This may affect in particular the classification of registrants as either renewals or restorations or new registrants.

As a result, data from 1994, 1995 and 1996 can be readily compared. Data from 1996 to 1999 can also be compared, apart from minor changes in 1998 to the categories of work status (not working categories only), remunerated hours worked per week (on call hours worked absorbed into direct patient care hours), and number of specialties coded (from 47 to 49 categories). Data from 2000 to 2005 can also be compared; apart from the method of estimating workforce size and participation rate as there were changes in the renewal process which resulted in some new registrants and restorations returning survey forms from 2002 onwards, and the method of counting new registrations which was changed in 2003 due to changes in the structure of the Board data file.

When comparing data from prior to 1994 consideration should be given to the effect of the extent of the discontinuities.

#### **i) Figures have not been adjusted for non-response by question**

Data in this publication have not been adjusted for non response to specific questions. However, a comparison of non response rates which are shown at the base of each table indicate that there were relatively similar non response levels to the main tables over the years of reporting profile data.

#### **j) Data reported in the tables**

Data has only been weighted to population estimates for a limited number of questions due to the constraints on error rates with small cell sizes.

#### **k) Conventions used in this publication**

Throughout this publication, figures within the tables may not add to the total shown where it has been necessary to round numbers. Percentages printed as 0.0 may denote less than 0.05%.

*Italics* are used to report unknown data.

**Bold** is used to indicate a total or subtotal.

Vertical lines in tables note significant discontinuities.

0 is used for zero .

— denotes not applicable.

n/a denotes data is not available.

---

# Appendix B

Additional Information on  
Medical Practitioners Registered  
in NSW in 2005

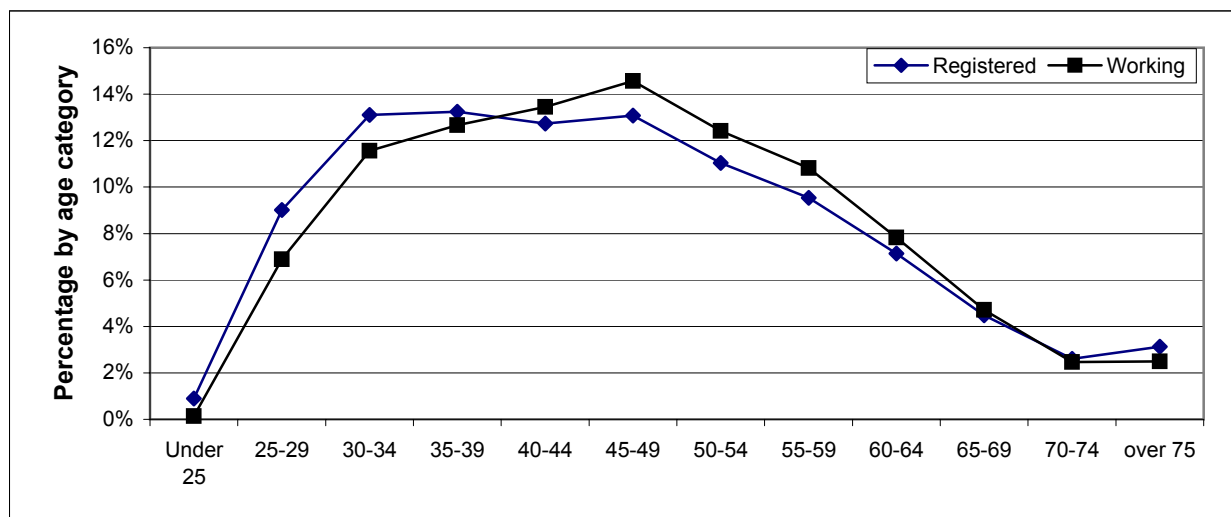
**Table B1.1 Type of registration by sex, all medical practitioners registered in NSW, 2005**

Registration category	No.		%		No.		%		Per cent Female
	Sex unknown	Female	Male	Total					
Full	28	37.8%	7193	84.6%	15092	85.3%	22,313	84.9%	32.2%
Conditional	43	58.1%	850	10.0%	1704	9.6%	2,597	9.9%	32.7%
Non-practicing	3	0.0%	463	5.4%	899	5.1%	1,365	5.2%	33.9%
<b>Total Registrants</b>	<b>74</b>	<b>100.0%</b>	<b>8,506</b>	<b>100.0%</b>	<b>17,695</b>	<b>100.0%</b>	<b>26,275</b>	<b>100.0%</b>	<b>32.4%</b>

**Table B1.2 Age and sex, all medical practitioners registered in NSW, 2005**

Age group	No.		%		No.		%		Per cent Female
	Sex unknown	Female	Male	Total					
Under 25	0	0.0%	128	1.5%	105	0.6%	233	0.9%	54.9%
25-29	16	21.9%	1137	13.6%	1177	6.8%	2330	9.0%	48.8%
30-34	25	34.2%	1469	17.6%	1896	10.9%	3390	13.1%	43.3%
35-39	13	17.8%	1317	15.8%	2094	12.0%	3424	13.2%	38.5%
40-44	11	15.1%	1225	14.7%	2055	11.8%	3291	12.7%	37.2%
45-49	2	2.7%	1158	13.9%	2221	12.7%	3381	13.1%	34.3%
50-54	4	5.5%	804	9.6%	2047	11.7%	2855	11.0%	28.2%
55-59	1	1.4%	472	5.7%	1992	11.4%	2465	9.5%	19.1%
60-64	1	1.4%	301	3.6%	1543	8.9%	1845	7.1%	16.3%
65-69	0	0.0%	147	1.8%	1010	5.8%	1157	4.5%	12.7%
70-74	0	0.0%	90	1.1%	585	3.4%	675	2.6%	13.3%
over 75	0	0.0%	104	1.2%	703	4.0%	807	3.1%	12.9%
<b>Total</b>	<b>73</b>	<b>100.0%</b>	<b>8352</b>	<b>100.0%</b>	<b>17428</b>	<b>100.0%</b>	<b>25853</b>	<b>100.0%</b>	<b>32.3%</b>
<i>Age unknown</i>	1	1.4%	127	1.5%	267	1.5%	395	1.5%	

**Figure B1.1 Comparison of age distribution of all medical practitioners registered in NSW and medical practitioners working in NSW, 2005**



**Table B1.3 Registration actions by age and sex of registrants—new registrations, restorations and renewals, NSW 2005**

Age Group	Sex unknown		Female		Male		Total		Per cent female
	No.	%	No.	%	No.	%	No.	%	
<b>New Registrations</b>									
Under 25	0	0.0%	110	12.9%	94	8.1%	204	10.0%	53.9%
25-29	4	4.3%	360	42.1%	374	32.2%	738	36.3%	48.8%
30-34	7	7.6%	195	22.8%	247	21.2%	449	22.1%	43.4%
35-39	0	0.0%	86	10.0%	189	16.3%	275	13.5%	31.3%
40-44	1	1.1%	50	5.8%	113	9.7%	164	8.1%	30.5%
45-49	0	0.0%	33	3.9%	58	5.0%	91	4.5%	36.3%
50-54	2	2.2%	15	1.8%	38	3.3%	55	2.7%	27.3%
55-59	0	0.0%	5	0.6%	28	2.4%	33	1.6%	15.2%
60-64	0	0.0%	1	0.1%	13	1.1%	14	0.7%	7.1%
65-69	0	0.0%	1	0.1%	7	0.6%	8	0.4%	12.5%
70-74	0	0.0%	0	0.0%	1	0.1%	1	0.0%	0.0%
over 75	0	0.0%	0	0.0%	1	0.1%	1	0.0%	0.0%
<b>Total</b>	<b>92</b>	<b>100.0%</b>	<b>856</b>	<b>100.0%</b>	<b>1163</b>	<b>100.0%</b>	<b>2,033</b>	<b>100.0%</b>	<b>42.1%</b>
<i>Sex unknown</i>	0	0.0%	3	0.3%	3	0.3%	6	0.3%	
<b>Restorations</b>									
Under 25	0	0.0%	0	0.0%	0	0.0%	0	0.0%	0.0%
25-29	0	0.0%	2	6.1%	6	9.1%	8	8.1%	25.0%
30-34	0	0.0%	8	24.2%	10	15.2%	18	18.2%	44.4%
35-39	0	0.0%	4	12.1%	8	12.1%	12	12.1%	33.3%
40-44	0	0.0%	5	15.2%	2	3.0%	7	7.1%	71.4%
45-49	0	0.0%	5	15.2%	6	9.1%	11	11.1%	45.5%
50-54	0	0.0%	2	6.1%	10	15.2%	12	12.1%	16.7%
55-59	0	0.0%	4	12.1%	11	16.7%	15	15.2%	26.7%
60-64	0	0.0%	1	3.0%	4	6.1%	5	5.1%	20.0%
65-69	0	0.0%	1	3.0%	7	10.6%	8	8.1%	12.5%
70-74	0	0.0%	1	3.0%	0	0.0%	1	1.0%	100.0%
over 75	0	0.0%	0	0.0%	2	3.0%	2	2.0%	0.0%
<b>Total</b>	<b>0</b>	<b>0.0%</b>	<b>33</b>	<b>100.0%</b>	<b>66</b>	<b>100.0%</b>	<b>99</b>	<b>100.0%</b>	<b>33.3%</b>
<i>Age unknown</i>	0	0.0%	1	0.0%	0	0.0%	1	1.0%	
<b>Renewals</b>									
Under 25	0	0.0%	18	0.2%	11	0.1%	29	0.1%	62.1%
25-29	12	20.3%	775	10.4%	797	4.9%	1584	6.7%	48.9%
30-34	18	30.5%	1266	17.0%	1639	10.1%	2923	12.3%	43.3%
35-39	13	22.0%	1227	16.4%	1897	11.7%	3137	13.2%	39.1%
40-44	10	16.9%	1170	15.7%	1940	12.0%	3120	13.2%	37.5%
45-49	2	3.4%	1120	15.0%	2157	13.3%	3279	13.8%	34.2%
50-54	2	3.4%	787	10.5%	1999	12.3%	2788	11.8%	28.2%
55-59	1	1.7%	463	6.2%	1953	12.1%	2417	10.2%	19.2%
60-64	1	1.7%	299	4.0%	1526	9.4%	1826	7.7%	16.4%
65-69	0	0.0%	145	1.9%	996	6.1%	1141	4.8%	12.7%
70-74	0	0.0%	89	1.2%	584	3.6%	673	2.8%	13.2%
over 75	0	0.0%	104	1.4%	700	4.3%	804	3.4%	12.9%
<b>Total</b>	<b>59</b>	<b>100.0%</b>	<b>7463</b>	<b>100.0%</b>	<b>16199</b>	<b>100.0%</b>	<b>23,721</b>	<b>100.0%</b>	<b>31.5%</b>
<i>Age unknown</i>	1	1.7%	123	1.6%	264	1.6%	388	1.6%	
<b>Summary — Major Categories</b>									
New Registrants	92	60.5%	859	10.1%	1166	6.6%	2117	8.0%	40.6%
Restorations	0	0.0%	34	0.4%	66	0.4%	100	0.4%	34.0%
Renewals	60	39.5%	7586	89.5%	16463	93.0%	24109	91.6%	31.5%
<i>Unknown</i>	152	100.0%	8479	100.0%	17695	100.0%	26326	100.0%	

**Note**

1 Individual registrants may have multiple or no registration actions recorded during a particular financial year. The summary includes percentages of total number of registrants in the categories above, who had conditional, full or non practicing registration status.

**Table B1.4** Year of first registration in NSW by sex, all medical practitioners registered in NSW, 2005

Calendar year	No.		%		No.		%		Per cent Female
	Sex unknown	Female	Male	Total	Sex unknown	Female	Male	Total	
Before 1940	0	0	2	2	0.0%	0.0%	0.0%	0.0%	0.0%
1940-44	0	8	43	51	0.0%	0.1%	0.2%	0.2%	15.7%
1945-49	0	15	85	100	0.0%	0.2%	0.5%	0.4%	15.0%
1950-54	0	38	267	305	0.0%	0.4%	1.5%	1.2%	12.5%
1955-59	0	61	389	450	0.0%	0.7%	2.2%	1.7%	13.6%
1960-64	0	92	596	688	0.0%	1.1%	3.4%	2.6%	13.4%
1965-69	0	181	969	1,150	0.0%	2.1%	5.5%	4.4%	15.7%
1970-74	0	268	1405	1,673	0.0%	3.2%	7.9%	6.4%	16.0%
1975-79	0	758	2456	3,214	0.0%	8.9%	13.9%	12.2%	23.6%
1980-84	0	871	2020	2,891	0.0%	10.3%	11.4%	11.0%	30.1%
1985-89	0	973	1867	2,840	0.0%	11.5%	10.6%	10.8%	34.3%
1990-94	1	955	1532	2,488	1.4%	11.3%	8.7%	9.5%	38.4%
1995-99	0	1450	2096	3,546	0.0%	17.1%	11.8%	13.5%	40.9%
2000 and after	73	2809	3968	6,850	98.6%	33.1%	22.4%	26.1%	41.0%
<b>Total Registrants</b>	<b>74</b>	<b>8479</b>	<b>17695</b>	<b>26,248</b>	<b>100.0%</b>	<b>100.0%</b>	<b>100.0%</b>	<b>100.0%</b>	<b>32.3%</b>

**Table B1.5** Working status of all respondents by sex, NSW Medical Labour Force Survey, 2005

Working status	No.		%		No.		%		Per cent female
	Sex unknown	Female	Male	Total	Sex unknown	Female	Male	Total	
<b>Working in medicine</b>									
Only in NSW	11	4916	10125	15052	57.9%	80.2%	77.6%	78.4%	32.7%
Mainly outside NSW	1	129	562	692	5.3%	2.1%	4.3%	3.6%	18.7%
Mainly in NSW	3	121	410	534	15.8%	2.0%	3.1%	2.8%	22.8%
Only outside NSW	3	191	618	812	15.8%	3.1%	4.7%	4.2%	23.6%
Overseas	0	324	719	1043	0.0%	5.3%	5.5%	5.4%	31.1%
On extended leave	0	104	31	135	0.0%	1.7%	0.2%	0.7%	77.0%
<b>Not working in medicine</b>									
Retired	0	131	417	548	0.0%	2.1%	3.2%	2.9%	23.9%
Currently not working	1	140	88	229	5.3%	2.3%	0.7%	1.2%	61.4%
Working, but not in medicine	0	70	84	154	0.0%	1.1%	0.6%	0.8%	45.5%
<b>Total survey respondents</b>	<b>19</b>	<b>6126</b>	<b>13054</b>	<b>19199</b>	<b>100.0%</b>	<b>100.0%</b>	<b>100.0%</b>	<b>100.0%</b>	<b>31.9%</b>

**Table B1.6 Working status of all respondents, NSW Medical Labour Force Survey, 1995 to 2005**

Working status	1995	1996	1997	1998	1999	2000	2002	2003	2004	2005
<b>Survey respondents</b>										
<b>Working in medicine</b>										
In NSW	14,158	14,866	15,141	15,374	15,119	15,445	13,351	14,374	15,890	15,566
Mainly in NSW	463	442	433	478	507	483	460	610	732	728
Mainly outside NSW	585	575	583	604	689	642	427	455	508	558
Outside NSW	1,082	1,181	967	1,055	1,090	1,016	1,002	825	874	899
Overseas	958	969	1,000	1,034	1,001	1,075	1,070	1,004	1,105	1,120
On extended leave	118	130	137	134	142	118	135	141	128	144
<b>Not working in medicine</b>										
Working outside medicine	148	159	172	156	174	178	166	180	895	950
Not working	1,142	1,178	1,113	358	352	329	280	273	283	265
Retired	—	—	—	987	1,116	1,330	721	886	178	169
<b>Total respondents</b>	<b>18,654</b>	<b>19,500</b>	<b>19,546</b>	<b>20,180</b>	<b>20,190</b>	<b>20,616</b>	<b>17,612</b>	<b>18,748</b>	<b>20,593</b>	<b>20,399</b>
<b>Total registrants</b>	<b>22,102</b>	<b>22,770</b>	<b>22,844</b>	<b>23,854</b>	<b>24,407</b>	<b>24,735</b>	<b>25,126</b>	<b>24,708</b>	<b>27,908</b>	<b>26,248</b>
<b>Registrants excluding temporary registrants</b>	<b>24,143</b>									
<b>Percentage Distribution</b>										
<b>Working in medicine</b>										
In NSW	75.9%	76.2%	77.5%	76.2%	74.9%	74.9%	75.8%	76.7%	77.2%	76.3%
Mainly in NSW	2.5%	2.3%	2.2%	2.4%	2.5%	2.3%	2.6%	3.3%	3.6%	3.6%
Mainly outside NSW	3.1%	2.9%	3.0%	3.0%	3.4%	3.1%	2.4%	2.4%	2.5%	2.7%
Outside NSW	5.8%	6.1%	4.9%	5.2%	5.4%	4.9%	5.7%	4.4%	4.2%	4.4%
Overseas	5.1%	5.0%	5.1%	5.1%	5.0%	5.2%	6.1%	5.4%	5.4%	5.5%
On extended leave	0.6%	0.7%	0.7%	0.7%	0.7%	0.6%	0.8%	0.8%	0.6%	0.7%
<b>Not working in medicine</b>										
Working outside medicine	0.8%	0.8%	0.9%	0.8%	0.9%	0.9%	0.9%	1.0%	4.3%	4.7%
Not working	6.1%	6.0%	5.7%	1.8%	1.7%	1.6%	1.6%	1.5%	1.4%	1.3%
Retired	—	—	—	4.9%	5.5%	6.5%	4.1%	4.7%	0.9%	0.8%
<b>Total respondents</b>	<b>100.0%</b>	<b>100.0%</b>	<b>100.0%</b>	<b>100.0%</b>	<b>100.0%</b>	<b>100.0%</b>	<b>100.0%</b>	<b>100.0%</b>	<b>100.0%</b>	<b>100.0%</b>
<b>Percentage of total registrants</b>	<b>84.4%</b>	<b>85.6%</b>	<b>85.6%</b>	<b>84.6%</b>	<b>82.7%</b>	<b>83.3%</b>	<b>70.1%</b>	<b>75.9%</b>	<b>73.8%</b>	<b>77.7%</b>

**Table B1.7 New registrants in NSW by sex, 1995 to 2005**

Sex	1995	1996	1997	1998	1999	2000	2002	2003	2004	2005
Female	480	567	292	386	253	382	367	548	773	859
Male	776	875	554	552	434	592	608	717	1,102	1,166
<b>Total</b>	<b>1,256</b>	<b>1,442</b>	<b>846</b>	<b>938</b>	<b>687</b>	<b>974</b>	<b>975</b>	<b>1,265</b>	<b>1,875</b>	<b>2,025</b>
<i>Unknown Sex</i>							3	93		
Female	38.2%	39.3%	34.5%	41.2%	36.8%	39.2%	37.6%	43.3%	41.2%	42.4%
Male	61.8%	60.7%	65.5%	58.8%	63.2%	60.8%	62.4%	56.7%	58.8%	57.6%
<b>Total</b>	<b>100.0%</b>	<b>100.0%</b>	<b>100.0%</b>	<b>100.0%</b>	<b>100.0%</b>	<b>100.0%</b>	<b>100.0%</b>	<b>100.0%</b>	<b>100.0%</b>	<b>100.0%</b>

**Notes**

1 The 1993 reporting period was from December 1992 to March 1994. This has affected the number of new registrants reported in 1993.

2 Changes to the Board data file resulted in a variation in the method of counting new registrations in 2003

**Table B1.7** Employment setting of all jobs by sex, primary care medical practitioners working in NSW, 2005

Employment setting	No.	%	No.	%	No.	%	No.	%	Per cent female
	Sex unknown		Female		Male		Total		
<b>Public sector</b>									
Ambulatory centre, day surgery, community health centre, outpatient clinic	5	2.1%	98	3.1%	121	2.0%	224	2.4%	44.7%
Aboriginal health service	3	1.3%	45	1.4%	37	0.6%	85	0.9%	54.9%
Hospital, including psychiatric hospital	27	11.5%	158	5.1%	486	8.0%	671	7.1%	24.5%
Other residential health facility	6	2.6%	42	1.3%	93	1.5%	141	1.5%	31.1%
Tertiary education institution	4	1.7%	51	1.6%	44	0.7%	99	1.0%	53.7%
Defence forces	4	1.7%	19	0.6%	46	0.8%	69	0.7%	29.2%
Government department/agency	3	1.3%	21	0.7%	30	0.5%	54	0.6%	41.2%
Other	3	1.3%	51	1.6%	58	1.0%	112	1.2%	46.8%
<b>Total public sector</b>	<b>55</b>	<b>23.5%</b>	<b>485</b>	<b>15.5%</b>	<b>915</b>	<b>15.0%</b>	<b>1455</b>	<b>15.4%</b>	<b>34.6%</b>
<b>Private sector</b>									
Private rooms/surgery	125	53.4%	1930	61.9%	3592	59.0%	5647	59.8%	35.0%
Ambulatory centre, day surgery, community health centre, outpatient clinic	6	2.6%	53	1.7%	108	1.8%	167	1.8%	32.9%
24 hour/other medical centre	3	1.3%	88	2.8%	229	3.8%	320	3.4%	27.8%
Aboriginal health service	1	0.4%	8	0.3%	22	0.4%	31	0.3%	0.0%
Hospital, including psychiatric hospital	9	3.8%	123	3.9%	337	5.5%	469	5.0%	26.7%
Other residential health facility	9	3.8%	146	4.7%	354	5.8%	509	5.4%	29.2%
Tertiary education institution	15	6.4%	115	3.7%	177	2.9%	307	3.3%	39.4%
Other	11	4.7%	172	5.5%	356	5.8%	539	5.7%	32.6%
<b>Total private sector</b>	<b>179</b>	<b>76.5%</b>	<b>2635</b>	<b>84.5%</b>	<b>5175</b>	<b>85.0%</b>	<b>7989</b>	<b>84.6%</b>	<b>33.7%</b>
<b>Total</b>	<b>234</b>	<b>100.0%</b>	<b>3120</b>	<b>100.0%</b>	<b>6090</b>	<b>100.0%</b>	<b>9444</b>	<b>100.0%</b>	<b>33.9%</b>
<i>Non-response:</i>	7		25		49		81		
	<b>No.</b>	<b>% of total</b>	<b>No.</b>	<b>% of total</b>	<b>No.</b>	<b>% of total</b>	<b>No.</b>	<b>% of total</b>	
<b>Total no. of respondents</b>	<b>169</b>	<b>100.0%</b>	<b>2346</b>	<b>100.0%</b>	<b>4237</b>	<b>100.0%</b>	<b>6752</b>	<b>100.0%</b>	<b>35.6%</b>
<b>Total respondents public sector</b>	<b>45</b>	<b>26.6%</b>	<b>395</b>	<b>16.8%</b>	<b>735</b>	<b>17.3%</b>	<b>1175</b>	<b>17.4%</b>	<b>35.0%</b>
<b>Total respondents private sector</b>	<b>136</b>	<b>80.5%</b>	<b>2076</b>	<b>88.5%</b>	<b>3898</b>	<b>92.0%</b>	<b>6110</b>	<b>90.5%</b>	<b>34.8%</b>

#### Notes

- 1 Data has been estimated from Question 8 of the survey form, "How many hours over the last 4 weeks did you work in each of the following settings?". Responses have been added for up to three settings, and therefore are multiple responses. The responses do not equate to jobs or positions, as a respondent may work in more than one location in a setting, but will only show total hours in that setting.
- 2 Percentages by setting relate to total settings reported, not respondents
- 3 Respondents may report both public and private settings

**Table B1.8 Employment setting of all jobs by sex, specialist medical practitioners working in NSW, 2005**

Employment setting	No.		%		No.		%		Per cent female
	Sex unknown		Female		Male		Total		
<b>Public sector</b>									
Ambulatory centre, day surgery, community health centre, outpatient clinic	23	7.1%	225	9.9%	599	6.1%	847	6.8%	27.3%
Aboriginal health service	1	0.3%	10	0.4%	31	0.3%	42	0.3%	24.4%
Hospital, including psychiatric hospital	106	32.9%	759	33.3%	2,892	29.4%	3757	30.2%	20.8%
Other residential health facility	1	0.3%	15	0.7%	37	0.4%	53	0.4%	28.8%
Tertiary education institution	10	3.1%	89	3.9%	290	3.0%	389	3.1%	23.5%
Defence forces	5	1.6%	5	0.2%	52	0.5%	62	0.5%	8.8%
Government department/agency	2	0.6%	54	2.4%	101	1.0%	157	1.3%	34.8%
Other	6	1.9%	42	1.8%	168	1.7%	216	1.7%	20.0%
<b>Total public sector</b>	<b>154</b>	<b>47.8%</b>	<b>1,199</b>	<b>52.6%</b>	<b>4,170</b>	<b>42.4%</b>	<b>5523</b>	<b>44.4%</b>	<b>22.3%</b>
<b>Private sector</b>									
Private rooms/surgery	81	25.2%	556	24.4%	2,828	28.8%	3465	27.9%	16.4%
Ambulatory centre, day surgery, community health centre, outpatient clinic	15	4.7%	102	4.5%	460	4.7%	577	4.6%	18.1%
24 hour/other medical centre	1	0.3%	2	0.1%	33	0.3%	36	0.3%	5.7%
Aboriginal health service	1	0.3%	2	0.1%	15	0.2%	18	0.1%	0.0%
Hospital, including psychiatric hospital	48	14.9%	261	11.5%	1,715	17.5%	2024	16.3%	13.2%
Other residential health facility	3	0.9%	12	0.5%	30	0.3%	45	0.4%	28.6%
Tertiary education institution	7	2.2%	61	2.7%	207	2.1%	275	2.2%	22.8%
Other	12	3.7%	84	3.7%	368	3.7%	464	3.7%	18.6%
<b>Total private sector</b>	<b>168</b>	<b>52.2%</b>	<b>1,080</b>	<b>47.4%</b>	<b>5,656</b>	<b>57.6%</b>	<b>6904</b>	<b>55.6%</b>	<b>16.0%</b>
<b>Total</b>	<b>322</b>	<b>100.0%</b>	<b>2279</b>	<b>100.0%</b>	<b>9826.0</b>	<b>100.0%</b>	<b>12427</b>	<b>100.0%</b>	<b>18.8%</b>
<i>Non-response:</i>	9		51		171		231		
		% of total	No.	% of total	No.	% of total	No.	% of total	
<b>Total no. of respondents</b>	<b>193</b>	<b>100.0%</b>	<b>1375</b>	<b>100.0%</b>	<b>5163</b>	<b>100.0%</b>	<b>6731</b>	<b>100.0%</b>	<b>21.0%</b>
<b>Total respondents public sector</b>	<b>119</b>	<b>61.7%</b>	<b>945</b>	<b>68.7%</b>	<b>3295</b>	<b>63.8%</b>	<b>4359</b>	<b>64.8%</b>	<b>22.3%</b>
<b>Total respondents private sector</b>	<b>113</b>	<b>58.5%</b>	<b>760</b>	<b>55.3%</b>	<b>3646</b>	<b>70.6%</b>	<b>4519</b>	<b>67.1%</b>	<b>17.2%</b>

**Notes**

- <sup>1</sup> Data has been estimated from Question 8 of the survey form, "How many hours over the last 4 weeks did you work in each of the following settings?". Responses have been added for up to three settings, and therefore are multiple responses. The responses do not equate to jobs or positions, as a respondent may work in more than one location in a setting, but will only show total hours in that setting.
- <sup>2</sup> Percentages by setting relate to total settings reported, not respondents
- <sup>3</sup> Respondents may report both public and private settings

**Table B1.9 Employment setting of all jobs by sex, specialists in training working in NSW, 2005**

Employment setting	No.		%		No.		%		Per cent female
	Sex unknown		Female		Male		Total		
<b>Public sector</b>									
Ambulatory centre, day surgery, community health centre, outpatient clinic	9	9.9%	102	12.9%	105	8.6%	216	9.4%	49.3%
Aboriginal health service	0	0.0%	10	1.3%	5	0.4%	15	0.7%	66.7%
Hospital, including psychiatric hospital	63	69.2%	685	86.6%	893	73.0%	1641	71.6%	43.4%
Other residential health facility	0	0.0%	6	0.8%	3	0.2%	9	0.4%	66.7%
Tertiary education institution	1	1.1%	19	2.4%	34	2.8%	54	2.4%	35.8%
Defence forces	0	0.0%	2	0.3%	5	0.4%	7	0.3%	28.6%
Government department/agency	1	1.1%	16	2.0%	13	1.1%	30	1.3%	55.2%
Other	2	2.2%	14	1.8%	9	0.7%	25	1.1%	60.9%
<b>Total public sector</b>	<b>76</b>	<b>83.5%</b>	<b>719</b>	<b>90.9%</b>	<b>1,067</b>	<b>87.2%</b>	<b>1997</b>	<b>87.1%</b>	<b>40.3%</b>
<b>Private sector</b>									
Private rooms/surgery	5	5.5%	36	4.6%	41	3.4%	82	3.6%	46.8%
Ambulatory centre, day surgery, community health centre, outpatient clinic	1	1.1%	9	1.1%	10	0.8%	20	0.9%	47.4%
24 hour/other medical centre	1	1.1%	4	0.5%	2	0.2%	7	0.3%	66.7%
Aboriginal health service	1	1.1%	2	0.3%	1	0.1%	4	0.2%	0.0%
Hospital, including psychiatric hospital	3	3.3%	29	3.7%	47	3.8%	79	3.4%	38.2%
Other residential health facility	1	1.1%	2	0.3%	2	0.2%	5	0.2%	50.0%
Tertiary education institution	3	3.3%	33	4.2%	33	2.7%	69	3.0%	50.0%
Other	0	0.0%	10	1.3%	20	1.6%	30	1.3%	33.3%
<b>Total private sector</b>	<b>15</b>	<b>16.5%</b>	<b>72</b>	<b>9.1%</b>	<b>156</b>	<b>12.8%</b>	<b>296</b>	<b>12.9%</b>	<b>31.6%</b>
<b>Total</b>	<b>91</b>	<b>100.0%</b>	<b>791</b>	<b>100.0%</b>	<b>1223</b>	<b>100.0%</b>	<b>2293</b>	<b>100.0%</b>	<b>39.3%</b>
<i>Non-response:</i>	3		38		48		89		
		<b>% of total</b>	<b>No.</b>	<b>% of total</b>	<b>No.</b>	<b>% of total</b>	<b>No.</b>	<b>% of total</b>	
<b>Total no. of respondents</b>	<b>79</b>	<b>100.0%</b>	<b>809</b>	<b>100.0%</b>	<b>1007</b>	<b>100.0%</b>	<b>1895</b>	<b>100.0%</b>	<b>44.5%</b>
<b>Total respondents public sector</b>	<b>69</b>	<b>87.3%</b>	<b>731</b>	<b>90.4%</b>	<b>936</b>	<b>92.9%</b>	<b>1736</b>	<b>91.6%</b>	<b>43.9%</b>
<b>Total respondents private sector</b>	<b>11</b>	<b>13.9%</b>	<b>92</b>	<b>11.4%</b>	<b>124</b>	<b>12.3%</b>	<b>227</b>	<b>12.0%</b>	<b>42.6%</b>

**Notes**

- 1 Data has been estimated from Question 8 of the survey form, "How many hours over the last 4 weeks did you work in each of the following settings?". Responses have been added for up to three settings, and therefore are multiple responses. The responses do not equate to jobs or positions, as a respondent may work in more than one location in a setting, but will only show total hours in that setting.
- 2 Percentages by setting relate to total settings reported, not respondents
- 3 Respondents may report both public and private settings

**Table B1.10 Employment setting of all jobs by sex, non-specialist hospital salaried medical practitioners working in NSW, 2005**

Employment setting	No.		%		No.		%		Per cent female
	Sex unknown	Female	Male	Total					
<b>Public sector</b>									
Ambulatory centre, day surgery, community health centre, outpatient clinic	5	4.2%	79	10.3%	45	4.5%	129	6.0%	63.7%
Aboriginal health service	0	0.0%	5	0.7%	3	0.3%	8	0.4%	62.5%
Hospital, including psychiatric hospital	81	68.6%	667	87.3%	735	73.9%	1483	69.3%	47.6%
Other residential health facility	1	0.8%	7	0.9%	7	0.7%	15	0.7%	50.0%
Tertiary education institution	3	2.5%	14	1.8%	17	1.7%	34	1.6%	45.2%
Defence forces	0	0.0%	2	0.3%	7	0.7%	9	0.4%	22.2%
Government department/agency	0	0.0%	5	0.7%	9	0.9%	14	0.7%	35.7%
Other	2	1.7%	16	2.1%	13	1.3%	31	1.4%	55.2%
<b>Total public sector</b>	<b>92</b>	<b>78.0%</b>	<b>665</b>	<b>87.0%</b>	<b>783</b>	<b>78.8%</b>	<b>1723</b>	<b>80.5%</b>	<b>45.9%</b>
<b>Private sector</b>									
Private rooms/surgery	5	4.2%	32	4.2%	73	7.3%	110	5.1%	30.5%
Ambulatory centre, day surgery, community health centre, outpatient clinic	1	0.8%	10	1.3%	17	1.7%	28	1.3%	37.0%
24 hour/other medical centre	0	0.0%	3	0.4%	3	0.3%	6	0.3%	50.0%
Aboriginal health service	0	0.0%	1	0.1%	2	0.2%	3	0.1%	33.3%
Hospital, including psychiatric hospital	9	7.6%	44	5.8%	110	11.1%	163	7.6%	28.6%
Other residential health facility	0	0.0%	3	0.4%	6	0.6%	9	0.4%	33.3%
Tertiary education institution	10	8.5%	40	5.2%	30	3.0%	80	3.7%	57.1%
Other	1	0.8%	5	0.7%	12	1.2%	18	0.8%	29.4%
<b>Total private sector</b>	<b>26</b>	<b>22.0%</b>	<b>99</b>	<b>13.0%</b>	<b>211</b>	<b>21.2%</b>	<b>417</b>	<b>19.5%</b>	<b>31.9%</b>
<b>Total</b>	<b>118</b>	<b>100.0%</b>	<b>764</b>	<b>100.0%</b>	<b>994</b>	<b>100.0%</b>	<b>2140</b>	<b>100.0%</b>	<b>43.5%</b>
<i>Non-response:</i>	7		49		33		89		
		<b>% of total</b>	<b>No.</b>	<b>% of total</b>	<b>No.</b>	<b>% of total</b>	<b>No.</b>	<b>% of total</b>	
<b>Total no. of respondents</b>	<b>96</b>	<b>100.0%</b>	<b>754</b>	<b>100.0%</b>	<b>838</b>	<b>100.0%</b>	<b>1688</b>	<b>100.0%</b>	<b>47.4%</b>
<b>Total respondents public sector</b>	<b>84</b>	<b>87.5%</b>	<b>708</b>	<b>93.9%</b>	<b>775</b>	<b>92.5%</b>	<b>1567</b>	<b>92.8%</b>	<b>47.7%</b>
<b>Total respondents private sector</b>	<b>22</b>	<b>22.9%</b>	<b>116</b>	<b>15.4%</b>	<b>199</b>	<b>23.7%</b>	<b>337</b>	<b>20.0%</b>	<b>36.8%</b>

**Notes**

<sup>1</sup> Data has been estimated from Question 8 of the survey form, "How many hours over the last 4 weeks did you work in each of the following settings?". Responses have been added for up to three settings, and therefore are multiple responses. The responses do not equate to jobs or positions, as a respondent may work in more than one location in a setting, but will only show total hours in that setting.

<sup>2</sup> Percentages by setting relate to total settings reported, not respondents

<sup>3</sup> Respondents may report both public and private settings

**Table B1.11 Employment setting of all jobs by sex, FTE primary care medical practitioners working in NSW, 2005**

Employment setting	No.	%	No.	%	No.	%	No.	%	Per cent female
	Unknown sex		Female		Male		Total		
<b>Public sector</b>									
Ambulatory centre, day surgery, community health centre, outpatient clinic	2.6	1.6%	42.1	2.3%	53.9	1.1%	98.6	1.5%	43.8%
Aboriginal health service	0.5	0.3%	21.6	1.2%	20.1	0.4%	42.2	0.6%	51.8%
Hospital, including psychiatric hospital	14.0	8.9%	52.2	2.8%	192.5	4.0%	258.7	3.8%	21.3%
Other residential health facility	0.7	0.4%	7.3	0.4%	11.1	0.2%	19.1	0.3%	39.7%
Tertiary education institution	0.9	0.6%	20.4	1.1%	23.5	0.5%	44.9	0.7%	46.5%
Defence forces	3.0	1.9%	14.8	0.8%	33.6	0.7%	51.4	0.8%	30.5%
Government department/agency	2.5	1.6%	8.2	0.4%	19.9	0.4%	30.6	0.5%	29.2%
Other	1.8	1.1%	17.5	0.9%	21.5	0.5%	40.8	0.6%	44.9%
<b>Total public sector</b>	<b>25.8</b>	<b>16.4%</b>	<b>184.2</b>	<b>9.9%</b>	<b>376.2</b>	<b>7.9%</b>	<b>586.2</b>	<b>8.6%</b>	<b>32.9%</b>
<b>Private sector</b>									
Private rooms/surgery	114.6	72.8%	1438.5	77.2%	3721.4	78.1%	5,274.5	77.7%	27.9%
Ambulatory centre, day surgery, community health centre, outpatient clinic	3.9	2.5%	15.1	0.8%	48.1	1.0%	67.1	1.0%	23.9%
24 hour/other medical centre	1.9	1.2%	63.6	3.4%	175.2	3.7%	240.7	3.5%	26.6%
Aboriginal health service	0.4	0.3%	2.1	0.1%	9.4	0.2%	11.9	0.2%	0.0%
Hospital, including psychiatric hospital	2.7	1.7%	34.0	1.8%	104.3	2.2%	140.9	2.1%	24.6%
Other residential health facility	0.7	0.4%	22.0	1.2%	53.6	1.1%	76.2	1.1%	29.1%
Tertiary education institution	0.5	0.3%	10.2	0.5%	13.3	0.3%	23.9	0.4%	43.4%
Other	6.8	4.3%	94.5	5.1%	264.1	5.5%	365.4	5.4%	26.3%
<b>Total private sector</b>	<b>131.5</b>	<b>83.6%</b>	<b>1679.9</b>	<b>90.1%</b>	<b>4389.3</b>	<b>92.1%</b>	<b>6,200.6</b>	<b>91.4%</b>	<b>27.7%</b>
<b>Total</b>	<b>157.3</b>	<b>100.0%</b>	<b>1864.1</b>	<b>100.0%</b>	<b>4765.5</b>	<b>100.0%</b>	<b>6,786.8</b>	<b>100.0%</b>	<b>28.1%</b>
<i>Non-response:</i>	7		25		49		81		
		% of total	No.	% of total	No.	% of total	No.	% of total	
<b>Total no. of respondents</b>	<b>169</b>	<b>100.0%</b>	<b>2346</b>	<b>100.0%</b>	<b>4237</b>	<b>100.0%</b>	<b>6752</b>	<b>100.0%</b>	<b>35.6%</b>
<b>Total respondents public sector</b>	<b>45</b>	<b>26.6%</b>	<b>395</b>	<b>16.8%</b>	<b>735</b>	<b>17.3%</b>	<b>1175</b>	<b>17.4%</b>	<b>35.0%</b>
<b>Total respondents private sector</b>	<b>136</b>	<b>80.5%</b>	<b>2076</b>	<b>88.5%</b>	<b>3898</b>	<b>92.0%</b>	<b>6110</b>	<b>90.5%</b>	<b>34.8%</b>
<b>FTE ratio all respondents</b>	<b>0.9307</b>		<b>0.7946</b>		<b>1.1247</b>		<b>1.0052</b>		
<b>FTE ratio respondents public sector</b>	<b>0.5738</b>		<b>0.4663</b>		<b>0.5119</b>		<b>0.4989</b>		
<b>FTE ratio respondents private sector</b>	<b>0.9667</b>		<b>0.8092</b>		<b>1.1260</b>		<b>1.0148</b>		

**Notes**

- 1 Data has been estimated from Question 8 of the survey form, "How many hours over the last 4 weeks did you work in each of the following settings?". Responses have been added for up to three settings, and therefore are multiple responses. The responses do not equate to jobs or positions, as a respondent may work in more than one location in a setting, but will only show total hours in that setting.
- 2 Percentages by setting relate to total settings reported, not respondents
- 3 Respondents may report both public and private settings
- 4 FTE calculated by dividing hours worked by 40 hours per week

**Table B1.12 Employment setting of all jobs by sex, FTE specialist medical practitioners working in NSW, 2005**

Employment setting	No.	%	No.	%	No.	%	No.	%	Per cent female
	Unknown sex		Female		Male		Total		
<b>Public sector</b>									
Ambulatory centre, day surgery, community health centre, outpatient clinic	7.9	4.2%	86.5	6.7%	206.8	4.2%	301.2	4.1%	29.5%
Aboriginal health service	0.5	0.3%	2.2	0.2%	10.0	0.2%	12.7	0.2%	18.0%
Hospital, including psychiatric hospital	82.0	43.2%	544.7	42.1%	1961.4	39.5%	2,588.1	35.6%	21.7%
Other residential health facility	0.0	0.0%	5.4	0.4%	8.8	0.2%	14.2	0.2%	37.9%
Tertiary education institution	4.7	2.5%	43.7	3.4%	138.2	2.8%	186.5	2.6%	24.0%
Defence forces	1.4	0.7%	1.0	0.1%	11.7	0.2%	14.0	0.2%	7.7%
Government department/agency	0.5	0.3%	38.9	3.0%	78.0	1.6%	117.4	1.6%	33.3%
Other	3.2	1.7%	24.4	1.9%	92.3	1.9%	119.9	1.6%	20.9%
<b>Total public sector</b>	<b>100.1</b>	<b>52.8%</b>	<b>746.7</b>	<b>57.7%</b>	<b>2507.2</b>	<b>50.5%</b>	<b>3,354.0</b>	<b>46.1%</b>	<b>22.9%</b>
<b>Private sector</b>									
Private rooms/surgery	56.3	29.7%	345.6	26.7%	2101.5	42.3%	2,503.4	34.4%	14.1%
Ambulatory centre, day surgery, community health centre, outpatient clinic	3.4	1.8%	31.6	2.4%	141.8	2.9%	176.8	2.4%	18.2%
24 hour/other medical centre	0.0	0.0%	0.2	0.0%	13.5	0.3%	13.7	0.2%	1.3%
Aboriginal health service	0.7	0.4%	1.4	0.1%	2.2	0.0%	4.3	0.1%	0.0%
Hospital, including psychiatric hospital	19.6	10.3%	102.6	7.9%	727.7	14.7%	849.8	11.7%	12.4%
Other residential health facility	0.9	0.4%	2.4	0.2%	8.6	0.2%	11.8	0.2%	21.9%
Tertiary education institution	0.3	0.1%	9.4	0.7%	25.3	0.5%	35.0	0.5%	27.2%
Other	8.5	4.5%	54.9	4.2%	257.5	5.2%	320.9	4.4%	17.6%
<b>Total private sector</b>	<b>89.6</b>	<b>47.2%</b>	<b>548.1</b>	<b>42.3%</b>	<b>2863.4</b>	<b>57.7%</b>	<b>3,915.6</b>	<b>53.9%</b>	<b>16.1%</b>
<b>Total</b>	<b>189.7</b>	<b>100.0%</b>	<b>1294.7</b>	<b>100.0%</b>	<b>4962.8</b>	<b>108.2%</b>	<b>7,269.6</b>	<b>100.0%</b>	<b>20.7%</b>
<i>Non-response:</i>	9		51		171		231		
		% of total	No.	% of total	No.	% of total	No.	% of total	
<b>Total no. of respondents</b>	<b>193</b>	<b>100.0%</b>	<b>1375</b>	<b>100.0%</b>	<b>5163</b>	<b>100.0%</b>	<b>6731</b>	<b>100.0%</b>	<b>21.0%</b>
<b>Total respondents public sector</b>	<b>119</b>	<b>61.7%</b>	<b>945</b>	<b>68.7%</b>	<b>3295</b>	<b>63.8%</b>	<b>4359</b>	<b>64.8%</b>	<b>22.3%</b>
<b>Total respondents private sector</b>	<b>113</b>	<b>58.5%</b>	<b>760</b>	<b>55.3%</b>	<b>3646</b>	<b>70.6%</b>	<b>4519</b>	<b>67.1%</b>	<b>17.2%</b>
<b>FTE ratio all respondents</b>	<b>0.9828</b>		<b>0.9416</b>		<b>1.2954</b>		<b>1.0800</b>		
<b>FTE ratio respondents public sector</b>	<b>0.8413</b>		<b>0.7901</b>		<b>0.8062</b>		<b>0.7694</b>		
<b>FTE ratio respondents private sector</b>	<b>0.7927</b>		<b>0.7212</b>		<b>0.9766</b>		<b>0.8665</b>		

**Notes**

<sup>1</sup> Data has been estimated from Question 8 of the survey form, "How many hours over the last 4 weeks did you work in each of the following settings?". Responses have been added for up to three settings, and therefore are multiple responses. The responses do not equate to jobs or positions, as a respondent may work in more than one location in a setting, but will only show total hours in that setting.

<sup>2</sup> Percentages by setting relate to total settings reported, not respondents

<sup>3</sup> Respondents may report both public and private settings

<sup>4</sup> FTE calculated by dividing hours worked by 40 hours per week

Table B1.13 Employment setting of all jobs by sex, FTE specialists in training working in NSW, 2005

Employment setting	No.		%		No.		%		Per cent female
	Unknown sex		Female		Male		Total		
<b>Public sector</b>									
Ambulatory centre, day surgery, community health centre, outpatient clinic	3.7	4.1%	41.1	4.5%	42.2	3.4%	86.9	3.9%	49.4%
Aboriginal health service	0.0	0.0%	3.9	0.4%	3.2	0.3%	7.1	0.3%	55.3%
Hospital, including psychiatric hospital	77.3	86.1%	769.6	85.2%	1083.4	86.5%	1,930.3	85.9%	41.5%
Other residential health facility	0.0	0.0%	2.1	0.2%	2.0	0.2%	4.1	0.2%	51.8%
Tertiary education institution	1.5	1.7%	11.1	1.2%	24.9	2.0%	37.5	1.7%	30.9%
Defence forces	0.0	0.0%	1.6	0.2%	2.3	0.2%	3.9	0.2%	40.4%
Government department/agency	1.0	1.1%	13.4	1.5%	14.0	1.1%	28.4	1.3%	48.8%
Other	0.8	0.9%	9.8	1.1%	8.3	0.7%	18.9	0.8%	54.1%
<b>Total public sector</b>	<b>84.3</b>	<b>93.9%</b>	<b>852.5</b>	<b>94.4%</b>	<b>1180.3</b>	<b>94.2%</b>	<b>2,117.1</b>	<b>94.2%</b>	<b>41.9%</b>
<b>Private sector</b>									
Private rooms/surgery	1.6	1.8%	20.2	2.2%	22.7	1.8%	44.5	2.0%	47.1%
Ambulatory centre, day surgery, community health centre, outpatient clinic	0.3	0.3%	3.5	0.4%	3.7	0.3%	7.5	0.3%	49.0%
24 hour/other medical centre	0.3	0.3%	1.5	0.2%	0.4	0.0%	2.1	0.1%	78.7%
Aboriginal health service	0.3	0.3%	0.3	0.0%	0.2	0.0%	0.7	0.0%	0.0%
Hospital, including psychiatric hospital	2.6	2.8%	17.7	2.0%	29.8	2.4%	50.0	2.2%	37.2%
Other residential health facility	0.3	0.3%	0.1	0.0%	0.5	0.0%	0.8	0.0%	9.1%
Tertiary education institution	0.3	0.3%	1.5	0.2%	2.3	0.2%	4.1	0.2%	40.3%
Other	0.0	0.0%	6.2	0.7%	13.3	1.1%	19.5	0.9%	32.0%
<b>Total private sector</b>	<b>5.5</b>	<b>6.1%</b>	<b>51.0</b>	<b>5.6%</b>	<b>72.7</b>	<b>5.8%</b>	<b>129.2</b>	<b>5.8%</b>	<b>41.2%</b>
<b>Total</b>	<b>89.8</b>	<b>100.0%</b>	<b>903.5</b>	<b>100.0%</b>	<b>1253.0</b>	<b>100.0%</b>	<b>2,246.3</b>	<b>100.0%</b>	<b>41.9%</b>
<i>Non-response:</i>	3		38		48		89		
		<b>% of total</b>	<b>No.</b>	<b>% of total</b>	<b>No.</b>	<b>% of total</b>	<b>No.</b>	<b>% of total</b>	
<b>Total no. of respondents</b>	<b>79</b>	<b>100.0%</b>	<b>809</b>	<b>100.0%</b>	<b>1007</b>	<b>100.0%</b>	<b>1895</b>	<b>100.0%</b>	<b>44.5%</b>
<b>Total respondents public sector</b>	<b>69</b>	<b>87.3%</b>	<b>731</b>	<b>90.4%</b>	<b>936</b>	<b>92.9%</b>	<b>1736</b>	<b>91.6%</b>	<b>43.9%</b>
<b>Total respondents private sector</b>	<b>11</b>	<b>13.9%</b>	<b>92</b>	<b>11.4%</b>	<b>124</b>	<b>12.3%</b>	<b>227</b>	<b>12.0%</b>	<b>42.6%</b>
<b>FTE ratio all respondents</b>	<b>1.1363</b>		<b>1.1168</b>		<b>1.2443</b>		<b>1.1854</b>		
<b>FTE ratio respondents public sector</b>	<b>1.2216</b>		<b>1.1663</b>		<b>1.2610</b>		<b>1.2195</b>		
<b>FTE ratio respondents private sector</b>	<b>0.0000</b>		<b>0.5540</b>		<b>0.5866</b>		<b>0.5691</b>		

**Notes**

- 1 Data has been estimated from Question 8 of the survey form, "How many hours over the last 4 weeks did you work in each of the following settings?". Responses have been added for up to three settings, and therefore are multiple responses. The responses do not equate to jobs or positions, as a respondent may work in more than one location in a setting, but will only show total hours in that setting.
- 2 Percentages by setting relate to total settings reported, not respondents
- 3 Respondents may report both public and private settings
- 4 FTE calculated by dividing hours worked by 40 hours per week

**Table B1.14 Employment setting of all jobs by sex, FTE non-specialist hospital salaried medical practitioners working in NSW, 2005**

Employment setting	No.	%	No.	%	No.	%	No.	%	Per cent female
	Unknown sex		Female		Male		Total		
<b>Public sector</b>									
Ambulatory centre, day surgery, community health centre, outpatient clinic	3.2	3.0%	30.2	3.7%	19.4	1.9%	52.8	2.7%	60.9%
Aboriginal health service	0.0	0.0%	5.2	0.6%	0.5	0.0%	5.6	0.3%	91.5%
Hospital, including psychiatric hospital	90.1	85.1%	699.8	85.0%	817.1	80.2%	1,607.0	82.5%	46.1%
Other residential health facility	0.1	0.1%	2.8	0.3%	3.5	0.3%	6.3	0.3%	44.8%
Tertiary education institution	2.0	1.9%	10.5	1.3%	9.9	1.0%	22.4	1.1%	51.3%
Defence forces	0.0	0.0%	0.6	0.1%	4.7	0.5%	5.3	0.3%	11.4%
Government department/agency	0.0	0.0%	3.5	0.4%	6.1	0.6%	9.6	0.5%	36.2%
Other	1.2	1.1%	15.3	1.9%	8.9	0.9%	25.4	1.3%	63.3%
<b>Total public sector</b>	<b>96.5</b>	<b>91.2%</b>	<b>767.8</b>	<b>93.3%</b>	<b>870.0</b>	<b>85.4%</b>	<b>1,734.3</b>	<b>89.1%</b>	<b>46.9%</b>
<b>Private sector</b>									
Private rooms/surgery	1.9	1.7%	12.7	1.5%	40.9	4.0%	55.4	2.8%	23.7%
Ambulatory centre, day surgery, community health centre, outpatient clinic	0.3	0.2%	2.8	0.3%	6.3	0.6%	9.3	0.5%	30.8%
24 hour/other medical centre	0.0	0.0%	1.7	0.2%	0.8	0.1%	2.5	0.1%	67.3%
Aboriginal health service	0.0	0.0%	0.1	0.0%	1.6	0.2%	1.8	0.1%	0.0%
Hospital, including psychiatric hospital	6.4	6.0%	32.3	3.9%	87.3	8.6%	126.0	6.5%	27.0%
Other residential health facility	0.0	0.0%	0.8	0.1%	1.3	0.1%	2.1	0.1%	39.0%
Tertiary education institution	0.3	0.2%	1.5	0.2%	2.9	0.3%	4.6	0.2%	33.6%
Other	0.6	0.6%	3.2	0.4%	7.6	0.7%	11.4	0.6%	29.7%
<b>Total private sector</b>	<b>9.3</b>	<b>8.8%</b>	<b>55.0</b>	<b>6.7%</b>	<b>148.6</b>	<b>14.6%</b>	<b>213.0</b>	<b>10.9%</b>	<b>27.0%</b>
<b>Total</b>	<b>105.9</b>	<b>100.0%</b>	<b>822.9</b>	<b>100.0%</b>	<b>1018.6</b>	<b>100.0%</b>	<b>1,947.3</b>	<b>100.0%</b>	<b>44.7%</b>
<i>Non-response:</i>	7		49		33		89		
		% of total	No.	% of total	No.	% of total	No.	% of total	
<b>Total no. of respondents</b>	<b>96</b>	<b>100.0%</b>	<b>754</b>	<b>100.0%</b>	<b>838</b>	<b>100.0%</b>	<b>1688</b>	<b>100.0%</b>	<b>47.4%</b>
<b>Total respondents public sector</b>	<b>84</b>	<b>87.5%</b>	<b>708</b>	<b>93.9%</b>	<b>775</b>	<b>92.5%</b>	<b>1567</b>	<b>92.8%</b>	<b>47.7%</b>
<b>Total respondents private sector</b>	<b>22</b>	<b>22.9%</b>	<b>116</b>	<b>15.4%</b>	<b>199</b>	<b>23.7%</b>	<b>337</b>	<b>20.0%</b>	<b>36.8%</b>
<b>FTE ratio all respondents</b>	<b>1.1027</b>		<b>1.0914</b>		<b>1.2155</b>		<b>1.1536</b>		
<b>FTE ratio respondents public sector</b>	<b>1.1492</b>		<b>1.0845</b>		<b>1.1225</b>		<b>1.1068</b>		
<b>FTE ratio respondents private sector</b>	<b>0.4241</b>		<b>0.4745</b>		<b>0.7467</b>		<b>0.6319</b>		

**Notes**

- <sup>1</sup> Data has been estimated from Question 8 of the survey form, "How many hours over the last 4 weeks did you work in each of the following settings?". Responses have been added for up to three settings, and therefore are multiple responses. The responses do not equate to jobs or positions, as a respondent may work in more than one location in a setting, but will only show total hours in that setting.
- <sup>2</sup> Percentages by setting relate to total settings reported, not respondents
- <sup>3</sup> Respondents may report both public and private settings
- <sup>4</sup> FTE calculated by dividing hours worked by 40 hours per week

**Table B 1.15: Medical Practitioners seeking work in medicine in NSW, 2005**

Type of work sought	No.	%	No.	%	No.	%	No.	%	%
	Sex unknown		Female		Male		Total		Female
Not looking for work in medicine	1	100.0%	175	84.5%	137	81.5%	313	83.2%	56.1%
Looking for work in medicine:									
- full time	0	0.0%	7	3.4%	11	6.5%	18	4.8%	38.9%
- part time	0	0.0%	25	12.1%	20	11.9%	45	12.0%	55.6%
<b>Total</b>	<b>1</b>	<b>100.0%</b>	<b>207</b>	<b>100.0%</b>	<b>168</b>	<b>100.0%</b>	<b>376</b>	<b>100.0%</b>	<b>55.2%</b>
<i>non response/unknown</i>	0	0.0%	3	1.4%	4	2.3%	7	1.8%	

**Note:** Table includes only those survey respondents in Table B1.6 who indicated that they were not currently working or currently working but not in medicine (n=383)

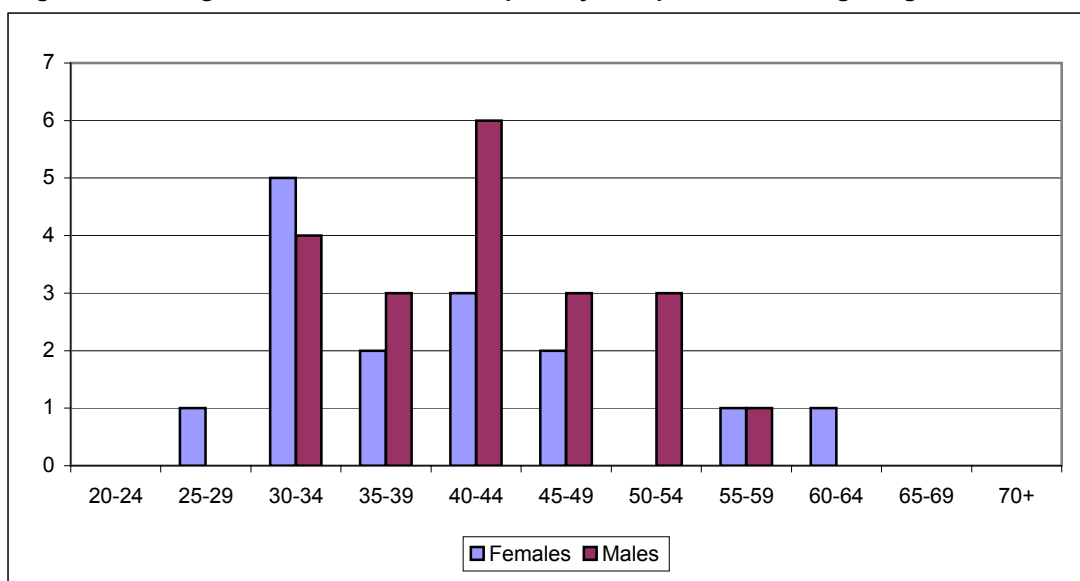
**Table B 1.16: Average years remaining in workforce by age**

Age	No.	No.	No.	No.
	Sex unknown	Female	Male	Total
19-24	0	31.3	33.8	32.2
25-29	40.5	30.1	32.2	31.1
30-34	23.8	26.6	28.4	27.6
35-39	26.3	22.1	24	23.2
40-44	25	18.2	19.2	18.8
45-49	0	14.5	15.6	15.2
50-54	20	11.1	12	11.7
55-59	0	7.8	8.8	8.6
60-64	5	5.7	6.6	6.5
65-69	0	4.3	4.9	4.8
70-74	0	4.9	4.1	4.2
75+	0	3.1	4.1	4
<b>Total</b>	<b>25.4</b>	<b>18.6</b>	<b>15.3</b>	<b>16.4</b>
<i>Unknown age</i>	0	18.8	16.9	17.5

**Table B.1.17 Age and sex distribution of primary care practitioners migrating to NSW, 2005**

Age group	Sex unknown		Female		Male		Total		Per cent female
	No.	%	No.	%	No.	%	No.	%	
20-24	0	0.0%	0	0.0%	0	0.0%	0	0.0%	0.0%
25-29	0	0.0%	1	6.7%	0	0.0%	1	2.9%	100.0%
30-34	0	0.0%	5	33.3%	4	20.0%	9	25.7%	55.6%
35-39	0	0.0%	2	13.3%	3	15.0%	5	14.3%	40.0%
40-44	0	0.0%	3	20.0%	6	30.0%	9	25.7%	33.3%
45-49	0	0.0%	2	13.3%	3	15.0%	5	14.3%	40.0%
50-54	0	0.0%	0	0.0%	3	15.0%	3	8.6%	0.0%
55-59	0	0.0%	1	6.7%	1	5.0%	2	5.7%	50.0%
60-64	0	0.0%	1	6.7%	0	0.0%	1	2.9%	100.0%
65-69	0	0.0%	0	0.0%	0	0.0%	0	0.0%	0.0%
70+	0	0.0%	0	0.0%	0	0.0%	0	0.0%	0.0%
<b>Total</b>	<b>0</b>	<b>0.0%</b>	<b>15</b>	<b>100.0%</b>	<b>20</b>	<b>100.0%</b>	<b>35</b>	<b>100.0%</b>	<b>42.9%</b>

**Fig B1.2 Age and sex distribution of primary care practitioners migrating to NSW, 2005**



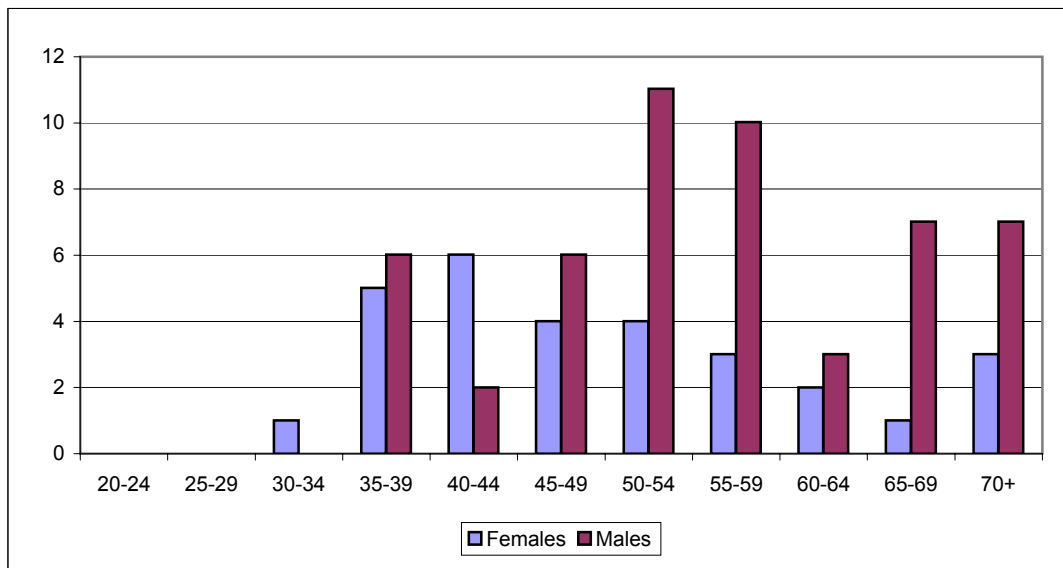
**Notes:**

- 1 Migration includes interstate and overseas migration
- 2 Age and sex cohorts are weighted to population estimates
- 3 Migration is estimated to be 0.4% of the total estimated primary care practitioner workforce of 8,121

**Table B 1.18 Age and sex distribution of primary care practitioners re-entering the workforce in NSW, 2005**

Age group	Sex unknown		Female		Male		Total		Per cent female
	No.	%	No.	%	No.	%	No.	%	
20-24	0	0.0%	0	0.0%	0	0.0%	0	0.0%	0.0%
25-29	0	0.0%	0	0.0%	0	0.0%	0	0.0%	0.0%
30-34	0	0.0%	1	3.4%	0	0.0%	1	1.2%	100.0%
35-39	0	0.0%	5	17.2%	6	11.5%	11	13.6%	45.5%
40-44	0	0.0%	6	20.7%	2	3.8%	8	9.9%	75.0%
45-49	0	0.0%	4	13.8%	6	11.5%	10	12.3%	40.0%
50-54	0	0.0%	4	13.8%	11	21.2%	15	18.5%	26.7%
55-59	0	0.0%	3	10.3%	10	19.2%	13	16.0%	23.1%
60-64	0	0.0%	2	6.9%	3	5.8%	5	6.2%	40.0%
65-69	0	0.0%	1	3.4%	7	13.5%	8	9.9%	12.5%
70+	0	0.0%	3	10.3%	7	13.5%	10	12.3%	30.0%
<b>Total</b>	<b>0</b>	<b>0.0%</b>	<b>29</b>	<b>100.0%</b>	<b>52</b>	<b>100.0%</b>	<b>81</b>	<b>100.0%</b>	<b>35.8%</b>

**Fig B1.3: Age and sex distribution of primary care practitioners re-entering the workforce in NSW, 2005**



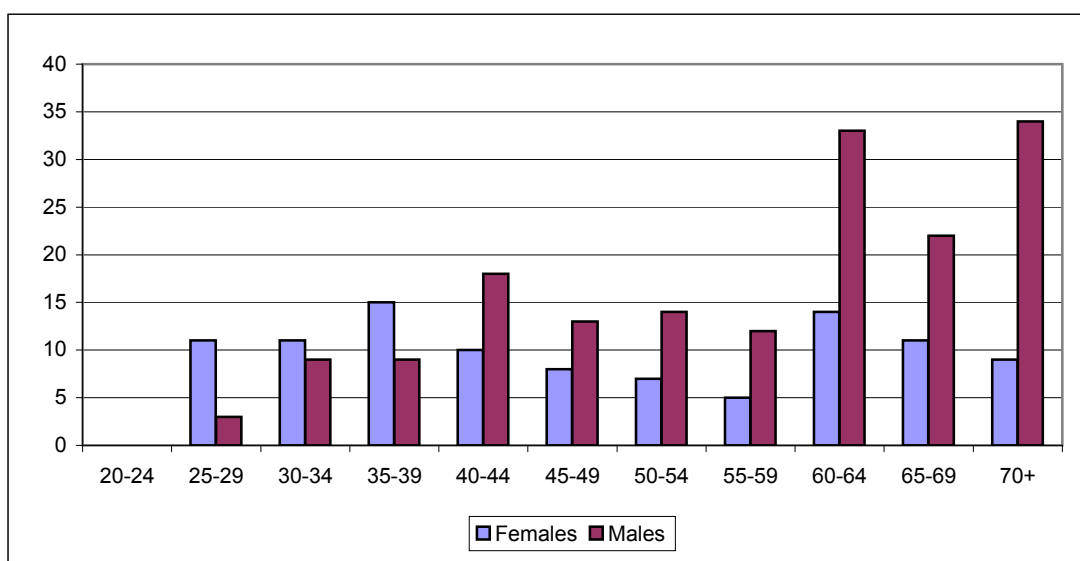
**Notes:**

- 1 Re-entry based on primary care practitioners not working 2004, working in NSW 2005
- 2 Age and sex cohorts are weighted to population estimates
- 3 Re-entry is estimated to be 1.0% of the total estimated primary care practitioner workforce of 8,121

**Table B 1.19 Age and sex distribution of primary care practitioners leaving the workforce in NSW, 2005**

Age group	Sex unknown		Female		Male		Total		Per cent female
	No.	%	No.	%	No.	%	No.	%	
20-24	0	0.0%	320	4.9%	10	1.6%	330	4.6%	97.0%
25-29	0	0.0%	974	15.0%	89	13.9%	1,063	14.9%	91.6%
30-34	0	0.0%	665	10.2%	109	17.0%	774	10.8%	85.9%
35-39	0	0.0%	506	7.8%	70	10.9%	576	8.1%	87.8%
40-44	0	0.0%	597	9.2%	67	10.4%	664	9.3%	89.9%
45-49	0	0.0%	658	10.1%	76	11.8%	734	10.3%	89.6%
50-54	0	0.0%	464	7.1%	56	8.7%	520	7.3%	89.2%
55-59	0	0.0%	1222	18.8%	32	5.0%	1,254	17.5%	97.4%
60-64	0	0.0%	737	11.3%	95	14.8%	832	11.6%	88.6%
65-69	0	0.0%	259	4.0%	26	4.1%	286	4.0%	90.8%
70+	0	0.0%	109	1.7%	12	1.9%	121	1.7%	90.1%
<b>Total</b>	<b>0</b>	<b>0.0%</b>	<b>6,511</b>	<b>100.0%</b>	<b>642</b>	<b>100.0%</b>	<b>7,153</b>	<b>100.0%</b>	<b>91.0%</b>

**Fig B.1.4: Age and sex distribution of primary care practitioners leaving the workforce in NSW, 2005**



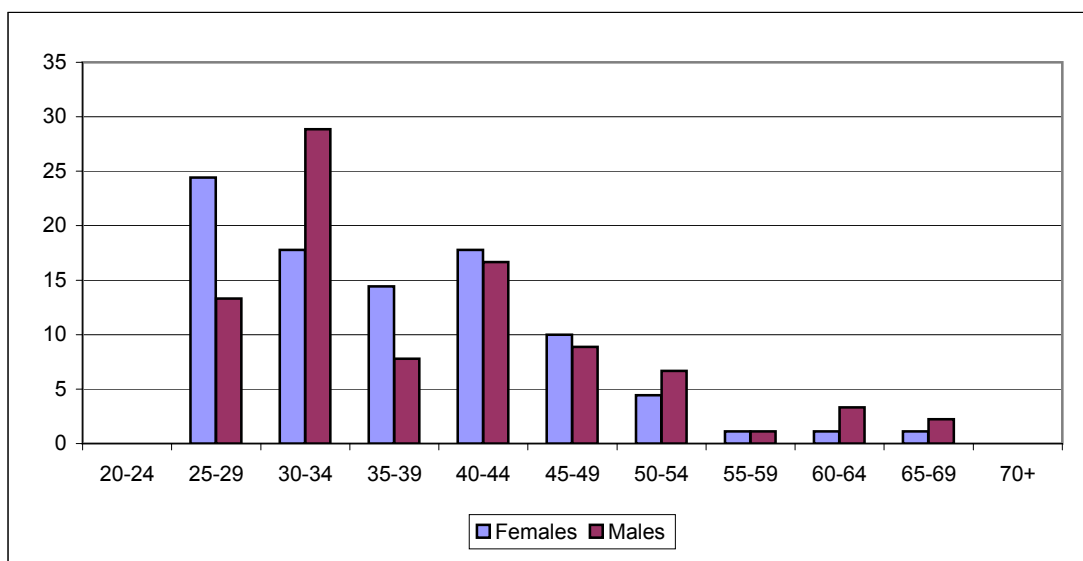
**Notes:**

- 1 Losses based on primary care practitioners working in NSW 2004, not working in NSW 2005
- 2 Age and sex cohorts are weighted to population estimates
- 3 Losses are estimated to be 3.3% of the total estimated medical practitioner workforce of 8,121

**Table B 1.20 Age and sex distribution of vocational trainees completing training and in the workforce in NSW, 2005**

Age group	Sex unknown		Female		Male		Total		Per cent female
	No.	%	No.	%	No.	%	No.	%	
20-24	0	0.0%	0	0.0%	0	0.0%	0	0.0%	0.0%
25-29	0	0.0%	24	26.5%	13	15.0%	38	20.9%	64.7%
30-34	0	0.0%	18	19.3%	29	32.5%	47	25.8%	38.1%
35-39	0	0.0%	14	15.7%	8	8.8%	22	12.3%	65.0%
40-44	0	0.0%	18	19.3%	17	18.8%	34	19.0%	51.6%
45-49	0	0.0%	10	10.8%	9	10.0%	19	10.4%	52.9%
50-54	0	0.0%	4	4.8%	7	7.5%	11	6.1%	40.0%
55-59	0	0.0%	1	1.2%	1	1.3%	2	1.2%	50.0%
60-64	0	0.0%	1	1.2%	3	3.8%	4	2.5%	25.0%
65-69	0	0.0%	1	1.2%	2	2.5%	3	1.8%	0.0%
70+	0	0.0%	0	0.0%	0	0.0%	0	0.0%	0.0%
<b>Total</b>	<b>0</b>	<b>0.0%</b>	<b>92</b>	<b>100.0%</b>	<b>89</b>	<b>100.0%</b>	<b>181</b>	<b>100.0%</b>	<b>50.9%</b>

**Fig B 1.5: Age and sex distribution of vocational trainees completing training and in the workforce in NSW, 2005**



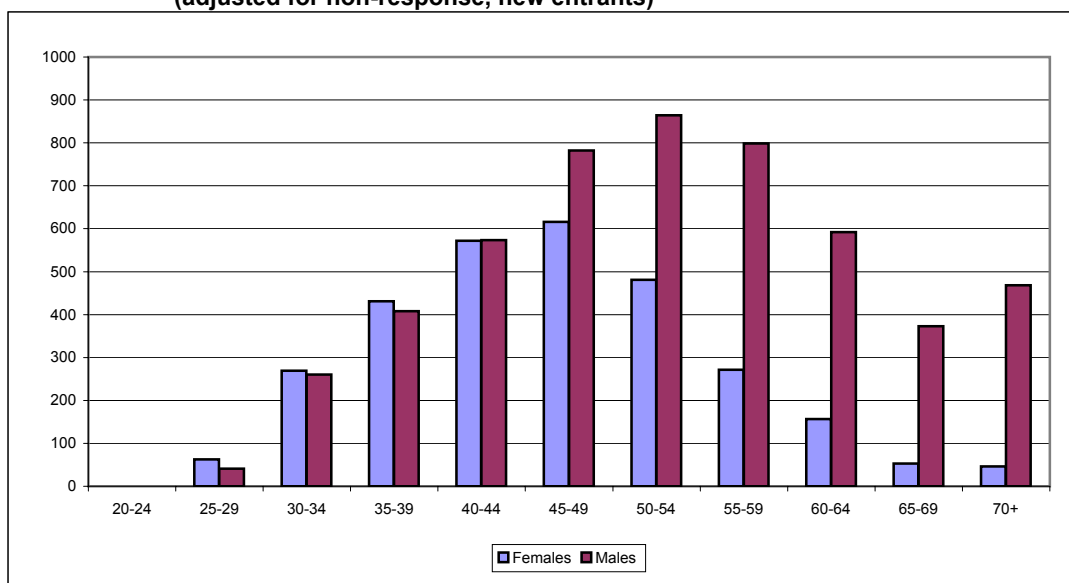
**Notes:**

- 1 Vocational trainees based on numbers in training program in NSW in 2004, working in NSW 2005
- 2 Age and sex cohorts are weighted to population estimates
- 3 Vocational trainees are estimated to be 2.2% of the total estimated primary care practitioner workforce of 8,121

**Table B 1.21 Age and sex distribution of the primary care practitioner workforce in NSW, 2005**

Age group	No.	%	No.	%	No.	%	No.	%	Per cent female
	Sex unknown		Female		Male		Total		
20-24	0	0.0%	0	0.0%	0	0.0%	0	0.0%	0.0%
25-29	0	0.0%	63	2.1%	41	0.8%	104	1.3%	60.6%
30-34	0	0.0%	269	9.1%	260	5.0%	529	6.5%	50.8%
35-39	0	0.0%	431	14.6%	408	7.9%	840	10.3%	51.4%
40-44	0	0.0%	572	19.3%	574	11.1%	1,146	14.1%	49.9%
45-49	0	0.0%	616	20.8%	782	15.2%	1,398	17.2%	44.1%
50-54	0	0.0%	481	16.3%	864	16.7%	1,345	16.6%	35.8%
55-59	0	0.0%	272	9.2%	799	15.5%	1,071	13.2%	25.4%
60-64	0	0.0%	157	5.3%	592	11.5%	749	9.2%	20.9%
65-69	0	0.0%	53	1.8%	373	7.2%	426	5.2%	12.4%
70+	0	0.0%	46	1.5%	468	9.1%	514	6.3%	8.9%
<b>Total</b>	<b>0</b>	<b>0.0%</b>	<b>2,960</b>	<b>100.0%</b>	<b>5,161</b>	<b>100.0%</b>	<b>8,121</b>	<b>100.0%</b>	<b>36.4%</b>

**Fig B.1.6 Age and sex distribution of the primary care practitioner workforce in NSW, 2005 (adjusted for non-response, new entrants)**



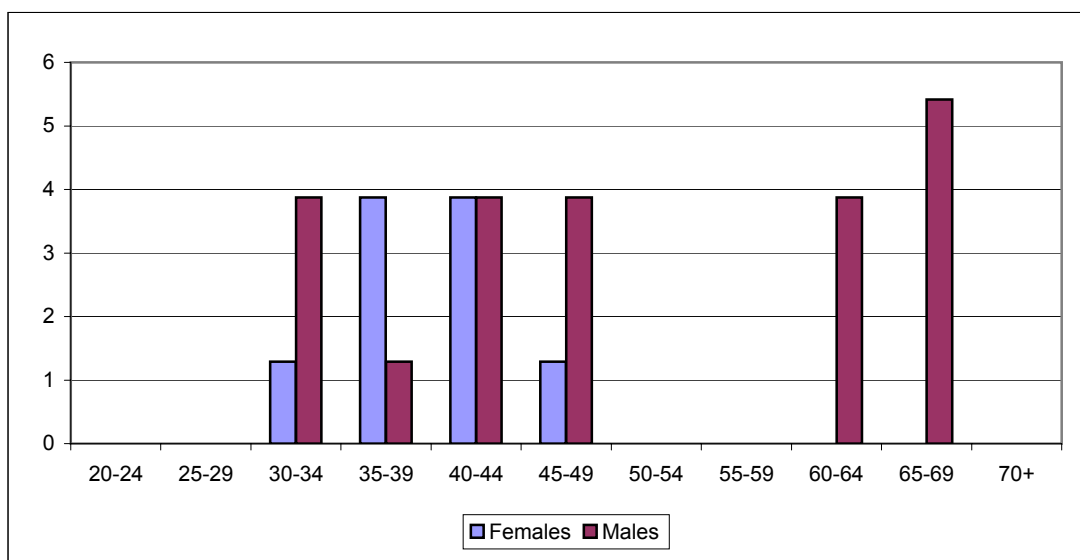
**Notes:**

- 1 Based on primary care practitioners working in NSW 2005
- 2 Age and sex cohorts are weighted to population estimates

**Table B 1.22 Age and sex distribution of specialists migrating to NSW, 2005**

Age group	Sex unknown		Female		Male		Total		Per cent female
	No.	%	No.	%	No.	%	No.	%	
20-24	0	0.0%	0	0.0%	0	0.0%	0	0.0%	0.0%
25-29	0	0.0%	0	0.0%	0	0.0%	0	0.0%	0.0%
30-34	0	0.0%	1	12.5%	4	17.4%	5	15.9%	25.0%
35-39	0	0.0%	4	37.5%	1	5.8%	5	15.9%	75.0%
40-44	0	0.0%	4	37.5%	4	17.4%	8	23.8%	50.0%
45-49	0	0.0%	1	12.5%	4	17.4%	5	15.9%	25.0%
50-54	0	0.0%	0	0.0%	0	0.0%	0	0.0%	0.0%
55-59	0	0.0%	0	0.0%	0	0.0%	0	0.0%	0.0%
60-64	0	0.0%	0	0.0%	4	17.4%	4	11.9%	0.0%
65-69	0	0.0%	0	0.0%	5	24.4%	5	16.6%	0.0%
70+	0	0.0%	0	0.0%	0	0.0%	0	0.0%	0.0%
<b>Total</b>	<b>0</b>	<b>0.0%</b>	<b>10</b>	<b>100.0%</b>	<b>22</b>	<b>100.0%</b>	<b>33</b>	<b>100.0%</b>	<b>31.8%</b>

**Fig B 1.7 Age and sex distribution of specialists migrating to NSW, 2005**



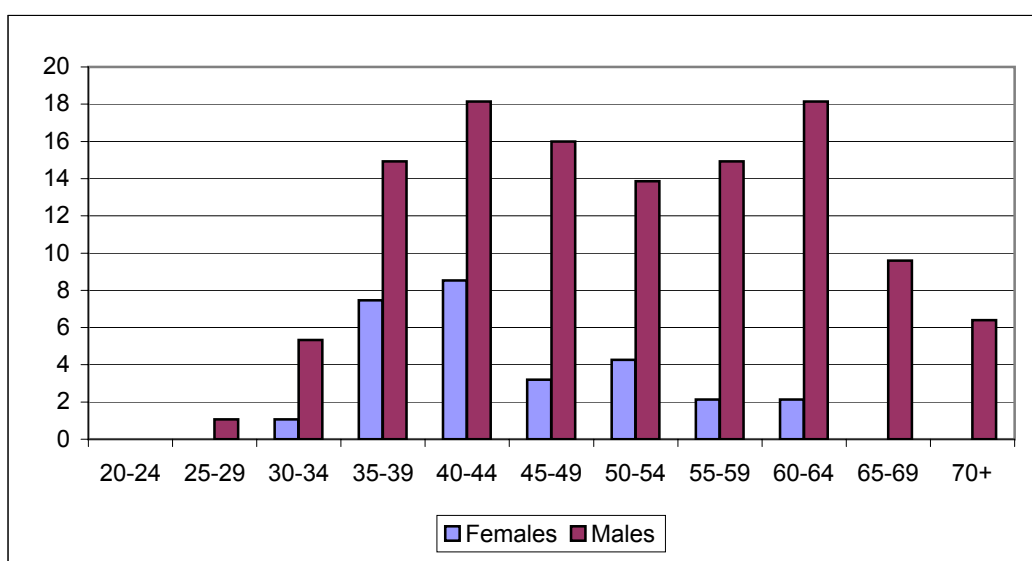
**Notes:**

- 1 Migration includes interstate and overseas migration
- 2 Age and sex cohorts are weighted to population estimates
- 3 Migration is estimated to be 0.4% of the total estimated specialist medical practitioner workforce of 7,750

**Table B 1.23 Age and sex distribution of specialists re-entering the workforce in NSW, 2005**

Age group	Sex unknown		Female		Male		Total		Per cent female
	No.	%	No.	%	No.	%	No.	%	
20-24	0	0.0%	0	0.0%	0	0.0%	0	0.0%	0.0%
25-29	0	0.0%	0	0.0%	1	0.9%	1	0.7%	0.0%
30-34	0	0.0%	1	3.7%	5	4.5%	6	4.3%	16.7%
35-39	0	0.0%	7	25.9%	15	12.6%	22	15.2%	33.3%
40-44	0	0.0%	9	29.6%	18	15.3%	27	18.1%	32.0%
45-49	0	0.0%	3	11.1%	16	13.5%	19	13.0%	16.7%
50-54	0	0.0%	4	14.8%	14	11.7%	18	12.3%	23.5%
55-59	0	0.0%	2	7.4%	15	12.6%	17	11.6%	12.5%
60-64	0	0.0%	2	7.4%	18	15.3%	20	13.8%	10.5%
65-69	0	0.0%	0	0.0%	10	8.1%	10	6.5%	0.0%
70+	0	0.0%	0	0.0%	6	5.4%	6	4.3%	0.0%
<b>Total</b>	<b>0</b>	<b>0.0%</b>	<b>29</b>	<b>100.0%</b>	<b>118</b>	<b>100.0%</b>	<b>147</b>	<b>100.0%</b>	<b>19.6%</b>

**Fig B 1.8 Age and sex distribution of specialists re-entering the workforce in NSW, 2005**



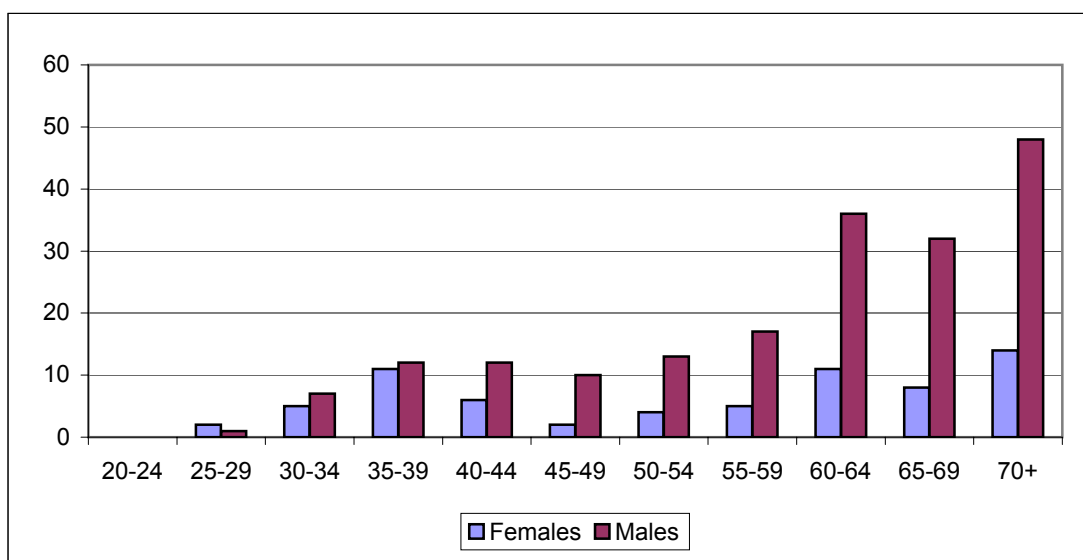
**Notes:**

- 1 Re-entry based on specialists not working 2004, working in NSW 2005
- 2 Age and sex cohorts are weighted to population estimates
- 3 Re-entry is estimated to be 1.9% of the total estimated specialist medical practitioner workforce of 7,750

**Table B 1.24 Age and sex distribution of specialists leaving the workforce in NSW, 2005**

Age group	Sex unknown		Female		Male		Total		Per cent female
	No.	%	No.	%	No.	%	No.	%	
20-24	0	0.0%	0	0.0%	0	0.0%	0	0.0%	0.0%
25-29	0	0.0%	2	2.9%	1	0.5%	3	1.2%	66.7%
30-34	0	0.0%	5	7.4%	7	3.7%	12	4.7%	41.7%
35-39	0	0.0%	11	16.2%	12	6.4%	23	9.0%	47.8%
40-44	0	0.0%	6	8.8%	12	6.4%	18	7.0%	33.3%
45-49	0	0.0%	2	2.9%	10	5.3%	12	4.7%	16.7%
50-54	0	0.0%	4	5.9%	13	6.9%	17	6.6%	23.5%
55-59	0	0.0%	5	7.4%	17	9.0%	22	8.6%	22.7%
60-64	0	0.0%	11	16.2%	36	19.1%	47	18.4%	23.4%
65-69	0	0.0%	8	11.8%	32	17.0%	40	15.6%	20.0%
70+	0	0.0%	14	20.6%	48	25.5%	62	24.2%	22.6%
<b>Total</b>	<b>0</b>	<b>0.0%</b>	<b>68</b>	<b>100.0%</b>	<b>188</b>	<b>100.0%</b>	<b>256</b>	<b>100.0%</b>	<b>26.6%</b>

**Fig B 1.9 Age and sex distribution of specialists leaving the workforce in NSW, 2005**



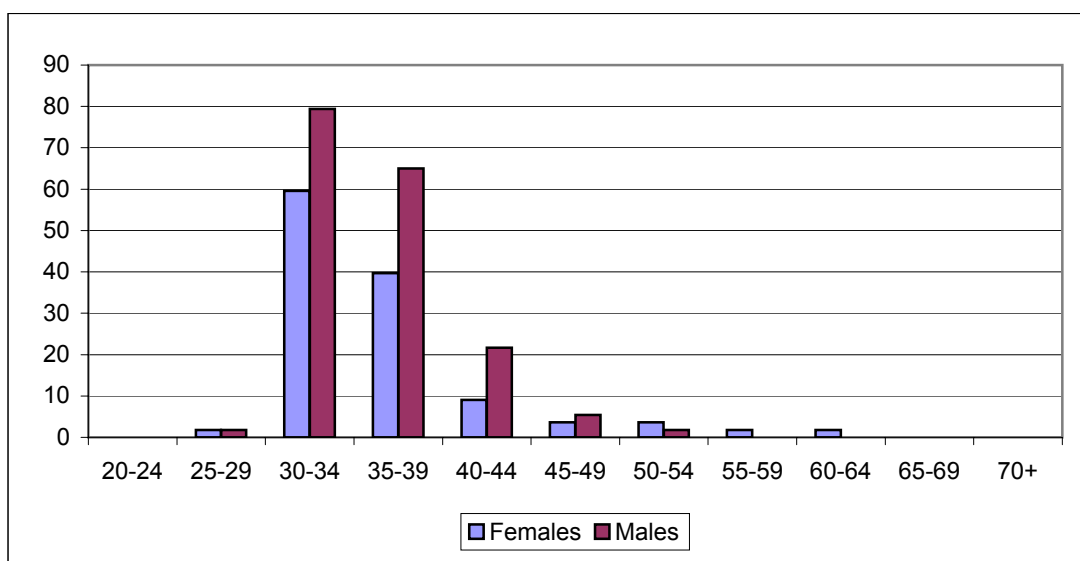
**Notes:**

- 1 Losses based on specialist medical practitioners working in NSW 2004, not working in NSW 2005
- 2 Age and sex cohorts are weighted to population estimates
- 3 Losses are estimated to be 3.3% of the total estimated specialist medical practitioner workforce of 7,750

**Table B 1.25 Age and sex distribution of trainee specialists entering the specialist workforce in NSW, 2005**

Age group	Sex unknown		Female		Male		Total		Per cent female
	No.	%	No.	%	No.	%	No.	%	
20-24	0	0.0%	0	0.0%	0	0.0%	0	0.0%	0.0%
25-29	0	0.0%	2	1.5%	2	1.0%	4	1.2%	50.0%
30-34	0	0.0%	60	49.3%	79	45.4%	139	47.0%	42.9%
35-39	0	0.0%	40	32.8%	65	37.1%	105	35.4%	37.9%
40-44	0	0.0%	9	7.5%	22	12.4%	31	10.4%	29.4%
45-49	0	0.0%	4	3.0%	5	3.1%	9	3.0%	40.0%
50-54	0	0.0%	4	3.0%	2	1.0%	5	1.8%	66.7%
55-59	0	0.0%	2	1.5%	0	0.0%	2	0.6%	100.0%
60-64	0	0.0%	2	1.5%	0	0.0%	2	0.6%	100.0%
65-69	0	0.0%	0	0.0%	0	0.0%	0	0.0%	0.0%
70+	0	0.0%	0	0.0%	0	0.0%	0	0.0%	0.0%
<b>Total</b>	<b>0</b>	<b>0.0%</b>	<b>121</b>	<b>100.0%</b>	<b>175</b>	<b>100.0%</b>	<b>296</b>	<b>100.0%</b>	<b>40.9%</b>

**Fig B.1.10 Age and sex distribution of trainee specialists entering the specialist workforce in NSW, 2005**



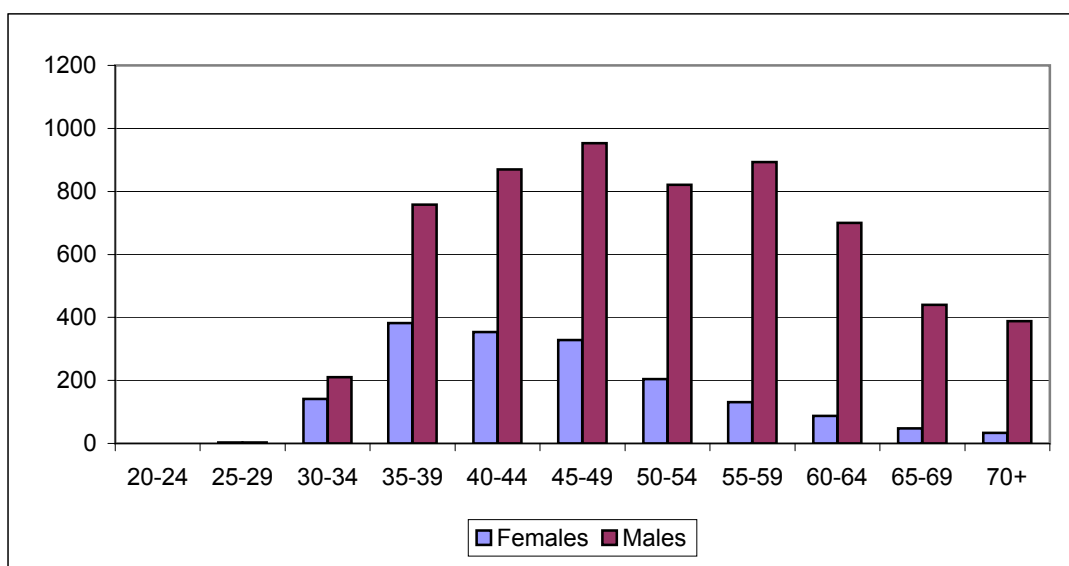
**Notes:**

- 1 Vocational trainees based on numbers in training program in NSW in 2004, working in NSW 2005
- 2 Age and sex cohorts are weighted to population estimates
- 3 Vocational trainees are estimated to be 3.8% of the total estimated specialist workforce of 7,750

**Table B 1.26 Age and sex distribution of the specialist workforce in NSW, 2005**

Age group	No.	%	No.	%	No.	%	No.	%	
	Sex unknown		Female		Male		Total		Per cent female
20-24	0	0.0%	0	0.0%	0	0.0%	0	0.0%	0.0%
25-29	0	0.0%	3	0.2%	3	0.0%	6	0.1%	52.4%
30-34	0	0.0%	142	8.3%	210	3.5%	351	4.5%	40.3%
35-39	0	0.0%	382	22.3%	758	12.6%	1,140	14.7%	33.5%
40-44	0	0.0%	354	20.7%	870	14.4%	1,224	15.8%	28.9%
45-49	0	0.0%	328	19.2%	953	15.8%	1,282	16.5%	25.6%
50-54	0	0.0%	204	11.9%	821	13.6%	1,025	13.2%	19.9%
55-59	0	0.0%	131	7.6%	894	14.8%	1,025	13.2%	12.8%
60-64	0	0.0%	88	5.1%	700	11.6%	788	10.2%	11.1%
65-69	0	0.0%	47	2.8%	440	7.3%	487	6.3%	9.7%
70+	0	0.0%	34	2.0%	388	6.4%	422	5.4%	8.0%
<b>Total</b>	<b>0</b>	<b>0.0%</b>	<b>1,712</b>	<b>100.0%</b>	<b>6,037</b>	<b>100.0%</b>	<b>7,750</b>	<b>100.0%</b>	<b>22.1%</b>

**Fig B.1.11 Age and sex distribution of the specialist workforce in NSW, 2005 (adjusted for non-response, new entrants)**



**Notes:**

- 1 Based on specialist medical practitioners working in NSW 2005
- 2 Age and sex cohorts are weighted to population estimates

---

# Appendix C

Survey Questionnaire

Medical Practitioners Registered  
in NSW in 2005

Table C1.1 Summary of data available from the annual medical labour force survey, 1993 – 2005

Data item from current survey	2001 to 2005	2000	1999	1998	1997	1996	1995	1994	1993
1 Registered interstate Registered in Vic Registered in Qld Registered in WA Registered in SA Registered in Tas Registered in NT Registered in ACT									
2 Australian citizen Permanent resident									
3 Postcode of residence									
4 Aboriginal or Torres Strait Islander									
5 Current working status Not working and seeking work Nature of work being sought									
6 Hours/week - standard - main job Hours/week - on call worked - main job Hours/week - on call not worked - main job Hours/week - total worked - main job Hours/week - standard - 2nd job Hours/week - on call worked - 2nd job Hours/week - on call not worked - 2nd job Hours/week - total worked - 2nd job Hours/week - standard - 3rd job Hours/week - on call worked - 3rd job Hours/week - on call not worked - 3rd job Hours/week - total worked - 3rd job Hours/week - unpaid	for all medical jobs only     hours in direct patient contact, hours on call not worked and total hours, hours per job reported by setting from 2001								
7 Field of medicine - main job Field of medicine - 2nd job Field of medicine - 3rd job	no longer collected from 2001 for each job								
8 Employment setting - main Employment setting - 2nd Employment setting - 3rd	setting by hours worked						Sector and industry		
9 Postcode of work, main job Postcode of work, 2nd job Postcode of work, 3rd job	location by proportion of hrs							Locations Locations	
10 Weeks per year in scheduled sessions for patent care									
11 No. yrs intend to remain in workforce									
12 Type of medical practice GP specialisation GP qualifications GP working as.. Number of primary care practitioners at main practice location?								not comparable	
12 Non-specialist position type Non-specialist qualifications Right of Private practice? Awaiting entry to course? Years to be worked in this area?								not comparable	
12 Specialist Qualifications 1 Specialist Qualifications 2 Specialist Qualifications 3 Area of specialist practice 1 Area of specialist practice 2 Area of specialist practice 3			49 categories	47 categories	47 categories	47 categories	47 categories	46 categories	
12 Training specialty Yr of training completion	49 categories	49 categories	47 categories	47 categories	47 categories	47 categories	47 categories	46 categories	
RB Sex Year of birth Year of first registration in NSW Registration status New registrant Renewal Restoration Restoration Recorded qualifications data							7 categories		
See over page for legend and notes.									

**Summary of data available from the annual medical labour force survey, 1993 – 2005 (continued)**

**Legend**

- || Indicates a significant review of the survey content that affects a number of questions or categories.
- | Indicates a change in question wording or categories that may reduce comparability of data.
- Indicates the data item is not available from the annual medical labour force survey for that year.
- RB Indicates registration data source from NSW Medical Board rather than survey.

**Notes**

- Questions no longer included on the survey are not summarised on Table A2.1.
- Major changes in classifications that affect data comparability are noted on the table.

# Appendix D

**Table D1.1 Estimated Residential Population by Health Service, 2005**

Geographical Location	No.		%		No.		%	
	Female		Male		Total		Per cent female	
<b>Area Health Service</b>								
Greater Southern	233,046	6.8%	235,605	7.0%	468,651	6.9%	33.5%	
Greater Western	151,345	4.4%	153,643	4.6%	304,988	4.5%	33.5%	
Hunter & New England	421,013	12.4%	415,602	12.3%	836,615	12.3%	33.2%	
North Coast	240,081	7.1%	233,621	6.9%	473,702	7.0%	33.0%	
Northern Sydney & Central Coast	567,180	16.7%	540,354	16.0%	1,107,534	16.3%	32.8%	
South Eastern Sydney & Illawarra	587,681	17.3%	583,547	17.3%	1,171,228	17.3%	33.3%	
Sydney South West	659,258	19.4%	660,558	19.6%	1,319,816	19.5%	33.4%	
Sydney West	545,054	16.0%	546,661	16.2%	1,091,715	16.1%	33.4%	
<b>Total</b>	<b>3,404,658</b>	<b>100.0%</b>	<b>3,369,591</b>	<b>100.0%</b>	<b>6,774,249</b>	<b>100.0%</b>	<b>33.2%</b>	

Source: ABS ERP Population 2005