

Blunt assault

Figure 44. Blunt assault trauma patient admissions to all trauma services for 2004 by age and gender

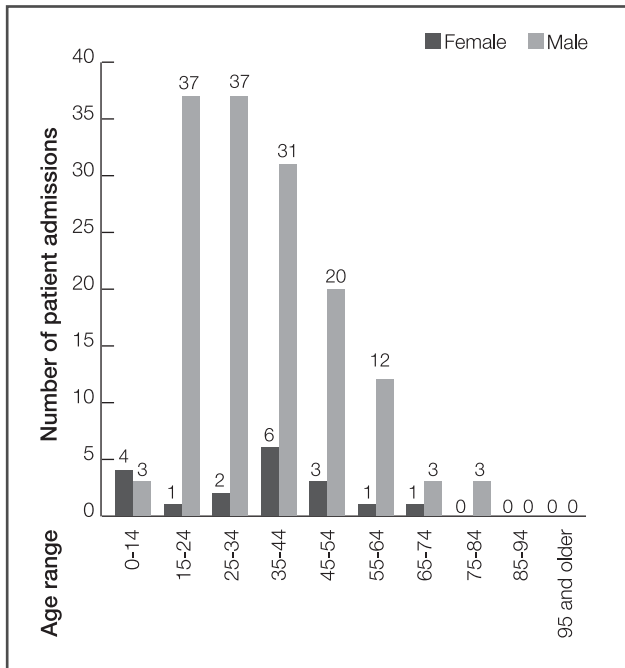


Figure 46. Blunt assault trauma patient admissions to all trauma services for 2002-2004 by outcome

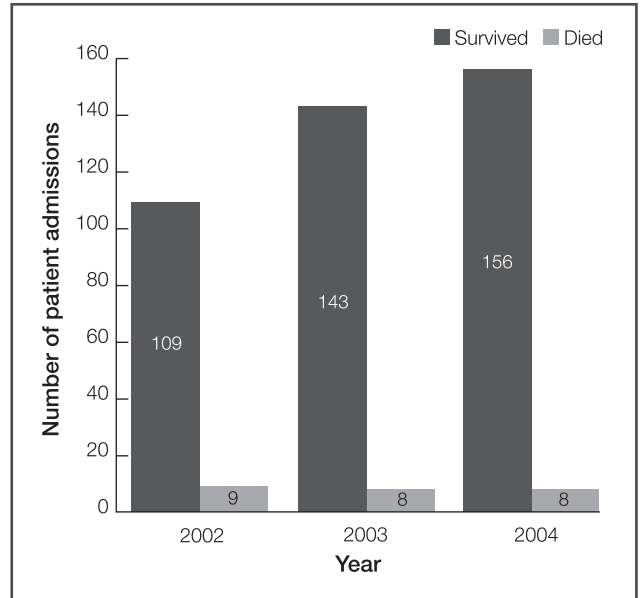
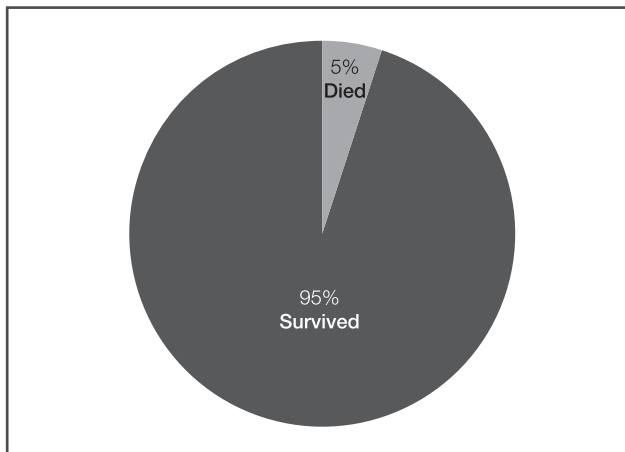


Figure 45. Blunt assault trauma patient admissions to all trauma services for 2004 by outcome



Shooting

Figure 47. Shooting trauma patient admissions to all trauma services for 2004 by age and gender

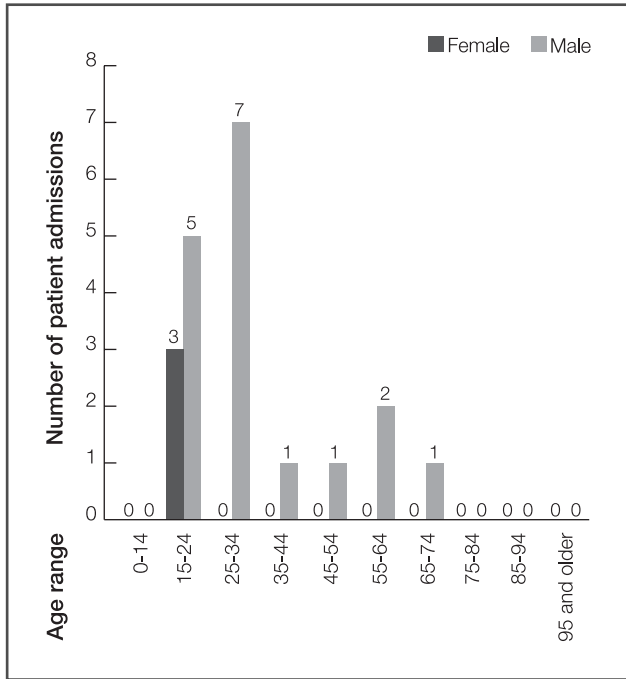


Figure 49. Shooting trauma patient admissions to all trauma services for 2002-2004 by outcome

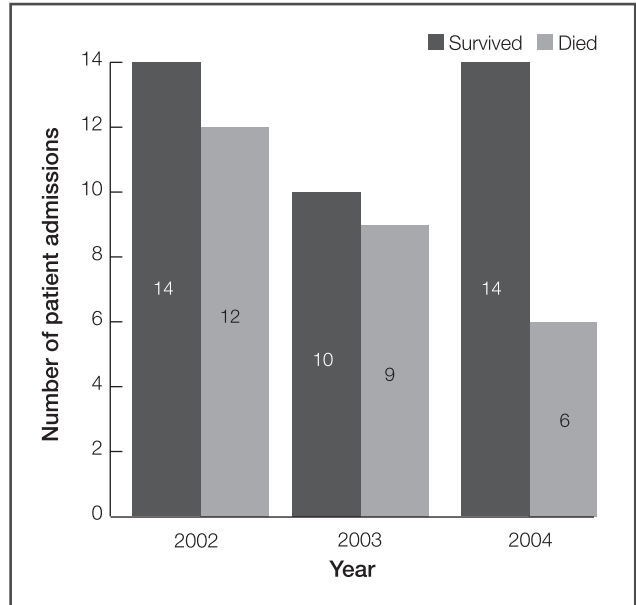
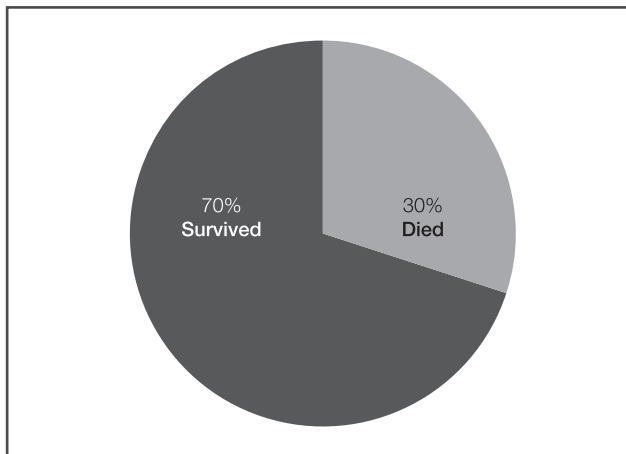


Figure 48. Shooting trauma patient admissions to all trauma services for 2004 by outcome



Stabbing

Figure 50. Stabbing trauma patient admissions to all trauma services for 2004 by age and gender

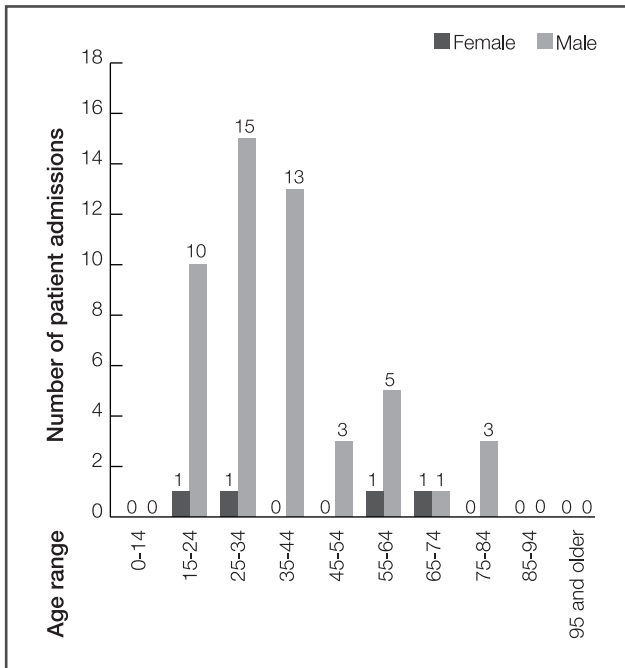


Figure 52. Stabbing trauma patient admissions to all trauma services for 2002-2004 by outcome

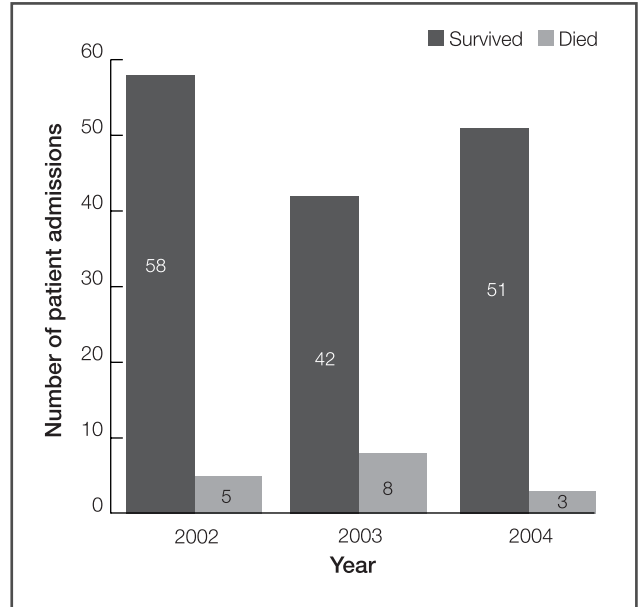
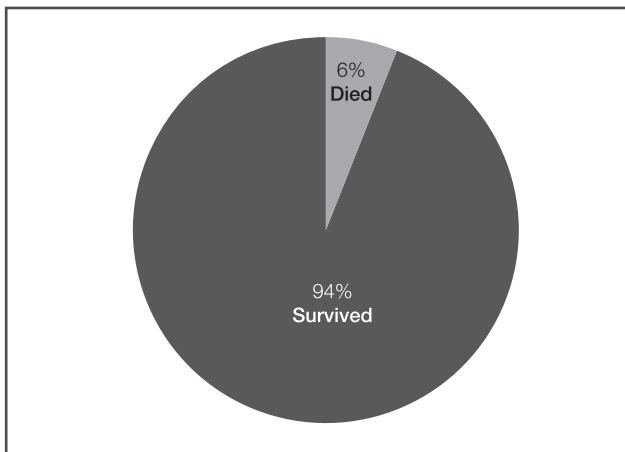


Figure 51. Stabbing trauma patient admissions to all trauma services for 2004 by outcome



Arrival modes

Figure 53. Frequency of arrival modes for direct from scene admissions to all trauma services for 2004

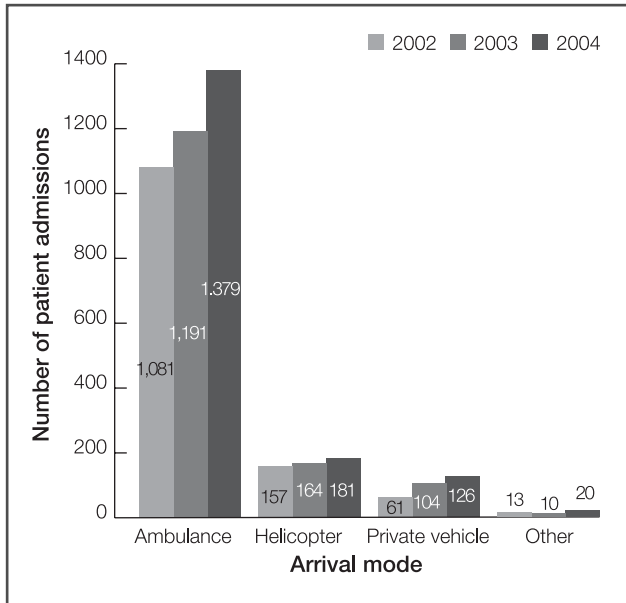


Figure 55. Admission type percentages by top three arrival modes for trauma admissions to all trauma services for 2004

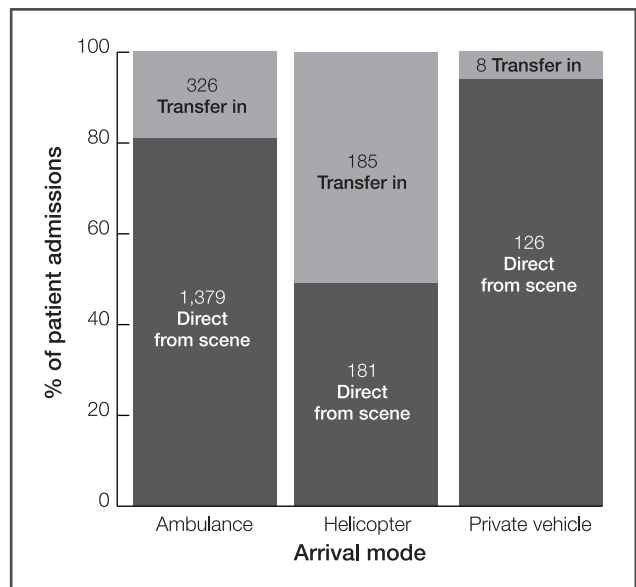
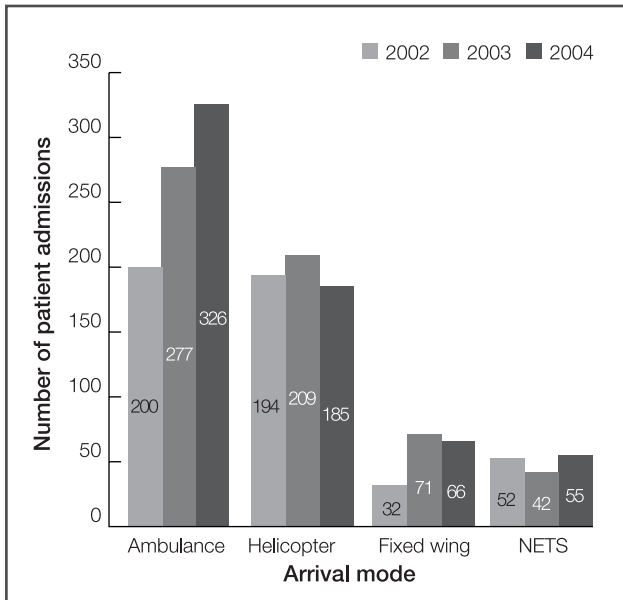
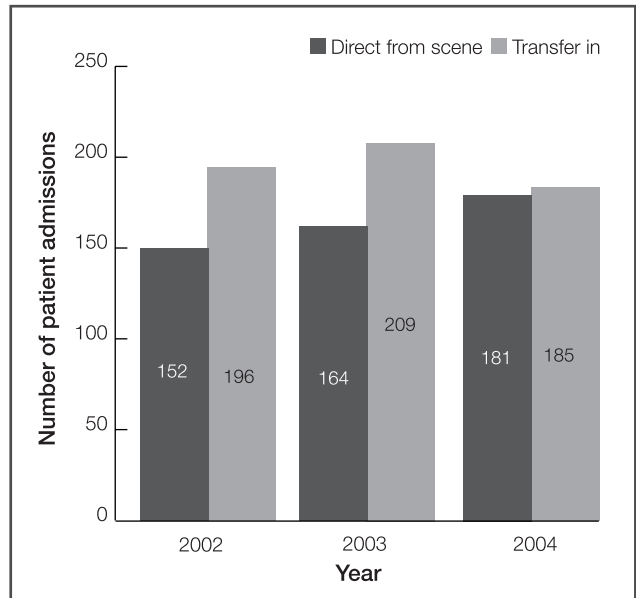


Figure 54. Frequency of arrival modes for transfer in trauma admissions to all trauma services for 2004



(NETS = Neonatal Emergency Transfer Service)

Figure 56. Frequency of helicopter arrivals by admission type for 2002-2004



Operating suite profile

Figure 57. Operating suite procedure percentage by top three mechanisms of injury for trauma admissions to all trauma services for 2004

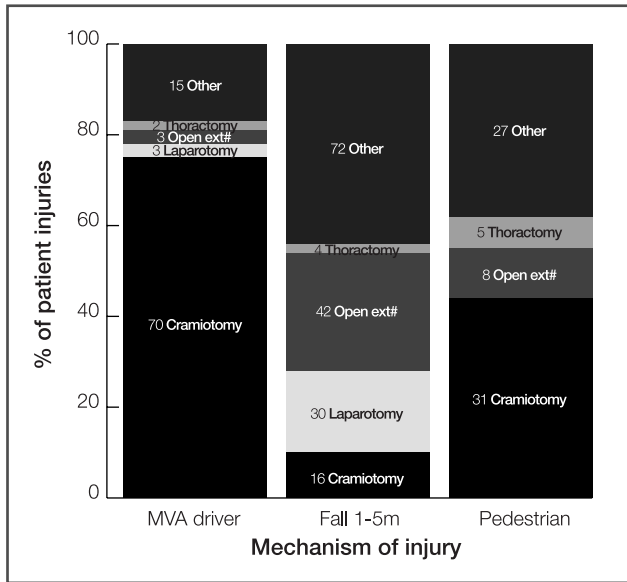
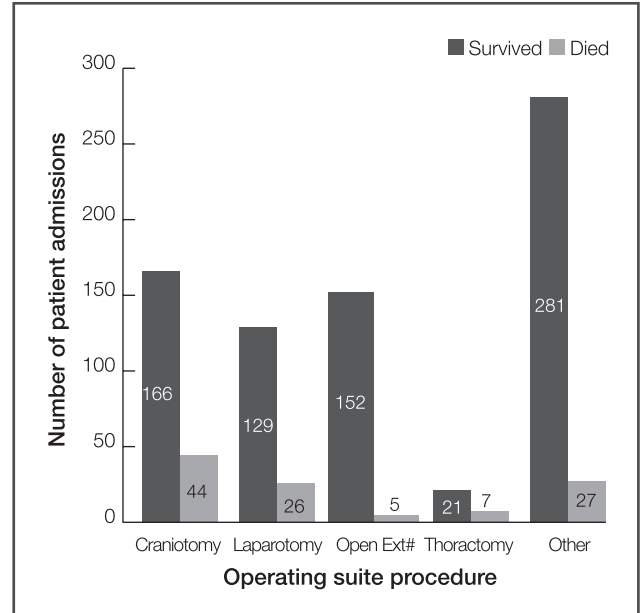


Figure 58. Outcomes for operating suite procedures for trauma admissions to all trauma services for 2004



Intensive care profile

Table 21. ICU admission by outcome and year

| LOS | Outcome – All | Outcome – Survived | Outcome – Died |
|------|---------------|--------------------|----------------|
| 2004 | 7.47 days | 7.71 days | 5.84 days |
| 2003 | 7.34 days | 7.78 days | 4.90 days |
| 2002 | 7.63 days | 8.11 days | 4.86 days |

Figure 59. ICU admissions by month for trauma admissions to all trauma services for 2002-2004

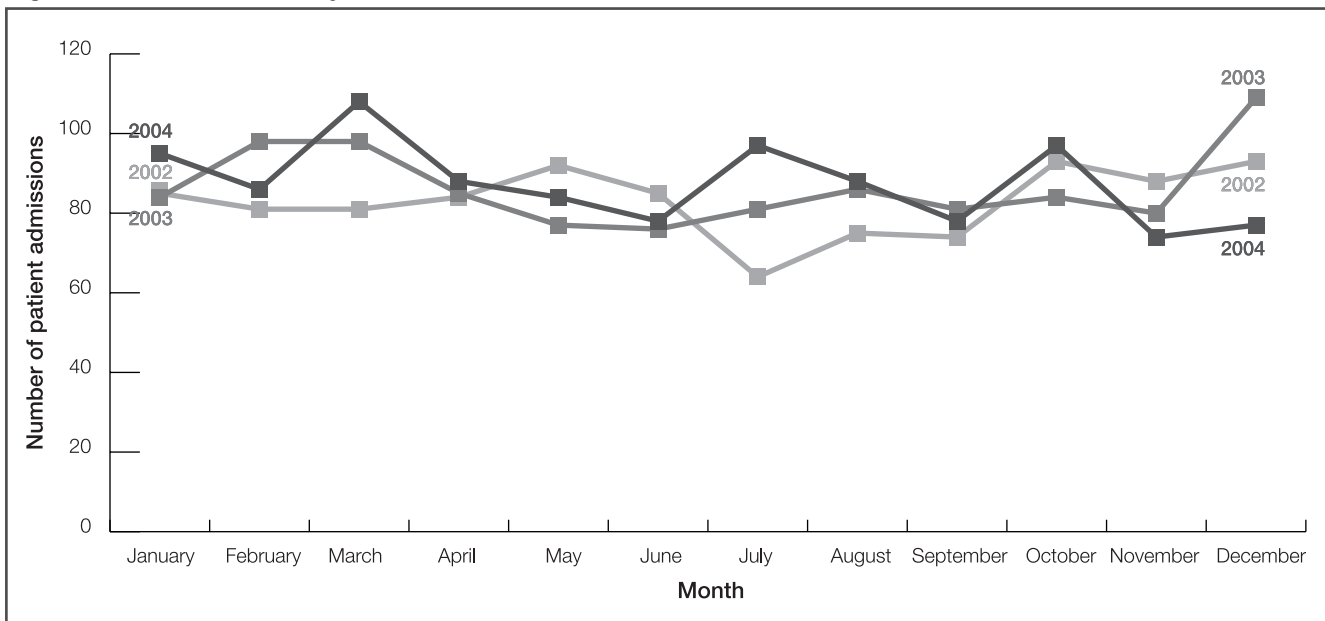


Figure 60. ICU admissions by month for trauma admissions to all trauma services for 2004

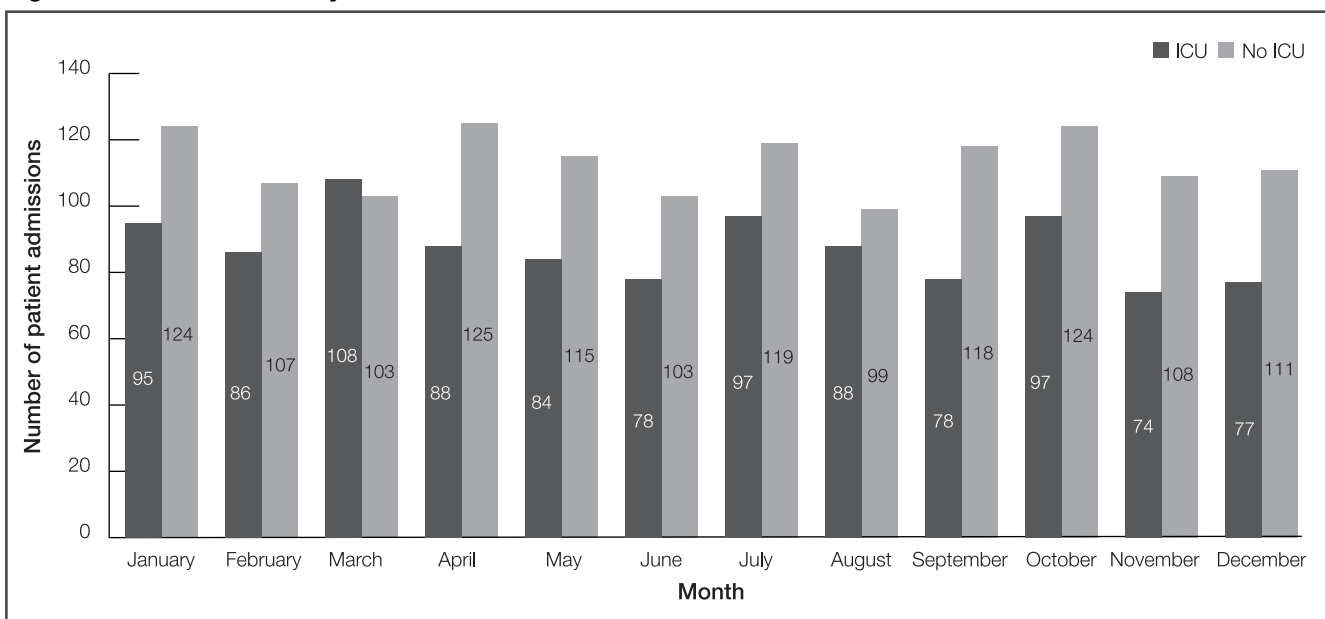


Figure 61. ICU admissions by age for trauma admissions to all trauma services for 2004

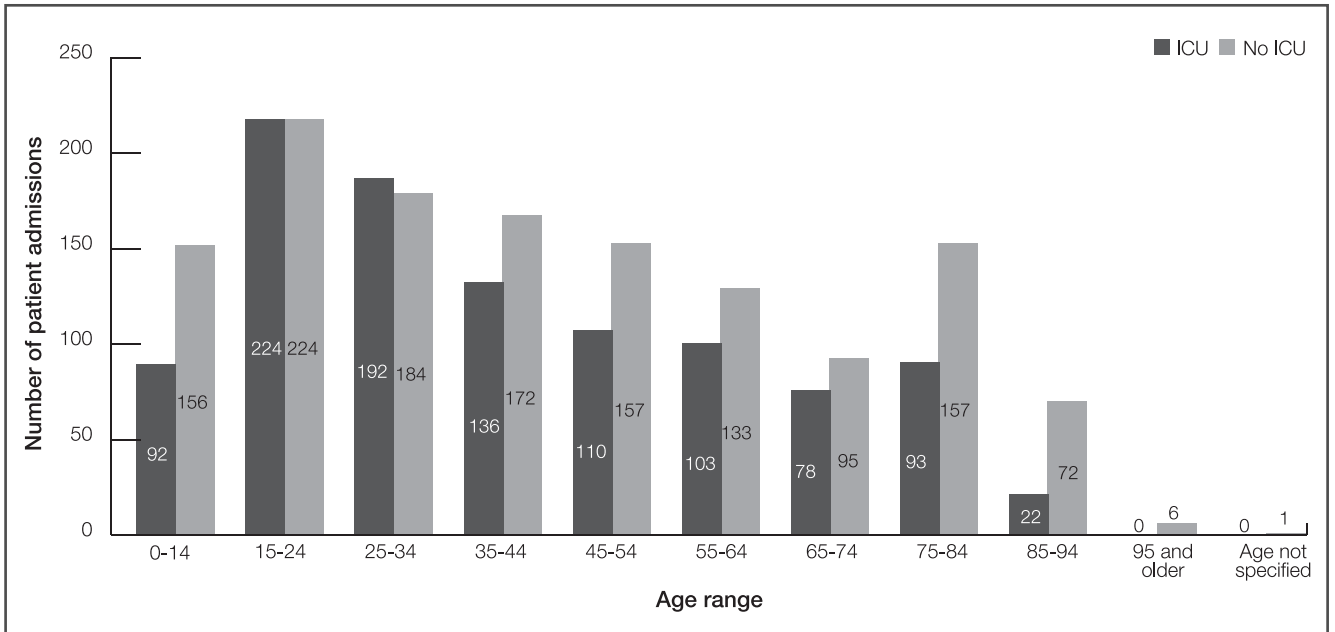


Figure 62. ICU admission percentages by arrival mode for trauma admissions to all trauma services for 2004

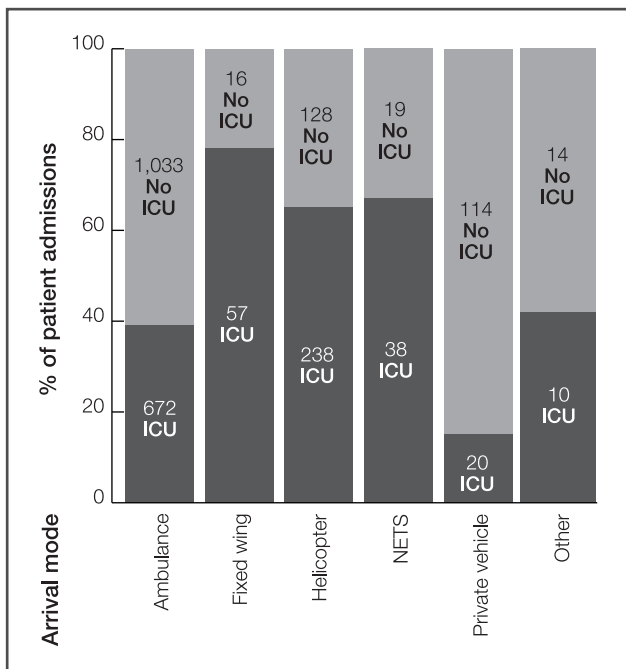
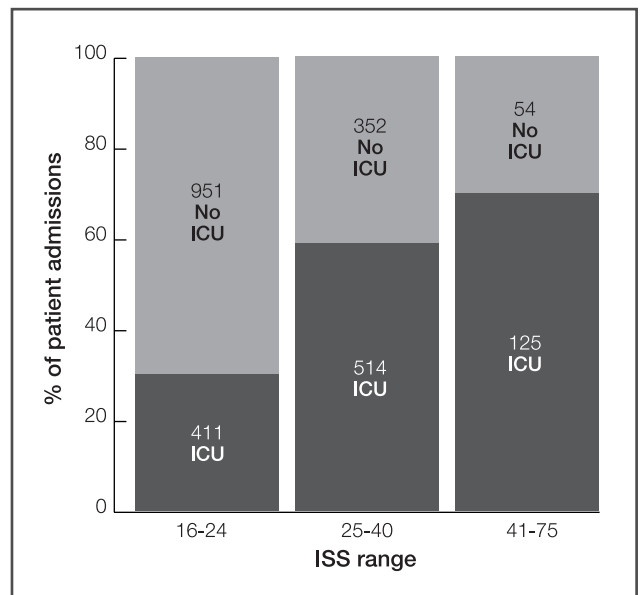
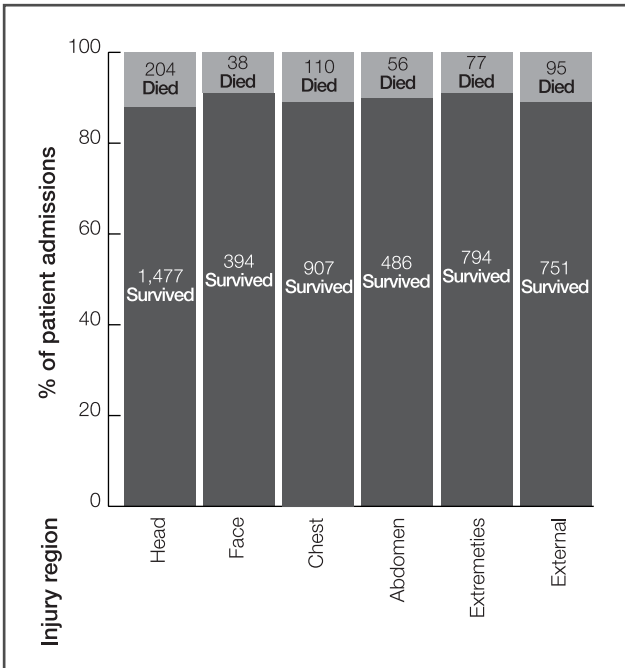


Figure 63. ICU admission percentages by injury severity score (ISS) range for trauma admissions to all trauma services for 2004



Injury region profile

Figure 64. Outcome percentages by injury regions for trauma patient admissions to all trauma services for 2004



Injury severity profile

Figure 66. Injury severity score (ISS) range percentages by age for trauma patient admissions to all trauma services for 2004

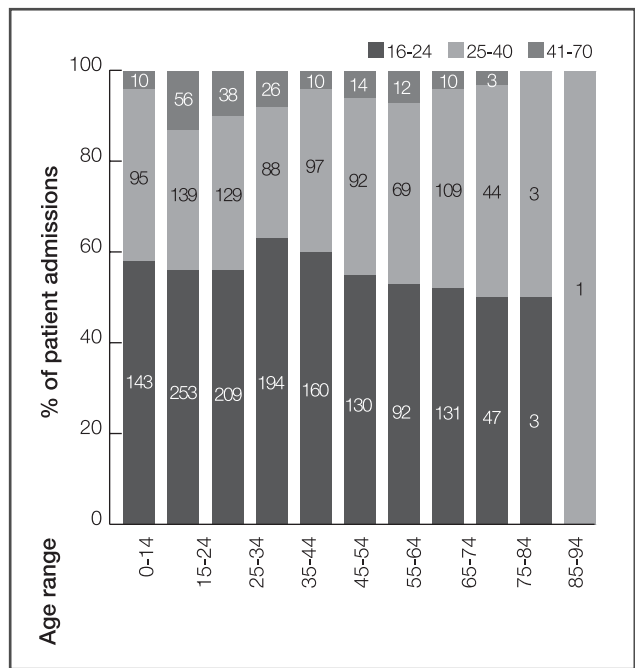


Figure 65. Injury Region percentages by age for trauma patient admissions to all trauma services for 2004

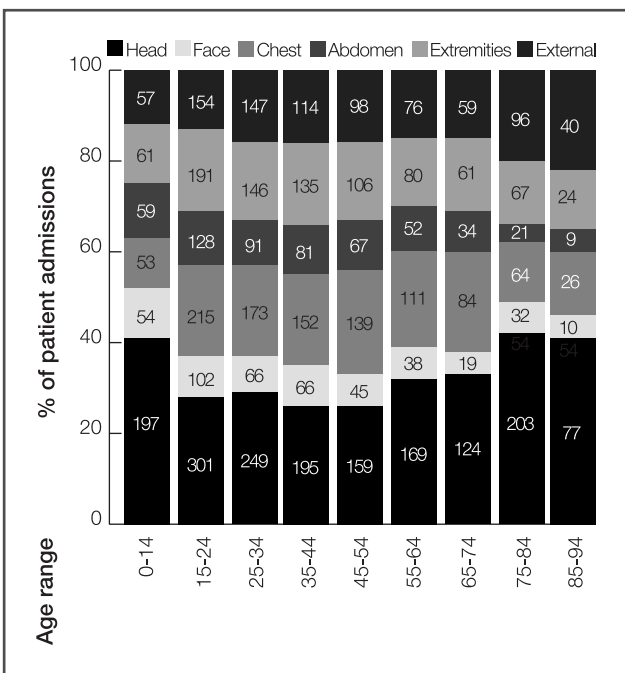


Figure 67. Injury severity score (ISS) range by arrival mode for trauma patient admissions to all trauma services for 2004

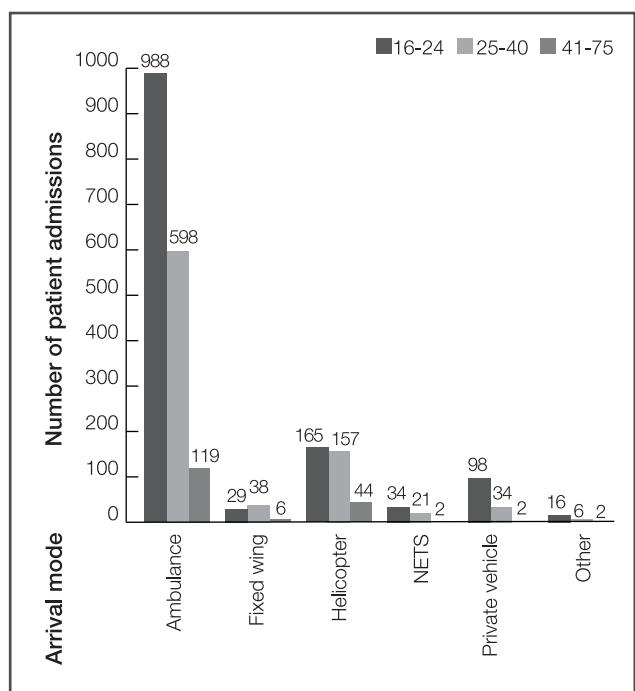


Figure 68. Outcome percentages by age for trauma patient admissions to all trauma services for 2004 with an injury severity score (ISS) in the range 16-24

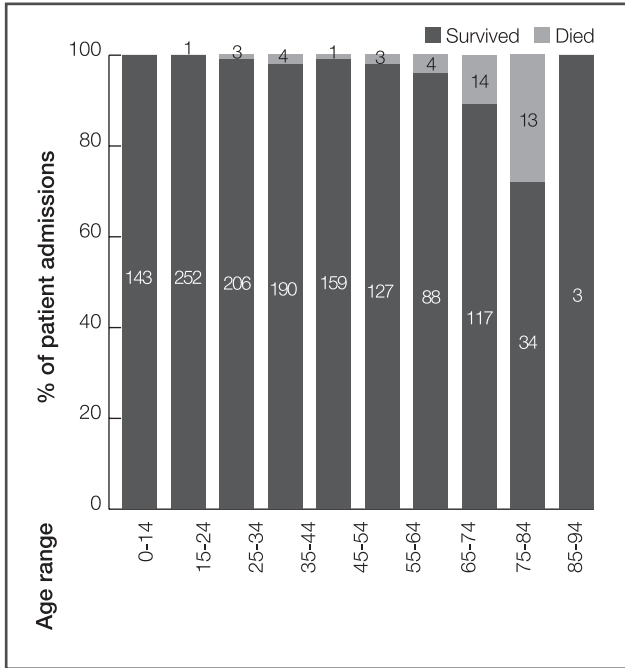


Figure 70. Outcome percentages by age for trauma patient admissions to all trauma services for 2004 with an injury severity score (ISS) in the range 41-75

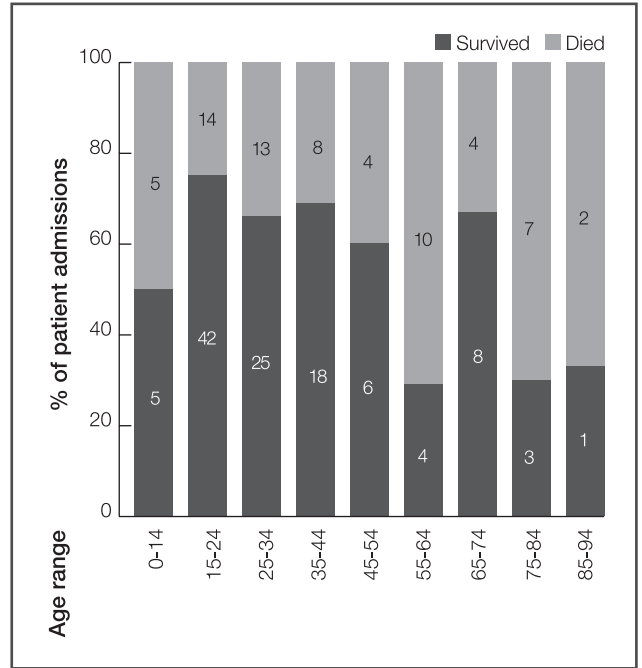


Figure 69. Outcome percentages by age for trauma patient admissions to all trauma services for 2004 with an injury severity score (ISS) in the range 25-40

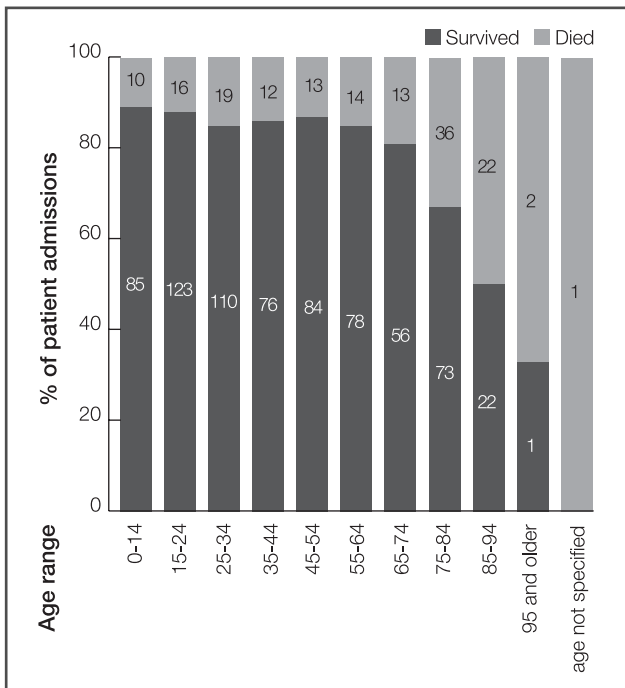


Figure 71. Admission type percentages by injury severity score (ISS) range for trauma patient admissions to all trauma services for 2004

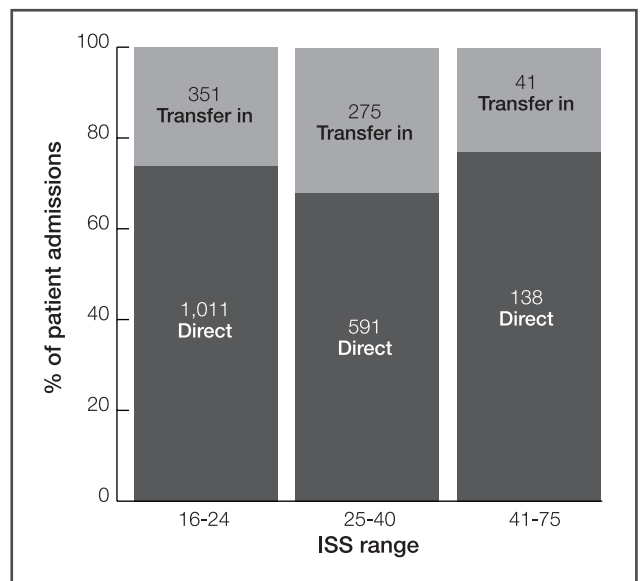


Figure 72. Admission type percentages by injury severity score (ISS) range for trauma patient admissions to all trauma services for 2004 of patients injured at metropolitan locations

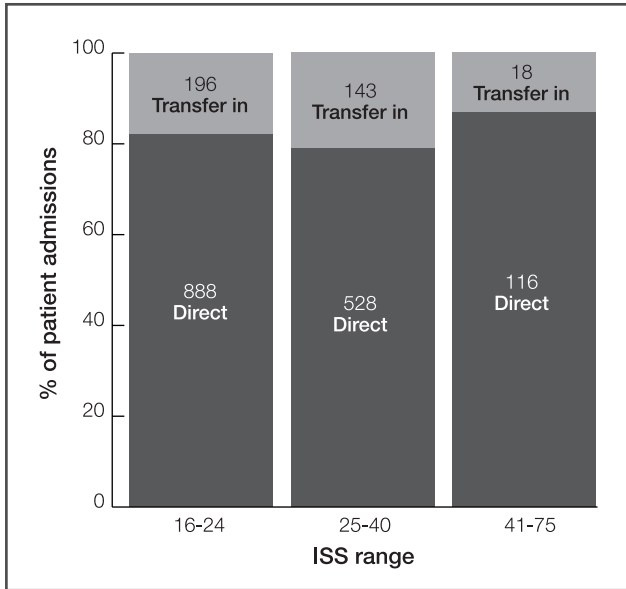
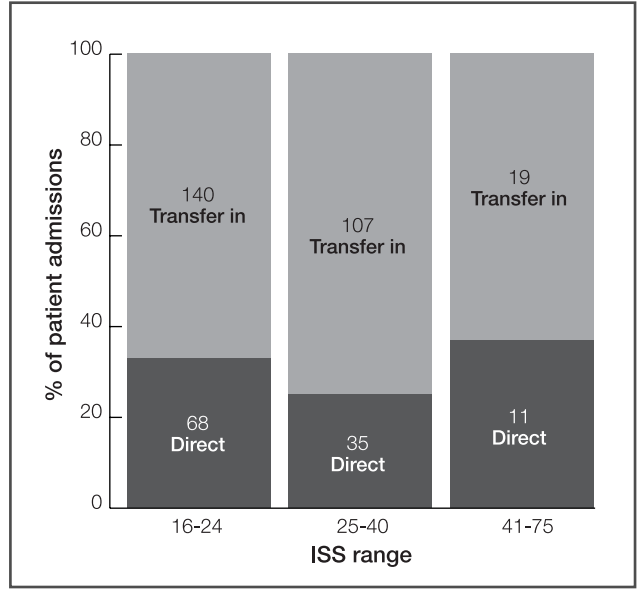


Figure 73. Admission type percentages by injury severity score (ISS) range for trauma patient admissions to all trauma services for 2004 of patients injured at rural locations



Length of stay

Figure 74. Hospital average length of stay (LOS) by age and gender for deceased trauma patient admissions to all trauma services for 2004

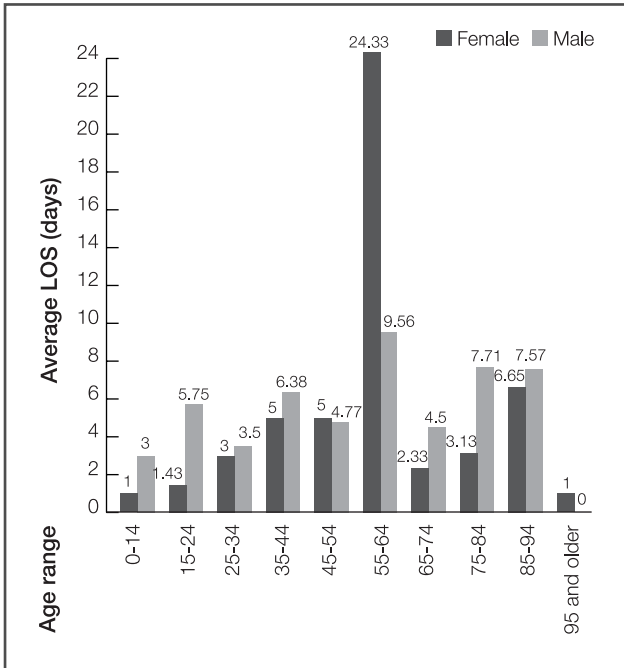


Figure 76. Hospital average length of stay (LOS) by age for low to medium fall (<5m) related trauma patient admissions to all trauma services for 2004

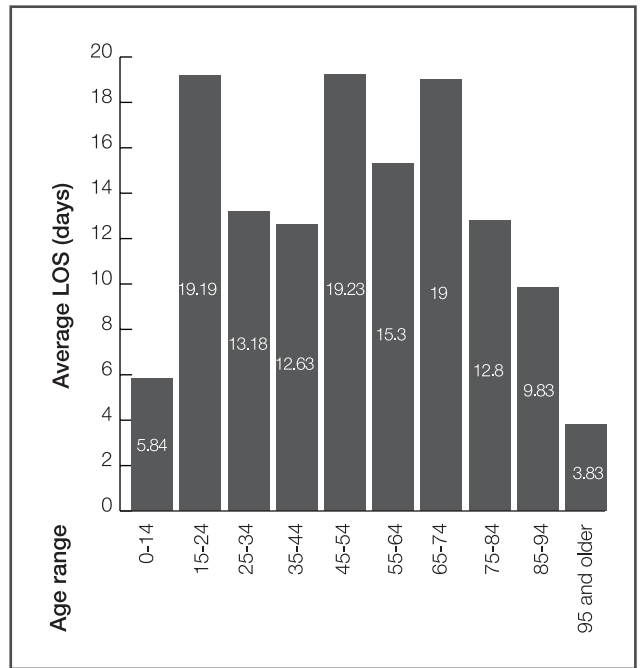


Figure 75. Hospital average length of stay (LOS) by age and injury severity score (ISS) range for trauma patient admissions to all trauma services for 2004

