

# Stakeholder Consultation

## Gladesville Campus Master Plan



# The Team

- Worley Parsons
- Randles Straatveit Architects
- KJA
- Hill PDA
- Jane Irwin Landscape Architecture
- McLaren Traffic Engineering
- HealthConsult



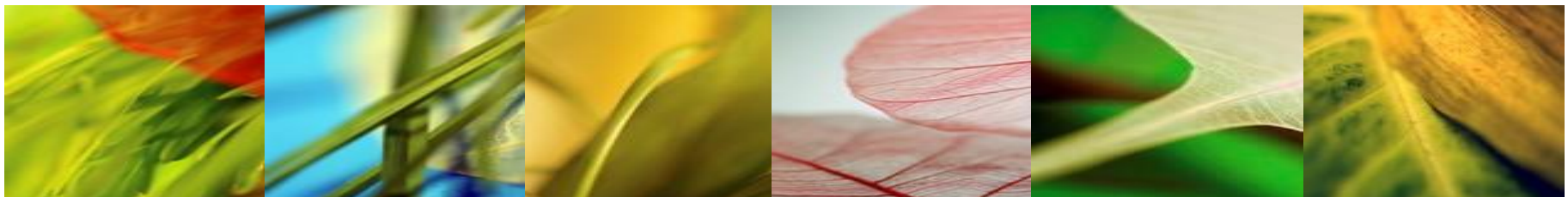
# Consultation process

- 3 x workshops
- 3 x Community Information Sessions
- Web page on NSW Health website
- Community Information Line: 1800 252 040
- Email: [gladesvillemasterplan@kjassoc.com.au](mailto:gladesvillemasterplan@kjassoc.com.au)
- Feedback forms



# Timeframes

Date	Activity
9 September 2011	Notification and invitation to workshops
19-21 September 2011	Stakeholder workshops
Late September-October 2011	Development of investigations + options
End October	Community Information Sessions
End November	Draft Master Plan



# Why?

## NSW Health wants you!

