



NSW Health Quarterly Hospital Performance Report

January to March, 2010

- Emergency Department activity
- Admitted Patients
- Elective Surgery

for

- Area Health Services
- Selected Hospitals



NSW Health Quarterly Hospital Performance Report January to March, 2010

NSW public hospitals at a glance

From January to March 2010 ...	For the same period last year...	The difference ...
There were 507,774 attendances at Emergency Departments	486,132 attendances	↑ 21,642 attendances (4.5%)
There were 111,400 admissions from Emergency Departments	106,659 admissions	↑ 4,741 admissions (4.4%)
There were 382,274 admitted patient episodes	368,414 episodes	↑ 13,860 episodes (3.8%)
The average length of stay for acute admitted patients was 3.5 days	3.6 days	↓ 0.1 days (2.8%)
The proportion of Elective Surgery patients treated 'on time' was 87%	90%	↓ 3.0%
There were 17,350 babies born	17,413 babies	↓ 63 (0.4%) babies

Source: Health Information Exchange, NSW Health. Data extracted on 28/04/2010

On average each day in NSW public hospitals* ...

5,642 people attend an Emergency Department

1,238 people are admitted from an Emergency Department

4,247 people are discharged from hospital

193 babies are born

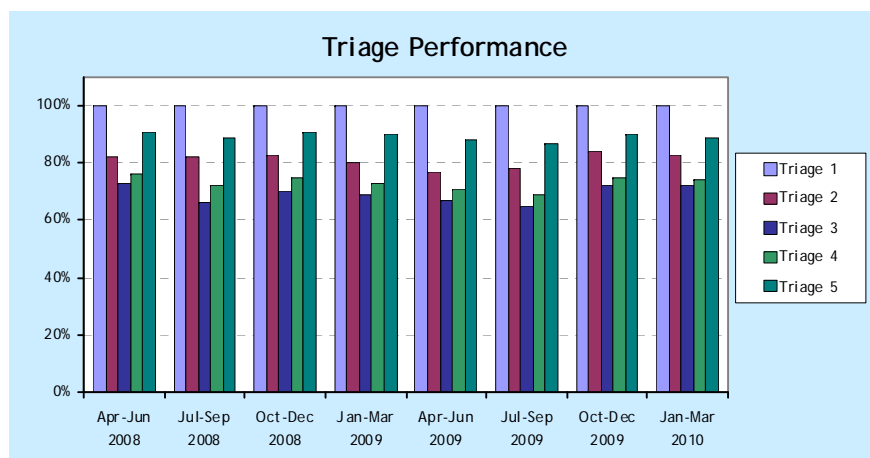
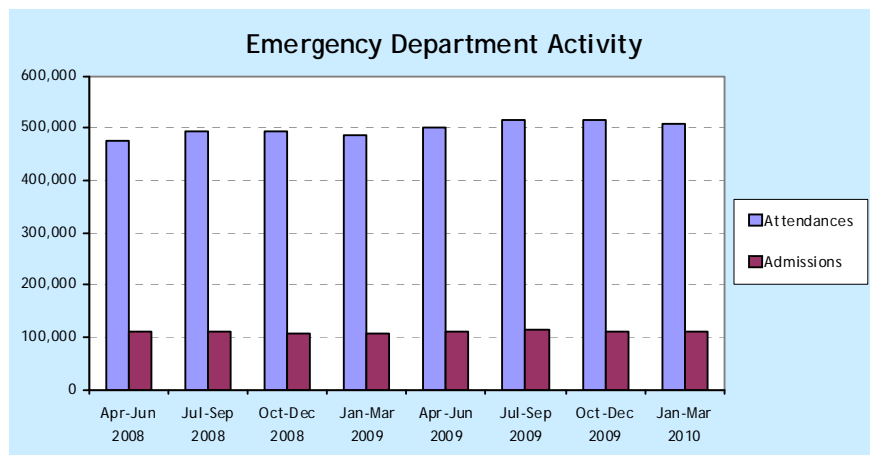
* Based on figures for January to March 2010



NSW Health Quarterly Hospital Performance Report January to March, 2010

Emergency Department activity

(Includes 85 facilities for which electronic data is reported. This covers 83% of NSW Emergency Department activity)



Attendances refers to presentations to Emergency Departments at public hospitals in New South Wales. Admissions includes patients admitted from the Emergency Department to a hospital ward, including Intensive Care Unit, or admitted via the operating suite.

	Apr-Jun 2008	Jul-Sep 2008	Oct-Dec 2008	Jan-Mar 2009	Apr-Jun 2009	Jul-Sep 2009	Oct-Dec 2009	Jan-Mar 2010
Attendances	477,668	494,162	494,309	486,132	501,553	517,453	514,733	507,774
Admissions	108,798	111,473	108,503	106,659	111,219	113,682	113,872	111,400

Source: Health Information Exchange, NSW Health. Data extracted on 28/04/2010

Triage Categories developed by the Australasian College for Emergency Medicine (ACEM) are used for rating clinical urgency in New South Wales public hospital Emergency Departments. Performance indicator thresholds recommended by the ACEM are:

- Triage 1 - 100% seen within 2 minutes
- Triage 2 - 80% seen within 10 minutes
- Triage 3 - 75% seen within 30 minutes
- Triage 4 - 70% seen within 1 hour
- Triage 5 - 70% seen within 2 hours

Off Stretcher Time (OST) performance refers to the percentage of patients arriving by ambulance who are transferred to the care of the Emergency Department within 30 minutes of arrival.

Emergency Admission Performance (EAP) is the percentage of admissions transferred from the Emergency Department to a ward or operating suite within 8 hours of commencement of active treatment.

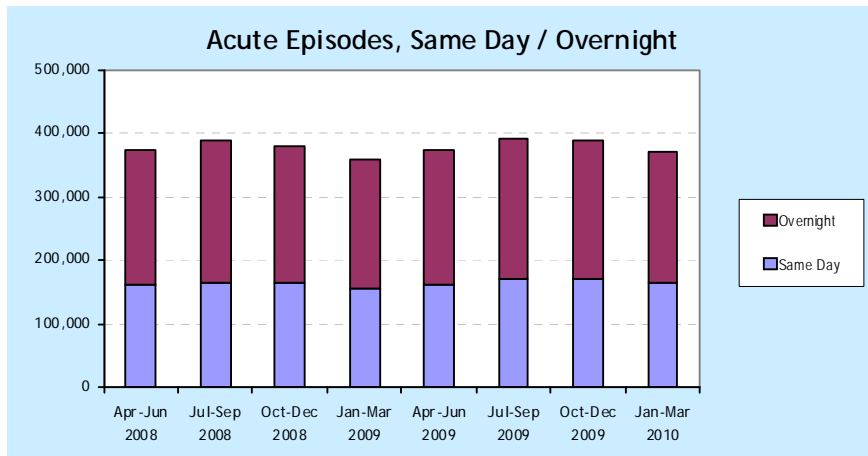
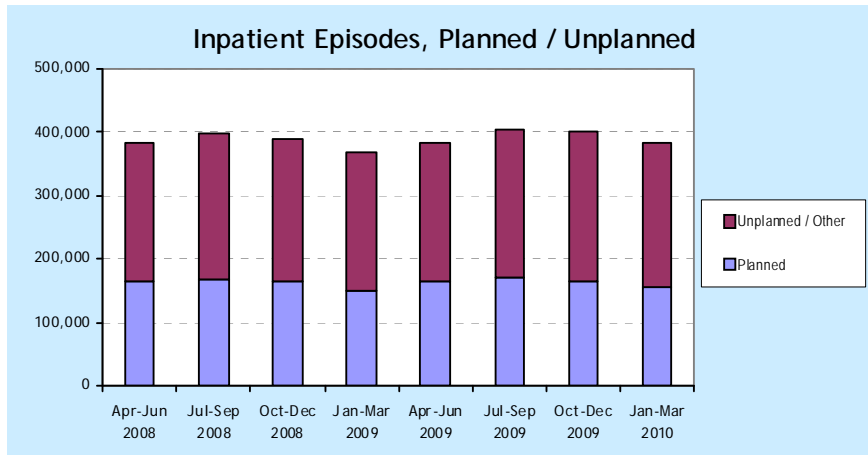
	Apr-Jun 2008	Jul-Sep 2008	Oct-Dec 2008	Jan-Mar 2009	Apr-Jun 2009	Jul-Sep 2009	Oct-Dec 2009	Jan-Mar 2010
Triage performance								
Triage 1	100%	100%	100%	100%	100%	100%	100%	100%
Triage 2	82%	82%	83%	80%	77%	78%	84%	83%
Triage 3	73%	66%	70%	69%	67%	65%	72%	72%
Triage 4	76%	72%	75%	73%	71%	69%	75%	74%
Triage 5	91%	89%	91%	90%	88%	87%	90%	89%
Off Stretcher Time	77%	70%	75%	74%	69%	66%	71%	70%
Emergency Admission Performance	78%	71%	76%	74%	72%	71%	76%	74%

Source: Health Information Exchange, NSW Health. Data extracted on 28/04/2010



NSW Health Quarterly Hospital Performance Report January to March, 2010

Admitted Patients – Public Hospitals



An admitted patient episode is a national standard measure referring to a defined period of care of a patient admitted to hospital. During a stay in hospital there can be one or more episodes, each defined by a Service Category such as Acute, Newborn, Rehabilitation, or Palliative Care.

Planned episodes include booked admissions for elective surgery or other procedures as well as regular planned same-day admissions, such as renal dialysis or chemotherapy. Unplanned/Other episodes include emergency, maternity and newborn admissions.

	Apr-Jun 2008	Jul-Sep 2008	Oct-Dec 2008	Jan-Mar 2009	Apr-Jun 2009	Jul-Sep 2009	Oct-Dec 2009	Jan-Mar 2010
Total Episodes	384,260	399,633	390,100	368,414	384,941	404,915	402,218	382,274
- Planned	164,186	166,679	164,036	150,147	163,402	169,684	166,019	156,215
- Unplanned/Other	220,074	232,954	226,064	218,267	221,539	235,231	236,199	226,059
Babies born	17,204	18,079	17,802	17,413	17,253	17,956	17,620	17,350

Source: Health Information Exchange, NSW Health. Data extracted on 28/04/2010

Acute episodes refer to episodes with a Service Category of Acute or Newborn. Episodes are classified as Same Day when admission and discharge are on the same date.

For Overnight episodes, Bed Days refers to the number of days between admission and discharge, excluding any leave days. Same Day episodes are each allocated one bed day.

Average Length of Stay is the sum of Acute bed days divided by acute episodes (including Same Day episodes).

	Apr-Jun 2008	Jul-Sep 2008	Oct-Dec 2008	Jan-Mar 2009	Apr-Jun 2009	Jul-Sep 2009	Oct-Dec 2009	Jan-Mar 2010
Acute Episodes	372,402	387,371	378,487	357,583	372,686	391,072	389,036	370,281
- Same Day	160,332	165,474	165,318	155,808	162,309	170,824	171,647	163,979
- Overnight	212,070	221,897	213,169	201,775	210,377	220,224	217,389	206,302
Bed Days	1,349,797	1,412,448	1,359,484	1,272,369	1,312,244	1,385,559	1,330,627	1,282,794
Avg Length of Stay	3.6	3.6	3.6	3.6	3.5	3.5	3.4	3.5

Source: Health Information Exchange, NSW Health. Data extracted on 28/04/2010



NSW Health Quarterly Hospital Performance Report January to March, 2010

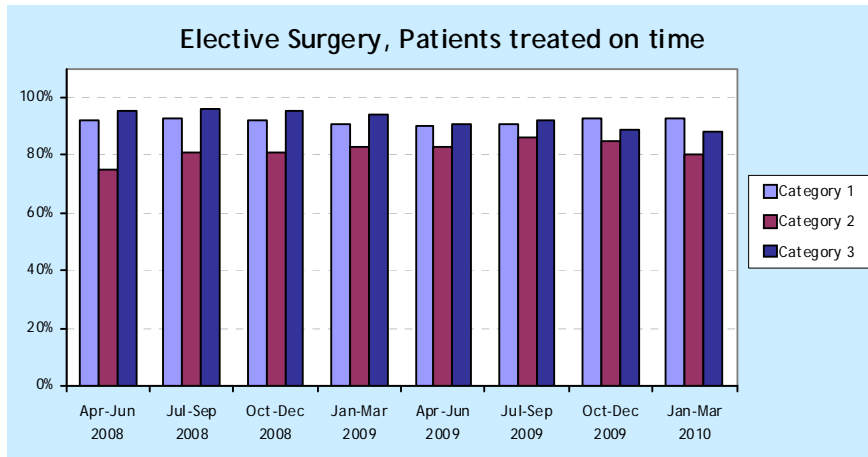
Elective Surgery

Elective Surgery refers to non-emergency procedures generally performed in an operating theatre, by a surgeon, under some form of anaesthesia. It excludes specific procedures frequently done by non-surgical clinicians.

All patients on the Elective Surgery Waiting List are allocated a Clinical Priority Category by the referring doctor. The categories are:

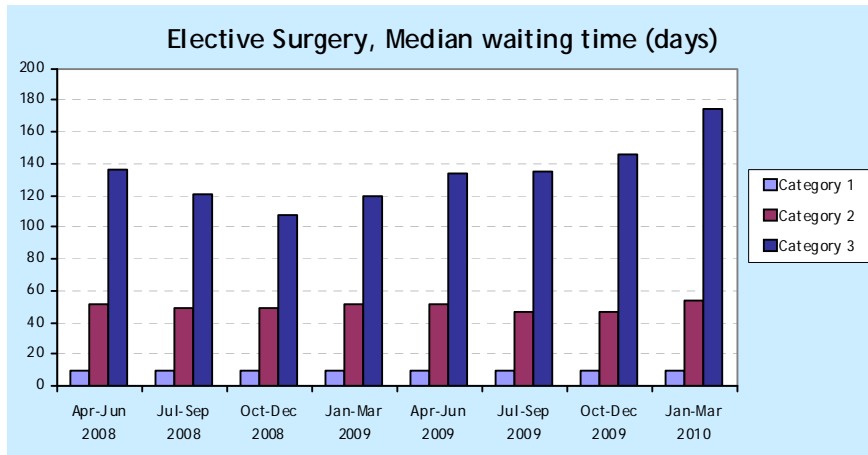
- Category 1 - Admission within 30 days desirable
- Category 2 - Admission within 90 days desirable
- Category 3 - Admission within 365 days desirable

Patients treated on time refers to the proportion of patients admitted from the Elective Surgery Waiting List who were admitted within the desirable timeframe for their Category.



	Apr-Jun 2008	Jul-Sep 2008	Oct-Dec 2008	Jan-Mar 2009	Apr-Jun 2009	Jul-Sep 2009	Oct-Dec 2009	Jan-Mar 2010
Patients treated on time - All Categories	87%	91%	90%	90%	88%	90%	89%	87%
Category 1	92%	93%	92%	91%	90%	91%	93%	93%
Category 2	75%	81%	81%	83%	83%	86%	85%	80%
Category 3	95%	96%	95%	94%	91%	92%	89%	88%

Source: Health Information Exchange, NSW Health. Data extracted on 28/04/2010



Median waiting time is the number of days within which half the patients admitted from the Waiting List (in the relevant category) were admitted for treatment.

	Apr-Jun 2008	Jul-Sep 2008	Oct-Dec 2008	Jan-Mar 2009	Apr-Jun 2009	Jul-Sep 2009	Oct-Dec 2009	Jan-Mar 2010
Median waiting time (days)								
Category 1	10	10	10	9	10	10	10	9
Category 2	52	49	49	52	51	46	47	54
Category 3	136	121	108	120	134	135	146	175

Source: Health Information Exchange, NSW Health. Data extracted on 28/04/2010



NSW Health Quarterly Hospital Performance Report January to March, 2010

Emergency Department activity by Hospital and Area Health Service

(Includes 85 facilities for which electronic data is reported. This covers over 83% of NSW Emergency Department activity)

Principal Referral Hospitals and Major Acute Hospitals are listed. Other hospitals are included in Area Totals.

January to March 2010	Activity Measures		Performance measures						
HOSPITAL / AREA HEALTH SERVICE	Attendances	Admissions	Triage performance					Off Stretcher Time	Emergency Admission Performance
			Triage 1	Triage 2	Triage 3	Triage 4	Triage 5		
THE CHILDREN'S HOSPITAL AT WESTMEAD									
THE CHILDREN'S HOSPITAL AT WESTMEAD	11,928	2,794	100%	100%	73%	71%	82%	95%	79%
GREATER SOUTHERN AREA HEALTH SERVICE									
Wagga Wagga Base Hospital	8,049	2,004	100%	82%	79%	77%	88%	63%	68%
Other GSAHS	9,201	1,483	100%	81%	72%	78%	94%	93%	95%
GREATER SOUTHERN AREA HEALTH SERVICE - TOTAL	17,250	3,487	100%	82%	75%	78%	92%	79%	80%
GREATER WESTERN AREA HEALTH SERVICE									
Dubbo Base Hospital	6,843	1,350	100%	85%	75%	75%	88%	NA	79%
Orange Base Hospital	6,559	1,350	100%	70%	71%	73%	87%	NA	67%
Other GWAHS	10,555	943	100%	81%	80%	83%	97%	NA	89%
GREATER WESTERN AREA HEALTH SERVICE - TOTAL	23,957	3,643	100%	80%	76%	78%	92%	NA	77%
HUNTER / NEW ENGLAND AREA HEALTH SERVICE									
Calvary Mater Newcastle	7,598	1,588	100%	63%	57%	59%	80%	57%	75%
John Hunter Hospital	15,978	4,718	100%	87%	73%	75%	89%	65%	76%
Maitland Hospital	10,334	1,677	100%	81%	73%	70%	91%	73%	78%
Manning Base Hospital	5,660	1,384	100%	63%	45%	45%	77%	67%	88%
Tamworth Base Hospital	10,982	1,693	100%	85%	61%	56%	81%	84%	87%
Other HNEAHS	41,074	4,551	100%	82%	82%	86%	97%	80%	95%
HUNTER / NEW ENGLAND AREA HEALTH SERVICE - TOTAL	91,626	15,661	100%	79%	71%	75%	91%	69%	84%



NSW Health Quarterly Hospital Performance Report January to March, 2010

Emergency Department activity by Hospital and Area Health Service

(Includes 85 facilities for which electronic data is reported. This covers over 83% of NSW Emergency Department activity)

Principal Referral Hospitals and Major Acute Hospitals are listed. Other hospitals are included in Area Totals.

January to March 2010 HOSPITAL / AREA HEALTH SERVICE	Activity Measures		Performance measures						
	Attendances	Admissions	Triage performance					Off Stretcher Time	Emergency Admission Performance
			Triage 1	Triage 2	Triage 3	Triage 4	Triage 5		
NORTH COAST AREA HEALTH SERVICE									
Coffs Harbour Base Hospital	8,916	1,826	100%	60%	58%	59%	81%	75%	62%
Lismore Base Hospital [*]	7,525	2,354	100%	73%	50%	55%	85%	75%	64%
Port Macquarie Base Hospital	7,478	1,818	100%	52%	54%	64%	89%	64%	63%
The Tweed Hospital [*]	10,546	3,757	100%	55%	69%	77%	92%	NA	69%
Other NCAHS [*]	14,000	1,611	100%	67%	65%	72%	91%	93%	89%
NORTH COAST AREA HEALTH SERVICE - TOTAL	48,465	11,366	100%	61%	61%	67%	88%	73%	69%
NORTH SYDNEY / CENTRAL COAST AREA HEALTH SERVICE									
Gosford Hospital	13,942	3,608	100%	65%	65%	62%	77%	69%	75%
Hornsby and Ku-Ring-Gai Hospital	7,592	1,744	100%	92%	82%	80%	90%	75%	68%
Manly District Hospital	5,656	1,427	100%	92%	90%	79%	92%	90%	77%
Mona Vale and District Hospital	6,631	1,446	100%	98%	88%	87%	96%	93%	70%
Royal North Shore Hospital	13,720	4,782	100%	86%	71%	76%	91%	57%	67%
Ryde Hospital	5,998	1,467	100%	94%	76%	78%	89%	85%	76%
Wyong Hospital	13,168	2,076	100%	77%	68%	68%	78%	72%	66%
NORTH SYDNEY / CENTRAL COAST AHS- TOTAL	66,707	16,550	100%	84%	75%	73%	85%	73%	71%

* In the January-March 2010 quarter, new clinical information systems were progressively installed at several North Coast hospitals. The transition to a different computer system caused some short term disruption to data collection used to calculate triage performance benchmarks. As a result, the reported figures underestimate the actual benchmark performance of the hospitals concerned.



NSW Health Quarterly Hospital Performance Report January to March, 2010

Emergency Department activity by Hospital and Area Health Service

(Includes 85 facilities for which electronic data is reported. This covers over 83% of NSW Emergency Department activity)

Principal Referral Hospitals and Major Acute Hospitals are listed. Other hospitals are included in Area Totals.

January to March 2010	Activity Measures		Performance measures						
	Attendances	Admissions	Triage performance					Off Stretcher Time	Emergency Admission Performance
			Triage 1	Triage 2	Triage 3	Triage 4	Triage 5		
HOSPITAL / AREA HEALTH SERVICE									
SOUTH EAST SYDNEY / ILLAWARRA AREA HEALTH SERVICE									
Prince of Wales Hospital*	11,325	4,204	100%	84%	43%	40%	71%	52%	73%
St George Hospital	14,674	5,002	100%	78%	61%	71%	82%	67%	68%
St Vincent's Hospital, Darlinghurst	10,828	2,922	100%	100%	71%	75%	88%	66%	76%
Sutherland Hospital	10,042	2,688	100%	89%	83%	87%	97%	63%	81%
Sydney Children's Hospital*	9,208	1,191	100%	95%	90%	78%	96%	95%	89%
Sydney Eye Hospital	4,876	168	NA	90%	91%	95%	99%	NA	100%
Sydney Hospital	5,043	414	100%	90%	86%	85%	96%	91%	97%
Wollongong Hospital	12,834	3,066	100%	92%	72%	66%	77%	61%	77%
Other SESIAHS	21,167	2,497	100%	93%	78%	78%	92%	70%	72%
SOUTH EAST SYDNEY / ILLAWARRA AHS - TOTAL	99,997	22,152	100%	89%	70%	74%	90%	65%	75%

* In the January-March 2010 quarter, new clinical information systems were progressively installed at several South Eastern Sydney Illawarra hospitals. The transition to a different computer system caused some short term disruption to data collection used to calculate triage performance benchmarks. As a result, the reported figures underestimate the actual benchmark performance of the hospitals concerned



NSW Health Quarterly Hospital Performance Report January to March, 2010

Emergency Department activity by Hospital and Area Health Service

(Includes 85 facilities for which electronic data is reported. This covers over 83% of NSW Emergency Department activity)

Principal Referral Hospitals and Major Acute Hospitals are listed. Other hospitals are included in Area Totals.

January to March 2010 HOSPITAL / AREA HEALTH SERVICE	Activity Measures		Performance measures						
	Attendances	Admissions	Triage performance					Off Stretcher Time	Emergency Admission Performance
			Triage 1	Triage 2	Triage 3	Triage 4	Triage 5		
SYDNEY SOUTH WEST AREA HEALTH SERVICE									
Bankstown / Lidcombe Hospital	10,829	3,027	100%	100%	82%	90%	97%	80%	79%
Campbelltown Hospital	12,659	3,099	100%	86%	79%	71%	90%	74%	66%
Canterbury Hospital	8,613	1,553	100%	96%	73%	68%	88%	77%	79%
Concord Hospital	7,858	2,180	100%	100%	80%	80%	96%	80%	73%
Fairfield Hospital	8,002	1,271	100%	83%	83%	81%	95%	89%	88%
Liverpool Hospital	15,423	5,311	100%	91%	86%	84%	92%	67%	70%
Royal Prince Alfred Hospital	15,976	4,549	100%	83%	70%	71%	89%	64%	70%
Other SSWAHS	7,279	707	100%	86%	82%	83%	96%	86%	88%
SYDNEY SOUTH WEST AREA HEALTH SERVICE - TOTAL	86,639	21,742	100%	90%	80%	78%	92%	74%	73%
SYDNEY WEST AREA HEALTH SERVICE									
Auburn Hospital	6,171	900	100%	98%	65%	57%	79%	73%	82%
Blacktown Hospital	8,783	1,958	100%	93%	85%	79%	89%	64%	59%
Mount Druitt Hospital	7,324	808	100%	90%	88%	80%	91%	78%	87%
Nepean Hospital	12,860	4,331	100%	81%	49%	60%	81%	58%	61%
Westmead Hospital (all units)	13,757	4,198	100%	82%	49%	55%	75%	54%	56%
Other SWAHS	12,310	1,860	100%	78%	86%	83%	96%	78%	88%
SYDNEY WEST AREA HEALTH SERVICE - TOTAL	61,205	14,055	100%	83%	68%	69%	86%	64%	66%
GRAND TOTAL	507,774	111,400	100%	83%	72%	74%	89%	70%	74%



NSW Health Quarterly Hospital Performance Report January to March, 2010

Admitted Patient activity by Hospital and Area Health Service

Principal Referral Hospitals and Major Acute Hospitals are listed. Other hospitals are included in Area Totals.

January to March 2010 HOSPITAL / AREA HEALTH SERVICE	All episodes			Acute Episodes			
	Total Episodes	Planned	Unplanned/ Other	Same Day	Overnight	Total Bed Days	Average Length of Stay
THE CHILDREN'S HOSPITAL AT WESTMEAD							
THE CHILDREN'S HOSPITAL AT WESTMEAD	6,853	3,676	3,177	3,188	3,665	20,383	3.0
GREATER SOUTHERN AREA HEALTH SERVICE							
Wagga Wagga Base Hospital	6,347	2,463	3,884	3,073	3,181	16,736	2.7
Other GSAHS	19,422	5,945	13,477	8,398	9,865	46,909	2.6
GREATER SOUTHERN AREA HEALTH SERVICE - TOTAL	25,769	8,408	17,361	11,471	13,046	63,645	2.6
GREATER WEST AREA HEALTH SERVICE							
Dubbo Base Hospital	4,619	2,023	2,596	1,980	2,583	11,807	2.6
Orange Base Hospital	4,514	2,128	2,386	2,017	2,435	10,982	2.5
Other GWAHS	12,180	4,045	8,135	5,338	6,461	36,101	3.1
GREATER WEST AREA HEALTH SERVICE - TOTAL	21,313	8,196	13,117	9,335	11,479	58,890	2.8
HUNTER / NEW ENGLAND AREA HEALTH SERVICE							
Calvary Mater Newcastle	3,078	927	2,151	861	2,113	12,167	4.1
John Hunter Hospital	17,837	9,746	8,091	8,968	8,528	56,117	3.2
Maitland Hospital	3,479	721	2,758	624	2,784	13,729	4.0
Manning Base Hospital	4,012	1,846	2,166	1,849	2,127	11,935	3.0
Tamworth Base Hospital	4,932	2,243	2,689	2,070	2,774	14,236	2.9
Other HNEAHS	12,400	4,357	8,043	4,121	7,987	62,837	5.2
HUNTER / NEW ENGLAND AREA HEALTH SERVICE - TOTAL	45,738	19,840	25,898	18,493	26,313	171,021	3.8



NSW Health Quarterly Hospital Performance Report January to March, 2010

Admitted Patient activity by Hospital and Area Health Service

Principal Referral Hospitals and Major Acute Hospitals are listed. Other hospitals are included in Area Totals.

January to March 2010	All episodes			Acute Episodes			
HOSPITAL / AREA HEALTH SERVICE	Total Episodes	Planned	Unplanned/ Other	Same Day	Overnight	Total Bed Days	Average Length of Stay
JUSTICE HEALTH							
JUSTICE HEALTH - TOTAL	772	561	211	28	556	11,866	20.3
NORTH COAST AREA HEALTH SERVICE							
Coffs Harbour Base Hospital	6,253	2,894	3,359	2,966	3,232	18,669	3.0
Lismore Base Hospital	5,908	2,695	3,213	2,468	3,438	20,289	3.4
Port Macquarie Base Hospital	4,382	1,844	2,538	1,685	2,696	15,933	3.6
The Tweed Hospital	7,569	2,937	4,632	3,354	4,214	20,366	2.7
Other NCAHS	13,166	6,202	6,964	6,905	5,813	38,031	3.0
NORTH COAST AREA HEALTH SERVICE - TOTAL	37,278	16,572	20,706	17,378	19,393	113,288	3.1
NORTH SYDNEY / CENTRAL COAST AREA HEALTH SERVICE							
Gosford Hospital	11,525	4,722	6,803	4,733	6,573	38,204	3.4
Hornsby and Ku-Ring-Gai Hospital	3,517	1,033	2,484	798	2,644	14,969	4.3
Manly District Hospital	3,412	715	2,697	1,061	2,255	12,512	3.8
Mona Vale and District Hospital	3,316	1,366	1,950	1,484	1,725	9,614	3.0
Royal North Shore Hospital	12,132	4,817	7,315	4,620	7,330	47,410	4.0
Ryde Hospital	2,480	573	1,907	820	1,534	9,523	4.0
Wyong Hospital	5,943	2,788	3,155	2,871	2,990	22,389	3.8
Other NSCCAHS	2,442	1,003	1,439	440	1,267	22,117	13.0
NORTH SYDNEY / CENTRAL COAST AHS - TOTAL	44,767	17,017	27,750	16,827	26,318	176,738	4.1



NSW Health Quarterly Hospital Performance Report January to March, 2010

Admitted Patient activity by Hospital and Area Health Service

Principal Referral Hospitals and Major Acute Hospitals are listed. Other hospitals are included in Area Totals.

January to March 2010	All episodes			Acute Episodes			
HOSPITAL / AREA HEALTH SERVICE	Total Episodes	Planned	Unplanned/ Other	Same Day	Overnight	Total Bed Days	Average Length of Stay
SOUTH EAST SYDNEY / ILLAWARRA AREA HEALTH SERVICE							
Prince of Wales Hospital	10,164	5,315	4,849	4,787	5,203	42,229	4.2
Royal Hospital for Women	3,484	496	2,988	938	2,545	12,938	3.7
St George Hospital	12,912	5,725	7,187	5,306	7,240	44,383	3.5
St Vincent's Hospital, Darlinghurst	9,496	4,814	4,682	5,508	3,988	31,221	3.3
Sutherland Hospital	6,131	2,266	3,865	2,054	3,594	20,048	3.5
Sydney Children's Hospital	3,758	1,850	1,908	1,694	2,063	9,924	2.6
Sydney/Sydney Eye Hospital	2,632	1,429	1,203	1,423	1,205	5,328	2.0
Wollongong Hospital	10,429	3,799	6,630	4,193	6,157	41,138	4.0
Other SESIAHS	12,924	5,185	7,739	5,312	5,099	35,014	3.4
SOUTH EAST SYDNEY / ILLAWARRA AHS - TOTAL	71,930	30,879	41,051	31,215	37,094	242,223	3.5
SYDNEY SOUTH WEST AREA HEALTH SERVICE							
Bankstown / Lidcombe Hospital	8,174	2,661	5,513	2,900	5,086	28,721	3.6
Campbelltown Hospital	7,077	1,840	5,237	1,791	5,274	28,089	4.0
Canterbury Hospital	3,972	1,006	2,966	1,037	2,817	12,101	3.1
Concord Hospital	11,744	7,671	4,073	7,103	4,418	43,399	3.8
Fairfield Hospital	3,821	870	2,951	862	2,848	11,654	3.1
Liverpool Hospital	20,216	10,196	10,020	12,132	7,837	59,229	3.0
Royal Prince Alfred Hospital	16,663	7,378	9,285	7,265	9,368	62,059	3.7
Other SSWAHS	5,373	1,785	3,588	1,508	2,668	14,235	3.4
SYDNEY SOUTH WEST AREA HEALTH SERVICE - TOTAL	77,040	33,407	43,633	34,598	40,316	259,487	3.5



NSW Health Quarterly Hospital Performance Report January to March, 2010

Admitted Patient activity by Hospital and Area Health Service

Principal Referral Hospitals and Major Acute Hospitals are listed. Other hospitals are included in Area Totals.

January to March 2010	All episodes			Acute Episodes			
HOSPITAL / AREA HEALTH SERVICE	Total Episodes	Planned	Unplanned/ Other	Same Day	Overnight	Total Bed Days	Average Length of Stay
SYDNEY WEST AREA HEALTH SERVICE							
Auburn Hospital	4,449	960	3,489	2,068	2,337	9,229	2.1
Blacktown Hospital	6,886	1,153	5,733	1,761	5,090	28,015	4.1
Mount Druitt Hospital	3,316	822	2,494	1,542	1,578	5,171	1.7
Nepean Hospital	12,292	3,489	8,803	4,493	7,633	40,653	3.4
Westmead Hospital (all units)	20,437	9,940	10,497	10,735	9,302	60,918	3.0
Other SWAHS	3,434	1,295	2,139	847	2,182	21,267	7.0
SYDNEY WEST AREA HEALTH SERVICE - TOTAL	50,814	17,659	33,155	21,446	28,122	165,253	3.3
GRAND TOTAL	382,274	156,215	226,059	163,979	206,302	1,282,794	3.5



NSW Health Quarterly Hospital Performance Report January to March, 2010

Elective Surgery Performance by Hospital and Area Health Service

Principal Referral Hospitals and Major Acute Hospitals are listed. Other hospitals are included in Area Totals.

January to March 2010	Patients treated on time				Median Waiting Time (days)		
HOSPITAL / AREA HEALTH SERVICE	All Categories	Category 1	Category 2	Category 3	Category 1	Category 2	Category 3
THE CHILDREN'S HOSPITAL AT WESTMEAD							
THE CHILDREN'S HOSPITAL AT WESTMEAD	81%	96%	61%	92%	6	70	50
GREATER SOUTHERN AREA HEALTH SERVICE							
Wagga Wagga Base Hospital	71%	93%	64%	68%	18	67	329
GREATER SOUTHERN AREA HEALTH SERVICE - TOTAL	82%	92%	74%	82%	15	60	282
GREATER WEST AREA HEALTH SERVICE							
Dubbo Base Hospital	96%	96%	96%	97%	13	34	84
Orange Base Hospital	84%	97%	85%	79%	14	58	339
GREATER WEST AREA HEALTH SERVICE - TOTAL	90%	96%	87%	90%	10	49	228
HUNTER / NEW ENGLAND AREA HEALTH SERVICE							
Calvary Mater Newcastle	82%	74%	93%	100%	20	54	134
John Hunter Hospital	83%	90%	78%	80%	11	55	236
Maitland Hospital	83%	87%	79%	86%	14	56	162
Manning Base Hospital	89%	94%	79%	90%	15	62	289
Tamworth Base Hospital	95%	99%	88%	100%	7	57	143
HUNTER / NEW ENGLAND AREA HEALTH SERVICE - TOTAL	88%	90%	86%	89%	12	50	187



NSW Health Quarterly Hospital Performance Report January to March, 2010

Elective Surgery Performance by Hospital and Area Health Service

Principal Referral Hospitals and Major Acute Hospitals are listed. Other hospitals are included in Area Totals.

January to March 2010	Patients treated on time				Median Waiting Time (days)		
HOSPITAL / AREA HEALTH SERVICE	All Categories	Category 1	Category 2	Category 3	Category 1	Category 2	Category 3
NORTH COAST AREA HEALTH SERVICE							
Coffs Harbour Base Hospital	65%	78%	62%	60%	18	84	355
Lismore Base Hospital	81%	94%	66%	84%	8	67	147
Port Macquarie Base Hospital	76%	86%	59%	80%	15	82	221
The Tweed Hospital	80%	79%	66%	91%	15	65	159
NORTH COAST AREA HEALTH SERVICE - TOTAL	78%	86%	67%	80%	14	68	249
NORTH SYDNEY / CENTRAL COAST AREA HEALTH SERVICE							
Gosford Hospital	68%	97%	55%	64%	16	84	300
Hornsby and Ku-Ring-Gai Hospital	91%	100%	88%	88%	4	39	108
Manly District Hospital	98%	99%	96%	98%	4	28	63
Mona Vale and District Hospital	97%	99%	99%	96%	3	28	30
Royal North Shore Hospital	87%	93%	70%	97%	6	61	133
Ryde Hospital	98%	100%	96%	99%	8	47	112
Wyong Hospital	85%	97%	65%	96%	15	66	210
NORTH SYDNEY / CENTRAL COAST AHS - TOTAL	84%	96%	70%	88%	7	62	146



NSW Health Quarterly Hospital Performance Report January to March, 2010

Elective Surgery Performance by Hospital and Area Health Service

Principal Referral Hospitals and Major Acute Hospitals are listed. Other hospitals are included in Area Totals.

January to March 2010	Patients treated on time				Median Waiting Time (days)		
HOSPITAL / AREA HEALTH SERVICE	All Categories	Category 1	Category 2	Category 3	Category 1	Category 2	Category 3
SOUTH EAST SYDNEY / ILLAWARRA AREA HEALTH SERVICE							
Prince of Wales Hospital	83%	93%	84%	72%	10	50	299
Royal Hospital for Women	99%	99%	99%	100%	6	37	55
St George Hospital	81%	91%	69%	81%	13	57	217
St Vincent's Hospital, Darlinghurst	90%	93%	77%	93%	5	42	103
Sutherland Hospital	86%	88%	76%	92%	12	68	210
Sydney Children's Hospital	88%	100%	80%	97%	4	33	138
Sydney/Sydney Eye Hospital	94%	98%	96%	93%	10	49	298
Wollongong Hospital	87%	86%	76%	93%	8	64	97
SOUTH EAST SYDNEY / ILLAWARRA AHS - TOTAL	88%	91%	82%	91%	8	53	216
SYDNEY SOUTH WEST AREA HEALTH SERVICE							
Bankstown / Lidcombe Hospital	86%	86%	76%	93%	15	71	154
Campbelltown Hospital	90%	82%	84%	95%	18	63	132
Canterbury Hospital	85%	98%	80%	86%	14	65	279
Concord Hospital	98%	98%	96%	99%	7	47	104
Fairfield Hospital	75%	99%	99%	62%	11	52	316
Liverpool Hospital	92%	97%	82%	93%	8	55	165
Royal Prince Alfred Hospital	99%	99%	100%	100%	5	17	15
SYDNEY SOUTH WEST AREA HEALTH SERVICE - TOTAL	93%	96%	90%	93%	7	45	108



NSW Health Quarterly Hospital Performance Report January to March, 2010

Elective Surgery Performance by Hospital and Area Health Service

Principal Referral Hospitals and Major Acute Hospitals are listed. Other hospitals are included in Area Totals.

January to March 2010	Patients treated on time				Median Waiting Time (days)		
HOSPITAL / AREA HEALTH SERVICE	All Categories	Category 1	Category 2	Category 3	Category 1	Category 2	Category 3
SYDNEY WEST AREA HEALTH SERVICE							
Auburn Hospital	89%	95%	80%	94%	8	66	242
Blacktown Hospital	88%	94%	74%	92%	10	54	167
Mount Druitt Hospital	75%	91%	63%	80%	9	65	191
Nepean Hospital	80%	93%	69%	74%	10	70	204
Westmead Hospital (all units)	92%	97%	87%	89%	8	36	127
SYDNEY WEST AREA HEALTH SERVICE - TOTAL	86%	95%	78%	83%	9	55	187
GRAND TOTAL	87%	93%	80%	88%	9	54	175