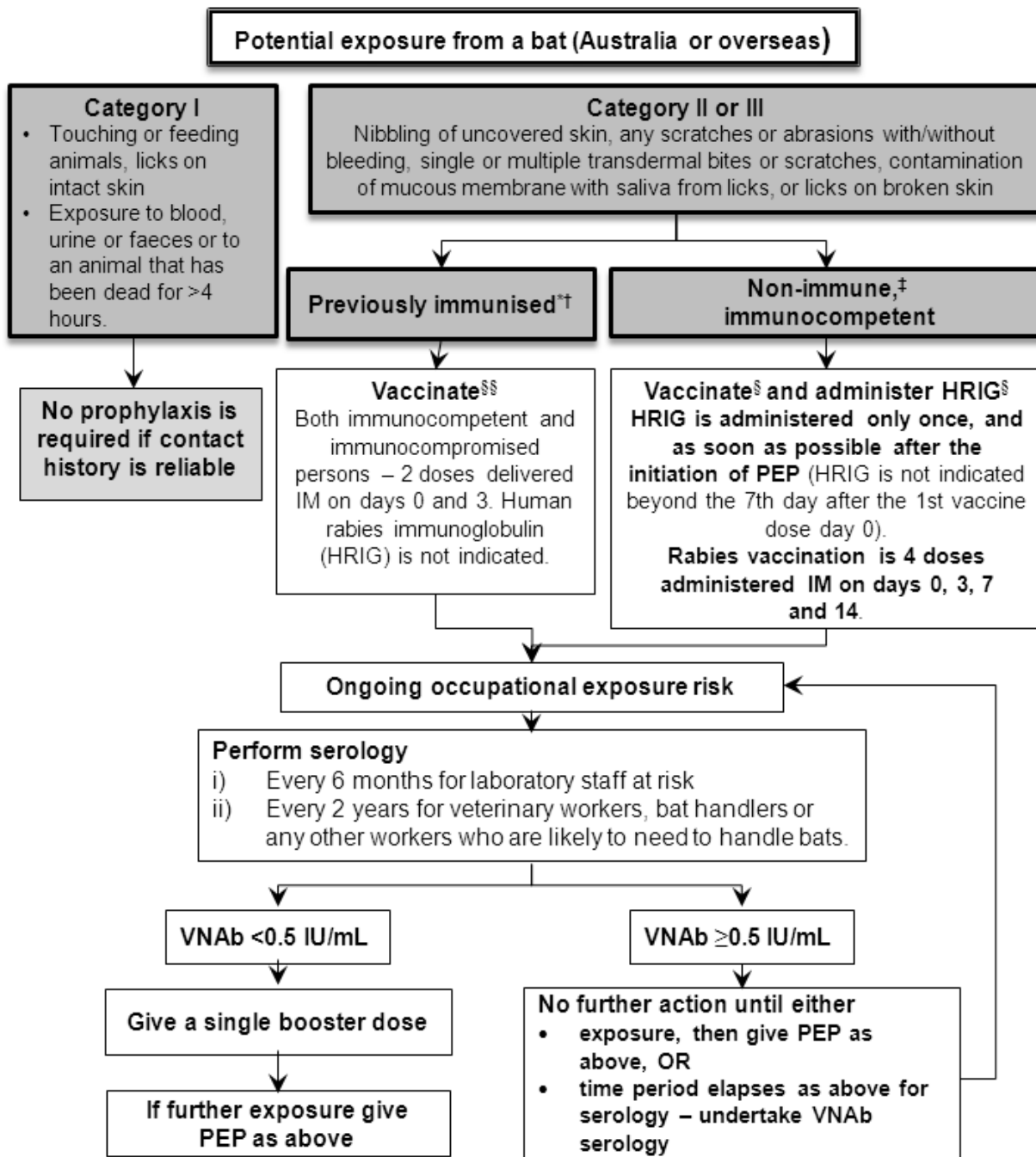


## Appendix 3. Post-exposure management algorithm for potential exposure to lyssaviruses from bats in Australia or overseas



§ Immunocompromised persons, not previously vaccinated, should receive 5 doses of vaccine on days 0, 3, 7, 14 and 28. Serology should be checked 14 to 21 days post dose 5 and a further dose offered if the result is <0.5 IU/mL. In immunocompromised persons, HRIG should be administered if a Category II or III exposure.

§§ Immunocompromised persons, previously immunised, should have serological testing 14 to 21 days after the 2nd dose to confirm acceptable VNA<sub>b</sub> levels. If the results is <0.5 IU/mL, expert advice should be sought regarding the total number of doses required for PEP.

\* If in doubt, treat as non-immune.

† **Previously immunised** – documentation of a completed recommended PreP or PEP rabies vaccine regimen. This is irrespective of the time period since the last dose was administered. This may either be a completed primary pre-exposure course or post-exposure course and includes those where subsequent boosting has occurred or documented rabies antibody (VNA<sub>b</sub>) titres of ≥0.5 IU/mL.

‡ **Non-immune** – person who has never received pre- or post-exposure immunisation with rabies vaccine or has had incomplete/inadequate primary vaccination course