

Influenza is at a moderate level of activity. COVID-19 is at a low level of activity. RSV is at a low level of activity.

Summary

While some influenza indicators have declined, overall activity is stable but still at a moderate level, which is unusual for this time of year. COVID-19 is stable at a low level of activity. RSV is at a low level of activity.

Data sources and methods

NSW Health continually reviews the methods used to monitor respiratory virus activity in New South Wales. This is due to changes in testing, notification patterns and levels of respiratory virus, including COVID-19, in the community. These changes affect the usefulness of notifications for monitoring virus activity and community transmission over time. The Public Health, Rapid, Emergency and Syndromic Surveillance (PHREDSS) data, COVID-19 Wastewater Surveillance Program, Whole Genome Sequencing (WGS) data and the NSW Sentinel Laboratory Network results are currently of most value for monitoring COVID-19 and other respiratory viruses of importance in the community. Public registration of positive COVID-19 rapid antigen tests (RAT) in NSW ceased on 30 September 2023. NSW Health also monitors COVID-19 [outbreaks in residential aged-care facilities](#) that are published by the Australian Government and COVID-19 antiviral prescriptions dispensed in NSW.

The data source for this report updates as new information becomes available. Therefore, this report cannot be directly compared to previous versions of the NSW Respiratory Surveillance Report or to previous reporting periods. For additional information on the data sources and methods presented within this report please refer to [COVID-19 surveillance report data sources and methodology](#).

Public Health Rapid, Emergency, Disease and Syndromic Surveillance

The PHREDSS system provides daily information about presentations to NSW public hospital emergency departments and subsequent admission to hospital categorised by symptom profile. Here we report on COVID-19, influenza-like illness and bronchiolitis (which is mainly caused by respiratory syncytial virus, RSV, though can be caused by other respiratory infections). These PHREDSS indicators, particularly the number of people admitted to hospital, are useful for monitoring the severity of illness and the impact on the health system.

Interpretation: Emergency Department (ED) presentations and admissions for COVID-19 remained stable at a low level in the last week. ED presentations for influenza-like-illness increased slightly in the last week but remained at a moderate level. ED presentations and admissions for bronchiolitis in young children increased in the last week but remained at a low level. For children under 5 years of age with bronchiolitis, 72.6% of presentations and 70.8% of admissions, were for infants less than one year old.

Figure 1. 'COVID-19' weekly counts of unplanned emergency department (ED) presentations and admission following presentation, 1 May 2024 - 2 November 2025, persons of all ages

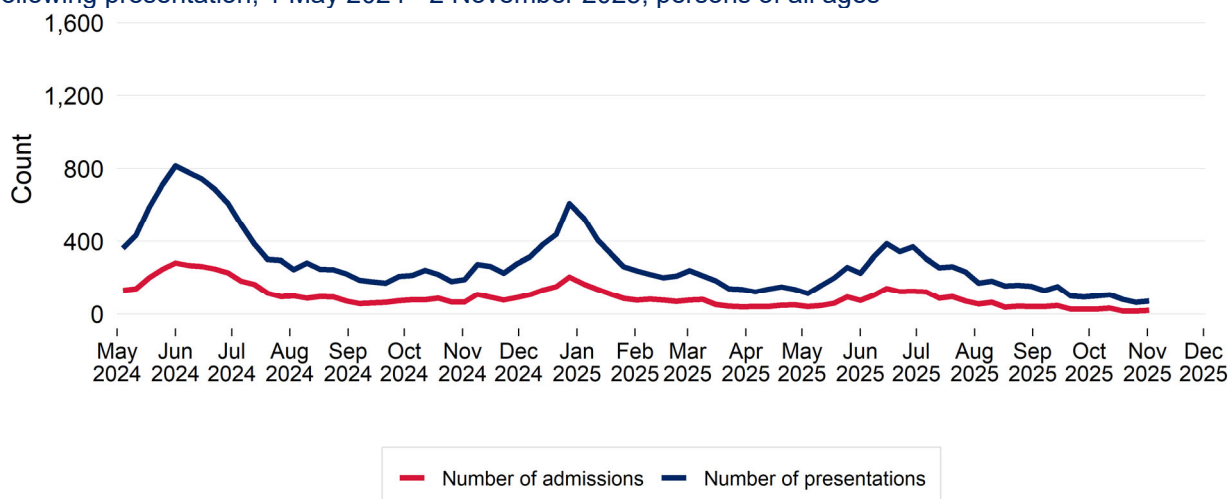


Figure 2. 'Influenza-like illness' weekly counts of unplanned emergency department (ED) presentations and admission following presentation, 1 May 2024 - 2 November 2025, persons of all ages

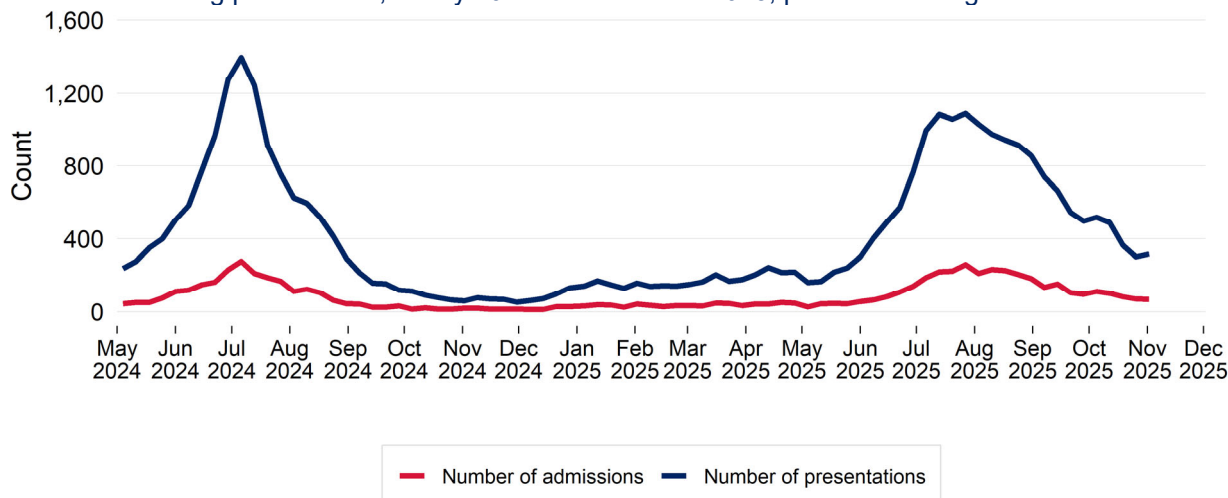
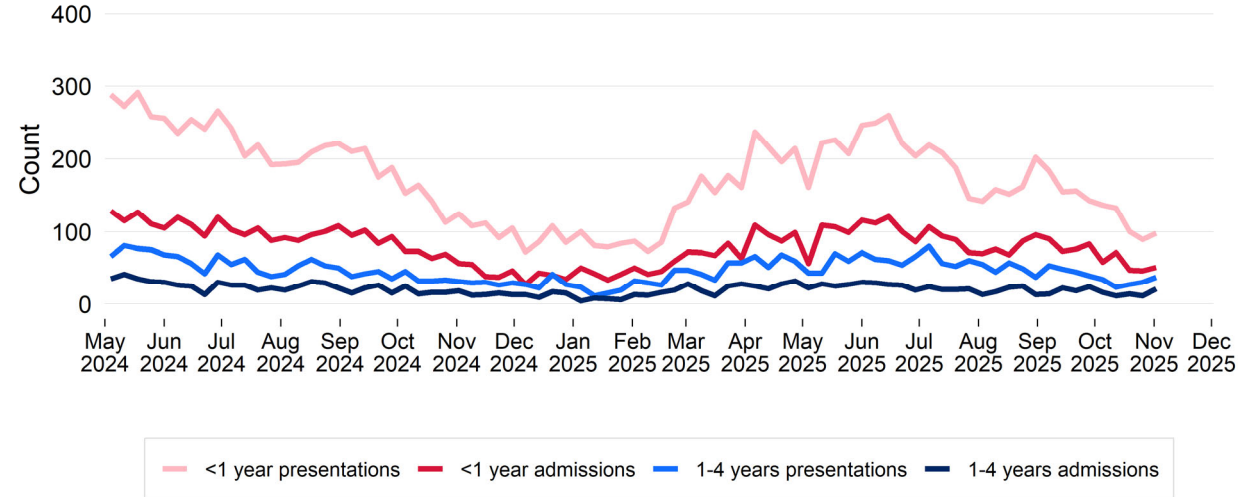


Figure 3. Bronchiolitis weekly counts of unplanned emergency department (ED) presentations and admission following presentation, 1 May 2024 - 2 November 2025, children aged 0-4 years



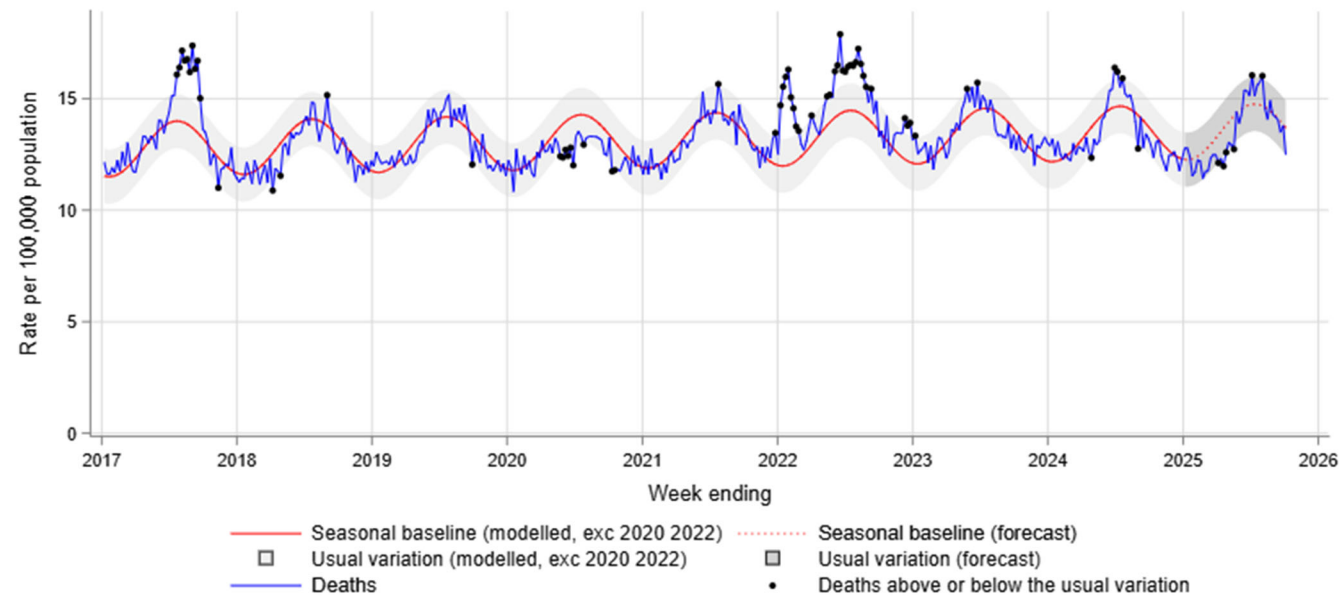
Death surveillance

All-cause mortality

The model for rapid surveillance of excess all-cause mortality in NSW is updated annually, and has a focus on surveillance for increased mortality in recent months. The model outputs for the current year should not be directly compared to previous years' outputs, due to a change in the baseline of the model. The NSW model supports surveillance of the impact of circulating viruses such as COVID-19 and influenza on all-cause mortality. This is not the same approach as that used by the [ABS](#) or by the [Actuaries](#) Institute to examine excess mortality associated with COVID-19 during the pandemic period. These approaches modelled excess mortality in the absence of COVID-19.

Interpretation: Weekly lag adjusted all-cause mortality is below the seasonal baseline (red line) and within the lower threshold of the usual variation band (grey shading).

Figure 4. All-cause death rate per 100,000 population, all ages, 1 January 2017 to 5 October 2025



Notes:

In this report, due to the time interval between a death occurring and the date on which the death is registered, only deaths reported 4 weeks prior to the date of analysis are used. Deaths are lag adjusted for the weeks ending 31 August 2025 to 5 October 2025. For additional information see [COVID-19 surveillance report data sources and methodology](#) for details.

Notifications of COVID-19, influenza and RSV

Notification data is obtained from laboratory tests for infections. This indicator provides information about community infection.

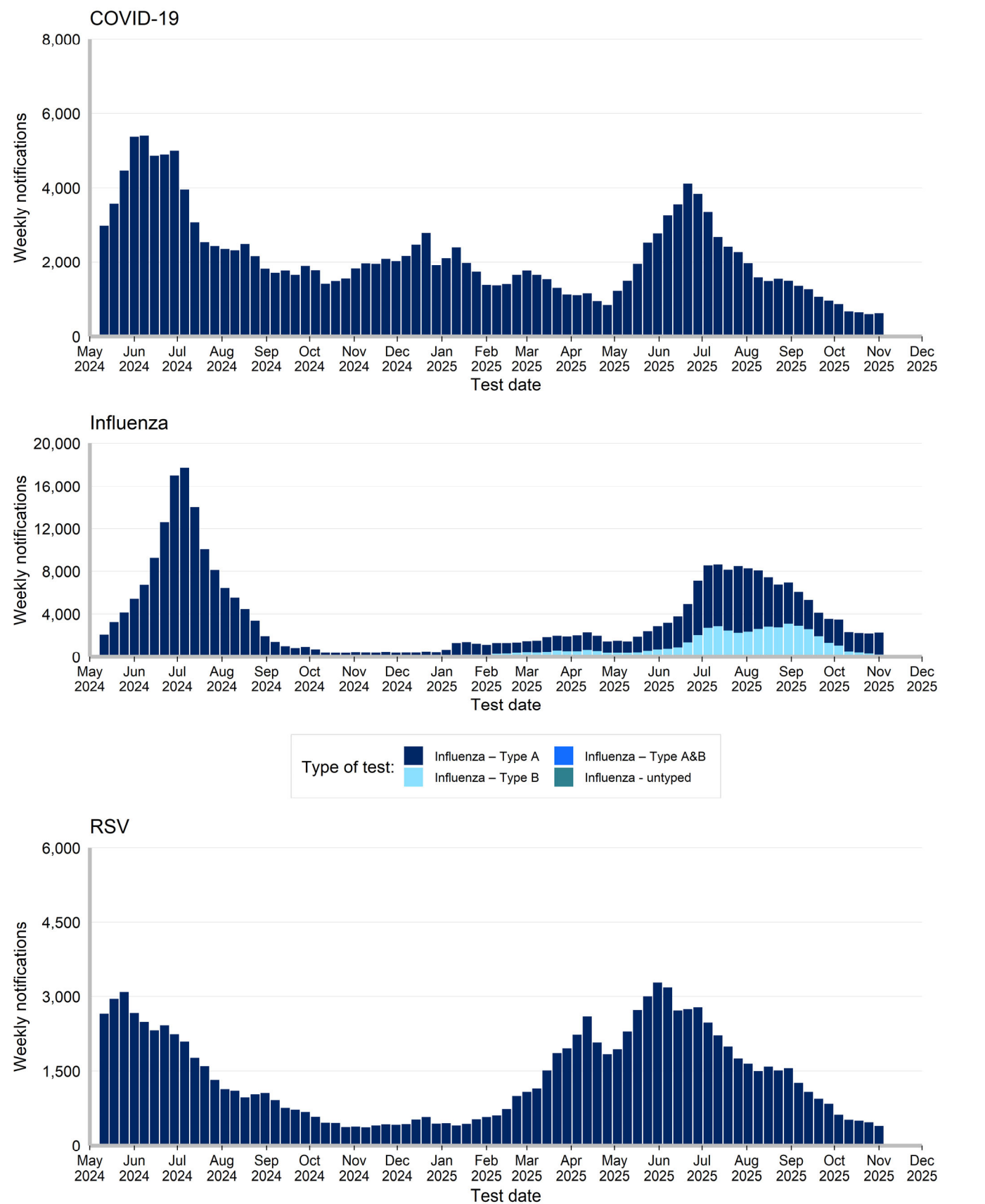
Interpretation: In the past week there was an increase of 4.9% in COVID-19 notifications, an increase of 4.7% in influenza notifications, and a decrease of 15.8% in RSV notifications.

Table 1: Notifications of COVID-19, influenza and RSV, NSW, tested in the week ending 1 November 2025

	COVID		Influenza		RSV	
	Week ending 1 November 2025	Year to Date	Week ending 1 November 2025	Year to Date	Week ending 1 November 2025	Year to Date
Gender						
Female	366	44,345 (58%)	1,165	82,292 (52%)	231	36,368 (53%)
Male	261	32,428 (42%)	1,106	75,648 (48%)	157	31,984 (47%)
Age group (years)						
0-4	85	8,001 (10%)	282	20,632 (13%)	131	32,406 (47%)
5-9	43	2,506 (3%)	408	24,738 (16%)	18	5,463 (8%)
10-19	77	5,495 (7%)	468	26,421 (17%)	27	3,988 (6%)
20-29	56	6,053 (8%)	218	10,743 (7%)	19	2,485 (4%)
30-39	73	8,834 (11%)	211	17,231 (11%)	16	3,466 (5%)
40-49	65	8,547 (11%)	199	17,901 (11%)	21	3,052 (4%)
50-59	56	7,289 (9%)	153	12,715 (8%)	28	3,706 (5%)
60-69	47	7,513 (10%)	139	10,816 (7%)	34	4,323 (6%)
70-79	53	9,110 (12%)	131	9,143 (6%)	47	4,446 (7%)
80-89	58	8,865 (12%)	49	5,887 (4%)	34	3,623 (5%)
90+	23	4,586 (6%)	15	1,771 (1%)	13	1,417 (2%)
Local Health District of residence						
Central Coast	26	2,601 (3%)	57	4,099 (3%)	13	2,331 (3%)
Far West	< 5	147 (0%)	< 5	177 (0%)	< 5	148 (0%)
Hunter New England	55	5,859 (8%)	109	11,716 (7%)	34	6,987 (10%)
Illawarra Shoalhaven	45	3,366 (4%)	72	7,660 (5%)	34	3,690 (5%)
Mid North Coast	10	1,116 (1%)	10	2,434 (2%)	< 5	1,163 (2%)
Murrumbidgee	13	2,168 (3%)	41	5,265 (3%)	15	2,283 (3%)
Nepean Blue Mountains	48	4,659 (6%)	146	10,269 (6%)	19	4,957 (7%)
Northern NSW	8	2,082 (3%)	58	4,734 (3%)	9	1,831 (3%)
Northern Sydney	84	10,001 (13%)	357	20,888 (13%)	44	8,832 (13%)
South Eastern Sydney	55	7,485 (10%)	229	14,401 (9%)	61	6,373 (9%)
South Western Sydney	93	11,690 (15%)	454	24,053 (15%)	42	9,168 (13%)
Southern NSW	7	1,267 (2%)	25	3,334 (2%)	10	1,559 (2%)
Sydney	38	5,984 (8%)	195	10,034 (6%)	26	4,225 (6%)
Western NSW	14	1,753 (2%)	26	4,843 (3%)	5	2,408 (4%)
Western Sydney	138	16,248 (21%)	490	33,727 (21%)	73	12,310 (18%)
Aboriginal status						
Aboriginal and/or Torres Strait Islander	15	1,636 (2%)	42	4,359 (3%)	8	2,173 (3%)
Not Aboriginal or Torres Strait Islander	319	40,558 (53%)	1,125	83,754 (53%)	196	31,985 (47%)
Not Stated / Unknown	294	34,636 (45%)	1,106	69,930 (44%)	184	34,227 (50%)
Total	628	76,830 (100%)	2,273	158,043 (100%)	388	68,385 (100%)

Note: Total includes all cases including those with missing gender, age, LHD; or who are interstate or overseas residents.

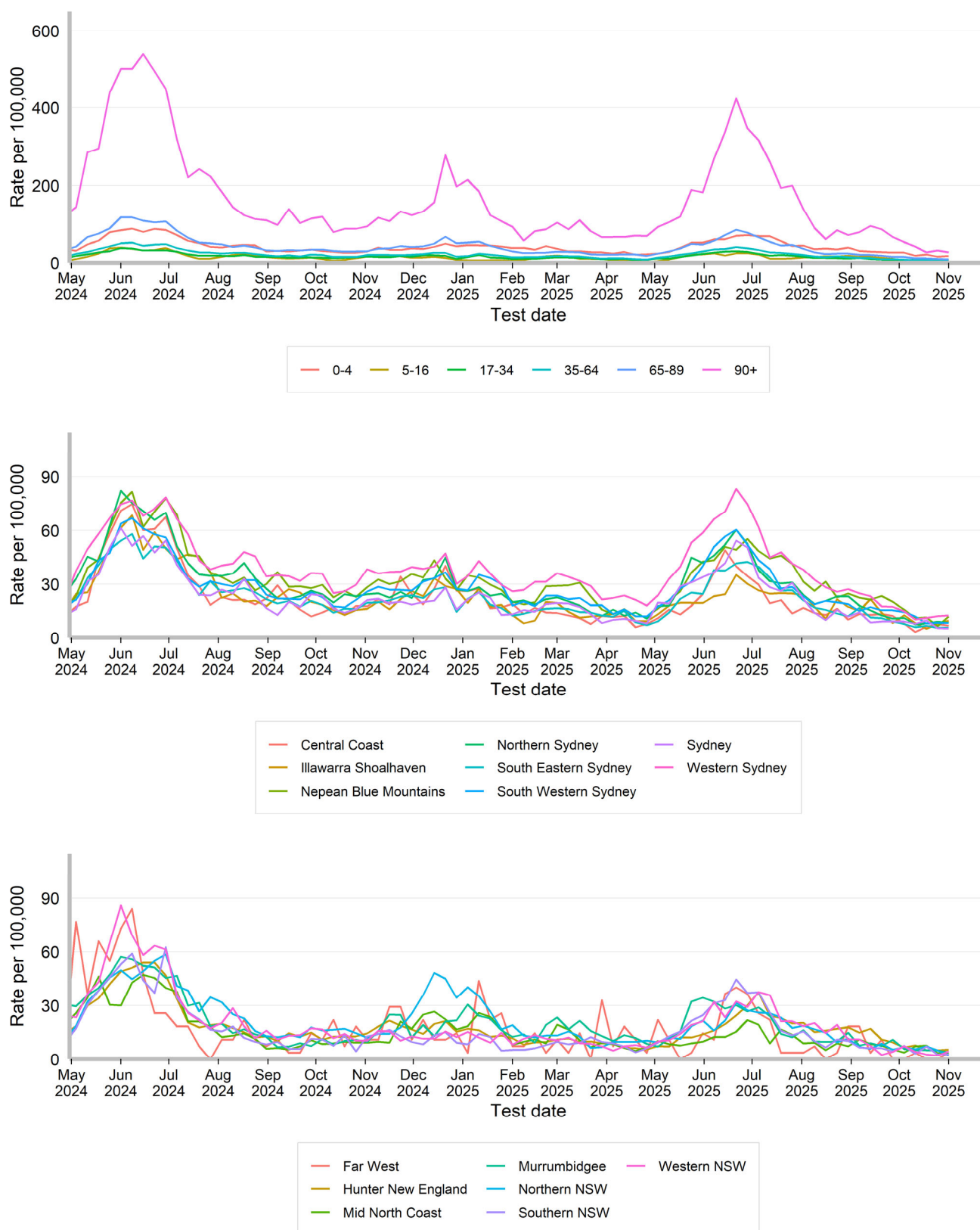
Figure 5. Weekly notifications of COVID-19*, Influenza and RSV, by date of test and type of test performed, NSW, 1 May 2024 to 1 November 2025



Rates of COVID-19 notifications per 100,000 population

Interpretation: Rates of COVID-19 notifications have been stable across most age groups and regions.

Figure 6. Weekly rate of COVID-19* notifications per 100,000 population, by age group, Local Health District and test date, NSW, 1 May 2024 to 1 November 2025



Rates of influenza notifications per 100,000 population

Interpretation: Rates of influenza notifications have been stable across most age groups and regions.

Figure 7. Weekly rate of influenza notifications per 100,000 population, by age group, Local Health District and test date, NSW, 1 May 2024 to 1 November 2025



Rates of RSV notifications per 100,000 population

Interpretation: Rates of RSV notifications have been stable across most age groups and regions.

Figure 8. Weekly rate of respiratory syncytial virus notifications per 100,000 population, by age group and test date, NSW, 1 May 2024 to 1 November 2025

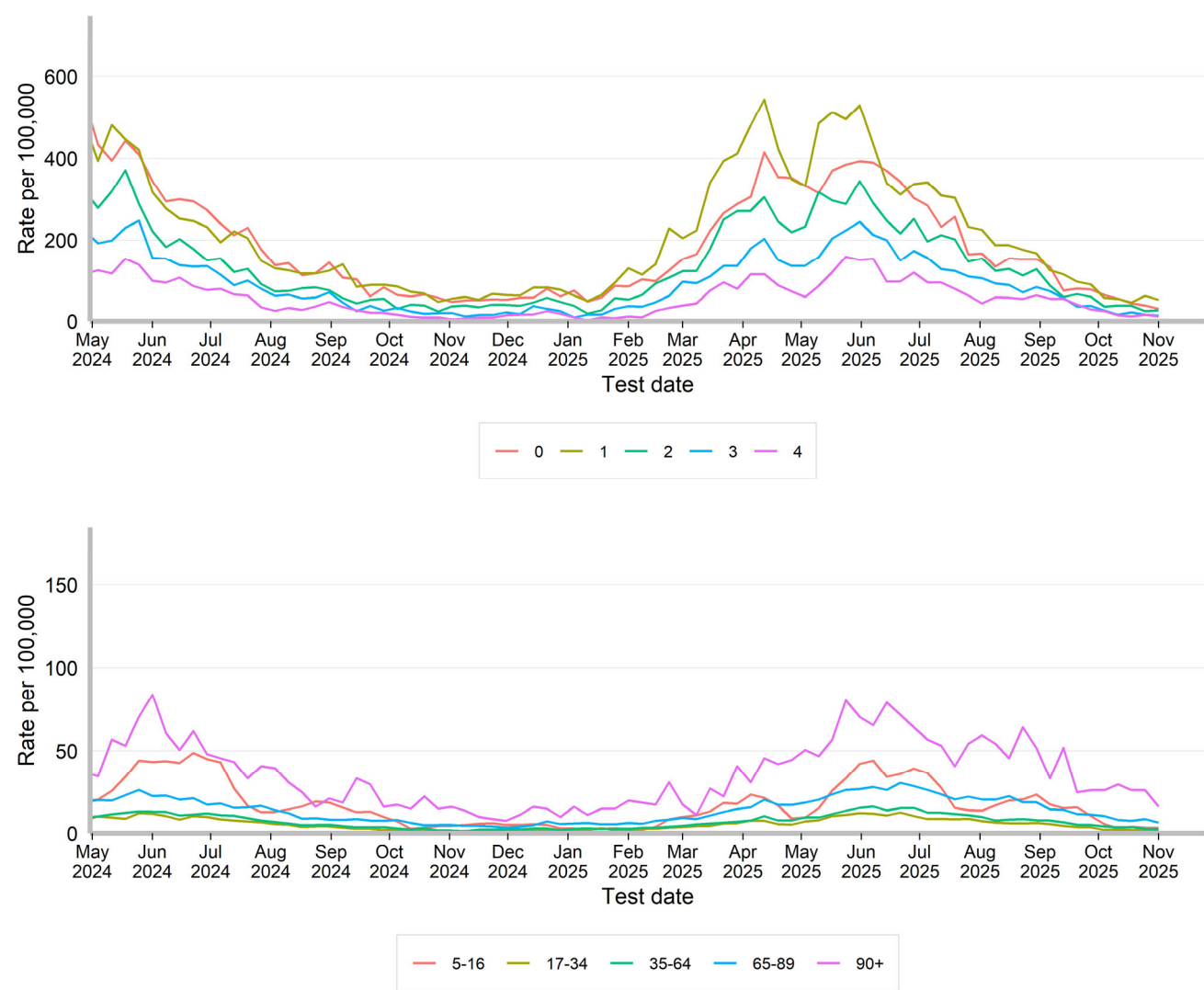
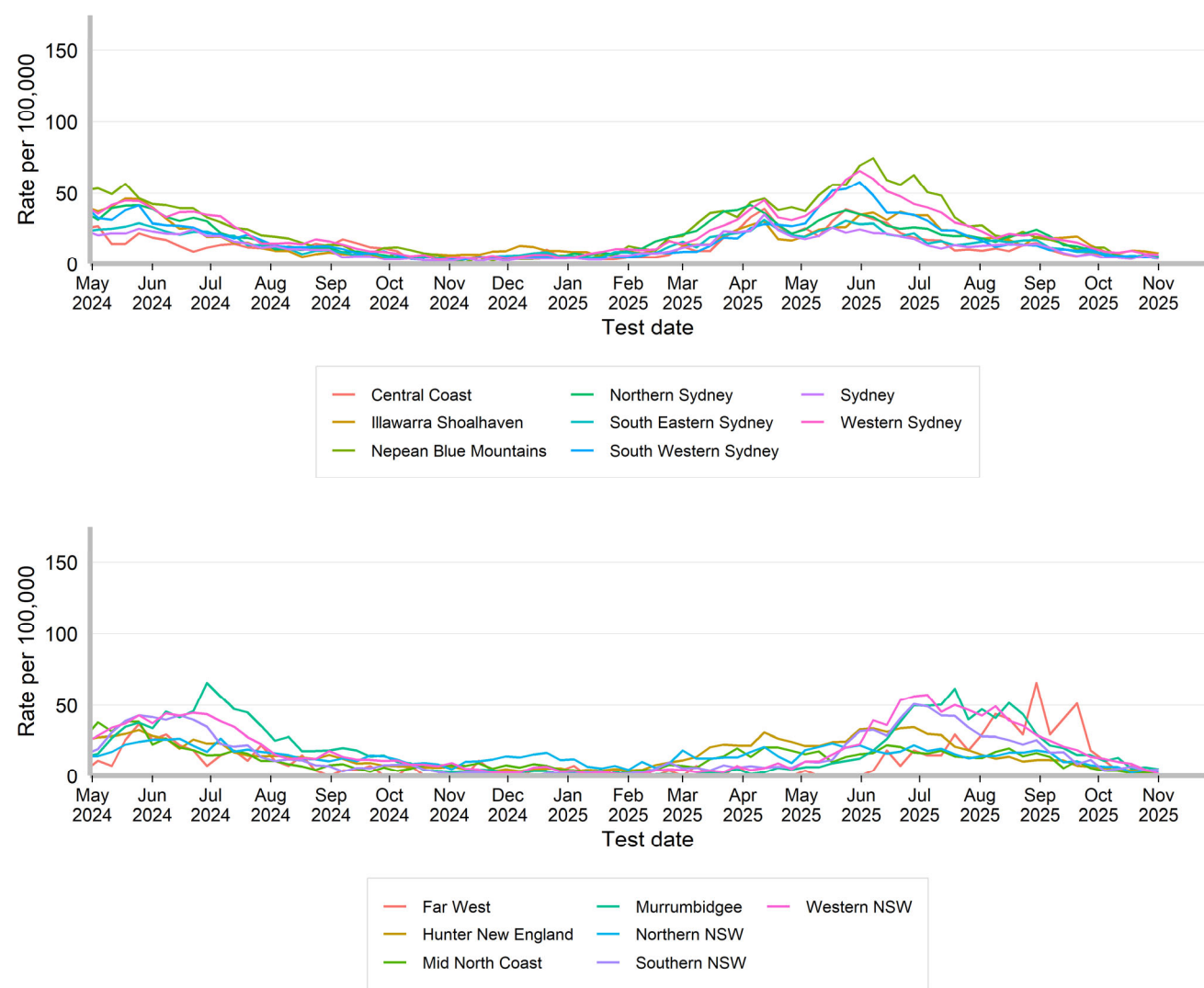


Figure 9. Weekly rate of respiratory syncytial virus notifications per 100,000 population, by Local Health District and test date, NSW, 1 May 2024 to 1 November 2025



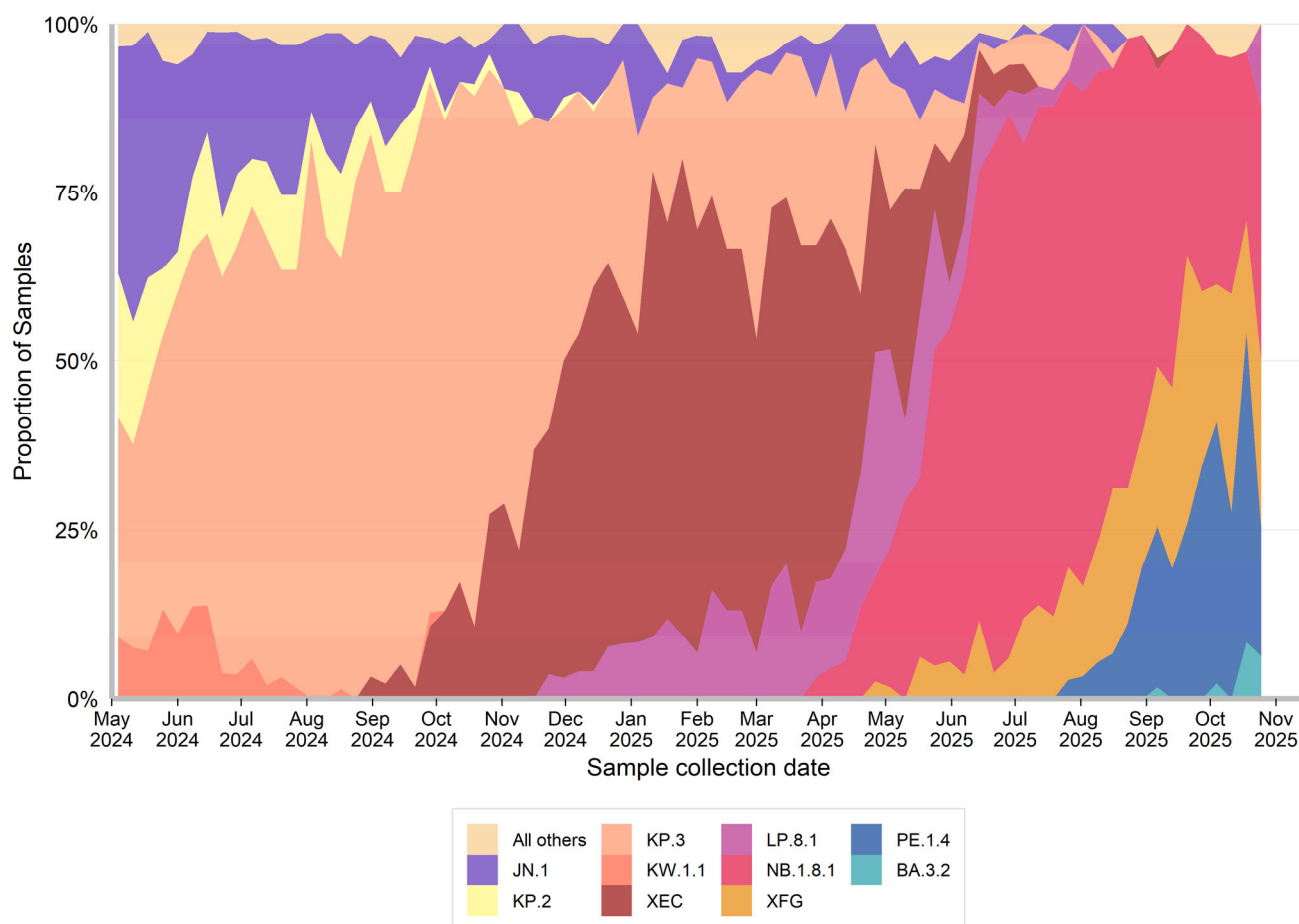
Other surveillance indicators

COVID-19 Whole Genome Sequencing

A subset of specimens from people who test positive with COVID-19 via PCR at NSW Health Pathology services undergo whole genome sequencing each week to identify and understand the behaviour of circulating variants. This sample may not necessarily reflect the distribution of all cases across NSW. NSW continues to monitor the sub-lineages in samples from ICU to monitor for increased disease severity.

Interpretation: NSW continues to monitor sub-lineages emerging globally and locally and consider their impact in the context of the local immunity profile. We now report sub-lineage BA.3.2 which is being monitored globally.

Figure 10. Estimated weekly distribution of COVID-19 sub-lineages in the community, 1 May 2024 to 25 October 2025

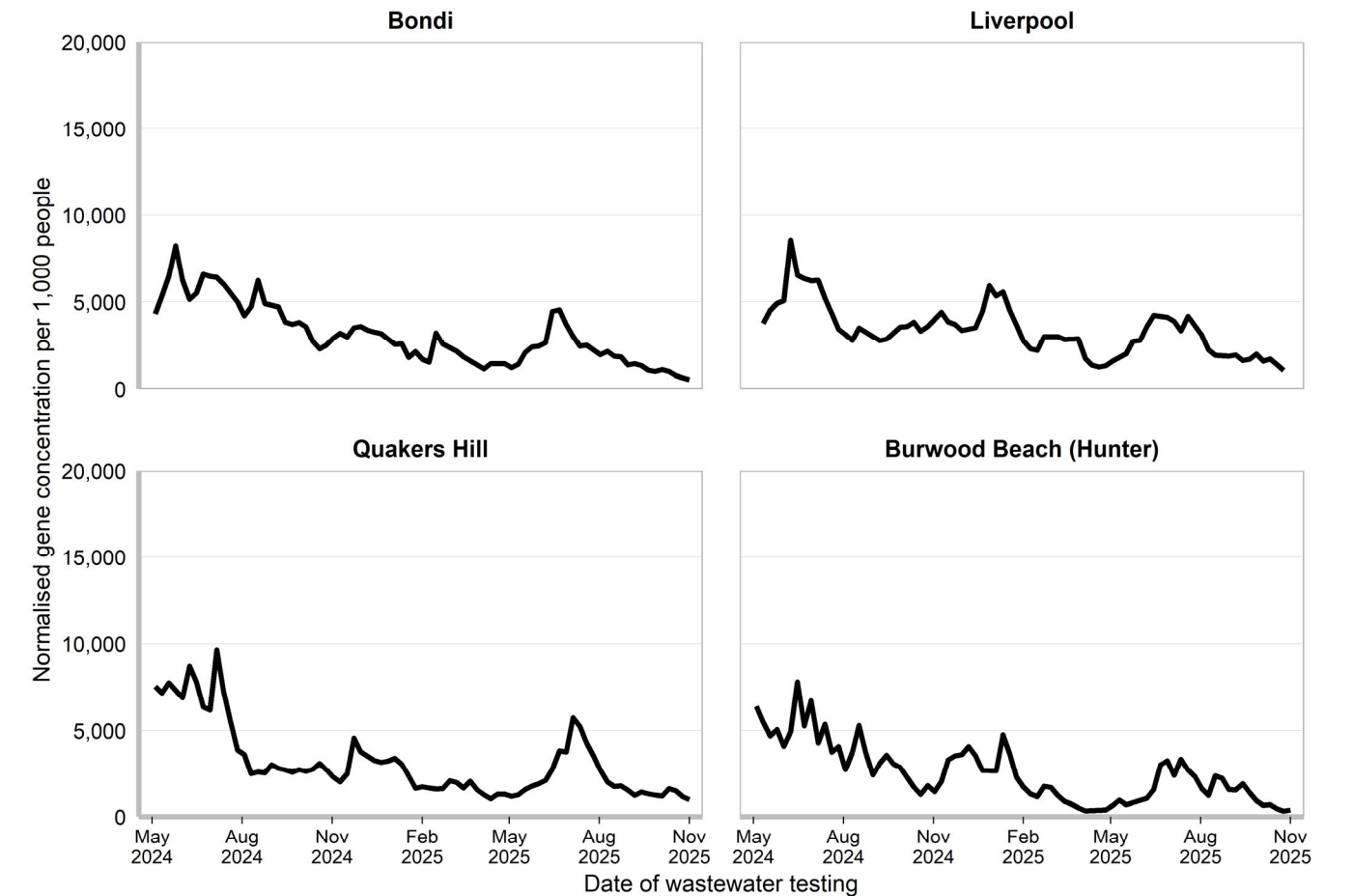


COVID-19 Wastewater Surveillance Program

Trends are presented for Bondi, Liverpool, Quakers Hill, and Burwood Beach (Hunter) wastewater catchments from 01 May 2024 to the week ending 1 November 2025. For more information, please see the COVID-19 Wastewater Surveillance Program website: <https://www.health.nsw.gov.au/Infectious/covid-19/Pages/sewage-surveillance.aspx>.

Interpretation: Gene concentrations per 1,000 people are low in all catchments.

Figure 11. Gene concentration, per 1,000 people in each wastewater catchment, 1 May 2024 to 1 November 2025



NSW Sentinel Laboratory Network

The NSW Sentinel Laboratory Network comprises of 12 public and private laboratories throughout NSW who provide additional data on positive and negative test results. This data helps us understand which respiratory viruses are circulating and their level of activity. Note that the number of laboratories providing data differs between viruses and changes between weeks (Tables 2 and 3).

Interpretation: In the last week COVID-19 test positivity decreased to 2.4%. Influenza test positivity decreased to 8.5%. RSV test positivity decreased to 1.2%.

Figure 12. Number and proportion of tests positive for COVID-19 at NSW sentinel laboratories by week, 1 May 2024 to 2 November 2025

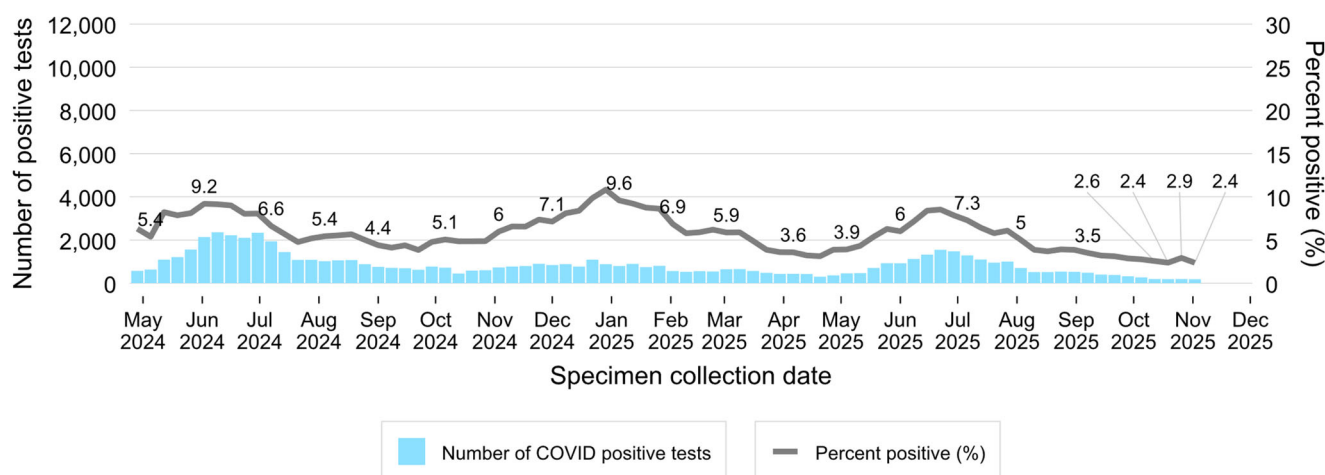


Figure 13. Number and proportion of tests positive for influenza at NSW sentinel laboratories by week, 1 May 2024 to 2 November 2025

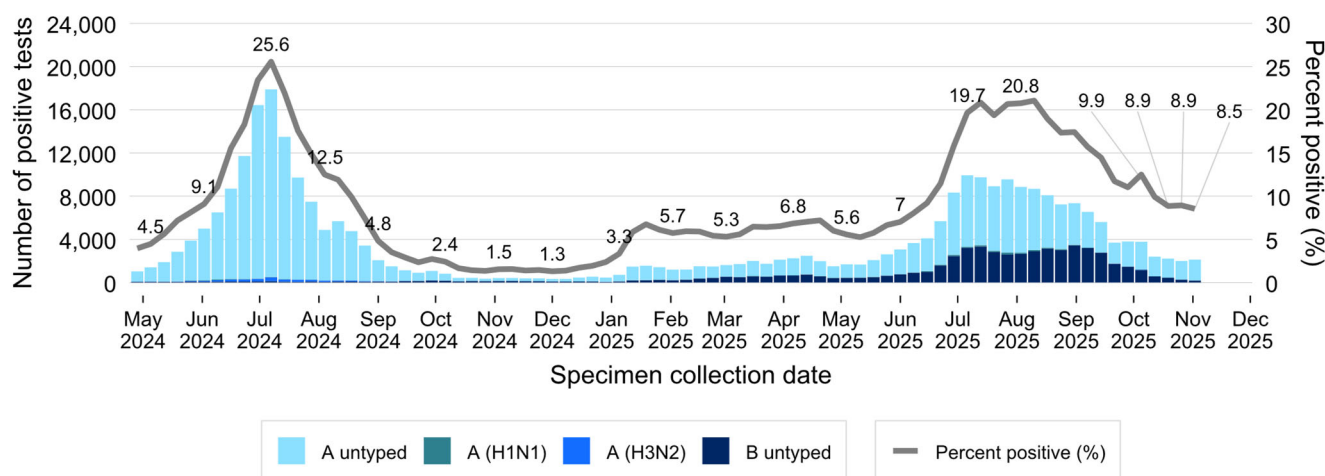


Figure 14. Number and proportion of tests positive for RSV at NSW sentinel laboratories by week, 1 May 2024 to November 2025

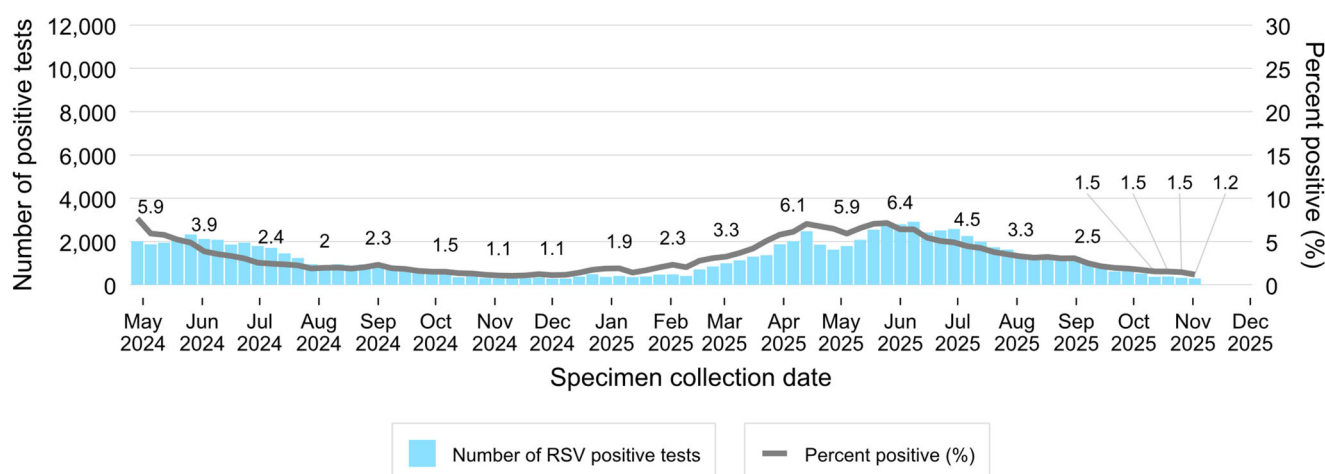


Figure 15. Number of positive PCR test results and proportion of tests positive for other respiratory viruses at NSW sentinel laboratories by week, 1 May 2024 to 2 November 2025

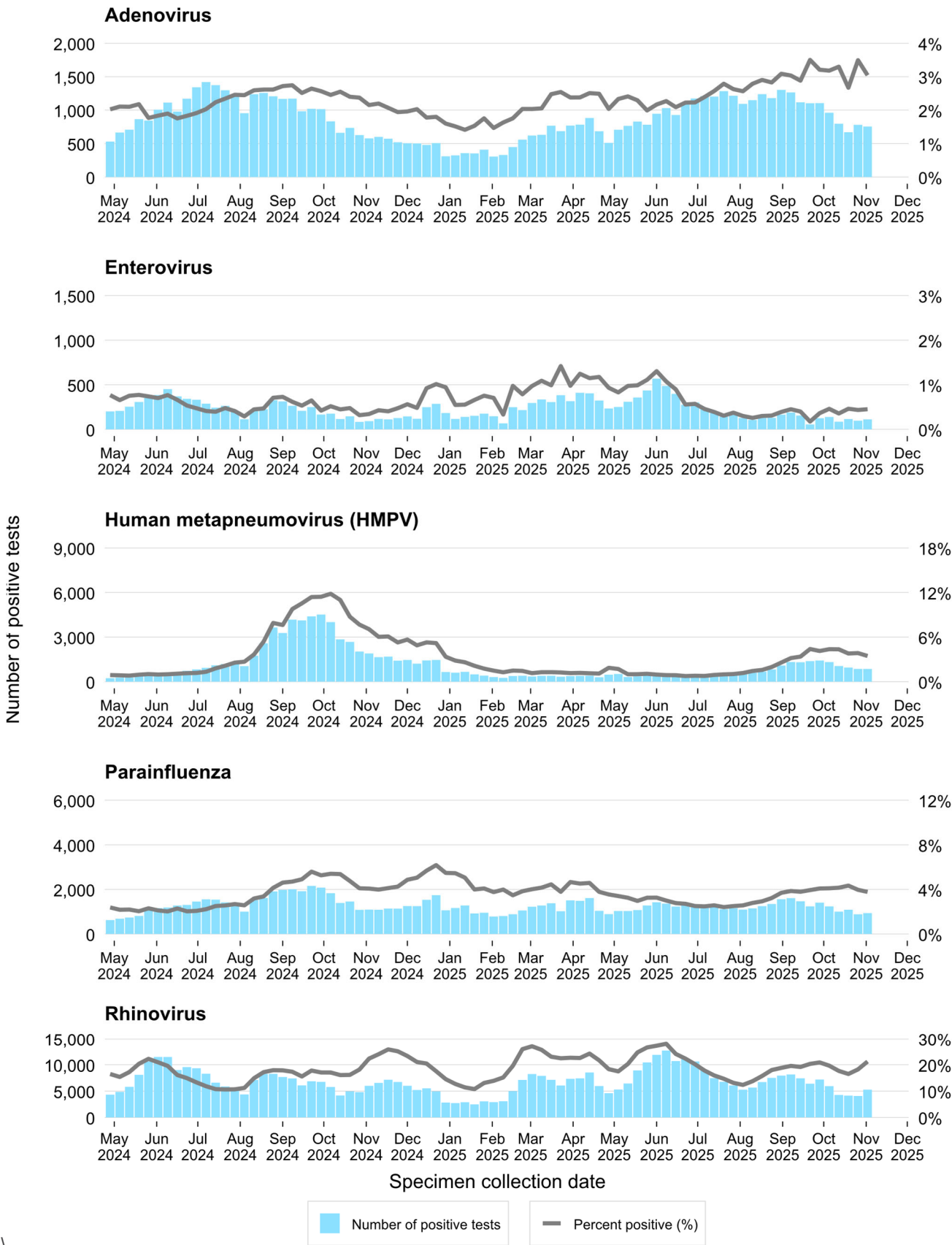


Table 2. Total number of COVID-19 notifications from NSW sentinel laboratories, in the four weeks to 2 November 2025

	Week ending							
	12 October		19 October		26 October		02 November	
	n	% pos	n	% pos	n	% pos	n	% pos
SARS-CoV-2	195	2.6%	192	2.4%	194	2.9%	185	2.4%
Number of COVID PCR tests conducted	7,577		8,073		6,617		7,805	
Number of laboratories reporting COVID	3		3		2		3	

Recent data is subject to change.

Table 3. Total number of other respiratory disease notifications from NSW sentinel laboratories, in the four weeks to 2 November 2025

	Week ending							
	12 October		19 October		26 October		02 November	
	n	% pos	n	% pos	n	% pos	n	% pos
Influenza	2,394	9.9%	2,223	8.9%	1,995	8.9%	2,120	8.5%
Respiratory syncytial virus (RSV)	373	1.5%	385	1.5%	326	1.5%	294	1.2%
Adenovirus	797	3.3%	670	2.7%	780	3.5%	755	3.0%
Human metapneumovirus (HMPV)	1,052	4.4%	951	3.8%	859	3.8%	858	3.5%
Rhinovirus	4,262	17.6%	4,137	16.5%	4,067	18.2%	5,265	21.2%
Enterovirus	86	0.4%	116	0.5%	97	0.4%	112	0.5%
Parainfluenza	1,003	4.2%	1,089	4.3%	885	4.0%	937	3.8%
Number of PCR tests conducted	24,161		25,097		22,325		24,814	
Number of laboratories reporting	11		11		10		11	

Recent data is subject to change.

FluTracking

FluTracking is an online health surveillance system used to detect epidemics of influenza across Australia and New Zealand. Participants complete an online survey each week to provide community level influenza-like illness surveillance, consistent surveillance of influenza activity across all jurisdictions over time, and year to year comparisons of the timing, attack rates and seriousness of influenza in the community. More information about FluTracking and ways to be involved are available here: <https://info.flutracking.net/about/>

Interpretation: The proportion of people reporting fever and cough is below 1%.

Figure 16. Proportion of FluTracking participants reporting influenza-like illness, NSW, 1 January to 2 November 2025

