

Backpacker alert

Measles



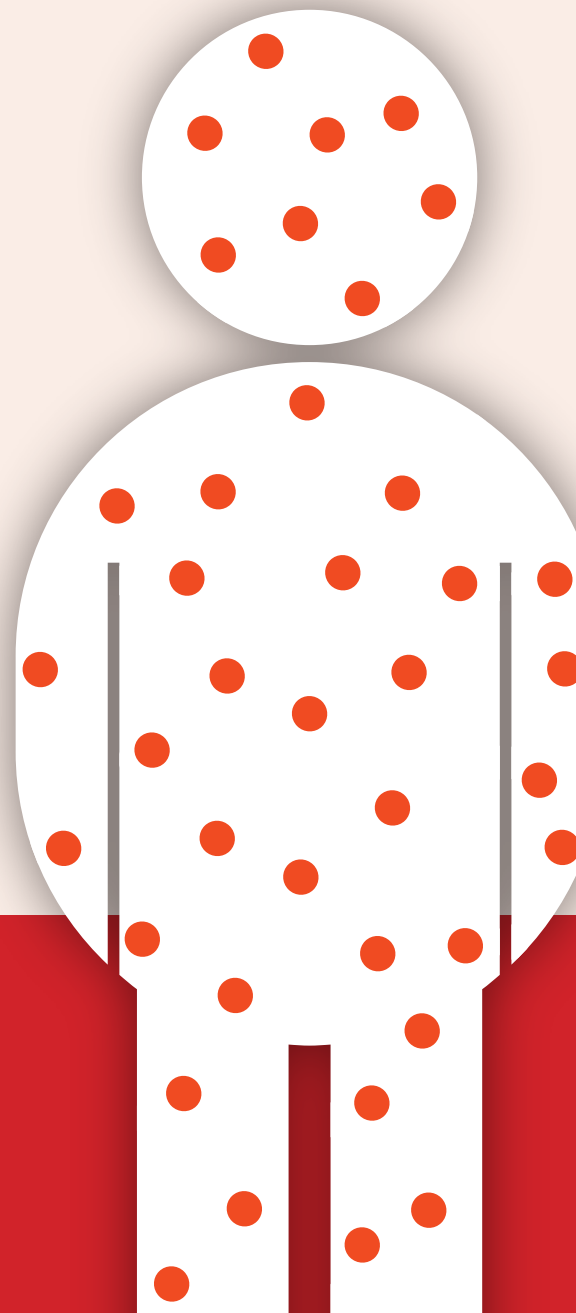
- Cases of measles have been diagnosed in backpackers in NSW, Queensland, and Victoria.
- Measles is highly infectious.
- Other backpackers are at risk of developing measles.

Look out for these symptoms:

- **Fever**
- **Cough**
- **Runny nose**
- **Sore red eyes**
- **Followed 3 – 4 days later by a blotchy red rash that starts on your face**

If you have any of these symptoms:

1. try to keep away from others;
2. see a doctor, but call ahead and mention measles.



FREE PUBLIC HEALTH ADVICE
1300 066 055

www.health.nsw.gov.au/measles