

Rigorous Program Management

Introduction

Michael Currie
Program Management Office



What is Rigorous Program Management?

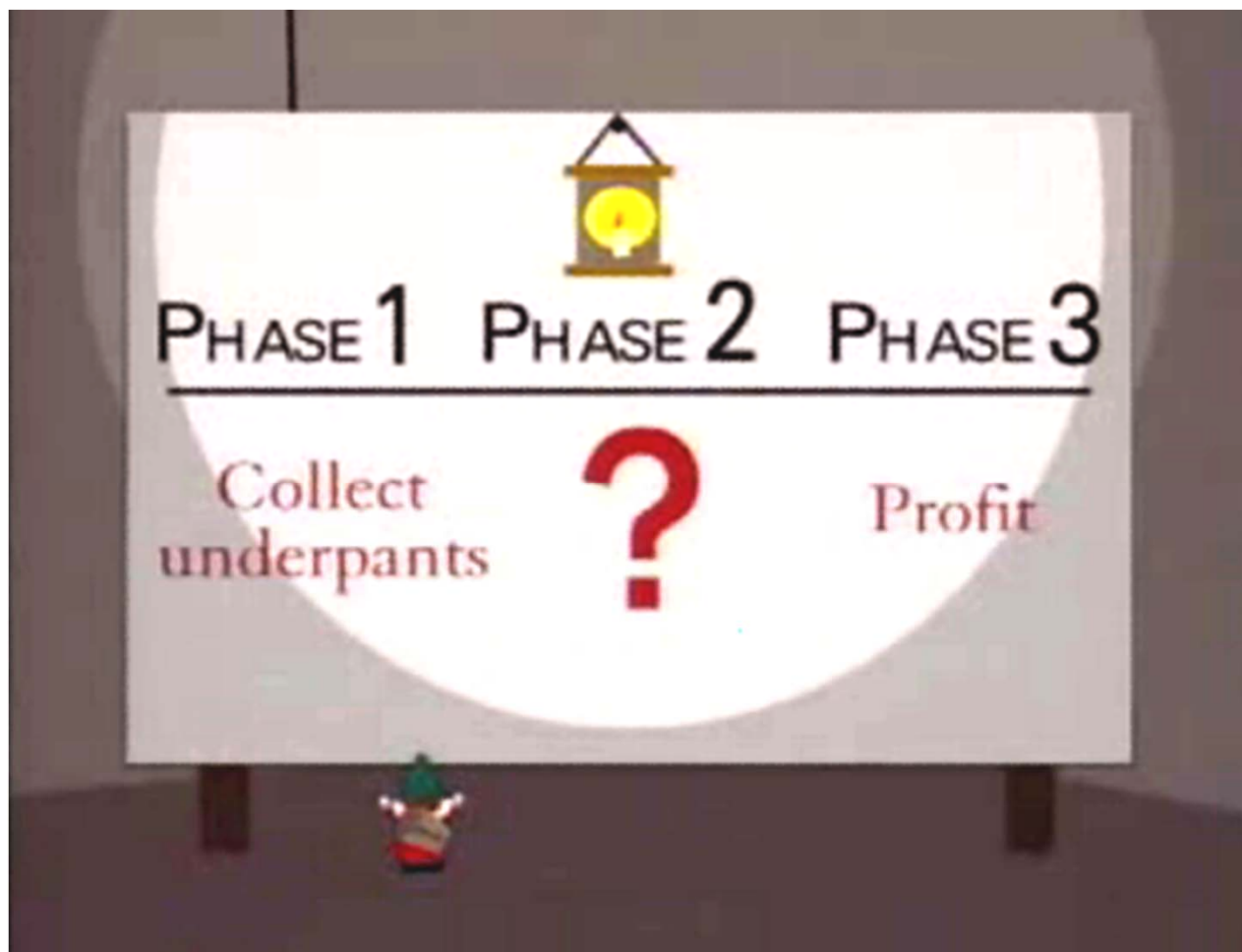
A tool, which is...

- ✓ a single point of entry for strategy management
- ✓ a way for executives to see all important strategies within organisation
- ✓ a means of identifying risks even at a low level
- ✓ online tracking software:
 - tracked and updated by owners
 - quick to update

How does RPM work?

- RPM utilises **roadmaps** as strategy-specific plans
 - ✓ These are **strategies** with **deliverables**
- What does a roadmap consist of?
 - ✓ Executive **summary**
 - ✓ Detailed **milestones** highlighting key actions
→ strategy's aims
- What do these roadmaps look like?
 - ✓ Initially entered into **Excel** and then uploaded into **online system**
 - ✓ Updates happen online

Why do we need detailed roadmaps?





Phase One: Identifying strategies and measuring success

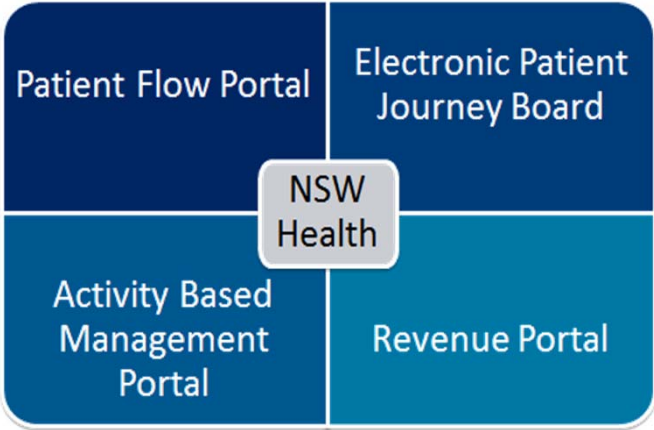
Places to Go

Internal

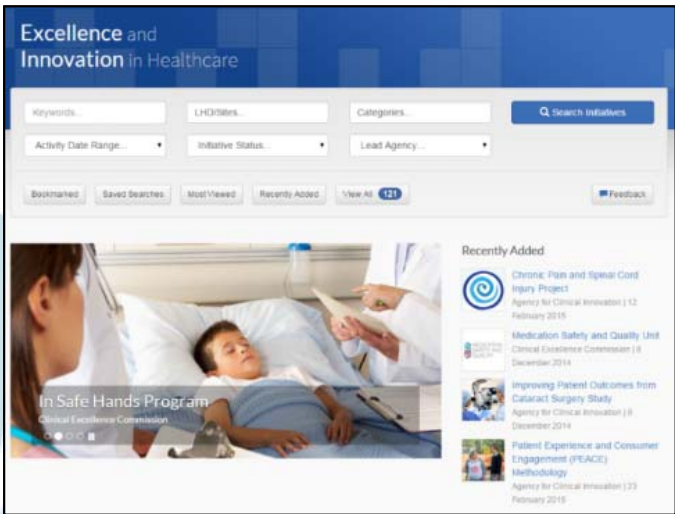
Priority Initiatives		Traffic Light Status (2014-15)			2014-15 FYM			2015-16 FYM		
Initiative	Owner	On Track	At Risk	Off Track	Planned	Actual	Planned	Actual	Planned	
1. Patient Flow Portal	Public Health	Green	Red	Yellow	100	100	100	100	100	
2. Electronic Patient Journey Board	Public Health	Green	Red	Yellow	100	100	100	100	100	
3. Activity Based Management Portal	Public Health	Green	Red	Yellow	100	100	100	100	100	
4. Revenue Portal	Public Health	Green	Red	Yellow	100	100	100	100	100	

WHOLE OF HEALTH PROGRAM

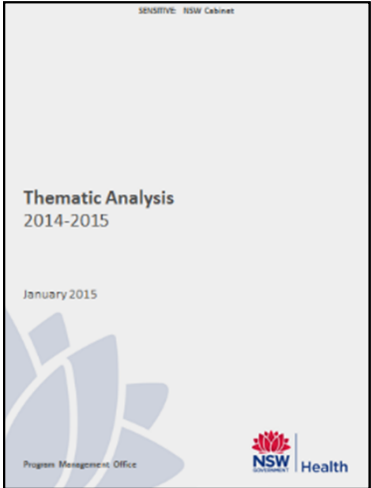
NSW Ministry of Health



Pillars



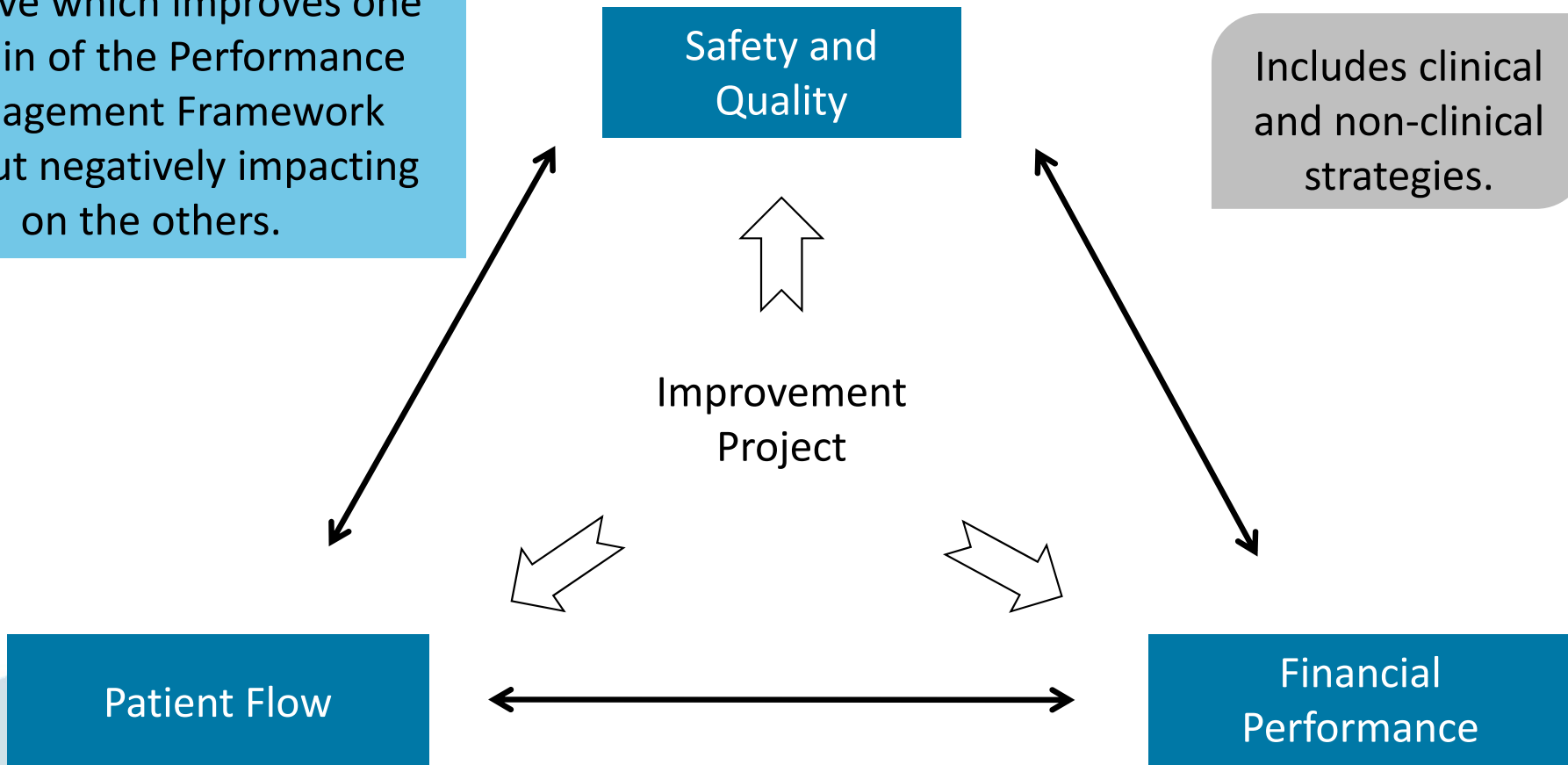
PMO Resources



While a Project may focus on one domain, it will have flow on effects to the other domains

An Improvement Project is any initiative which improves one domain of the Performance Management Framework without negatively impacting on the others.

Includes clinical and non-clinical strategies.





Phase 2: Constructing a Roadmap

A "Roadmap" is a tool designed to provide high-level insights, in a timely fashion

Single point of accountability

- One person **owns** a Roadmap and is responsible/accountable for its implementation

Appropriate level of detail for executive review

- Roadmap's Milestones reflect **major steps**—typically aggregations of many smaller activities
- Employ a level of detail and plain language that executives who are unfamiliar with initiatives can understand and engage with

Capture key risks and interdependencies

- Roadmaps contain Milestones for tasks that mitigate **critical risks**
- Milestones reflect **critical interdependencies** with other groups or external parties

Forward-looking

- The Roadmap provides an **early-warning system** to enable course corrections
- Risks to achieving Impacts should typically become visible in time to course-correct

Regular Milestones

- Milestones **occur regularly**, typically monthly or every two months to prevent projects from going off-track or being invisible to senior leaders

Capture key indicators and financial impacts

- Key operating indicators/metrics are used effectively to measure success and risk
- Financial Impacts (benefits and costs) must sum to overall targets for the initiative
- **Financial Impacts typically associated with 20–40% of Milestones**
- Timing of financial benefits reflect actual economic benefit, and captured in Milestone dates

The Roadmap is captured in an Excel template with three components

Component

Description

Summary

- Qualitative information and a project overview
- Roadmap owner and sponsor
- Scope, benefits, and implementation team
- Key issues, risks and critical interdependencies

DICE

- Helps predict success and identify risks based on human factors such as commitment, team integrity, duration, and effort
 - Asks five questions about the plan
 - Informs design of roadmap to mitigate risks

Milestones and Impacts

- Milestones to deliver the project (including dates and Impacts)
 - **Milestones** are major deliverables, outcomes, or activities to be completed by a defined date
 - **Impacts** are attached to milestones (known as "Impact-bearing Milestones") and are measurable results, including leading and lagging indicators



Phase 3: Monitoring and Reporting

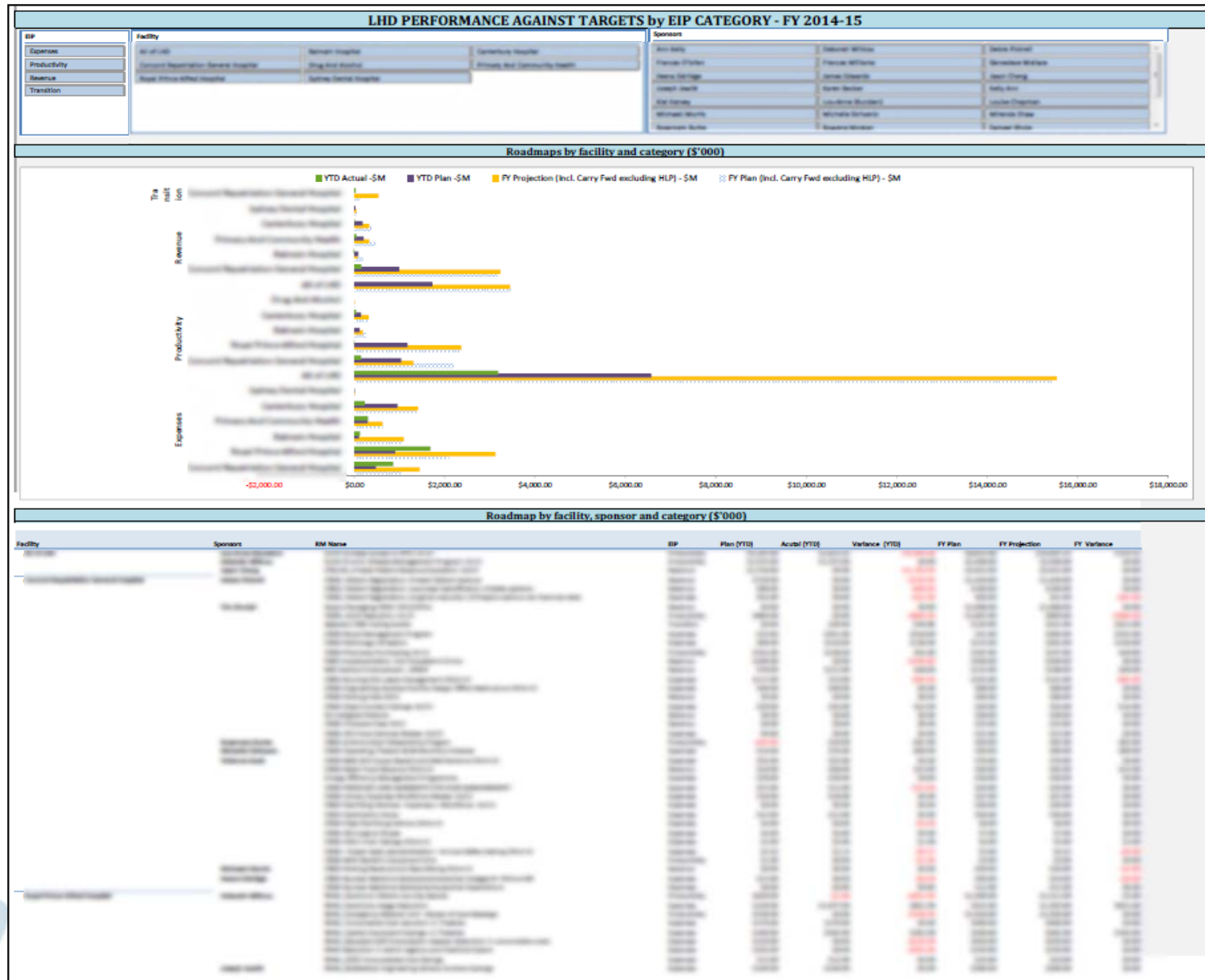
Current RPM Reports

Report	Description	Intended Audience
Milestones Due Report	This report is run on a monthly basis to identify roadmap milestones that are overdue and required to be updated with the current position	Superusers for information and distribution to users
RPM Executive Report	Its primary purpose is to inform the LHD and the Executive Leadership at LHD/SHN and Supporting Entities of their overall position and the performance of individual roadmaps	LHD / SHN / Supporting Entities Board, Executives and Superusers
Dashboard	Similar to RPM Exec report with ability to get further insight at facility level, roadmap level or even sponsor level	Superusers to do analysis on current position and potential distribution to interested parties

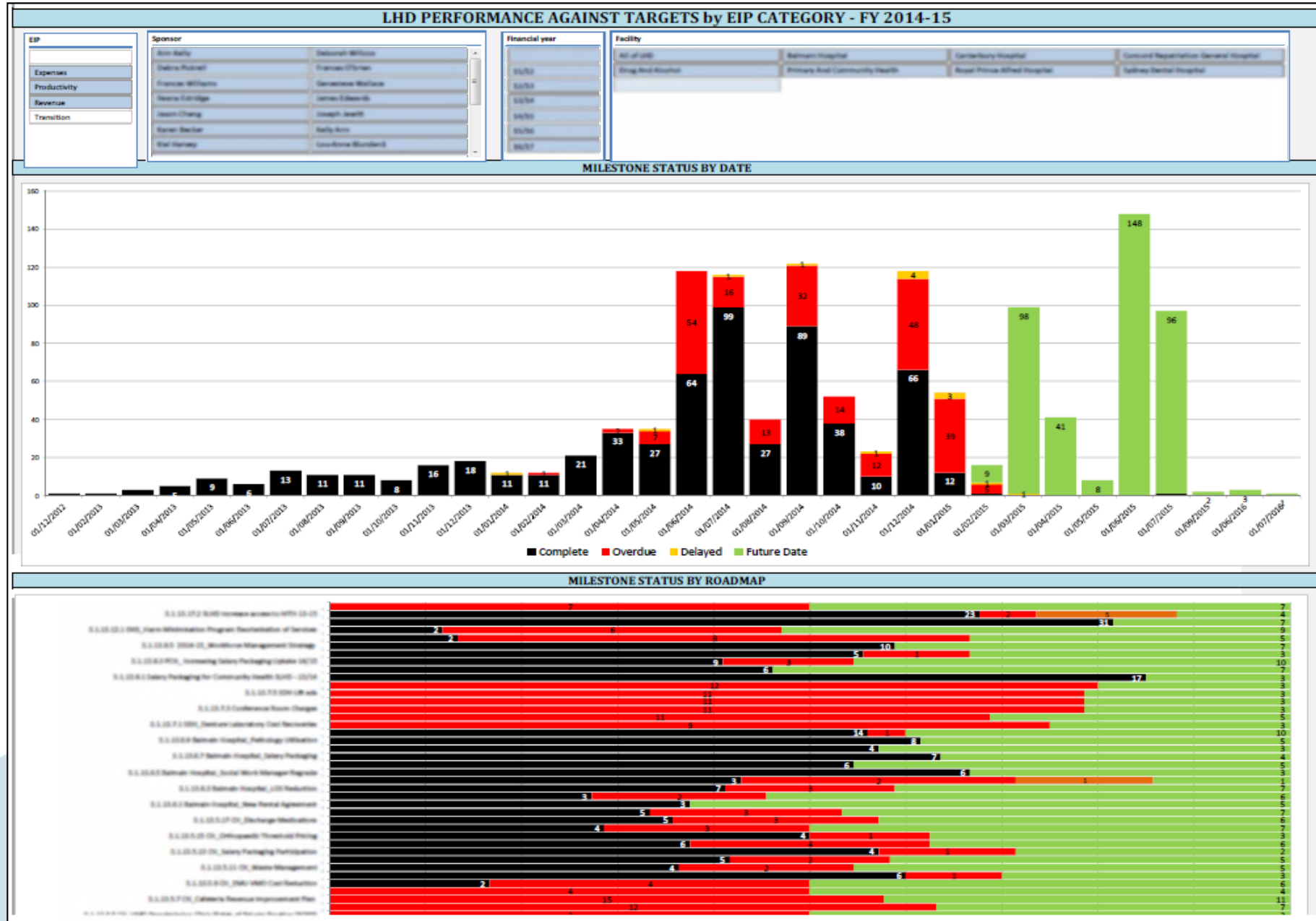
Individual Strategy Page

ABCD LHD							
Antimicrobial Stewardship Implementation Phase 2							
Aim/Objectives:							
Strategic aim will be achieved by working on national targets for drug usage. Guidance MS is an electronic decision support and approval program. The program assists senior medical staff with selection of appropriate antimicrobials as well provides the infectious disease team with transparency of such prescriptions. The introduction of Guidance MS into ABCD has greatly assisted with meeting National Accreditation standards (1.24). The key objectives of this system are to enhance appropriate prescribing and as a result, reduce unnecessary antimicrobial use which should lead to a reduction in antimicrobial resistance. This has been demonstrated by other ABCD LHDs.							
Project Leads							
Executive Sponsor				Project Leader			
Minerva McGonagall				Hermione Granger			
RPM Traffic Lights							
Milestones			Financial Impacts			DICE Risk Score	
Variance Analysis:							
Month:	Month (January)				Year to Date Position (January)		
	Plan	Actual	Variance		Plan	Actual	Variance
	100	-	(100)		100	-	(100)
January Milestones							
1	2	3	4	5	6	7	8
Milestone		Planned Date	Completion date	Status	Planned Value		
Intern Training Sessions to be provided		31/01/2015	31/01/2015		-		
Produce antibiogram for LHD		01/01/2015	01/01/2015		-		
Monthly Financial savings		31/01/2015	31/01/2015		100.00		
February Milestones							
Milestone		Planned Date	Completion date	Status	Planned Value		
Complete Guidance MS phase 1 Implementation		28/02/2014	28/02/2014		-		
Monthly Financial savings		28/02/2015			100.00		

Dashboard 2



Dashboard 4



Program Management Office

pmo@doh.health.nsw.gov.au

