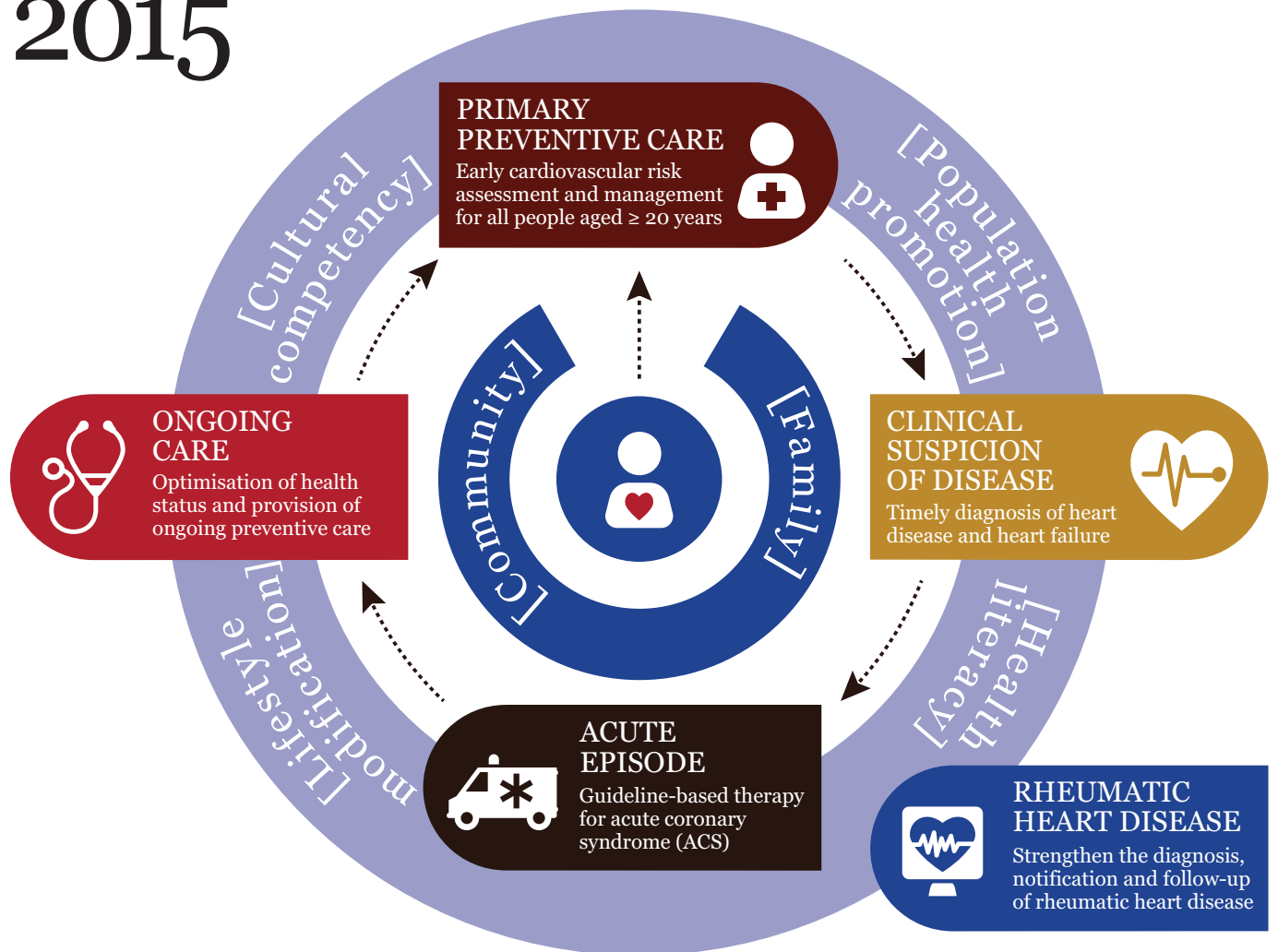


# NSW Health Activities

## 2015



### PRIMARY PREVENTIVE CARE

- Analyse Medicare data on health assessments and follow up items
- Optimise cardiovascular risk assessment and management, including through use of Medicare items
- Support Aboriginal Community Controlled Health Services in Clinical Quality Improvement activities
- Support smoking cessation initiatives including brief interventions and Quitline referrals

### CLINICAL SUSPICION OF DISEASE

- Analyse linked Medicare data to assess access to specialist services
- Support mobile echocardiography initiatives
- Review arrangements for specialist outreach services

### ACUTE EPISODE

- Analyse linked Medicare data to understand the journey of patients with acute coronary syndrome (ACS) through the health system
- Analyse data on access to cardiac procedures for ACS and review patient transfer pathways
- Develop an electronic chest pain pathway to allow local audit processes for ACS

### ONGOING CARE

- Analyse linked Medicare data to assess post-discharge care
- Improve multidisciplinary models of care, including through use of Medicare items
- Improve uptake of cardiac rehabilitation by Aboriginal people
- Ensure chronic disease programs for Aboriginal people align with current evidence

### RHEUMATIC HEART DISEASE

- Make acute rheumatic fever and rheumatic heart disease notifiable
- Establish a state-wide electronic register
- Establish sustainable models for long term patient follow up