

NSW Drug Package

NSW Budget 2016-17



Health

The NSW Government has increased funding to **\$75 million over four years** to tackle drug misuse in our communities. The NSW Government is investing **\$197 million in 2016-17** for drug and alcohol services.

The package of new investment focuses on supporting more young people, more people into treatment, and more families.

\$24 million
over four years

to help more young people



\$16 million
for youth detox and treatment services

To expand access to youth-specific services for more than 1000 young people so they get access to a range of treatment options.



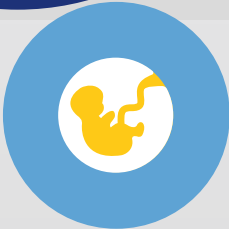
\$8 million
for Early Intervention Innovation Fund

The Innovation Fund will help build the evidence-base for early intervention models to support people at risk with a particular focus on young people using drugs.

NSW Drug Package

\$24.5 million
over four years

to help more families



\$15 million

to expand substance use in pregnancy services

To provide specialist medical and nursing services throughout pregnancy and post-delivery including ongoing support. This new investment will help an additional 1000 pregnant women over four years.



\$8 million

to increase residential rehabilitation for women and parents with dependant children

This new investment means an additional 1000 people over four years will get the help they need to get off drugs and be the best parents they can be.



\$1.5 million

to boost support for families and carers

Families will be supported with de-escalation strategies, information on understanding relapse and increased access to parenting programs.

23% of child reports referred by the Child Protection Helpline for further assessment listed carer drug and/or alcohol issues

Source: DHS Annual Report 2012

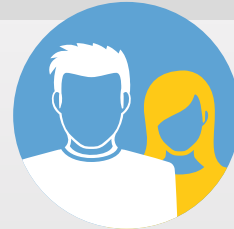
\$26.5 million
over four years

to help more people into treatment



\$12 million
for community treatment and aftercare

To expand NGO-LHD partnerships to develop new models of care and increase community-based treatment services and aftercare across NSW.



\$14.5 million
to help people with severe substance dependence

To help people with severe substance dependence and highly complex needs access the type of assertive community based support currently provided under the Involuntary Drug and Alcohol Treatment (IDAT) Program.



Increase access to **MERIT**

MERIT is an existing pre plea program for adult defendants who experience substance use issues.

Up to **1/3**
of people presenting to NSW hospitals have a drug and alcohol problem in need of intervention

Source: Evaluation of NSW Health Drug and Alcohol Consultation Liaison Services, November 2014", CHERE, University of Technology, Sydney and NDARC, University of NSW

NSW Drug Package

The NSW Drug Package demonstrates that NGOs are front and centre of the Government's response to drug and alcohol misuse. ”

Pru Goward MP
Assistant Minister for Health

**GETTING
HELP**

Alcohol Drug Information Service NSW (ADIS)

is available 24 hours a day, 7 days a week for support, information, counselling and referral to services in NSW.

Phone: 02 9361 8000 or 1800 131 350

Family Drug Support (FDS)

is available 24 hours a day, 7 days a week and provides telephone support to families in crisis due to drug and alcohol issues.

Phone: 1300 368 186 or visit www.fds.org.au

Your Room website

Offers information about a wide range of drugs, how they can affect people, side effects, withdrawal, and how to get help.

www.yourroom.com.au