

Briefing Session

Alcohol and other Drugs Hubs Grant Opportunity

Centre for Alcohol and Other Drugs
NSW Ministry of Health

27 July 2023 & 31 July 2023



Health

Acknowledgement of Country

The Ministry of Health office is on lands whose Traditional Owners are the Cammeraygal people.

NSW Health acknowledges the Traditional Custodians of country throughout NSW and their connections to land, sea and community.

We pay our respect to Aboriginal Elders past and present and celebrate the diversity of Aboriginal peoples and their ongoing cultures and connections to the lands and waters of NSW.

Welcome

Purpose

Introduce and brief NGO and Aboriginal community sector on two grant opportunities open to NGOs and ACCOs to deliver AOD Hubs

- ❖ 1A Enhancing Existing Partnership Hub Grants
- ❖ 1B Priority Population Hub Grants

Content

1. Background to grant opportunities
2. Grant summary
 - 1A Enhancing Existing Partnership Hub Grants
 - 1B Priority Population Hub Grants
3. Grants process
4. Q & A

About the session

Sessions

#1 3.30- 4.30pm , 27 July 2023

#2 2.30-3.30pm , 31 July 2023

Format

- One hour (40 minutes for presentation and 20 minutes for Q&A)
- Meet and connect via the Teams chat after the session
- Recorded for probity and reference – will be posted on NSW Health web page
- Guest audio muted
- Post questions in chat function - we will respond to as many as we can today
- All questions and responses will be documented and posted on NSW Health web page through Q&A updates

Acknowledgement

- Opportunity coupled with additional workload
- May create stress and anxiety for individuals and organisations
- Bound by legislative and policy frameworks that govern grants administration (see [Grants Administration Guide](#) as reference)

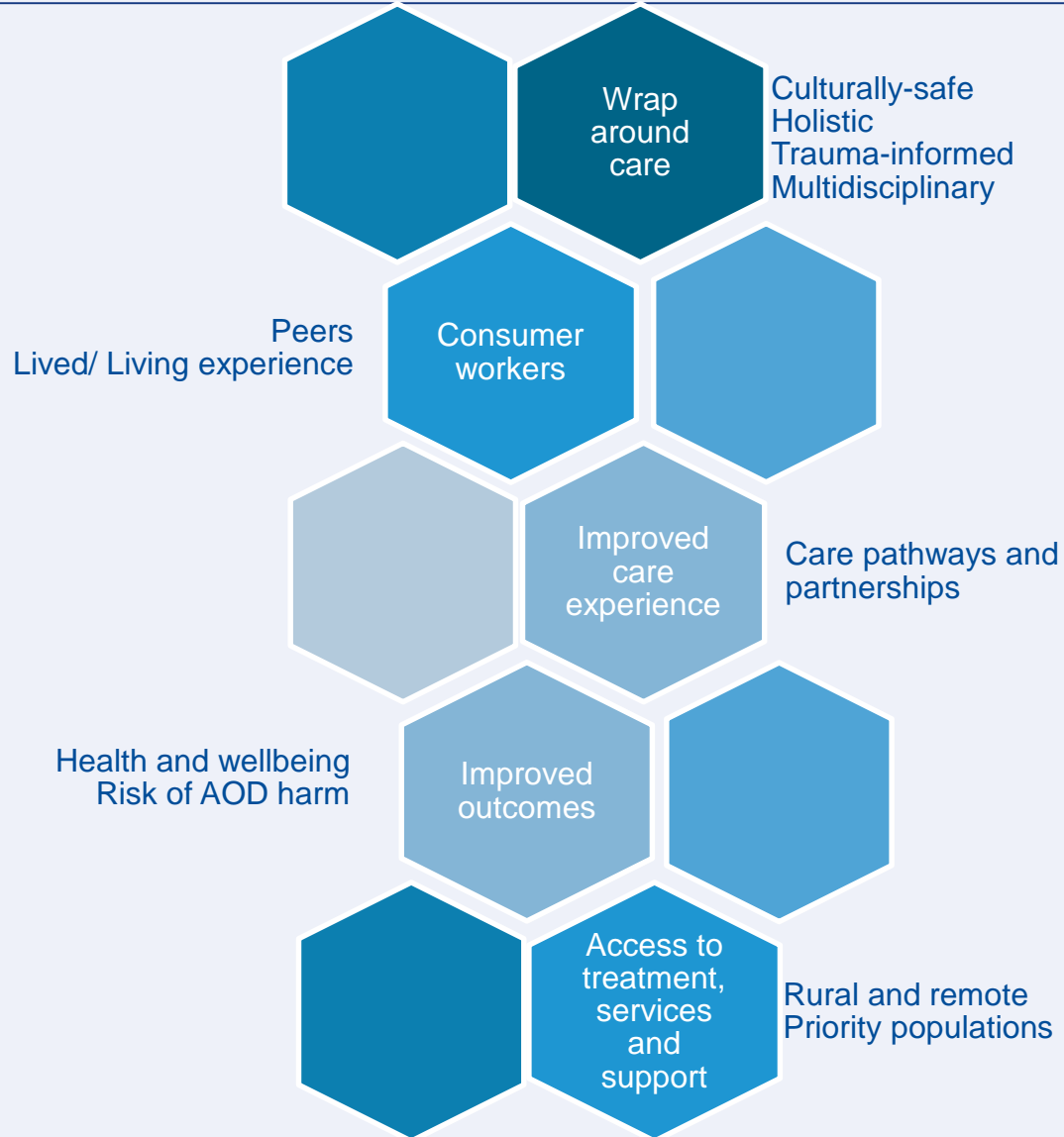
Background

- ❖ Gov't response to Ice Inquiry - \$500 million over four years
- ❖ \$358 million over four years for health programs
- ❖ Aims to reduce the harm from AOD use to improve outcomes for individuals, families, and communities.
 - ✓ Better access to services – including digital capability
 - ✓ Better integration
 - ✓ Improved system navigation
 - ✓ use of data and evidence
 - ✓ AOD workforce
 - ✓ Use of data and evidence

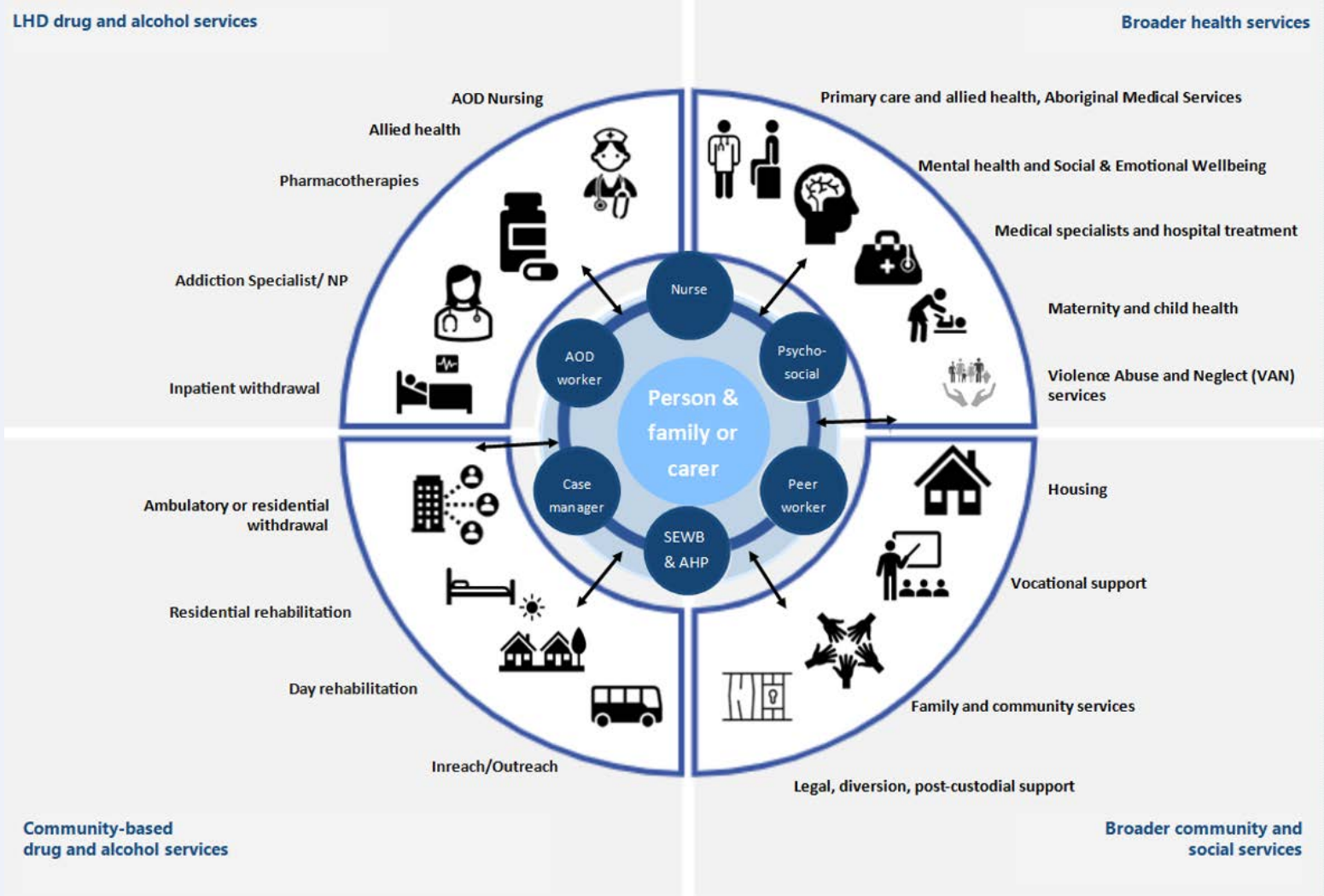
Key elements of the Hubs

- ❖ A multidisciplinary team providing specialist AOD treatment and support
- ❖ Care navigation
- ❖ Integrated and collaborative
- ❖ Holistic care
- ❖ Innovative service delivery
- ❖ Integrated working practices
- ❖ Peer worker or lived/ living experience input
- ❖ Culturally safe care
- ❖ Family, friends and carer support

The Hubs Objectives



The Hub model illustrated



Western medical model

The Hub model illustrated

Culturally adapted



Consumer adapted Hub illustration



The Hubs Procurement

ACCO- and/or NGO-led Hubs
Grants now open

Stream 1A – Enhance existing
partnerships

Stream 1B – New priority
population Hubs



LHD/SHN-led Hubs; PHNs
Grants open Spring/Summer

Stream 2A – New LHD/SHN-
led Hubs

Stream 2B – Collaborative
Commissioning with PHNs

What are the two streams?

1A Enhancing Existing Partnerships* Hubs Up to \$600,000 p.a	1B Priority Populations** Hubs Up to \$1,000,000 p.a each
For organisations with existing successful partnerships*	New partnerships* to establish priority population** AOD Hubs
NGO or ACCO-led	NGO or ACCO-led
Currently providing care to people experiencing AOD harm (though might not currently provide AOD services)	At least 1 partner with experience providing AOD care. At least 1 partner with experience working with priority group.
Funding to expand or enhance services, creating a Hub with AOD and broader health and social care	Funding to create a new Hub with AOD and broader health and social tailored to the priority population needs

*Partnerships

Partnerships are defined as 2 + orgs that work together

- ✓ towards a shared goal
- ✓ formal or informal



Characteristics may include:

- ✓ joint committee, working groups, boards,
- ✓ shared documents and processes to guide care delivery
- ✓ written agreements on consumer pathways
- ✓ joint meetings, and/or
- ✓ shared funding arrangements

**Priority populations

- ✓ People in regional and rural areas
- ✓ Aboriginal people
- ✓ People from culturally and linguistically diverse communities
- ✓ People from LGBTQI+ communities
- ✓ People experiencing homelessness
- ✓ Young people
- ✓ Pregnant women
- ✓ Parents
- ✓ People with cognitive impairments
- ✓ People with co-occurring mental health issues
- ✓ People who have contact with the criminal justice system

1A Enhancing Existing Partnership Hubs

Examples of enhancements:

- ❖ Adding clinical AOD specialists or AOD in-reach to a non-AOD partnership or an Aboriginal Health Service
- ❖ An AOD partnership adding psychologists to provide AOD counselling and a mental health nurse
- ❖ Establishing a care navigator or care coordinator role
- ❖ Bringing in people with lived/living experience to provide peer support
- ❖ Social and emotional wellbeing workers
- ❖ Sharing an AOD nurse practitioners across services and sectors e.g., with Justice Health or LHDs
- ❖ Bringing in primary care services (e.g. GPs, PHN funded programs, community health services)
- ❖ Expanding the AOD outreach catchment and adding a social worker
- ❖ Using brokerage for dental services
- ❖ Adding violence, abuse and neglect services.

AND strong collaborative pathways to broader social and health services

1B Priority Population Hubs

Examples of potential Hub partnerships that would meet the criteria:

- ❖ A partnership between an ACCO and an Aboriginal Medical Service who are proposing to open an Aboriginal AOD Hub.
- ❖ A partnership between several Aboriginal Medical Services and a non-Aboriginal NGO proposing to open an Aboriginal AOD Hub (the lead must be an ACCO).
- ❖ A partnership between a multicultural NGO and an LHD Drug and Alcohol team (the lead applicant must be the NGO) to establish a CALD AOD Hub
- ❖ A partnership between a multicultural NGO, an AOD NGO and a homeless and mental health service
- ❖ A partnership between a LGBTIQ+ NGO and an NGO that currently provides AOD care, who plan to establish a new LGBTIQ+ Hub.

And strong collaborative pathways to broader social and health services

Stream 1 Hub funding

Stream	Total annual funding available per grant stream	Minimum annual funding per grant	Maximum annual funding per grant	Minimum annual ACCO funding
1A	\$3,000,000	N/A	\$600,000	\$600,000
1B	\$3,000,000	N/A	\$1,000,000	As per the successful Hub proposal budget *

Eligibility requirements - organisations

Non-government organisations:

Not-for profit entity incorporated under any of the following:

- Associations Incorporation Act 2009 (NSW)
- Corporations Act 2001 (Cth)
- Corporations (Aboriginal and Torres Strait Islander) Act 2006
- Other Australian legislation

Aboriginal Community Controlled Organisations:

- Not-for profit
- Incorporated
- controlled and operated by Aboriginal and/or Torres Strait Islander people
- connected to the community, or communities, in which they deliver the services
- governed by a majority Aboriginal and/or Torres Strait Islander governing body

Eligibility requirements - accreditation

At least one of the partner organisations applying for funding to deliver a Hub is (or working towards accreditation) against one of the following accreditation standards*:

- ❖ Evaluation and Quality Improvement Program (EQulP)
- ❖ QIC Health and Community Service Standards
- ❖ Australian Service Excellence Standards
- ❖ National Standards for Mental Health Services
- ❖ The Standards for general practices (5th edition)

Data supported applications

- ❖ Priority will be given to **NSW rural and regional locations**
- ❖ Also metropolitan areas with **unmet need**
- ❖ A local needs analysis and/or other **evidence to support the need** in the location should be demonstrated. This will be scored in your response.
- ❖ A list of publicly available data is on the [CAOD website](#) under the heading **information sources**

Data supported applications

Service mapping data is available that may be useful to:

- ❖ identify service gaps or potential duplication of services
- ❖ find other local services to partner with or form referral pathways with.

Excel spreadsheet of relevant services by location - filter by a number of variables.

If you wish to obtain the service list please email MOH-CAOD-SCI@health.nsw.gov.au to request.

AOD Hubs Application requirements

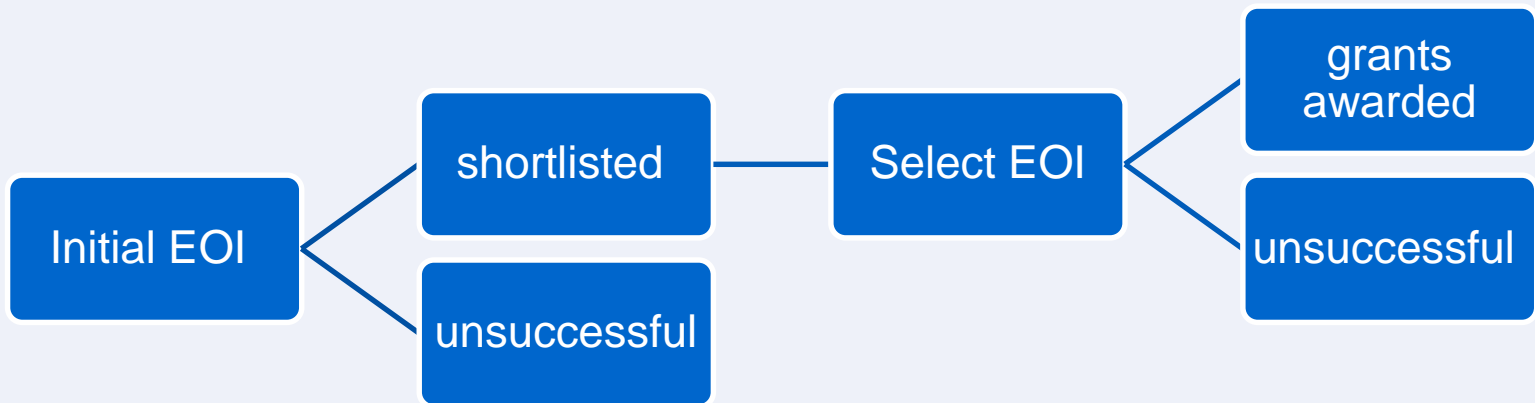
Required documents for Stream 1A

- ✓ Schedule 1A. Initial EOI form

Required documents for Stream 1B

- ✓ Schedule 1B. Initial EOI form

2 stage EOI process



Key resources

- Grant Opportunity Guidelines
- Grant application documents (MS Word)
- Information sources on the CAOD website
- Service list (available on request)
- Grant Q&A
- Briefing session recording and slides

Important dates

26 July 2023	Applications opened for Initial EOI
24 August 2023	Applications for Initial EOI close
September *	Stage 2 Select EOI open
October*	Stage 2 Select EOI close
November*	Approval and communication of grant application outcomes
December 2023*	Grant funding agreements commence
* Dates provided are indicative and may change as the grant tender progresses	

Key contacts

Submission of grant enquiries	moh-caod-sci@health.nsw.gov.au
Submission of grant applications	moh-caod-sci@health.nsw.gov.au
NSW Health grant webpage (for updates and Q and A)	https://www.health.nsw.gov.au/aod/Pages/hubs.aspx
NSW Government Grants website	https://www.nsw.gov.au/grants-and-funding/alcohol-and-other-drug-hub-grants
Principal contact: Hubs Grants	Tanya Bosch Email: tanya.bosch@health.nsw.gov.au
Probity Advisor	John Pinhorn, Procure Group jpinhorn@procuregroup.com.au

Networking

Organisations who would like to connect with others please add your:

- ❖ name
- ❖ the name and location of your service
- ❖ email

into the Teams chat at the end of this session.

Please take note and reach out to each other and make connections.

You can discuss potential opportunities to partner or work together on a Hub, another service, or make a contact for the future.

Question and Answer

Q: How many applications can an organisation make?

A: Organisations can make one application to each stream they are eligible for. If you wish to apply to provide services in more than one area, this should be part of one grant application for a total that is no more than the maximum for that stream.

Q: Can organisations submit an application partnered with another organisation?

A: Yes, partnerships and consortia of non-government organisations and Aboriginal Community Controlled Organisations are eligible to apply and encouraged.

Q: Can NGOs or ACCOs partner with LHDs?

A: Yes, but LHDs cannot be the lead partner for this stream. As LHDs are key service providers in the AOD and broader health space, strong collaborative arrangements will be necessary at a minimum.

Question and Answer

Q: What if we have applied for Treatment and Access Grants and have not yet heard if we are successful?

A: Please indicate in the application which pathways are dependent on other funding.

Q: What do you require for a letter of support?

A. A short email is sufficient.

Q: What evidence of need/data do you require?

A: Some data sources and service lists have been suggested/provided, however we recommend you supplement this with your own local knowledge/evidence as well.

Question and Answer

Q. Do the Hub partners need to be co-located?

A: No – multi-site partnerships are fine – as long as you show us how you work together.

Q. How can organisations demonstrate an existing partnership or collaborative arrangement?

A: Evidence can include copies of past emails setting out the working arrangements, an MoU or protocol, minutes from joint committee or working group meetings.

Q: Is capital funding available?

A: There is no capital funding available for these grants. However operational funding can be used for minor infrastructure and fit out costs.

Thank you!

