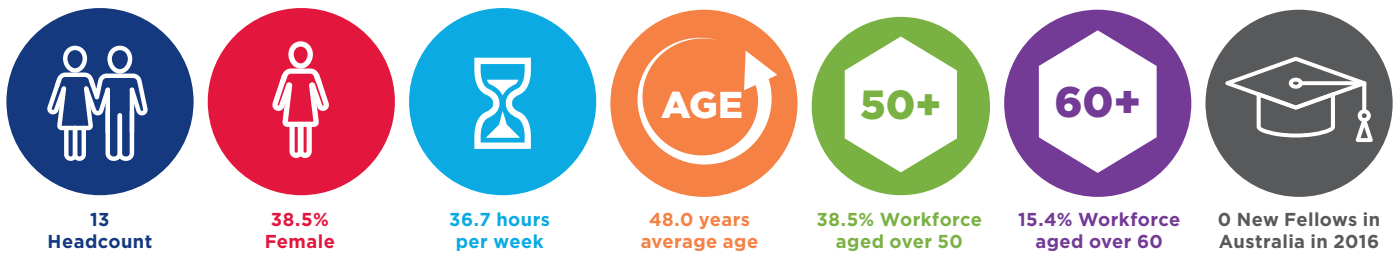


Paediatrics – Intensive Care Medicine

The Workforce

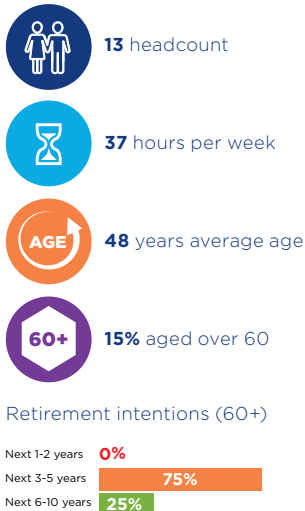
Intensive Care Physicians (Intensivists) practice intensive care medicine which encompasses the assessment, resuscitation and ongoing management of critically ill patients with life-threatening single and multiple organ system failure. The Royal Australasian College of Physicians (RACP) is accredited by the Australian Medical Council (AMC) to deliver paediatrics and child health training.

Workforce Characteristics in 2015

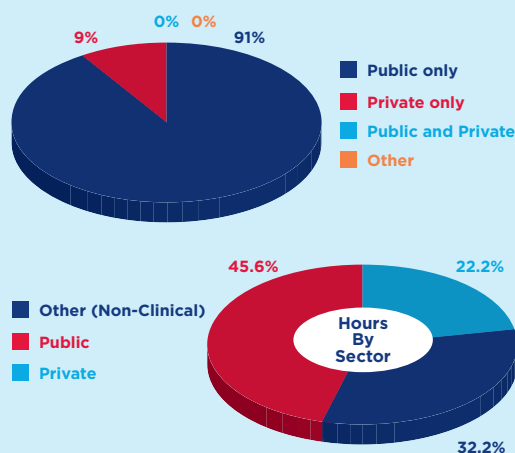


Supply and Distribution

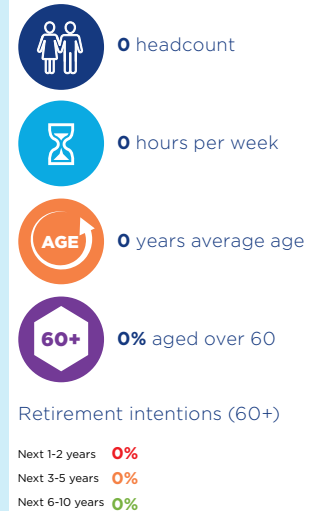
Metropolitan Sydney



Total NSW Workforce by Sector (percent)



Non-Metropolitan Sydney



* Data from records with less than 5 headcount is to be restricted due to privacy requirements

Trainees



Advanced Trainees in NSW:

2015	2016	2017
NA	NA	NA



NSW Trainees
as % of
Australia 2017



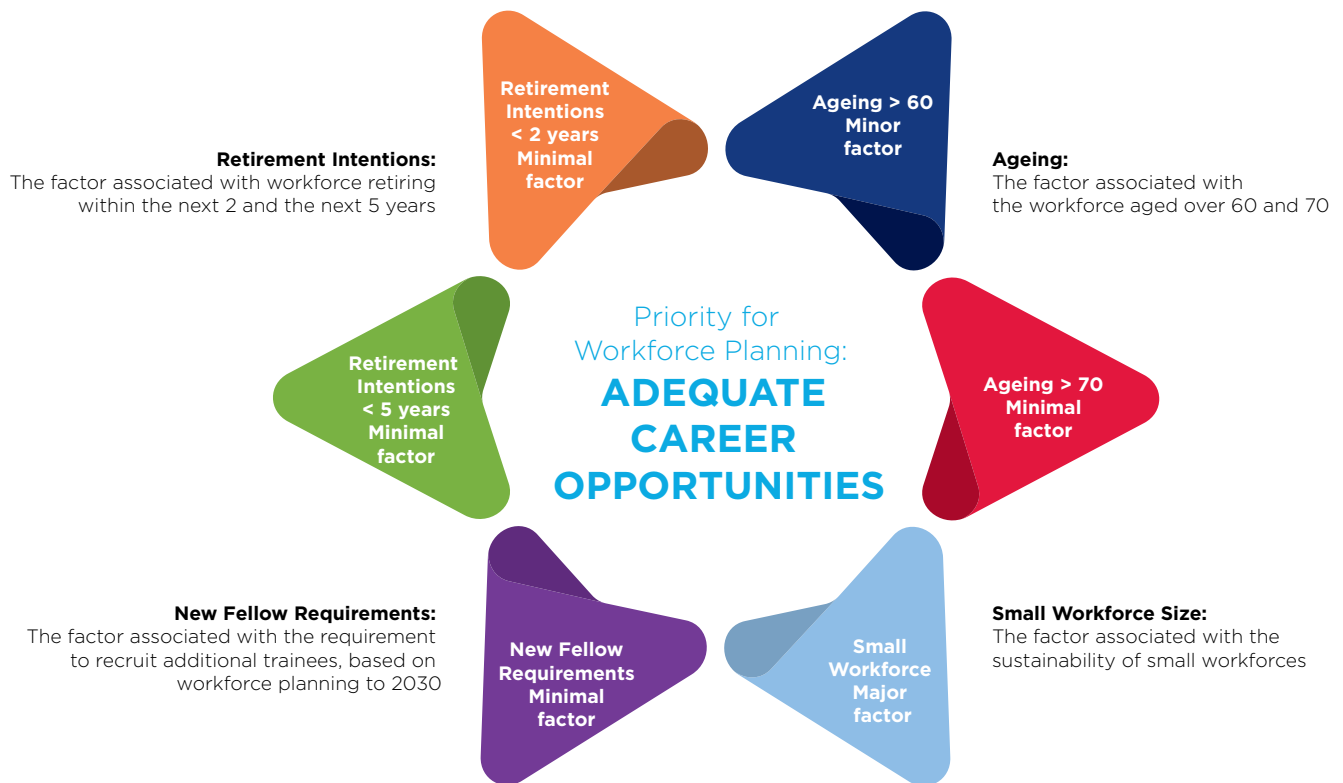
Proportion
female
trainees in
Australia 2017

The Future in NSW - Workforce Planning to 2030

Workforce projections are provided for a low and high demand scenario. Where requirements for both scenarios are met without the need for additional fellows, the projected “No Growth” scenario workforce data is provided.



Workforce Planning Priority and Assessment Framework



Rating Key: Minimal Factor < Minor Factor < Moderate Factor < Major Factor

Workforce Modelling Considerations

- Workforce modelling is based on current models of care. Any change in the models may impact on requirements.
- Any changes to current training programs will affect the workforce modelling outcome.
- Workforce modelling is based on current workforce hours profile by age co-hours. Any changes to hours worked by future clinicians will affect the model.
- There is an accepted error rate of plus or minus two per cent within workforce modelling
- The model does not address any mal-distribution either by location (rural or regional) or sector (public or private)