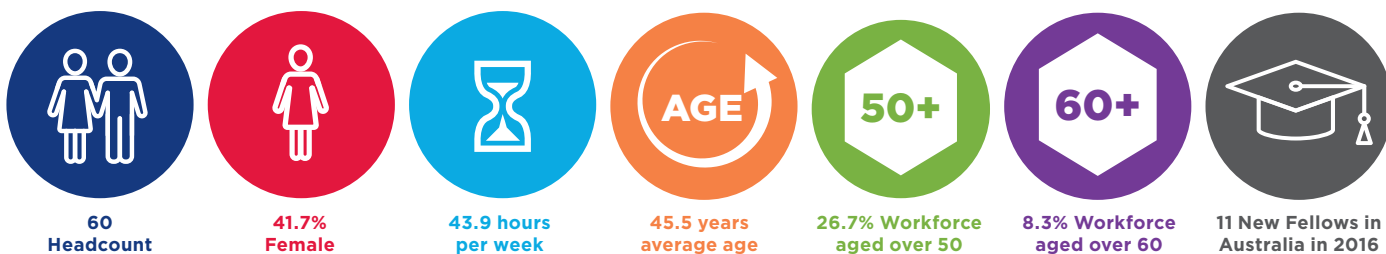


# Paediatrics – Neonatal & Perinatal

## The Workforce

Paediatrics is a specialty which provides expert diagnosis, treatment and care for infants, children and young people. Paediatricians may have specific fields of practice e.g. endocrinology, general, neonatal & perinatal medicine, medical oncology or rehabilitation medicine. The Royal Australasian College of Physicians (RACP) is accredited by the Australian Medical Council (AMC) to deliver paediatrics and child health training.

## Workforce Characteristics in 2015

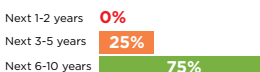


## Supply and Distribution

### Metropolitan Sydney

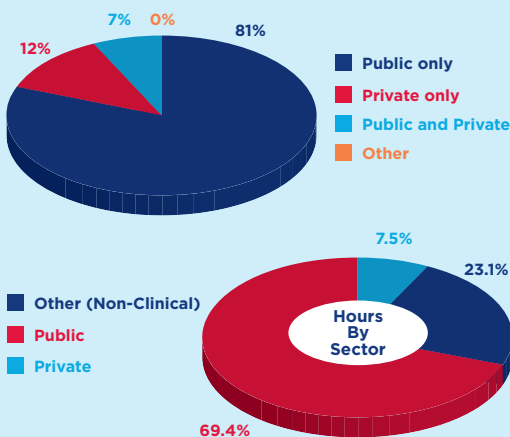


#### Retirement intentions (60+)



### Total NSW

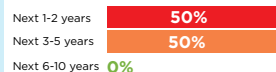
#### Workforce by Sector (percent)



### Non-Metropolitan Sydney



#### Retirement intentions (60+)



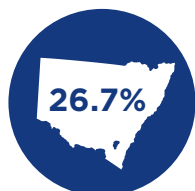
\* Data from records with less than 5 headcount is to be restricted due to privacy requirements

## Trainees

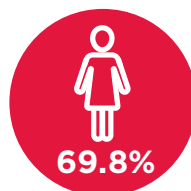


### Advanced Trainees in NSW:

2015	2016	2017
24	32	23



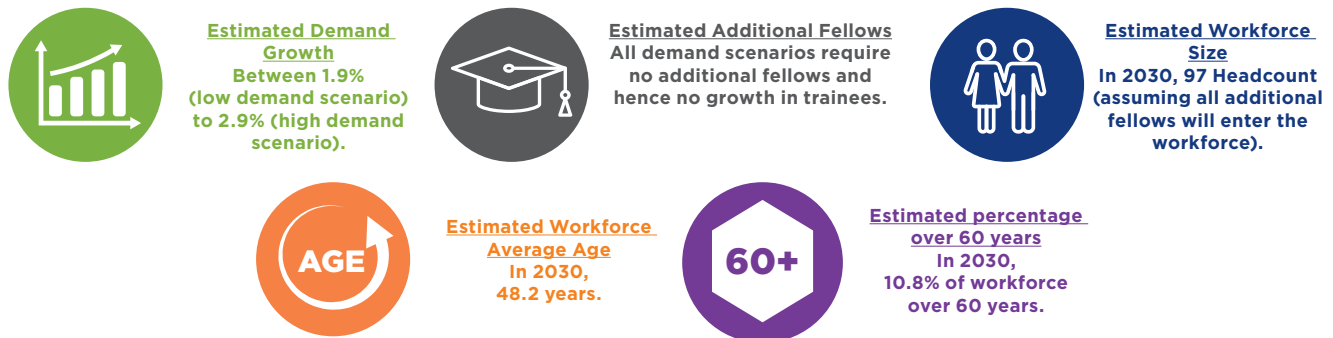
NSW Trainees as % of Australia 2017



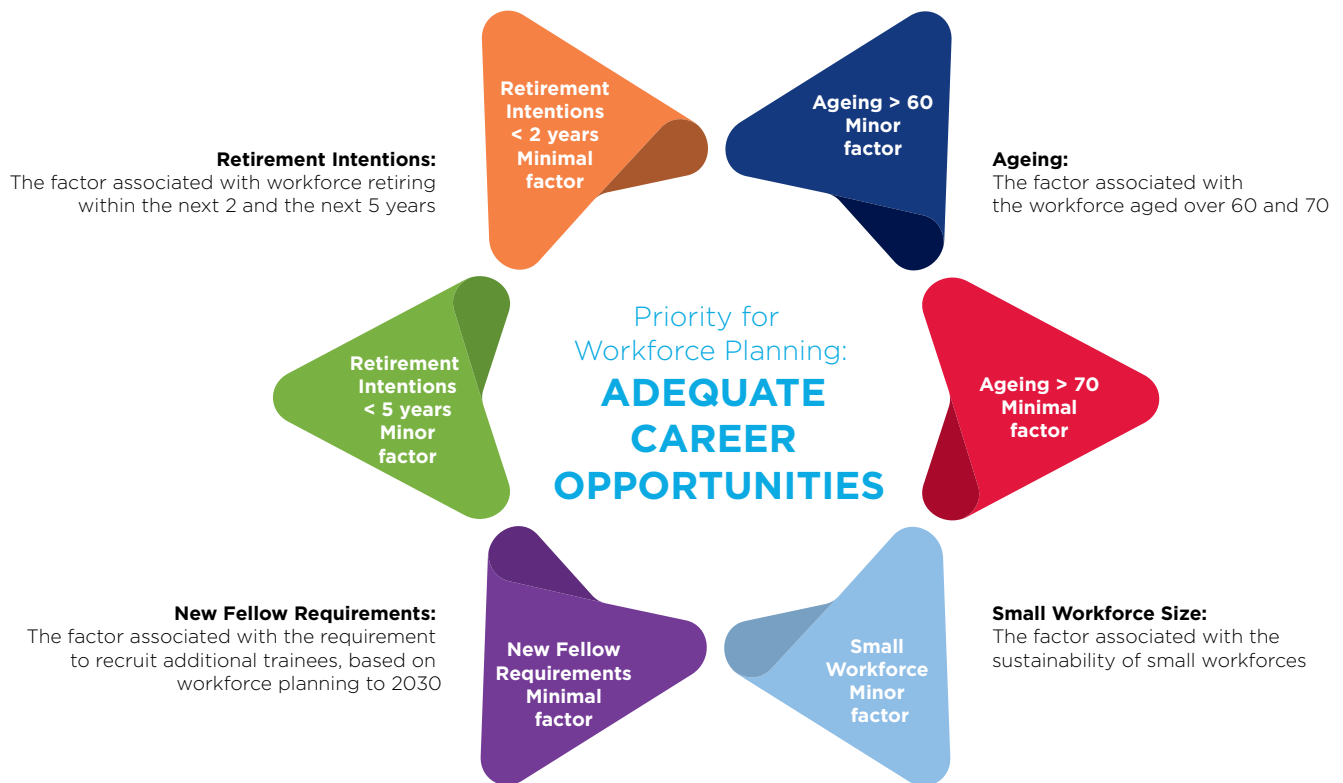
Proportion female trainees in Australia 2017

## The Future in NSW - Workforce Planning to 2030

Workforce projections are provided for a low and high demand scenario. Where requirements for both scenarios are met without the need for additional fellows, the projected “No Growth” scenario workforce data is provided.



## Workforce Planning Priority and Assessment Framework



**Rating Key:** Minimal Factor < Minor Factor < Moderate Factor < Major Factor

## Workforce Modelling Considerations

- Workforce modelling is based on current models of care. Any change in the models may impact on requirements.
- Any changes to current training programs will affect the workforce modelling outcome.
- Workforce modelling is based on current workforce hours profile by age co-hours. Any changes to hours worked by future clinicians will affect the model.
- There is an accepted error rate of plus or minus two per cent within workforce modelling
- The model does not address any mal-distribution either by location (rural or regional) or sector (public or private)