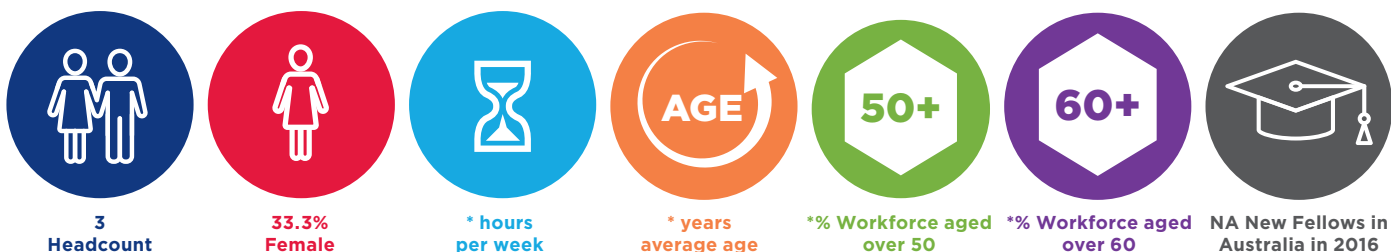


# Radiology – Diagnostic Ultrasound

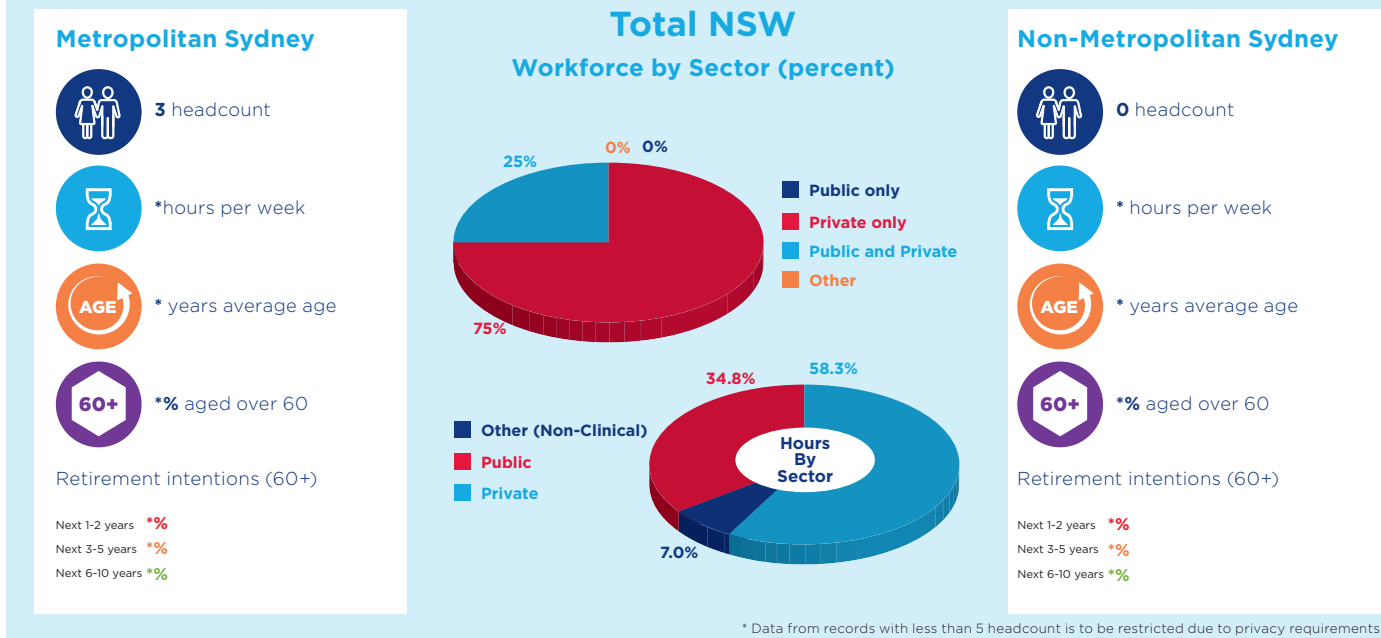
## The Workforce

A Diagnostic ultrasound specialist, also called sonography or diagnostic medical sonography specialist, is a specialist utilising an imaging method that uses high-frequency sound waves to produce images of structures within your body. The images can provide valuable information for diagnosing and treating a variety of diseases and conditions. The Royal Australian and New Zealand College of Radiologists (RANZCR) is accredited by the Australian Medical Council (AMC) to deliver radiology training.

### Workforce Characteristics in 2015



## Supply and Distribution

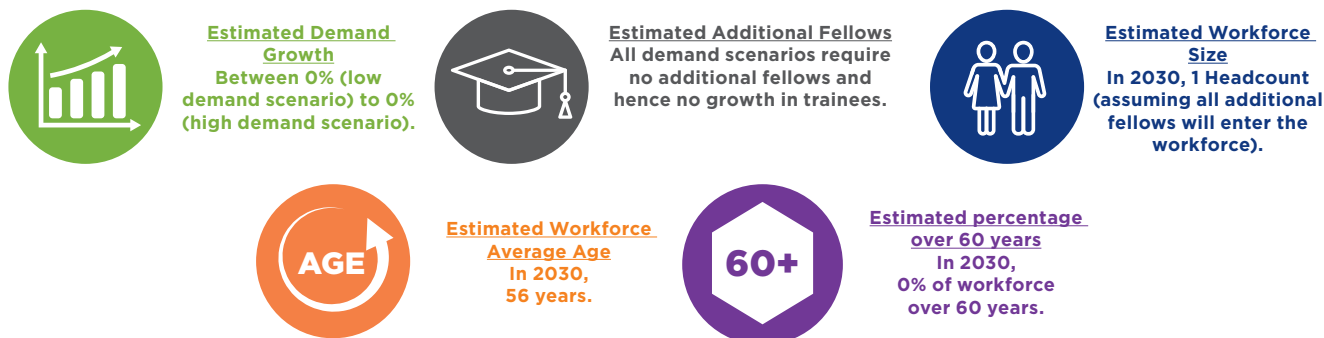


## Trainees



## The Future in NSW - Workforce Planning to 2030

Workforce projections are provided for a low and high demand scenario. Where requirements for both scenarios are met without the need for additional fellows, the projected “No Growth” scenario workforce data is provided.



## Workforce Planning Priority and Assessment Framework



**Rating Key:** Minimal Factor < Minor Factor < Moderate Factor < Major Factor

## Workforce Modelling Considerations

- Workforce modelling is based on current models of care. Any change in the models may impact on requirements.
- Any changes to current training programs will affect the workforce modelling outcome.
- Workforce modelling is based on current workforce hours profile by age co-hours. Any changes to hours worked by future clinicians will affect the model.
- There is an accepted error rate of plus or minus two per cent within workforce modelling
- The model does not address any mal-distribution either by location (rural or regional) or sector (public or private)