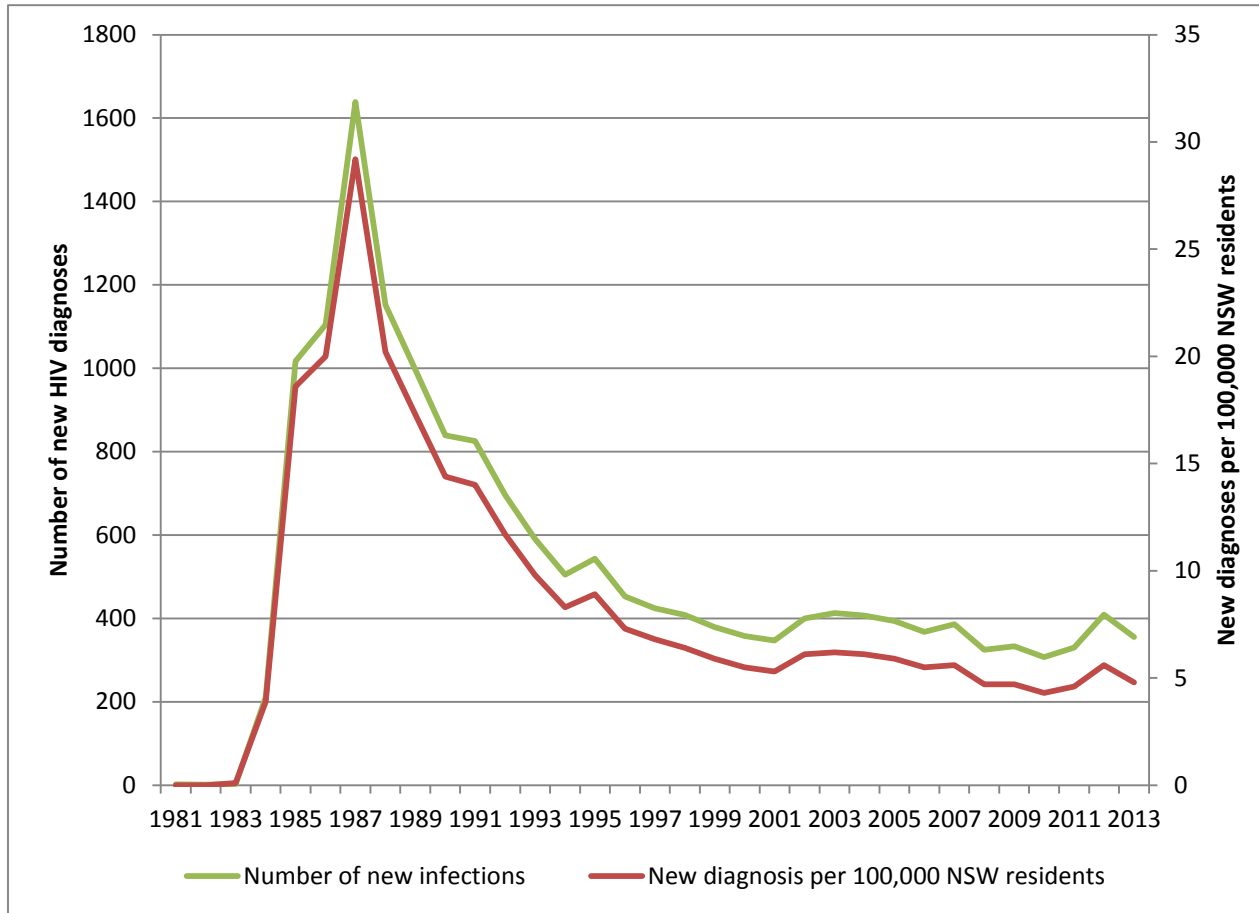


**Table. NSW residents newly diagnosed with HIV infection by year of diagnosis and case characteristics, to 31 March 2014**

	2008 n (%)	2009 n (%)	2010 n (%)	2011 n (%)	2012 n (%)	2013 n (%)	Quarter 1 2014 n (%)	1981–31/3/14 n (%)
<b>Total</b>	<b>325 (100%)</b>	<b>333 (100%)</b>	<b>307 (100%)</b>	<b>330 (100%)</b>	<b>409 (100%)</b>	<b>355 (100%)</b>	<b>103 (100%)</b>	<b>17024 (100%)</b>
<b>Gender</b>								
Male	293 (90.2%)	292 (87.7%)	282 (91.9%)	309 (93.6%)	372 (91.0%)	325 (91.5%)	101 (98.1%)	15658 (92.0%)
Female	32 (9.8%)	39 (11.7%)	23 (7.5%)	21 (6.4%)	36 (8.8%)	27 (7.6%)	2 (1.9%)	1080 (6.3%)
Transgender	0 (0.0%)	2 (0.6%)	2 (0.7%)	0 (0.0%)	1 (0.2%)	3 (0.8%)	0 (0.0%)	38 (0.2%)
Not stated	0 (0.0%)	0 (0.0%)	0 (0.0%)	0 (0.0%)	0 (0.0%)	0 (0.0%)	0 (0.0%)	248 (1.5%)
<b>Aboriginal people</b>								
Aboriginal person	8 (2.5%)	9 (2.7%)	7 (2.3%)	5 (1.5%)	11 (2.7%)	8 (2.3%)	2 (1.9%)	154 (0.9%)
Non-Aboriginal person	301 (92.6%)	314 (94.3%)	291 (94.8%)	322 (97.6%)	391 (95.6%)	341 (96.1%)	99 (96.1%)	9910 (58.2%)
Not stated	16 (4.9%)	10 (3.0%)	9 (2.9%)	3 (0.9%)	7 (1.7%)	6 (1.7%)	2 (1.9%)	6960 (40.9%)
<b>Age at diagnosis in years</b>								
0 – 4	0 (0.0%)	1 (0.3%)	1 (0.3%)	0 (0.0%)	0 (0.0%)	0 (0.0%)	0 (0.0%)	40 (0.2%)
5 - 14	0 (0.0%)	1 (0.3%)	0 (0.0%)	0 (0.0%)	0 (0.0%)	1 (0.3%)	0 (0.0%)	58 (0.3%)
15 - 19	3 (0.9%)	3 (0.9%)	5 (1.6%)	6 (1.8%)	9 (2.2%)	9 (2.5%)	0 (0.0%)	302 (1.8%)
20 - 24	39 (12.0%)	33 (9.9%)	29 (9.4%)	34 (10.3%)	44 (10.8%)	37 (10.4%)	17 (16.5%)	2067 (12.1%)
25 - 29	58 (17.8%)	57 (17.1%)	56 (18.2%)	56 (17.0%)	76 (18.6%)	64 (18.0%)	14 (13.6%)	3370 (19.8%)
30 - 39	107 (32.9%)	100 (30.0%)	93 (30.3%)	123 (37.3%)	133 (32.5%)	90 (25.4%)	32 (31.1%)	6250 (36.7%)
40 - 49	84 (25.8%)	88 (26.4%)	82 (26.7%)	70 (21.2%)	85 (20.8%)	90 (25.4%)	19 (18.4%)	3300 (19.4%)
50 - 59	24 (7.4%)	40 (12.0%)	29 (9.4%)	35 (10.6%)	42 (10.3%)	47 (13.2%)	15 (14.6%)	1147 (6.7%)
60 +	10 (3.1%)	10 (3.0%)	12 (3.9%)	6 (1.8%)	20 (4.9%)	17 (4.8%)	6 (5.8%)	403 (2.4%)
Not reported	0 (0.0%)	0 (0.0%)	0 (0.0%)	0 (0.0%)	0 (0.0%)	0 (0.0%)	0 (0.0%)	87 (0.5%)
<b>HIV risk exposure</b>								
Men having sex with men (MSM)	236 (72.6%)	219 (65.8%)	228 (74.3%)	268 (81.2%)	318 (77.8%)	265 (74.6%)	82 (79.6%)	10650 (62.6%)
MSM and injects drugs	11 (3.4%)	18 (5.4%)	8 (2.6%)	10 (3.0%)	12 (2.9%)	13 (3.7%)	5 (4.9%)	474 (2.8%)
Heterosexual contact	64 (19.7%)	75 (22.5%)	51 (16.6%)	41 (12.4%)	57 (13.9%)	61 (17.2%)	9 (8.7%)	1535 (9.0%)
Person who injects drug	12 (3.7%)	11 (3.3%)	9 (2.9%)	8 (2.4%)	10 (2.4%)	9 (2.5%)	1 (1.0%)	551 (3.2%)
Haemophilia, coagulation disorders, or blood tissue recipient	0 (0.0%)	1 (0.3%)	0 (0.0%)	0 (0.0%)	0 (0.0%)	0 (0.0%)	0 (0.0%)	276 (1.6%)
Vertical	0 (0.0%)	2 (0.6%)	1 (0.3%)	0 (0.0%)	0 (0.0%)	1 (0.3%)	0 (0.0%)	45 (0.3%)
Other / undetermined	2 (0.6%)	7 (2.1%)	10 (3.3%)	3 (0.9%)	12 (2.9%)	6 (1.7%)	6 (5.8%)	3493 (20.5%)
<b>Local Health District of residence at diagnosis</b>								
South Eastern Sydney	117 (36.0%)	107 (32.1%)	110 (35.8%)	128 (38.8%)	150 (36.7%)	125 (35.2%)	31 (30.1%)	5309 (31.2%)
Sydney	78 (24.0%)	90 (27.0%)	77 (25.1%)	83 (25.2%)	111 (27.1%)	90 (25.4%)	26 (25.2%)	2776 (16.3%)
Northern Sydney	25 (7.7%)	38 (11.4%)	19 (6.2%)	24 (7.3%)	23 (5.6%)	26 (7.3%)	6 (5.8%)	943 (5.5%)
Western Sydney	26 (8.0%)	21 (6.3%)	20 (6.5%)	31 (9.4%)	25 (6.1%)	26 (7.3%)	10 (9.7%)	677 (4.0%)
South Western Sydney	16 (4.9%)	22 (6.6%)	23 (7.5%)	18 (5.5%)	31 (7.6%)	29 (8.2%)	8 (7.8%)	599 (3.5%)
Hunter New England	14 (4.3%)	16 (4.8%)	16 (5.2%)	10 (3.0%)	14 (3.4%)	18 (5.1%)	7 (6.8%)	443 (2.6%)
Nepean Blue Mountains	7 (2.2%)	3 (0.9%)	3 (1.0%)	4 (1.2%)	5 (1.2%)	3 (0.8%)	1 (1.0%)	248 (1.5%)
Illawarra Shoalhaven	3 (0.9%)	5 (1.5%)	8 (2.6%)	5 (1.5%)	9 (2.2%)	7 (2.0%)	5 (4.9%)	215 (1.3%)
Central Coast	6 (1.8%)	5 (1.5%)	5 (1.6%)	4 (1.2%)	10 (2.4%)	6 (1.7%)	3 (2.9%)	187 (1.1%)
Northern NSW	4 (1.2%)	4 (1.2%)	9 (2.9%)	11 (3.3%)	5 (1.2%)	5 (1.4%)	3 (2.9%)	183 (1.1%)
Mid North Coast	8 (2.5%)	6 (1.8%)	3 (1.0%)	4 (1.2%)	3 (0.7%)	6 (1.7%)	1 (1.0%)	133 (0.8%)
Western NSW	3 (0.9%)	3 (0.9%)	4 (1.3%)	3 (0.9%)	7 (1.7%)	5 (1.4%)	0 (0%)	116 (0.7%)
Murrumbidgee	3 (0.9%)	1 (0.3%)	6 (2.0%)	2 (0.6%)	3 (0.7%)	2 (0.6%)	0 (0%)	57 (0.3%)
Southern NSW	3 (0.9%)	6 (1.8%)	1 (0.3%)	2 (0.6%)	7 (1.7%)	4 (1.1%)	0 (0%)	50 (0.3%)
Albury	0 (0.0%)	1 (0.3%)	1 (0.3%)	0 (0.0%)	2 (0.5%)	1 (0.3%)	0 (0%)	25 (0.1%)
Far West	0 (0.0%)	2 (0.6%)	0 (0.0%)	0 (0.0%)	2 (0.5%)	0 (0.0%)	0 (0%)	8 (0.0%)
Justice Health	1 (0.3%)	1 (0.3%)	1 (0.3%)	0 (0.0%)	1 (0.2%)	1 (0.3%)	1 (1.0%)	6 (0.0%)
Unknown	11 (3.4%)	2 (0.6%)	1 (0.3%)	1 (0.3%)	1 (0.2%)	1 (0.3%)	1 (1.0%)	5049 (29.7%)
<b>Total</b>	<b>325</b>	<b>333</b>	<b>307</b>	<b>330</b>	<b>409</b>	<b>355</b>	<b>103</b>	<b>17024</b>

Date source: NSW HIV/AIDS database, Health Protection NSW, extracted 7 May 2014

Epidemic curve: Number and crude rate per 100,000 NSW residents of new HIV diagnoses in NSW 1982 to 2013



Date source: NSW HIV/AIDS database, Health Protection NSW, extracted 7 May 2014