



Certificate of Accreditation

Sewage Management Facility

Sewage Ejection Pump Station

This Certificate of Accreditation is issued by the Secretary of the NSW Ministry of Health pursuant to Section 41(1) of the Local Government (General) Regulation 2021.

System: E/One Viscount Range SEPS

Manufacturer: Environment One Corporation

Of: 2773 Balltown Road, Niskayuna, NY, 12309, USA

The E/One Viscount Range SEPS as described in the attached Schedule have been accredited as sewage management facilities for use in single domestic premises in NSW. The pump well is manufactured to the Australian / New Zealand Standard AS/NZS 1546.1:2008 On-site domestic wastewater treatment units - septic tanks.

P. Bylovel

*A/Director, Environmental Health
for Secretary (delegation PH335)*

Issued: 15 / Nov / 23

Certificate No: SEPS009

Expires: 31 December 2028



Accreditation Schedule

The Certificate of Accreditation applies to the following models of SEPS in accordance with the attached plans:

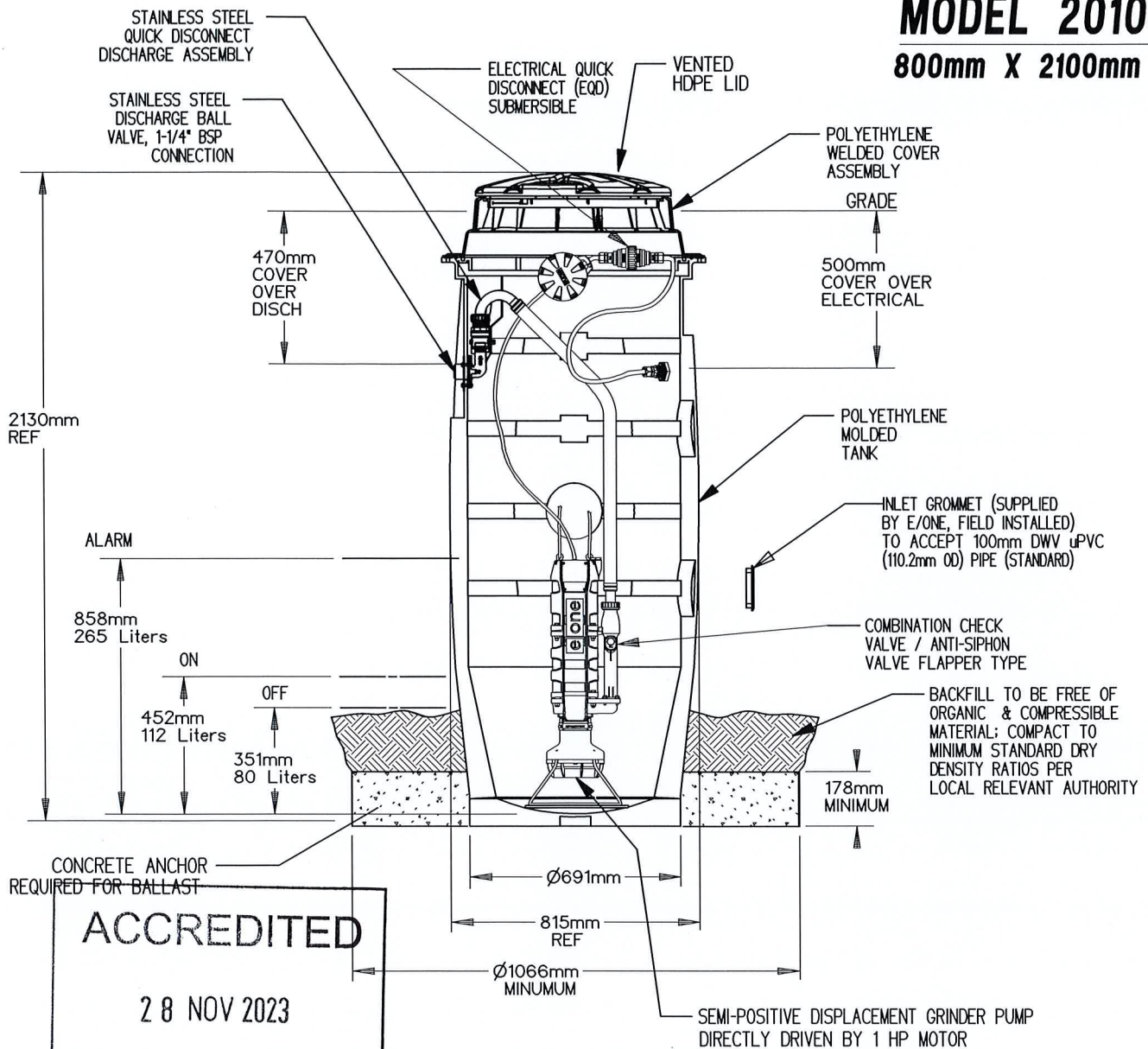
- 2010iW-800x2100
- 2010iW-800x2400
- 2010iW-800x2700
- 2011iW-1000x2200
- 2013iW-1050x1700
- 2014iW-1100x2200

The above sewage ejection pump stations consist of:

- *A cylindrical roto moulded polyethylene pump well and lid manufactured by Viscount Plastics Pty Ltd, Carrum Downs, Victoria;*
- *A polyethylene extension collar, 300 mm high, is available for installation in conjunction with any E/One tank model.*
- *An E/One Extreme progressive cavity grinder pump fitted with start, stop, and high-level switches in a Simplex or Duplex combination;*
- *A flexible discharge hose fitted to a combination anti-syphon/check valve and shut-off valve on the outlet of the grinder pump. The discharge hose is connected to a 40 mm diameter house pressure main to the sewer through a boundary connection box located inside or near the property; and*
- *A control panel with an audible and visible alarm.*

MODEL 2010iW

800mm X 2100mm




CONCRETE ANCHOR
REQUIRED FOR BALLAST

ACCREDITED

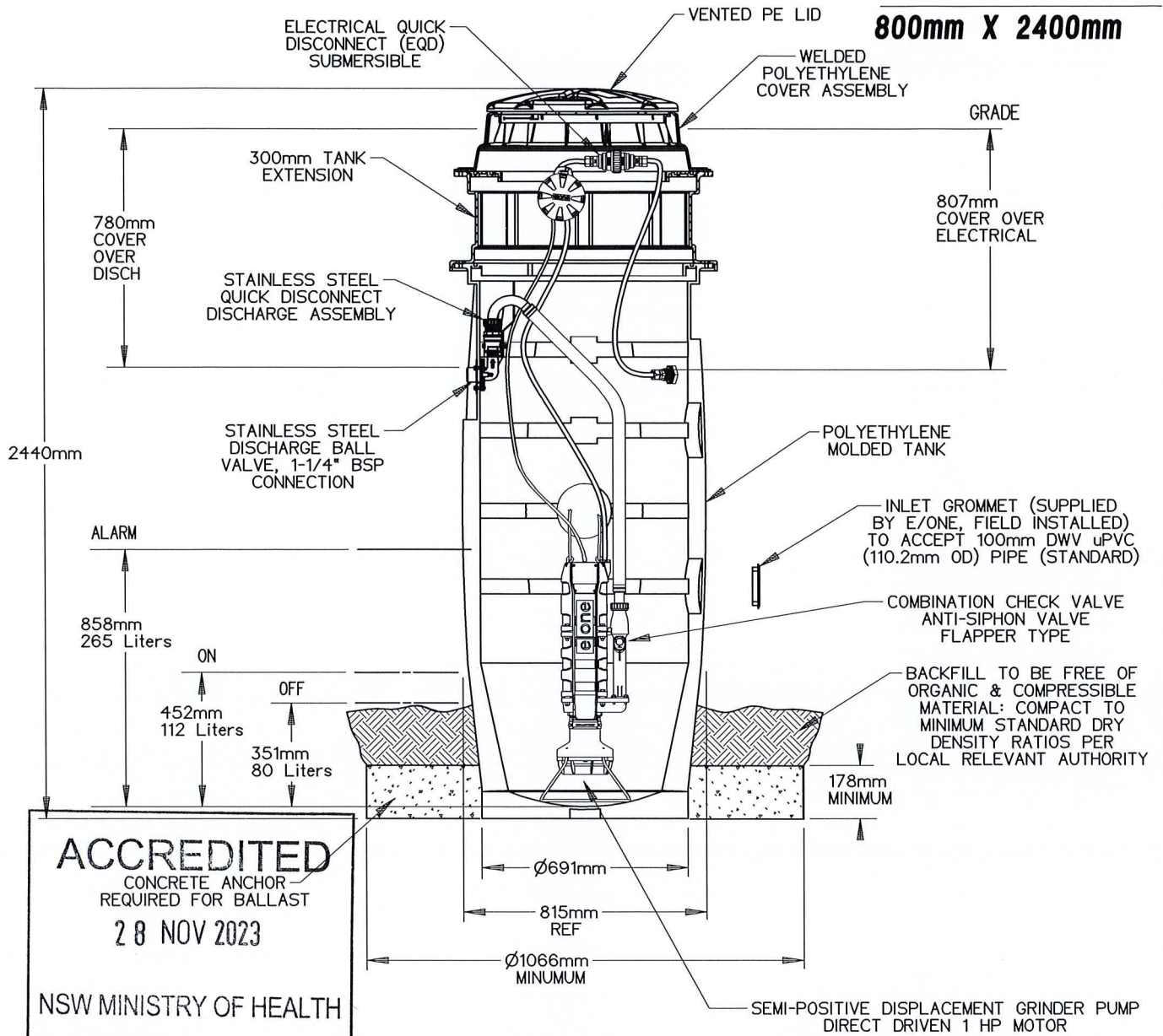
2 8 NOV 2023

NSW MINISTRY OF HEALTH

SPECIFICATIONS								2010iW - 800 x 2100				
BASIN	Diameter (mm)	Height (mm)	Weight (kg)	Total Capacity (l)	Capacity Above Alarm (l)	Ballast (m ³)	Inlet Pipe Size (mm)	KDO	PD	09/25/23	F	N/A
	800	2100	74	718	453	SEE DWG	100	DR BY	CHK'D	DATE	ISSUE	SCALE
PUMP	Pump (s)	Dimensions (mm)	Weight (kg)	Nominal Pump Rate @ 0m TDH (lps)	Nominal Pump Rate @ 20m TDH (lps)	Nominal Pump Rate @ 56m TDH (lps)	Discharge Size (mm)	 <p>MODEL 2010iW DETAIL SHEET (800mm X 2100mm)</p> <p>PA2055P01</p>				
	Simplex (1)	330 X 800	47	75	63	40	32					
ELECTRICAL	Voltage (VAC)	Phase	Cycle (Hz)	Supply Cable (m)	Alarm Panel							
	240	Single	50	As Specified	Simplex (1)							

MODEL 2010iW

800mm X 2400mm

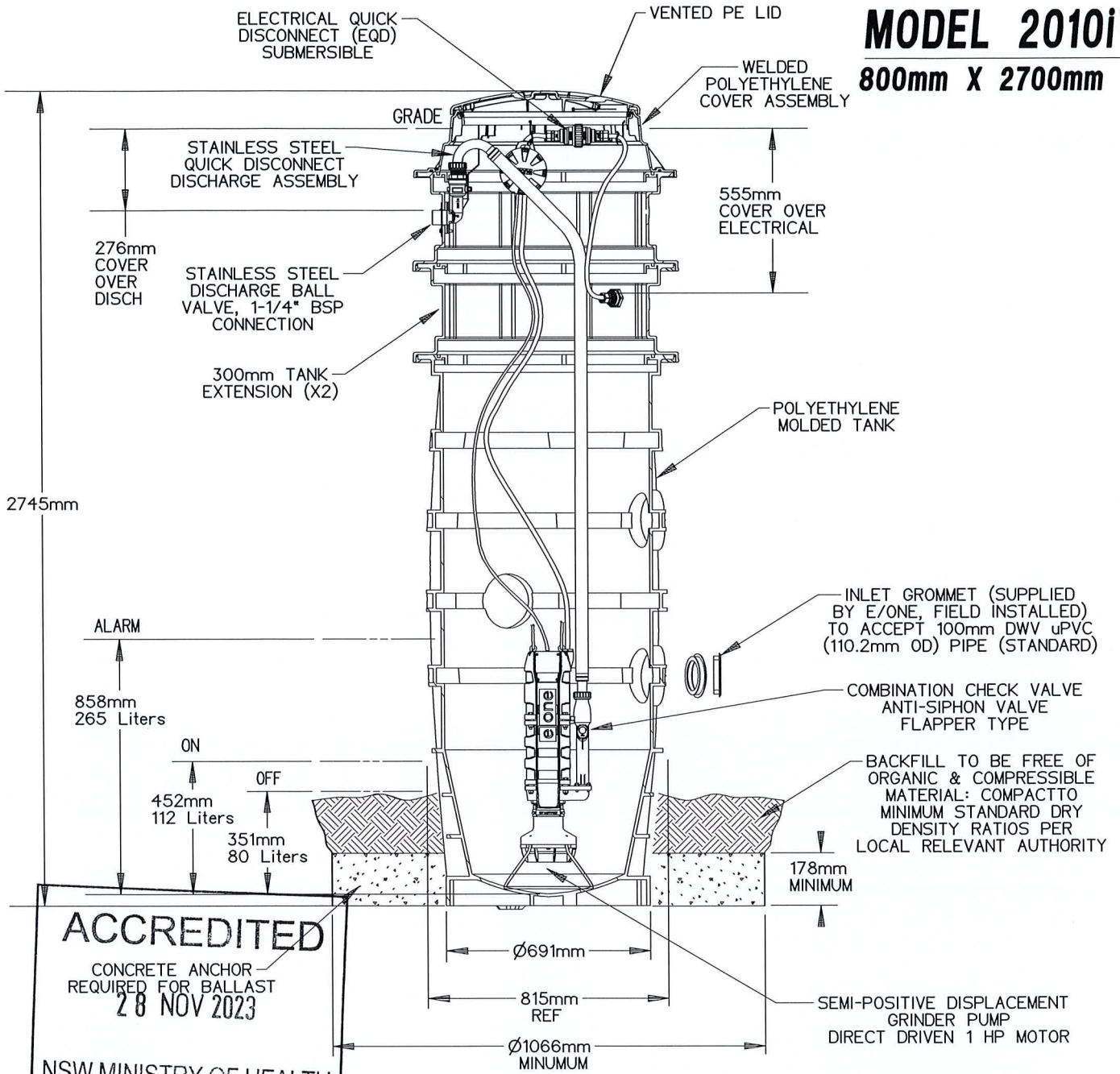


ACCREDITED
 CONCRETE ANCHOR
 REQUIRED FOR BALLAST
 28 NOV 2023
 NSW MINISTRY OF HEALTH

SPECIFICATIONS								2010iW - 800 x 2400				
BASIN	Diameter (mm)	Height (mm)	Weight (kg)	Total Capacity (l)	Capacity Above Alarm (l)	Ballast (m ³)	Inlet Pipe Size (mm)	SGS	PD	10/12/23	-	N/A
	800	2400	84	828	563	SEE DWG	100	DR BY	CHK'D	DATE	ISSUE	SCALE
PUMP	Pump (s)	Dimensions (mm)	Weight (kg)	Nominal Pump Rate @ 0m TDH (lps)	Nominal Pump Rate @ 20m TDH (lps)	Nominal Pump Rate @ 56m TDH (lps)	Discharge Size (mm)	 2010iW, DETAIL SHEET (800mm X 2400mm) NA0836P01				
	Simplex (1)	330 X 800	47	75	63	40	32					
ELECTRICAL	Voltage (VAC)	Phase	Cycle (Hz)	Supply Cable (m)	Alarm Panel							
	240	Single	50	As Specified	Simplex (1)							

MODEL 2010iW

800mm X 2700mm



ACCREDITED
 CONCRETE ANCHOR
 REQUIRED FOR BALLAST
 28 NOV 2023
 NSW MINISTRY OF HEALTH

SPECIFICATIONS 2010iW - 800 x 2700

BASIN	Diameter (mm)	Height (mm)	Weight (kg)	Total Capacity (l)	Capacity Above Alarm (l)	Ballast (m ³)	Inlet Pipe Size (mm)
	800	2700	94	938	673	SEE DWG	100
PUMP	Pump (s)	Dimensions (mm)	Weight (kg)	Nominal Pump Rate @ 0m TDH (lps)	Nominal Pump Rate @ 20m TDH (lps)	Nominal Pump Rate @ 56m TDH (lps)	Discharge Size (mm)
	Simplex (1)	330 X 800	47	.75	.83	.40	32
ELECTRICAL	Voltage (VAC)	Phase	Cycle (Hz)	Supply Cable (m)	Alarm Panel		
	240	Single	50	As Specified	Simplex (1)		

SGS	PD	10/12/23	-	N/A
DR BY	CHK'D	DATE	ISSUE	SCALE

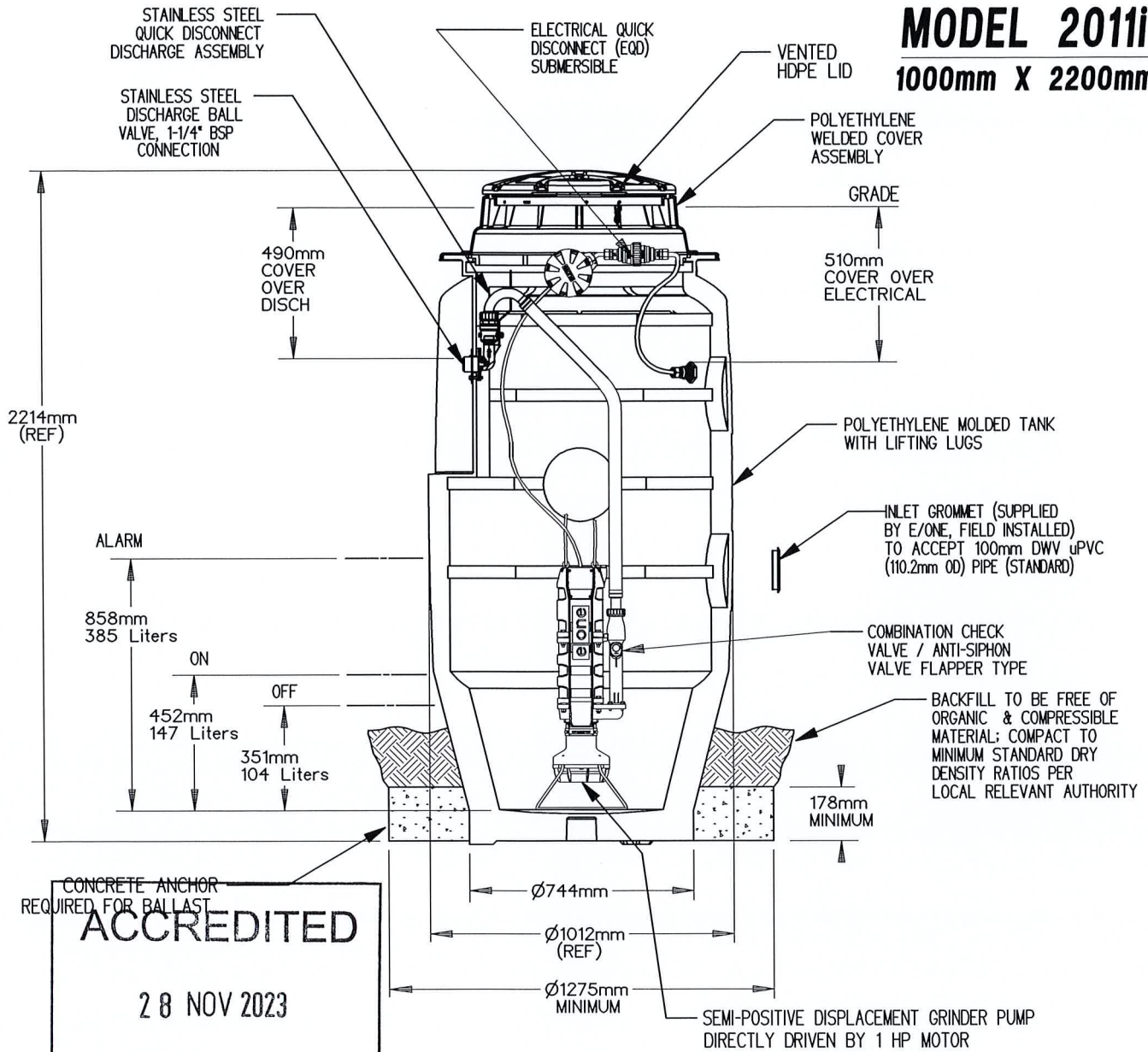


2010iW, DETAIL SHEET
 (800mm X 2700mm)

NA0837P01

MODEL 2011iW

1000mm X 2200mm




CONCRETE ANCHOR
REQUIRED FOR BALLAST

ACCREDITED

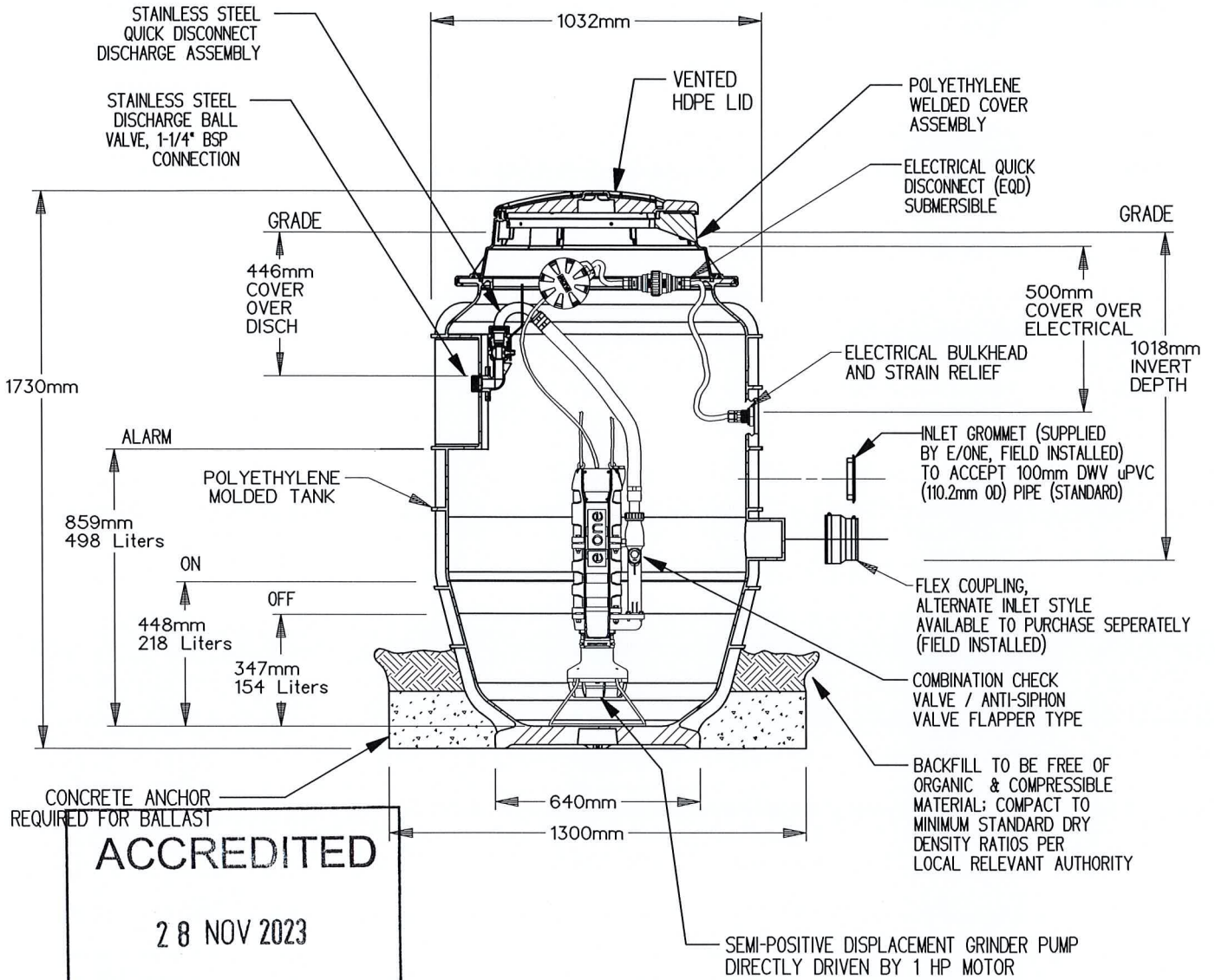
28 NOV 2023

NSW MINISTRY OF HEALTH

SPECIFICATIONS								2011iW - 1000 x 2200				
BASIN	Diameter (mm)	Height (mm)	Weight (kg)	Total Capacity (l)	Capacity Above Alarm (l)	Ballast (m ³)	Inlet Pipe Size (mm)	SGS	PD	10/12/23	B	N/A
	1000	2200	104	1005	620	SEE DWG	100	DR BY	CHK'D	DATE	ISSUE	SCALE
PUMP	Pump (s)	Dimensions (mm)	Weight (kg)	Nominal Pump Rate @ 0m TDH (lps)	Nominal Pump Rate @ 20m TDH (lps)	Nominal Pump Rate @ 56m TDH (lps)	Discharge Size (mm)					
	Simplex (1)	330 X 800	47	.75	.63	.40	32					
ELECTRICAL	Voltage (VAC)	Phase	Cycle (Hz)	Supply Cable (m)	Alarm Panel	MODEL 2011iW DETAIL SHEET (1000mm X 2200mm) NA0404P01						
	240	Single	50	As Specified	Simplex (1)							

MODEL 2013iW

1050mm X 1700mm
900 LITER



CONCRETE ANCHOR
REQUIRED FOR BALLAST

ACCREDITED

28 NOV 2023

NSW MINISTRY OF HEALTH

SPECIFICATIONS

2013iW - 1050 x 1700

BASIN	Diameter (mm)	Height (mm)	Weight (kg)	Total Capacity (l)	Capacity Above Alarm (l)	Ballast (m ³)	Inlet Pipe Size (mm)
	1032	1730	70	910	412	SEE DWG	100
PUMP	Pump (s)	Dimensions (mm)	Weight (kg)	Nominal Pump Rate @ 0m TDH (lps)	Nominal Pump Rate @ 20m TDH (lps)	Nominal Pump Rate @ 56m TDH (lps)	Discharge Size (mm)
	Simplex (1)	330 X 800	47	.75	.63	.40	32
ELECTRICAL	Voltage (VAC)	Phase	Cycle (Hz)	Supply Cable (m)	Alarm Panel		
	240	Single	50	As Specified	Simplex (1)		

SGS	PD	10/12/23	-	N/A
DR BY	CHK'D	DATE	ISSUE	SCALE

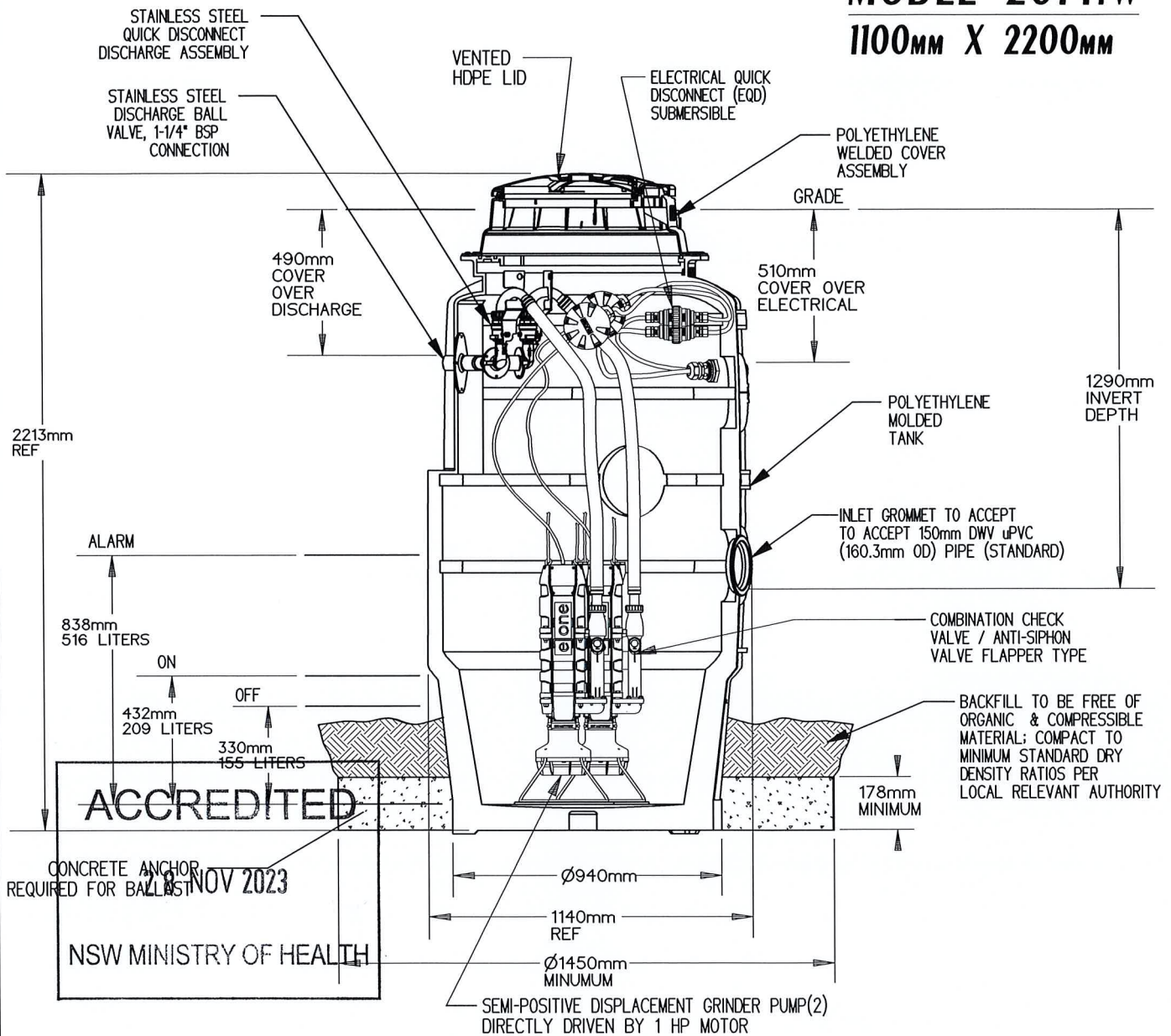


MODEL 2013iW DETAIL SHEET, 900L
(1050mm X 1700mm)

NA0634P01

MODEL 2014iW

1100MM X 2200MM



SPECIFICATIONS

2014iW - 1100 x 2200

SGS	P D	10/12/23	E	N/A
DR BY	CHK'D	DATE	ISSUE	SCALE

BASIN	Diameter (mm)	Height (mm)	Weight (kg)	Total Capacity (l)	Capacity Above Alarm (l)	Ballast (m ³)	Inlet Pipe Size (mm)
	1100	2200	132	1337	821	SEE DWG	150
PUMP	Pump (s)	Dimensions (mm)	Weight (kg)	Nominal Pump Rate @ 0m TDH (lps)	Nominal Pump Rate @ 20m TDH (lps)	Nominal Pump Rate @ 56m TDH (lps)	Discharge Size (mm)
	Duplex (2)	330 X 800	47	.75	.63	.40	32
ELECTRICAL	Voltage (VAC)	Phase	Cycle (Hz)	Supply Cable (m)	Alarm Panel		
	240	Single	50	As Specified	Simplex (1)		



MODEL 2014iW DETAIL SHEET
1100mm x 2200mm

PA2096P01