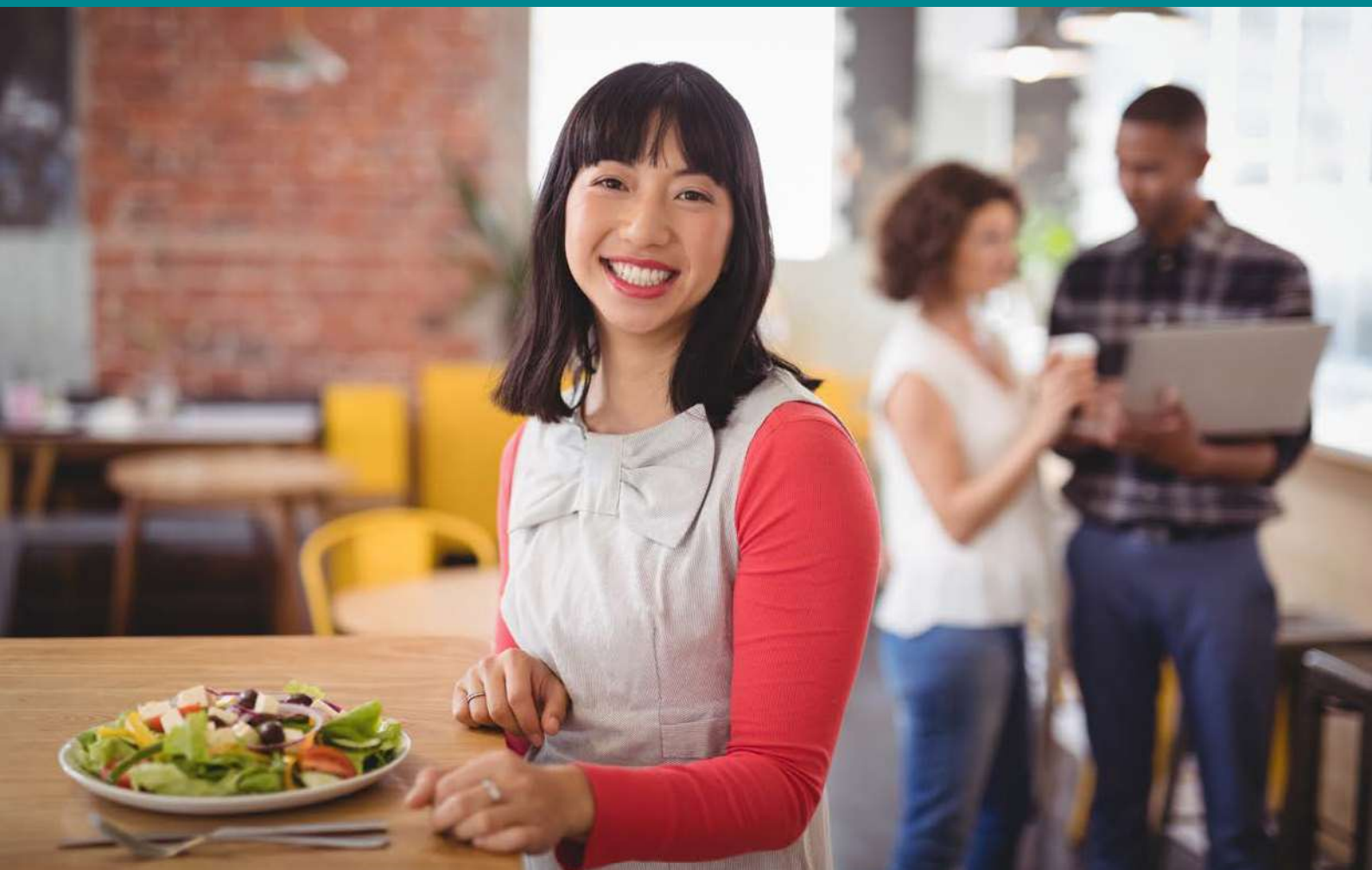


We're committed to giving you more healthy food and drink options.



**WE'RE MAKING  
THE HEALTHY CHOICE  
THE EASY CHOICE**

More information can be found at [www.health.nsw.gov.au/health](http://www.health.nsw.gov.au/health)  
Questions can be directed to [healthyfood@health.nsw.gov.au](mailto:healthyfood@health.nsw.gov.au)  
or call our helpline on 1800 930 966.

**MAKE  
HEALTHY  
NORMAL**

