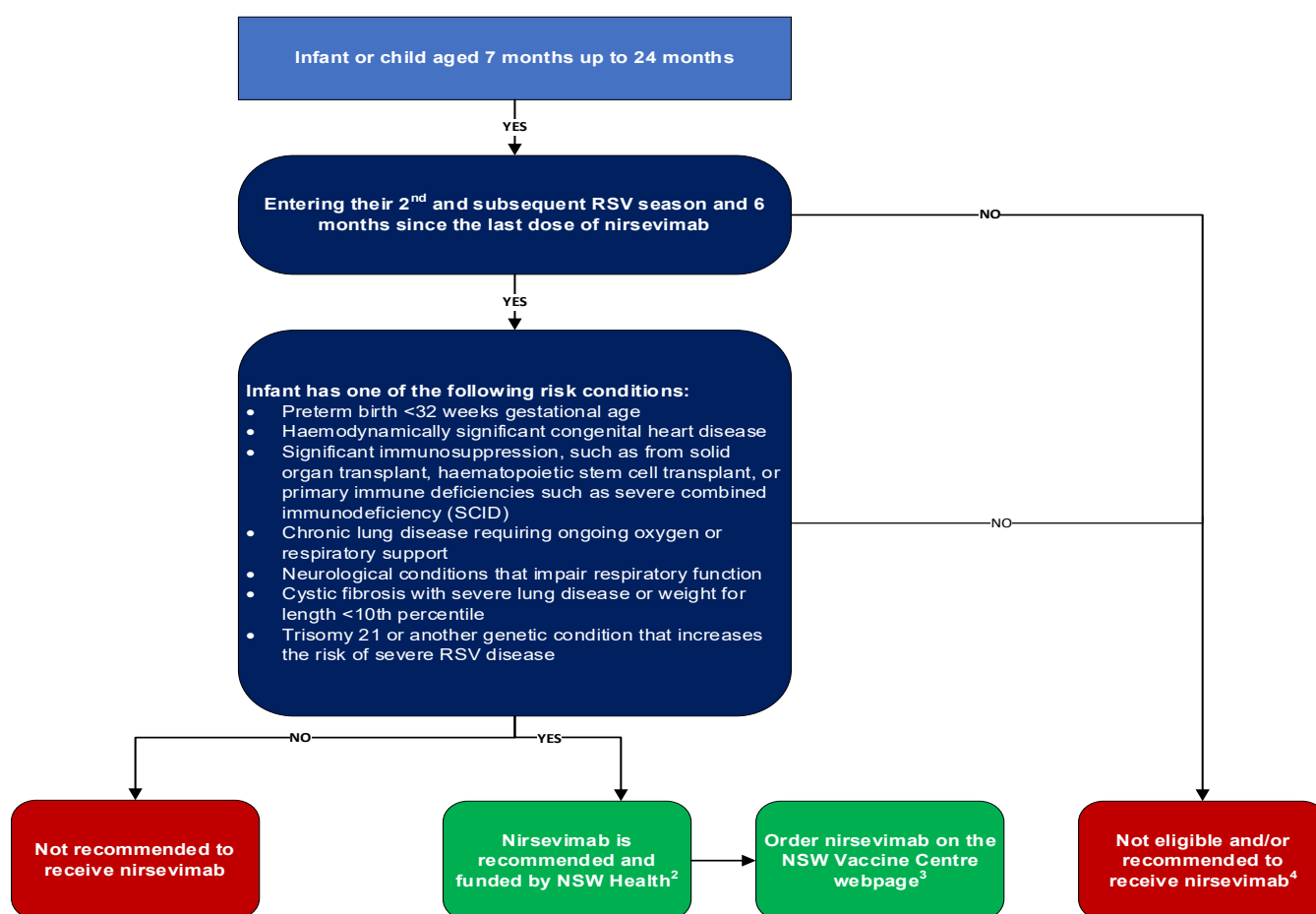


Clinical Decision Aid for nirsevimab (Beyfortus) in infants and children 7 months up to 24 months of age who remain at risk of severe RSV disease

NSW RSV Prevention Program

Decision aid to determine if an infant or child aged 7 months up to 24 months who remains at risk of severe RSV is eligible to receive nirsevimab

For infants up to 6 months of age, refer to the Clinical decision aid for nirsevimab (Beyfortus™) in newborn infants



¹Infants are not adequately protected if they are born within 2 weeks of the mother receiving Abrysvo during pregnancy.

²The dose of nirsevimab for infants weighing <5 kg, born during or entering their 1st RSV season, is 50 mg (0.5 mL) via intramuscular (IM) injection. The dose of nirsevimab for infants weighing ≥5 kg, born during or entering their 1st RSV season, is 100 mg (1 mL). The dose of nirsevimab for older children entering their 2nd or subsequent RSV season is 200 mg, given as 2 IM injections (2 × 1 mL of the 100 mg/mL formulation) at 2 different sites (preferably separate limbs, or separated by 2.5 cm) in the same visit. A minimum interval of 6 months is recommended between each season's dose of nirsevimab.

³ Eligible infants can receive nirsevimab at their general practice, Aboriginal medical service, or community health service. Primary care providers can order nirsevimab on the [NSW Vaccine Centre](#) webpage. Nirsevimab is funded by NSW Health and not available in the private market.

⁴ For infants up to 6 months of age refer to the [Clinical decision aid for nirsevimab \(Beyfortus™\) in newborn infants](#) at <https://www.health.nsw.gov.au/immunisation/pages/rsv-aid-infants.aspx>