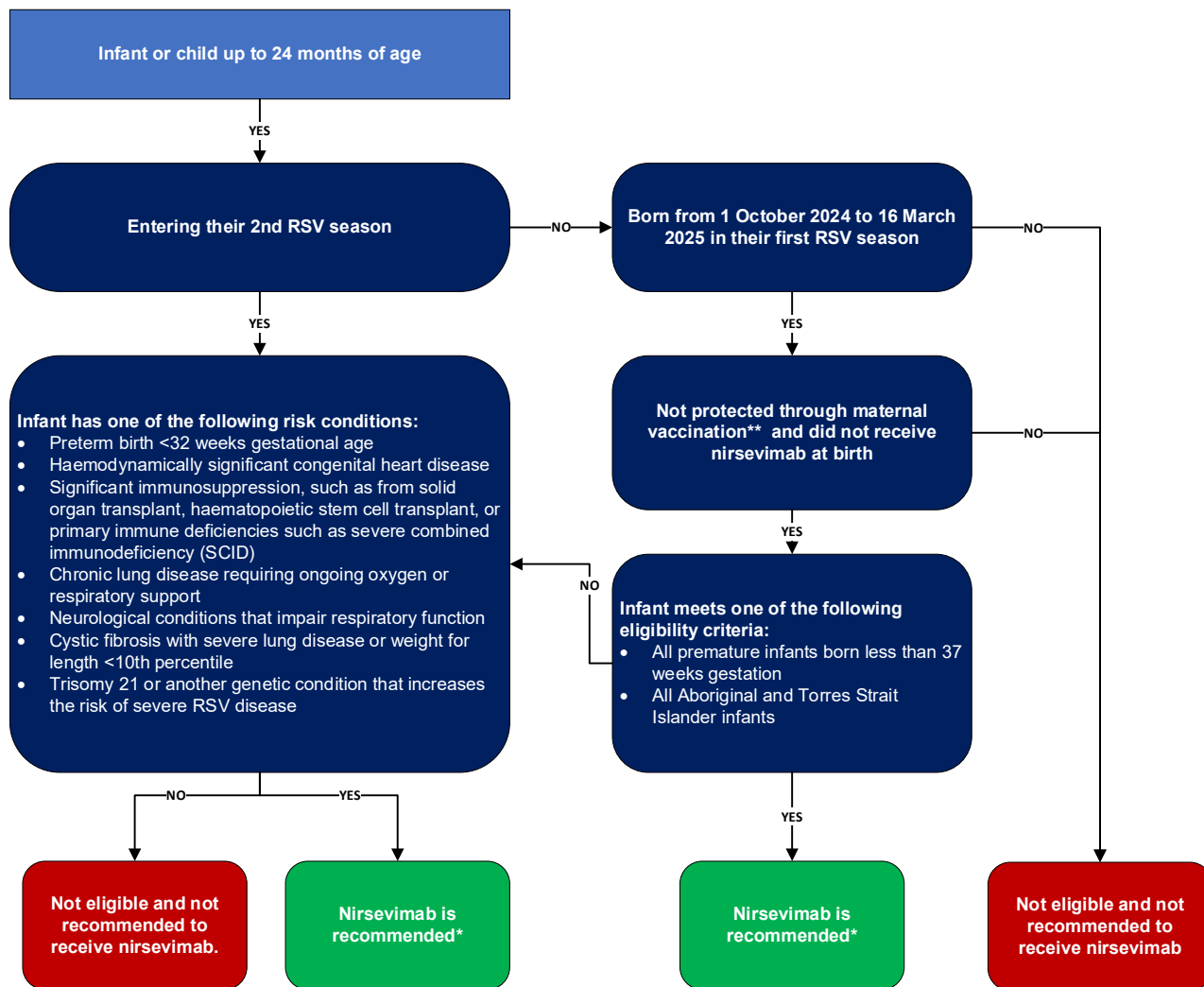


# Clinical Decision Aid for nirsevimab (Beyfortus) in infants and children up to 24 months of age who remain at risk of severe RSV disease

## NSW RSV Prevention Program

Decision aid to determine if an **infant or child up to 24 months of age** who remain at risk of severe RSV is eligible to receive nirsevimab



\* The dose of nirsevimab for infants weighing <5 kg, born during or entering their 1st RSV season, is 50 mg (0.5 mL) via intramuscular (IM) injection. The dose of nirsevimab for infants weighing ≥5 kg, born during or entering their 1st RSV season, is 100 mg (1 mL). The dose of nirsevimab for older children entering their 2nd RSV season is 200 mg, given as 2 IM injections (2 × 1 mL of the 100 mg/mL formulation) at 2 different sites (preferably separate limbs, or separated by 2.5 cm) in the same visit.  
 \*\* Infants are not adequately protected if they are born within 2 weeks of the mother receiving Abrysvo during pregnancy.

**Note:** Eligible infants can receive nirsevimab at their general practice, Aboriginal medical service, or community health service. Primary care providers must use the nirsevimab order form on the [NSW Vaccine Centre](https://www.health.nsw.gov.au/vaccines/abrysvo) webpage to order nirsevimab for each eligible individual.