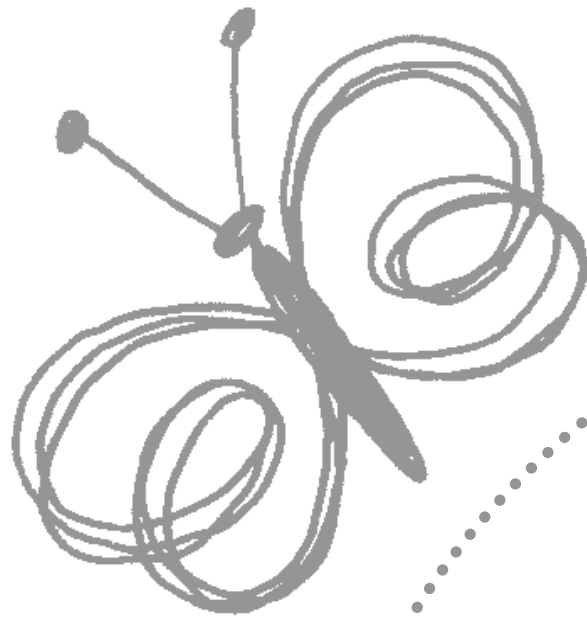




SWIS-H
STATEWIDE INFANT
SCREENING - HEARING

Hearing loss and your baby: the next step

An information resource for families in NSW



A NSW Statewide Infant Screening-Hearing (SWIS-H) Program initiative



Health

NSW Health
73 Miller Street
North Sydney NSW 2060
Tel. (02) 9391 9483
www.kidsfamilies.health.nsw.gov.au

This work is copyright. It may be reproduced in whole or in part for study training purposes subject to the inclusion of an acknowledgement of the source. It may not be reproduced for commercial usage or sale. Reproduction for purposes other than those indicated above requires written permission from the NSW Kids and Families.

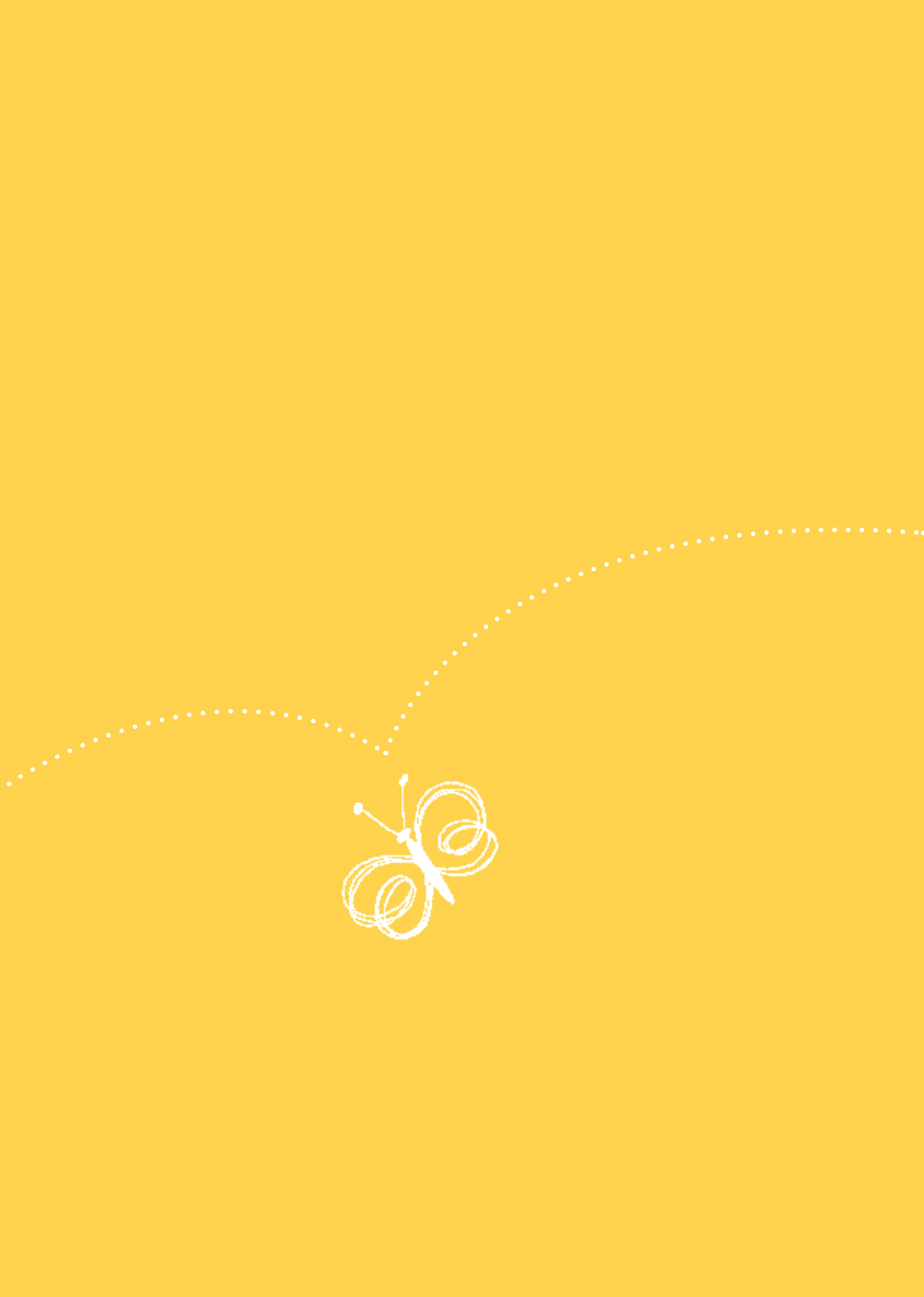
© NSW Health 2016
ISBN: 978 1 76000 186 5
SHPN: (NKF)150158

For further copies of this document please contact:
Better Health Centre – Publications Warehouse
Locked Mail Bag 5003
Gladesville NSW 2111
Tel. (02) 9887 5450
Fax. (02) 9887 5452
Further copies of this document can be downloaded from
the NSW Health website
www.health.nsw.gov.au/kids-families

September 2016

contents

- section 1 **How do I use this resource?**
- section 2 **Next steps for your baby**
- section 3 **Hearing and hearing loss**
- section 4 **Frequently asked questions**
- section 5 **Communicating with your baby**
- section 6 **Early intervention**
- section 7 **Support**
- section 8 **Building blocks**
- section 9 **Resources & additional information**



Introduction

Hearing loss and your baby: the next step. An information resource for families in NSW was developed as part of the Statewide Infant Screening – Hearing (SWIS-H) Program to assist parents with the challenges they face when they discover their baby has hearing loss.

The Statewide Infant Screening — Hearing (SWIS-H) Program

The NSW Statewide Infant Screening – Hearing (SWIS-H) Program is aimed at identifying all babies born in NSW with significant permanent bilateral hearing loss by 3 months of age, and for those children to be able to access appropriate intervention by 6 months of age. Identification is achieved through universal hearing screening of all newborns.

Technology is available to diagnose hearing problems in the neonatal period. Early identification and intervention are important, with research

suggesting that intervention commencing by 6 months of age may result in optimal speech and language development and minimise the need for ongoing special education.

Each Local Health District has a SWIS-H Coordinator/s responsible for implementing and managing the screening program across all facilities in their district. This model allows SWIS-H Coordinators flexibility to meet unique needs in their Local Health District. SWIS-H Coordinators have adopted innovative approaches to ensure maximum screening capture such as service agreements with private hospitals and employing dedicated screeners to meet local needs (eg. Indigenous and culturally and linguistically diverse populations).

The screening section of the program involves the screening of all newborns in NSW using Automated Auditory Brainstem Response (AABR) technology. If newborns do not pass hearing screening

they are referred for diagnostic audiological assessment. Parent/carer brochures describing the SWIS-H program are available in English and 25 other community languages, in both paper form and via the NSW Health website.

SWIS-H diagnostic audiology services are provided through the three tertiary paediatric hospitals which are the acute care hubs of the three paediatric services networks which cover the state. Newborns receive an audiological diagnosis, as well as medical assessments to assist with selecting appropriate intervention. The SWIS-H Travel Assistance Scheme was established to reimburse parents for the cost of travel where they live a considerable distance from a tertiary paediatric hospital.

Following diagnosis, newborns are referred to intervention services appropriate to the degree of hearing loss, specific medical diagnosis and parental preference.





Section 1: How do I use this resource?

What is this resource?

This resource provides basic information that will be helpful to you when your baby is first diagnosed with hearing loss. As time goes by, you will meet other professionals and parents of hearing impaired children that will add to your knowledge.

The aim of this resource is not to provide you with all the answers but to be a guide in these early stages.

When you go to your appointment with Australian Hearing, you will be provided with another resource called *Choices*. That resource will provide information on educational resources, hearing aids and communication options.

Resource Parts

The resource contains two parts:

- The main part of the resource contains information on hearing loss that you will need over the coming months.
- The smaller pages, in the plastic sleeve, are for you to insert into your infant's Personal Health Record.

Content

The main part of the resource is for you to keep at home and is filled with information on:

- Hearing and hearing loss
- The professionals that you may meet
- How you can communicate with your baby
- Where you can find further information
- Terms you may need to know

There are sections in this folder devoted to each of those topics. The information has been compiled from common questions parents ask after discovering that their child has a hearing loss.

Advice and support from other parents

This resource was developed in collaboration with parents whose children have a hearing loss. These parents will share their experiences and advice with you throughout this resource.

Section 8: Building blocks contains a parent to parent guide, written by parents of a

child with a hearing loss, for other parents.

A resource folder that you can keep, use and add to over time

This folder is a way of keeping all the information you have been given on your baby's hearing loss in one place and is intended to be a point of reference.

How do I use this resource?



Personal Health Record, “Blue Book”

The smaller pages, in the plastic sleeve, are for you to insert into your infant’s Personal Health Record, “My First Health Record”.

The Personal Health Record, “My First Health Record” contains information about all aspects of your child’s health and is a record of their development from birth to school age. It contains information on the health checks that are required at the different stages of their development.

The pages for you to insert into your infant’s Personal Health Record relate specifically to their diagnosed hearing loss.

The Personal Health Record is to be taken to every appointment that you attend with your child. This includes appointments with GPs, medical specialists and other health professionals.

The pages contain spaces for you to fill in.

- Information on diagnosis — this is to be filled in by your baby’s diagnosing audiologist. It has the specific information on the severity of hearing loss in each ear and recommendations.
- Professionals — this has spaces for you to fill in the names and contact information for your baby’s treating specialists.
- Planning calendar — this is a good way to visualise appointments your baby is scheduled to attend over the whole year.
- Schedule of appointment costs — this is a good way to keep track of the costs of medical and other services that relate to your baby’s hearing loss. Most audiological services are free of charge.
- Early intervention — this is a checklist to help you choose an early intervention service that is right for your baby.



Section 2: Next steps for your baby

Today's tests have confirmed that your baby has a significant hearing loss. You may be required to attend a number of appointments in the coming months with a number of different professionals.

Your Audiologist will tell you who they are and will make arrangements for you to see them if necessary.

Each professional will provide you with more information about your baby's hearing loss.

At times you may feel overwhelmed with information. This is a guide to explain who you may see in the next couple of months.

The next steps you need to take include recording all the information on your baby's diagnosis. This information can be recorded on the smaller pages which are designed to be included in your baby's Personal Health Record.

The pages are designed so you can clearly set out information on your baby's diagnosis and details of the various professionals who make up your baby's health care team. A yearly planning calendar for appointments, a schedule of appointments and costs and an early intervention service checklist are included.

Other Professionals you may be referred to

1. Australian Hearing

Australian Hearing provides comprehensive hearing services to children (up to the age of 26). *Australian Hearing* has a Paediatric Services Program which aims to support deaf and hearing-impaired children and their families to optimise each child's speech, education and communication development.

The services provided by *Australian Hearing* include:

- Monitoring of hearing for children referred with hearing loss
- Fitting and updating the latest technology devices

At Australian Hearing, you will be seen by experienced Paediatric Audiologists who will discuss your baby's hearing in detail and provide more information about early intervention services. Australian Hearing will continue to assess your baby's hearing over the coming years. You will be provided with a handbook called CHOICES, which will be given to you by your Audiologist at Australian Hearing.

Next steps for your baby



2. Paediatrician or General Practitioner

Many babies and children will be seen by their own Paediatrician or General Practitioner.

You can discuss your baby's hearing loss with your General Practitioner and they can refer you to a paediatrician or ENT surgeon for further investigation and management of the cause of the hearing loss and related issues if needed.

A paediatrician is a doctor that specialises in the health of children and are able to provide regular on-going checks of the baby's general health and developmental progress, including speech. They can also supply you with a letter of clearance for Australian Hearing saying that there are no medical concerns about fitting a hearing aid.

Both these doctors are able to discuss and arrange investigations into the cause of the hearing loss or refer you to a specialised clinic. Some tests (e.g. for infection) need to be done in the first month of life to be truly helpful, others (e.g. for genetic causes) can be done later.

3. The Hearing Support Group

The Hearing Support Service (Sydney Children's Hospital Network (Randwick)), John Hunter Hospital Audiology Department and the Deafness Centre (Sydney Children's Hospital Network (Westmead)) aim to provide families with easy access to the expertise that may be required in determining the possible cause of your baby's hearing loss.

For further information please contact the:

- Hearing Support Service (Sydney Children's Hospital Network (Randwick)) on (02) 9382 1297
 - John Hunter Hospital Audiology Department on (02) 4921 3548.
- or
- Deafness Centre (Sydney Children's Hospital Network (Westmead)) on (02) 9845 2139

4. Ear, Nose and Throat consultation

Any child with significant hearing loss should obtain an appointment with an Ear, Nose and Throat specialist.

The Ear, Nose and Throat specialist can also supply you with a letter of clearance for *Australian Hearing* saying that there are no medical concerns about fitting a hearing aid.

5. Social work

A Social Worker is available to provide counselling, advocacy and support on both an emotional and practical level.

A Social Worker can assist and support you and your family process some of the feelings that you may be experiencing at the moment, and can assist you in locating support and intervention services for your child. See Section 7: Support.



Questions for the Audiologist

How much hearing does my child have?

How does my child's hearing level relate to everyday hearing skills?

What do these terms mean: sensorineural, Conductive, mixed, mild, moderate, severe, profound, auditory neuropathy spectrum disorder?

Is the loss permanent? Do you need to do more testing?

How often should I have my baby's hearing re-tested?

Can you tell if the hearing loss will get worse or change?

Do both ears have the same loss?

How will the hearing loss affect my baby's speech and language development?

Does my baby need a bearing aid? Does my baby need hearing aids for both ears?

Will my baby need a hearing aid forever?

How much will the hearing aids cost?

What will my baby hear with the hearing aids?

Does my baby need to wear a hearing aid all the time?

How often will the hearing aids need to be replaced?

Will the hearing aids need new parts?

What should I do if my baby won't wear the hearing aids?

Is a cochlear implant an option for my baby?

Where else should I go to get help for my baby's hearing?

What other ways can I help my baby?

What do the hearing aids look like?

What does a cochlear implant look like?

What will happen if my child gets an ear infection?

Adapted from "Audiologist Questions",
Department of Health and Human Services,
Centre for Disease Control, USA pamphlet

Your baby's health care team



There are many professionals that may form part of your baby's health care team.

The Personal Health Record pages have a section to record contact information your baby's specialists.

Audiologists

Audiologists are health professionals who identify, assess and provide management for hearing, balance and related disorders to individuals of all ages. They provide counselling to both patients and their families. They manage and supervise programs and services related to auditory disorders. Audiologists are often part of a large team of specialists dealing with hearing or related disorders.

ENT specialists (Otolaryngologists)

Ear, Nose and Throat (ENT) specialists are doctors who are specially trained in disorders of the ear or nose or throat. They perform surgical operations when required and are able to advise and treat ongoing middle ear disease. Some ENT specialists also perform cochlear implants in children who are felt to benefit from this device.

Eye specialists (Ophthalmologists)

Ophthalmologists are doctors specialising in conditions or diseases of the eye. It is advised that all children with hearing impairment have an eye check performed by an Ophthalmologist. Occasionally, deafness is associated with eye problems.

Geneticists

Geneticists are doctors who are specially trained in advising about the nature and inheritance of certain conditions which may suddenly appear or keep recurring in families. Many types of deafness have a genetic background.

Paediatricians

Paediatricians are doctors who are specially trained in the management of childhood problems. Many babies have a check by a Paediatrician at birth. The Paediatrician will follow up any other problems which may be identified and help monitor the child's progress in all areas of development.

Social Workers

The SWIS-H Social Workers are concerned with the emotional and social well-being of families after the diagnosis of hearing loss in a new born baby. Social Workers can work with families to assess support needs, provide counselling, education, information and assistance in accessing services and resources.

Speech Pathologists

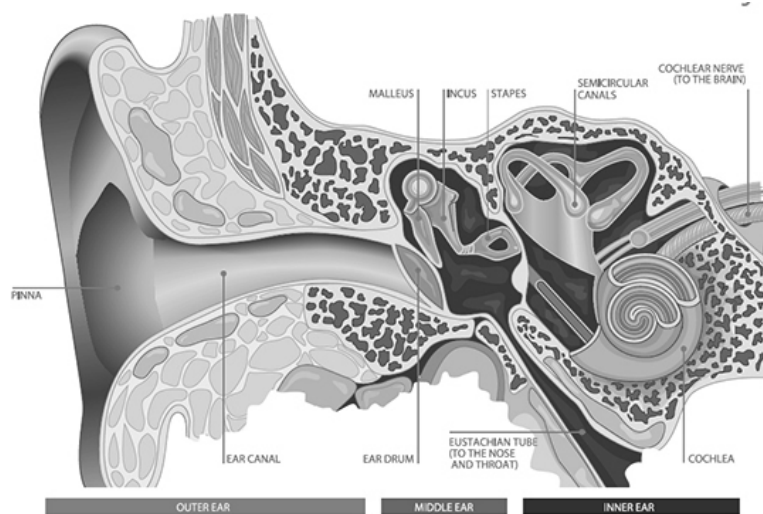
Speech Pathologists are trained in assessing all forms of communication in babies and older children. They can advise on whether the child's speech is progressing normally. The Speech Pathologist also manages programs for parents on how to improve their child's speech and language skills.

Teachers of the Deaf or hearing impaired

A Teacher of the Deaf is a teacher who has undergone normal teacher training and then received extra training in assisting babies and children with hearing loss. All of the various early intervention programs for deaf children have Teachers of the Deaf available to assist newly diagnosed babies and their families.

Section 3: Hearing and hearing loss

How the ear works



Australian Hearing www.hearing.com.au/how-we-hear/

Structure and function of the ear

Hearing is one of the human body's most complex systems.

The ear changes sound waves into electrical impulses through a series of chain reactions.

The brain then recognises these impulses as specific sounds.

The ear has 3 main parts.

Outer ear

The outer ear consists of the pinna (the part we can see), and the ear canal. Sounds travel through the ear canal and cause the eardrum to vibrate.

Middle ear

The middle ear includes the eardrum, three tiny bones called the ossicles, and the eustachian tube.

The function of the eustachian tube is to make certain that the air pressure inside the middle ear is the same as the air pressure on the outside of the eardrum.

When sound travels through the ear canal, it causes the eardrum to vibrate and from this vibration, the tiny bones (ossicles) also move. The last tiny bone, called the stapes then pushes on a membrane that leads into a

structure called the cochlea. The cochlea is found in the inner ear.

Inner ear

Where hearing is concerned, the most important parts of the inner ear are the cochlea and the cochlear nerve. The cochlea is a complicated structure that contains tiny hair cells and fluids. When sound occurs, the hair cells react and send nerve impulses to the brain via the cochlear nerve. Once the brain receives the message, we know we have heard something.

Types of hearing loss



The type of hearing loss your child has is dependant on which part of the ear is affected. There are three types: sensorineural loss, conductive loss, and mixed loss.

Sensorineural loss

A sensorineural hearing loss involves damage to or malfunction of the inner ear (cochlear or hearing nerve). This kind of hearing loss is usually permanent. It can be present at birth or may be acquired (e.g. from serious infections such as meningitis).

Some causes of congenital (from birth) hearing losses may be:

- genetic causes (also known as inherited causes)
- Structural defects of the inner ear

- Damage due to contact with certain viruses such as Cytomegalovirus (CMV) or Rubella
- Unknown

Conductive loss

A conductive hearing loss occurs, when there is a problem in the external or middle ear and sound is not able to reach the inner ear loudly enough.

Some examples of mostly temporary conductive hearing loss are:

- Blockage of the ear canal with wax
- Middle ear infections
- Perforated eardrums

Sometimes conductive loss can also be permanent. Some examples of these would be:

- Absence or malformed middle ear bones
- Absence or improperly formed ear canal (atresia, stenosis, microtia)

Mixed loss

It is possible to have a combination of both conductive and sensorineural hearing loss. This is called a mixed hearing loss.

Understanding hearing loss:

“I get frustrated that people do not know more about deafness – they do not understand that there are degrees of deafness, but it is really about education and my children are their best advert. People are amazed that they are ‘deaf.’”



Types of hearing loss

Auditory Neuropathy Spectrum Disorder (ANSD)

Another type of hearing loss is called auditory neuropathy spectrum disorder (ANSD).

ANSD is when sound reaches the cochlea normally but there is a problem with the transmission of the sound from the inner hair cells of the cochlea to the brain.

It has been estimated that it occurs in about 1 in 10 children with a significant hearing loss have ANSD.

The range of hearing loss is anywhere from normal to profound in people with ANSD. The hearing levels on the ABR testing are not a good predictor of how well the child can hear. The child may hear better or worse than the levels on the ABR. Behavioural hearing tests which are performed after six months of age can provide more accurate information about the child's level of hearing.

How does ANSD occur?

Some of the reasons ANSD may occur include:

- Damage to the inner hair cells of the cochlea
- A faulty connection between the inner hair cells and the nerve
- Poor development of or damage to the auditory nerve
- In a few cases, the auditory system may not yet have matured

Risk factors

This pattern of test results appears to occur in patients who have risk factors such as:

- premature birth
- asphyxia
- hyperbilirubinaemia
- Family history may be an underlying feature as well.
- Unknown

What are the effects of ANSD?

- Various levels of hearing loss
- Fluctuating hearing loss
- There may be difficulty understanding speech clearly

How can ANSD be managed?

The decision on management for

children diagnosed with ANSD is made by parents with the aid of your baby's health care team as would be the case for any hearing impaired child. Children with ANSD benefit from an individualised plan.

A choice of management options may be appropriate for a period of time with the choice in most cases 'to change options later if necessary. The following may be considered in your child's case:

- Hearing aids
- Cochlear implantation
- Early intervention programs (refer to Section 6)

We cannot predict the impact of an ANSD on the child at this early stage, but a series of test results and observations from parents and professionals will help in determining the best pathway for your child.

Types of hearing loss



Permanent unilateral hearing loss

What is unilateral hearing loss?

A unilateral hearing loss affects only one ear. It can range from very mild to total hearing loss on the affected side.

Causes of unilateral hearing loss

Some children are born with unilateral hearing loss (congenital). Sometimes the hearing loss occurs later on in life (acquired).

Some congenital causes may include hereditary factors or problems during pregnancy.

Some acquired causes may include hearing loss after illnesses such as mumps or meningitis.

For the majority of cases, the exact cause remains unknown.

It is important that children with unilateral hearing loss have a medical consultation as very occasionally it is related to other medical conditions.

What are the effects?

Children with unilateral hearing loss can have difficulty:

- Hearing in noisy surroundings
- Localising sound
- Hearing when sound is on the same side as the affected ear
- Some children can have some difficulty with speech development

It is important to note that many children have no problems with speech or academic achievement at all.

Unilateral hearing loss:

About the diagnostic process —

“The Audiologist seemed to want to play up the fact that he hears on one side, but we really only heard ‘he is deaf on one side’. We were devastated, and terrified about the future. This was our first experience of deafness and we didn’t know what to expect.”



Types of hearing loss

Audiological management

A decision about a hearing aid can be made in consultation with your Audiologist, and may have to be made over time.

Decisions made now can always be changed later.

When your child is entering group settings such as preschool or school, some other devices are often helpful, e.g. wireless technology (previously known as FM systems) and soundfield amplification systems.

Why is monitoring important?

A small number of unilateral hearing losses may develop into bilateral hearing losses. Consequently, regular monitoring of hearing thresholds is strongly recommended.

If your child has an ear infection, seek medical advice immediately. An infection in the better ear will have a greater impact on the hearing.

Parents are generally the best people to look for signs that may suggest your child may not be hearing so well. If you think there is a change in your child's response, have your child's hearing tested immediately.

Be aware of normal language milestones. It can be helpful to keep a diary of your child's language progress and compare to standard milestones.

If your child is not progressing, seek advice from appropriate professionals e.g. general practitioner, speech pathologist, paediatrician, audiologist

About strategies —

“Our son now attends a play group for hearing impaired toddlers and we've been to information seminars for parents. The more we talk to the Audiologists and Teachers, the more we're learning about the strategies that we'll use as he grows. We're learning to be advocates for him into the future.”

About explaining to people —

“Sometimes it's frustrating when other parents ask why he isn't aided and treat his unilateral hearing loss as 'no big deal'. Some professionals take the same approach. Sometimes my wife feels the need to defend our son when people say he's not deaf.”

Types of hearing loss



Severity of hearing loss

Degree of Loss

Potential Difficulties

Mild loss

- Difficulties hearing faint or distant speech
- Soft voices may be unclear
- Some difficulties in educational settings
- Some difficulties in noisy environments

Moderate loss

- Without amplification, more than 50% of speech will be missed.
- Development of speech and language will be affected

Moderately severe loss

- Conversation needs to be very loud to be heard.
- Development of speech and language will be impaired without amplification.

Severe loss

- Hears speech only if loud and close to the ear
- Speech development will be impacted.

Profound loss

- Children will rely on sight rather than sound.
- Aware of sound vibrations rather than sounds.
- Without amplification speech development will be severely impacted.

Unilateral loss

- May be at risk for speech and language delays.
- Difficulty hearing in background noise
- Difficulty localising sounds
- Difficulty hearing when sound is on same side as affected ear.



Section 4: Frequently asked questions

Why was the hearing loss diagnosed so early?

Newborn hearing screening programs, like SWIS-H, were put in place to identify babies with hearing loss as soon as possible after birth. Hearing screening at an early age is strongly supported by parents of children with hearing loss. While it can be upsetting and difficult in the beginning, parents recognise that early detection results in better outcomes for their child.

What is the advantage of having an early diagnosis?

An early diagnosis provides your baby with the opportunity of access to language and communication at the most important time for language development. Research shows that babies whose hearing loss is diagnosed early and who receive appropriate intervention will have improved speech and language outcomes. Communication and language, either spoken language or sign language, is important for learning as well as social and emotional well-being.

How does the Audiologist know for sure my baby has a hearing loss, he or she's so little?

The tests done with your baby to diagnose his or her hearing loss are highly reliable and objective. Your baby's ear, nerve and brain responses to sound are recorded on a computer. The Audiologist is trained to interpret the readings and diagnose hearing problems.

Will my baby grow out of it?

A baby's hearing can change as they grow older, but it is extremely uncommon for a child's hearing to improve as they grow. Devices such as hearing aids or cochlear implants can assist your baby to make the most of his or her hearing.

“To those parents who have just found out their baby is a 'SWIS-H' baby, I would advise you read as much information as possible at first. This was very confusing for us initially, but slowly you learn where you stand. We then used our own parental instinct (you can never be wrong with that). There is an abundance of help out there and we found everyone we spoke to be very helpful and kind. So be strong and stand up for what you believe.”

Frequently asked questions



Can it get worse? How will I know if it gets worse?

Some hearing losses can get worse over time. Your baby's hearing may temporarily get worse when an ear infection is present. Your professional team will closely monitor your baby's hearing. If you are concerned because your baby is not responding to sounds, you should discuss this with your Audiologist.

Can my baby hear any sounds?

The number of sounds your baby can hear depends on the type and severity of the hearing loss your child has. Most children with hearing loss are able to hear some sounds.

How will my baby be able to communicate?

Early diagnosis and intervention has given your baby the best chance of developing good communication skills. We all use various methods of communicating — speech, writing, gesture, hand movements and body language. Your baby will be no different. He or she may learn to communicate by speaking, or by using sign language, or a combination of both. You don't need to rush to make a decision about what is the best method of communication for your baby — for many families, it is a decision made over time as they get to know their baby and the needs of the family. Communicating with your baby is important, not how you do it.

Will my baby learn to talk?

Most children with hearing loss can learn to talk. How well they are able to communicate using speech depends on many factors, for example, how severe their hearing loss is, how much help they receive from hearing assistance and how much intervention they receive to assist them to speak.

Will we need to learn sign language?

Your baby may learn to communicate best using speech, or they may learn best by using sign language (or maybe even through a combination of both). If your child uses sign language you will need to learn signing to be able to communicate well with your child.

Many families find sign language convenient in situations where their child cannot wear a hearing aid or cochlear implant such as in the bath or at the beach. A number of organisations offer courses in Auslan (Australian Sign Language). Contact the Deaf Society of NSW for information about courses in your area.

“We are advocates for our kids hearing whilst they are growing – and information is the key to supporting them well. I am learning that the more info I have, the better armed I am to be the best Mum I can be for them.”



Hearing loss and your baby: the next step

Frequently asked questions

Can I get a second opinion?

As always, you are free to seek a second opinion about your baby's hearing. Your GP or Early Childhood Health Clinic can advise about how to access a second opinion. The tests conducted in the first assessment are highly accurate, and you should be prepared that the results of the second opinion will more than likely match the first test results.

There are a number of other areas on which you may want to seek a range of advice, such as the best early intervention service for you and your baby. The more you know about your options, the more confident you will feel in managing your baby's hearing loss.

What caused my baby's hearing loss?

There are many different causes for a baby's hearing loss. The hearing loss may be due to genetics, an illness your baby has had, or how the structures of the inner ear formed before the baby was born. Often there is no apparent cause for a baby's hearing problem. Your Paediatrician will be able to provide further information about the cause of your baby's hearing loss.

What other tests can be done?

If you would like more information about the cause of your baby's hearing loss, your Paediatrician can recommend various tests which may help to indicate the cause of the hearing loss. Sometimes, it is also recommended that other members of the family have their hearing tested.

Will the doctor find that anything else is wrong?

In some babies, hearing loss can be linked with other problems eg. cleft palate, heart problems and some syndromes, but most often parents are already aware of these problems before the hearing loss is diagnosed. Your Paediatrician will discuss all the areas of your baby's health and development with you on your visit.

If I have another baby, could he or she have a hearing loss?

If the cause of your baby's hearing loss is genetic, there is a greater chance of having another child with a hearing loss. You should ask for genetic counselling if you are concerned.

What is the difference between hearing impaired and deaf?

Hearing impaired and deaf, along with other words such as hard of hearing and hearing loss, are all used to describe people who have difficulty being able to hear a range of sounds clearly.

In general, people who are hearing impaired or hard of hearing mainly use their hearing (with the assistance of amplification such as hearing aids or cochlear implants) to communicate. People who are deaf mainly rely on their vision to communicate, for example, lip-reading or sign language.

Will my baby have to wear hearing aids forever?

Hearing aids will help your baby to make the most of his or her hearing. The Audiologist at *Australian Hearing* will discuss this further with you.

Frequently asked questions



Will a cochlear implant help?

Cochlear implants are most helpful for children who have severe to profound levels of hearing loss and receive little benefit from hearing aids. Cochlear implants are not suitable for all types of hearing loss and involve complex surgery and ongoing therapy. Your audiologist, paediatrician or ENT specialist will discuss with you whether a cochlear implant may benefit your baby, and refer you to a cochlear implant centre, if necessary.

Will my child need to go to a special school?

Most children with hearing loss attend mainstream schools. Some children need extra help in the classroom, and some need to be involved in classes designed to help children with hearing losses. Getting the right help to ensure your child learns well is the most important consideration.

As a parent of a hearing impaired child, will I be able to return to work or study?

While he or she is young your child will need extra help to learn to use their hearing and learn to communicate. This will involve regular appointments with and visits from many professionals. You will also need to do activities at home with your child to help them to learn. Because of the time these activities will take, you may need to reconsider the priorities for your family. Some parents postpone their return to work while others find returning to work manageable.

Can I get financial help for travel costs?

Please refer to Section 7.

What other assistance is available?

Please refer to Section 7.

“Research and learn as much as you can about the subject in question. Do this by talking to professionals, by reading literature on the subject, but most importantly, network with other parents. And remember, there is no right way for everyone – you just have to watch and look for signs that a certain method is not working and be prepared to be flexible!”



Section 5 : Communicating with your baby

Communication

Your baby's hearing loss has been identified early which is best for the development of good communication skills. Your baby may learn to communicate in a number of different ways through speaking, sign language or a mixture of both.

The decision does not need to be made now. There is no 'prescription' — the best communication method will depend on your baby's individual needs and what works for your family.

Tips for parents

Effective communication begins at birth through...

- Sound and gesture
- Facial expressions
- Cuddling and holding your baby
- Hugging
- Touching and playing games
- Making funny faces
- Gazing into your baby's eyes

How do babies communicate?

- Smiles — 'I'm happy'; 'Let's play'
- Crying — 'I'm hungry, wet, in pain'
- Cooing — 'I feel good'.
- Squealing — 'Do it again!'
- Vocalising
- Pointing & reaching — 'I want that'

Bring the child's focus to your face

- Talking encourages your baby to look at your face. This will help him or her as he or she learns to read lips and/or speak. If you decide to use sign language, it is still very important for your child to look at your face.
- Look into your baby's face from about 20 to 25cm away — the best distance for babies to focus.

Get baby's attention before you talk

- Encourage your baby to focus on your face — move a toy near to your baby's face, then move it to your face so he or she looks at you when you talk.
- Tap on the toy several times before you say something about it.
- Touch your baby's arm or foot to get him or her to look at you, then start your conversation.

Changing the environment

- Minimise the distance between you and your baby when talking to him or her. Come even closer in a noisy environment.
- Move away from or reduce background noise when you want your child to listen to you.
- Position your baby so that you are often within sight.
- Ensure there is good lighting in the room.

Communicating with your baby



Recognise signals

- Recognise your baby's signals and ask "What is my baby trying to say with his or her eyes, face, body or voice?"
- Take the signals your baby provides — facial expressions, eye contact, cooing and babbling or movement — and react to them with appropriate words, gestures, expressions or signs.
- Encourage your baby to communicate more by repeating and adding to what they say.

Imitate

- Imitate the sounds and gestures your baby makes and wait for him or her to repeat them.
- Model actions and words e.g. waving goodbye.
- Let your face reflect what your child is showing.

Playing with sound and language

- Make language one of your favourite activities and use it at every opportunity.
- When you notice an interesting sound, turn your head to the left or right to help locate it — "Where is that sound coming from?".
- Play games such as 'Blind Man's Bluff' and 'Peek-a Boo'.
- Play with 'noisy toys' and games.

Communication

- Get into good listening habits when your baby is young
- Communication is made up of many things: speech, gesture, facial expressions, touching and sign to name a few.
- Every person uses a combination of these methods to communicate.
- Use as many of these strategies with your baby from the start so as to increase your baby's communication and language learning.



Communicating with your baby

Special tips for unilateral babies — what strategies can I use to help my child?

Changes to the physical environment

- Position your baby so that the better hearing ear is directed to the sound you want them to hear.
- Place furniture such as cots and high chairs away from background noise and in a position to take advantage of the better hearing ear.
- Place the baby's car seat on the opposite side of the car to the better hearing ear.
- Ensure that your baby is seated so more interesting sounds are presented to the better hearing ear.
- Be sure there is good lighting in the room.
- Once your child is at school, preferential seating in the classroom, to take advantage of the better hearing ear, is recommended.

Communication strategies

- Minimise the distance between you and your baby when talking to him/her. Come even closer in a noisy environment.
- Move away from or reduce background noise when you want your child to listen to you.

- Position your baby with the better hearing ear towards you for conversation, or away from you to listen to other sounds.
- Show your baby where sound comes from.
- Gain your baby's attention then speak.
- Provide visual cues or gestures when you speak or make a sound; let your baby see your lips.
- Tell your child what room you are in when you call them.
- When you notice an interesting sound, turn your head to the left or right to help locate it – "Where is that sound coming from?" "What can be done?"

What can be done at home

- Keep the level of background noise to a minimum, if possible, when your baby is in a listening situation.
- Make sure that your baby can see you when you are speaking.
- Tell your child what room you are in when you call them.

- As your child may have difficulty in determining where a sound is coming from, teach your child to be very aware in situations such as crossing a road.
- Protect the better hearing ear from loud sounds such as power tools or personal headphones.
- Have your child's hearing assessed regularly to ensure that the normal ear is hearing at adequate levels. Your Audiologist will tell you how often this should occur.
- If your child gets an ear infection, you may notice that their hearing is much worse. It is important that you see your doctor as soon as possible.
- Ensure that your child is vaccinated on time for measles, mumps and rubella.
- See Section 7: Support for parent support groups.

Communicating with your baby



Hearing aids

What can be done at pre-school and school

- Inform the teacher that your child has a hearing loss in one ear.
- Your child should be seated close to the teacher or where they can hear the best.
- The better hearing ear should be closest to the teacher.
- Your child should be seated away from background noise such as fans or air conditioners.
- In some circumstances, a FM (radio transmitted sound) or hearing aid may be beneficial. You could ask your Audiologist about these.

Your baby will get the most benefit from hearing aids when they are worn regularly.

Hearing aids should not be uncomfortable or painful for your baby if they are fitted correctly.

Each hearing aid is attached to an ear mould that is the exact size and shape of your baby's ears. The Audiologist at *Australian Hearing* will take regular impressions of your baby's ears so the ear moulds fit snugly as your baby grows.



Advocacy — how to help your child

Advocating for your child means promoting his or her welfare and interests.

Parents want the best for their children. We want to provide them with the best opportunities we can so they grow up to be happy, independent adults. Parents are responsible for the child's welfare and have their child's best interest at heart — they are natural advocates for their children.

As your baby grows, you will find there are situations where you require advocacy skills. The tips below may start you along the advocacy path:

- 1.** You are the key member of your baby's support team and should work with the health care professionals involved with your baby. Successful advocacy will depend on working with others in your baby's team.
- 2.** Be educated and informed about hearing loss and its effects on your baby. Read and talk to professionals and other parents to develop a good understanding about your baby's needs.

- 3.** Become familiar with the terminology, jargon, rules and processes of the various services providing your baby with assistance.
- 4.** Be confident about your abilities and rights.
- 5.** Effective communication is one of the keys to success — use the knowledge and skills you already have.
- 6.** Train yourself to write things down. Keep copies of all letters and reports and notes on phone calls.

It may seem overwhelming at present to consider that you must become an expert in your baby's needs and the system designed to offer your family the assistance and support you need. However, involved and informed parents are the most effective advocates for their children and you will never regret the time spent ensuring your baby's needs are met.

“For us it is a team thing, although we both take different roles depending on the situation. I know more about the day to day aspects of supporting our kids, but ... is there for them actively in all they do — we are both very committed to making sure that there are no barriers for these kids in their learning and their lives, so we model that — we have accepted that they have a hearing loss, so have they. We are just trying to bring up kids who are happy and healthy and who are outward looking — not victims.”

Your family



Brothers and sisters

Having a new baby in the family can be tough for brothers and sisters at the best of times. When a baby is diagnosed with a hearing loss, it affects everyone in the family including the brothers and sisters. There are things you can do to make the situation easier for your older children.

- Tell the older children about hearing loss in age-appropriate language. Knowing the facts reduces their uncertainty and puts their fears into perspective.
- Try to be a good listener and allow them to express their feelings.
- Set aside some special time for each child through the day. Ask for help from family and friends so that you can spend time with your other children. Ten minutes of uninterrupted time with mum or dad can make a difference to how valued and loved they feel.
- Remind family and friends to pay attention to the other children.
- Take the time to enjoy all of your children — they all have needs and want to feel special and loved.

A message to grandparents

We know it is a difficult time for grandparents when a baby is diagnosed with a hearing loss. You experience feelings of sadness for your grandchild, your own child and yourself. We also know that the emotional support grandparents provide to their son or daughter is important for their psychological adjustment and in reducing their stress. The parents of a baby with a hearing loss appear to be most appreciative of the support offered by their own parents.

There are a number of practical ideas to assist your son or daughter's family. The kind of attention we most want to shower on babies — touching, holding, comforting, rocking, singing and talking — are precisely what your grandchild needs now.

Some families may really appreciate practical help with cleaning, washing and ironing or shopping. Allow the parents to guide you — avoid taking control.

Babysitting your new grandchild or his or her siblings can allow the parents some time-out to relax and enjoy themselves. An hour's break can recharge the batteries and bring some perspective back into their lives.

Don't be afraid of the technology. Learn how to put in the hearing aids and how to test them, change the battery and so on. They can be fiddly but with a little practice you will soon be an expert.

Accept your grandchild for the child they are. Recognise their achievements and simply enjoy them.

Things that won't help:

Don't tell them not to worry — "He is so young; he will grow out of it; give it some time" because this is not the case. With early fitting of hearing aids, early intervention and a loving and supportive family, your grandchild has the best possible start.

Avoid 'blaming' one side of the family or a family member for the hearing loss — it is unhelpful and upsetting. Even families with a history of hearing loss, may be shocked and upset when the littlest family member is diagnosed with a hearing loss.

Try and avoid criticising or offering opinions. Parents who receive support and good information from professionals and other quality sources usually make the right choices for their family (even if they are different to yours).



Section 6: Early intervention

What is early childhood intervention?

Early childhood intervention is a system of coordinated services that promotes a child's growth and development and supports families during the critical early years, from birth to school entry. This includes discussions with professionals that are involved with your baby such as the SWIS-H social worker, paediatrician, audiologist or ENT specialist.

Early childhood intervention should be a multidisciplinary approach. Early intervention programs for children with hearing loss usually focus on language development but also consider the intellectual, social, emotional and physical growth/needs of the child and his/her family.

Parents should be involved in the process from the beginning. You

should be a core member of your child's support team. The team is usually coordinated by the parent/caregivers and can include Paediatricians, Audiologists, Teachers of the Deaf, other Doctors, Speech Pathologists, Social Workers, Counsellors and Educational Psychologists. Other personnel may include Physiotherapists, Occupational Therapists and others, depending on the needs of the child and family.

Why does my baby need early intervention?

Research has shown that intervention before 6 months of age maximises your baby's potential for speech and language development and minimises developmental delays, regardless of the mode of communication you choose.

Early identification of your baby's hearing loss allows you time to consider your choices carefully. You don't need to rush, however, it is not a good idea to take months.

How will I decide which early intervention service is best for my baby?

You will receive a copy of *CHOICES* on your first visit to *Australian Hearing*. *CHOICES* is a good place to start looking for information about the services that are available to you. It provides information on all aspects of your journey with a child with hearing loss including an overview of each early intervention service and how to contact them. Seek out all the information you can find on early intervention services in your area. Visit more than one program and sit in on a session. Seek out other parents who have gone through the same process. It may also help to talk to deaf and hearing-impaired adults to get feedback on the choices their parents made for them. Don't listen to just one person. Be open to advice, but also trust your own instinct and judgment.

Early intervention



Choose a service that you feel is right for your family, you may choose more than one service; these may not necessarily be the most convenient. There is no right or wrong choice and no decision is permanent.

How do I contact other parents and/or deaf adults?

There are several ways:

- Parent Support Groups — details of these are provided later in this resource
- Deaf Society of NSW — particularly if you would like to meet some Deaf or hearing impaired adults

The SWIS-H Social Worker can also put you in touch with other parents.

Early intervention checklist

The early intervention checklist to be inserted in your baby's Personal Health Record shows you the questions to ask when considering what type of early intervention service you want your baby to go to. It is important to find one that is right for you and your baby's needs. Please remember that there is no right or wrong answer and you can change decision at any time.

“Family and friends are just amazing. Early intervention feels like you are part of a community. Support groups have been great. If you don't agree with what someone says, you don't have to throw the baby out with the bathwater. Take what is good from these sources, it doesn't always have to be about 'hearing loss support' I think the best support can be what makes you feel good as a person, then you can be the best parent for your child. My mum and dad are just great at doing things like folding washing, helping me make my garden look nice, cooking me a yummy soup. It has nothing to do with ...'s hearing loss, but when I'm exhausted from so many appointments, I really do appreciate it all the more.”



Section 7: Support

SWIS-H Social Workers

SWIS-H Social workers are concerned with the emotional and social well being of families after the diagnosis of hearing loss in a newborn baby. They offer a child focused, family centred approach.

The Social Worker is a member of the SWIS-H team and the Audiologist who diagnosed your baby's hearing loss can refer you to the SWIS-H Social Worker. You may meet with the Social Worker at the time of diagnosis or you can contact the Social Worker later on.

There is a SWIS-H Social worker at the Children's Hospital at Westmead, at Sydney Children's Hospital at Randwick, and at John Hunter Hospital, Newcastle. The Social Worker can also be contacted through the Social Work Department at each of these hospitals.

The Social Worker can help with a range of issues including:

- Coping with your child's hearing loss – feelings about the diagnosis can be overwhelming and it can be helpful to discuss this from someone outside your family.
- Accessing services and resources within the hospital and community – if you need additional assistance, the Social Worker can help you find out about services and resources that are appropriate for your family. This may include family support services, housing or other practical resources, or referral to other services relevant to you or your children.
- Family and relationship concerns – diagnosis of a hearing loss will affect every member of the family.
- Parenting difficulties
- Coping with changes and grief

Services include:

- Assessing the support needs of families
- Counseling with parents and families
- Education and support groups
- Information and assistance in accessing services and resources
- Linking into financial supports such as Carers Allowance/ payment, Better Start and National Disability Insurance Scheme (NDIS)

The Social worker can see you at the hospital or in some circumstances may be able to visit you at home.

Support



Benefits

Travel assistance

Transport for Health — subsidised travel schemes for parents who are disadvantaged by distance and isolation and need financial assistance to use transport services to access specialist medical services not available to them locally.

Transport for Health subsidised travel schemes currently funded by NSW Health include the Statewide Infant Screening-Hearing (SWIS-H) Travel and the Isolated Patients Travel and Accommodation Assistance Scheme (IPTAAS). The scheme provides assistance by subsidising the cost of patient transport to medical specialists, dental surgeons and Audiologists (for all babies screened under the Statewide Infant Screening-Hearing (SWIS-H) program).

SWIS-H Travel Assistance Scheme

SWIS-H travel is available to families that need to travel more than 100km (one way) from home to one of the diagnostic centres, for diagnostic auditory assessment. These centres are at:

- The Children's Hospital, Westmead
- Sydney Children's Hospital, Randwick
- John Hunter Hospital, Newcastle

Your SWIS-H Coordinator will assist you with accessing SWIS-H travel.

The Isolated Patients Travel & Accommodation Assistance Scheme (IPTAAS)

IPTAAS is designed to provide assistance to people who live in isolated and remote communities to access specialist medical treatment. Families that live more than 100km (one way) from the nearest treating specialist are eligible to apply.

It is important to note that IPTAAS does not provide full reimbursement and that a personal contribution is deducted from the total benefits paid for each claim. IPTAAS will not reimburse for other living expenses such as food. It is important that you hold on to your receipts to receive reimbursement. More information about IPTAAS can be found on the website:

<http://www.enable.health.nsw.gov.au/iptaas>

Carer's Allowance

You may be eligible for Carers Allowance to help with extra costs that you may occur having a child with hearing loss. Your eligibility will depend on your child's level of hearing. Your hospital Social Worker can provide information on how to apply. You will be required to contact Centrelink on 132717 for more information and to obtain a form which you will need to complete.

Better Start

Better Start is a funding program for families who have children with disabilities. Children under 6 years of age with Permanent hearing loss of 40dBHL or

greater in the better ear, and Auditory Neuropathy Spectrum Disorder (ANSD) are eligible for funding through Better Start. Your Audiologist, Paediatrician or other hearing service professional can tell you if your child is eligible.

The Better Start Program entitles you to access up to \$12,000 in services. You can spend \$6,000 in any one year. Information about Better Start can be found on the following website:

<http://www.betterstart.net.au/>

These services can be provided by professionals who are registered with Better Start.

National Disability Insurance Scheme (NDIS)

The Hearing Services Program through the NDIS provides services to a range of people with mild to profound hearing loss, including children and young adults, some Indigenous Australians and aged and disability pensioners. The program has two components:

- Community Service Obligations
- Voucher Program.

The program is managed by the Office of Hearing Services. For more information about the program visit the

<http://hearingservices.gov.au>

Financial stress

If you are experiencing significant financial difficulties, please contact your SWIS-H Coordinator or Social Worker who may be able to assist you and provide financial assistance prior to attending your child's diagnostic audiology appointment.



Parent and other groups

Aussie Deaf Kids

www.aussiedeafkids.org.au

Aussie Deaf Kids provides online support and information for parents raising a child with hearing loss living in Australia.

ACT Deafness Resource Centre

www.actdrc.org.au

The ACT Deafness Resource Centre provides information, referral and advocacy services for the hearing impaired, Deaf and those with chronic disorders of the ear in the ACT community.

Canberra Deaf Children's Association

www.canberradeafkids.org.au

The Canberra Deaf Children's Association (CDCA) endeavours to provide support and information to parents and families on issues affecting deaf and hearing-impaired children.

Deaf Australia

www.deafau.org.au

Deaf Australia is the national peak organisation for Deaf people in Australia. It represents the views of Deaf people who use Auslan (Australian Sign Language).

Deafness Forum of Australia

Tel: (02) 6262 7808

www.deafnessforum.org.au/

The Deafness Forum of Australia is the peak national body representing all interests and viewpoints of the Deaf and hearing impaired communities, including those people who have a chronic ear or balance disorder, and their families.

Deaf Society of NSW

Tel: 1300 555 727

www.deafsocietynsw.org.au

The Deaf Society of NSW provides services to and for the deaf community to ensure deaf people achieve their full potential. The Deaf Society runs a parent-to-parent mentoring program in collaboration with Parents of Deaf Children.

The Deaf Society NSW has offices in Parramatta, Newcastle, Central Coast, Coffs Coast, Lismore and Warrawong.

Dubbo & District Deaf Club

Tel: (02) 6884 6714

<http://www.hearourheart.org/dubbo--district-deaf-club.html>

Dubbo & District Parent Support Group for the Deaf/Hearing Impaired Inc provides access to medical and educational assistance to those affected by hearing difficulties.

Parents of Deaf Children

Tel: (02) 9871 3049

Fax: (02) 9871 3193

www.podc.org.au

Parents of Deaf Children (PODC), formerly Parent Council for Deaf Education, is a non-profit organisation, supporting families with babies, children and teenagers with hearing loss in NSW. The organisation offers a range of information, support and advocacy services for parents and carers.

Internet resources



Australian resources

Australian Hearing

Information on hearing loss, hearing aids and research in Australia

www.hearing.com.au

Australian Hearing is funded by the Australian Government to provide hearing services, including hearing aids, to young Australians aged from birth to 26 years of age, who are citizens and permanent residents and who have a permanent hearing loss. There is no charge for services, except for a small annual maintenance fee if hearing aids are fitted. See: www.hearing.com.au

Babies are seen by paediatric audiologists who have had specialised training in infant hearing and hearing aid fitting. Your family audiologist will discuss your baby's hearing test results and provide you with information about the impact the hearing loss is likely to have on their development. Your audiologist will also discuss amplification options and will work with you to plan a hearing and communication improvement program for your baby, including the provision of hearing aids if appropriate. After the hearing aid fitting program is complete, your audiologist will arrange a review schedule to monitor your baby's progress.

Australian Hearing's research division, the National Acoustic Laboratories (NAL), is recognised throughout the world for excellence in hearing research. The Longitudinal Outcomes Study for Children with Hearing Impairment (LOCHI) is monitoring the progress of a large number of children with hearing loss, providing families and professionals with important information about the impact of hearing loss and the benefits of early diagnosis and intervention. For more information see:

www.nal.gov.au

www.outcomes.nal.gov.au

Aussie Deaf Kids

Online support and resources for parents of hard of hearing and deaf children living in Australia.

www.aussiedeafkids.org.au

Audiological Society of Australia.

Provides information on Hearing Services in Australia.

www.audiology.asn.au

Sydney Cochlear Implant Centre (SCIC)

Provides information about cochlear implants

www.scic.org.au

International resources

Beginnings

For parents of children who are deaf or hard of hearing

<https://www.ncbegin.org/>

Hands And Voices (USA)

Parent driven organisation supporting families and their children who are deaf or hard of hearing, as well as the professionals who serve them.

www.handsandvoices.org

John Tracey Clinic

Distance education for parents of young children with a hearing loss.

www.jtc.org

My baby's hearing

www.babyhearing.org

National Deaf Children's Society (UK)

Provides support, information and advice for deaf children, young people and their families.

www.ndcs.org.uk

Building blocks

Reprinted with permission from:



Parent support and information

www.aussiedeafkids.org.au

Email: info@aussiedeafkids.org.au

Dear Parents,

If your baby has recently been diagnosed with a hearing loss, we know how you are feeling now. We have all experienced those feelings of isolation and sadness when our children were diagnosed. The diagnosis comes as a huge shock.

In the weeks, months and years ahead, however, you will discover that your baby will do all those things that you dreamt about before your baby was born. Your baby will smile at you, talk to you, go to school, play sport and find a job. Life won't always be easy but with your love and assistance, your baby will grow up to lead a happy, fulfilled and independent life.

This booklet has been put together for you by parents of deaf and hearing impaired children. We want you to know that you are not alone. We have all learnt so much from other parents and have drawn from their knowledge and experience to create this booklet for you. We have called it 'Building blocks' as you are beginning to build a happy and successful future for your baby.

All the best and enjoy your baby!

Firstly...

The main goal of early identification of hearing loss is access to communication. Cuddling, comforting, rocking, smiling and singing are all forms of communication.

You have your baby's best interests at heart. Parents are natural advocates for their children and you should play an active role in planning your baby's future.

Take one step at a time — great journeys start with a single step.

Get as much information as you can from many different sources. Parents who receive unbiased information and support will usually make the right decisions for their baby and family.

Take the time you need to make decisions — you don't need to rush. However, it is not a good idea to take months.

Ask questions and make sure you understand the answers.

Ask your baby's doctors and audiologists to write down the main points they have discussed with you.

Speak up about your concerns and worries.

Allow people to help and support you and your family — ask for help when you need it.

Store all the information you have about your baby's hearing loss in one place.

Be gentle on yourselves — take time out.



Good foundations...

Finding out your baby has a hearing loss is a shock. Fortunately, what your baby needs most from you at the moment are all those things that parents are so good at — touching, talking, comforting and loving. While there is a lot for you to learn and decisions need to be made, enjoy your baby and settle into a comfortable routine.

You have probably already started to learn a little about what having a baby with a hearing loss means from your doctor or audiologist. All the information can be overwhelming. But parents have learnt that the more information we have about hearing loss and its management, the more in control we are and the easier it is to get on with the things that need to be done.

Knowledge is power. Gather as much information you can from many different sources. Read brochures, books, articles and web sites. You will find some resources very helpful and others that you may not like. Our babies are all individuals and our families have different needs. What suits one family may not be right for yours.

Looking after yourself...

Parents respond in different ways to finding out our baby has a hearing loss. Denial, anger, sadness and fear are all common reactions. Most of us cry. How we respond to the diagnosis depends on many things that are unique to us and our family. Over time these strong feelings fade. We learn to accept the situation and get on with our lives — we develop some perspective about the role of deafness in our lives. There will still be times of sadness or grief — it is part of being a loving parent.

Having a baby with a hearing loss affects the whole family. Parents may approach their new roles differently. They may feel and react differently. Talk to your partner about how you are feeling and be aware of their needs as well. It can also be beneficial to share your feelings with family and friends you trust and love. Being honest and open with family and friends will help them understand that it is OK to talk about your baby and his/her hearing loss and help you to better deal with the situation. If you have other children, be aware of their feelings and needs.

You are the centre of your baby's universe and it is important that you look after yourself over these next few months. Try and get enough sleep; eat healthy meals and do some regular exercise. A walk each day is good for you and your baby!

In the first few weeks after your baby's diagnosis, it can be difficult to concentrate and 'get your act together.' Accept help from family and friends. We have put together a brochure you can give your family and friends which has some helpful tips and suggestions for them. A good meal, babysitting or taking your other children to school are all things that will help you and allow them to show you that they care.

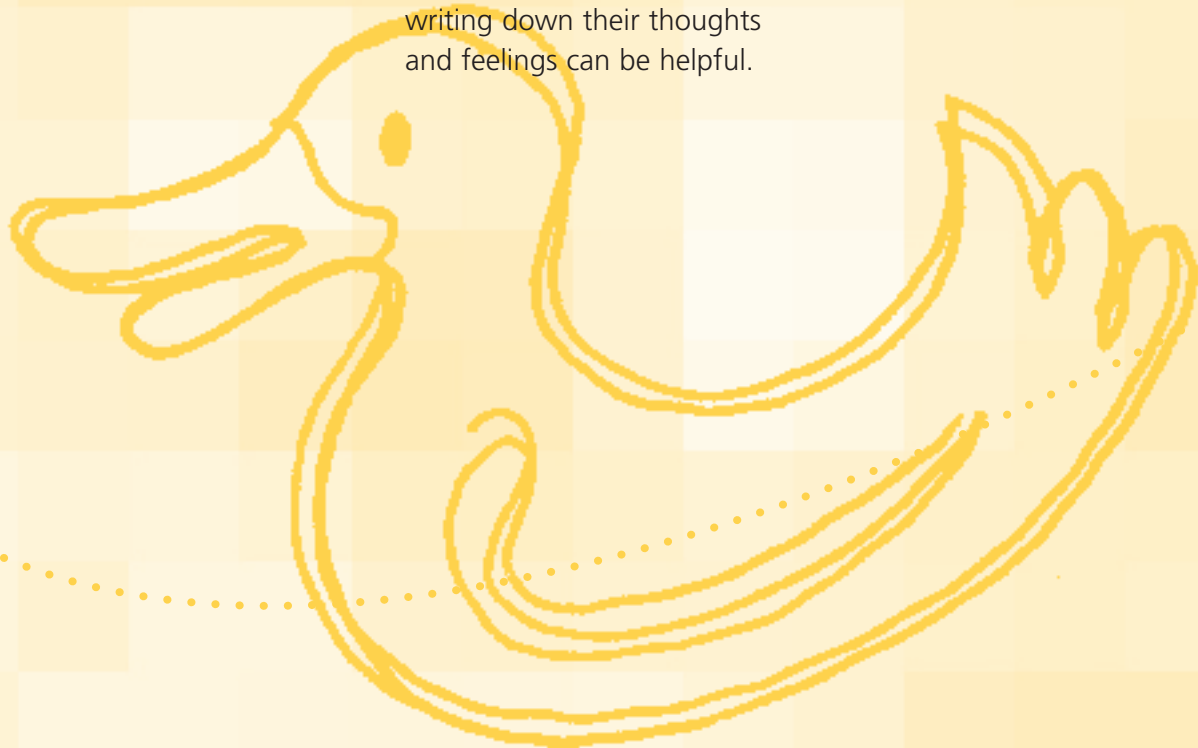
You will need...

Two ring binders — one for your baby's test results and reports and the other for information about hearing loss, services etc.

A business card holder — ask each person you see for a business card and you will have all their contact details handy.

A calendar — you will have many appointments over the next few months. Remember to book in time for coffee with friends or a meal with family (let them cook!).

A journal — write things down. We often forget things that are said to us when we are stressed and it can be a good idea to jot things down. Keep written records of appointments and phone calls etc. They can be brief but useful. Many parents also find writing down their thoughts and feelings can be helpful.



Your team...

You and your baby will be meeting a number of different people over the next weeks and months. They are all part of a multi-disciplinary team and are there to guide and support you.

- You and your family are the most important people on your baby's team and it is important that you build up a good rapport with your team members. You will then feel comfortable expressing your concerns and communicating your needs to them.
- Take a list of questions with you to appointments. We often forget the most important questions when we visit the doctor or audiologist.
- No question is too silly — someone has always asked the same question before you.
- Make sure you understand the answers to your questions — don't go home wondering.
- Ask for a professional interpreter if you are not fluent in English.
- Make sure you get copies of reports and test results for your records. These can be very useful over time. Keep them in that folder you have started!
- It is OK to question a professional's recommendations or ask for a second opinion. You must feel comfortable with the management of your baby's hearing loss.

Information...

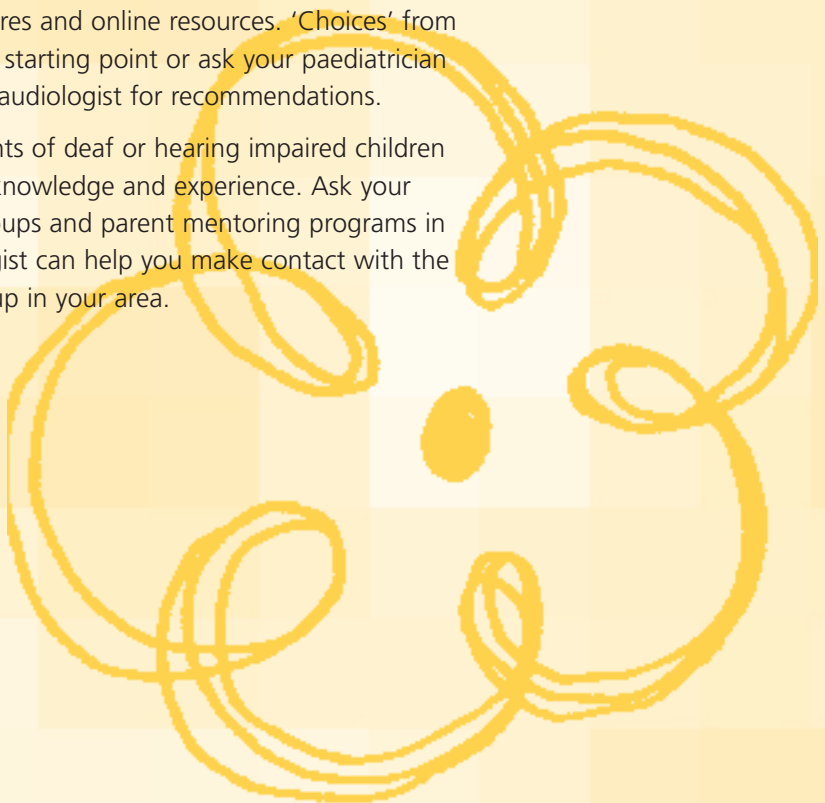
Good quality information about hearing loss and its management is so important. Get as much information as you can from many different sources and discuss what you have learnt with the professionals in your team, your family and friends and other parents of children with a hearing loss. You will then be able to make informed choices about your baby's future.

Some parents find all the initial information overwhelming and difficult to absorb while others can't get enough information. Go at a pace that suits you. The professional's role is to help you understand the information and support you in your decision-making.

It is important that you keep up with current information for many years to come. Technology, government policies and so on change over time and you need to keep up to date and informed as your baby gets older.

There are many excellent sources of good, accurate and reliable information — books, brochures and online resources. 'Choices' from Australian Hearing is the best starting point or ask your paediatrician at the diagnosing hospital or audiologist for recommendations.

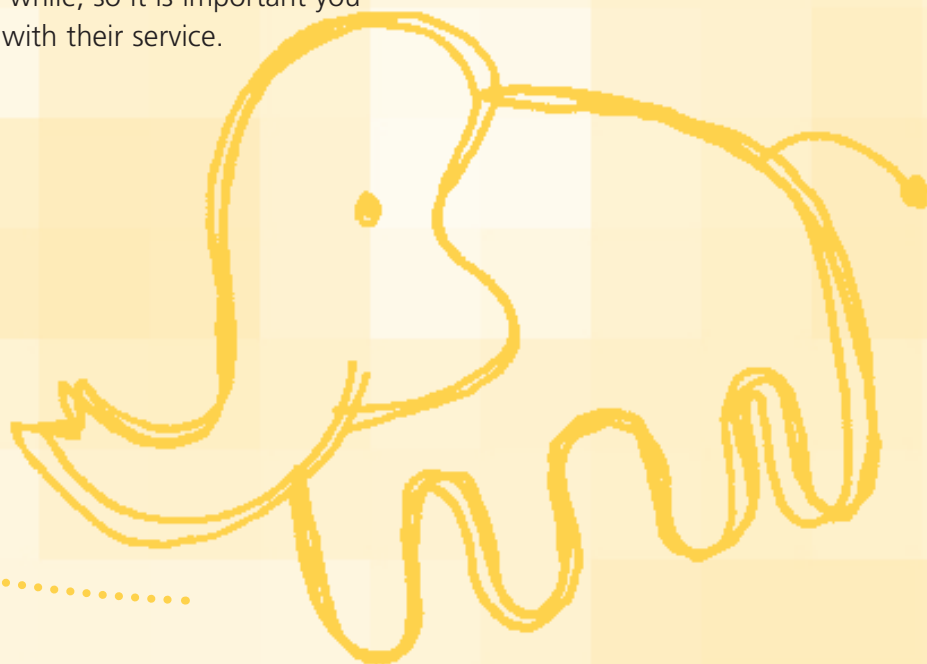
Most parents find other parents of deaf or hearing impaired children to be a wonderful source of knowledge and experience. Ask your audiologist about support groups and parent mentoring programs in your local area. Your audiologist can help you make contact with the Parent to Parent Support group in your area.



Decisions...

There appear to be so many decisions to be made when our baby is diagnosed with a hearing loss, and we need to make them when we are still in shock and know so little ...

- Don't rush into things. Taking a few weeks to find out more about your baby's hearing loss and needs will not affect his or her future. However, it is not a good idea to take months. It is recommended that your baby is aided and has started early intervention by the time he/she is 6 months old.
- You are entitled to choose the path that best suits your baby and family. Make sure that you know all the options available to you before making decisions. Be an informed decision-maker.
- Decisions you make now can be changed — decisions that are right for your family today may no longer be right in a few years.
- Shop around for an early intervention service that suits your family. Visit them and talk to the staff. They will become an important part of your life for a while, so it is important you feel comfortable and confident with their service.



Rural families...

Living outside a metropolitan area presents a number of other challenges for families. You will probably need to travel greater distances to access specialist and audiological services. Issues about work, looking after other children and travelling with a small baby increase the stress for rural families. It can seem like you have just arrived back home and you must be off again.

This will improve over time. There will be fewer appointments and you will be able to attend an *Australian Hearing Centre* closer to home. There are some services available to you that can relieve the financial burden. Ask your doctor, audiologist or hospital social worker about financial assistance for travel and accommodation in your State.

Travel safely. Don't drive if you are upset. It might be better to stay overnight after an appointment and drive home when you and your baby are rested and more relaxed.

Be organised. Keep all the information in one place. Remember any forms that may need to be signed. Have all your questions written down. Don't allow the doctor, audiologist or other health professional to rush you. You have travelled a long way to attend the appointment and you should return home feeling the visit was worthwhile.

Try and organise appointments that will be easiest for you and your family. Late Friday afternoon or early Monday morning may be less disruptive to family life.

Remember that the people who care about you would like to offer you help and support. Ask them when you need help — there will be other times when you can repay the favour.

You are not alone...

Most parents feel very isolated when their baby is diagnosed with a hearing loss. But you are not alone. There are many parents who have been on the journey before you and know how important it is for families to make contact with other families in a similar situation.

Where can you find other parents? Speak to your audiologist and tell him/her that you would like to meet other parents in your local area. Your early intervention service will be an excellent source for support and friendship with other families. There are Parent Groups in most States who provide information and support to parents with children of all ages. And last, but not least, there are online groups where many families have found support and good practical information from other families living with kids with a hearing loss in a day-to-day situation.

You will learn so much from other parents. They have a vast wealth of experience and knowledge from which you can benefit. And other parents can learn from YOUR unique perspective and experience. You really are not alone...

Glossary



A

Acoustic nerve

The eighth cranial nerve, combining the nerves of hearing (cochlear) and balance (vestibular).

Acquired deafness

A loss of hearing that occurs or develops some time during the lifespan but is not present at birth.

Amplification

The use of hearing aids and other electronic devices to increase the loudness of a sound.

Assistive Communication (listening) Devices

Equipment that can be used with or instead of hearing devices to help deaf and hard of hearing people. For example, an amplified telephone, vibrating alarm clock or hearing loop system.

Atresia (aural)

An ear malformation in which there is an absence of the external ear canal, usually with abnormalities of the outer ear, and/or middle ear space.

Audiogram

A chart used to record the results of a hearing test. It includes a table and a graph for each ear showing how well a person can hear sounds at various frequencies at the time of testing.

Audiological assessment/evaluation

A range of hearing tests, which show the type and degree of hearing loss.

Audiology

The study of hearing and hearing impairment.

Auditory Brainstem Response (ABR) test

An objective test (performed while the baby is sleeping) that can be used to assess hearing function in infants and young children. An electroencephalographic (EEG) response is measured from electrodes placed on the scalp that measure the response of the baby's hearing nerve to sound. Other terms are: Brainstem Evoked Response (BSER), Brainstem Auditory Evoked Potential (BAEP), and Brainstem Auditory Evoked Response (BAER).

(Automated) Auditory Brainstem Response ([A]ABR)

Similar to Auditory Brainstem Response (ABR) (see above) except the waveforms generated are measured against a template to determine a pass or refer result.

Auditory Neuropathy Spectrum Disorder (ANSD)

A name for a pattern of test results. ANSD occurs when sound enters the ear normally, but the transmission of sound from the inner ear to the brain does not occur in the normal way. Other terms are: Auditory Neuropathy (AN) and Auditory Neuropathy/Auditory Dyssynchrony (AN/AD).

B

Bilateral hearing loss

A hearing loss in both ears

Binaural

Relating to both ears



Glossary

C

Canal, ear

The passage from the pinna to the eardrum through which sound waves travel.

Cerumen

A yellow or brown wax-like substance (“earwax”) produced in the outer one-third of the external ear canal.

Cochlea

The snail-shaped tube, in the inner ear, where sound is converted into nerve impulses to be sent to the brain.

Cochlear implant

A medical device that is surgically implanted and bypasses damaged inner ear structures and directly stimulates the auditory nerve, helping individuals who have severe to profound hearing loss to interpret sounds and speech.

Conductive hearing loss

One of three types of hearing loss (see Hearing loss).

D

Decibel

A unit of measurement of sound. When testing hearing, dB is used to indicate the loudness or intensity of a sound. A whisper is about 20 dB, ringing telephone is around 80dB and a jet engine taking off is about 150dB.

Diagnostic audiologic evaluation

A range of hearing tests conducted by an audiologist to determine a person’s hearing status. These tests will confirm whether or not hearing problems exist, and if so, to what degree.

E

Ear, external

The external ear consists of the pinna (the part we can see), the ear canal and the outer surface of the eardrum.

Ear, inner

Comprises the vestibule, the semi-circular canals (balance organs), the inner surface of the oval and round windows, and the cochlea.

Ear, middle

Includes the eardrum, three tiny bones called the ossicles, and the eustachian tube.

Earache

Any ache or pain arising in the ear. Technically it may be referred to as otalgia.

Eardrum

The eardrum is a thin membrane that separates the ear canal and the middle ear. The medical term is tympanic membrane.

Ear wax

Wax in the external ear canal; see cerumen.

Eustachian tube

A passageway between the middle ear and the back of the nose that allows air to move in and out of the middle ear. This makes sure that the air pressure inside the middle ear is the same as the air pressure on the outside of the eardrum.

F

Feedback

The whistling sound sometimes produced by a hearing aid.

Glossary



Frequency

Frequency is the measure of the vibrations of sound waves. This frequency is interpreted by a person, through their ears in the form of pitch. Frequency is measured in hertz and kilohertz.

G

Genetic Hearing Loss

Hearing loss caused by changes to the genes.

Glue ear

A common complication of middle ear infections. The “glue” is a thick sticky fluid that stays in the cavity of the middle ear after the infection clears up. Glue ear makes it harder for sound to travel from the outer ear to the inner ear.

Grommets

Plastic tubes inserted into a child’s eardrum as a treatment for glue ear.

H

Hair cells

The hair-like structures in the inner ear that transform sound waves into electrical impulses that are then relayed to the brain via the auditory nerve.

Hearing aid

An electric amplifying device designed to make sounds audible to the individual with a hearing loss.

Hearing aid, Behind-the-Ear (BTE)

A type of hearing aid designed to fit behind the ear, which transmits sound to the ear canal via tubing and a custom earmould.

Hearing aid, Completely-in-the-Canal (CIC)

A type of hearing aid that is micro-miniature in size and fits entirely within the ear canal to most closely imitate the natural hearing process. It is custom-designed to fit the contours of the wearer’s ear canal.

Hearing aid, In-the-Ear (ITE)

A type of hearing aid that fits within the outer ear or ear canal. It is custom-designed to fit the shape of the wearer’s ear canal.

Hearing loop system

An Assistive Listening Device that consists of microphone(s), an amplifier, and a loop of wire that may be worn around the neck or is installed around part of a room. Sound is transmitted directly into headphones or hearing aids worn by people within the area enclosed by the loop, thereby reducing the effects of background noise and distance.



The International Deafness Symbol is usually displayed where a hearing loop is installed in public places.

Hearing loss, conductive

Impairment of hearing due to the failure of sound pressure waves to reach the cochlea through the normal air conduction channels. This type of deafness is often responsive to medical or surgical treatment.

Hearing loss, mixed

A combination of conductive and sensorineural hearing loss.



Glossary

Hearing loss, sensorineural

A type of hearing impairment caused by damage that occurs to the cochlea. Sensorineural damage is usually irreversible.

Hertz (Hz)

When testing hearing, Hz is used to indicate the pitch or frequency of a sound. A 250 Hz sound is a very low frequency and an 8000 Hz sound is a very high frequency.

Hearing screening

Hearing screening identifies if a child needs further testing. However, a screening test can be never 100% accurate and sometimes may cause false alarm or miss a problem. A screening test is not the same as a diagnostic evaluation, which assesses hearing more thoroughly. If there are any problems on a hearing screening, hearing will usually be re-screened. If necessary, after the second screening test, there may be a referral for a diagnostic audiologic evaluation.

I

Impression

A cast made of the contours within the external ear, from which an earmould (for BTE instruments) or custom shell (for ITE, ITC and CIC instruments) is made. Impressions typically are made using a silicone or material which is of soft consistency for insertion into the ear canal.

L

Lip read

To understand by close observation of the speaker's lips. It is now more commonly known as speechreading, since facial expression and gestures enter into communication.

M

Microtia

Abnormal growth of the outer ear. Severity varies from minor changes in ear shape to differences in ear shape to complete absence of the outer ear.

Mixed hearing loss

One of three types of hearing loss (see Hearing loss).

N

Nerve, cochlear

The branch of the eighth cranial (acoustic) nerve that arises in the cochlea and conveys sound stimuli to the brain.

O

Ossicles

The small bones of the middle ear that convey sound impulses from the eardrum to the oval window. They are known as the hammer (malleus), anvil (incus), and stirrup (stapes).

Otitis

A broad term for inflammation of the ear.

Otitis Media (OM)

A middle ear infection. Children with recurring ear infections may experience fluctuating hearing loss and may be at risk for speech and language delays.

Otoacoustic Emissions (OAE)

A hearing test that uses a microphone placed in the ear canal to measure sound waves generated in the cochlea in response to clicks or tone bursts.

Glossary



P

Perforated eardrum

An eardrum that has been ruptured by accident or disease.

Pinna

The portion of the ear that is visible on the side of the head.

Profound deafness

Extreme hearing impairment bordering on total deafness.

Pure tone

A continuous signal of sound at a single frequency, commonly used in basic hearing screening tests.

R

Risk factor

A factor that may increase the chance of an infant being born with or developing a hearing loss. Risk factors may include family history of hearing loss, meningitis, congenital infection, very low birth weight.

S

Statewide Infant Screening-Hearing (SWIS-H)

The program by which all newborns in NSW are offered hearing screening within the first few days of birth.

Severe deafness

A level of deafness where a hearing aid will be necessary.

Sign language

Is a language which uses hand movements to communicate. A sign language can include signs and finger spelling. The Australian Deaf Community use Auslan.

Stethoclip

A device that enables a hearing person to listen to a hearing aid to make sure that it is working.

T

Tympanic membrane

See ear drum.

U

Unilateral hearing loss

A hearing loss in one ear only.



Acknowledgements

SWIS-H Parent Information Package Working Party (2014 revision)

Dr Monica Wilkinson	Audiology Manager, Sydney Children's Hospital Network (Randwick)
Ms Rose Douglas	Audiology Department Head, Sydney Children's Hospital Network (Westmead)
Ms Ann Porter	CEO, Aussie Deaf Kids
Mrs Melanie Dowling	Kaleidoscope, John Hunter Children's Hospital
Dr Norm Kelk	Social Worker, Hearing Support Service, Sydney Children's Hospital Network (Randwick)
Ms Deepali Trackroo	SWIS-H Social Worker, Sydney Children's Hospital Network (Westmead)
Ms Genelle Cook	Department Head, Jim Patrick Audiology Centre, Royal Institute for Deaf and Blind Children
Ms Jo Oliver	SWISH Social Worker / Baby Hearing Clinic Coordinator, John Hunter Children's Hospital
Dr Elizabeth Peadon	Community Paediatrician, Department Head, Deafness Centre

Audiologists from Sydney Children's Hospital Network (Randwick and Westmead) John Hunter Children's Hospital

We also acknowledge contributors of the original 2007 document:

Deborah Friend, Andrew Geyl, Jenny Havyatt, Pat Mutton, Leigh-Erin Radford, Sue Rayner, David Starte, Monica Summers, Heidi Taylor and Marlena Samphier.

