

General practice activity can affect hospital visits



Practices who see their patients more often are associated with fewer ED presentations and hospital admissions than practices who see their patients less often.

Findings

Patients that attended a high-frequency servicing practice were

10% less likely

to have an ED presentation

12% less likely

to have an unplanned hospital admission

This is seen in both patients who attended the practice frequently and those who attended less often. *

Patient characteristics

Patients managed by high-frequency servicing practices tended to be:

- Older
- From a disadvantaged area
- More likely to have a chronic condition

Practice characteristics

Practices that saw patients more often tended to be:

- Located outside of major cities
- Smaller. No high-frequency servicing practice in this study had over 12,000 patients.

About the study

This study uses data from the Lumos program which links deidentified general practice data with other health service data, to shine a light on patient journeys through the health system.

Study period:

1 January 2018 – 31 December 2019

Who is included?

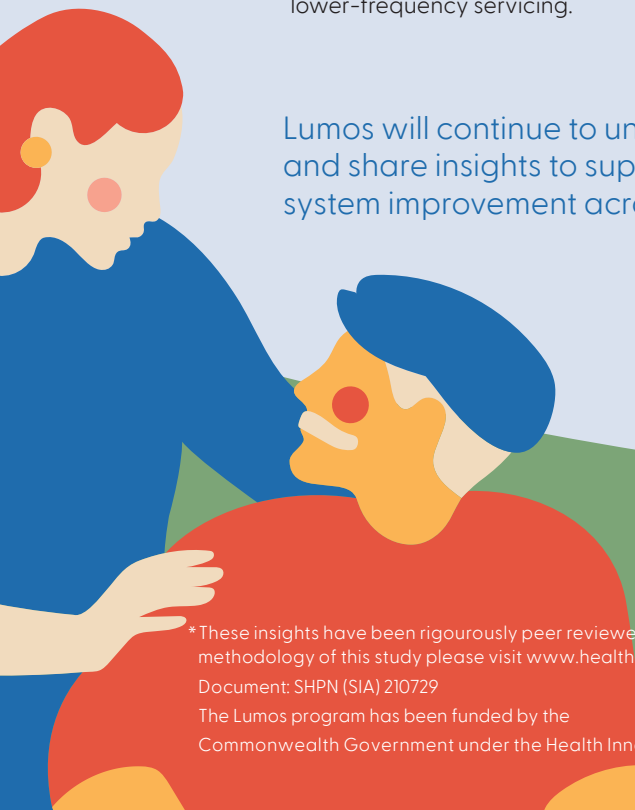
All patients that attended one of 198 Lumos-participating practices across NSW during the study period.

How are practices defined?

High-frequency servicing practices are practices where >30% of patients visited at least 12 times in 2 years.

- 22% of the practices in this study met the criteria for being a high-frequency servicing practice,
- 78% of practices were considered lower-frequency servicing.

Lumos will continue to uncover and share insights to support health system improvement across NSW



*These insights have been rigorously peer reviewed. For further information on the methodology of this study please visit www.health.nsw.gov.au/lumos/pages/insights.aspx

Document: SHPN (SIA) 210729

The Lumos program has been funded by the Commonwealth Government under the Health Innovation Fund.