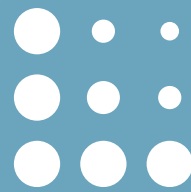


# Care in General Practice can affect hospital visits



## Patients who have prompt follow-up after discharge from hospital have fewer unplanned readmissions

### Findings

A visit to the GP following discharge from an unplanned stay in hospital reduces the risk of being readmitted immediately and down the track after accounting for differences.

A visit within **two days** was followed by **32%** fewer readmissions within the first week

A visit in the **first week** was followed by **7%** fewer readmissions within 28 days

A visit in the first **4 weeks** was followed by **13%** fewer readmissions down the track (1-3 months)

### About the study

Lumos linked data January 2017–December 2019

Patient records from 344 general practices that supplied data in the April 2021 linkage for the study period (covering 2,852,691 attending patients aged > 2 years) linked to:

- Emergency Department Data Collection
- Admitted Patient Data Collection
- Death registration

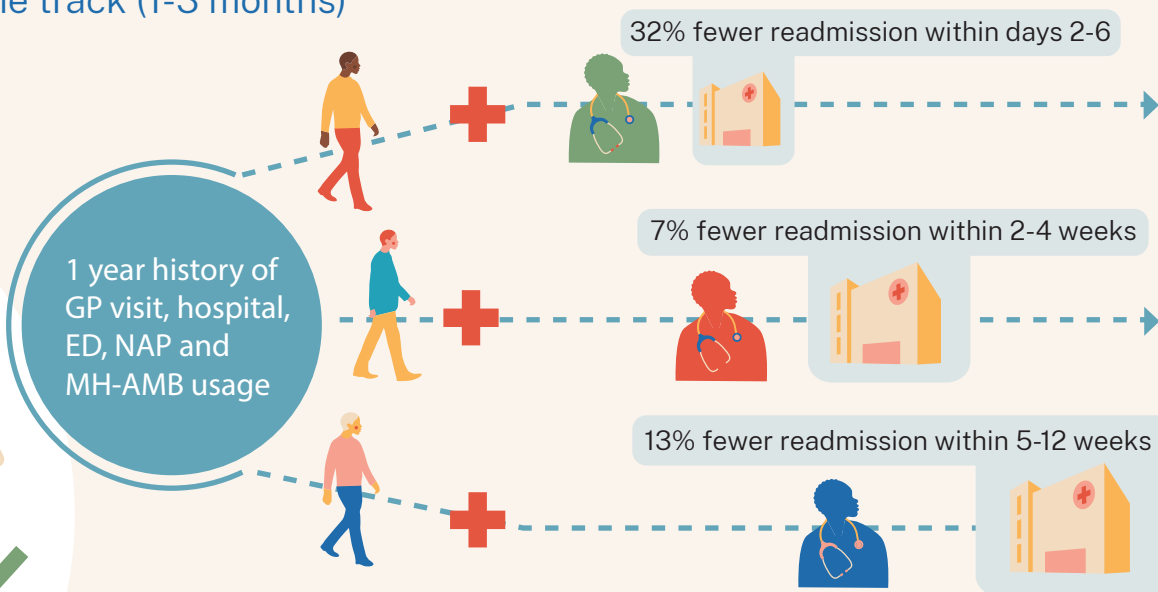
Number of observations: 542,936

Number of unplanned readmissions: 180,143

The proportion of patients that did not have a GP visit prior to an unplanned readmission was 55%.

### Study Details

- Unplanned admission
- GP visit within 2 days post discharge
- GP visit within week 1 post discharge
- GP visit within weeks 1-4 post discharge



NAP: Non Admitted patient  
MH-AMB: Mental Health Ambulatory

GP: General Practice  
ED: Emergency Department