

Cosmetics potentially containing metal in Magnetic Resonance Imaging



SAFETY INFORMATION 018/25

Issue date:	17 December 2025
Content reviewed by:	Representatives from ACI Medical Imaging Network, Ophthalmology Network,
Distributed to:	Chief Executives; Directors of Clinical Governance; Director, Regulation and Compliance Unit
KEY MESSAGE:	Advise clinicians cosmetics containing metal, such as coloured contact lenses, magnetic eyelashes, and eyeshadow, pose a safety risk during MRI scans and should be identified and removed prior to imaging.
ACTION REQUIRED BY:	Medical Imaging, Radiology, Ophthalmology Managers, Clinicians and administration staff.
REQUIRED ACTION:	<ol style="list-style-type: none"> 1. Distribute this safety notice to all relevant clinicians and clinical departments who perform MRI or MRI patient bookings 2. At time of booking, patients should be advised not to wear cosmetic contact lenses to the MRI appointment or ensure they are prepared with a contact lens case for storage during imaging 3. MRI safety checklists should be updated to include cosmetics potentially containing metal including coloured contact lenses, magnetic eyelashes, and eyeshadows 4. MRI technologists need to verbally check if a patient is wearing any cosmetics potentially containing metal 5. Patients wearing cosmetic contact lenses, magnetic eyelashes, and metallic eyeshadow, should be advised to remove these before an MRI scan. 6. Patient should be advised to alert the MRI staff immediately if they have any feeling of heating or discomfort during the scan to cease imaging and be assessed appropriate.
DEADLINE:	N/A
We recommend you also inform:	<p>Directors, Managers and Staff of:</p> <ul style="list-style-type: none"> • Radiology • Ophthalmology • Clinical Governance- Patient safety • Emergency departments • Work Health and Safety • Clinical Research

Cosmetics potentially containing metal in Magnetic Resonance Imaging

i SI: 018/25

Website:	https://www.health.nsw.gov.au/sabs/Pages/default.aspx http://internal.health.nsw.gov.au/quality/sabs/index.html
Review date:	November 2027

Cosmetics potentially containing metal in Magnetic Resonance Imaging

SI: 018/25

Situation

Cosmetics containing metal, including coloured contact lenses, magnetic eyelashes, and eyeshadows, have the potential for metallic fragments present to interact with the Magnetic Resonance Imaging (MRI). In particular, cosmetic contact lenses, commonly referred to as “baby doll” lenses, are becoming more popular and have been identified as a risk to patient safety.

The pigments in most if not all cosmetic lenses are near the front surface of a contact lens and are reasonably isolated from corneal tissue but there is the remote potential for minimal thermal damage of the ocular surface during MRI scan. This Safety information replaces the previous Safety Notice SN019/23.

Background

Cosmetics potentially containing metal are not specified in the suggested checklist referenced in the RANZCR MRI Safety Guidelines Section 7.5 & appendix C. This results in inconsistencies seeking information on metal in the eye that is not directly related to “injury to the eye involving a metallic object or fragment”.

Not all current MRI pre-screening questionnaires identify the presence of cosmetics, including coloured contact lenses, which may lead to failure to identify all risks.

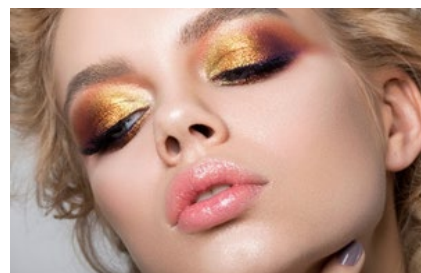
Patients wearing cosmetic contact lenses, false eyelashes or eyeshadows that may contain metal need to remove these cosmetics before entering the MRI suit for safety reasons.

Examples of the cosmetic contact lenses:



Assessment

There is no standardised NSW Health or National MRI safety checklist which has resulted in variations of pre-screening questionnaires. Although checklists follow the same principles, the level of detail varies which means that many medical imaging centres performing MRI may not ask about cosmetics potentially containing metal.



Cosmetics potentially containing metal in Magnetic Resonance Imaging

i SI: 018/25

Recommendations for NSW health facilities

1. At the time of booking, patients should be advised not to wear cosmetic contact lenses to the MRI appointment. Alternatively, patients should ensure they are prepared with a contact lens case for storage.
2. MRI safety checklists should be updated to include listing cosmetics potentially containing metal including coloured contact lenses, magnetic eyelashes, and eyeshadows.
3. MRI technologists need to verbally confirm if a patient is wearing any cosmetics potentially containing metal including coloured contact lenses, magnetic eyelashes, and eyeshadows.
4. Patients wearing cosmetic contact lenses, magnetic eyelashes, and metallic eyeshadow, should be advised to remove these before an MRI scan.
5. Patients should be advised to alert the MRI staff immediately if they experience heating or discomfort during the scan so imaging can be stopped and the patient assessed.

Note: The removal of clear prescription contact lenses is not required.

Further information

- [Incidental discovery of circle contact lens by MRI: you can't scan my poker face, circle contact lens as a potential MRI hazard](#)
- [MRI Contact Lens Considerations](#)
- [RANZCR MRI Safety Guidelines 2021](#)
- [MRI Safety.com - 2019.Shellock.Screening.Form.Patients](#)

Reference

- Park, J. H., Kang, C. H., & Kim, S. B. (2021). The Effect of Cosmetics on Magnetic Resonance Imaging: Focusing on Eye Cosmetics. Journal of the Korean Society of MR Technology, 31(1), 41-49.