

# Whole of Health Program MasterClass #11

‘A continuous state of change’

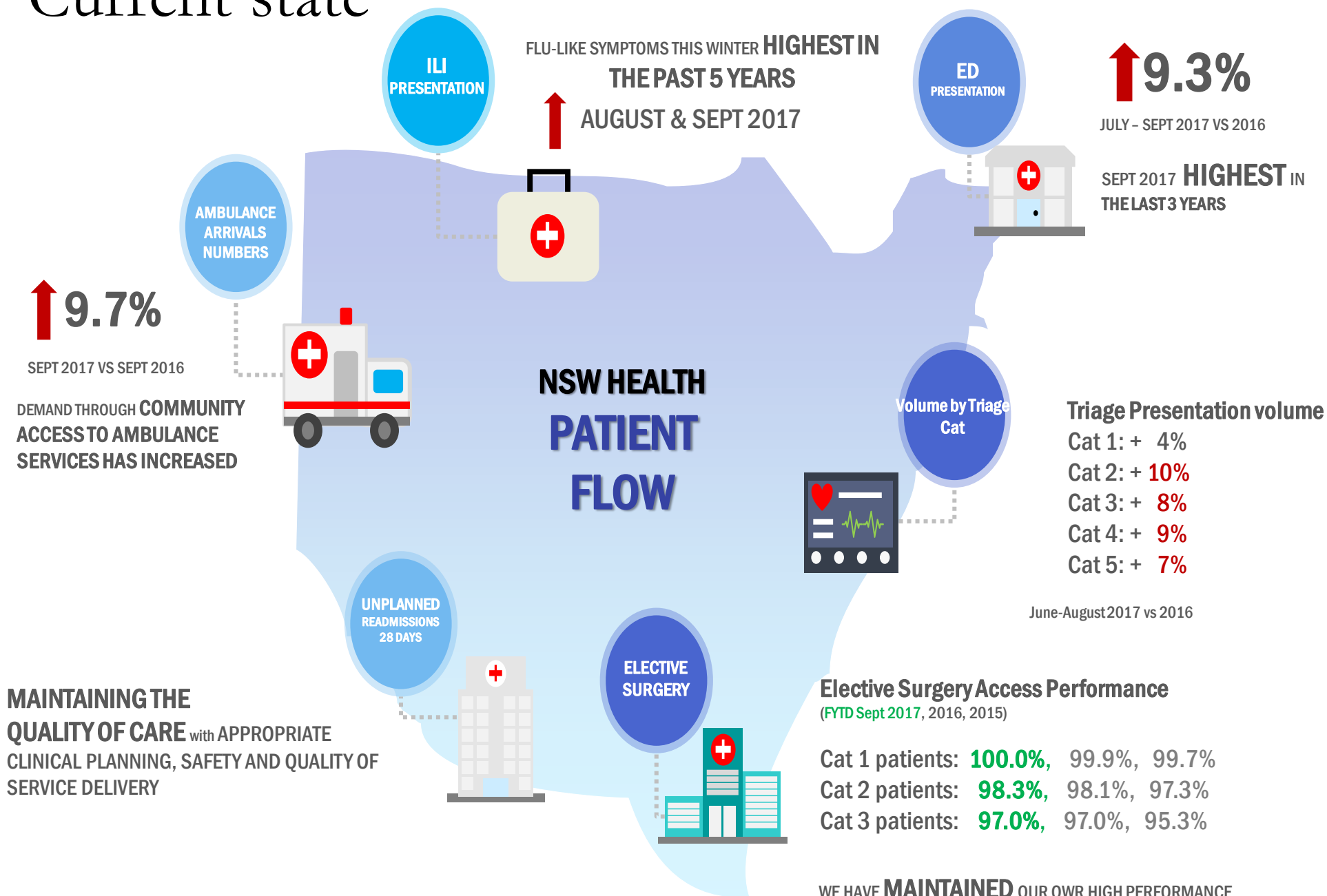
Transformation, Adaptation & Sustainability across the system

29 November, 2017

# A continuous state of change



# Current state





IMPROVE THE **PATIENT JOURNEY** IN NSW PUBLIC HOSPITALS



IMPROVE THE **PATIENT EXPERIENCE AND PATIENT SAFETY**



ENSURE THAT PATIENTS HAVE **TIMELY ACCESS TO CARE**



EFFECTIVELY **MANAGE HEALTH SYSTEM CAPACITY** ACROSS NSW



STRENGTHEN **KNOWLEDGE, SKILLS AND CAPABILITIES** IN PATIENT FLOW AND SERVICE IMPROVEMENT



BUILD A SENSE OF **COMMON PURPOSE AND SHARED OWNERSHIP** IN HOW WE ADDRESS PATIENT FLOW IMPROVEMENT



IMPROVE **SYSTEM EFFICIENCY** TO PROVIDE CLINICIANS WITH **ADDITIONAL CAPACITY** AND TIME FOR PATIENT MANAGEMENT

# Share knowledge across the system

