

2017 Winter Flu Review

Health Protection NSW
November 2017



Health

Key Flu Issues

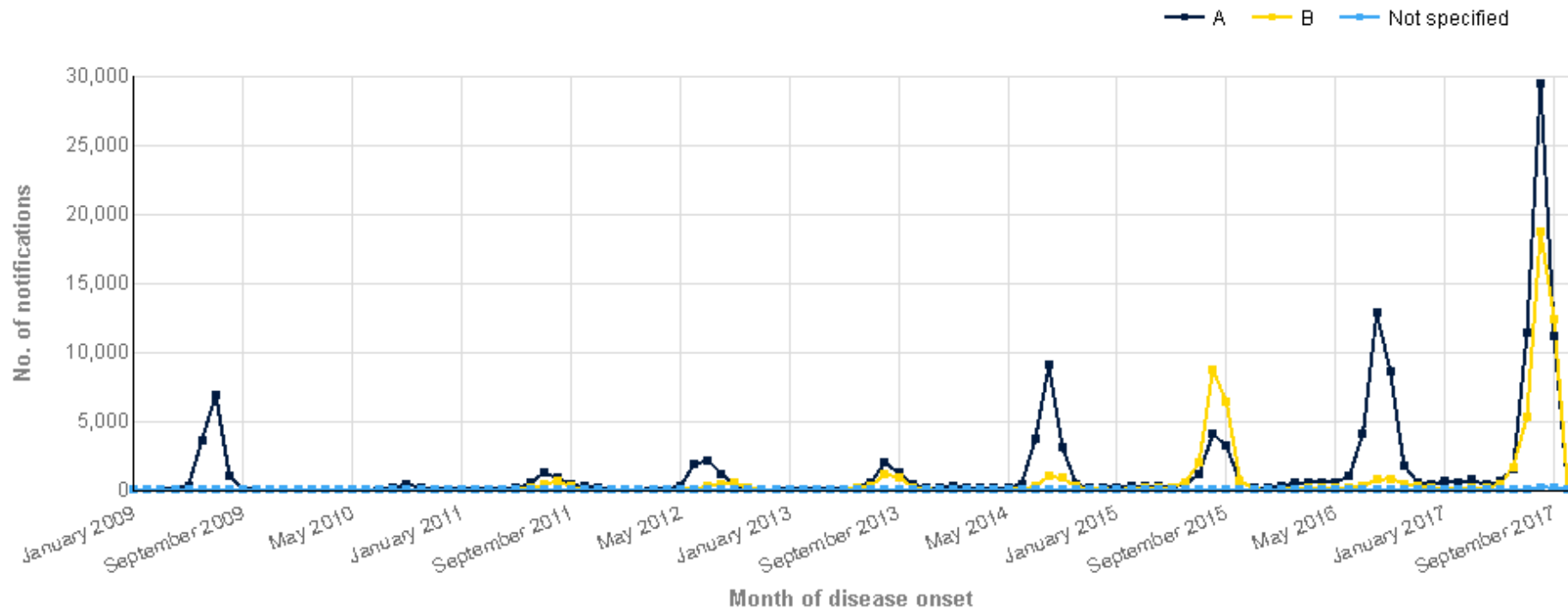
- Was this Flu season worse than previous?
 - Yes and No
- Indicators of impact and severity
 - ED activity – which are the best measures?
 - What do hospital admissions surveillance and other markers tell us about severity?
 - What was the impact of new testing capacity?
- Updates for 2018
 - Staff vaccination policy and Winter Flu Campaign

Key points

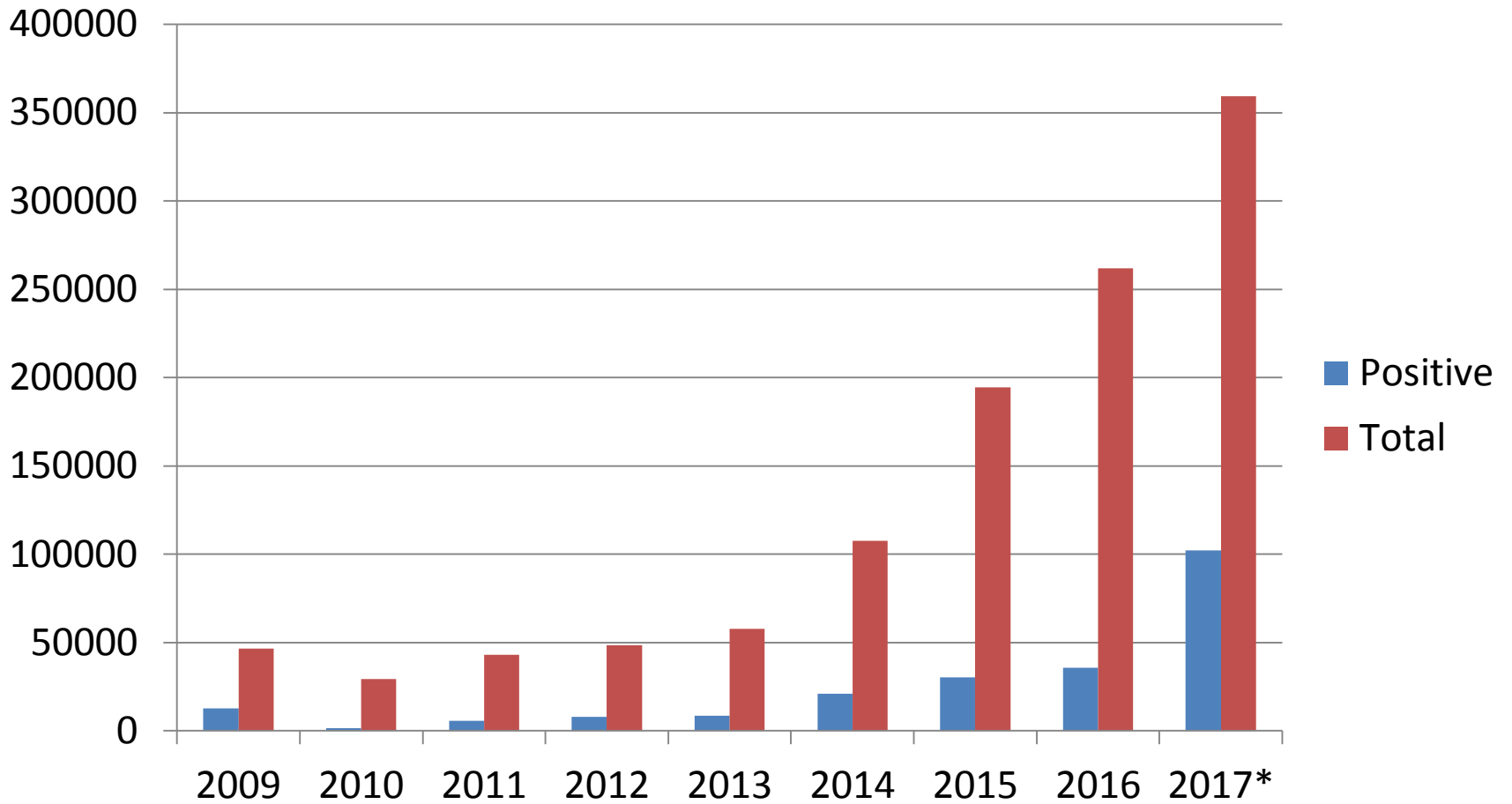
- High number of notifications seen throughout summer
- Peak of influenza activity rate 50.5%(w/end20 August)
- PHREDSS exceeded the threshold of 15 on 23 June, peaked 11 August (98.4)
- At beginning of season influenza B predominated
- H3N2 predominant thereafter until late when B returned

Influenza Notifications

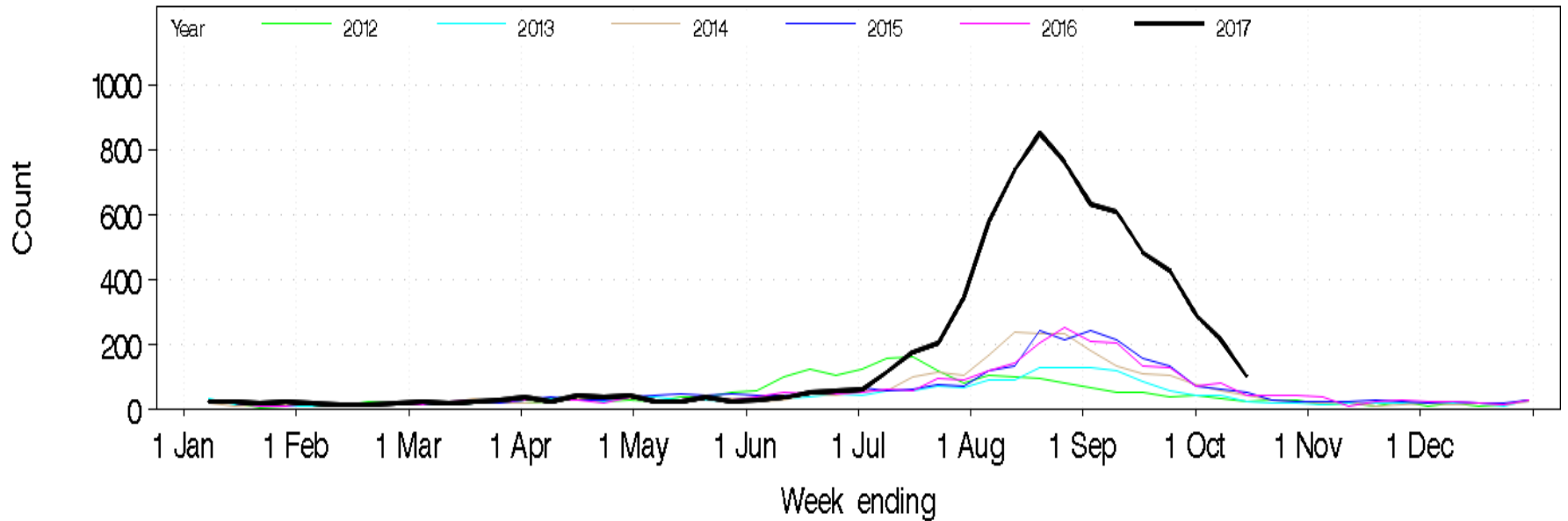
Influenza (A, B, Not specified) notifications in NSW residents, by month of disease onset. January 2009 to October 2017



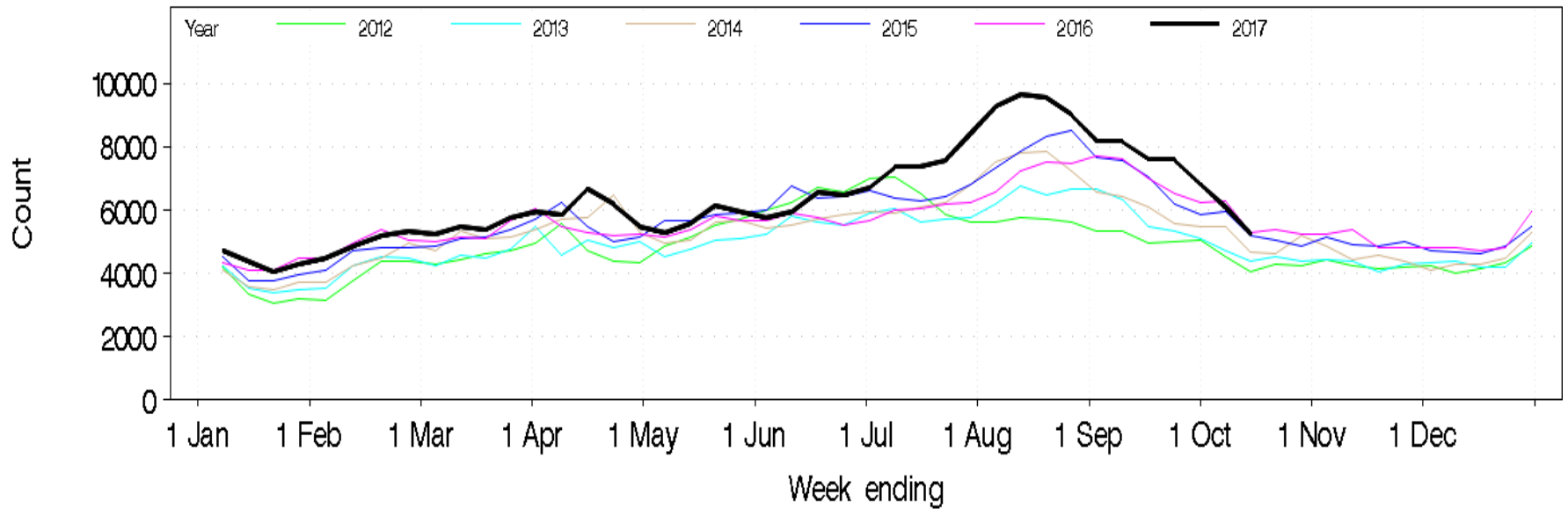
Influenza Testing



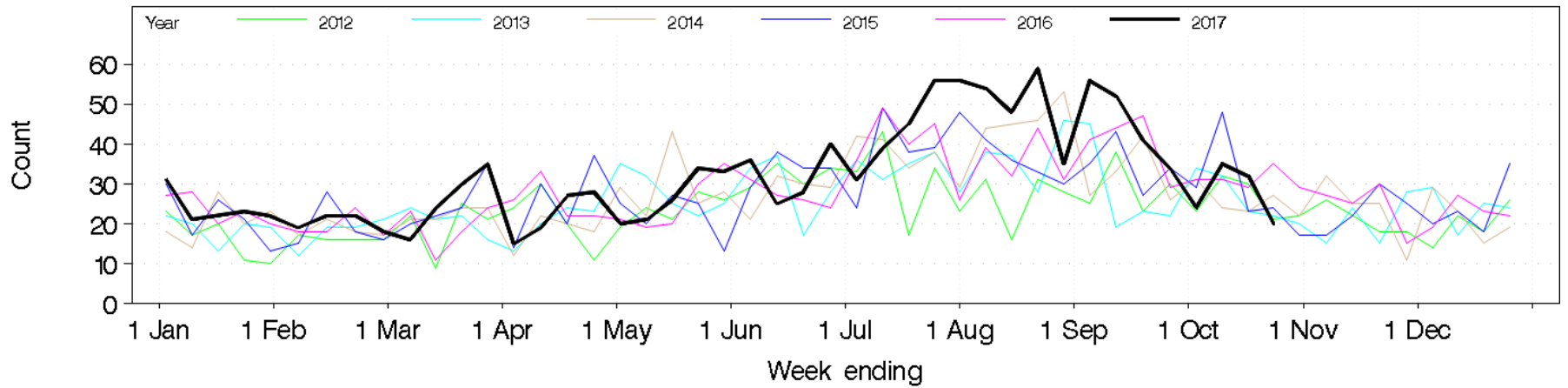
Influenza-Like Illness



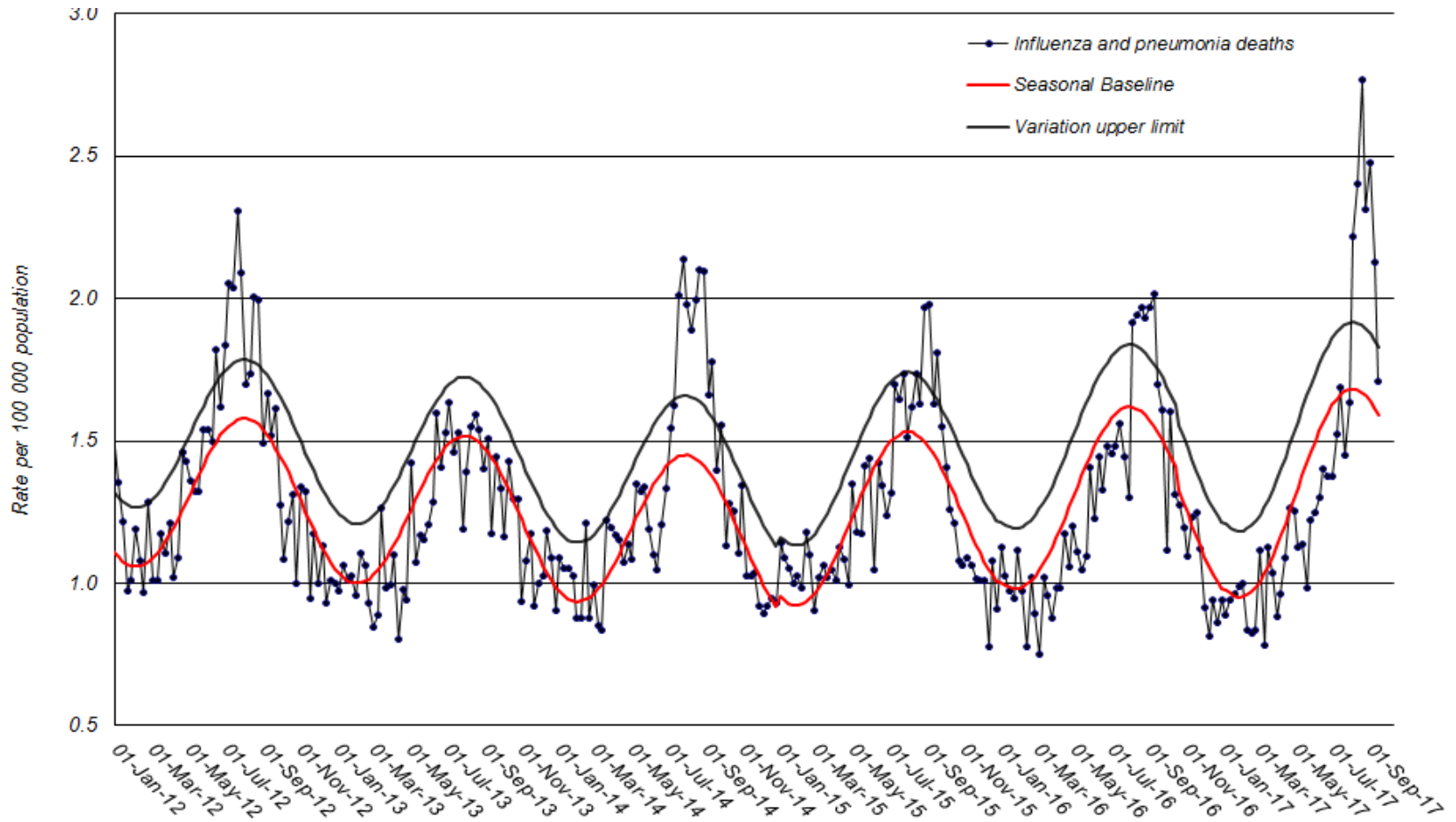
All Respiratory, Fever and Unspecified Infections.



Pneumonia/ILI admissions to critical care



Deaths Data



Vaccine Efficacy

Interim estimates from WHO CC:

- H1N1 50%
- H3N2 10% (varied by clade)
- B 57%

No significant effect >65 year olds

Vaccine Recommendations 2018

Following the Consultation, WHO announced its recommendations for the composition of trivalent vaccine for use in the 2018 Southern Hemisphere influenza season, which includes changes in the influenza A(H3N2) and influenza B/Yamagata lineage components, as follows:

- an A/Michigan/45/2015 (H1N1)pdm09-like virus;
- an A/Singapore/INF1HM-16-0019/2016 (H3N2)-like virus;
- a B/Phuket/3073/2013-like virus (Yamagata lineage).

WHO also recommended that quadrivalent vaccines containing two influenza B viruses should contain the above three viruses and a B/Brisbane/60/2008-like virus (Victoria lineage).

The influenza A (H3N2) vaccine strain in the current 2017 seasonal influenza vaccines which is to be replaced in the 2018 season vaccines is the A/Hong Kong/4801/2014 (H3N2)-like virus.

- Consideration of FluAd – quadruple dose vaccine for over 65's, however only covers 3 strains

Staff Flu Vaccination 2018

- Update of PD related to Occupational Vaccination
 - Flu vaccine provided free for all workers in Category A and B positions
 - Compulsory for staff working in category A High-risk clinical areas
 - Phased approach, commencing in 2018.

Aged Care Facility Response

- Continue to work with peak bodies and individual facilities to improve staff and resident vaccination, outbreak preparedness and response
- Continue to facilitate access to Tamiflu
- Work via Commonwealth on improving staff vaccination uptake and more rigorous accreditation standards
- Work at local level on aged care “flying squads”

**STAFF
INFLUENZA
VACCINATION.
PROTECT
YOURSELF
AND YOUR
RESIDENTS.**



Health

2018 Winter Flu Campaign

- Looking at higher profile campaigns
 - Vaccination
 - Catch it, Bin it Kill it
 - Keep EDs for Emergencies
- Collaborate with Transport, Education, corporates

