



NSW Ambulance

excellence in care

The Macarthur Initiative

**A joint SWSLHD and NSW
Ambulance Integrated Care Project**





The Macarthur Initiative

- An alternate pathways and destination model
- Allows suitably identified patients to be referred to their GP or local medical centre
- Aims at reducing unnecessary presentations to Campbelltown ED



Initiative Origin

- Reform Plan for Ambulance 2012 / Auditor Generals Report 2013
- Campbelltown ED - pressures & performance
- Strategies employed by Campbelltown to create flow
 - Successful collaboration of ECP referral pathways into Ambulatory Care
 - Collaboration on mutual escalation plans which initiated discussion on future long term goals



Initiative Rationale

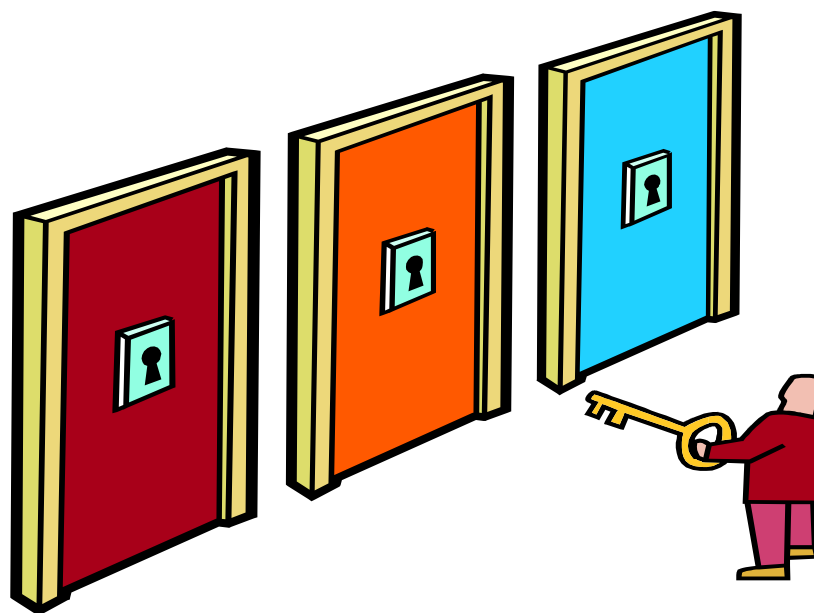
- NSW Ambulance; Campbelltown Hospital and the LHD jointly identified there was potential to reduce low acuity presentations to Campbelltown ED
- Potential for early discussions with new health facilities
- Area demographics - Growing population / demand management
- Central Coast Proof of Concept



NSW Ambulance

excellence in care

Alternate Pathways Proof of Concept Central Coast - 2014



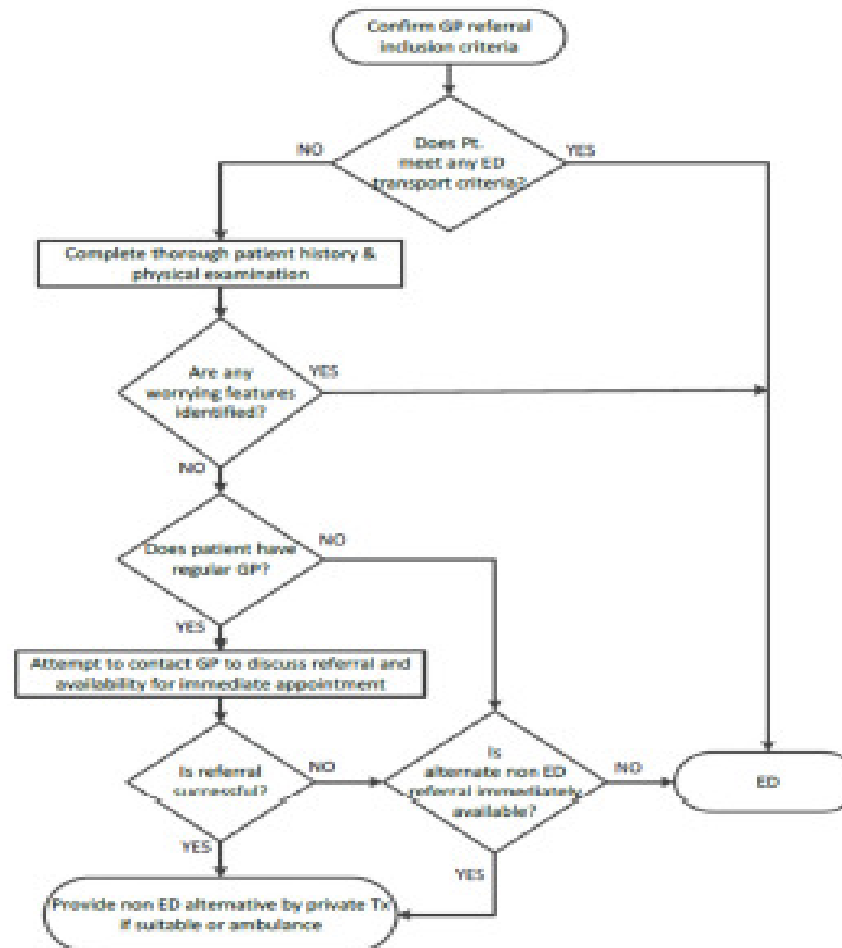


Proof of Concept – Central Coast 2014

- An alternate pathways & referral model to allow ICP's to identify and refer low acuity patients to their own GP's
- Commenced February 2014 / 6 month trial
- A cohort of ICPs trained in advanced patient assessment skills
- Over 6 month period 83 patients attended by Ambulance and referred to GP's.



Central Coast Referral Pathway





Key Findings – Central Coast PoC

- 83 patients had alternate referrals attempted
- Successful referral in 82 patients
- Referrals were primarily directed to the patient's own GP
- 84% of patients were transported by private vehicle
- Follow up contact & survey conducted ascertained majority of patients were “very satisfied”



NSW Ambulance

excellence in care

First Steps - The Macarthur Initiative



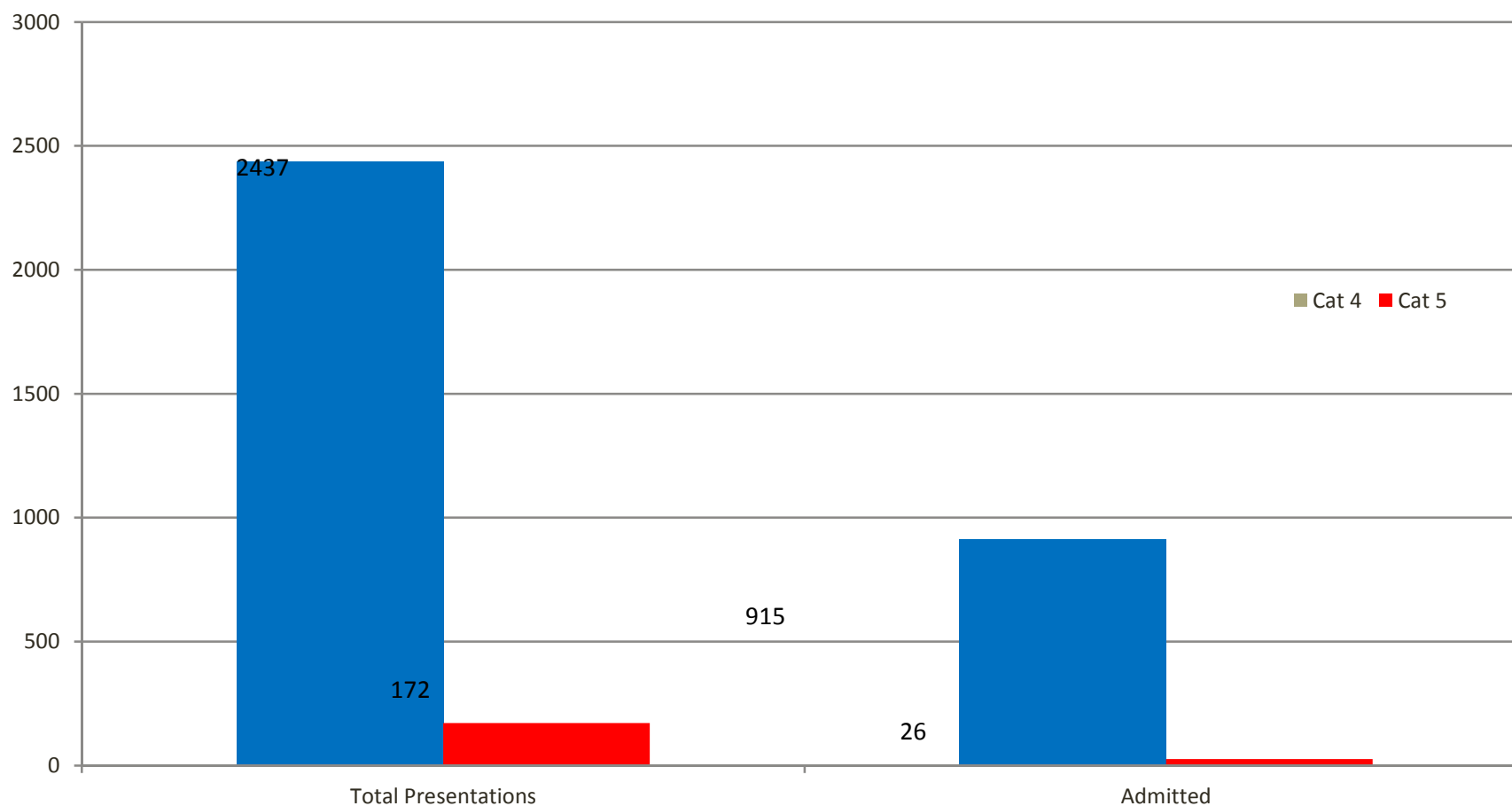


Shared Data - Ambulance Responses

- NSW Ambulance responded to 11,963 P1-3 cases in the Macarthur area from July – Dec 2014
- Of those 11,963 a total of 9,259 patients were transported to hospital - 7,770 of which were to Campbelltown ED
- Of the 7,770 patients transported to Campbelltown ED 3,352 (43%) were triaged as Category 4 or 5



Shared Data – Campbelltown Hospital - NSW Ambulance Transports – Triage Cat 4 & 5 patient vs Admissions July – Dec 2014





NSW Ambulance

excellence in care

Planning - Consultation & Engagement

- Campbelltown Hospital Executive & ED staff
- SWSLHD Executive
- South West Medicare Local
- Steering Committee and Working Group



NSW Ambulance

excellence in care

The Next Steps – Step 1

- Clinical Governance Structure
- Reporting
- Program Evaluation methodology



NSW Ambulance

excellence in care

The Next Steps – Step 2

- Training of Ambulance staff
- Communication strategy rollout
- “Go live” date



NSW Ambulance

excellence in care

Challenges

- Project momentum – Christmas period
- Management of competing priorities – on all sides



NSW Ambulance

excellence in care

Questions?