

# NSW Health Influenza Surveillance Report

---

**Week 34: 22 August to 28 August 2016**

## Summary:

- **Seasonal influenza activity rose only slightly this week and is currently following a similar course to last year (2015). The season is likely to be at or near its peak activity.**
- **Influenza A(H3N2) remains the dominant circulating influenza strain.**

## In this reporting week:

- [Hospital Surveillance](#) – the rate of influenza like illness (ILI) presentations to selected emergency departments increased and remains well above the seasonal threshold.
- [Laboratory surveillance](#) – the total number of influenza isolations rose slightly this week with the proportion of respiratory samples positive for influenza 30.9%.
- [Community surveillance](#) – influenza notifications were increased across most local health districts (LHD). General Practice and community-based surveillance systems suggest increased ILI activity. Influenza activity continues to impact heavily on the aged care sector with 21 new respiratory outbreaks reported this week in residential aged care facilities.
- [National and international influenza surveillance](#) – the most recent national reports suggest influenza activity at the national level continued to increase, with most regions of Australia reporting widespread and increasing activity. Current influenza strains are well matched to the 2016 influenza vaccines.

## About this report:

Health Protection NSW collects and analyses surveillance data on influenza and other respiratory viruses. Surveillance reports are produced weekly commencing in May, and continuing until the end of the influenza season. Monthly reports are produced throughout the rest of the year.

The influenza surveillance reports include data from a range of surveillance systems and sources concerned with Emergency Department illness surveillance, laboratory (virological) surveillance, and community illness surveillance. Pneumonia and influenza mortality data are also monitored and reported upon periodically.

For further information on influenza see the [NSW Health Influenza website](#).

# 1. Hospital Surveillance

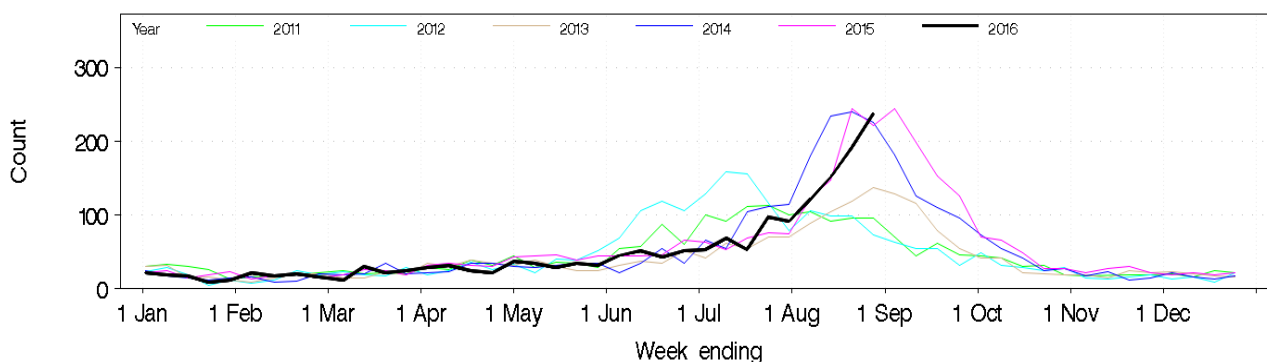
## NSW emergency department (ED) presentations for influenza-like illness (ILI) and other respiratory illnesses

Source: PHREDSS [1]

For the week ending 28 August 2016:

- ILI presentations [2] increased this week and may increase further over the coming weeks. Presentations were significantly above the five-year mean this week in people aged 65 years and over and in the Central Coast LHD and at the Children's Hospital at Westmead (Figure 1 and Table 1).
- The index of increase for ILI presentations was 59.8 on 28 August, a slight increase on the previous week (54.3).
- The proportion of ILI presentations to all ED presentations was high at 5.6 per 1000 presentations, higher than the previous week (4.3).
- ED presentations for pneumonia [3] decreased and remained within the usual range for this time of year (Table 1.)
- ILI presentations which resulted in admission increased and were significantly above the five-year mean this week in all people aged 17 years and over and in the South Eastern Sydney, Northern NSW, Central Coast LHDs and at Campbelltown Hospital (Figure 2 and Table 1). Admissions for pneumonia however decreased and were within the usual range for this time of year (Table 1). Presentations which resulted in admissions to critical care wards also decreased and were within the usual range for this time of year (Figure 3 and Table 1).
- Bronchiolitis presentations increased this week but were within the usual range for this time of year (Table 1).
- The category combining all respiratory, fever and unspecified infection presentations decreased and were within the usual range for this time of year (Table 1).

**Figure 1:** Total weekly counts of ED visits for influenza-like illness, all ages, from 1 January – 28 August 2016 (black line), compared with each of the 5 previous years (coloured lines).

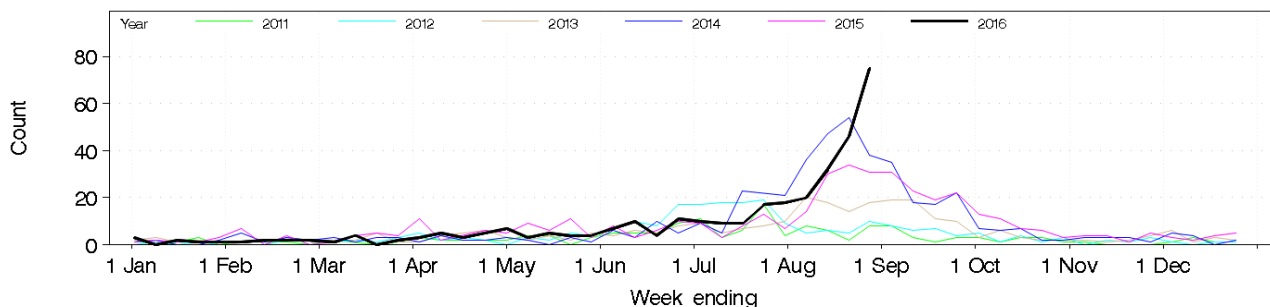


[1] NSW Health Public Health Rapid, Emergency Disease and Syndromic Surveillance system. Centre for Epidemiology and Evidence, NSW Ministry of Health. Comparisons are made with data for the preceding five years. Recent counts are subject to change. As of 31 March 2016, data from 60 NSW emergency departments are included representing approximately 82% of ED visits in the 2015-16 financial year. The coverage of rural EDs is lower than metropolitan EDs. Data shown represents unplanned presentations to hospital EDs.

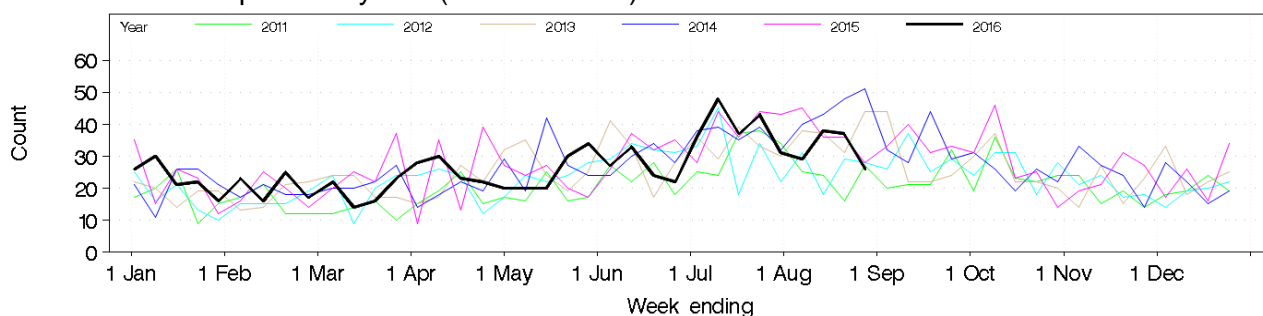
[2] The ED 'ILI' syndrome includes provisional diagnoses selected by a clinician of 'influenza-like illness' or 'influenza' (including 'pneumonia with influenza'), avian and other new influenza viruses.

[3] The ED 'Pneumonia' syndrome includes provisional diagnoses selected by a clinician of 'viral, bacterial, atypical or unspecified pneumonia', 'SARS', or 'legionnaire's disease'. It excludes the diagnosis 'pneumonia with influenza'.

**Figure 2:** Total weekly counts of ED presentations for influenza-like-illness that were admitted, all ages, from 1 January – 28 August 2016 (black line), compared with each of the 5 previous years (coloured lines).



**Figure 3** Total weekly counts of ED presentations for pneumonia or influenza-like illness and admitted to a critical care ward, all ages, from January – 28 August 2016 (black line), compared with each of the 5 previous years (coloured lines).



**Table 1:** Weekly ED and Ambulance Respiratory Activity Summary for the week ending 28 August 2016. Includes data from 60 NSW EDs and the NSW Ambulance Division [4].

Data source	Diagnosis or problem category	Trend since last week	Comparison with usual range for time of year*	Statistically significant age groups (if any)	Locations with weekly counts significantly above the 5 year mean	Severity indicators** with weekly counts significantly above the 5 year mean	Comment
ED presentations, 60 NSW hospitals	Influenza-like illness (ILI)	Increased	Above	65 years and over	Central Coast LHD The Children's Hospital at Westmead	Admissions	Daily index of increase = 59.8 (seasonal threshold crossed on 26 June 2016)
	ILI Admissions	Increased	Above	17-34 years 35-64 years 65 years and over	South Eastern Sydney LHD Northern NSW Central Coast LHD Campbelltown Hospital	Ambulance arrivals	
	Pneumonia	Decreased	Usual				
	Pneumonia and ILI admissions	Increased	Usual				
	Pneumonia and ILI critical care admissions	Decreased	Usual				
	Asthma	Steady	Usual		Manly District Hospital		
	Bronchiolitis	Decreased	Usual				Bronchiolitis is a disease of infants. Daily index of increase = 20.5
	Breathing problems	Decreased	Usual	0-4 years	Hornsby and Ku-Ring-Gai Hospital The Children's Hospital at Westmead		
	All respiratory illness, fever and unspecified infections	Decreased	Usual				

[4] Notes for Table 1: \*The usual range for the time of year is the range of weekly counts for the same week in the previous five years for ED presentations. Key: Non-bold and green =usual range; Non-bold and orange= above usual range, but not significantly; Bold and red = statistically greater than usual range. Counts are statistically significant if they are at least five standard deviations above the five-year mean for ED presentations; the ILI 'daily index of increase' is statistically significant above a threshold of 15. \*\*Severity indicators include: Admission to a ward or critical care service; Triage category 1; Ambulance arrival and Death in ED.

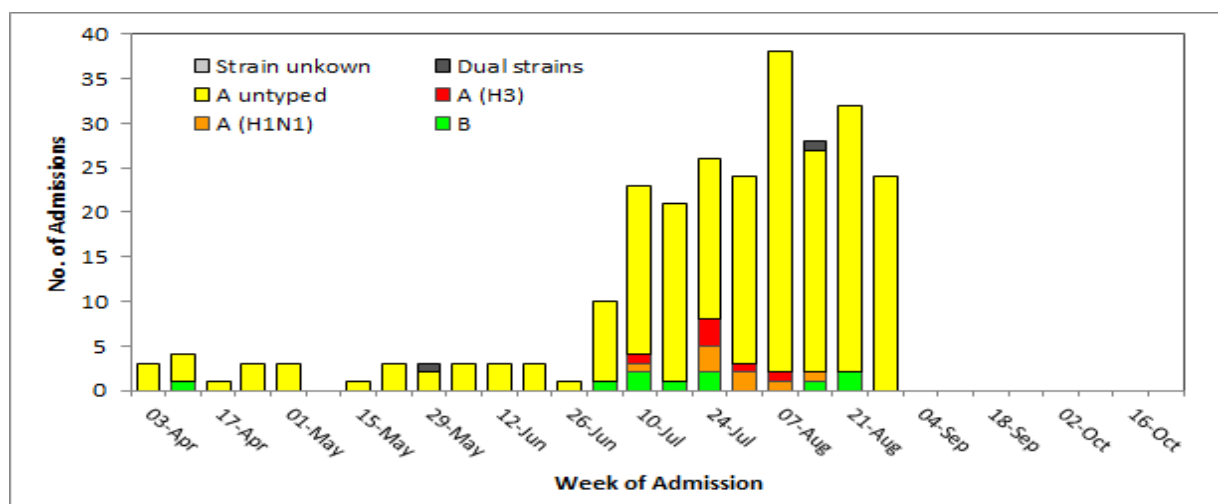
## FluCAN (The Influenza Complications Alert Network)

In 2009, the [FluCAN](#) surveillance system was created to be a rapid alert system for severe respiratory illness requiring hospitalisation. Data is provided on patients admitted with influenza confirmed by polymerase chain reaction (PCR) testing.

In NSW, three hospitals participate in providing weekly FluCAN data: Westmead Hospital, John Hunter Hospital and the Children's Hospital at Westmead.

- During week 34 there were 23 influenza admissions (17 adult and 7 children) in NSW sentinel hospitals (Figure 5).
- Since 1 April 2016, there have been 257 hospital admissions reported for influenza; 245 with influenza A and 10 with influenza B and two with co-infections (Figure 4).
- Of these admissions, 80 were paediatric (<16 years of age) cases and 177 were in adults. Sixteen cases were admitted to ICU/HDU.

**Figure 4:** FluCAN – Number of confirmed influenza hospital admissions in NSW, 03 April – 28 August, 2016.



## 2. Laboratory Surveillance

For the week ending 28 August 2016 the number and proportion of respiratory specimens reported by NSW sentinel laboratories [5] which tested positive for influenza A or influenza B increased slightly and may have reached the peak of activity for this season (Table 2).

A total of 11,728 tests for respiratory viruses were reported this week with 30.9% testing positive for influenza viruses, marginally up from 11,070 tests and a 30.1% influenza-positive rate in the previous week. Influenza A(H3N2) is the dominant circulating influenza strain. Influenza B activity remains at a low level but has increased slightly which is usual towards the end of the influenza season (Figures 5 and 6).

Influenza was the leading respiratory virus reported, with other viruses circulating at usual but increasing levels for this time of year (Table 2).

[5]: Preliminary laboratory data is provided by participating sentinel laboratories on a weekly basis and are subject to change. Point-of-care test results have been included since August 2012 but serological diagnoses are not included.

Preliminary laboratory data is provided by participating sentinel laboratories on a weekly basis and are subject to change. Point-of-care test results have been included since August 2012 but serological diagnoses are not included.

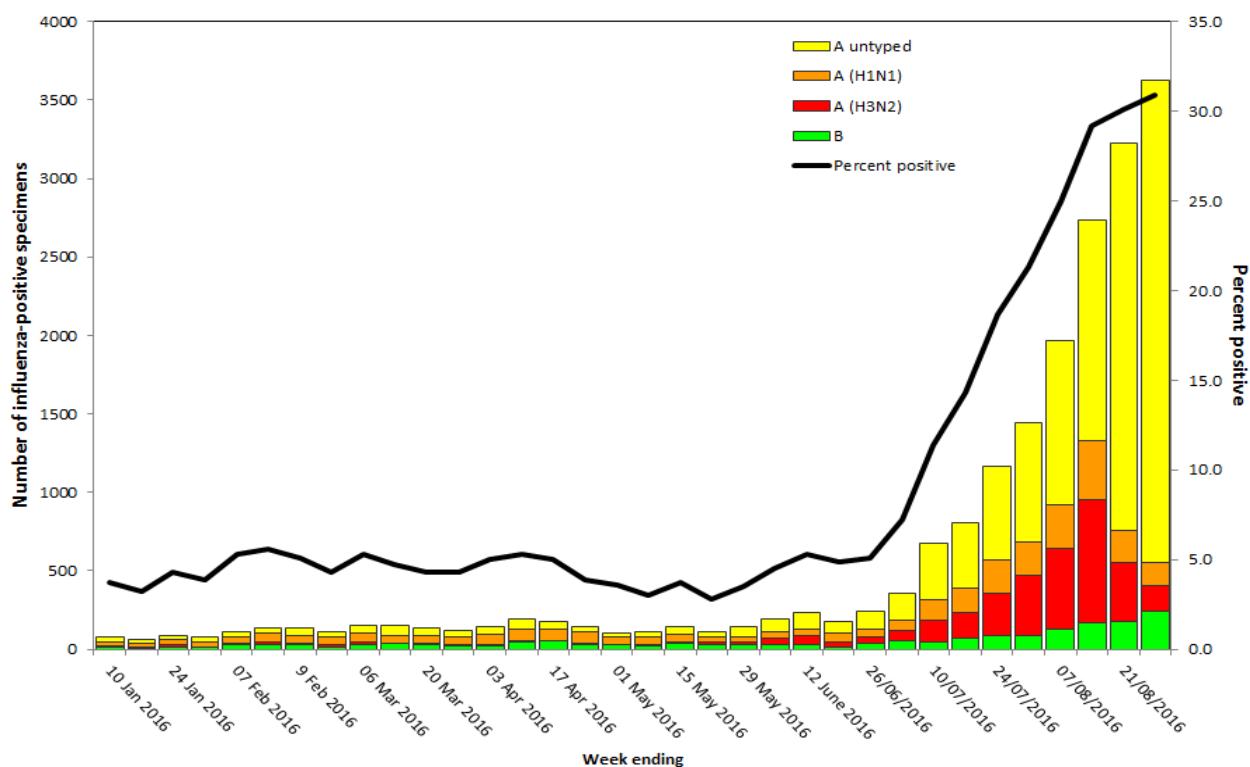
**Participating sentinel laboratories:** Pathology North (Hunter, Royal North Shore Hospital), Pathology West (Nepean, Westmead), South Eastern Area Laboratory Services, Sydney South West Pathology Service (Liverpool, Royal Prince Alfred Hospital), The Children's Hospital at Westmead, Australian Clinical Labs, Douglas Hanly Moir Pathology, Laverty Pathology, Medlab, SydPath, VDRLab to June 2016.

**Table 2:** Summary of testing for influenza and other respiratory viruses at NSW laboratories, 1 January to 28 August 2016.

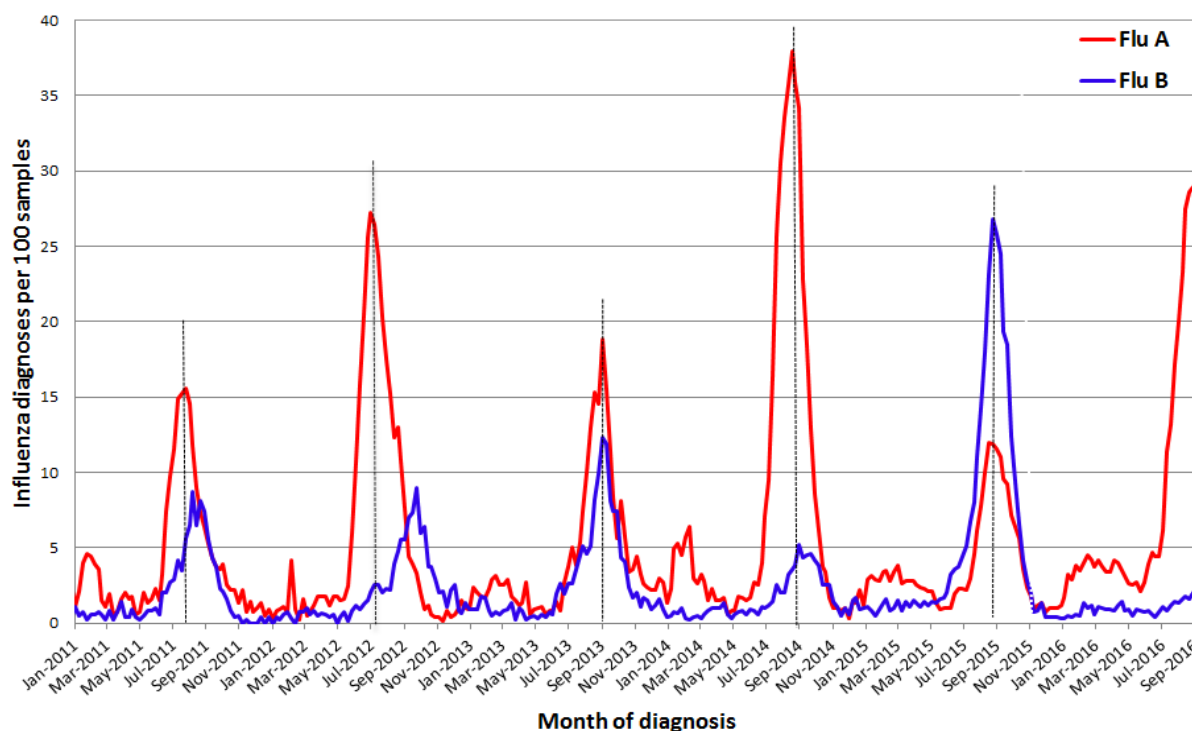
Month ending	Total Tests	TEST RESULTS														
		Influenza A						Influenza B		Adeno	Parainf 1, 2 & 3	RSV	Rhino	HMPV **	Entero	
		Total		H3N2		H1N1 pdm09		A (Not typed)								Total
Total	(%)	Total	(%A)	Total	(%A)	Total	(%A)	Total	(%)							
31/01/2016	8079	270 (3.3%)	45 (16.7%)	114 (42.2%)	111 (41.1%)	38 (0.5%)					202	179	202	941	73	96
28/02/2016	9810	397 (4.0%)	54 (13.6%)	199 (50.1%)	144 (36.3%)	96 (1.0%)					208	244	323	1484	80	150
03/04/2016*	14699	555 (3.8%)	32 (5.8%)	271 (48.8%)	248 (44.7%)	138 (0.9%)					282	412	937	1862	68	188
01/05/2016	13614	457 (3.4%)	16 (3.5%)	268 (58.6%)	173 (37.9%)	152 (1.1%)					271	371	1189	1470	71	128
29/05/2016	15760	398 (2.5%)	57 (14.3%)	157 (39.4%)	184 (46.2%)	115 (0.7%)					350	358	1488	2211	111	138
03/07/2016*	22487	1065 (4.7%)	227 (21.3%)	269 (25.3%)	569 (53.4%)	167 (0.7%)					707	636	2626	2866	300	420
31/07/2016	24176	3796 (15.7%)	1021 (26.9%)	722 (19.0%)	2052 (54.1%)	291 (1.2%)					753	527	2339	2240	484	404
Week ending																
07/08/2016	7882	1840 (23.3%)	516 (28.0%)	275 (14.9%)	1049 (57.0%)	128 (1.6%)					215	113	541	547	149	73
14/08/2016	9361	2568 (27.4%)	789 (30.7%)	375 (14.6%)	1404 (54.7%)	165 (1.8%)					233	170	624	673	239	100
21/08/2016	11060	3155 (28.5%)	379 (12.0%)	207 (6.6%)	2469 (78.3%)	173 (1.6%)					301	209	600	711	306	115
28/08/2016	11728	3390 (28.9%)	168 (5.0%)	145 (4.3%)	3077 (90.8%)	239 (2.0%)					365	229	582	808	352	110

**Notes:** \* Five-week reporting period. \*\* Human metapneumovirus

**Figure 5:** Weekly influenza positive test results by type and sub-type reported by NSW sentinel laboratories, 1 January to 28 August 2016.



**Figure 6:** Percentage of laboratory tests positive for influenza A and influenza B by week, 1 January 2010 – 28 August 2016, New South Wales.



### 3. Community Surveillance

#### Influenza notifications by Local Health District (LHD)

In the week ending 28 August there were 3,098 notifications of influenza confirmed by polymerase chain reaction (PCR) testing, higher than the 2,930 notifications in the previous week.

Population rates were highest in the Northern Sydney and Western Sydney Local Health Districts (Table 3). Notifications continued to increase in most districts.

**Table 3:** Weekly notifications of laboratory-confirmed influenza by local health district.

Local Health District	Week ending 28 Aug 2016		Weekly average (previous 4 weeks)	
	Number of notifications	Rate per 100 000 population	Number of notifications	Rate per 100 000 population
Central Coast	95	28.1	51	15.08
Far West	1	3.28	1	3.28
Hunter New England	268	29.24	161	17.51
Illawarra Shoalhaven	151	37.49	71	17.57
Mid North Coast	48	22.07	27	12.53
Murrumbidgee	106	44.39	34	14.24
Nepean Blue Mountains	158	42.16	127	33.95
Northern NSW	86	28.64	65	21.73
Northern Sydney	611	67.38	412	45.41
South Eastern Sydney	394	43.6	282	31.2
South Western Sydney	359	37.16	233	24.14
Southern NSW	40	19.18	38	18.34
Sydney	207	32.93	172	27.29
Western NSW	34	12.26	22	7.93
Western Sydney	540	57.04	373	39.42

**Notes:** \* All data are preliminary and may change as more notifications are received. Excludes notifications based on serology.

## Influenza outbreaks in institutions

There were 24 new respiratory outbreaks reported this week; all but one were due to influenza A with the majority due to influenza A (H3N2). All outbreaks this week were in residential aged care facilities except for two outbreaks on hospital wards and one in a military facility (Table 4).

In the year to date there have been 142 laboratory confirmed influenza outbreaks in institutions reported to NSW public health units (Table 4): 136 have been due to influenza A, four were influenza B, and two were combined influenza A and B outbreaks. At least 1926 residents were reported to have had ILI symptoms and 203 required hospitalisation. Ninety-nine deaths in residents linked to these outbreaks have been reported, all of whom were noted to have other significant co-morbidities.

People in older age-groups are at higher risk of infection from influenza A(H3N2) strains than from the influenza A(H1N1) strain. The influenza A(H3N2) strain predominated in 2012 and 2014. In 2015, influenza B was the predominant strain, and was also associated with an increase in influenza outbreaks in institutions, particularly residential aged care facilities (Table 4).

**Table 4:** Reported influenza outbreaks in NSW institutions, January 2010 to 21 August 2016.

Year	2010	2011	2012	2013	2014	2015	2016*
Number of outbreaks	2	4	39	12	120	103	142

**Notes:** \* Year to date.

## Electronic General Practice Surveillance (eGPS)

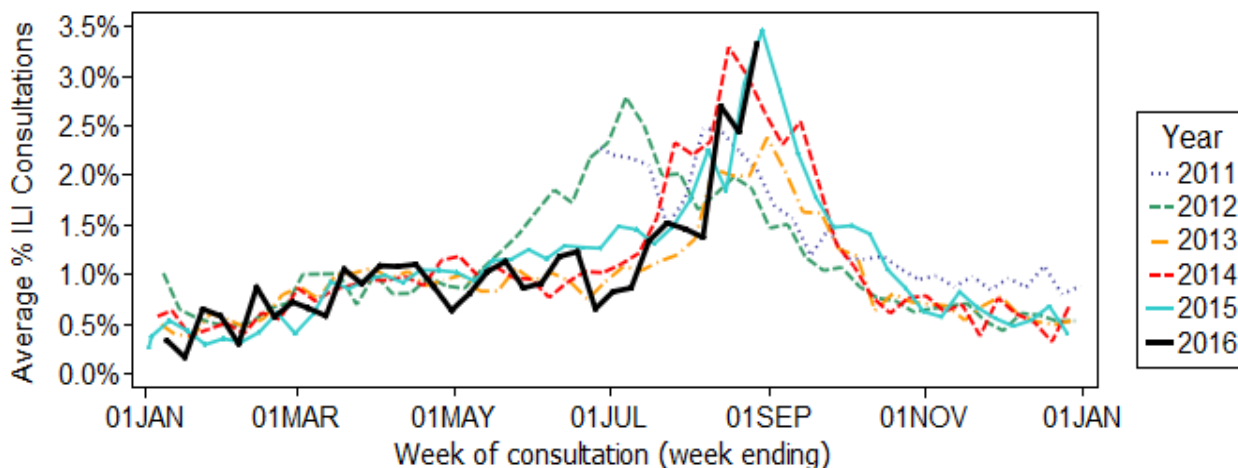
eGPS is a primary care influenza surveillance system involving sentinel general practices within three NSW Local Health Districts (LHD): Northern Sydney (NS), South Eastern Sydney (SES) and Illawarra Shoalhaven (IS). The system monitors patient consultations for influenza-like illness (ILI) as an indicator of influenza activity. Consultations for ILI are identified each week by an automatic search of electronic records for validated combinations of ILI terms rather than diagnosis codes.

Data generated from eGPS should be interpreted with caution as they are not representative of all practices within the participating LHDs or across NSW.

In Week 34:

- there were 6 surveillance reports received from eGPS sentinel practices in NSW;
- the average rate of ILI patient consultations increased to 3.3% (range 1.3 – 5.2%), higher than 2.4% in the previous week (Figure 7).

**Figure 7.** Average rate of influenza-like presentations to sentinel general practices by week of consultation 2011-2016 (year to date).



## The Australian Sentinel Practices Research Network (ASPREN)

ASPREN is a network of sentinel general practitioners (GPs) run through the Royal Australian College of General Practitioners and the University of Adelaide which has collected de-identified information on influenza-like illness (ILI) and other conditions seen in general practice since 1991.

Participating GPs in the program report on the proportion of patients presenting with an ILI. The number of GPs participating on a weekly basis may vary.

In week 34 there were 42 ASPREN reports received from NSW GPs. The overall consultation rate for ILI was moderate at 2.5%, down from the previous week (3.7%).

For further information please see the [ASPREN](#) website.

## FluTracking.net

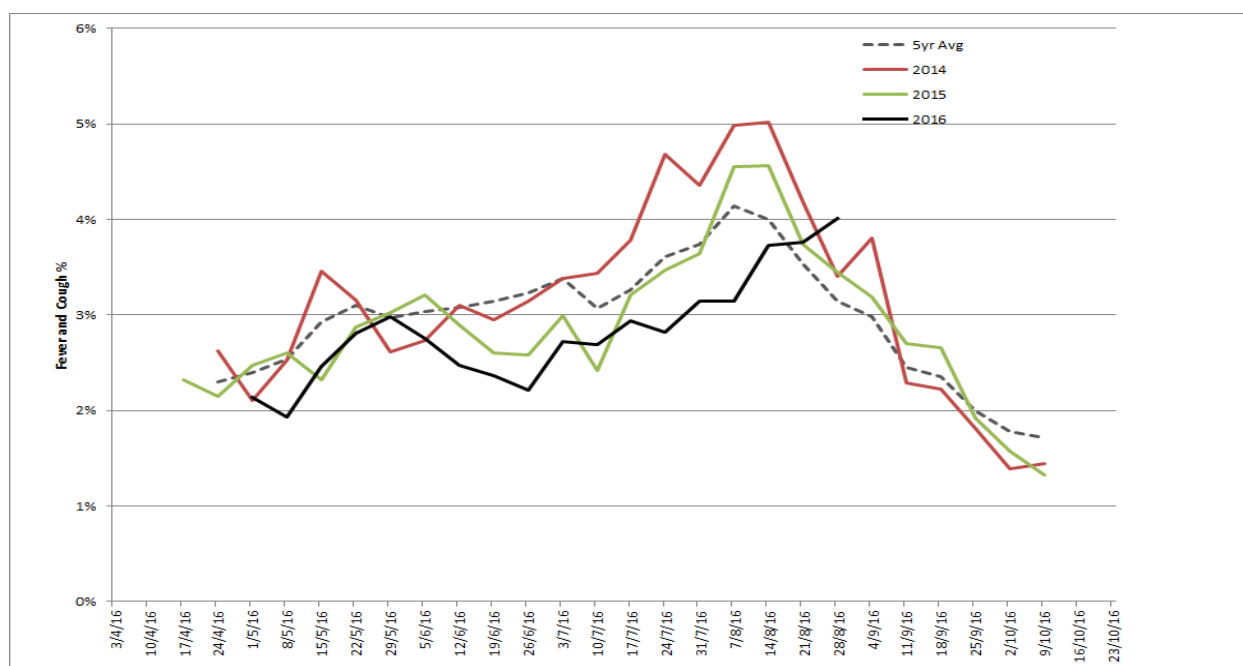
FluTracking.net is an online health surveillance system to detect epidemics of influenza. FluTracking is a project of the University of Newcastle, the Hunter New England Local Health District and the Hunter Medical Research Institute.

Participants complete a simple online weekly survey which is used to generate data on the rate of ILI symptoms in communities.

In week 34 FluTracking received reports for 7510 people in NSW with the following results:

- 4.0% of respondents reported fever and cough, higher than the previous week (3.8%) (Figure 8).
- 2.6% of respondents reported fever, cough and absence from normal duties, similar to the previous week (2.7%) (data not shown).

**Figure 8:** FluTracking – weekly influenza-like illness reporting rate, NSW, 2011 – 2016.



For further information please see the [FluTracking](#) website.

## 4. National and International Influenza Surveillance

### National Influenza Surveillance

In the *Australian Surveillance Report No.6*, with data up to 19 August 2016, influenza activity at the national level continued to increase, with most regions of Australia reporting widespread and increasing activity. Of note:



- Influenza-like illness (ILI) also continued to increase nationally. More than half of all patients presenting to sentinel general practitioners with ILI and tested were positive for influenza this fortnight.
- Influenza A(H3N2) continued to be the dominant circulating influenza virus nationally in recent weeks, noting jurisdictional variation. Notifications of influenza B increased slightly in recent weeks, but remained at low levels overall.
- Notification rates this year to date have been highest in adults aged 85 years or older, with a secondary peak in the very young, aged less than 5 years. This is consistent with older age groups being typically more susceptible to influenza A(H3N2) than the other circulating strains.
- Clinical severity for the season to date, as measured through the proportion of patients admitted directly to ICU and deaths attributed to pneumonia or influenza, is low to moderate.
- To date, the seasonal influenza vaccines appear to be a good match for circulating virus strains.

Follow the link for the [Australian Influenza Surveillance Reports](#) which provide the latest information on national influenza activity.

## Global Influenza Update

The latest [WHO global update on 22 August 2016](#) provides data up to 7 August. Influenza activity varied in countries of temperate South America and increased steadily in the last few weeks in South Africa, increased slowly but remained still low overall in most of Oceania. Influenza activity in the temperate zone of the northern hemisphere was at inter-seasonal levels. Follow the link for the [WHO influenza surveillance reports](#).

## Avian Influenza Update:

### Human infections with avian influenza viruses

The monthly WHO risk assessment of human infections with avian and swine influenza viruses (see [Influenza at the human-animal interface](#)) was published on 19 July 2016. This report provides updated information on human cases of infection with animal influenza viruses and outbreaks among animals caused by novel influenza strains.

Of note:

- Since the previous update, new human infections with A(H5N1), A(H7N9), A(H9N2) and A(H1N2)v viruses were reported.
- The overall public health risk from currently known influenza viruses at the human-animal interface has not changed. Further human infections with viruses of animal origin can be expected, but the likelihood of sustained human-to-human transmission remains low.

Other sources of information on avian influenza and the risk of human infection include:

- US CDC [Avian influenza](#)
- European CDC (ECDC) [Avian influenza](#)
- Public Health Agency of Canada [Avian influenza H7N9](#).

## 5. Composition of 2016 Australian influenza vaccines

The National Immunisation Program (NIP) used quadrivalent influenza vaccines in 2016 for the first time. The four strains chosen are based on the recommendations of the WHO Consultation on the Composition of Influenza Vaccines for the 2016 Southern Hemisphere. Following the Consultation, WHO announced its recommendations for the composition of trivalent and quadrivalent vaccines for use in the 2016 influenza season (southern hemisphere winter).

For trivalent vaccines:

- an A/California/7/2009 (H1N1)pdm09-like virus;
- an A/Hong Kong/4801/2014 (H3N2)-like virus;
- a B/Brisbane/60/2008-like virus (Victoria lineage).

For quadrivalent vaccines it was recommended that a second influenza B virus be added:

- a B/Phuket/3073/2013-like virus (Yamagata lineage).

Of note, the trivalent vaccine recommendations included strain changes for both the A(H3N2) and B components. The recommended A(H1N1) strain has remained unchanged since 2010. More details about the most recent influenza vaccine recommendations can be found at:

[http://www.who.int/influenza/vaccines/virus/recommendations/2016\\_south/en/](http://www.who.int/influenza/vaccines/virus/recommendations/2016_south/en/).

The WHO consultation on the composition of influenza vaccines for the Northern Hemisphere 2016-2017 was held in February 2016. The recommended composition was unchanged from the composition recommended for the 216 Southern Hemisphere vaccines (above). For information about the Northern Hemisphere vaccine recommendations can be found at:

[http://www.who.int/influenza/vaccines/virus/recommendations/2016\\_17\\_north/en/](http://www.who.int/influenza/vaccines/virus/recommendations/2016_17_north/en/)