

**Health Protection NSW
Communicable Diseases Branch**

**Sexually Transmitted Infections Notification Data
3rd Quarterly Report 2013**

Contents

1. Summary & Data Caveats.....	3
2. Chlamydia.....	4
Graph 2.1: Notified cases and rates of chlamydia for NSW by quarter.....	4
Table 2.1: Notified cases and rates of chlamydia for NSW by quarter.....	5
Graph 2.2: Notified cases of chlamydia by sex and quarter.....	6
Table 2.2: Notified cases of chlamydia by sex and quarter.....	7
Graph 2.3: Notified cases of chlamydia by age group and quarter.....	8
Table 2.3: Notified cases of chlamydia by age group and quarter.....	9
Graph 2.4: Notified cases of chlamydia by metropolitan LHD and quarter.....	10
Table 2.4: Notified cases of chlamydia by metropolitan LHD and quarter.....	11
Graph 2.5: Notified cases of chlamydia by non-metropolitan LHD and quarter.....	12
Table 2.5: Notified cases of chlamydia by non-metropolitan LHD and quarter.....	13
Graph 2.6: Notified rates of chlamydia by metropolitan LHD and year.....	14
Table 2.6: Notified rates of chlamydia by metropolitan LHD and year.....	14
Graph 2.7: Notified rates of chlamydia by non-metropolitan LHD and year.....	15
Table 2.7: Notified rates of chlamydia by non-metropolitan LHD and year.....	16
3. Gonorrhoea.....	17
Graph 3.1: Notified cases and rates of gonorrhoea for NSW by quarter.....	17
Table 3.1: Notified cases and rates of gonorrhoea for NSW by quarter.....	18
Graph 3.2: Notified cases of gonorrhoea by sex and quarter.....	19
Table 3.2: Notified cases of gonorrhoea by sex and quarter.....	20
Graph 3.3: Notified cases of gonorrhoea by age group and quarter.....	21
Table 3.3: Notified cases of gonorrhoea by age group and quarter.....	22
Graph 3.4: Notified cases of gonorrhoea by metropolitan LHD and quarter.....	23
Table 3.4: Notified cases of gonorrhoea by metropolitan LHD and quarter.....	24
Table 3.5: Notified cases of gonorrhoea by non-metropolitan LHD and quarter.....	26
Graph 3.6: Notified rates of gonorrhoea by metropolitan LHD and year.....	27
Table 3.6: Notified rates of gonorrhoea by metropolitan LHD and year.....	27
Graph 3.7: Notified rates of gonorrhoea by non-metropolitan LHD and year.....	28
Table 3.7: Notified rates of gonorrhoea by non-metropolitan LHD and year.....	29
4. Syphilis.....	30
Graph 4.1: Notified cases and rates of infectious syphilis for NSW by quarter.....	30
Table 4.1: Notified cases and rates of infectious syphilis for NSW by quarter.....	31
Graph 4.2: Notified cases of infectious syphilis by sex and quarter.....	32
Table 4.2: Notified cases of infectious syphilis by sex and quarter.....	33
Graph 4.3: Notified cases of infectious syphilis by age group and quarter.....	34
Table 4.3: Notified cases of infectious syphilis by age group and quarter.....	35
Graph 4.4: Notified cases of infectious syphilis by metropolitan LHD and quarter.....	36
Table 4.4: Notified cases of infectious syphilis by metropolitan LHD and quarter.....	37
Graph 4.5: Notified cases of infectious syphilis by non-metropolitan LHD and quarter.....	38
Table 4.5: Notified cases of infectious syphilis by non-metropolitan LHD and quarter.....	39
Graph 4.6: Notified rates of infectious syphilis by metropolitan LHD and year.....	40
Table 4.6: Notified rates of infectious syphilis by metropolitan LHD and year.....	40
Graph 4.7: Notified rates of infectious syphilis by non-metropolitan LHD and year.....	41
Table 4.7: Notified rates of infectious syphilis by non-metropolitan LHD and year.....	42
5. Lymphogranuloma venereum (LGV).....	43
Graph 5.1: Notified cases of LGV for NSW by quarter.....	43

1. Summary & Data Caveats

This report includes notification data for four notifiable sexually transmitted infections (STIs): chlamydia, gonorrhoea, infectious syphilis and lymphogranuloma venereum (LGV), in NSW residents for the period 1 July – 30 September 2013. Information on HIV is reported separately and is available on the NSW Health website (<http://www.health.nsw.gov.au/endinghiv/Pages/tools-and-data.aspx>)

STI data are extracted from the New South Wales Notifiable Conditions Information Management System (NCIMS). Data entry may be completed several weeks after initial notification. Notification of a case some time after diagnosis, whilst uncommon, does occur.

During this quarter, 4993 cases of chlamydia were reported. Chlamydia notifications show an increasing trend from 2007 to 2012, however have plateaued during recent quarters. Chlamydia notifications remain more common in females and in older teenagers/young adults. Chlamydia notification rates are dependent to an extent on testing rates. Quarterly and annual chlamydia test rates in NSW are published in the Communicable Diseases Report of the *NSW Public Health Bulletin*, available at: <http://www.publish.csiro.au/nid/226.htm>

Gonorrhoea notifications and rates increased from late 2010 to mid-2012, and have since plateaued with 1042 cases notified in this quarter. Gonorrhoea is predominantly notified in males, notably those aged 25 – 35 years, and is thought to be mainly associated with male to male sex. Most cases are notified in Sydney and South East Sydney Local Health Districts.

Infectious syphilis notifications have also shown an increasing trend and 150 cases were notified this quarter. The predominance of infection in adult males living in Sydney and South East Sydney Local Health Districts is more pronounced than for gonorrhoea.

Five cases of LGV were reported in this quarter, all in men. A small outbreak earlier in the year appears to be resolving.

The *NSW Sexually Transmissible Infections Plan 2014-2018* is currently under development and is due for release in 2014.

All data presented in this report is based on the onset date of illness. However, for the large majority of cases, date of onset is not reported and so the onset date field defaults to either clinical specimen collection date, laboratory report date or notification date, whichever is the earlier.

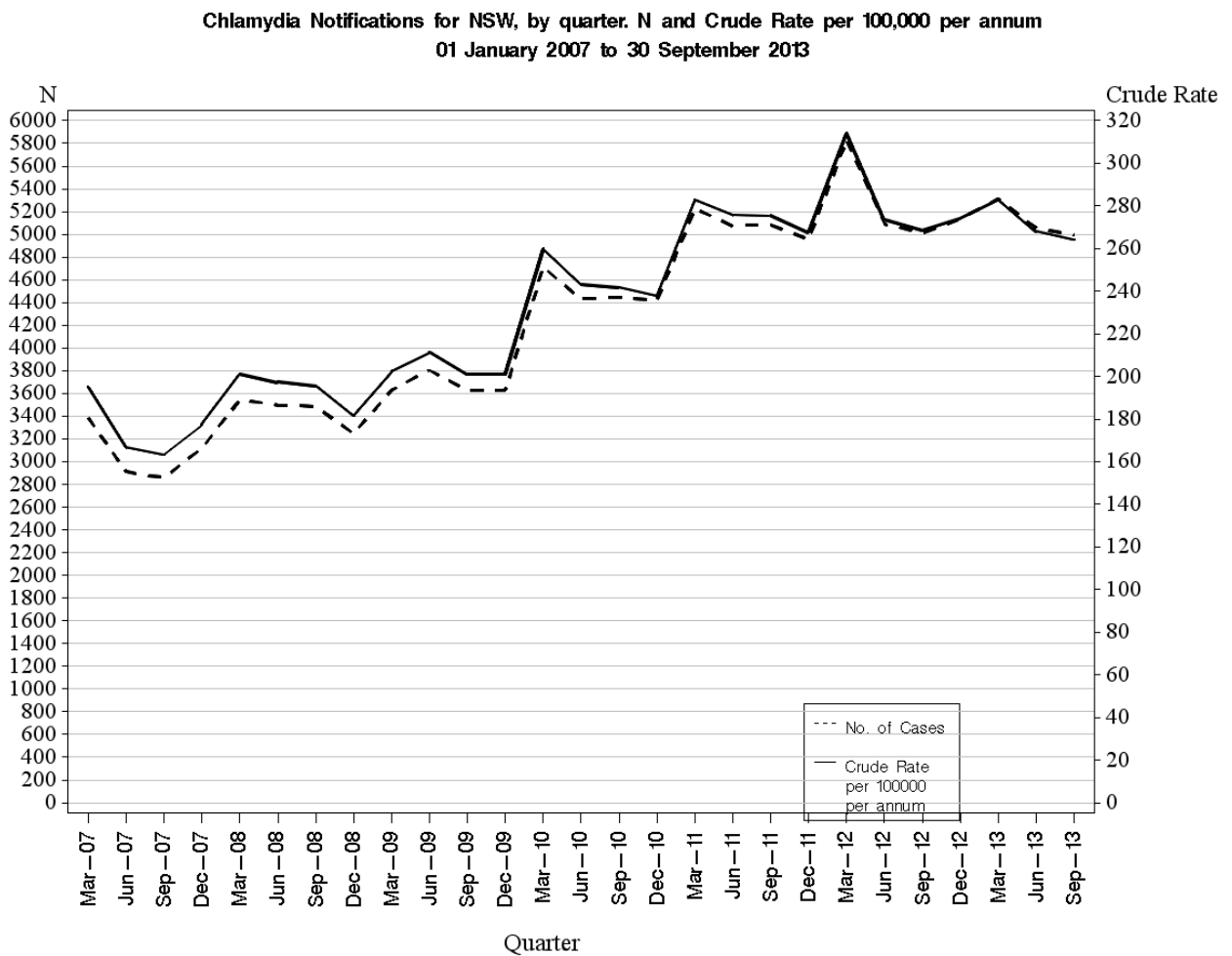
Data for this report were extracted on 19 December 2013. Notifications from Justice Health are excluded.

2. Chlamydia

Chlamydia trachomatis infection of any site is notified by laboratories. This report presents cases where the condition has been classified as ‘chlamydia’ on NCIMS, and excludes those that have been classified as ‘chlamydia – congenital’. A confirmed case of chlamydia requires isolation of *Chlamydia trachomatis* or detection of *C. trachomatis* through NAT, immunofluorescence, EIA (with blocking antibody) or culture.

Chlamydia infections are not routinely followed up by the Public Health Units so detailed information (eg Aboriginality, exposure) is not generally available

Graph 2.1: Notified cases and rates of chlamydia for NSW by quarter

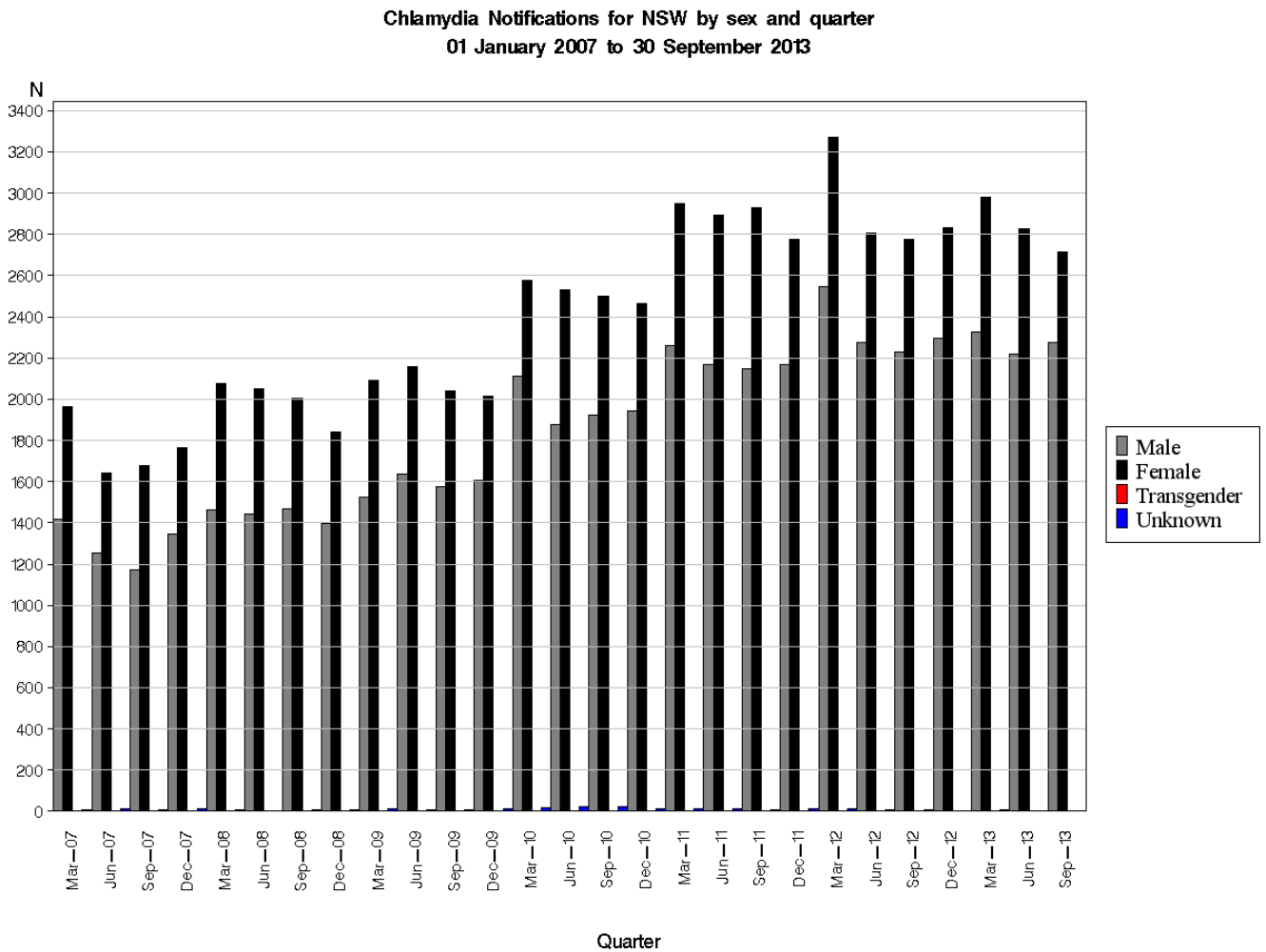


Note: Became notifiable in Aug 1998
Source: NCIMS (SAPHaRI)

Table 2.1: Notified cases and rates of chlamydia for NSW by quarter

Year	Quarter	No. of notifications	Crude Rate per 100,000 per annum
2007	March	3389	195
	June	2910	167
	September	2860	163
	December	3120	178
2008	March	3547	201
	June	3498	197
	September	3484	196
	December	3247	182
2009	March	3630	202
	June	3803	211
	September	3624	201
	December	3632	201
2010	March	4711	260
	June	4430	243
	September	4447	242
	December	4416	238
2011	March	5226	283
	June	5075	276
	September	5083	275
	December	4954	268
2012	March	5831	314
	June	5092	274
	September	5014	269
	December	5134	274
2013	March	5314	283
	June	5053	268
	September	4994	264
	December		

Graph 2.2: Notified cases of chlamydia by sex and quarter

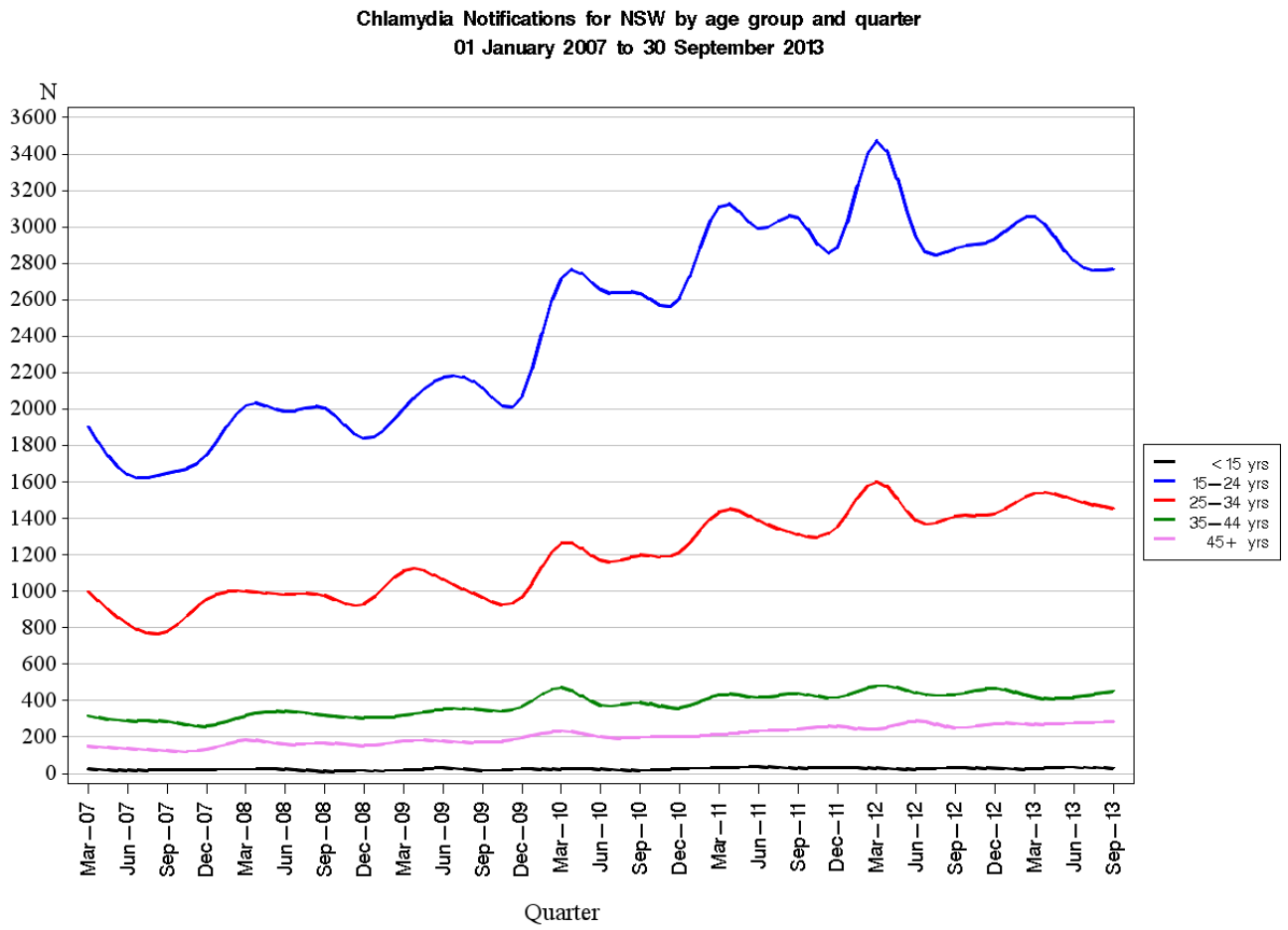


Note: Became notifiable in Aug 1998
Source: NCIMS (SAPHaRI)

Table 2.2: Notified cases of chlamydia by sex and quarter

Year	Quarter	Females	Males	Transgender	Unknown
2007	March	1966	1418	0	5
	June	1642	1254	0	14
	September	1679	1174	0	7
	December	1764	1346	0	10
2008	March	2074	1464	1	8
	June	2052	1444	0	2
	September	2007	1469	1	7
	December	1840	1399	1	7
2009	March	2094	1525	1	10
	June	2160	1635	0	8
	September	2041	1575	0	8
	December	2015	1607	0	10
2010	March	2579	2112	0	20
	June	2533	1875	0	22
	September	2500	1923	0	24
	December	2463	1942	0	11
2011	March	2952	2259	2	13
	June	2894	2170	0	11
	September	2927	2150	1	5
	December	2776	2168	0	10
2012	March	3271	2546	1	13
	June	2809	2276	0	7
	September	2776	2231	0	7
	December	2833	2298	1	2
2013	March	2981	2325	1	7
	June	2828	2221	0	4
	September	2715	2276	0	3
	December				

Graph 2.3: Notified cases of chlamydia by age group and quarter



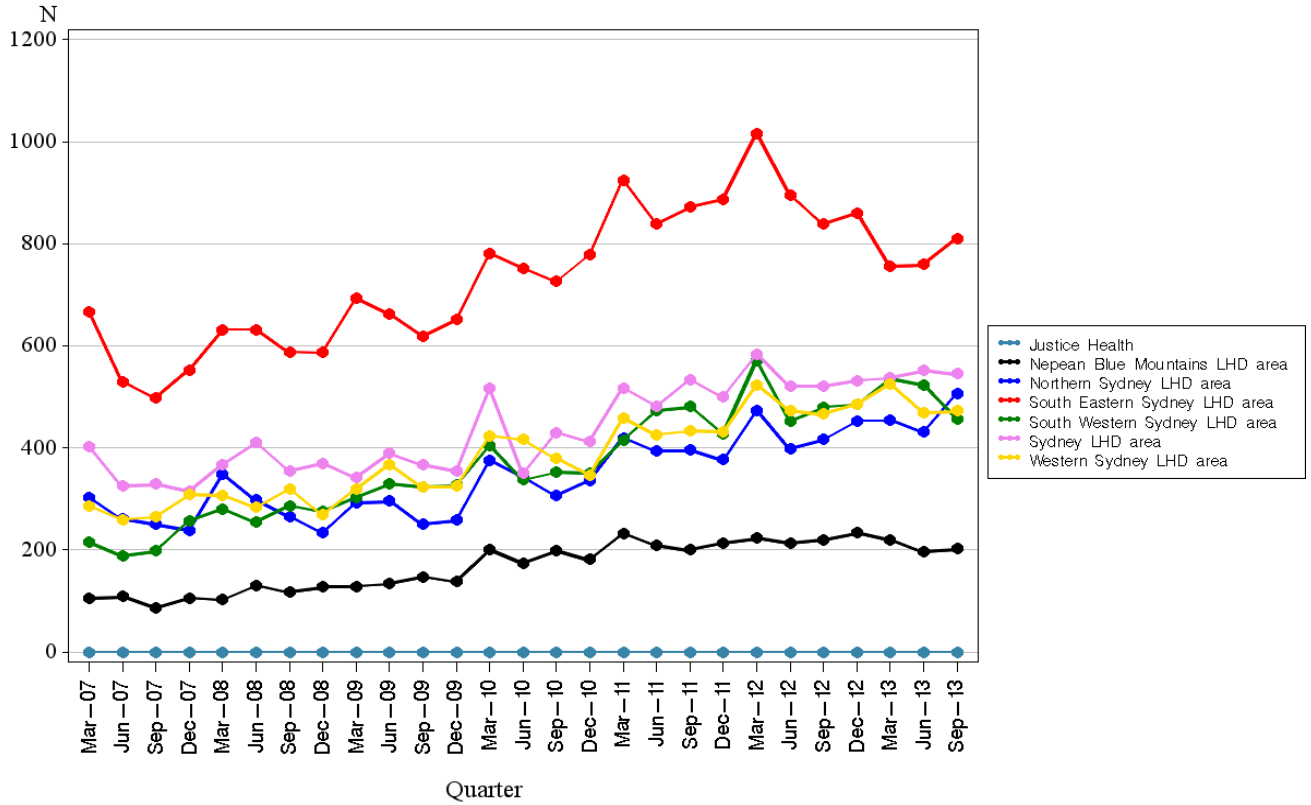
Note: Became notifiable in Aug 1998
Source: NCIMS (SAPHaRI)

Table 2.3: Notified cases of chlamydia by age group and quarter

Year	Quarter	<15yrs	15-24yrs	25-34yrs	35-44yrs	45+yrs
2007	March	25	1902	997	315	150
	June	19	1642	822	290	137
	September	19	1648	781	286	126
	December	22	1747	956	262	133
2008	March	23	2020	1002	318	184
	June	24	1987	984	342	161
	September	14	2005	976	321	168
	December	17	1840	931	306	153
2009	March	18	2002	1113	319	178
	June	31	2173	1065	354	179
	September	17	2118	967	350	172
	December	26	2072	969	368	197
2010	March	25	2717	1263	472	234
	June	26	2656	1170	375	202
	September	17	2635	1199	391	199
	December	27	2609	1215	359	202
2011	March	31	3111	1436	432	216
	June	38	2993	1390	418	235
	September	31	3051	1314	440	244
	December	32	2888	1354	417	261
2012	March	31	3472	1603	481	243
	June	26	2943	1389	444	288
	September	32	2883	1413	434	252
	December	30	2934	1427	468	274
2013	March	28	3056	1538	420	271
	June	35	2815	1503	420	277
	September	30	2767	1457	452	284
	December					

Graph 2.4: Notified cases of chlamydia by metropolitan LHD and quarter

Chlamydia Notifications for NSW, by Sydney metropolitan LHD and quarter.
 01 January 2007 to 30 September 2013
 No adjustment made for incomplete quarter.



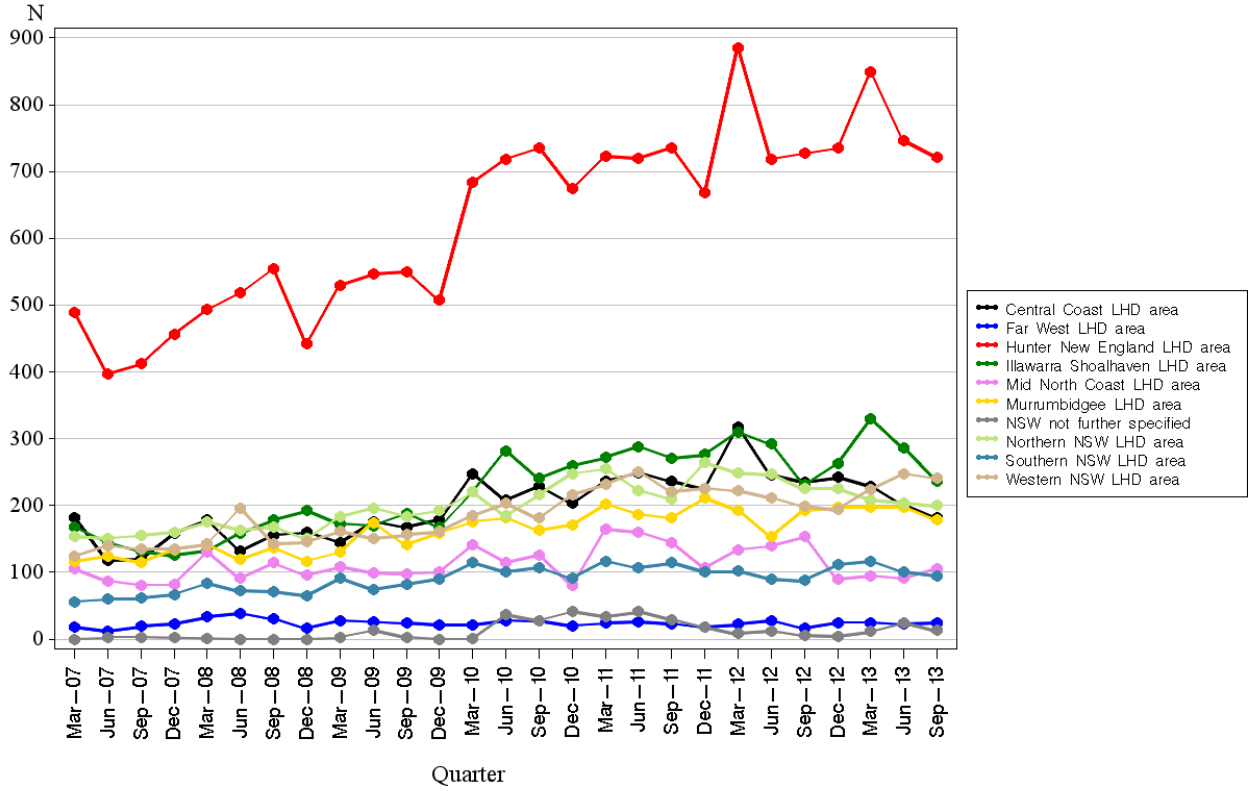
Note: Became notifiable in Aug 1998
 Source: NCIMS (SAPHaRI)

Table 2.4: Notified cases of chlamydia by metropolitan LHD and quarter

Year	Quarter	Nepean Blue Mountains	Northern Sydney	South Eastern Sydney	South Western Sydney	Sydney	Western Sydney
2007	March	105	303	666	215	402	287
	June	109	261	530	188	325	260
	September	87	250	498	198	329	265
	December	106	239	553	257	315	308
2008	March	102	349	632	280	368	307
	June	131	298	632	255	410	283
	September	118	265	588	287	354	319
	December	127	233	587	275	370	269
2009	March	129	292	693	303	342	319
	June	134	296	662	329	389	368
	September	147	250	619	324	367	323
	December	138	258	652	327	355	325
2010	March	200	376	781	405	516	424
	June	174	343	752	337	350	416
	September	199	306	726	352	430	380
	December	182	336	779	351	413	347
2011	March	232	420	925	415	517	458
	June	209	394	840	473	482	426
	September	200	396	872	481	534	434
	December	213	377	888	428	500	432
2012	March	223	473	1016	570	583	524
	June	213	398	896	453	520	473
	September	220	416	839	480	521	466
	December	234	453	860	485	532	485
2013	March	220	455	756	535	538	525
	June	198	431	760	523	552	469
	September	203	506	811	457	545	473
	December						

Graph 2.5: Notified cases of chlamydia by non-metropolitan LHD and quarter

Chlamydia Notifications for NSW, by non metropolitan LHD and quarter.
 01 January 2007 to 30 September 2013
 No adjustment made for incomplete quarter.



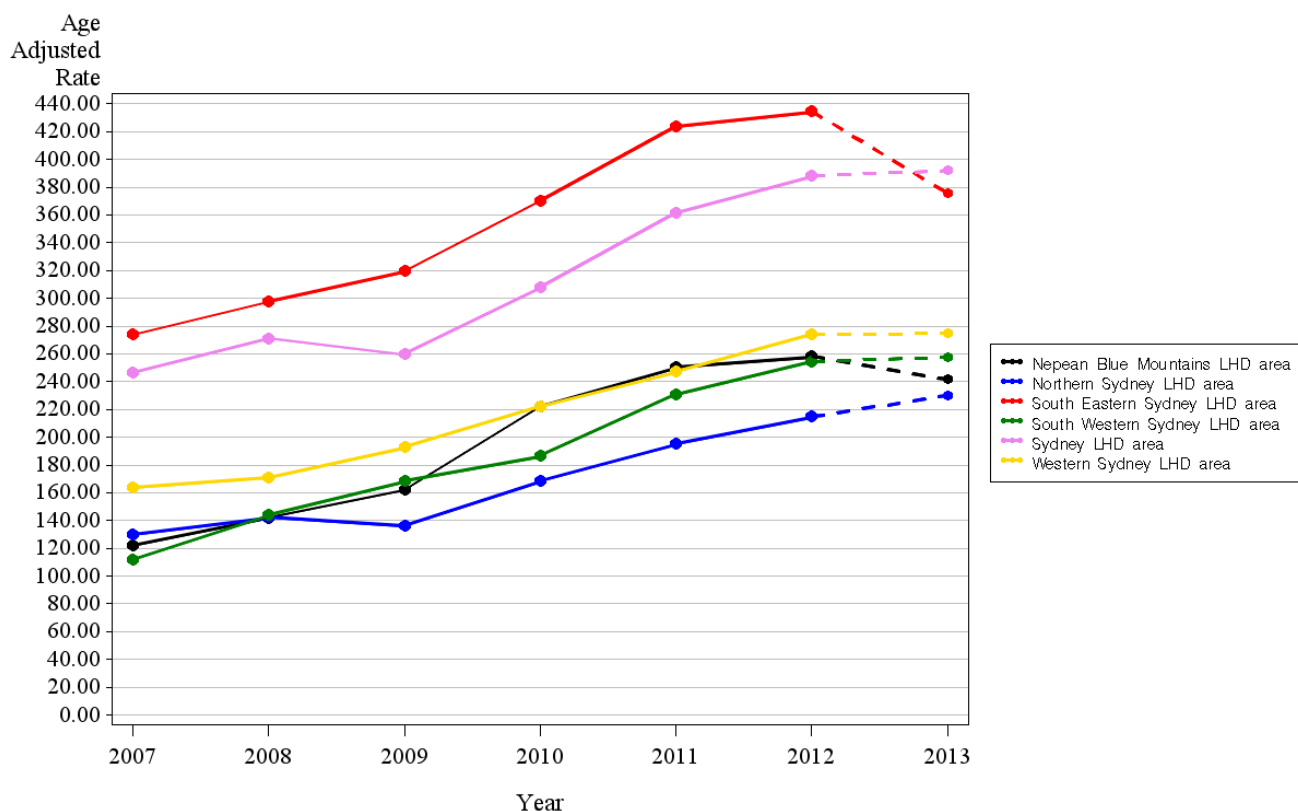
Note: Became notifiable in Aug 1998
 Source: NCIMS (SAPHaRI)

Table 2.5: Notified cases of chlamydia by non-metropolitan LHD and quarter

Year	Quarter	NSW not further specified									
		Central Coast	Far West	Hunter New England	Illawarra Shoalhaven	Mid North Coast	Murrumbidgee	Northern NSW	Southern NSW	Western NSW	
2007	March	182	18	489	168	105	116	153	0	56	124
	June	118	12	397	145	87	124	151	3	60	140
	September	120	19	412	132	81	115	155	3	61	135
	December	158	23	456	125	82	134	160	2	67	135
2008	March	178	33	493	132	130	141	175	1	83	142
	June	132	39	518	159	91	119	163	0	72	196
	September	156	31	554	178	114	137	168	0	71	143
	December	160	16	442	192	96	117	150	0	65	146
2009	March	145	28	530	173	108	130	183	3	91	161
	June	176	26	546	170	99	174	196	13	74	151
	September	167	24	550	188	98	141	184	3	82	157
	December	178	21	507	167	101	159	192	0	90	161
2010	March	247	21	684	220	141	176	220	1	114	185
	June	208	28	719	282	115	182	185	36	100	203
	September	229	27	736	241	126	163	216	28	107	181
	December	203	20	674	260	80	171	248	41	91	216
2011	March	237	24	723	272	164	202	255	34	117	231
	June	249	26	720	288	160	187	223	41	107	250
	September	236	23	736	271	145	182	210	29	114	220
	December	225	18	669	277	107	211	264	18	101	226
2012	March	317	22	885	310	134	193	249	8	102	222
	June	245	28	719	292	140	154	247	12	90	212
	September	235	16	727	231	153	193	225	5	88	199
	December	242	25	735	263	89	197	225	4	111	194
2013	March	229	25	849	330	95	197	208	11	117	224
	June	200	23	746	286	91	198	204	24	100	248
	September	181	25	722	237	106	179	200	13	94	241
	December										

Graph 2.6: Notified rates of chlamydia by metropolitan LHD and year

Chlamydia Notifications for NSW. Age adjusted rate per 100,000
by Sydney metropolitan LHD and year.
01 January 2007 to 30 September 2013
Adjusted for most recent year being incomplete.



Note: Became notifiable in Aug 1998
Source: NCIMS (SAPHARI)

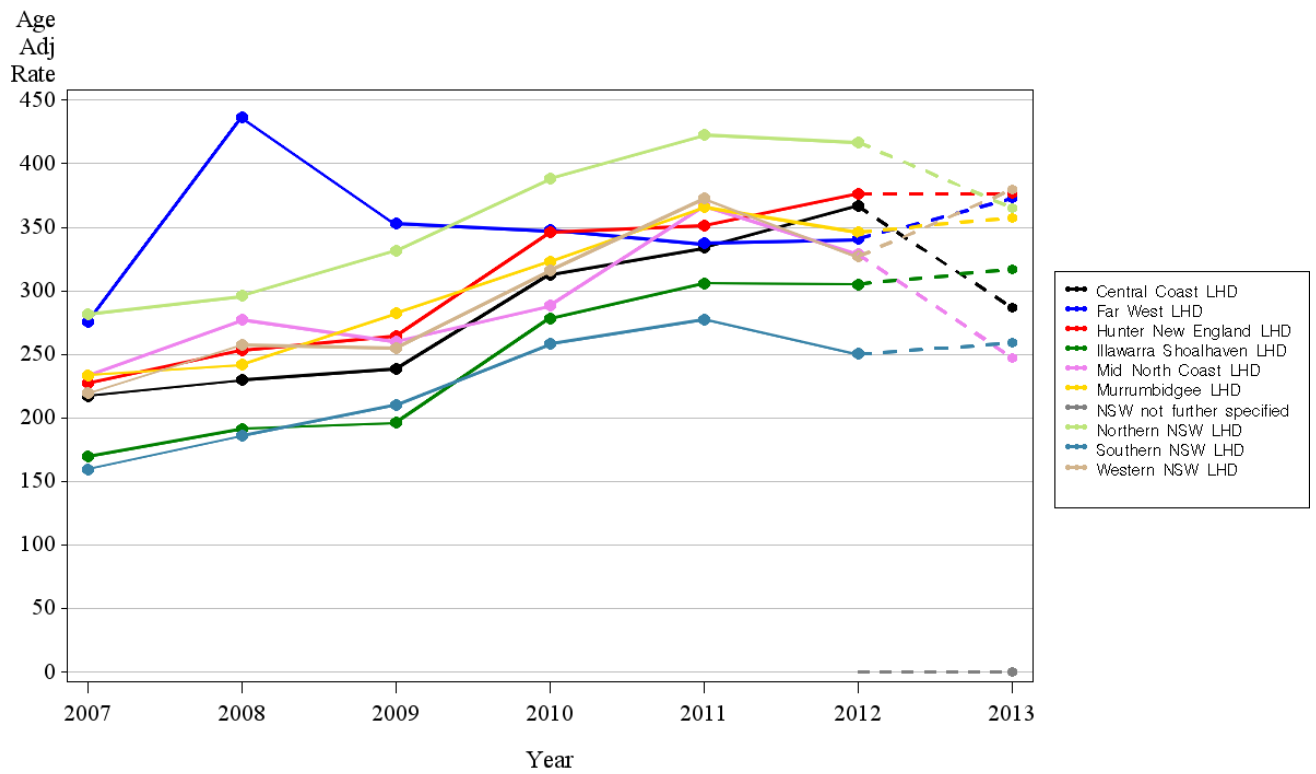
Table 2.6: Notified rates of chlamydia by metropolitan LHD and year

Chlamydia notifications for NSW, age adjusted rate per 100,000 by Sydney metropolitan LHD and year, 01 January 2007 to 30 September 2013 (Adjusted for most recent year being incomplete)

Year	Nepean Blue Mountains	Northern Sydney	South Eastern Sydney	South Western Sydney	Sydney	Western Sydney
2007	119	134	245	101	218	134
2008	137	144	261	127	237	137
2009	158	136	276	146	222	152
2010	214	167	317	162	260	175
2011	243	194	364	201	304	194
2012	253	214	371	220	323	215
2013	236	225	318	221	322	213

Graph 2.7: Notified rates of chlamydia by non-metropolitan LHD and year

Chlamydia Notifications for NSW. Age adjusted rate per 100,000
 by non metropolitan LHD and year.
 01 January 2007 to 30 September 2013
 Adjusted for most recent year being incomplete.



Note: Became notifiable in Aug 1998
 Source: NCIMS (SAPHaRI)

Table 2.7: Notified rates of chlamydia by non-metropolitan LHD and year

Chlamydia notifications for NSW, age adjusted rate per 100,000 by non-metropolitan LHD and year, 01 January 2007 to 30 September 2013, (Adjusted for most recent year being incomplete)

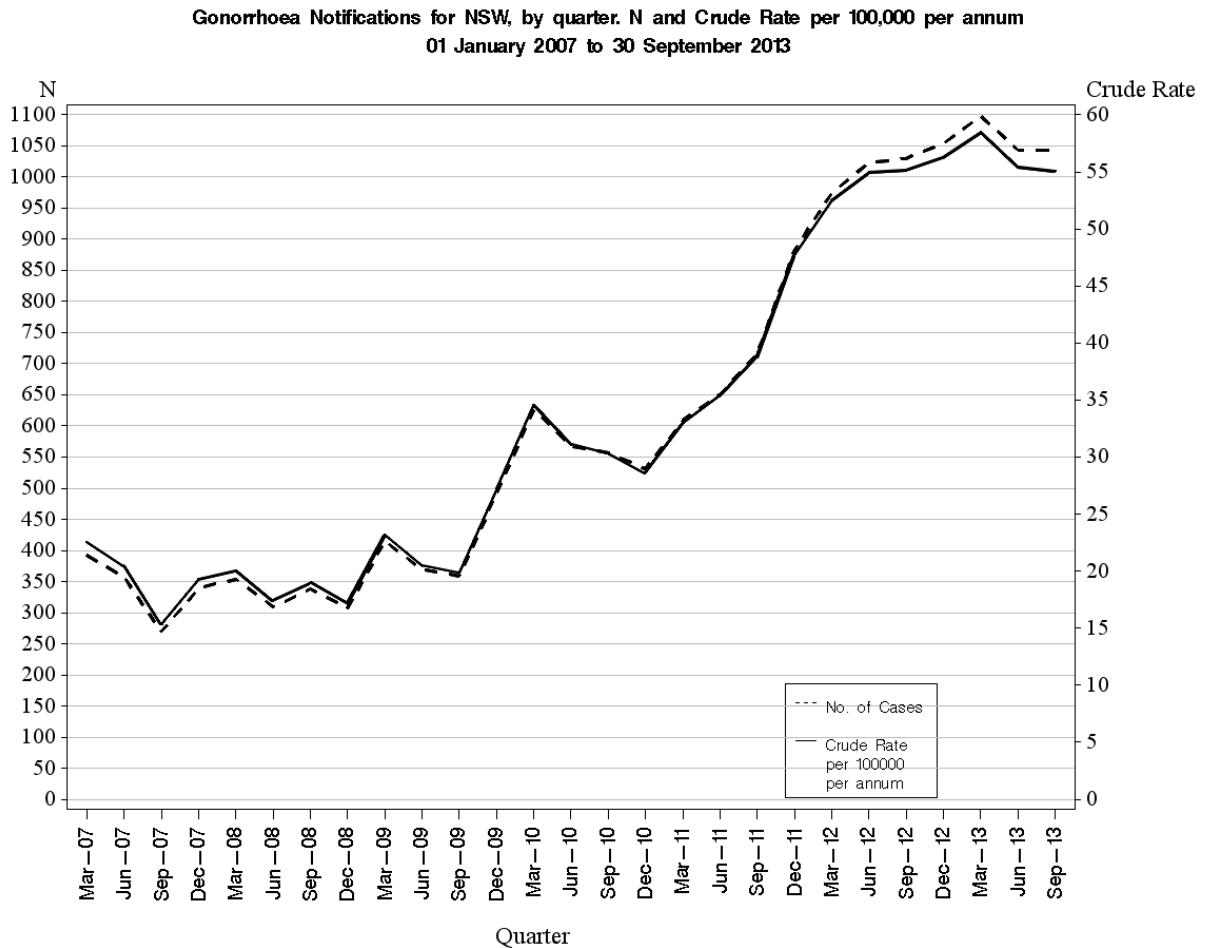
Year	Central Coast	Far West	Hunter New England	Illawarra Shoalhaven	Mid North Coast	Murrumbidgee	Northern NSW	Southern NSW	Western NSW
2007	217	276	227	170	233	234	282	160	219
2008	230	436	253	191	277	242	296	186	257
2009	238	353	265	196	260	282	332	210	255
2010	313	348	346	278	288	323	388	258	316
2011	334	338	351	306	367	366	423	277	372
2012	367	341	376	305	329	346	417	250	327
2013	287	373	376	317	247	357	365	259	380

3. Gonorrhoea

A confirmed case requires isolation of *Neisseria gonorrhoeae* from culture or by NAT.

Gonorrhoea infections are not routinely followed up by the Public Health Units so detailed information (eg Aboriginality, exposure) is not generally available. An enhanced surveillance project that was piloted in South East Sydney in early 2013, was rolled out to the rest of NSW in the second half of 2013. Analysis and evaluation is currently underway.

Graph 3.1: Notified cases and rates of gonorrhoea for NSW by quarter



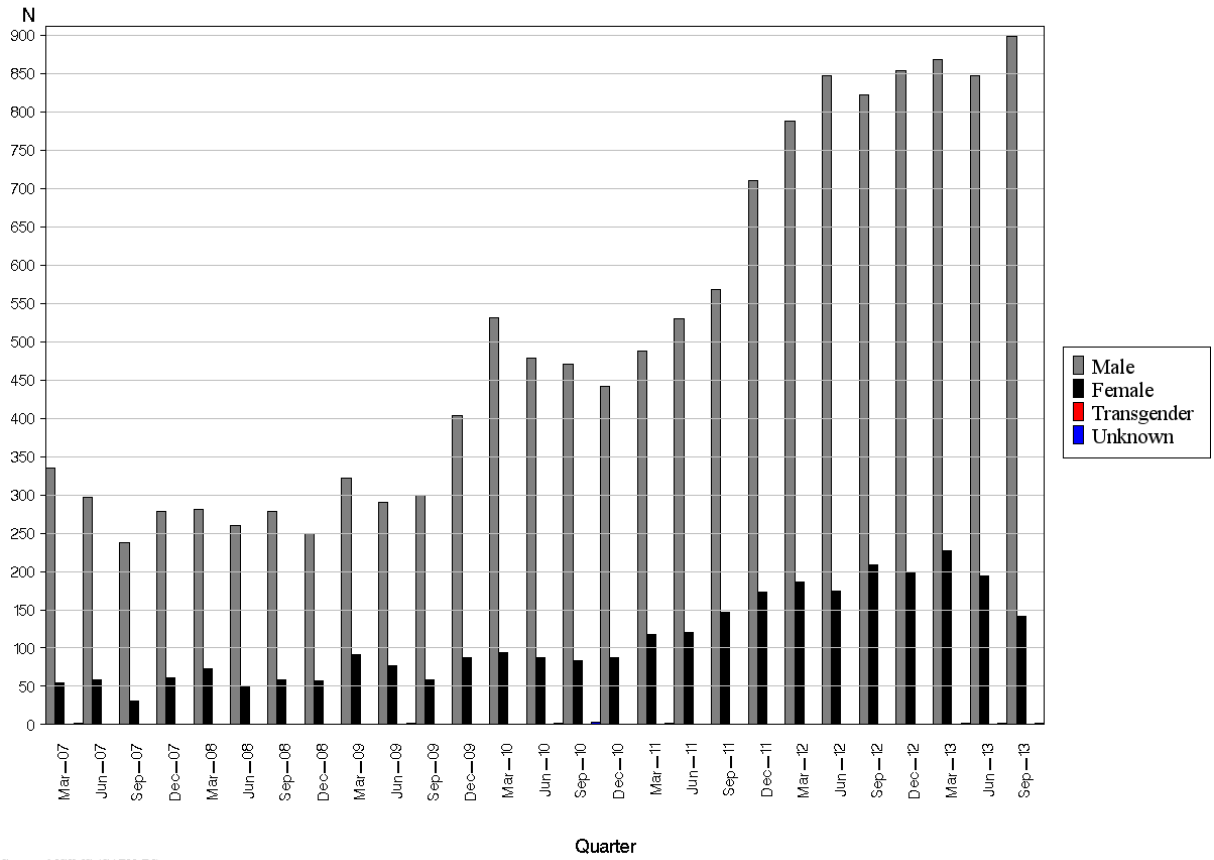
Source NCIMS (SAPHaRI)

Table 3.1: Notified cases and rates of gonorrhoea for NSW by quarter

Year	Quarter	No. of notifications	Crude rate per 100,000 per annum
2007	March	392	23
	June	357	20
	September	269	15
	December	339	19
2008	March	354	20
	June	309	17
	September	338	19
	December	307	17
2009	March	415	23
	June	369	21
	September	359	20
	December	491	27
2010	March	626	35
	June	567	31
	September	557	30
	December	531	29
2011	March	609	33
	June	651	35
	September	716	39
	December	883	48
2012	March	974	52
	June	1023	55
	September	1030	55
	December	1054	56
2013	March	1098	58
	June	1044	55
	September	1042	55
	December		

Graph 3.2: Notified cases of gonorrhoea by sex and quarter

Gonorrhoea Notifications for NSW by sex and quarter.
01 January 2007 to 30 September 2013

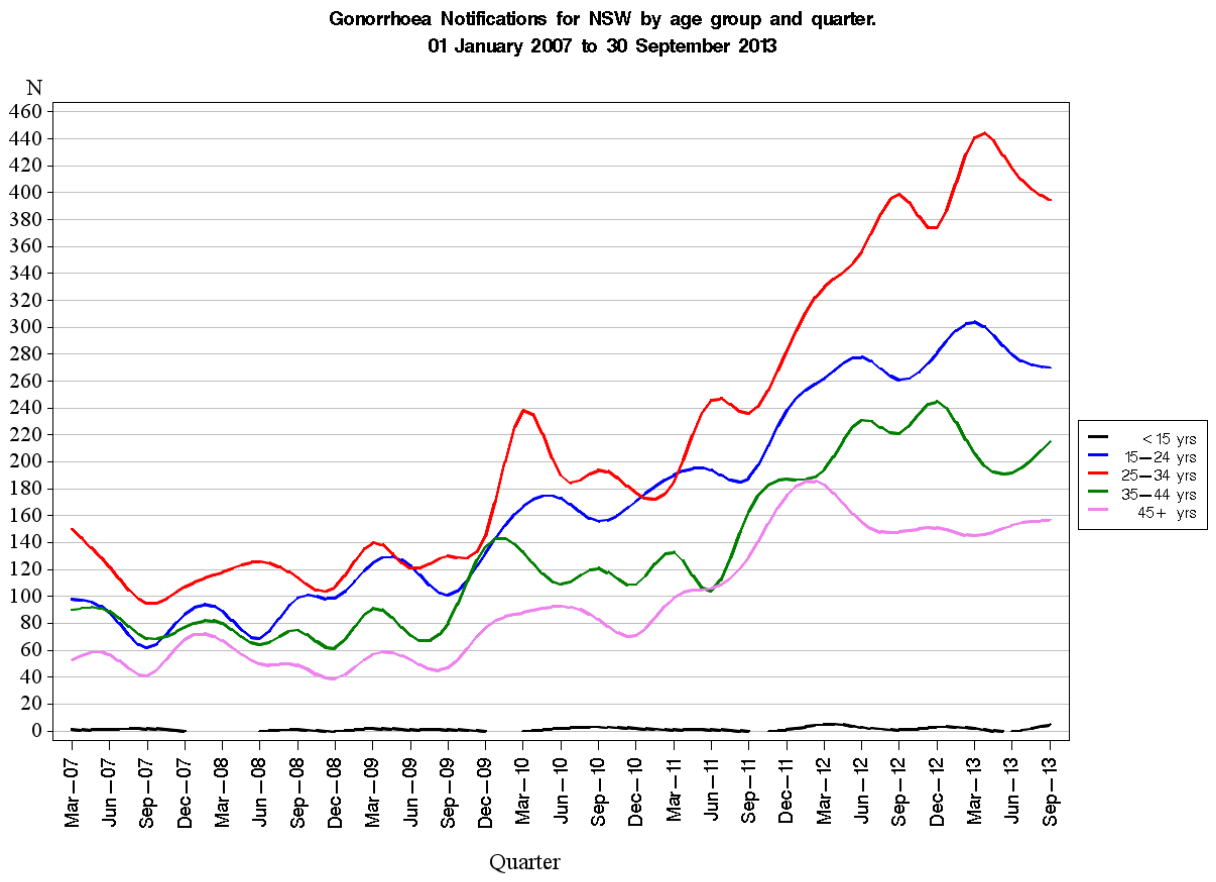


Source: NCIMS (SAPHaRI)

Table 3.2: Notified cases of gonorrhoea by sex and quarter

Year	Quarter	Females	Males	Transgender	Unknown
2007	March	55	335	0	2
	June	59	297	1	0
	September	31	238	0	0
	December	61	278	0	0
2008	March	73	281	0	0
	June	49	260	0	0
	September	58	279	0	1
	December	57	250	0	0
2009	March	91	322	1	1
	June	77	290	0	2
	September	58	300	0	1
	December	88	403	0	0
2010	March	94	531	0	1
	June	87	478	0	2
	September	84	470	0	3
	December	88	443	0	0
2011	March	118	488	1	2
	June	120	530	1	0
	September	147	568	0	1
	December	173	710	0	0
2012	March	186	788	0	0
	June	175	847	0	1
	September	208	822	0	0
	December	199	854	1	0
2013	March	227	868	1	2
	June	194	847	1	2
	September	141	899	0	2
	December				

Graph 3.3: Notified cases of gonorrhoea by age group and quarter



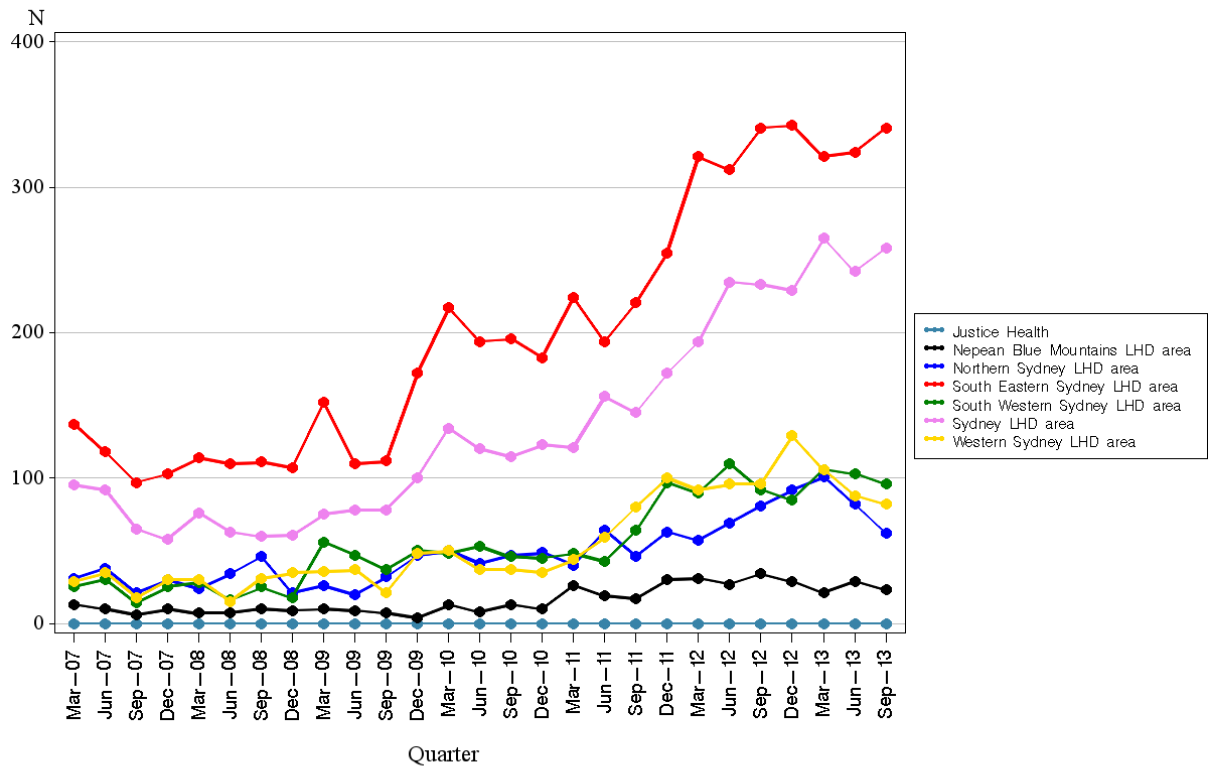
Source: NCIMS (SAPHaRI)

Table 3.3: Notified cases of gonorrhoea by age group and quarter

Year	Quarter	<15yrs	15-24yrs	25-34yrs	35-44yrs	45+yrs
2007	March	1	98	150	90	53
	June	1	88	122	89	57
	September	2	62	95	69	41
	December	0	87	107	77	68
2008	March	0	89	118	80	67
	June	0	69	126	64	50
	September	1	99	114	75	49
	December	0	99	107	62	39
2009	March	2	125	140	91	57
	June	1	123	121	71	53
	September	1	101	130	80	47
	December	0	132	145	137	77
2010	March	0	167	238	133	88
	June	2	173	190	109	93
	September	3	156	194	121	83
	December	2	172	177	109	71
2011	March	1	190	185	133	99
	June	1	194	246	104	106
	September	0	188	236	163	129
	December	1	238	282	187	175
2012	March	5	262	330	194	183
	June	3	278	356	231	155
	September	1	261	399	221	148
	December	3	281	374	245	151
2013	March	2	304	441	206	145
	June	0	280	418	192	153
	September	5	270	394	215	158
	December					

Graph 3.4: Notified cases of gonorrhoea by metropolitan LHD and quarter

Gonorrhoea Notifications for NSW, by Sydney metropolitan LHD and year.
01 January 2007 to 30 September 2013
No adjustment made for incomplete quarter.



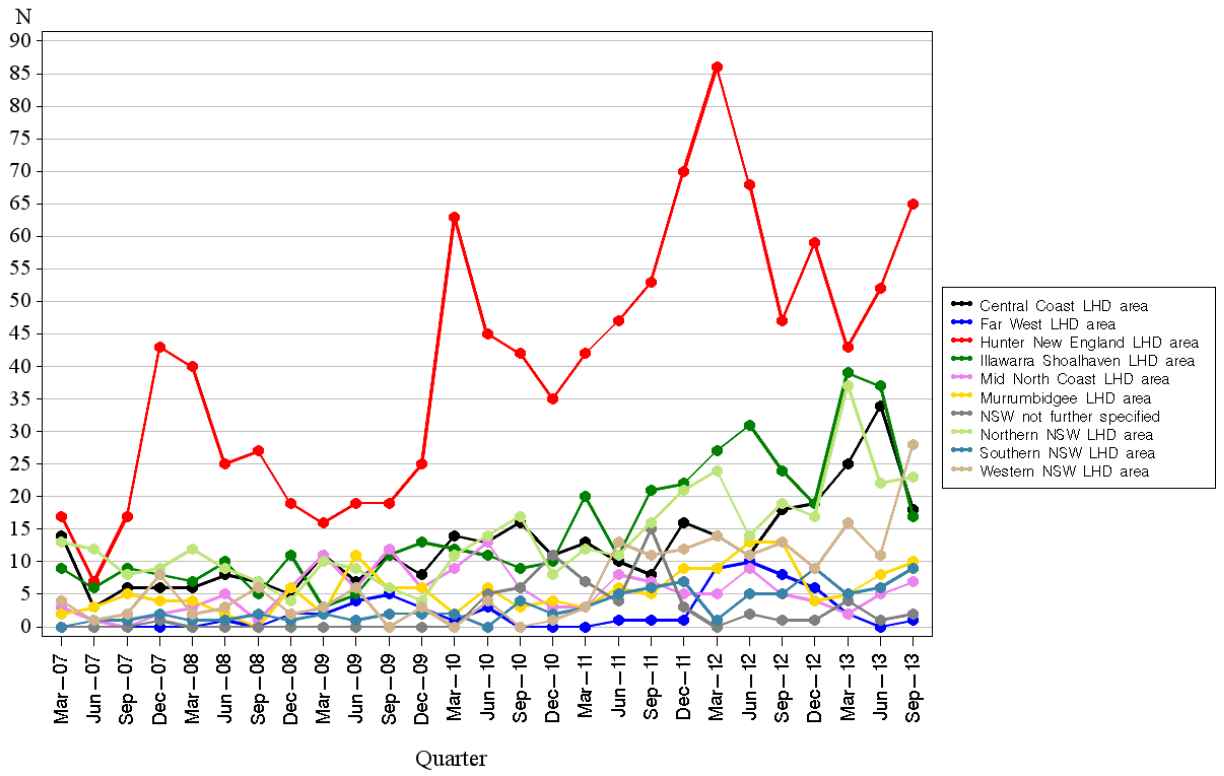
Source: NCIMS (SAPHaRI)

Table 3.4: Notified cases of gonorrhoea by metropolitan LHD and quarter

Year	Quarter	Nepean Blue Mountains	Northern Sydney	South Eastern Sydney	South Western Sydney	Sydney	Western Sydney
2007	March	13	31	137	25	95	29
	June	10	38	118	30	92	35
	September	6	21	97	14	65	18
	December	10	30	103	25	58	30
2008	March	7	24	114	28	76	30
	June	7	34	110	16	63	15
	September	10	46	111	25	60	31
	December	9	21	107	18	61	35
2009	March	10	26	152	56	75	36
	June	9	20	110	47	78	37
	September	7	32	112	37	78	21
	December	4	47	172	50	100	48
2010	March	13	50	217	48	134	50
	June	8	41	194	53	120	37
	September	13	47	196	46	115	37
	December	10	49	183	45	123	35
2011	March	26	40	224	48	121	44
	June	19	64	194	43	156	59
	September	17	46	221	64	145	80
	December	30	63	255	97	172	100
2012	March	31	57	321	90	194	92
	June	27	69	312	110	235	96
	September	34	81	341	92	233	96
	December	29	92	343	85	229	129
2013	March	21	101	321	106	265	106
	June	29	82	324	103	242	88
	September	23	62	341	96	258	82
	December						

Graph 3.5: Notified cases of gonorrhoea by non-metropolitan LHD and quarter

Gonorrhoea Notifications for NSW, by non metropolitan LHD and year.
 01 January 2007 to 30 September 2013
 No adjustment made for incomplete quarter.



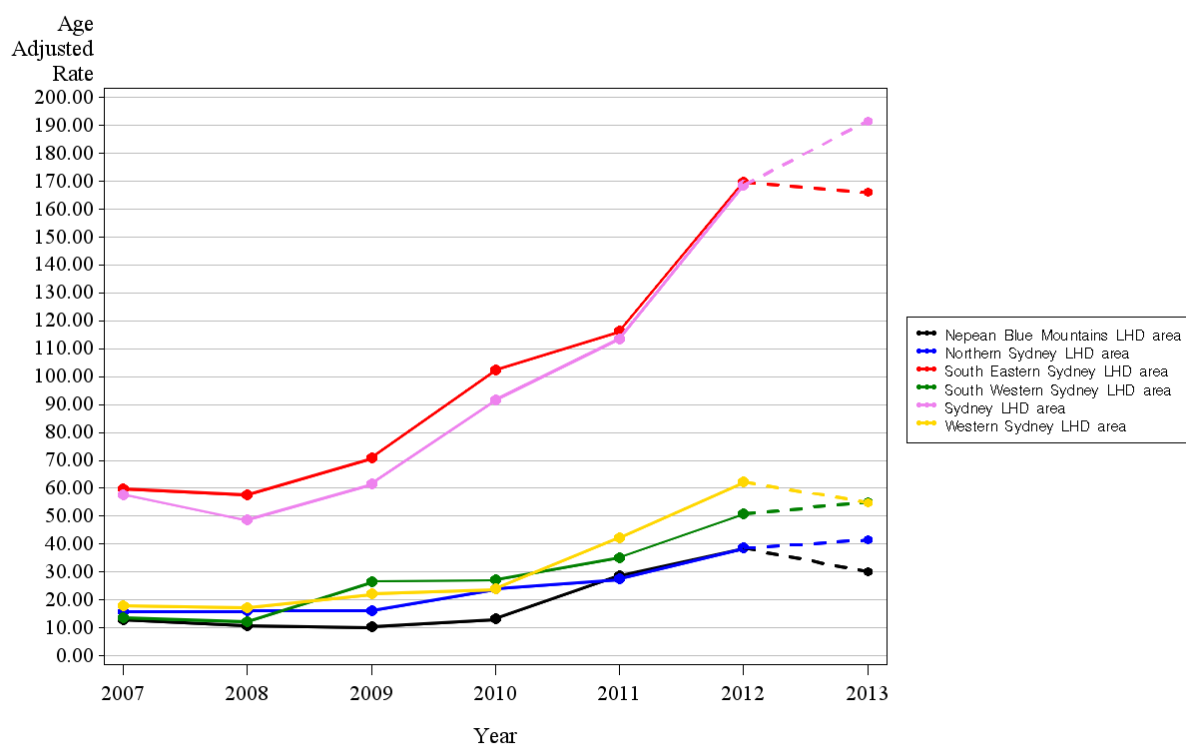
Source: NCIMS (SAPHaRI)

Table 3.5: Notified cases of gonorrhoea by non-metropolitan LHD and quarter

Year	Quarter	NSW not further specified									Western NSW
		Central Coast	Far West	Hunter New England	Illawarra Shoalhaven	Mid North Coast	Murrumbidgee	Northern NSW	Southern NSW		
2007	March	14	0	17	9	3	2	13	0	0	4
	June	3	0	7	6	1	3	12	0	1	1
	September	6	0	17	9	0	5	8	0	1	2
	December	6	0	43	8	2	4	9	1	2	8
2008	March	6	0	40	7	3	4	12	0	1	2
	June	8	1	25	10	5	2	9	0	1	3
	September	7	0	27	5	1	0	7	0	2	6
	December	5	2	19	11	6	6	4	0	1	2
2009	March	11	2	16	3	11	2	10	0	2	3
	June	7	4	19	5	6	11	9	0	1	6
	September	11	5	19	11	12	6	6	0	2	0
	December	8	3	25	13	6	6	4	0	2	3
2010	March	14	1	63	12	9	2	11	0	2	0
	June	13	3	45	11	13	6	14	5	0	4
	September	16	0	42	9	6	3	17	6	4	0
	December	11	0	36	10	3	4	8	11	2	1
2011	March	13	0	42	20	3	3	12	7	3	3
	June	10	1	47	11	8	6	11	4	5	13
	September	8	1	53	21	7	5	16	15	6	11
	December	16	1	70	22	5	9	21	3	7	12
2012	March	14	9	86	27	5	9	24	0	1	14
	June	11	10	68	31	9	13	14	2	5	11
	September	18	8	47	24	5	13	19	1	5	13
	December	19	6	59	19	4	4	17	1	9	9
2013	March	25	2	43	39	2	5	37	4	5	16
	June	34	0	52	37	5	8	22	1	6	11
	September	18	1	65	17	7	10	23	2	9	28
	December										

Graph 3.6: Notified rates of gonorrhoea by metropolitan LHD and year

Gonorrhoea Notifications for NSW. Age adjusted rate per 100,000
by Sydney metropolitan LHD and year.
01 January 2007 to 30 September 2013
Adjusted for most recent year being incomplete.



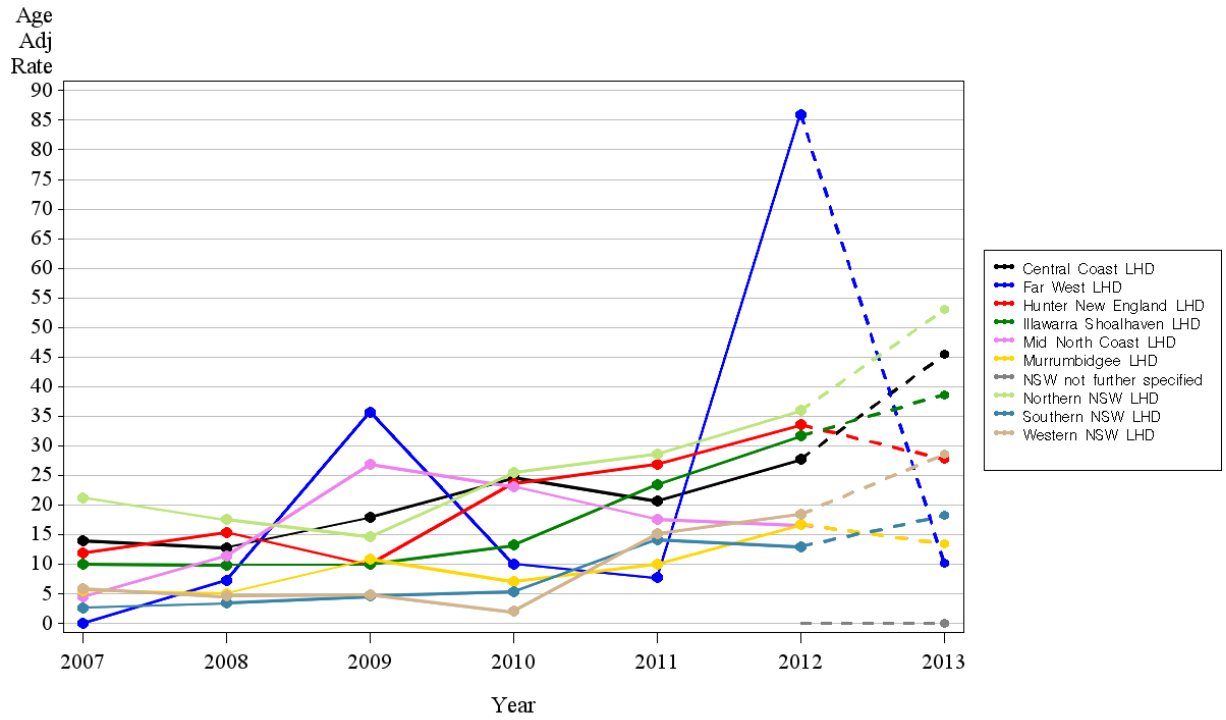
Source: NCIMS (SAPHaRI)

Table 3.6: Notified rates of gonorrhoea by metropolitan LHD and year

Year	Nepean Blue Mountains	Northern Sydney	South Eastern Sydney	South Western Sydney	Sydney	Western Sydney
2007	11	15	51	11	48	14
2008	9	15	48	10	40	13
2009	9	15	59	22	50	17
2010	13	23	83	22	73	18
2011	26	25	95	29	89	31
2012	35	35	138	43	132	46
2013	28	38	135	46	148	40

Graph 3.7: Notified rates of gonorrhoea by non-metropolitan LHD and year

Gonorrhoea Notifications for NSW. Age adjusted rate per 100,000
 by non metropolitan LHD and year.
 01 January 2007 to 30 September 2013
 Adjusted for most recent year being incomplete.



Source: NCIMS (SAPHARI)

Table 3.7: Notified rates of gonorrhoea by non-metropolitan LHD and year

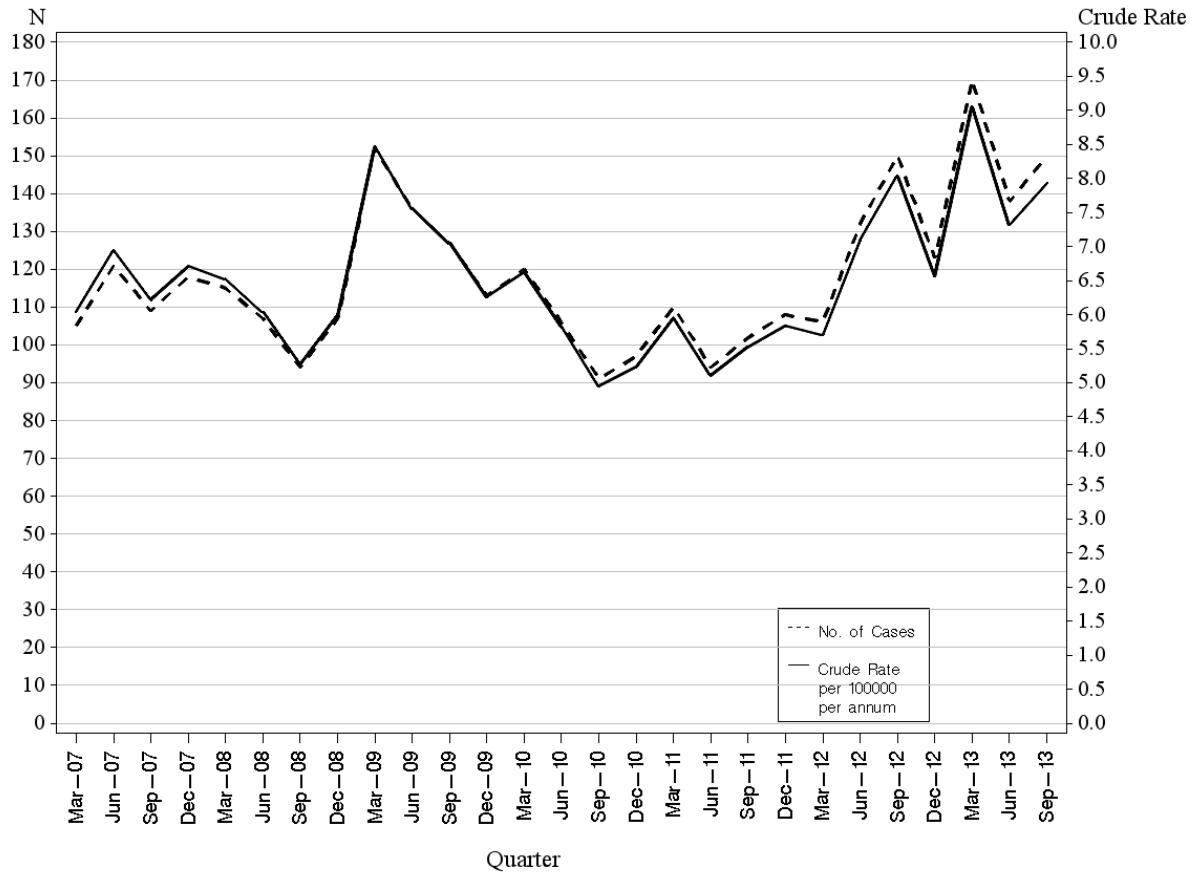
Year	Central Coast	Far West	Hunter New England	Illawarra Shoalhaven	Mid North Coast	Murrumbidgee	Northern NSW	NSW not further specified	Southern NSW	Western NSW
2007	11	0	11	9	4	6	18	0	3	6
2008	10	11	14	9	9	6	14	0	3	5
2009	13	49	10	9	21	11	13	0	4	5
2010	19	14	23	12	19	7	22	0	5	2
2011	17	12	26	21	14	11	25	0	13	17
2012	22	123	32	30	14	19	31	0	13	19
2013	36	16	26	35	12	15	47	0	16	31

4. Syphilis

Syphilis is recorded in NCIMS as 'syphilis – congenital', 'syphilis – infectious' or 'syphilis - greater than 2 years or unknown duration'. Only infectious syphilis is included in this report.

Graph 4.1: Notified cases and rates of infectious syphilis for NSW by quarter

Infectious Syphilis Notifications for NSW (excluding congenital infections), by quarter. N and Crude Rate per 100,000 per annum
01 January 2007 to 30 September 2013



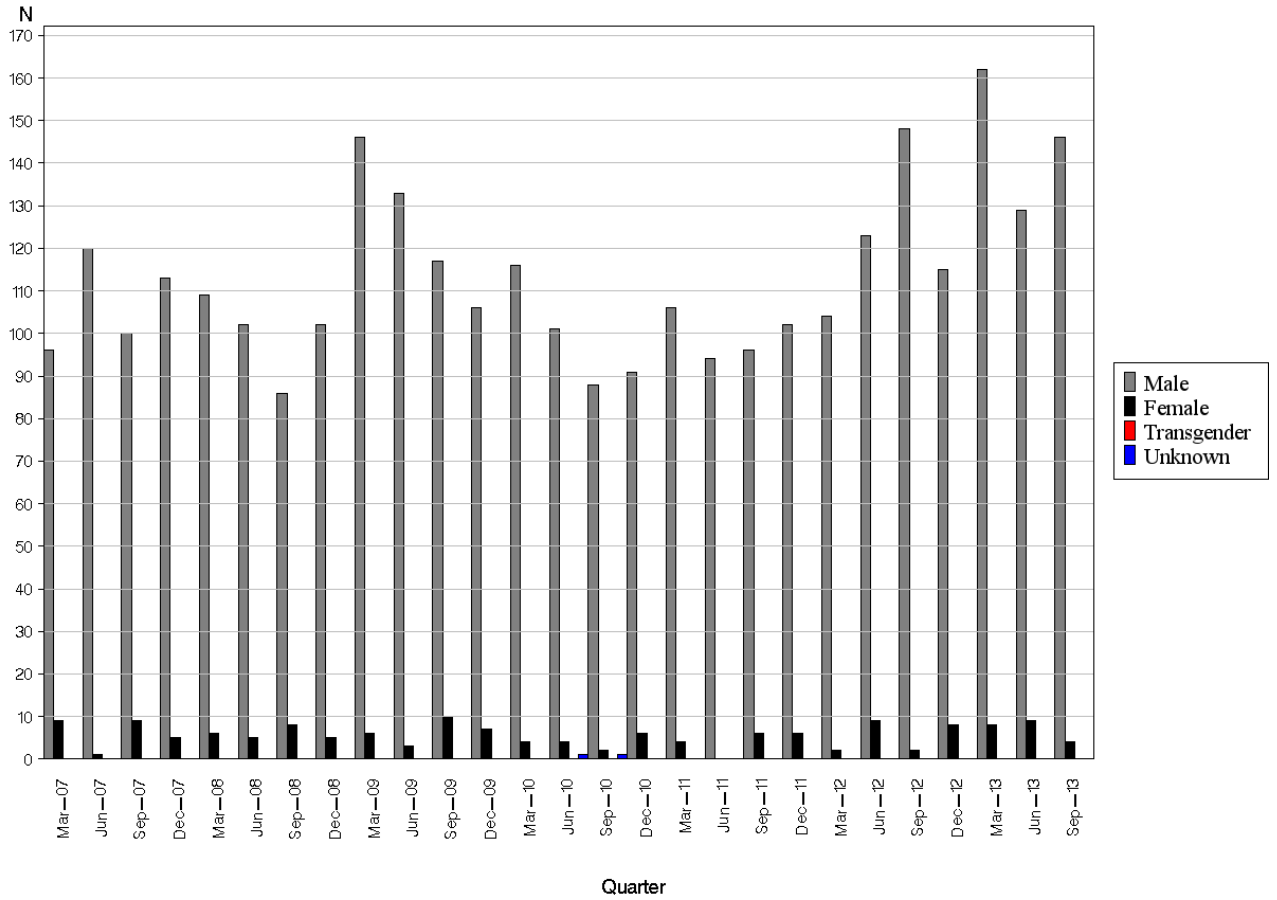
Source: NCIMS (SAPHARI)

Table 4.1: Notified cases and rates of infectious syphilis for NSW by quarter

Year	Quarter	No. of notifications	Crude Rate per 100,000 per annum
2007	March	105	6
	June	121	7
	September	109	6
	December	118	7
2008	March	115	7
	June	107	6
	September	94	5
	December	107	6
2009	March	152	8
	June	136	8
	September	127	7
	December	113	6
2010	March	120	7
	June	106	6
	September	91	5
	December	97	5
2011	March	110	6
	June	94	5
	September	102	6
	December	108	6
2012	March	106	6
	June	132	7
	September	150	8
	December	123	7
2013	March	170	9
	June	138	7
	September	150	8
	December		

Graph 4.2: Notified cases of infectious syphilis by sex and quarter

Infectious Syphilis Notifications for NSW (excluding congenital infections), by sex and quarter.
01 January 2007 to 30 September 2013

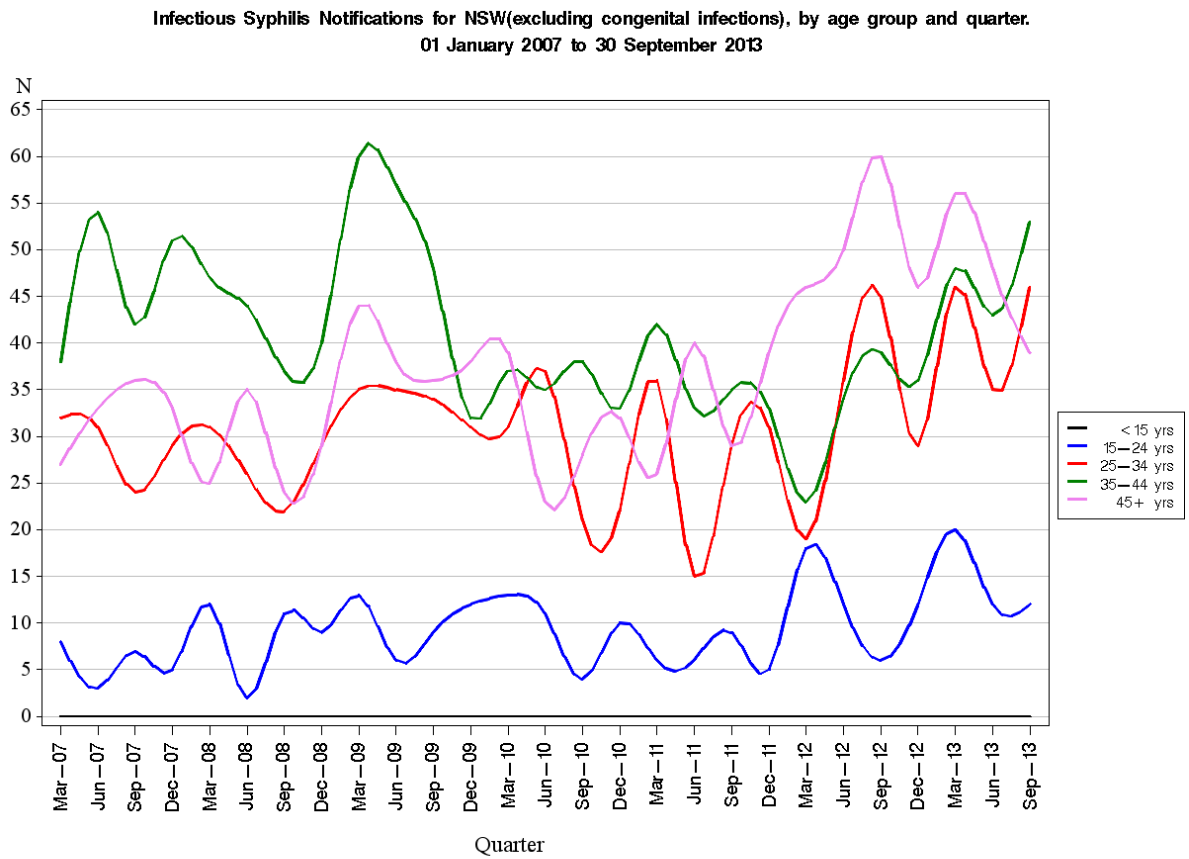


Source: NCIMS (SAPHaRI)

Table 4.2: Notified cases of infectious syphilis by sex and quarter

Year	Quarter	Female	Male	Transgender	Unknown
2007	March	9	96	0	0
	June	1	120	0	0
	September	9	100	0	0
	December	5	113	0	0
2008	March	6	109	0	0
	June	5	102	0	0
	September	8	86	0	0
	December	5	102	0	0
2009	March	6	146	0	0
	June	3	133	0	0
	September	10	117	0	0
	December	7	106	0	0
2010	March	4	116	0	0
	June	4	101	0	1
	September	2	88	0	1
	December	6	91	0	0
2011	March	4	106	0	0
	June	0	94	0	0
	September	6	96	0	0
	December	6	102	0	0
2012	March	2	104	0	0
	June	9	123	0	0
	September	2	148	0	0
	December	8	115	0	0
2013	March	8	162	0	0
	June	9	129	0	0
	September	4	146	0	0
	December				

Graph 4.3: Notified cases of infectious syphilis by age group and quarter



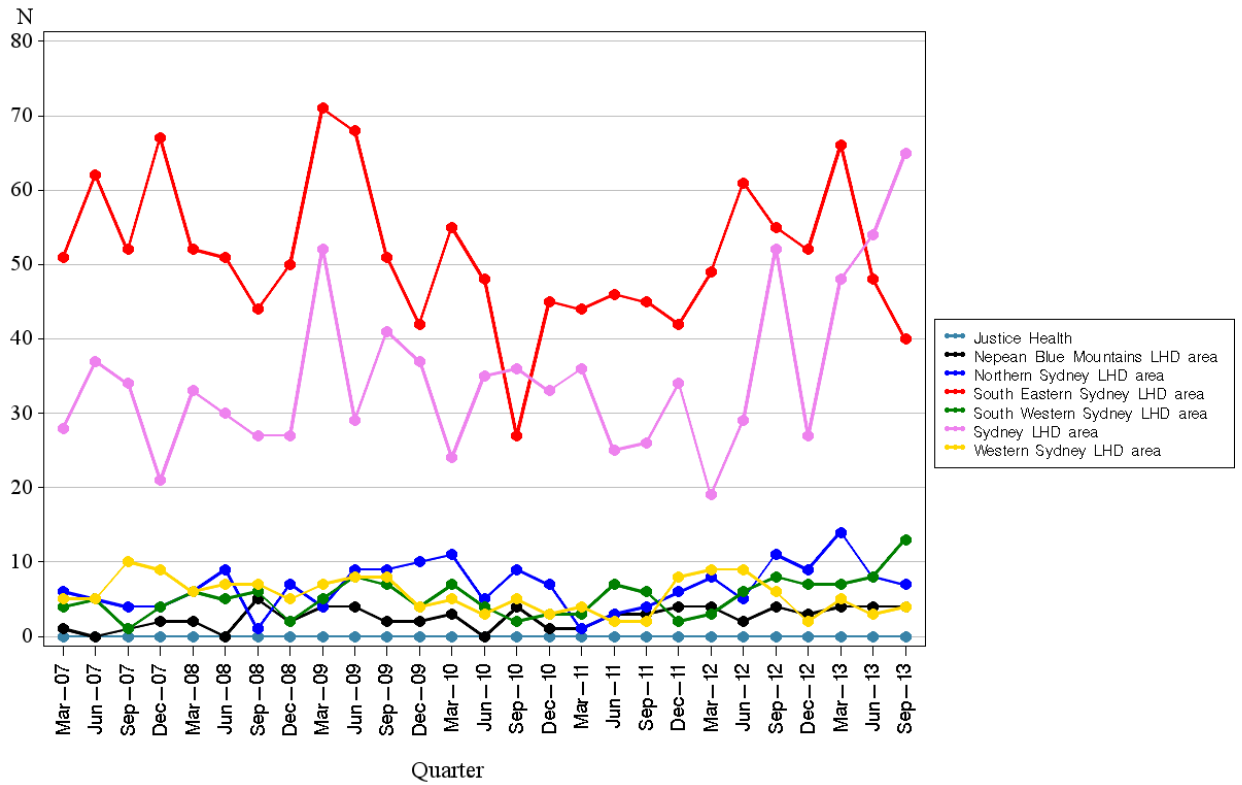
Source: NCIMS (SAPHaRI)

Table 4.3: Notified cases of infectious syphilis by age group and quarter

Year	Quarter	<15yrs	15-24yrs	25-34yrs	35-44yrs	45+yrs
2007	March	0	8	32	38	27
	June	0	3	31	54	33
	September	0	7	24	42	36
	December	0	5	29	51	33
2008	March	0	12	31	47	25
	June	0	2	26	44	35
	September	0	11	22	37	24
	December	0	9	29	40	29
2009	March	0	13	35	60	44
	June	0	6	35	57	38
	September	0	9	34	48	36
	December	0	12	31	32	38
2010	March	0	13	31	37	39
	June	0	11	37	35	23
	September	0	4	21	38	28
	December	0	10	22	33	32
2011	March	0	6	36	42	26
	June	0	6	15	33	40
	September	0	9	29	35	29
	December	0	5	31	33	39
2012	March	0	18	19	23	46
	June	0	12	36	34	50
	September	0	6	45	39	60
	December	0	12	29	36	46
2013	March	0	20	46	48	56
	June	0	12	35	43	48
	September	0	12	46	53	39
	December					

Graph 4.4: Notified cases of infectious syphilis by metropolitan LHD and quarter

Infectious Syphilis Notifications for NSW (excluding congenital infections), by Sydney metropolitan LHD and quarter.
01 January 2007 to 30 September 2013
 No adjustment made for incomplete quarter.



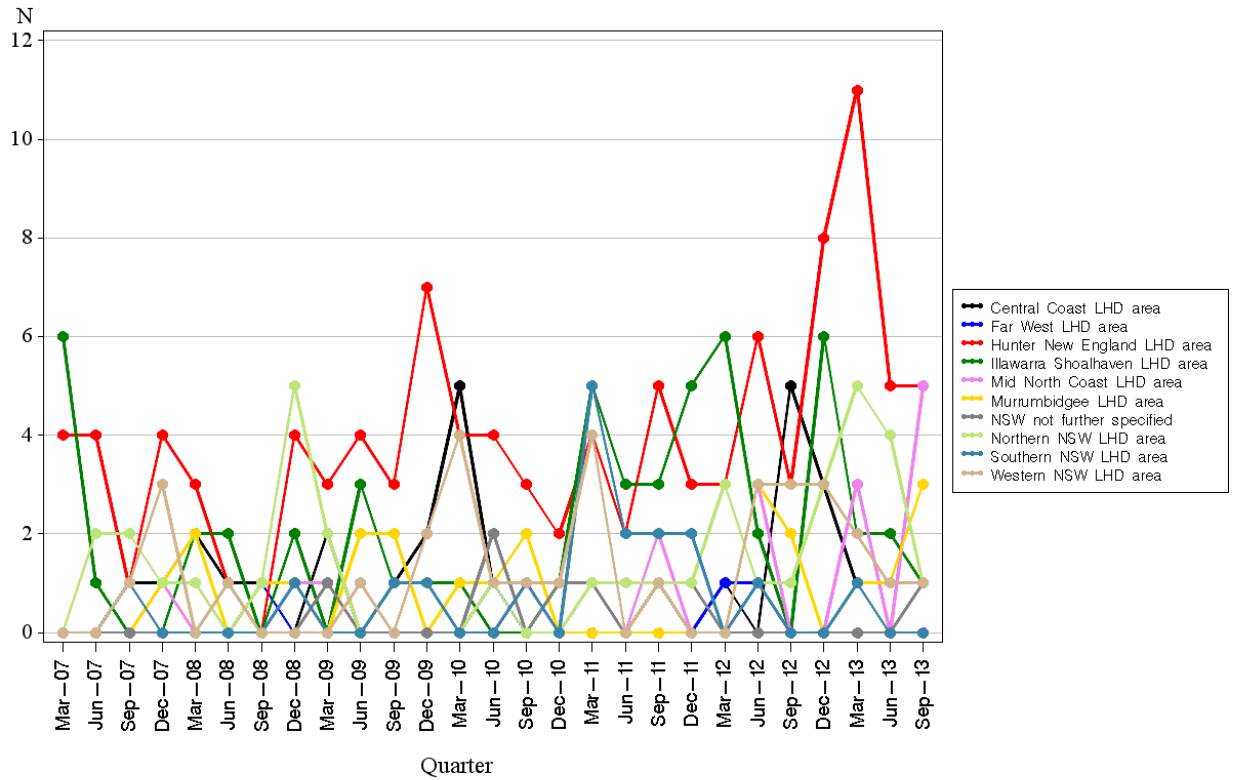
Source: NCIMS (SAPHaRI)

Table 4.4: Notified cases of infectious syphilis by metropolitan LHD and quarter

Year	Quarter	Nepean Blue Mountains	Northern Sydney	South Eastern Sydney	South Western Sydney	Sydney	Western Sydney
2007	March	1	6	51	4	28	5
	June	0	5	62	5	37	5
	September	1	4	52	1	34	10
	December	2	4	67	4	21	9
2008	March	2	6	52	6	33	6
	June	0	9	51	5	30	7
	September	5	1	44	6	27	7
	December	2	7	50	2	27	5
2009	March	4	4	71	5	52	7
	June	4	9	68	8	29	8
	September	2	9	51	7	41	8
	December	2	10	42	4	37	4
2010	March	3	11	55	7	24	5
	June	0	5	48	4	35	3
	September	4	9	27	2	36	5
	December	1	7	45	3	33	3
2011	March	1	1	44	3	36	4
	June	3	3	46	7	25	2
	September	3	4	45	6	26	2
	December	4	6	42	2	34	8
2012	March	4	8	49	3	19	9
	June	2	5	61	6	29	9
	September	4	11	55	8	52	6
	December	3	9	52	7	27	2
2013	March	4	14	66	7	48	5
	June	4	8	48	8	54	3
	September	4	7	40	13	65	4
	December						

Graph 4.5: Notified cases of infectious syphilis by non-metropolitan LHD and quarter

Infectious Syphilis Notifications for NSW (excluding congenital infections), by non metropolitan LHD and quarter.
 01 January 2007 to 30 September 2013
 No adjustment made for incomplete quarter.



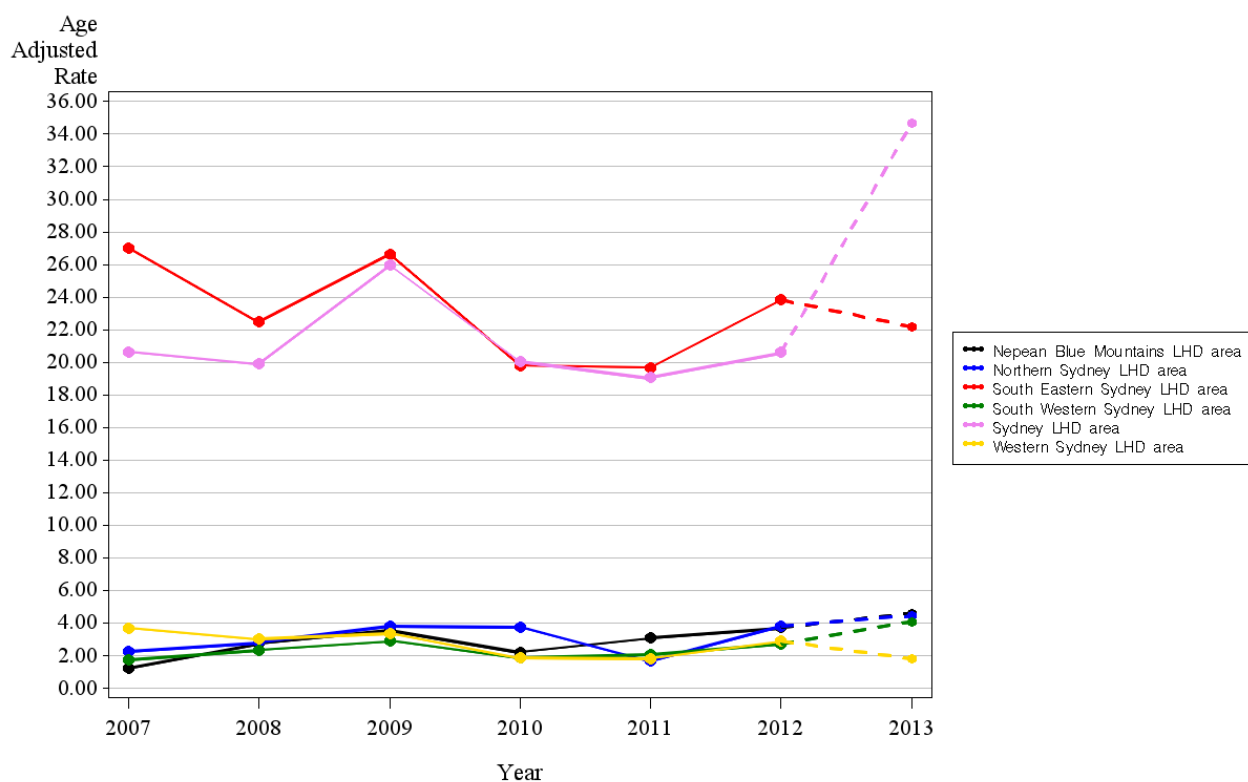
Source: NCIMS (SAPHaRI)

Table 4.5: Notified cases of infectious syphilis by non-metropolitan LHD and quarter

Year	Quarter	Central Coast	Far West	Hunter New England	Illawarra Shoalhaven	Mid North Coast	Murrumbidgee	Northern NSW	NSW not further specified	Southern NSW	Western NSW
2007	March	0	0	4	6	0	0	0	0	0	0
	June	0	0	4	1	0	0	2	0	0	0
	September	1	1	1	0	0	0	2	0	1	1
	December	1	0	4	0	1	1	1	0	0	3
2008	March	2	0	3	2	0	2	1	0	0	0
	June	1	0	1	2	0	0	0	0	0	1
	September	1	1	0	0	0	1	1	0	0	0
	December	0	0	4	2	1	1	5	0	1	0
2009	March	2	0	3	0	1	0	2	1	0	0
	June	0	0	4	3	0	2	0	0	0	1
	September	1	0	3	1	0	2	1	0	1	0
	December	2	0	7	1	0	0	1	0	1	2
2010	March	5	0	4	1	0	1	0	0	0	4
	June	1	1	4	0	0	1	1	2	0	1
	September	0	0	3	0	1	2	0	0	1	1
	December	0	0	2	1	0	0	0	1	0	1
2011	March	0	0	4	5	1	0	1	1	5	4
	June	0	0	2	3	0	0	1	0	2	0
	September	1	0	5	3	2	0	1	1	2	1
	December	0	0	3	5	0	0	1	1	2	0
2012	March	1	1	3	6	0	0	3	0	0	0
	June	0	1	6	2	3	3	1	0	1	3
	September	5	0	3	0	0	2	1	0	0	3
	December	3	0	8	6	0	0	3	0	0	3
2013	March	1	0	11	2	3	1	5	0	1	2
	June	0	0	5	2	0	1	4	0	0	1
	September	0	0	5	1	5	3	1	1	0	1
	December										

Graph 4.6: Notified rates of infectious syphilis by metropolitan LHD and year

Infectious Syphilis Notifications for NSW (excluding congenital infections). Age adjusted rate per 100,000 by Sydney metropolitan LHD and year. 01 January 2007 to 30 September 2013. Adjusted for most recent year being incomplete.



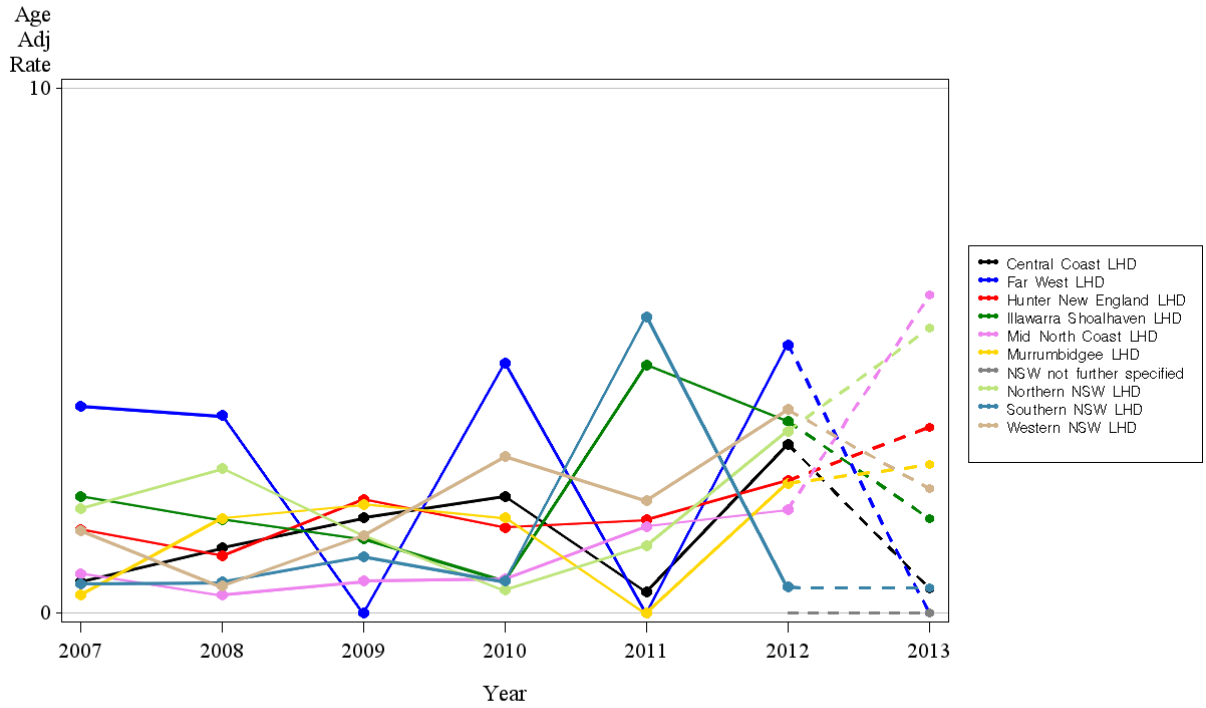
Source: NCIMS (SAPHaRI)

Table 4.6: Notified rates of infectious syphilis by metropolitan LHD and year

Year	Nepean Blue Mountains	Northern Sydney	South Eastern Sydney	South Western Sydney	Sydney	Western Sydney
2007	1.2	2.3	27.0	1.8	20.7	3.7
2008	2.8	2.8	22.5	2.4	19.9	3.0
2009	3.5	3.8	26.6	2.9	26.0	3.4
2010	2.2	3.8	19.8	1.9	20.1	1.9
2011	3.1	1.7	19.7	2.0	19.1	1.8
2012	3.7	3.8	23.8	2.7	20.6	2.9
2013	4.6	4.5	22.2	4.1	34.7	1.8

Graph 4.7: Notified rates of infectious syphilis by non-metropolitan LHD and year

Infectious Syphilis Notifications for NSW (excluding congenital infections). Age adjusted rate per 100,000 by non metropolitan LHD and year. 01 January 2007 to 30 September 2013. Adjusted for most recent year being incomplete.



Source: NCIMS (SAPHaRI)

Table 4.7: Notified rates of infectious syphilis by non-metropolitan LHD and year

Year	Central Coast	Far West	Hunter New England	Illawarra Shoalhaven	Mid North Coast	Murrumbidgee	Northern NSW	NSW not further specified	Southern NSW	Western NSW
2007	1	4	2	2	1	0	2	0	1	2
2008	1	4	1	2	0	2	3	0	1	1
2009	2	0	2	1	1	2	1	0	1	1
2010	2	5	2	1	1	2	0	0	1	3
2011	0	0	2	5	2	0	1	0	6	2
2012	3	5	3	4	2	2	3	0	0	4
2013	0	0	4	2	6	3	5	0	0	2

5. Lymphogranuloma venereum (LGV)

All LGV notifications have been in men.

Graph 5.1: Notified cases of LGV for NSW by quarter

