

**Health Protection NSW
Communicable Diseases Branch**

**Sexually Transmitted Infections Notification Data
4th Quarterly Report 2013**

Contents

1. Summary & Data Caveats.....	3
2. Chlamydia.....	4
Graph 2.1: Notified cases and rates of chlamydia for NSW by quarter.....	4
Table 2.1: Notified cases and rates of chlamydia for NSW by quarter.....	5
Graph 2.2: Notified cases of chlamydia by sex and quarter.....	6
Table 2.2: Notified cases of chlamydia by sex and quarter.....	7
Graph 2.3: Notified cases of chlamydia by age group and quarter.....	8
Table 2.3: Notified cases of chlamydia by age group and quarter.....	9
Graph 2.4: Notified cases of chlamydia by metropolitan LHD and quarter.....	10
Table 2.4: Notified cases of chlamydia by metropolitan LHD and quarter.....	11
Graph 2.5: Notified cases of chlamydia by non-metropolitan LHD and quarter.....	12
Table 2.5: Notified cases of chlamydia by non-metropolitan LHD and quarter.....	13
Graph 2.6: Notified rates of chlamydia by metropolitan LHD and year.....	14
Table 2.6: Notified rates of chlamydia by metropolitan LHD and year.....	14
Graph 2.7: Notified rates of chlamydia by non-metropolitan LHD and year.....	15
Table 2.7: Notified rates of chlamydia by non-metropolitan LHD and year.....	16
3. Gonorrhoea.....	17
Graph 3.1: Notified cases and rates of gonorrhoea for NSW by quarter.....	17
Table 3.1: Notified cases and rates of gonorrhoea for NSW by quarter.....	18
Graph 3.2: Notified cases of gonorrhoea by sex and quarter.....	19
Table 3.2: Notified cases of gonorrhoea by sex and quarter.....	20
Graph 3.3: Notified cases of gonorrhoea by age group and quarter.....	21
Table 3.3: Notified cases of gonorrhoea by age group and quarter.....	22
Graph 3.4: Notified cases of gonorrhoea by metropolitan LHD and quarter.....	23
Table 3.4: Notified cases of gonorrhoea by metropolitan LHD and quarter.....	24
Table 3.5: Notified cases of gonorrhoea by non-metropolitan LHD and quarter.....	26
Graph 3.6: Notified rates of gonorrhoea by metropolitan LHD and year.....	27
Table 3.6: Notified rates of gonorrhoea by metropolitan LHD and year.....	27
Graph 3.7: Notified rates of gonorrhoea by non-metropolitan LHD and year.....	28
Table 3.7: Notified rates of gonorrhoea by non-metropolitan LHD and year.....	29
4. Syphilis.....	30
Graph 4.1: Notified cases and rates of infectious syphilis for NSW by quarter.....	30
Table 4.1: Notified cases and rates of infectious syphilis for NSW by quarter.....	31
Graph 4.2: Notified cases of infectious syphilis by sex and quarter.....	32
Table 4.2: Notified cases of infectious syphilis by sex and quarter.....	33
Graph 4.3: Notified cases of infectious syphilis by age group and quarter.....	34
Table 4.3: Notified cases of infectious syphilis by age group and quarter.....	35
Graph 4.4: Notified cases of infectious syphilis by metropolitan LHD and quarter.....	36
Table 4.4: Notified cases of infectious syphilis by metropolitan LHD and quarter.....	37
Graph 4.5: Notified cases of infectious syphilis by non-metropolitan LHD and quarter.....	38
Table 4.5: Notified cases of infectious syphilis by non-metropolitan LHD and quarter.....	39
Graph 4.6: Notified rates of infectious syphilis by metropolitan LHD and year.....	40
Table 4.6: Notified rates of infectious syphilis by metropolitan LHD and year.....	40
Graph 4.7: Notified rates of infectious syphilis by non-metropolitan LHD and year.....	41
Table 4.7: Notified rates of infectious syphilis by non-metropolitan LHD and year.....	42
5. Lymphogranuloma venereum (LGV).....	43
Graph 5.1: Notified cases of LGV for NSW by quarter.....	43
Table 5.1: Notified cases of LGV by age group and quarter.....	44

1. Summary & Data Caveats

This report includes notification data for four notifiable sexually transmitted infections (STIs): chlamydia, gonorrhoea, infectious syphilis and lymphogranuloma venereum (LGV), in NSW residents for the period 1 October – 31 December 2013. Information on HIV is reported separately and is available on the NSW Health website (<http://www.health.nsw.gov.au/endinghiv/Pages/tools-and-data.aspx>)

STI data are extracted from the New South Wales Notifiable Conditions Information Management System (NCIMS). Data entry may be completed several weeks after initial notification. Notification of a case some time after diagnosis, whilst uncommon, does occur.

During this quarter, 5240 cases of chlamydia were reported. Chlamydia notifications show an increasing trend from 2007 to 2012, however have plateaued during recent quarters. Chlamydia notifications remain more common in females and in older teenagers/young adults. Chlamydia notification rates are dependent to an extent on testing rates. Quarterly and annual chlamydia test rates in NSW are published in the Communicable Diseases Report of the NSW Public Health Bulletin, available at: <http://www.publish.csiro.au/nid/226.htm>

Gonorrhoea notifications and rates increased from late 2010 to mid-2012, and have since plateaued with 1006 cases notified in this quarter. Gonorrhoea is predominantly notified in males, notably those aged 25 – 34 years, and is thought to be mainly associated with male to male sex. Most cases are notified in Sydney and South East Sydney Local Health Districts.

Infectious syphilis notifications have shown an increasing trend and 145 cases were notified this quarter. The predominance of infection in adult males living in Sydney and South East Sydney Local Health Districts is more pronounced than for gonorrhoea.

Two cases of LGV were reported in this quarter, both in men. A small outbreak earlier in the year appears to be resolving. LGV is predominately notified in men aged 35 years and over in Sydney and South Eastern Sydney Local Health District.

The NSW Sexually Transmissible Infections Plan 2014-2018 is currently under development and is due for release in 2014.

All data presented in this report is based on the onset date of illness. However, for the large majority of cases, date of onset is not reported and so the onset date field defaults to either clinical specimen collection date, laboratory report date or notification date, whichever is the earlier.

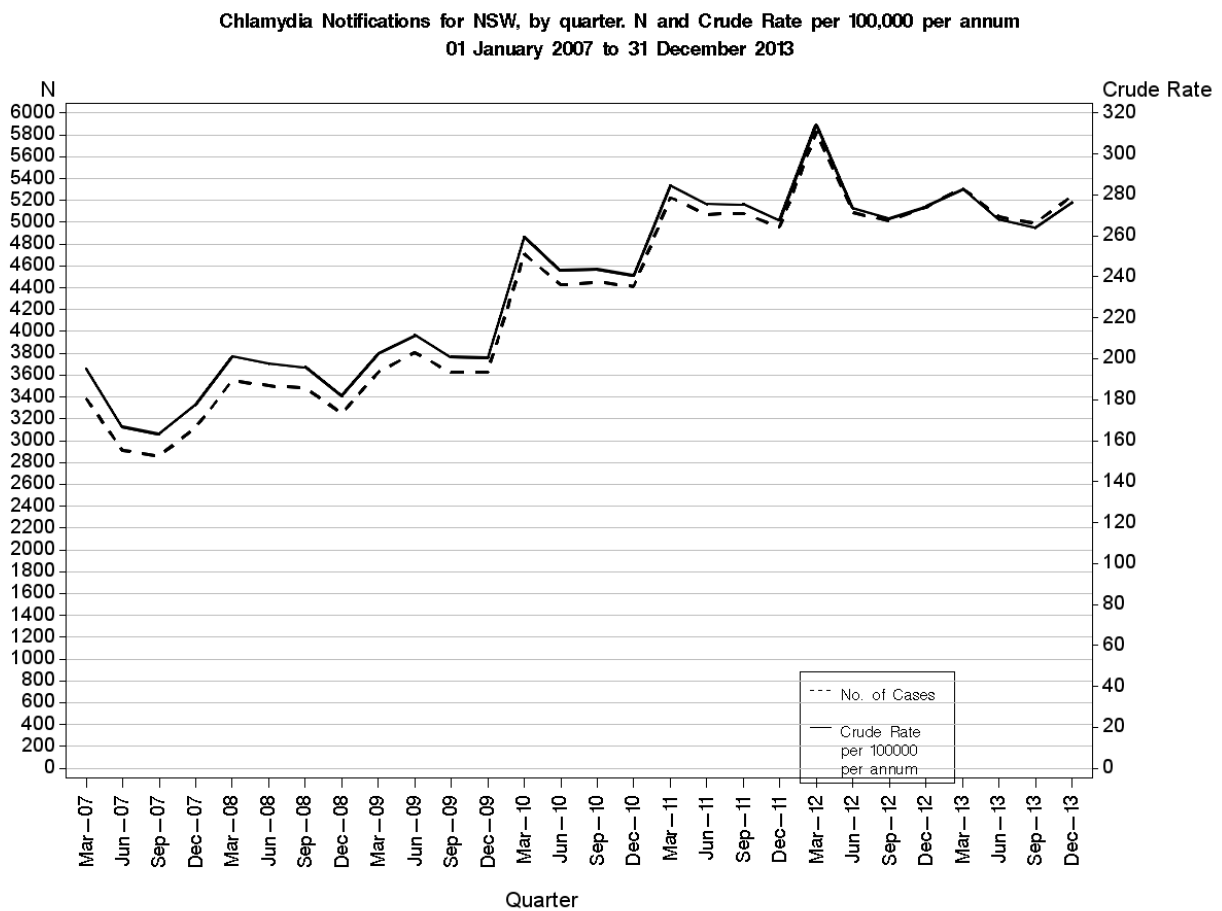
Data for this report were extracted on 20 March 2014. Notifications from Justice Health are excluded.

2. Chlamydia

Chlamydia trachomatis infection of any site is notified by laboratories. This report presents cases where the condition has been classified as 'chlamydia' on NCIMS, and excludes those that have been classified as 'chlamydia – congenital'. A confirmed case of chlamydia requires isolation of Chlamydia trachomatis or detection of C. trachomatis through NAT, immunofluorescence, EIA (with blocking antibody) or culture.

Chlamydia infections are not routinely followed up by the Public Health Units so detailed information (eg Aboriginality, exposure) is not generally available.

Graph 2.1: Notified cases and rates of chlamydia for NSW by quarter

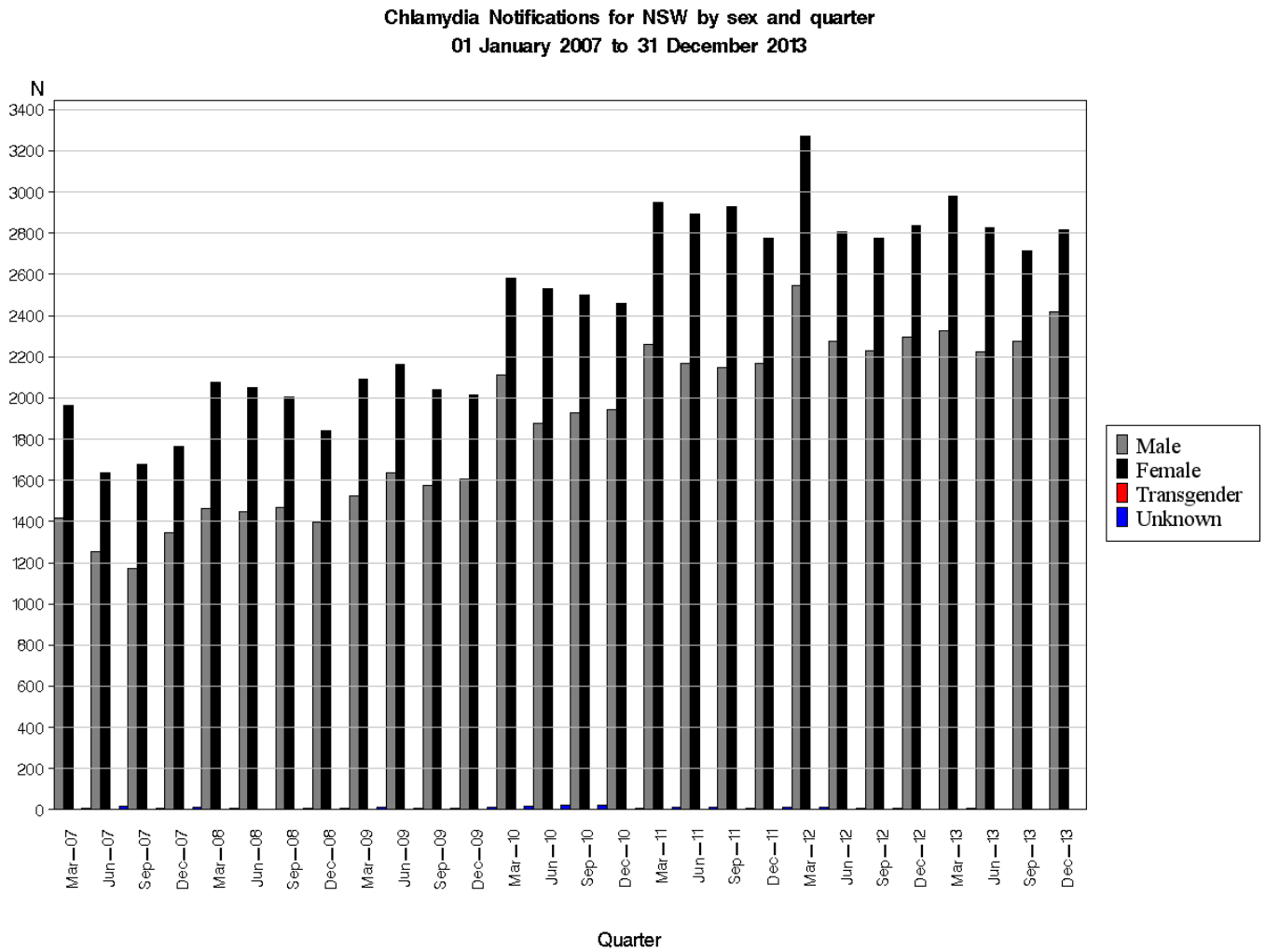


Note: Became notifiable in Aug 1998
Source: NCIMS (SAPHaRI)

Table 2.1: Notified cases and rates of chlamydia for NSW by quarter

Year	Quarter	No. of notifications	Crude Rate per 100,000 per annum
2007	March	3389	195
	June	2909	167
	September	2860	163
	December	3121	178
2008	March	3550	201
	June	3502	198
	September	3484	196
	December	3249	182
2009	March	3630	202
	June	3805	211
	September	3626	201
	December	3632	201
2010	March	4712	259
	June	4430	243
	September	4451	244
	December	4413	241
2011	March	5226	285
	June	5073	276
	September	5083	275
	December	4956	268
2012	March	5830	314
	June	5091	274
	September	5013	269
	December	5139	274
2013	March	5314	283
	June	5052	268
	September	4993	264
	December	5240	276

Graph 2.2: Notified cases of chlamydia by sex and quarter

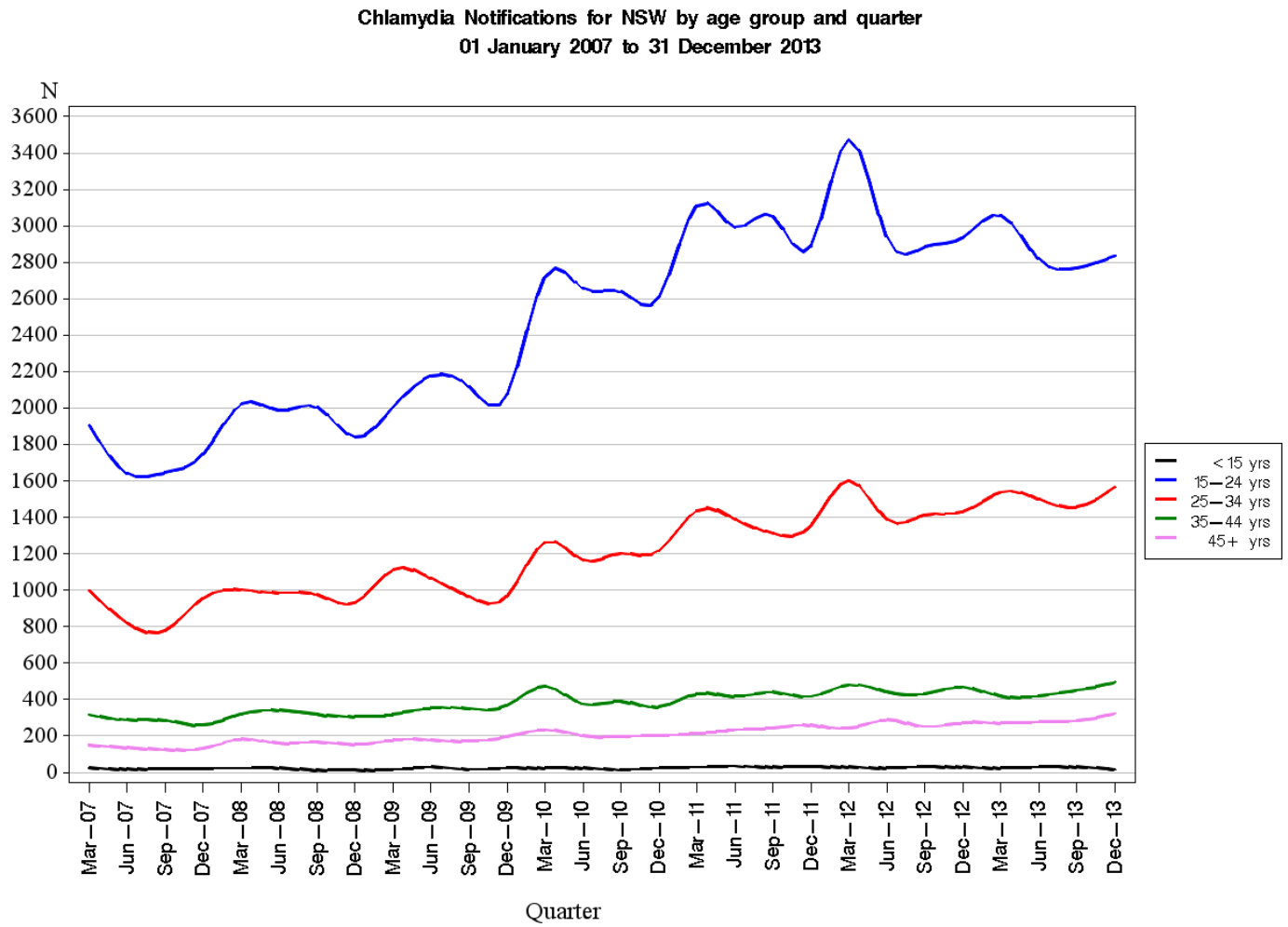


Note: Became notifiable in Aug 1998
Source: NCIMS (SAPHaRI)

Table 2.2: Notified cases of chlamydia by sex and quarter

Year	Quarter	Females	Males	Transgender	Unknown
2007	March	1965	1419	0	5
	June	1638	1255	0	16
	September	1679	1174	0	7
	December	1763	1348	0	10
2008	March	2077	1463	1	9
	June	2052	1447	0	3
	September	2007	1469	1	7
	December	1842	1399	1	7
2009	March	2094	1525	1	10
	June	2162	1635	0	8
	September	2042	1576	0	8
	December	2016	1606	0	10
2010	March	2581	2111	0	20
	June	2533	1876	0	21
	September	2502	1926	0	23
	December	2461	1944	0	8
2011	March	2951	2260	2	13
	June	2895	2167	0	11
	September	2928	2149	1	5
	December	2778	2168	0	10
2012	March	3271	2545	1	13
	June	2808	2276	0	7
	September	2777	2229	0	7
	December	2838	2298	1	2
2013	March	2982	2324	1	7
	June	2826	2222	0	4
	September	2714	2276	0	3
	December	2819	2417	0	4

Graph 2.3: Notified cases of chlamydia by age group and quarter



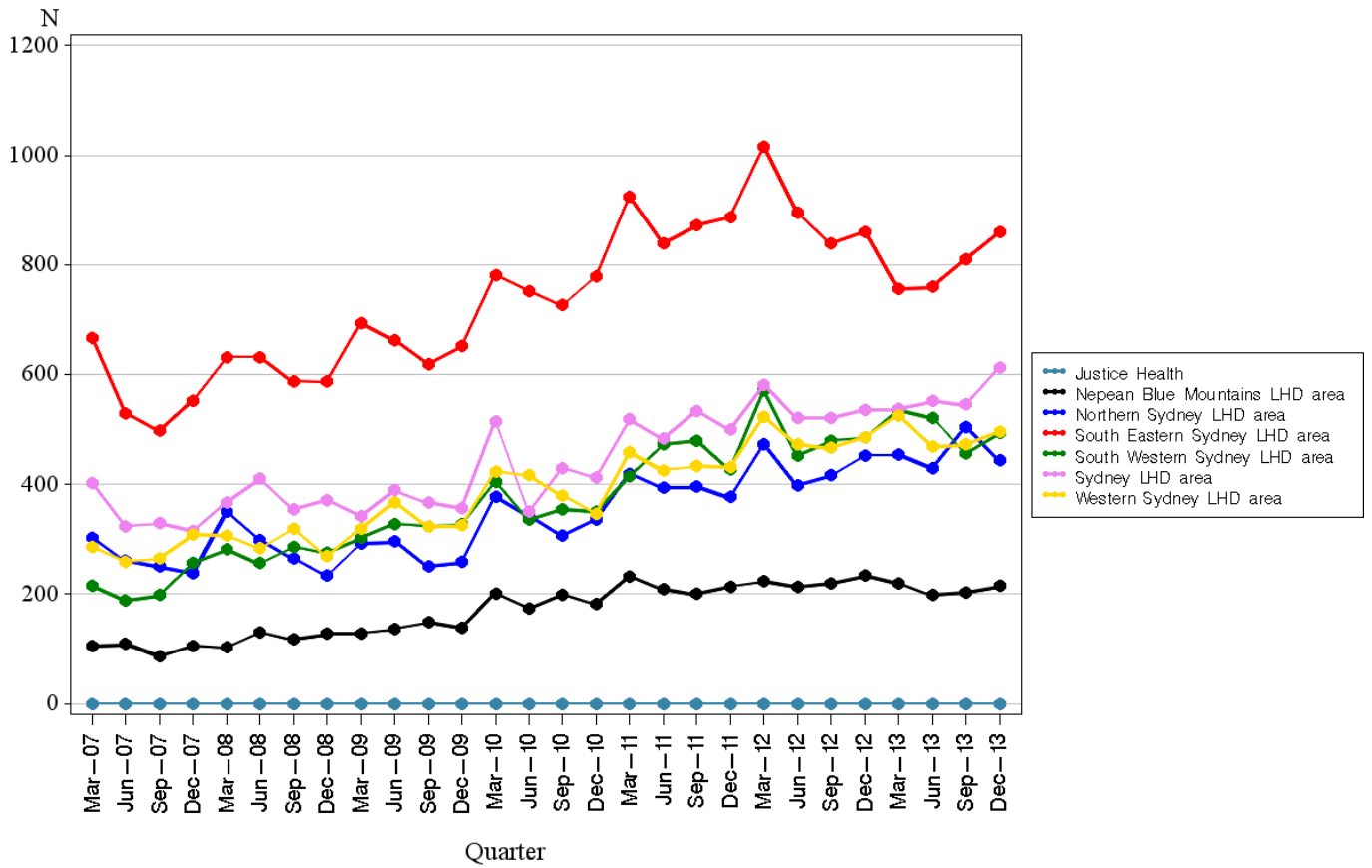
Note: Became notifiable in Aug 1998
Source: NCIMS (SAPHaRI)

Table 2.3: Notified cases of chlamydia by age group and quarter

Year	Quarter	<15yrs	15-24yrs	25-34yrs	35-44yrs	45+yrs
2007	March	25	1903	996	316	149
	June	19	1642	822	290	136
	September	19	1648	781	286	126
	December	22	1748	956	262	133
2008	March	23	2021	1003	320	183
	June	24	1989	986	342	161
	September	14	2004	977	321	168
	December	16	1841	933	306	153
2009	March	17	2003	1112	320	178
	June	30	2176	1065	354	179
	September	17	2118	967	351	173
	December	25	2074	969	368	196
2010	March	25	2717	1262	473	235
	June	25	2658	1168	376	203
	September	16	2639	1203	391	198
	December	25	2609	1216	359	203
2011	March	29	3111	1437	433	216
	June	35	2994	1391	418	235
	September	30	3052	1314	441	244
	December	32	2890	1354	417	261
2012	March	31	3471	1603	481	243
	June	26	2943	1389	443	288
	September	31	2884	1413	433	252
	December	30	2935	1430	469	274
2013	March	25	3059	1538	420	271
	June	30	2820	1502	421	277
	September	30	2768	1457	452	284
	December	18	2835	1568	495	322

Graph 2.4: Notified cases of chlamydia by metropolitan LHD and quarter

Chlamydia Notifications for NSW, by Sydney metropolitan LHD and quarter.
 01 January 2007 to 31 December 2013
 No adjustment made for incomplete quarter.



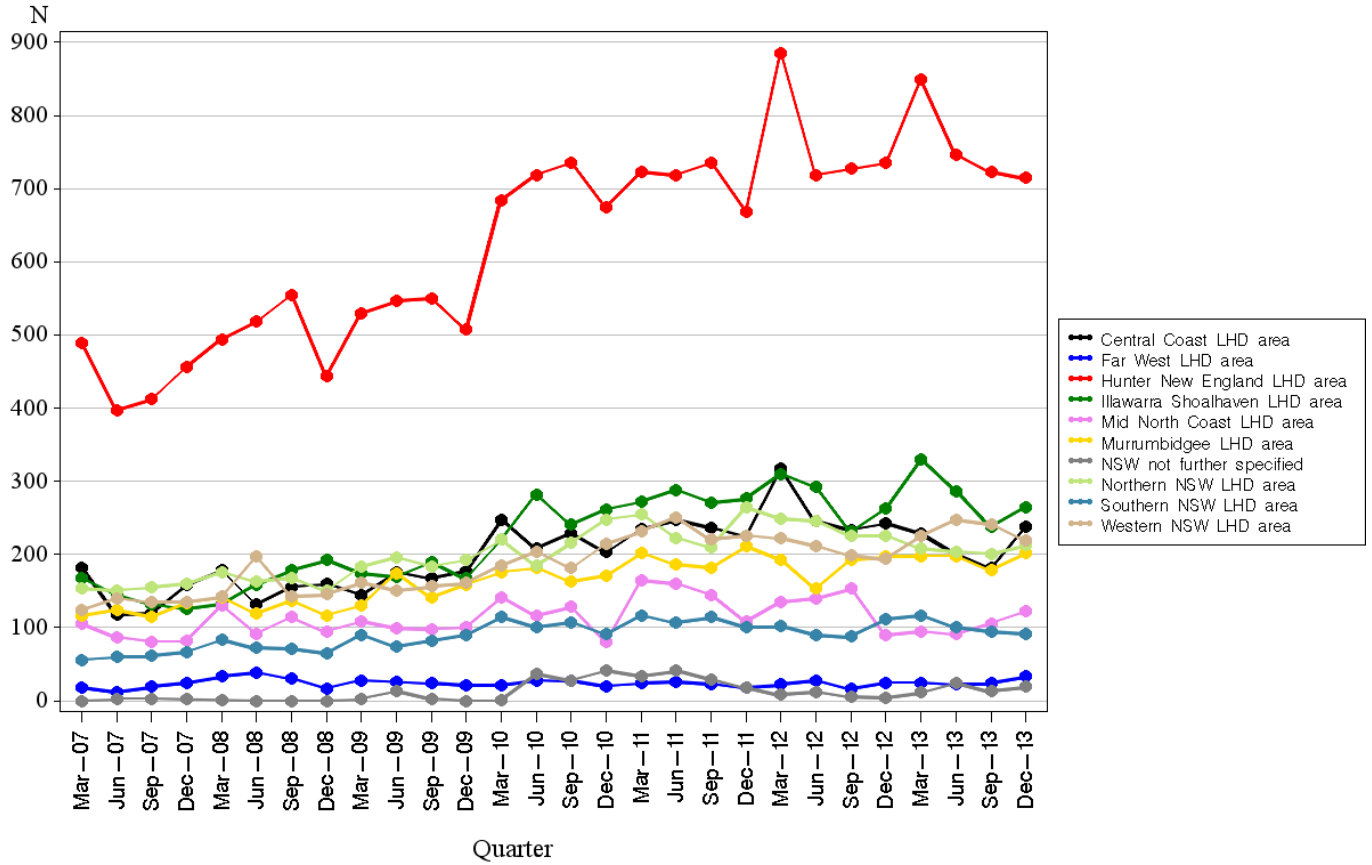
Note: Became notifiable in Aug 1998
 Source: NCIMS (SAPHaRI)

Table 2.4: Notified cases of chlamydia by metropolitan LHD and quarter

Year	Quarter	Nepean Blue Mountains	Northern Sydney	South Eastern Sydney	South Western Sydney	Sydney	Western Sydney
2007	March	105	303	666	215	402	287
	June	109	261	530	188	324	260
	September	87	250	498	198	329	265
	December	106	239	553	257	315	308
2008	March	102	350	632	281	368	307
	June	131	299	632	256	410	283
	September	118	265	588	287	354	319
	December	127	233	587	276	371	269
2009	March	129	292	693	303	342	319
	June	137	296	662	328	389	368
	September	148	250	619	324	367	323
	December	138	258	652	327	357	325
2010	March	201	377	781	405	515	424
	June	174	343	752	335	350	416
	September	199	306	726	354	430	380
	December	182	336	779	351	412	347
2011	March	232	420	925	415	518	458
	June	209	394	840	473	483	426
	September	200	396	872	480	534	434
	December	214	377	888	428	500	432
2012	March	223	473	1016	570	581	524
	June	213	398	896	453	520	473
	September	220	416	839	480	521	466
	December	234	453	860	485	536	485
2013	March	220	454	756	535	538	525
	June	198	430	760	522	552	469
	September	203	505	810	457	545	473
	December	215	444	859	493	613	497

Graph 2.5: Notified cases of chlamydia by non-metropolitan LHD and quarter

Chlamydia Notifications for NSW, by non metropolitan LHD and quarter.
01 January 2007 to 31 December 2013
 No adjustment made for incomplete quarter.

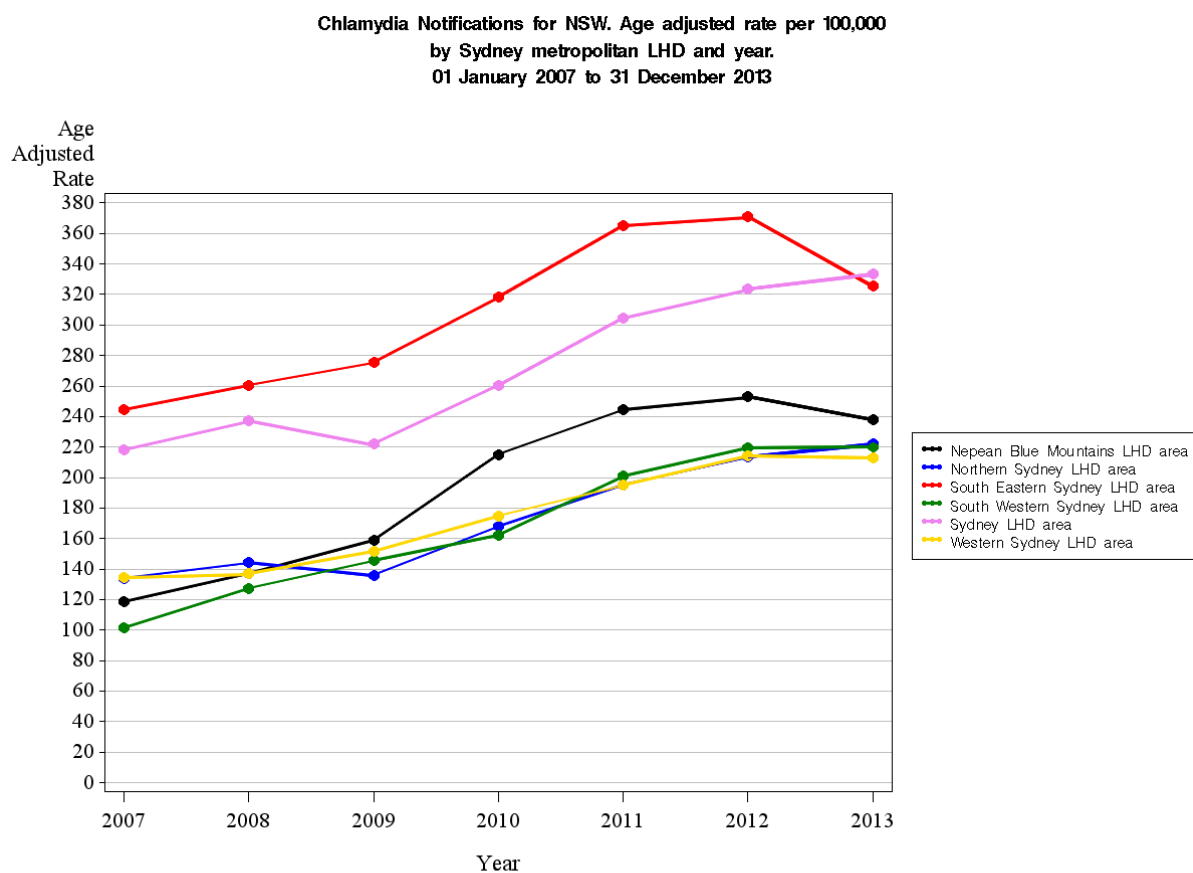


Note: Became notifiable in Aug 1998
 Source: NCIMS (SAPHaR1)

Table 2.5: Notified cases of chlamydia by non-metropolitan LHD and quarter

Year	Quarter	NSW not further specified									
		Central Coast	Far West	Hunter New England	Illawarra Shoalhaven	Mid North Coast	Murrumbidgee	Northern NSW	Southern NSW	Western NSW	
2007	March	182	18	489	168	105	116	153	0	56	124
	June	118	12	397	145	87	124	151	3	60	140
	September	120	19	412	132	81	115	155	3	61	135
	December	158	24	456	125	82	134	160	2	67	135
2008	March	178	33	494	132	130	141	176	1	83	142
	June	132	39	518	159	92	119	163	0	72	197
	September	156	31	555	178	114	137	168	0	71	143
	December	160	17	444	192	95	117	150	0	65	146
2009	March	145	28	530	174	108	130	183	3	90	161
	June	176	26	546	170	99	174	196	13	74	151
	September	167	24	550	189	98	141	184	3	82	157
	December	177	21	507	167	101	159	192	0	90	161
2010	March	247	21	684	220	141	176	220	1	114	185
	June	208	28	719	282	116	182	185	36	100	204
	September	229	27	736	241	128	163	216	28	107	181
	December	203	20	675	262	80	171	248	41	91	215
2011	March	235	24	723	272	164	202	255	34	117	232
	June	247	26	719	288	160	186	223	41	107	251
	September	237	23	736	271	145	182	210	29	114	220
	December	225	18	669	277	108	211	264	18	101	226
2012	March	317	22	885	310	135	193	249	8	102	222
	June	245	28	719	292	140	154	246	12	90	212
	September	234	16	727	231	153	193	225	5	88	199
	December	242	25	735	263	89	197	226	4	111	194
2013	March	228	25	849	330	95	198	208	11	117	225
	June	200	23	747	287	91	198	204	24	100	247
	September	181	24	723	238	106	179	201	13	94	241
	December	238	33	715	265	123	202	213	19	92	219

Graph 2.6: Notified rates of chlamydia by metropolitan LHD and year



Note: Became notifiable in Aug 1998
Source: NCIMS (SAPHaRI)

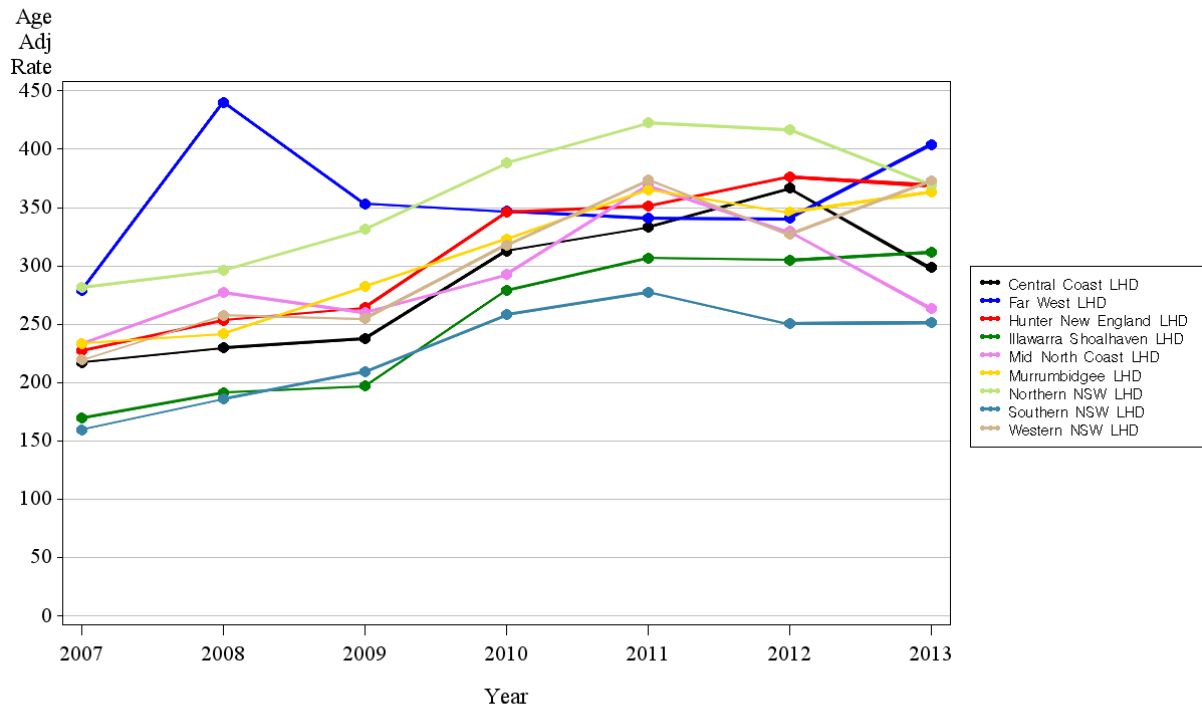
Table 2.6: Notified rates of chlamydia by metropolitan LHD and year

Chlamydia notifications for NSW, age adjusted rate per 100,000 by Sydney metropolitan LHD and year, 01 January 2007 to 31 December 2013

Year	Nepean Blue Mountains	Northern Sydney	South Eastern Sydney	South Western Sydney	Sydney	Western Sydney
2007	119	134	245	101	218	134
2008	137	144	261	128	237	137
2009	159	136	275	146	222	152
2010	215	168	318	162	260	175
2011	244	195	365	201	305	195
2012	253	214	371	220	324	215
2013	238	222	326	220	333	213

Graph 2.7: Notified rates of chlamydia by non-metropolitan LHD and year

Chlamydia Notifications for NSW. Age adjusted rate per 100,000
by non metropolitan LHD and year.
01 January 2007 to 31 December 2013



Note: Became notifiable in Aug 1998
Source: NCIMS (SAPHaR1)

Table 2.7: Notified rates of chlamydia by non-metropolitan LHD and year

Chlamydia notifications for NSW, age adjusted rate per 100,000 by non-metropolitan LHD and year, 01 January 2007 to 31 December 2013,

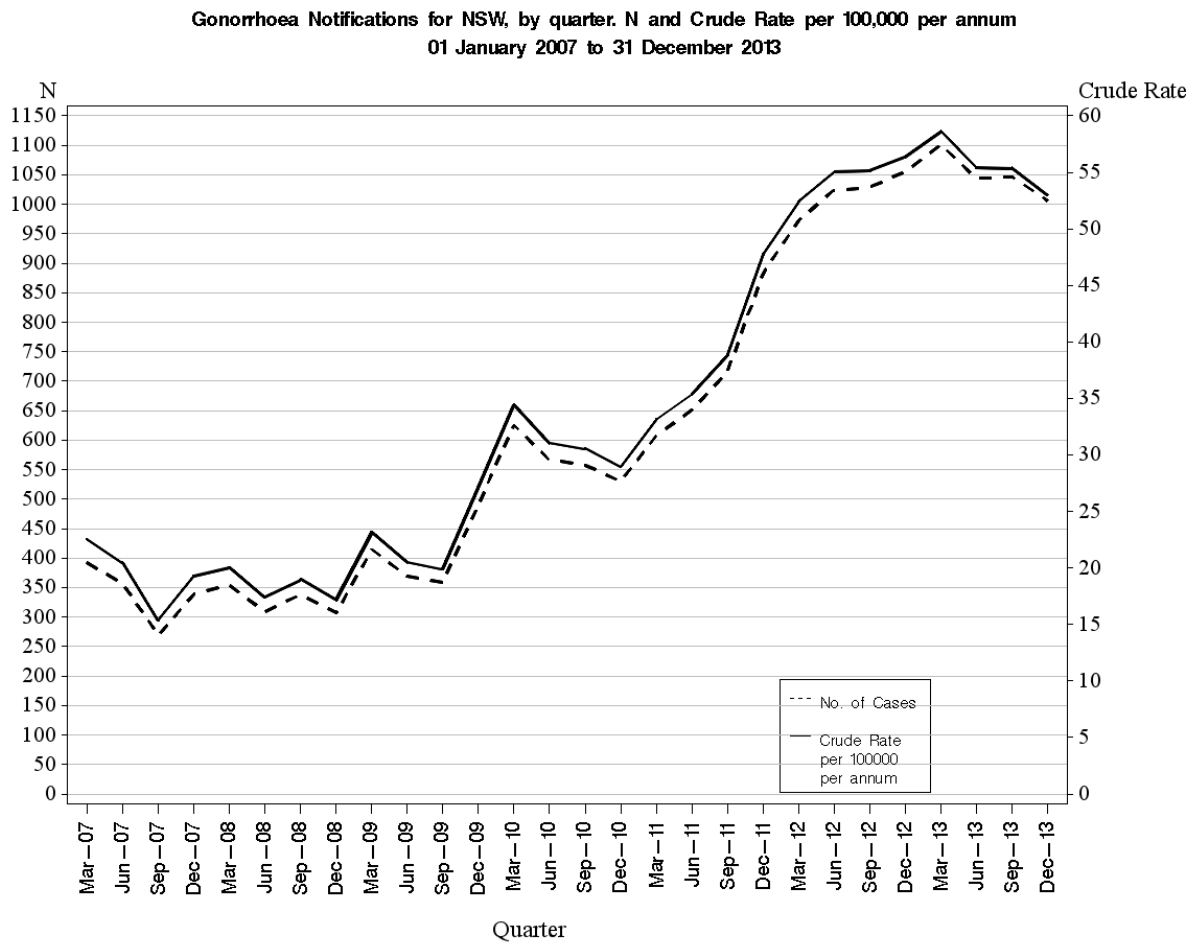
Year	Central Coast	Far West	Hunter New England	Illawarra Shoalhaven	Mid North Coast	Murrumbidgee	Northern NSW	Southern NSW	Western NSW
2007	217	279	227	170	233	234	282	160	219
2008	230	440	253	191	277	242	297	186	258
2009	238	353	265	197	260	282	332	209	255
2010	313	347	346	279	293	323	388	258	318
2011	333	341	351	307	368	365	423	277	374
2012	366	341	376	305	329	346	417	250	327
2013	298	404	369	312	264	364	370	252	373

3. Gonorrhoea

A confirmed case requires isolation of *Neisseria gonorrhoeae* from culture or by NAT.

Gonorrhoea infections are not routinely followed up by the Public Health Units so detailed information (eg Aboriginality, exposure) is not generally available. An enhanced surveillance project that was piloted in South East Sydney in early 2013, was rolled out to the rest of NSW in the second half of 2013. Analysis and evaluation is currently underway.

Graph 3.1: Notified cases and rates of gonorrhoea for NSW by quarter



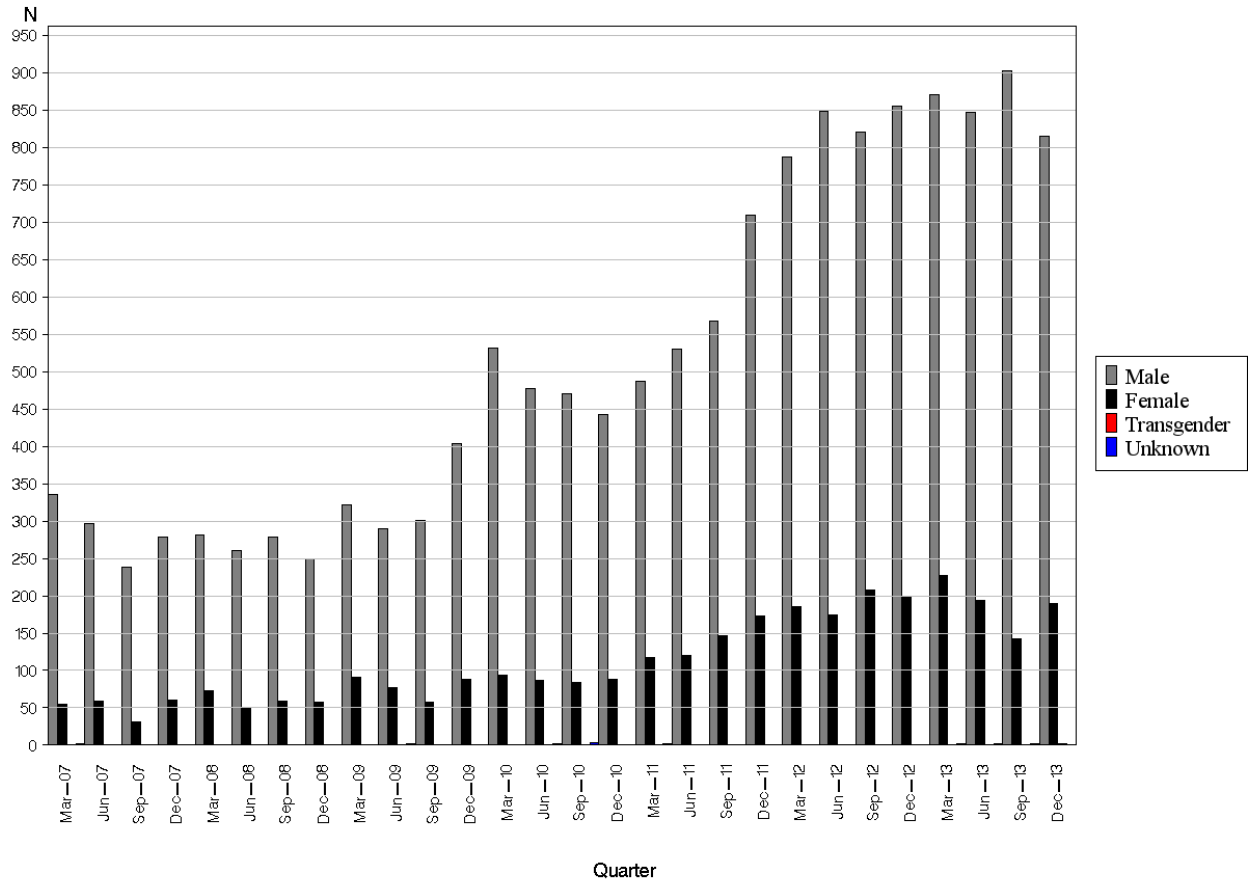
Source: NCIMS (SAPHaRI)

Table 3.1: Notified cases and rates of gonorrhoea for NSW by quarter

Year	Quarter	No. of notifications	Crude rate per 100,000 per annum
2007	March	392	23
	June	357	20
	September	269	15
	December	339	19
2008	March	354	20
	June	309	17
	September	338	19
	December	307	17
2009	March	415	23
	June	369	21
	September	359	20
	December	491	27
2010	March	626	34
	June	566	31
	September	558	31
	December	530	29
2011	March	608	33
	June	651	35
	September	716	39
	December	883	48
2012	March	973	52
	June	1024	55
	September	1029	55
	December	1055	56
2013	March	1101	59
	June	1044	55
	September	1047	55
	December	1006	53

Graph 3.2: Notified cases of gonorrhoea by sex and quarter

Gonorrhoea Notifications for NSW by sex and quarter.
01 January 2007 to 31 December 2013

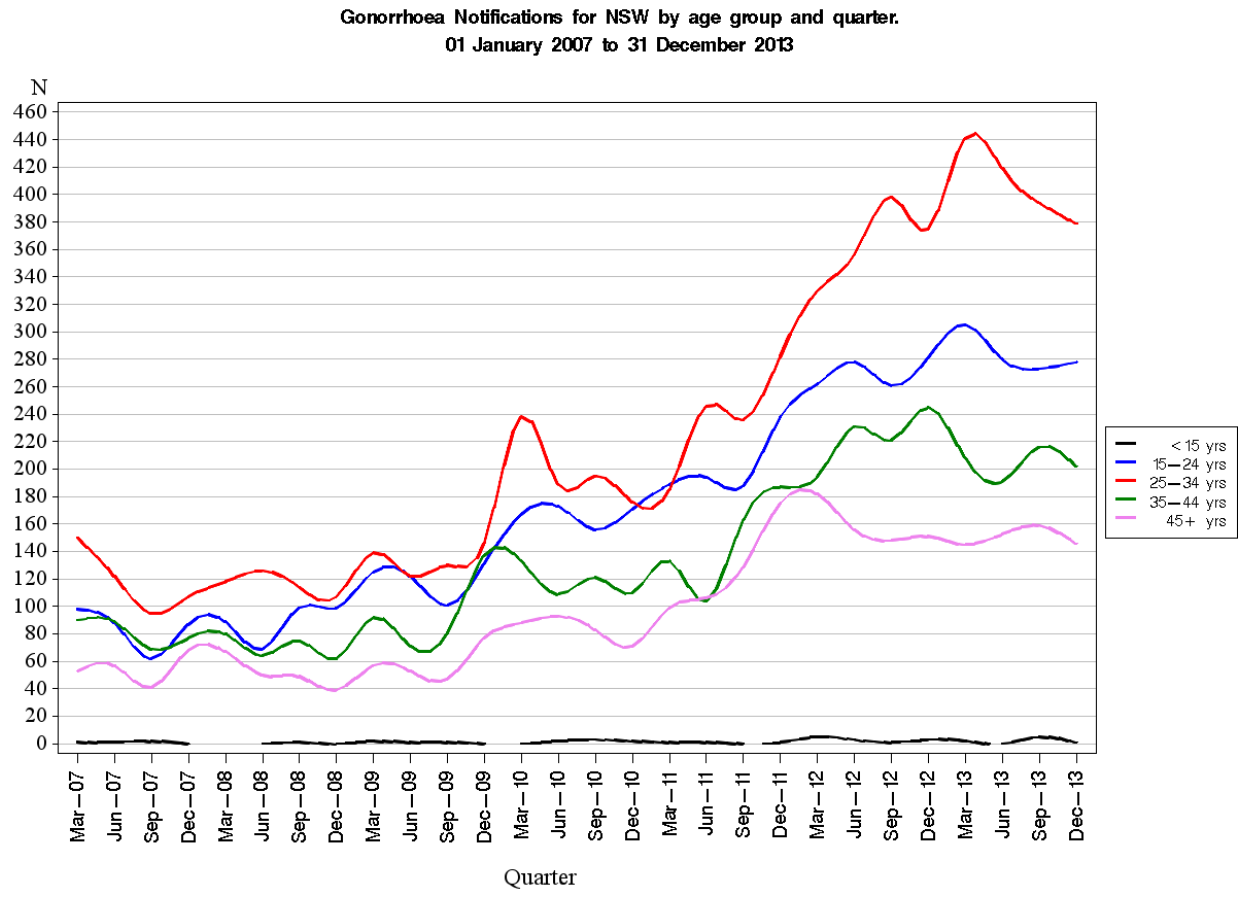


Source: NCIMS (SAPHaRI)

Table 3.2: Notified cases of gonorrhoea by sex and quarter

Year	Quarter	Females	Males	Transgender	Unknown
2007	March	55	335	0	2
	June	59	297	1	0
	September	31	238	0	0
	December	61	278	0	0
2008	March	73	281	0	0
	June	49	260	0	0
	September	59	278	0	1
	December	57	250	0	0
2009	March	91	322	1	1
	June	77	290	0	2
	September	57	301	0	1
	December	88	403	0	0
2010	March	94	531	0	1
	June	87	477	0	2
	September	84	471	0	3
	December	88	442	0	0
2011	March	118	487	1	2
	June	120	530	1	0
	September	147	568	0	1
	December	173	710	0	0
2012	March	186	787	0	0
	June	175	848	0	1
	September	208	821	0	0
	December	199	855	1	0
2013	March	227	871	1	2
	June	194	847	1	2
	September	142	903	0	2
	December	189	815	2	0

Graph 3.3: Notified cases of gonorrhoea by age group and quarter



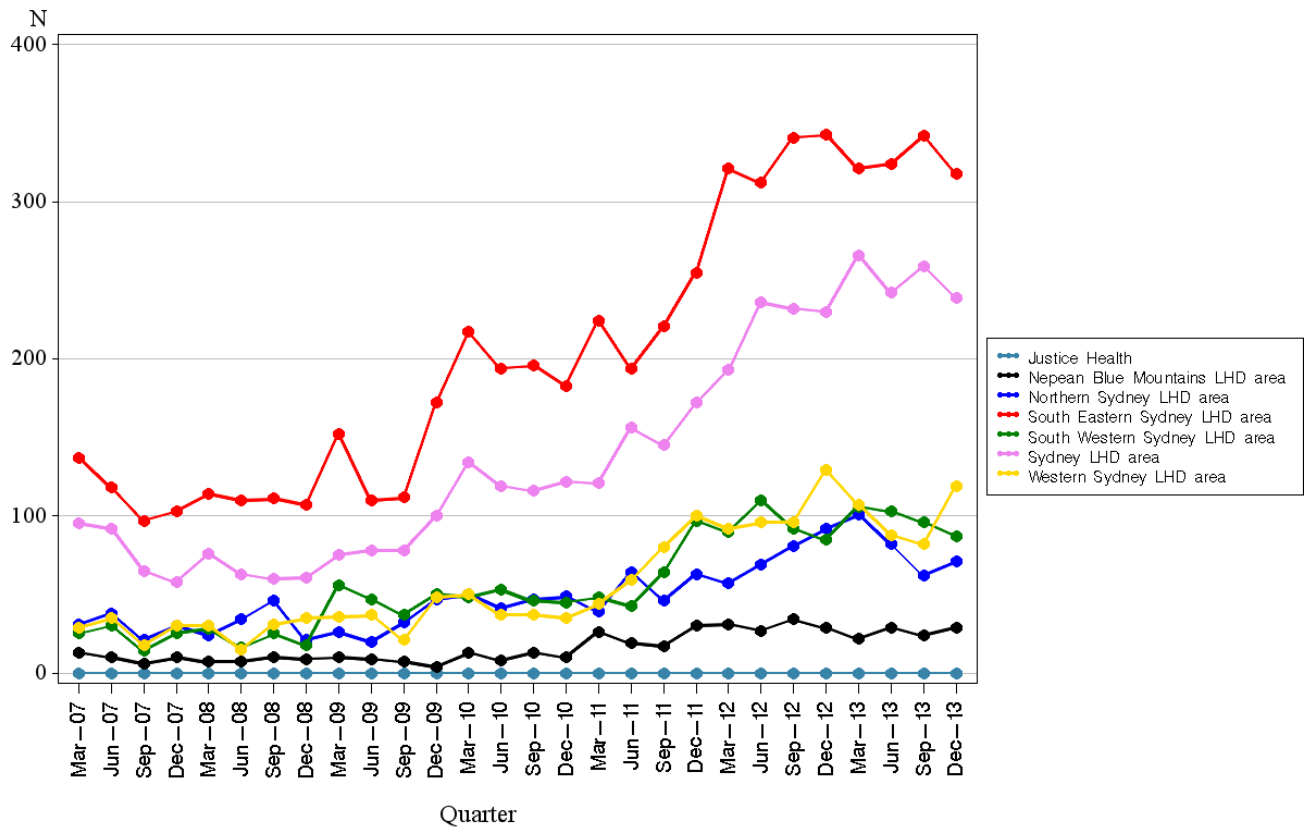
Source: NCIMS (SAPHaRI)

Table 3.3: Notified cases of gonorrhoea by age group and quarter

Year	Quarter	<15yrs	15-24yrs	25-34yrs	35-44yrs	45+yrs
2007	March	1	98	150	90	53
	June	1	88	122	89	57
	September	2	62	95	69	41
	December	0	87	107	77	68
2008	March	0	89	118	80	67
	June	0	69	126	64	50
	September	1	99	114	75	49
	December	0	99	107	62	39
2009	March	2	125	139	92	57
	June	1	122	122	71	53
	September	1	101	130	80	47
	December	0	131	146	137	77
2010	March	0	167	238	133	88
	June	2	173	189	109	93
	September	3	156	195	121	83
	December	2	171	176	110	71
2011	March	1	189	185	133	99
	June	1	194	246	104	106
	September	0	188	236	163	129
	December	1	238	282	187	175
2012	March	5	262	330	194	182
	June	3	278	356	231	156
	September	1	261	398	221	148
	December	3	281	375	245	151
2013	March	2	305	441	208	145
	June	0	280	419	191	153
	September	5	273	394	216	159
	December	1	278	379	202	146

Graph 3.4: Notified cases of gonorrhoea by metropolitan LHD and quarter

Gonorrhoea Notifications for NSW, by Sydney metropolitan LHD and year.
01 January 2007 to 31 December 2013
No adjustment made for incomplete quarter.



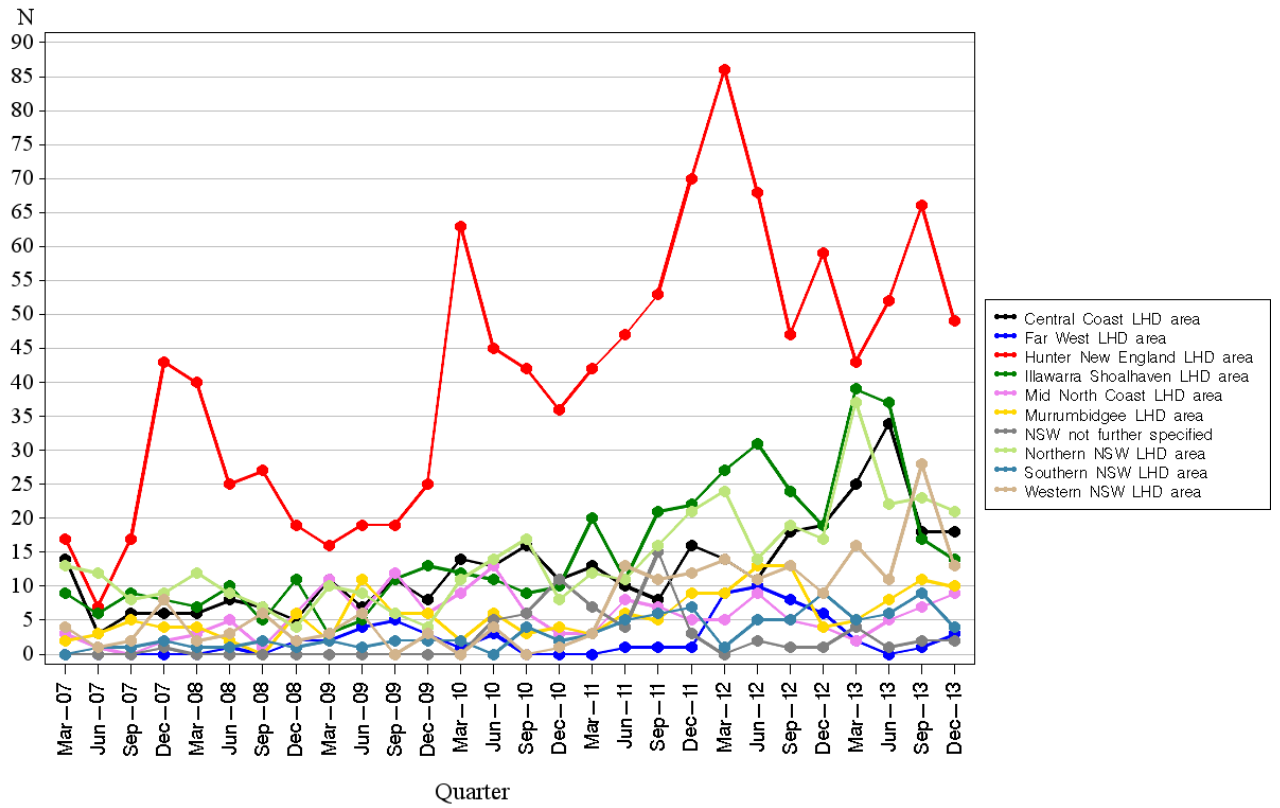
Source: NCIMS (SAPHaRI)

Table 3.4: Notified cases of gonorrhoea by metropolitan LHD and quarter

Year	Quarter	Nepean Blue Mountains	Northern Sydney	South Eastern Sydney	South Western Sydney	Sydney	Western Sydney
2007	March	13	31	137	25	95	29
	June	10	38	118	30	92	35
	September	6	21	97	14	65	18
	December	10	30	103	25	58	30
2008	March	7	24	114	28	76	30
	June	7	34	110	16	63	15
	September	10	46	111	25	60	31
	December	9	21	107	18	61	35
2009	March	10	26	152	56	75	36
	June	9	20	110	47	78	37
	September	7	32	112	37	78	21
	December	4	47	172	50	100	48
2010	March	13	50	217	48	134	50
	June	8	41	194	53	119	37
	September	13	47	196	46	116	37
	December	10	49	183	45	122	35
2011	March	26	39	224	48	121	44
	June	19	64	194	43	156	59
	September	17	46	221	64	145	80
	December	30	63	255	97	172	100
2012	March	31	57	321	90	193	92
	June	27	69	312	110	236	96
	September	34	81	341	92	232	96
	December	29	92	343	85	230	129
2013	March	22	101	321	106	266	107
	June	29	82	324	103	242	88
	September	24	62	342	96	259	82
	December	29	71	318	87	239	119

Graph 3.5: Notified cases of gonorrhoea by non-metropolitan LHD and quarter

Gonorrhoea Notifications for NSW, by non metropolitan LHD and year.
 01 January 2007 to 31 December 2013
 No adjustment made for incomplete quarter.

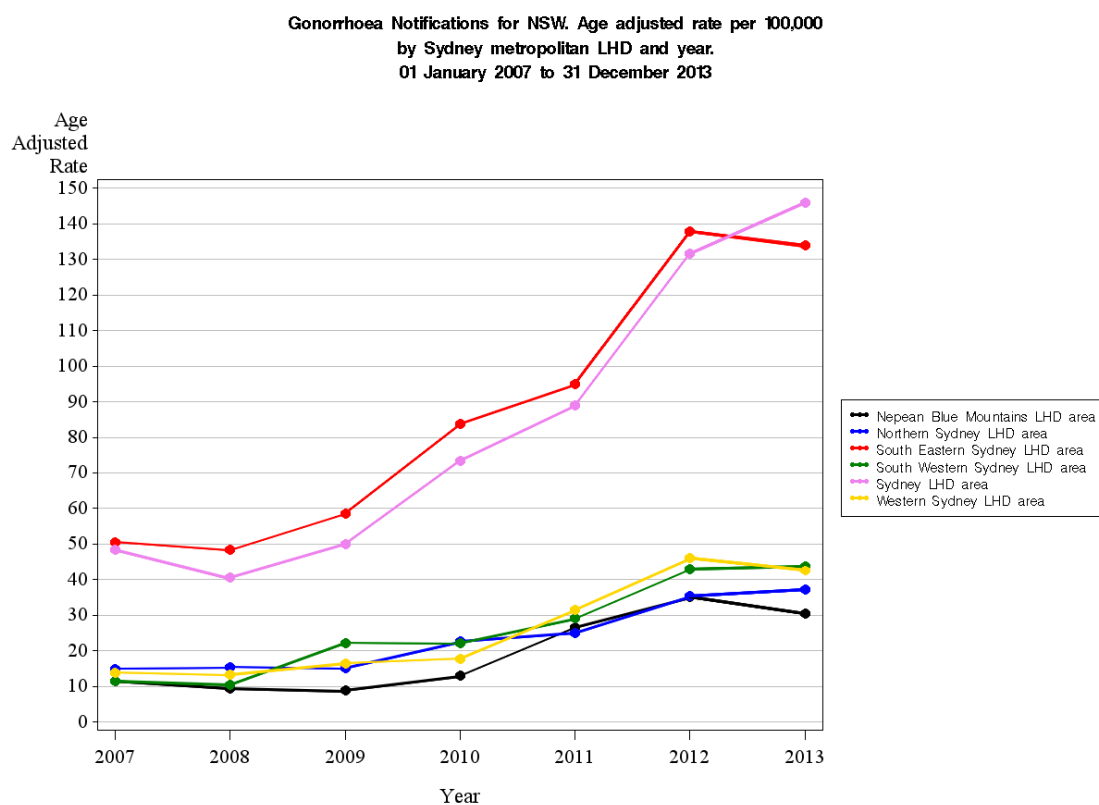


Source: NCIMS (SAPHaRI)

Table 3.5: Notified cases of gonorrhoea by non-metropolitan LHD and quarter

Year	Quarter	NSW not further specified									Western NSW
		Central Coast	Far West	Hunter New England	Illawarra Shoalhaven	Mid North Coast	Murrumbidgee	Northern NSW	Southern NSW		
2007	March	14	0	17	9	3	2	13	0	0	4
	June	3	0	7	6	1	3	12	0	1	1
	September	6	0	17	9	0	5	8	0	1	2
	December	6	0	43	8	2	4	9	1	2	8
2008	March	6	0	40	7	3	4	12	0	1	2
	June	8	1	25	10	5	2	9	0	1	3
	September	7	0	27	5	1	0	7	0	2	6
	December	5	2	19	11	6	6	4	0	1	2
2009	March	11	2	16	3	11	2	10	0	2	3
	June	7	4	19	5	6	11	9	0	1	6
	September	11	5	19	11	12	6	6	0	2	0
	December	8	3	25	13	6	6	4	0	2	3
2010	March	14	1	63	12	9	2	11	0	2	0
	June	13	3	45	11	13	6	14	5	0	4
	September	16	0	42	9	6	3	17	6	4	0
	December	11	0	36	10	3	4	8	11	2	1
2011	March	13	0	42	20	3	3	12	7	3	3
	June	10	1	47	11	8	6	11	4	5	13
	September	8	1	53	21	7	5	16	15	6	11
	December	16	1	70	22	5	9	21	3	7	12
2012	March	14	9	86	27	5	9	24	0	1	14
	June	11	10	68	31	9	13	14	2	5	11
	September	18	8	47	24	5	13	19	1	5	13
	December	19	6	59	19	4	4	17	1	9	9
2013	March	25	2	43	39	2	5	37	4	5	16
	June	34	0	52	37	5	8	22	1	6	11
	September	18	1	66	17	7	11	23	2	9	28
	December	18	3	49	14	9	10	21	2	4	13

Graph 3.6: Notified rates of gonorrhoea by metropolitan LHD and year



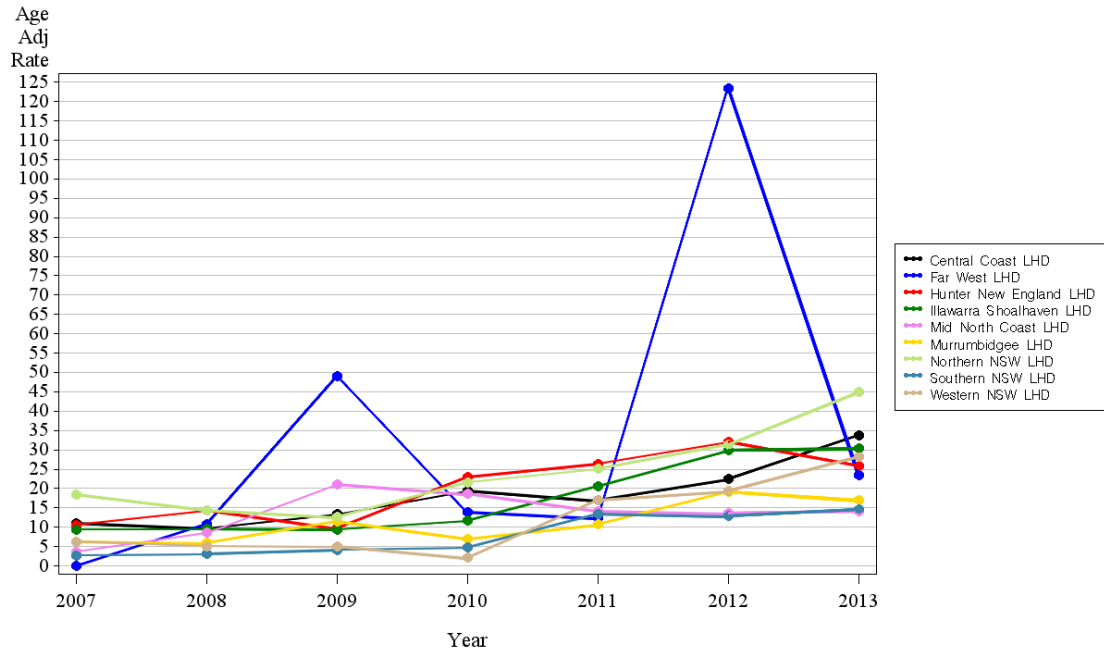
Source: NCIMS (SAPHaRI)

Table 3.6: Notified rates of gonorrhoea by metropolitan LHD and year

Year	Nepean Blue Mountains	Northern Sydney	South Eastern Sydney	South Western Sydney	Sydney	Western Sydney
2007	11	15	51	11	48	14
2008	9	15	48	10	41	13
2009	9	15	59	22	50	16
2010	13	23	84	22	73	18
2011	27	25	95	29	89	32
2012	35	35	138	43	132	46
2013	30	37	134	44	146	43

Graph 3.7: Notified rates of gonorrhoea by non-metropolitan LHD and year

Gonorrhoea Notifications for NSW. Age adjusted rate per 100,000
by non metropolitan LHD and year.
01 January 2007 to 31 December 2013



Source: NCIMS (SAPHaRI)

Table 3.7: Notified rates of gonorrhoea by non-metropolitan LHD and year

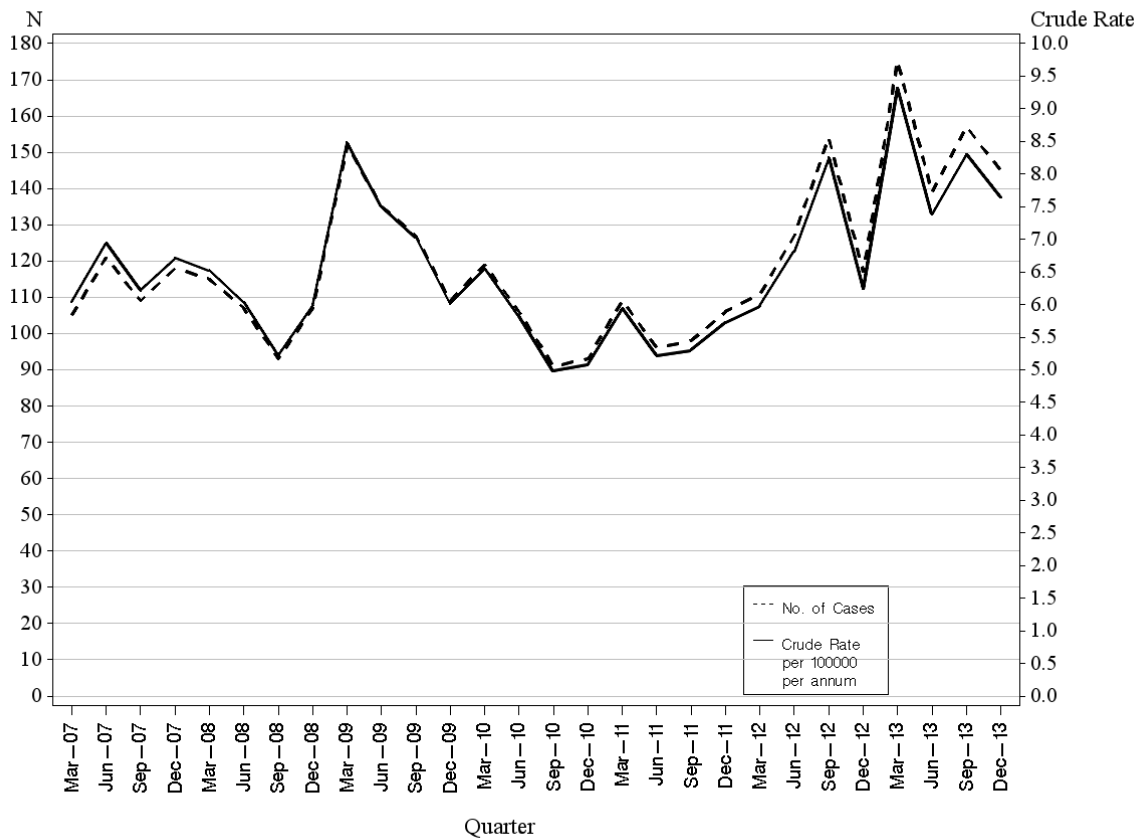
Year	Central Coast	Far West	Hunter New England	Illawarra Shoalhaven	Mid North Coast	Murrumbidgee	Northern NSW	Southern NSW	Western NSW
2007	11	0	11	9	4	6	18	3	6
2008	10	11	14	9	9	6	14	3	5
2009	13	49	10	9	21	11	13	4	5
2010	19	14	23	12	19	7	22	5	2
2011	17	12	26	21	14	11	25	13	17
2012	22	123	32	30	14	19	31	13	19
2013	34	23	26	30	14	17	45	15	28

4. Syphilis

Syphilis is recorded in NCIMS as 'syphilis – congenital', 'syphilis – infectious' or 'syphilis - greater than 2 years or unknown duration'. Only infectious syphilis is included in this report.

Graph 4.1: Notified cases and rates of infectious syphilis for NSW by quarter

Infectious Syphilis Notifications for NSW (excluding congenital infections), by quarter. N and Crude Rate per 100,000 per annum
01 January 2007 to 31 December 2013



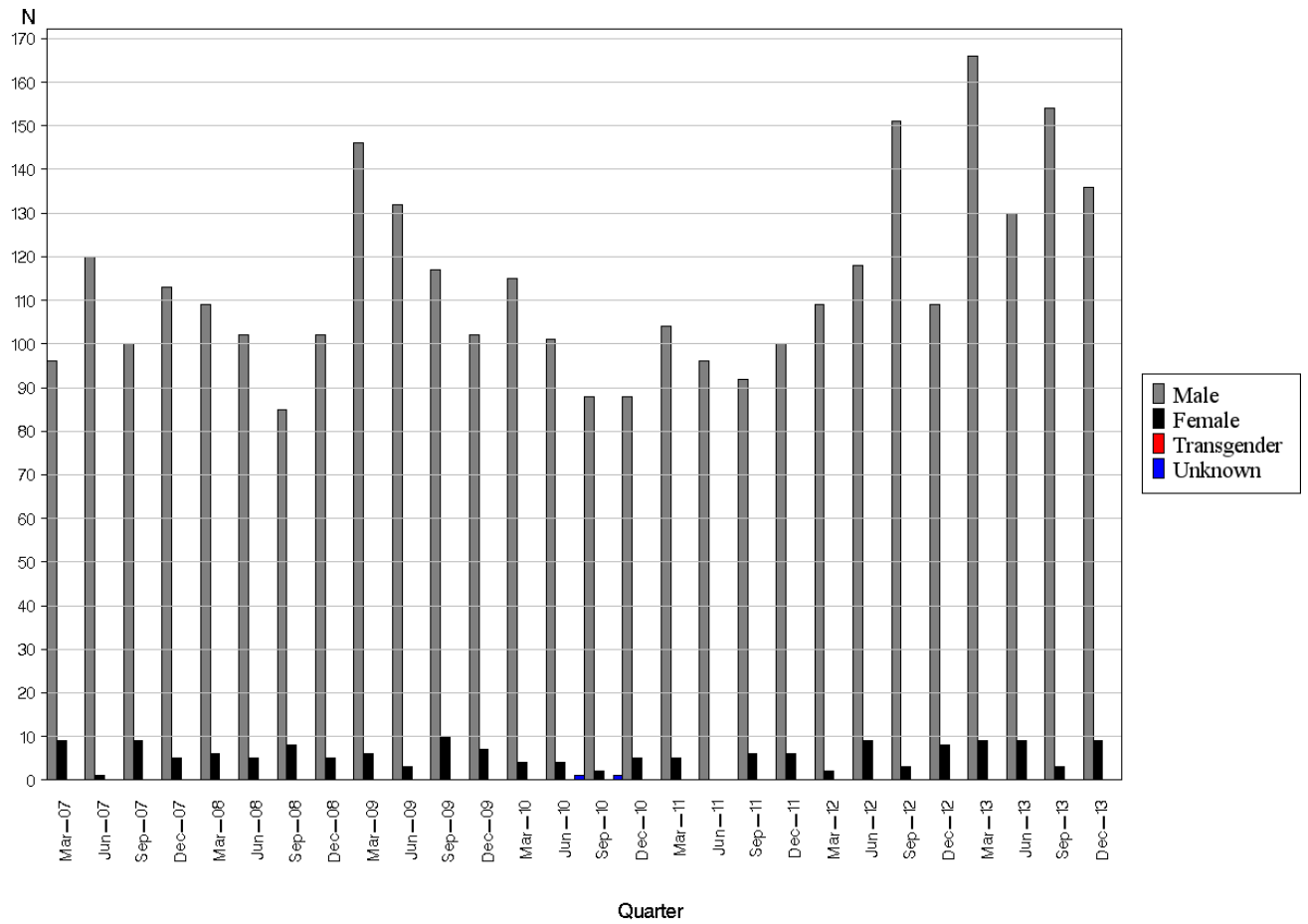
Source: NCIMS (SAPHaRI)

Table 4.1: Notified cases and rates of infectious syphilis for NSW by quarter

Year	Quarter	No. of notifications	Crude Rate per 100,000 per annum
2007	March	105	6
	June	121	7
	September	109	6
	December	118	7
2008	March	115	7
	June	107	6
	September	93	5
	December	107	6
2009	March	152	8
	June	135	8
	September	127	7
	December	109	6
2010	March	119	7
	June	106	6
	September	91	5
	December	93	5
2011	March	109	6
	June	96	5
	September	98	5
	December	106	6
2012	March	111	6
	June	127	7
	September	154	8
	December	117	6
2013	March	175	9
	June	139	7
	September	157	8
	December	145	8

Graph 4.2: Notified cases of infectious syphilis by sex and quarter

Infectious Syphilis Notifications for NSW (excluding congenital infections), by sex and quarter.
01 January 2007 to 31 December 2013

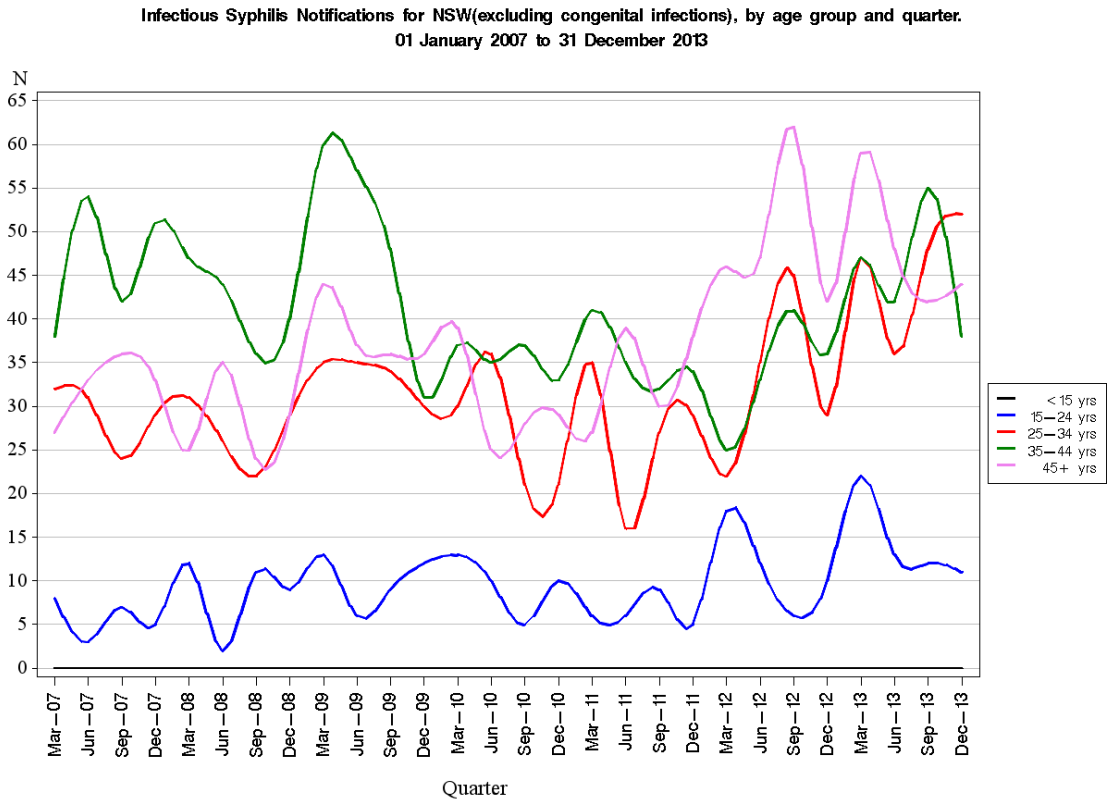


Source: NCIMS (SAPHaRI)

Table 4.2: Notified cases of infectious syphilis by sex and quarter

Year	Quarter	Female	Male	Transgender	Unknown
2007	March	9	96	0	0
	June	1	120	0	0
	September	9	100	0	0
	December	5	113	0	0
2008	March	6	109	0	0
	June	5	102	0	0
	September	8	85	0	0
	December	5	102	0	0
2009	March	6	146	0	0
	June	3	132	0	0
	September	10	117	0	0
	December	7	102	0	0
2010	March	4	115	0	0
	June	4	101	0	1
	September	2	88	0	1
	December	5	88	0	0
2011	March	5	104	0	0
	June	0	96	0	0
	September	6	92	0	0
	December	6	100	0	0
2012	March	2	109	0	0
	June	9	118	0	0
	September	3	151	0	0
	December	8	109	0	0
2013	March	9	166	0	0
	June	9	130	0	0
	September	3	154	0	0
	December	9	136	0	0

Graph 4.3: Notified cases of infectious syphilis by age group and quarter



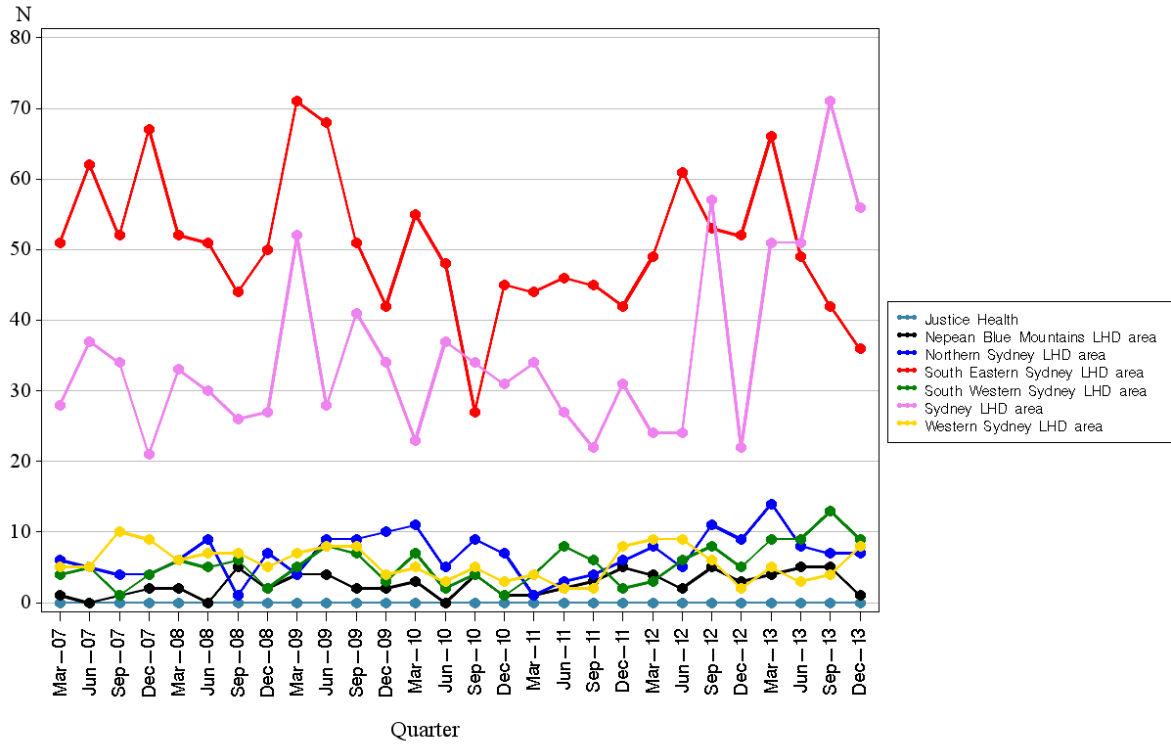
Source: NCIMS (SAPHaRI)

Table 4.3: Notified cases of infectious syphilis by age group and quarter

Year	Quarter	<15yrs	15-24yrs	25-34yrs	35-44yrs	45+yrs
2007	March	0	8	32	38	27
	June	0	3	31	54	33
	September	0	7	24	42	36
	December	0	5	29	51	33
2008	March	0	12	31	47	25
	June	0	2	26	44	35
	September	0	11	22	36	24
	December	0	9	29	40	29
2009	March	0	13	35	60	44
	June	0	6	35	57	37
	September	0	9	34	48	36
	December	0	12	30	31	36
2010	March	0	13	30	37	39
	June	0	10	36	35	25
	September	0	5	21	37	28
	December	0	10	21	33	29
2011	March	0	6	35	41	27
	June	0	6	16	35	39
	September	0	9	27	32	30
	December	0	5	29	34	38
2012	March	0	18	22	25	46
	June	0	12	35	33	47
	September	0	6	45	41	62
	December	0	10	29	36	42
2013	March	0	22	47	47	59
	June	0	13	36	42	48
	September	0	12	48	55	42
	December	0	11	52	38	44

Graph 4.4: Notified cases of infectious syphilis by metropolitan LHD and quarter

Infectious Syphilis Notifications for NSW (excluding congenital infections), by Sydney metropolitan LHD and quarter.
 01 January 2007 to 31 December 2013
 No adjustment made for incomplete quarter.



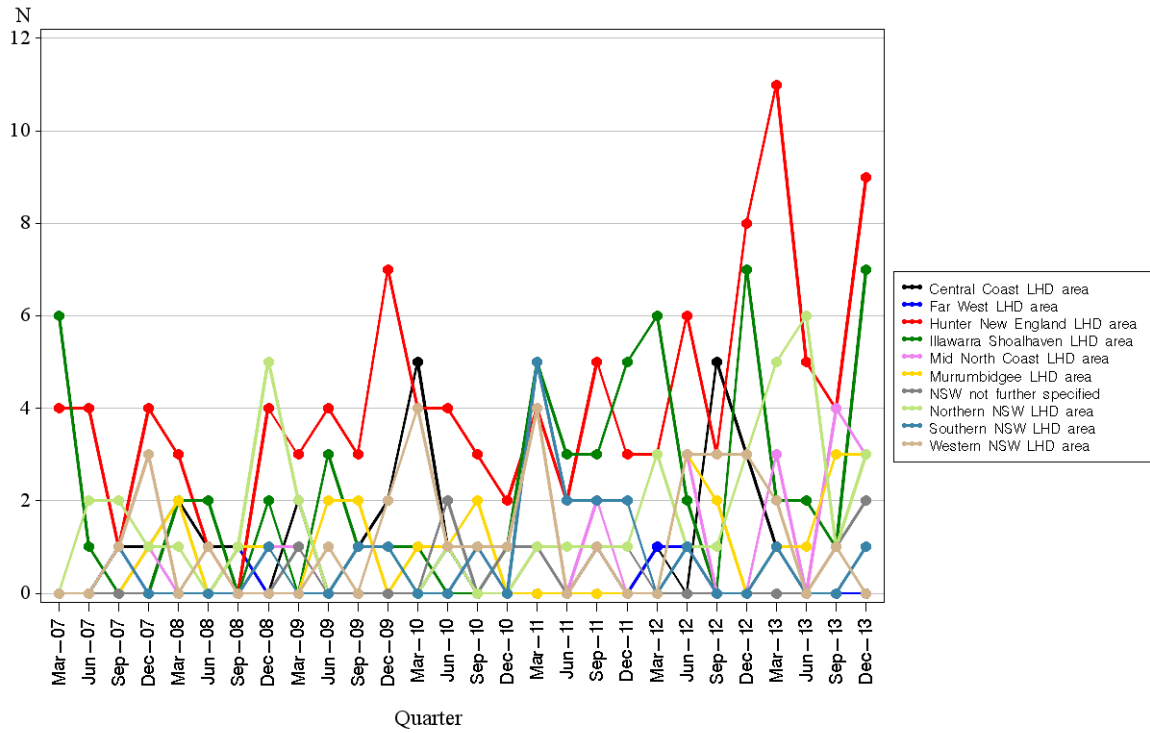
Source: NCIMS (SAPHaRI)

Table 4.4: Notified cases of infectious syphilis by metropolitan LHD and quarter

Year	Quarter	Nepean Blue Mountains	Northern Sydney	South Eastern Sydney	South Western Sydney	Sydney	Western Sydney
2007	March	1	6	51	4	28	5
	June	0	5	62	5	37	5
	September	1	4	52	1	34	10
	December	2	4	67	4	21	9
2008	March	2	6	52	6	33	6
	June	0	9	51	5	30	7
	September	5	1	44	6	26	7
	December	2	7	50	2	27	5
2009	March	4	4	71	5	52	7
	June	4	9	68	8	28	8
	September	2	9	51	7	41	8
	December	2	10	42	3	37	4
2010	March	3	11	55	7	23	5
	June	0	5	48	2	37	3
	September	4	9	27	4	34	5
	December	1	7	45	1	31	3
2011	March	1	1	44	4	34	4
	June	2	3	46	8	27	2
	September	3	4	45	6	22	2
	December	5	6	42	2	31	8
2012	March	4	8	49	3	24	9
	June	2	5	61	6	24	9
	September	5	11	53	8	57	6
	December	3	9	52	5	22	2
2013	March	4	14	66	9	51	5
	June	5	8	49	9	51	3
	September	5	7	42	13	71	4
	December	1	7	36	9	56	8

Graph 4.5: Notified cases of infectious syphilis by non-metropolitan LHD and quarter

Infectious Syphilis Notifications for NSW (excluding congenital infections), by non metropolitan LHD and quarter.
 01 January 2007 to 31 December 2013
 No adjustment made for incomplete quarter.

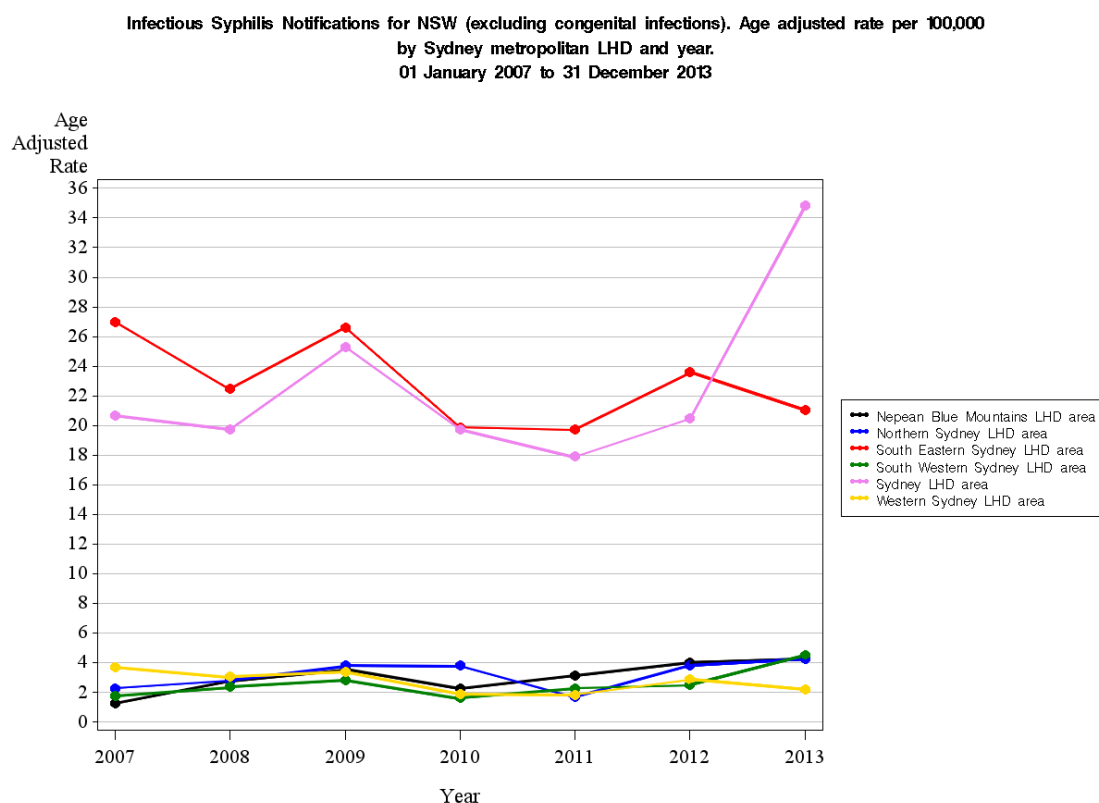


Source: NCIMS (SAPHaRI)

Table 4.5: Notified cases of infectious syphilis by non-metropolitan LHD and quarter

Year	Quarter	Central Coast	Far West	Hunter New England	Illawarra Shoalhaven	Mid North Coast	Murrumbidgee	Northern NSW	NSW not further specified	Southern NSW	Western NSW
2007	March	0	0	4	6	0	0	0	0	0	0
	June	0	0	4	1	0	0	2	0	0	0
	September	1	1	1	0	0	0	2	0	1	1
	December	1	0	4	0	1	1	1	0	0	3
2008	March	2	0	3	2	0	2	1	0	0	0
	June	1	0	1	2	0	0	0	0	0	1
	September	1	1	0	0	0	1	1	0	0	0
	December	0	0	4	2	1	1	5	0	1	0
2009	March	2	0	3	0	1	0	2	1	0	0
	June	0	0	4	3	0	2	0	0	0	1
	September	1	0	3	1	0	2	1	0	1	0
	December	2	0	7	1	0	0	1	0	1	2
2010	March	5	0	4	1	0	1	0	0	0	4
	June	1	1	4	0	0	1	1	2	0	1
	September	0	0	3	0	1	2	0	0	1	1
	December	0	0	2	1	0	0	0	1	0	1
2011	March	0	0	4	5	1	0	1	1	5	4
	June	0	0	2	3	0	0	1	0	2	0
	September	1	0	5	3	2	0	1	1	2	1
	December	0	0	3	5	0	0	1	1	2	0
2012	March	1	1	3	6	0	0	3	0	0	0
	June	0	1	6	2	3	3	1	0	1	3
	September	5	0	3	0	0	2	1	0	0	3
	December	3	0	8	7	0	0	3	0	0	3
2013	March	1	0	11	2	3	1	5	0	1	2
	June	0	0	5	2	0	1	6	0	0	0
	September	0	0	4	1	4	3	1	1	0	1
	December	0	0	9	7	3	3	3	2	1	0

Graph 4.6: Notified rates of infectious syphilis by metropolitan LHD and year



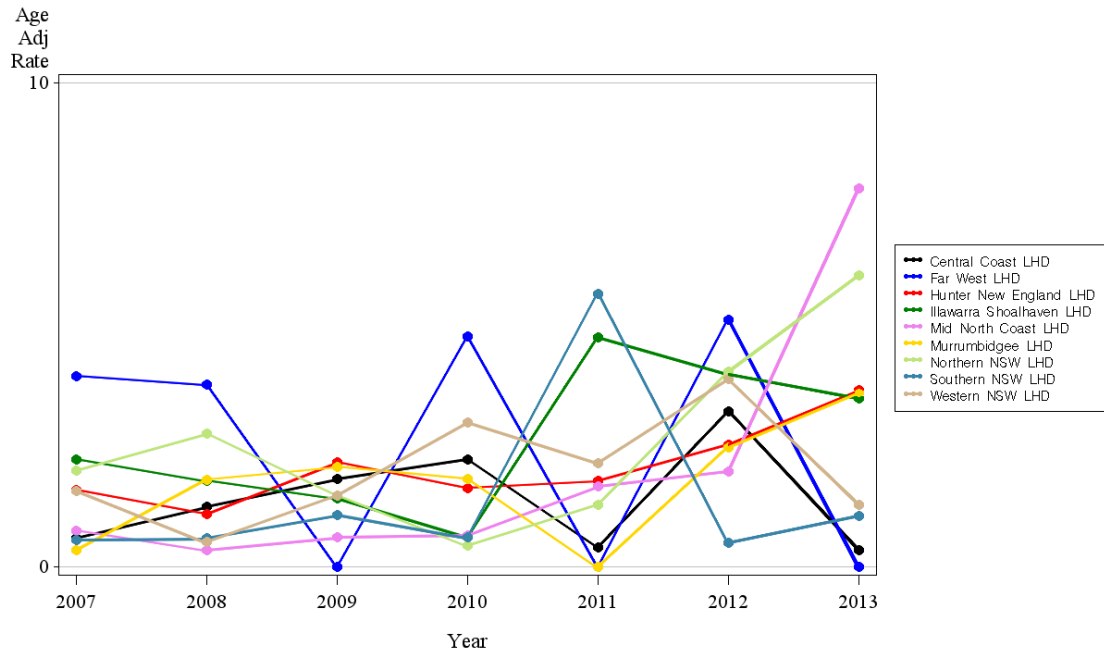
Source: NCIMS (SAPHaRI)

Table 4.6: Notified rates of infectious syphilis by metropolitan LHD and year

Year	Nepean Blue Mountains	Northern Sydney	South Eastern Sydney	South Western Sydney	Sydney	Western Sydney
2007	1.2	2.3	27.0	1.8	20.7	3.7
2008	2.8	2.8	22.5	2.4	19.8	3.0
2009	3.5	3.8	26.6	2.8	25.3	3.4
2010	2.2	3.8	19.9	1.6	19.7	1.9
2011	3.1	1.7	19.8	2.3	18.2	1.8
2012	4.0	3.8	23.6	2.5	20.5	2.9
2013	4.2	4.1	20.8	4.4	35.2	2.2

Graph 4.7: Notified rates of infectious syphilis by non-metropolitan LHD and year

Infectious Syphilis Notifications for NSW (excluding congenital infections). Age adjusted rate per 100,000 by non metropolitan LHD and year. 01 January 2007 to 31 December 2013



Source: NCIMS (SAPHaRI)

Table 4.7: Notified rates of infectious syphilis by non-metropolitan LHD and year

Year	Central Coast	Far West	Hunter New England	Illawarra Shoalhaven	Mid North Coast	Murrumbidgee	Northern NSW	Southern NSW	Western NSW
2007	1	4	2	2	1	0	2	1	2
2008	1	4	1	2	0	2	3	1	1
2009	2	0	2	1	1	2	1	1	1
2010	2	5	2	1	1	2	0	1	3
2011	0	0	2	5	2	0	1	6	2
2012	3	5	3	4	2	2	4	0	4
2013	0	0	4	3	8	4	6	1	1

5. Lymphogranuloma venereum (LGV)

All LGV notifications have been in men. 80% of cases were from Sydney and South East Sydney Local Health Districts.

Graph 5.1: Notified cases of LGV for NSW by quarter

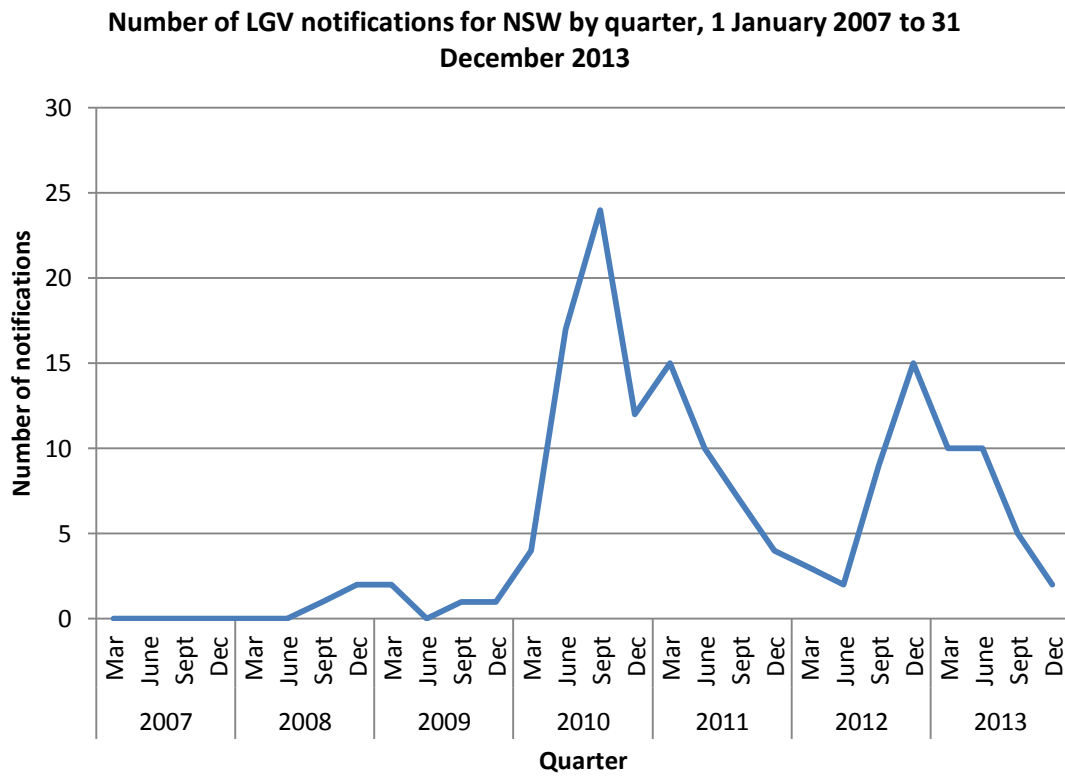


Table 5.1: Notified cases of LGV by age group and quarter.

Year	Quarter	<15yrs	15-24yrs	25-34yrs	35-44yrs	45+yrs
2007	March	0	0	0	0	0
	June	0	0	0	0	0
	September	0	0	0	0	0
	December	0	0	0	0	0
2008	March	0	0	0	0	0
	June	0	0	0	0	0
	September	0	0	0	1	0
	December	0	0	0	1	1
2009	March	0	0	1	1	0
	June	0	0	0	0	0
	September	0	0	0	0	1
	December	0	0	0	1	0
2010	March	0	0	0	1	3
	June	0	0	3	9	5
	September	0	0	6	8	10
	December	0	0	4	1	7
2011	March	0	0	2	3	10
	June	0	0	6	2	2
	September	0	0	0	2	5
	December	0	0	2	1	1
2012	March	0	0	1	1	1
	June	0	0	1	0	1
	September	0	1	4	3	1
	December	0	2	3	3	7
2013	March	0	1	4	4	1
	June	0	0	5	5	0
	September	0	0	3	2	0
	December	0	0	1	1	0