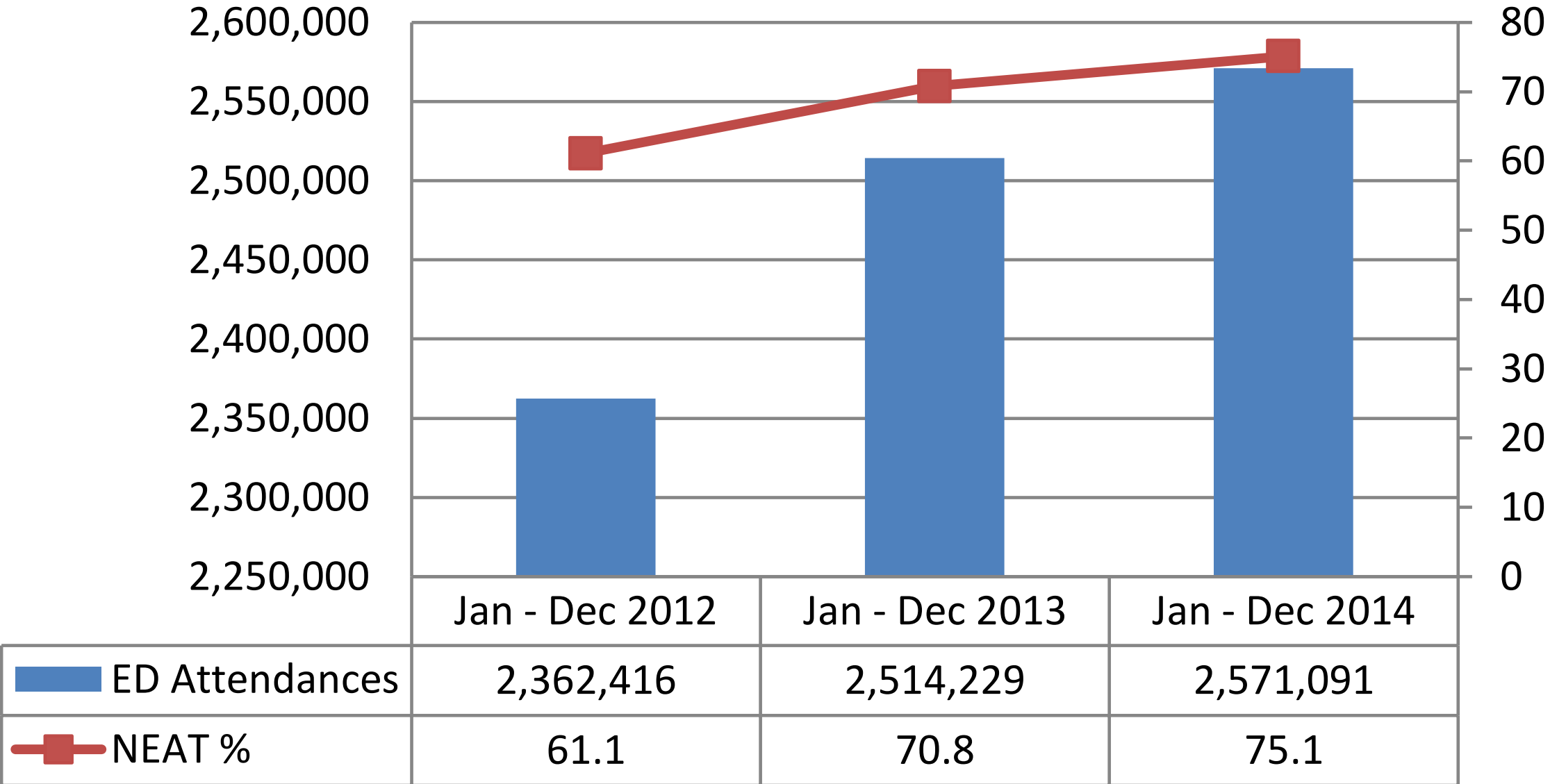


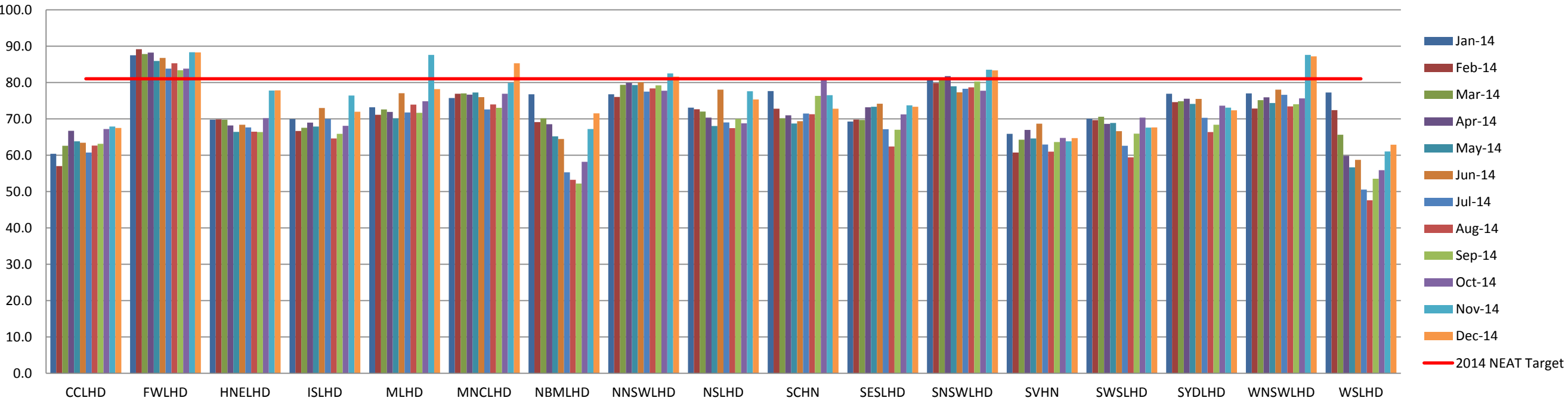
Whole of Health Update

Shireen Martin,
Manager WOHP
DO/GMs Meeting
20 February 2015

NSW NEAT with ED Attendances 2012 to 2014



NEAT monthly by district Jan - Dec 2014



Going Forward...

- NEAT - 'ED Treatment Performance (within 4 hours benchmark)'
- 81% till June 2015
- The Queensland Clinical Senate forum was held on 27&28 March 2014

WOHP strategies?

- Provision of support via Subject Matter Experts to assist with diagnostic studies, solution development and implementation of patient flow improvement strategies.
- Connecting the NSW sector via interagency partnerships to highlight initiatives and models of care aimed at enhancing patient flow and access to care.
- Establishing a Whole of Health website, bringing together available tools, resources and contacts in order to assist LHD staff in the improvement of patient flow.
- Sharing lessons learned, knowledge and experience across the system in order to develop local capability and ensure sustainability - state-wide Whole of Hospital Health Classes, Improving Access to Care teleconferences & WOHP Newsletter.
- Quarterly proposed Trajectories for each LHDs
- Part funding for designated WOHP Program Leads & Encouraging facilities to appoint local Clinical Champions in order to drive change
- Distribution of WOHP weekly snapshot (state-wide data dashboard) & this will include Mental Health data
- Medical engagement: As part of the WOHP, NSW has invested in the Medical Engagement Scale (MES) tool

2015 Whole of Health Focus areas..

- Improving Mental Health Access to Care
- NSW Ambulance Project – develop new KPI
- Intensive support for targeted facilities with high demand
- Continued development of the Patient Flow Portal and Electronic Patient Journey Boards
- Integrated Care Implementation
- Coaching Panel – communication and leadership
- Guardianship Project

Other focus areas which will have an impact on patient flow:

- New elective surgery targets
- Implementation process of theatre efficiency guidelines
- Outpatients project; developing a state-wide toolkit and framework for Specialist Outpatient Services
- Further education on use of the Patient Flow Portal
- Updated release and further rollout of Electronic Patient Journey Boards

QUESTIONS?

Should you have any questions later on please contact:

Shireen Martin

Manager WOHP

SMART@doh.health.nsw.gov.au

93919878