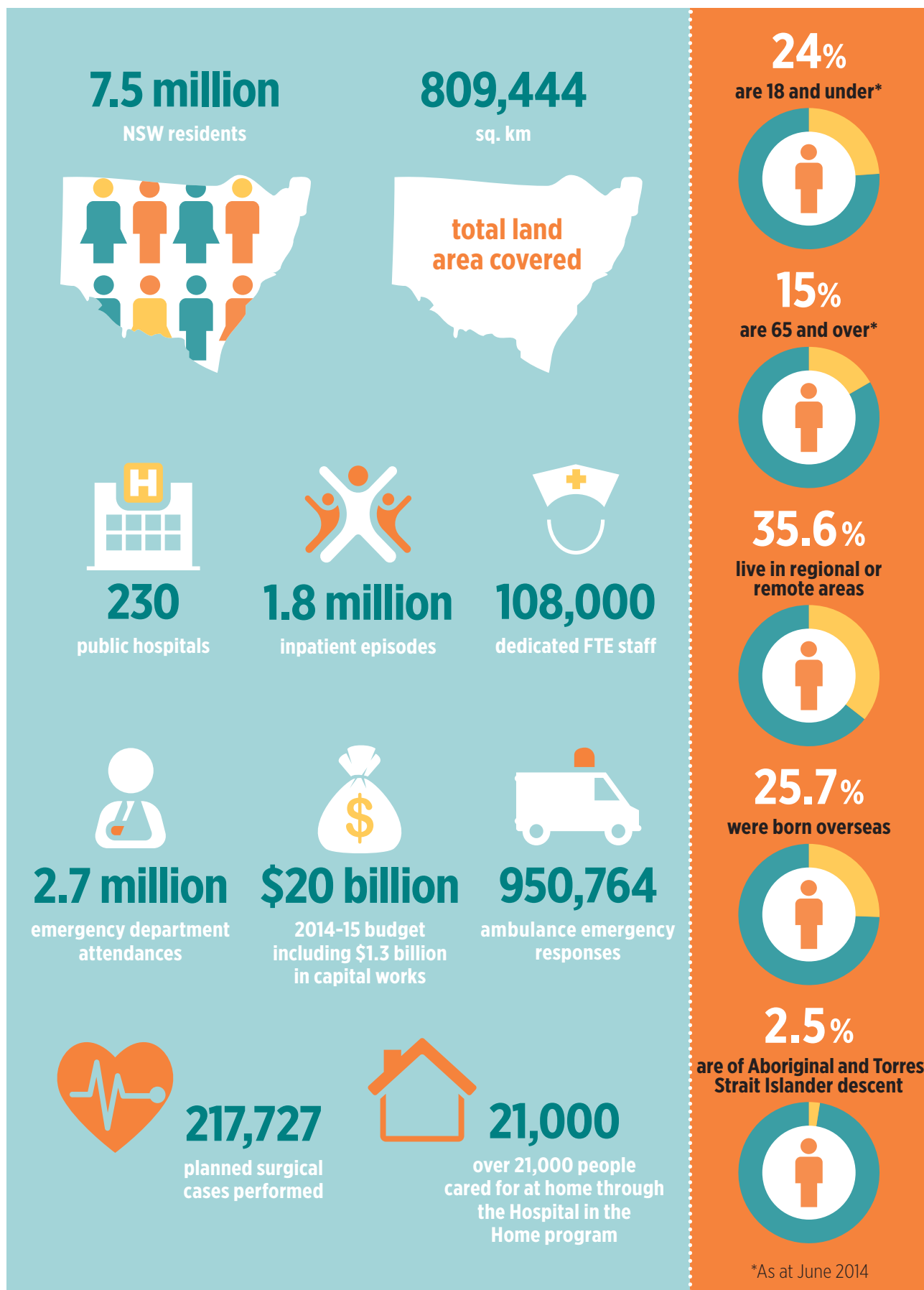


# About NSW Health

The NSW public health system is world class. It is the largest public health system in Australia.



## On a typical day in NSW



meals served to patients



clinicians use the electronic medical record



people spend the night in a public hospital



people are seen in emergency departments



people are admitted to a public hospital



NSW Ambulance responses



patients have their surgery (emergency or planned) performed in public hospitals



babies are born

## Approximately...

**61,860**

people are enrolled in the Integrated Care program to better manage their chronic disease

**3160**

people receive NSW Health dental services

**2030**

NSW primary schools participate in programs that promote healthy eating and active living

**1750**

children are immunised

**1360**

people visit the iCanQuit website

**60**

Hospital in the Home services are delivered to help people reduce their stay in hospital or avoid hospital admission

**59**

ComPacks are delivered to people who require immediate community services to safely return home from hospital

Source: NSW Health Health Information Exchange. \*As at July 2015, Monday to Friday.