

Psychiatry

The Workforce

A Psychiatrist is a qualified medical doctor who has obtained additional qualifications to become a specialist in the diagnosis, treatment and prevention of mental illness and emotional problems. The Royal Australasian and New Zealand College of Psychiatrists (RANZCP) is accredited by the Australian Medical Council (AMC) to deliver psychiatry training.

Workforce Characteristics in 2015

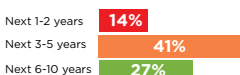


Supply and Distribution

Metropolitan Sydney

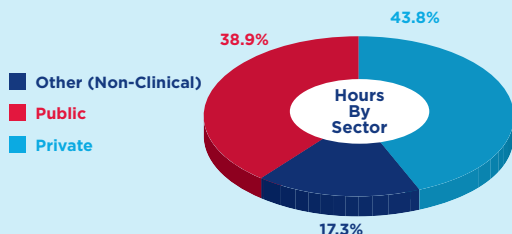
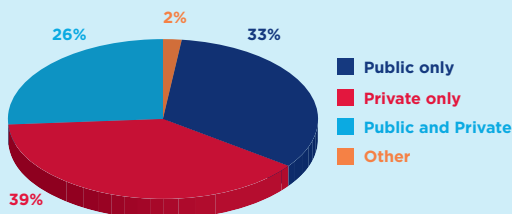


Retirement intentions (60+)

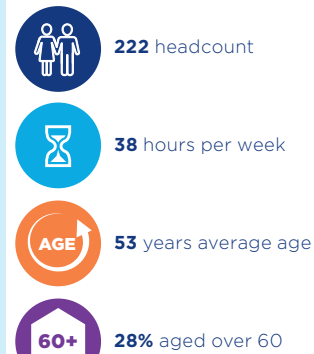


Total NSW

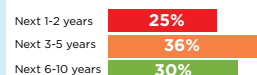
Workforce by Sector (percent)



Non-Metropolitan Sydney



Retirement intentions (60+)



* Data from records with less than 5 headcount is to be restricted due to privacy requirements

Trainees

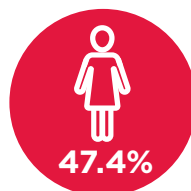


Advanced Trainees in NSW:

2015	2016	2017
150	231	171



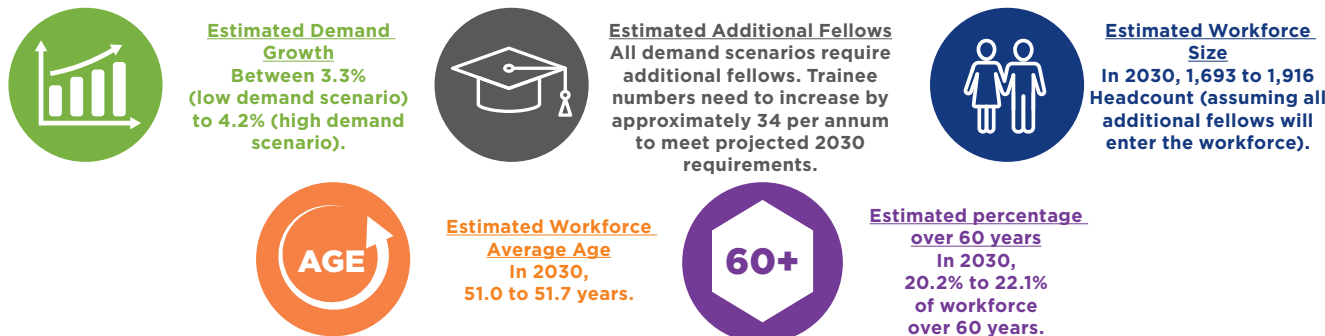
NSW Trainees as % of Australia 2017



Proportion female trainees in NSW 2017

The Future in NSW - Workforce Planning to 2030

Workforce projections are provided for a low and high demand scenario. Where requirements for both scenarios are met without the need for additional fellows, the projected “No Growth” scenario workforce data is provided.



Workforce Planning Priority and Assessment Framework



Rating Key: Minimal Factor < Minor Factor < Moderate Factor < Major Factor

Workforce Modelling Considerations

- Workforce modelling is based on current models of care. Any change in the models may impact on requirements.
- Any changes to current training programs will affect the workforce modelling outcome.
- Workforce modelling is based on current workforce hours profile by age co-hours. Any changes to hours worked by future clinicians will affect the model.
- There is an accepted error rate of plus or minus two per cent within workforce modelling
- The model does not address any mal-distribution either by location (rural or regional) or sector (public or private)