



# Certificate of Accreditation

## Sewage Management Facility

### Sewage Ejection Pump Station

*This Certificate of Accreditation is issued by the Secretary of the NSW Ministry of Health pursuant to Clause 41(1) of the Local Government (General) Regulation 2005.*

**System:** *Flygt Simtank 900 Litre SEPS*

**Manufacturer:** *Xylem Water Solutions Australia Ltd*

**Of:** *2/2 Capicure Drive, Eastern Creek, NSW, 2766*

*The Flygt Simtank SEPS as described in the attached Schedule has been accredited as a sewage management facility for use in single domestic premises in NSW. The pump well is manufactured to the Australian / New Zealand Standard AS/NZS 1546.1:2008 On-site domestic wastewater treatment units - septic tanks.*

*Director, Environmental Health  
for Secretary (delegation PH335)*

**Issued:** *23 October 2019*

**Certificate No:** *SEPS013*

**Expires:** *31 December 2024*

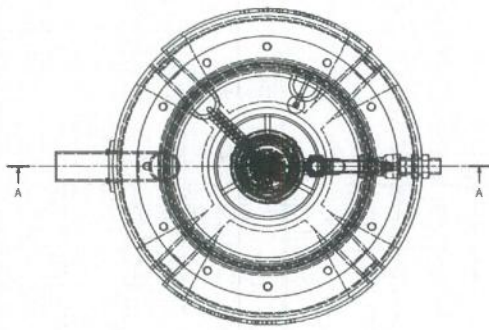


## Accreditation Schedule

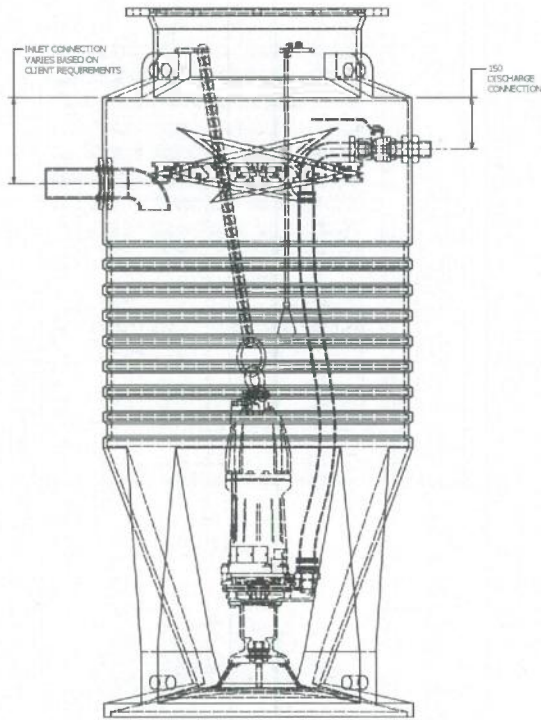
*The Certificate of Accreditation applies to the Flygt Simtank 900 Litre sewage ejection pump stations in accordance with the attached plans.*

The Flygt Simtank 900 Litre sewage ejection pump stations consist of:

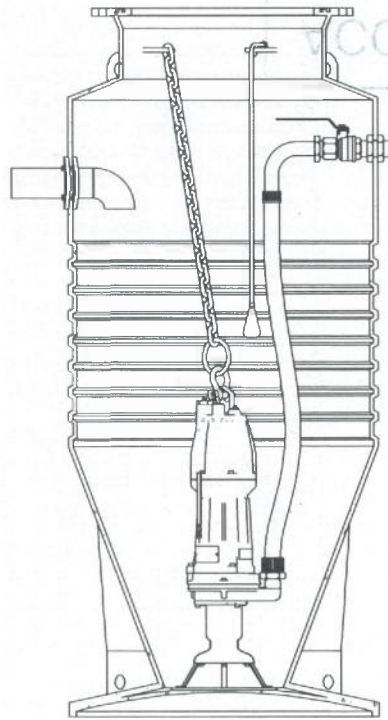
- A vertical axis type cylindrical rotational molded polyethylene pump well and lid, manufactured by GRAF PLASTICS AUSTRALIA PTY LTD at site address 23 SUCCESS WAY, HENDERSON WA 6166, with a capacity of 900 litres;
- A Flygt MF3068 PC grinder pump (or equivalent), fitted with a Flygt level transducer and high level float or a combination thereof;
- A flexible 32mm diameter discharge hose fitted to an isolation valve/anti syphon valve on the outlet of the grinder pump. The discharge hose is connected to a 40mm diameter pressure main to the sewer;
- An audible and visible alarm system



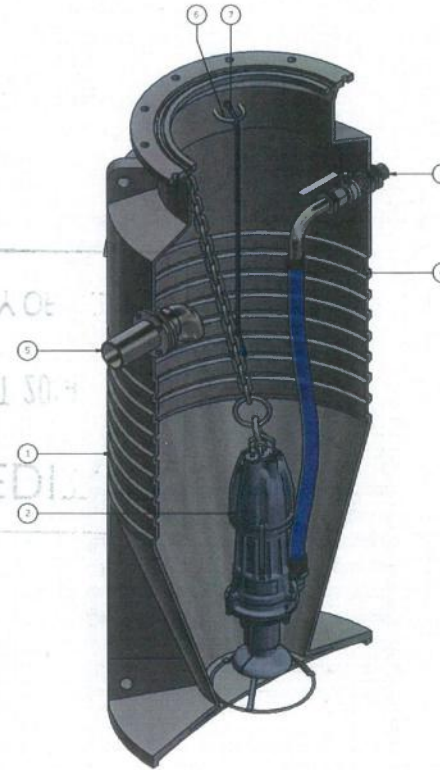
PLAN VIEW  
SCALE (DN5)



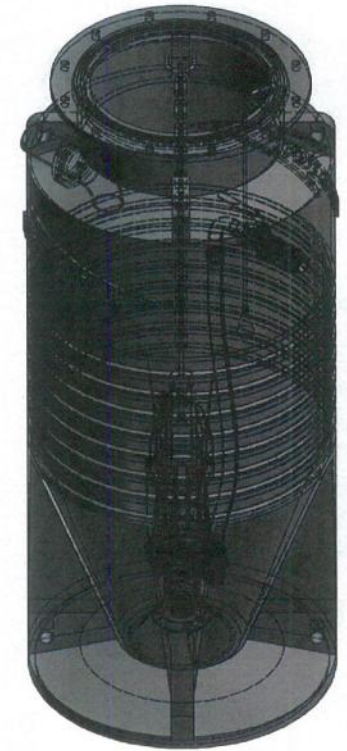
FRONT ELEVATION  
SCALE (DN5)



SECTION A-A  
SCALE (DN5)



ISOMETRIC VIEW 2  
SCALE (DN5)



ISOMETRIC VIEW 1  
SCALE (DN5)

NSW MINISTRY OF

23 OCT 2019

ACCREDITED

ACCREDITED  
23 OCT 2019  
NSW MINISTRY OF HEALTH

ITEM	PART No.	DESCRIPTION	MATERIAL	QTY
0	13-PLN	LIFTING CHAIN	316SS	1
1	13-PLN	FLYGT BEMD FLOKT SWITCH W/ CABLE	316SS	1
2	13-PLN	CHAIN HOOK	316SS	2
3	13-PLN	INLET PIPE W/ FLANGE MOUNT	316SS	1
4	13-PLN	HOSE	POLYETHYLENE	1
5	13-PLN	DISCHARGE HOSE FIT OFF KIT W/ VALVE & THD CONNECTIOS	316SS	1
6	13-PLN	FLYGT SUBMERCIBLE PUMP	316SS	1
7	13-PLN	SIMPLET TANK P/NDE	LCPE	1

REV	DATE	DESCRIPTION	BY	CHK	APP
1	15/08/2019	GENERAL DETAIL - FOR INFORMATION ONLY			

**COPYRIGHT**  
THIS DRAWING AND DESIGN IS SUPPLIED BY XYLEM IS COVERED BY COPYRIGHT AND IS NOT TO BE REPRODUCED OR IN ANY MANNER COPIED TO ANY THIRD PARTY WITHOUT THE WRITTEN CONSENT OF XYLEM

**CONFIDENTIAL INFORMATION**  
THIS DRAWING AND DESIGN IS SUPPLIED AS CONFIDENTIAL INFORMATION AS SPECIFIED IN THE CONTRACT OR AS CONFIDENTIAL INFORMATION AS REQUIRED BY APPLICABLE TERMS AND CONDITIONS OF COMPONENT SUPPLIERS.

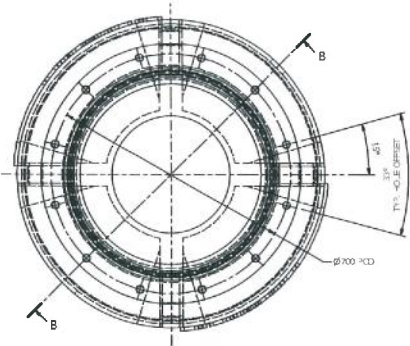
**xylem**  
Let's Solve Water

XYLEM WATER SOLUTIONS  
UNIT 2, 2 CAPRICORN DRIVE  
SUNSHY, 2796  
NSW 4815, AUSTRALIA  
PH: +61 2 9852 6482  
F: +61 2 9852 6483

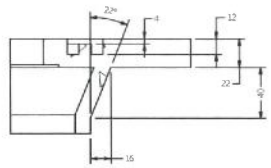
ALSO RELEASED THROUGH: CHINA, INDIA, KANGAROO ISLAND, MALAYSIA, NEW ZEALAND, SINGAPORE, SOUTH AFRICA, THAILAND, TAIWAN & AUSTRIA

DESIGNED BY: [Signature]  
DRAWN BY: [Signature]  
CHECKED BY: [Signature]  
APPROVED BY: [Signature]

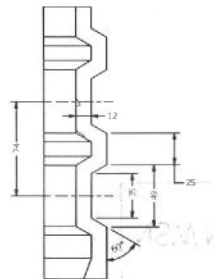
CLIENT: XYLEM	PROJECT: TBA	CONTRACT / REFERENCE No: TBA
DATE: 15.8.2019	DRAWN BY: B. COLEMAN	CHECKED BY: J. PRICE
SHEET: 1 of 2	SCALE: DWS	APPROVED BY: J. PRICE
DWG No: TBA	REV: A	REV: A



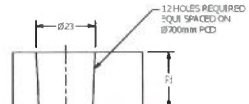
PLAN VIEW  
SCALE (ANS)



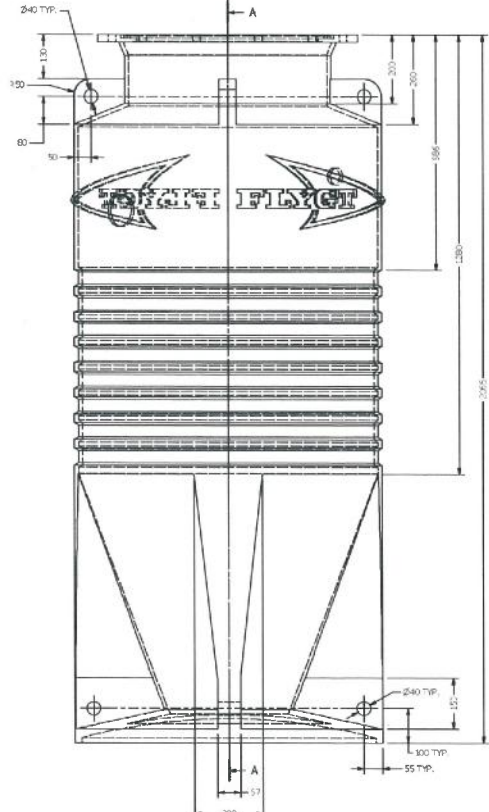
DETAIL D  
FLANGE SEAL DETAIL  
SCALE (DNS)



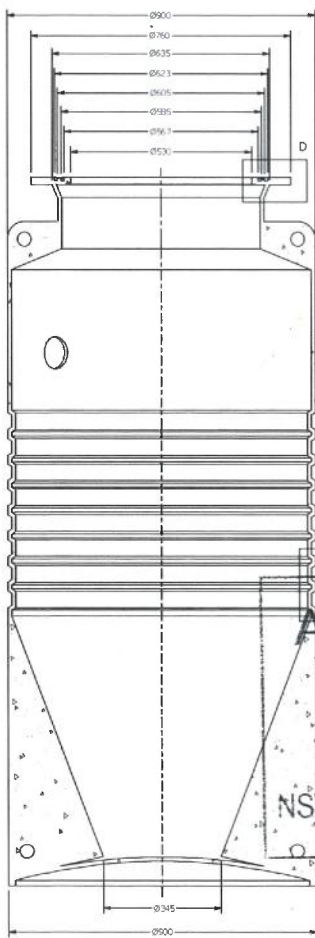
DETAIL C  
STIFFENER RIDGE DETAIL  
SCALE (DNS)



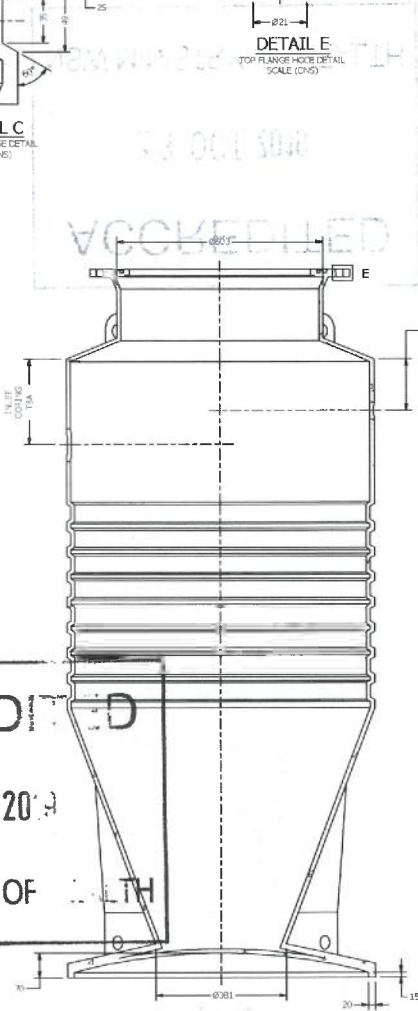
DETAIL E  
TOP FLANGE HOLE DETAIL  
SCALE (DNS)



FRONT ELEVATION  
SCALE (ANS)



SECTION A-A  
SCALE (1:7.5)



SECTION B-B  
SCALE (1:7.5)



ISOMETRIC VIEW  
SCALE (DNS)

ACCREDITED  
23 OCT 2019  
NSW MINISTRY OF HEALTH

REV	DATE	DESCRIPTION	BY	CHK	APP
A	25/08/2019	GENERAL DETAIL - FOR INFORMATION ONLY	SC	JP	JP

**REVISION HISTORY**

**Copyright**  
THIS DRAWING AND STYLE SUPPLIED BY XYLEM IS CONFIDENTIAL AND IS NOT TO BE USED OR IN ANY WAY COPIED TO ANY THIRD PARTY WITHOUT THE WRITTEN CONSENT OF XYLEM.

**CONFIDENTIAL INFORMATION**  
THIS DRAWING AND DESIGN IS SUPPLIED AS CONFIDENTIAL INFORMATION AS SPECIFIED IN THE CONTRACT OR AS CONFIDENTIAL INFORMATION AS DEFINED BY XYLEM TERMS AND CONDITIONS OF COMPONENT SALES.

**xylem**  
Let's Solve Water  
PULVER WATER SOLUTIONS  
UNIT 2, CONCRETE DRIVE  
SANDEN CREEK  
SYDNEY, NSW  
PH: 481 2 9832 8200  
T: 6 29832 6483

ALSO SEE: AEC, BRISBANE, DUNEDIN, FALGOUT, ST. PETERSBURG, MELBOURNE, MARIKAL, MONTREAL, NEWCASTLE, OSAGE, SYDNEY, TORONTO, VICTORIA & AGENTS

UNLESS OTHERWISE SPECIFIED, DIMENSIONS ARE IN MILLIMETERS.  
DIMENSIONS IN PARENTHESES ARE IN INCHES.  
DIMENSIONS IN SQUARE BRACKETS ARE IN FEET AND INCHES.  
DIMENSIONS IN BRACKETS ARE IN FEET AND INCHES.  
DIMENSIONS IN BRACKETS ARE IN FEET AND INCHES.

CLIENT: XYLEM  
PROJECT: TBA  
TITLE: TANK GENERAL DETAIL  
PACKAGE PLANT STATION: SMPLE-TAN

CONTRACT / REFERENCE NO:	TBA
DESIGNER:	B. COLEMAN
CHECKED:	J. PRICE
DATE:	15.9.2019
APPROVED:	J. PRICE
SHEET:	2 of 2
SCALE:	DNS
DWG NO:	TBA
SHEET SIZE:	A1
REV:	A