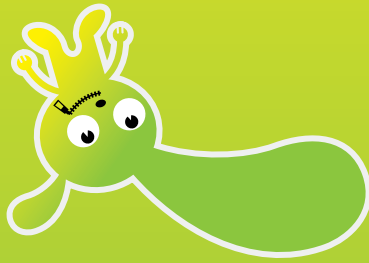


- \* To help investigate a serious crime or provide evidence in court
- \* To conduct approved research projects that will benefit the public
- \* To help other health services to prevent a serious threat to someone's life, health or welfare.
- \* When State and Commonwealth government agencies require information for statutory reporting purposes, for example to report notifiable diseases such as cancer and infectious diseases, to report births and deaths, and to provide Medicare details
- \* To help investigate a serious crime or provide evidence in court
- \* To conduct approved research projects that will benefit the public
- \* To help other health services to prevent a serious threat to someone's life, health or welfare.

## What does the law say about other confidentiality exceptions?



There are a few situations where we might need to talk to other people. For example:

- \* If we are concerned that you might harm yourself or someone else;
- \* If we feel that you are being harmed or at risk of being harmed by someone else, or if we have any concerns about your safety, welfare or wellbeing

If any of these situations arise we would have to make sure that you are safe.

## Our duty of care to you

Confidentiality is the protection of personal information. It means that the information shared between you and your health worker is kept safe, and is only used to provide you with a health service. Health workers are careful to manage your health information so that your privacy is protected. Sometimes we need to share information outside the health service.

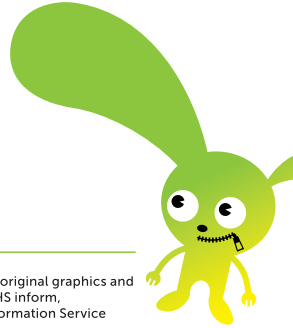
## What is confidentiality?

This information card is for young people aged 12-24 to explain that anyone who looks after your health has to keep information about you private. The card tells you only about how things work in the health service, not other organisations such as your school or social services.

**for young people**  
**providing a confidential service**  
 We keep it zipped –

## For more information about confidentiality and your health rights and responsibilities, you may:

- \* Speak to a health worker
- \* Visit [www.kidsfamilies.health.nsw.gov.au](http://www.kidsfamilies.health.nsw.gov.au)
- \* Refer to the 'NSW Health Privacy Leaflet for Patients' [www.health.nsw.gov.au](http://www.health.nsw.gov.au)



Acknowledgements: original graphics and text adapted from NHS inform, Scotland's Health Information Service



**NSW KIDS + FAMILIES**



Produced by NSW Kids and Families in partnership with the South Eastern Sydney Local Health District and Sydney Local Health District and St George Youth Services (READY Project) 2014. For more copies of this pocket-sized card, phone Better Health Centre (02) 9887 5450 or email: [nsld-bhcc@health.nsw.gov.au](mailto:nsld-bhcc@health.nsw.gov.au) Or visit [www.kidsfamilies.health.nsw.gov.au](http://www.kidsfamilies.health.nsw.gov.au)

**WE KEEP IT ZIPPED**  
 We provide a confidential service for young people

