

The Lumos program links de-identified patient records from general practices with NSW Health records, to map patient journeys across the NSW health system. Lumos generates new insights to improve health services and patient outcomes across the state. **Benefits to participating GPs include:**

Empowered

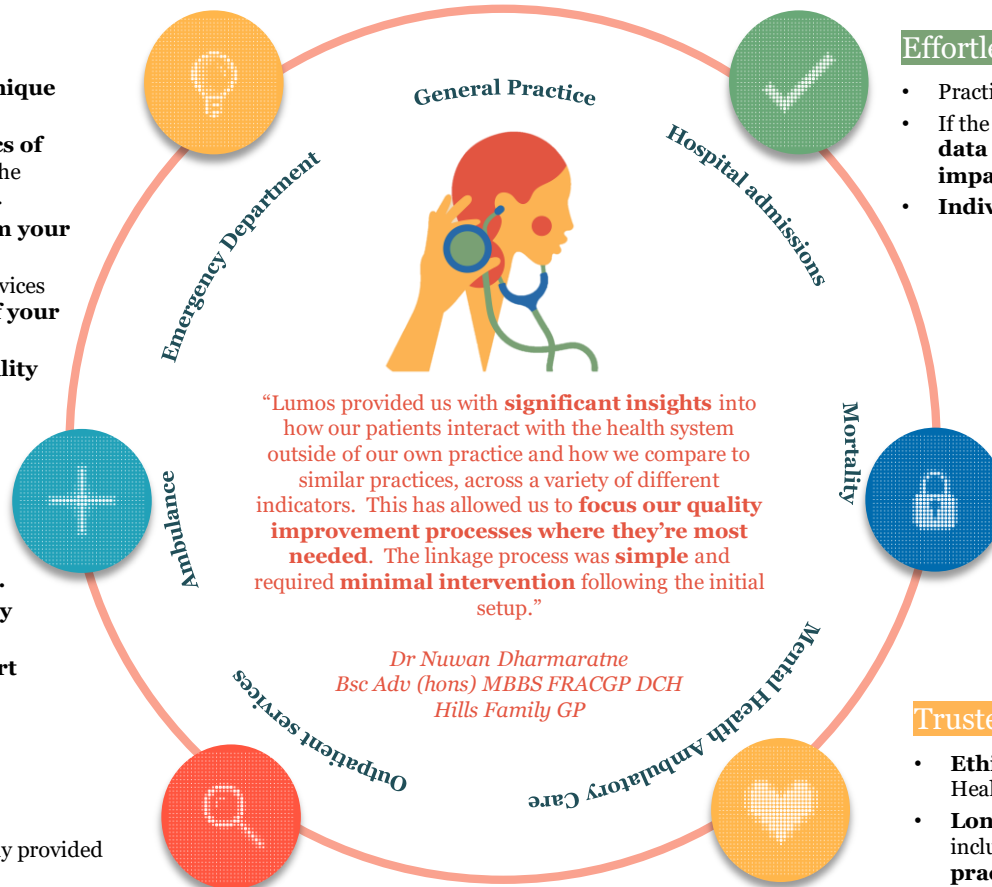
- Receive a custom report with **unique insights** about your patients.
- Understand the **characteristics of your patient population** in the context of your region and state.
- Identify opportunities to **inform your practice operations**.
- Understand the NSW health services your patients access **outside of your practice**.
- Support your **data driven quality improvement activities**.

Included

- **Contribute** to a data asset to inform **health system improvement and planning**.
- Highlight the **value of primary care**.
- Receive **ongoing PHN support**

Current

- **Updated reports** are currently provided every **6 months**.
- **Reports are continually improved** based on **GP feedback**.



Effortless

- Practices can participate at **no cost**.
- If the minimum technical requirements are met, **data extraction is automated** and **does not impact the operation of your practice**.
- **Individual patient consent not required**.

Secure

- **Secure** systems and processes, that have undergone an **independent privacy impact assessment**, in line with best practice.
- **Patient data is de-identified** before it leaves the practice, minimising privacy risks.

Trusted

- **Ethically approved** by the NSW Population and Health Services Research Ethics Committee.
- **Long-standing** program, **grown since 2016** to include **over 330 participating general practices across NSW**.
- **Strong data and program governance** and stakeholder representation, including GPs and representative bodies, health consumers, NSW Health and PHNs.

