

# State-wide referral criteria for NSW public outpatient services

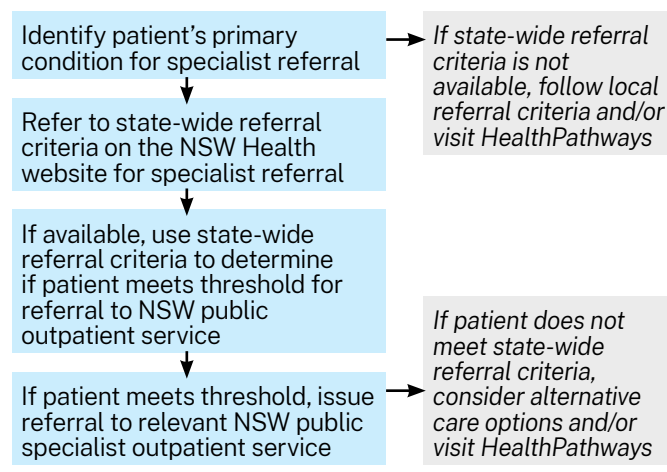
State-wide referral criteria is a clinical decision-support tool that communicates the minimum clinical criteria required to access NSW public specialist outpatient services as well as the minimum referral information required to enable safe, timely and effective triage.

There is currently new state-wide referral criteria available for selected conditions within the specialties of gastroenterology and ophthalmology. Additional state-wide referral criteria will be progressively developed and made available.

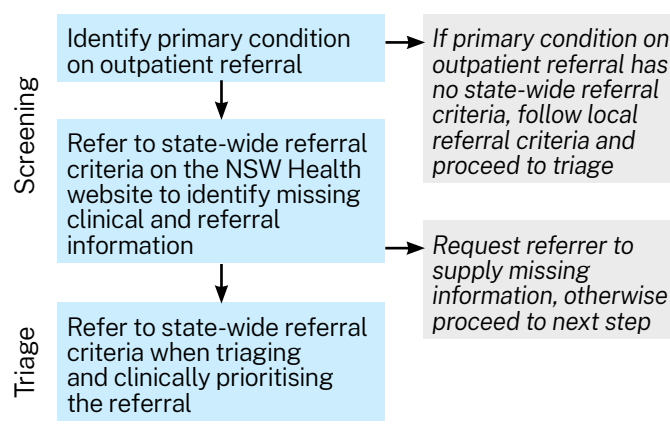
## Benefits of state-wide referral criteria

- Clearer expectations of **clinical and referral requirements**
- Improve **quality and appropriateness** of referrals
- Minimise **clinical variation** with referral acceptance and triage practices
- Reduce the number of **patients waiting unnecessarily** on outpatient waitlists

## How to apply state-wide referral criteria when deciding to refer to NSW public outpatient services



## How to apply state-wide referral criteria when screening and triaging referrals in NSW public outpatient services



To view the state-wide referral criteria or to learn more about what these changes mean for you, visit the NSW Health website.



[health.nsw.gov.au/referrals](https://health.nsw.gov.au/referrals)

## More information

Contact [MOH-Outpatients@health.nsw.gov.au](mailto:MOH-Outpatients@health.nsw.gov.au)