

Demand and Capacity Planning

Richard Yarlett

Senior Systems Support Specialist | **Patient Flow**

System Performance Support Branch | **NSW Ministry of Health** | eHealth

Tel 02 9424 5924 | Mob 0409 672 036

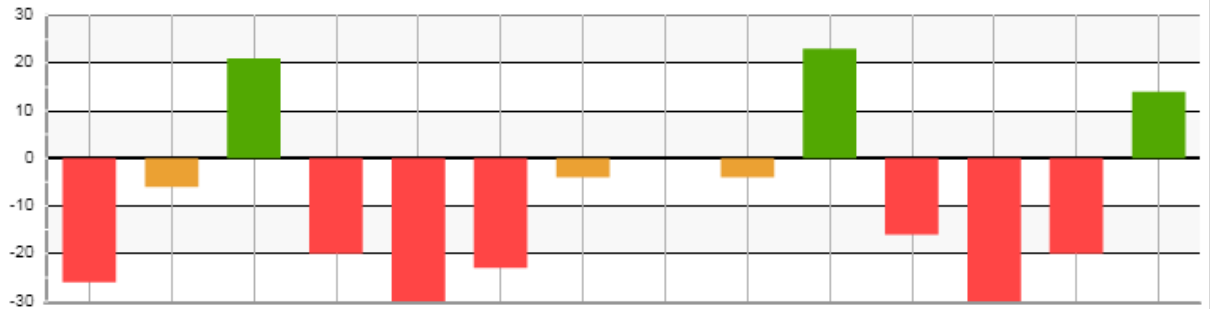
richard.yarlett@moh.health.nsw.gov.au



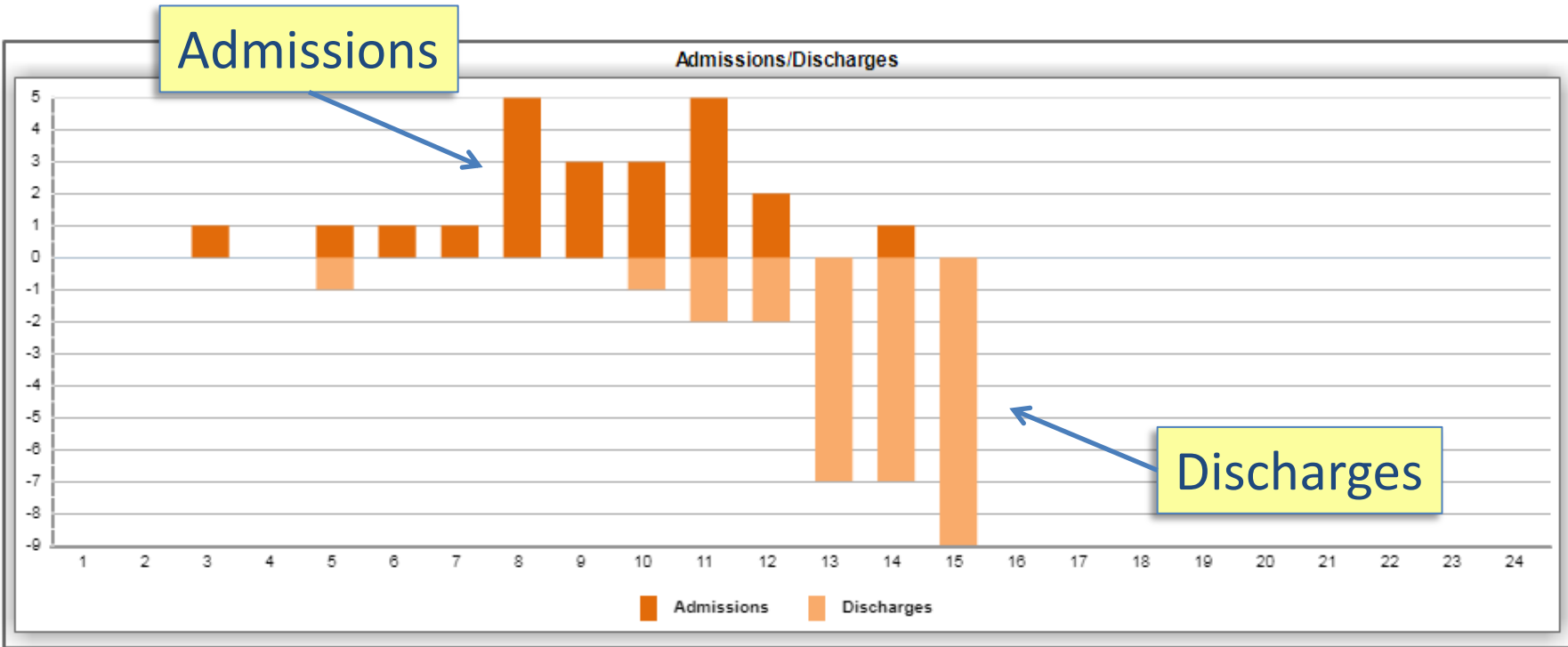
The Predictive Tool



	Wed	Thu	Fri	Sat	Sun	Mon	Tue	Wed	Thu	Fri	Sat	Sun	Mon	Tue
	22/11/17	23/11/17	24/11/17	25/11/17	26/11/17	27/11/17	28/11/17	29/11/17	30/11/17	01/12/17	02/12/17	03/12/17	04/12/17	05/12/17
Prediction data only applies to ED accessible wards														
Predicted total beds AVAILABLE	119	107	114	57	44	100	103	107	107	114	57	44	100	103
Predicted total beds REQUIRED	145	113	93	77	74	123	107	107	111	91	73	74	120	89
BED DEMAND STATUS	-26	-6	21	-20	-30	-23	-4	0	-4	23	-16	-30	-20	14
Total ED accessible beds	528	528	527	520	514	523	528	528	528	527	520	514	523	528
	Notes	Notes	Notes	Notes	Notes	Notes	Notes	Notes	Notes	Notes	Notes	Notes	Notes	Notes



The Admission & Discharge Curve



Understand your ED in-flow



- Number of presentations and peak times
- Number of Ambulances
- Admissions by Specialty

Specialty Reports

LOS by Specialty and AMO

Predicted Adm via ED by Spec...

Specialty Activity

Specialty Activity Snapshot

Predicted Admissions via ED by Specialty	21 Day Indicator	Indicator	Wed	Thu	Fri	Sat	Sun	Mon	Tue	Wed	Thu	Fri	Sat	Sun	Mon	Tue
			22/11/2017	23/11/2017	24/11/2017	25/11/2017	26/11/2017	27/11/2017	28/11/2017	29/11/2017	30/11/2017	01/12/2017	02/12/2017	03/12/2017	04/12/2017	05/12/2017
Aged and Extended Care	7	5 Year	7	6	6	7	5	8	7	10	6	6	6	7	7	7
		3 Month	7	8	7	6	6	7	7	7	8	7	6	6	7	7
Cardiology	6	5 Year	5	4	5	3	5	7	7	7	7	3	5	5	8	6
		3 Month	6	6	7	5	5	7	7	6	6	7	5	5	7	7
Ear Nose & Throat Surgery	1	5 Year				1		1								
		3 Month	1	1			1		1	1	1			1		1
Endocrinology	0	5 Year								1						
		3 Month													1	
Gastroenterology	2	5 Year	2	2	3	3	2	4	2	3	3	2	2	2	3	3
		3 Month	3	3	3	3	2	2	3	3	3	3	3	2	2	3
General Surgery	4	5 Year	5	5	3	3	4	3	4	4	3	3	4	3	4	4
		3 Month	4	3	4	3	3	4	4	4	3	4	3	3	4	4
Gynaecology	0	5 Year			1			1							1	
		3 Month	1	1					1	1	1					1
Mental Health	2	5 Year	2	1	1	1	1	1	1	1	1	2	1	1	1	1
		3 Month	1	1	1	1	1	1	2	1	1	1	1	1	1	2
Nephrology	1	5 Year	1	1	1	1	1	1		1		1		1		
		3 Month		1	1	1	1	1			1	1	1	1	1	
Neurology	3	5 Year	2	2	1	1	2	2	2	2	2	2	2	3	1	1
		3 Month	2	2	3	2	1	3	3	2	2	3	2	1	3	3
Obstetrics	0	5 Year							1							
		3 Month														
Oncology	1	5 Year	2	2	2	1		1	1	1	3		2	1	2	1
		3 Month	1	1	1	1	1	1	2	1	1	1	1	1	1	2
Orthopaedics	2	5 Year	2	2	2	3	2	2	1	2	1	2	3	4	1	2
		3 Month	2	2	2	3	2	2	2	2	2	2	3	2	2	2
Paediatrics	2	5 Year	2	2	2	3	3	2	2	3	3	2	2	3	2	3
		3 Month	3	3	3	1	3	3	3	3	3	3	1	3	3	3
Rehabilitation	0	5 Year		1	1		1		1	1	1					
		3 Month		1		1	1		1	1	1		1	1		1
Renal Medicine	0	5 Year														
		3 Month														
Respiratory	3	5 Year	2	3	1	1	2	3	2	3	3	3	2	1	2	2
		3 Month	4	2	4	2	3	3	3	4	2	4	2	3	3	3
Urology	1	5 Year	1	1	1	1		2	1	1	1	1	2	2	1	1
		3 Month	1	1	1	1	1	1	1	1	1	1	1	1	1	1
Vascular	0	5 Year			1				1							
		3 Month														
Total for 3 Month*			36	36	37	30	31	35	40	36	36	37	30	31	35	40



Understand Your Discharges



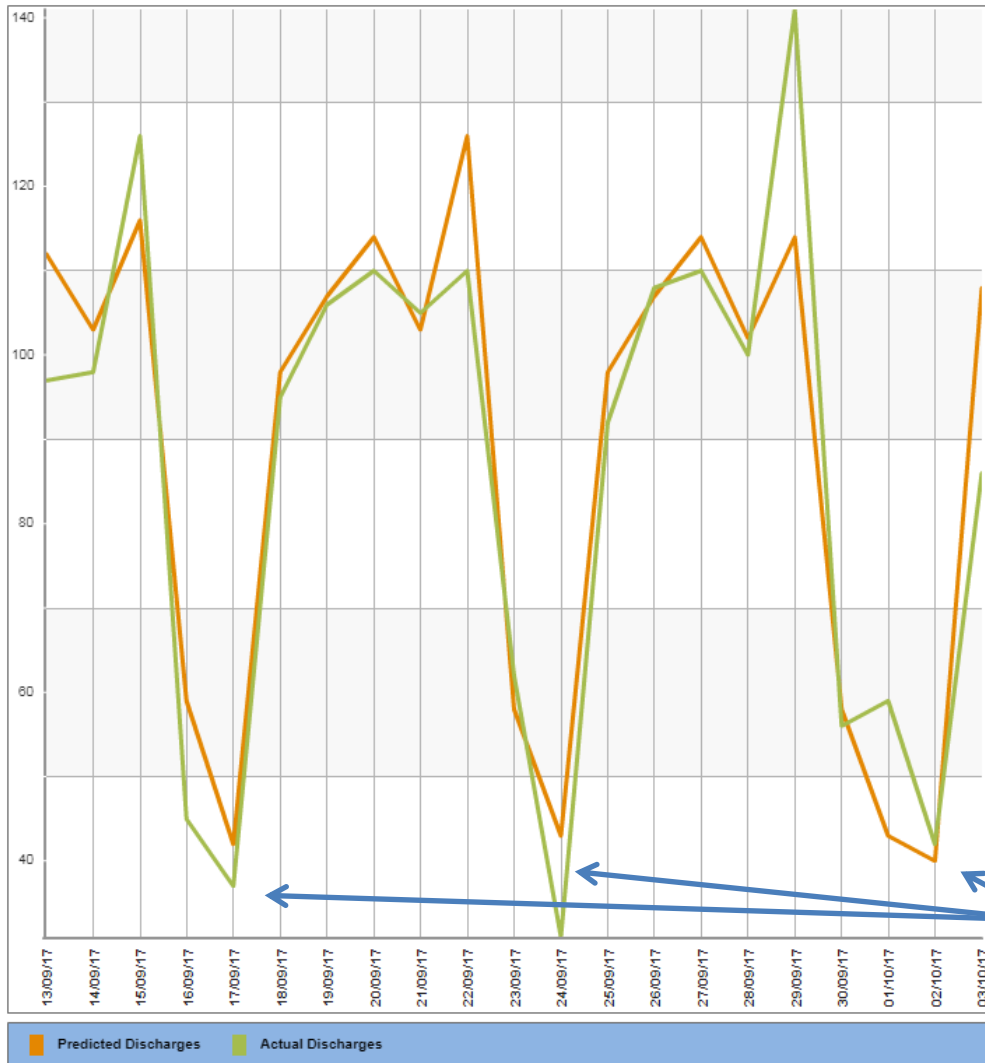
Select data to display (max.4):

Actual fields:

- Ideal Buffer Beds
- Actual Admissions via ED
- *Actual Booked Admissions
- Actual Discharges
- Unstaffed beds in use
- Surge beds occupied
- Empty Available ED accessible beds at 7am
- *Actual Beds Required

Predicted fields:

- Bed Demand Status
- Predicted Beds Required
- Predicted Discharges
- Predicted Beds Available



Understand your in-flows

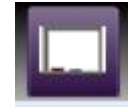


- Manage planned admissions along with anticipated capacity

BED DEMAND STATUS		-22	-2	9	-13	-26	-12	-16	-15	-13	5	-16	-25
		Wed	Thu	Fri	Sat	Sun	Mon	Tue	Wed	Thu	Fri	Sat	Sun
		22/11/17	23/11/17	24/11/17	25/11/17	26/11/17	27/11/17	28/11/17	29/11/17	30/11/17	01/12/17	02/12/17	03/12/17
Unplanned Admissions	Yesterday's Admissions still in ED	14											
	Predicted Unplanned Admissions	50	42	46	42	43	50	52	49	47	46	42	43
	Predicted Direct Admissions	13	12	11	5	5	12	14	14	12	13	5	3
	Predicted Unplanned Admissions	77	54	57	47	48	62	66	63	59	59	47	46
Planned Admissions	Booked Surgical Overnight	12	11	9	1	0	11	9	12	12	9	0	0
	Booked Medical Overnight	1	1	0	0	0	1	1	1	1	0	0	0
	Predicted Planned Admissions	13	12	9	1	0	12	10	13	13	9	0	0
Beds in Use	Surge beds occupied	7											
	Unstaffed beds in use												
	EDO/23hr requiring an inpatient bed												
	Predicted Beds Required	7	0	0	0	0	0	0	0	0	0	0	0
Predicted total beds REQUIRED		97	66	66	48	48	74	76	76	72	68	47	46
Discharges	Predicted Discharges	68	64	75	35	22	62	60	61	59	73	31	21
Beds	Empty Available beds at 7am	7											
Predicted total beds AVAILABLE		75	64	75	35	22	62	60	61	59	73	31	21
EDD		28	48	53	6	1	30	13	2	9			
		Notes	Notes	Notes	Notes	Notes	Notes	Notes	Notes	Notes	Notes	Notes	Notes



Manage your inpatients



- Care Co-ordination: Realistic EDDs based on plan of care

Occupancy: 100%				Clinician EDD: 100%		# Expired EDD: 2		BHT IN: 0		IWT IN: 0		Outliers IN: 0		Waiting in ED				Discharge Target: 9		In Charge: Duncan		Last Refreshed: 16:11	
Inpatients: 12				DWA's: 0		# With W4W: 2		BHT OUT: 2		IWT OUT: 0		Outliers OUT: 9		Total									
														0-4hrs				5-24hrs		>24hrs		Count	
														0				5		1		8	
Be	Diet	SW	OT	Phys	SP	DT	Referrals	Non Clinical Notes				Nurse	IWT	IHT	PTS	G2G							
01A (AGE)	FULL		(A)	(P)		(R)	N/D/C					winfield joan											
02A (AGE)	FRL200, FULL	(P)	(P)	(R)	(F)	(R)	N-STROKE N/D/C					Nyssa											
03A (AGE)	FULL, SEAFR	(C)	(P)	(P)	(C)	(R)	N/D/C N-RESP					winfield joan				Yes							
04A (AGE)	FULL	(P)	(R)	(R)	(F)	(R)	N/D/C					Archee Lisa				Yes							
05A (AGE)																							
06A (AGE)																							
07A (AGE)																							
08A (AGE)																							
08B (AGEM)	▲▲ 2238	RESTRICTED	89 yrs	Kinchington, M	Aged and Extended Care	Team B	18-07-1																
09A (AGEM)	Y ▲▲ 69155	RESTRICTED	73 yrs	Houghton, B	Medical Oncology	Team A	09-07-1																
09B (AGEM)	▲▲ 18728	RESTRICTED	78 yrs	Chung, S	Respiratory	Team A	20-07-1																
010A (AGEM)	Y ▲ 116045	RESTRICTED	93 yrs	Senanayake, T	Aged and Extended Care	Team B	07-07-1																
10B (AGEM)	▲ 20030	RESTRICTED	85 yrs	Senanayake, T	Aged and Extended Care	Team B	21-07-1																
(AGEM)	Open																						



Manage Your LOS



Bed Board Transfers Bed Management

Patient Mode **Bed Mode** Last refreshed: 22-11-2017 09:53

Patient Profile - Liverpool Hospital

LOS: [Dropdown] AMO Filter: [Dropdown] Ward Filter: [Dropdown]

Filters used: ED accessible
 Hide wards with no patients
 Clear 0-4 days 5-

Doctor: [List of names]

Speciality:
 Aged And Extended Care
 Anaesthetic
 Breast/endo Surgery
 Cardiothoracic Surgery
 Colorectal Surgery
 Dental
 Dermatology

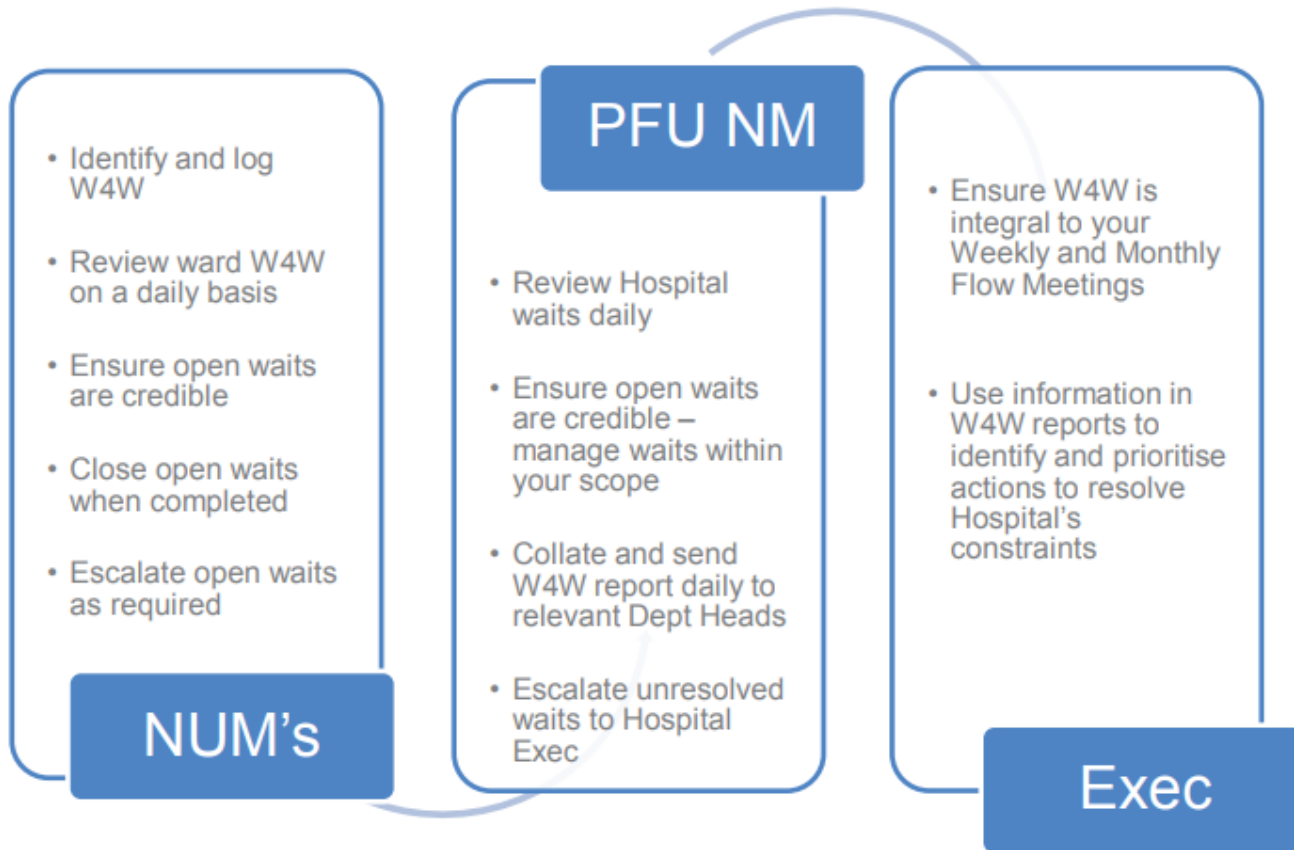
Exclude ED Non Admitted

Filter Data Clear Filters Close

Specialty	Admission Reason	HLO	EDD	EDD #	W4W	G2G					
	Overseas Patient doing Angiogram	68	17-09-17	-66							
	Cardiac arrest	43	24-11-17	2	Diagnostics/Treatment: Other Out of Hospital Referral/ACAT Assessment						
	Dizziness	43	06-12-17	14	Diagnostics/Treatment: Operating Theatre						
	Respiratory - shortness of breath	26	22-11-17	0	Diagnostics/Treatment: Coronary Angiography/ Intervention/PPM						
	Pain, chest	15	25-11-17	3							
	STEMI	15	24-11-17	2							
	Syncope/faint	13	22-11-17	0							
	cor angio	12	30-11-17	8							
CB3E Cardiology	020	1354085	16 yrs	M	Cardiology	Seizure	9	17-11-17	-5		
CB2I	058	1387112	76 yrs	M	Cardiology	Transfer from Bowral- HeartAttack	9	16-11-17	-6		
CB3E Cardiology	027	109602	82 yrs	M	Cardiology	Falls	9	21-11-17	-1		
CB3C CCU	007	1387129	65 yrs	M	Cardiology	Cor Angio	9	21-11-17	-1		
CB3C CCU	017	864128	74 yrs	M	Cardiology	Respiratory - shortness of breath	8	23-11-17	1		
CB3E Cardiology	029	1122411	73 yrs	F	Cardiology	Pain, chest	7	21-11-17	-1		



Manage Your Delays



The Weekly Flow Meeting

- GM/DO/DCS/DON
- Capacity Predictions
- Extended LOS (Over 9 days?)
- W4W delays
- Waitlist
- Isolation issues



Manage Your Outliers



PatientFlowPortal (Test) V6.2.0.19254 53037108

Bed Board: [Dropdown] Hospital: [Dropdown] Select Hospital [PAS] [eMR] [PTS] For any application issues contact the Statewide Service Desk on 1300 286 533. For any transport booking queries contact PTS on 1300 233 500. Facility STEP: 0 ED STEP: 0

Bed Board Transfers Bed Management

Patient Profile - [Dropdown] Last refreshed: 22-11-2017 09:47

Outliers [Dropdown] AMO Filter [Dropdown] Ward Filter [Dropdown]

Filters used:
 Hide wards with no patients Display ward description
 Outlier Non outlier (system update) Non outlier (user update) Patient Name: [Text] Patient ID: [Text]

Ward	Outlier Count	Non-outlier Count
1C	0	0
2B	0	0
2C	0	0
3D	0	0
CCU	0	0
CD 1333349	0	0
Child	0	0
Day Surger	0	0
ED	0	0
EMU	0	0
Home	0	0
ICU	0	0
Maternity	0	0
Mental Hea	0	0
PMB AGEM	0	0
PMB CARD	0	0
PMB ED Out	0	0
PMB MAU	0	0
PMB Ren SW	0	0
Renal Dial	0	0
Special Ca	0	0

Filtered Profile:
ED accessible bed occupancy: N/A
Occupancy: N/A
Number of patients: 18
Bed days to date: 68
Average LOS: 3.78
Clinician defined EDD: 0.0%

Hospital Profile:
ED accessible bed occupancy: 89.1%
Occupancy: 82.6%
Number of patients: 194
Bed days to date: 1406
Average LOS: 8.68
Clinician defined EDD: 21.9%



Understand Your Triggers



Emergency Treatment Performance	81
ED accessible bed occupancy %	85
Patients over 9 days	25
Patients with ACCR waiting placement	4
Patients waiting ACCR review	2
Patients accepted for rehab waiting a Bed	1
Patients waiting rehab consult	2
Patients with MRO	0
Inpatients waiting surgery/procedure	1
Patients requiring cardiac monitoring	0
Patients ready for transfer to another Facility	2
Patients awaiting transfer into Facility	2
Patients with Waiting For What Reasons	15



Targeted Escalation



Facility STEP: **2** ED STEP: **2**

Today's Prediction			
Prediction		Beds	
Patients IN		Patients OUT	
Unplanned admissions	45	Discharges	44
Planned admissions	6	Empty beds	
Beds in use	17		
Total	68	44	-24

Requiring Action Now				
Waiting (in ED) for Bed	3-4hrs	>4hrs	>24hrs	Count
Total		6		7
Cardiology		4		4
Respiratory		2		3

Transfers	
Pending transfers in	7
Pending transfers out	2
Pending direct admissions	

Bed Status				
Occupancy				
ED accessible bed occupancy			108.6%	
Total occupancy			85.0%	

Ward Occupancy (all wards)				
<input checked="" type="checkbox"/> ED accessible wards	STEP	Current inpatients	Total available beds	Empty available beds
Total		190	175	-15
1KILA (1 KILLARA)	0	33	33	
2BAR (2 BARKALA)	0	32	32	
2GUN (2 GUNYAH)	0	27	24	-3
3COO (3 COOINDA)	0	32	24	-8
3EDO (3 EDO)	0	9	8	-1
3JAR (3 JARA)	0	30	28	-2
2YAR (YARRABEE / OCU)	1	27	26	-1



Reactive strategies to avoid...

- Open surge capacity
- Cancel planned admissions
- Escalate to encourage discharges



Any Questions?





- **Understand your In-flows**

- ED activity
- Planned

- **Manage Inpatient stays**

- EDDs
- LOS
- W4W
- Outliers



Contact us for:

- Education and advice around the Patient Flow Systems Framework
- Support and training on the Patient Flow Portal and Electronic Patient Journey Board

patientflow@doh.health.nsw.gov.au Tel 9391 9368

Damian Miners 0477 335 278

LHDs: CC HNE FW NBM NS MLHD WNSW WS

Richard Yarlett 0409 672 036

LHDs: IS MNC NNSW SCHN SES S SV SWS SNSW

