

# ABM Portal

Prepared by **Alfa D'Amato**  
February 2014

# Data! How to find it...

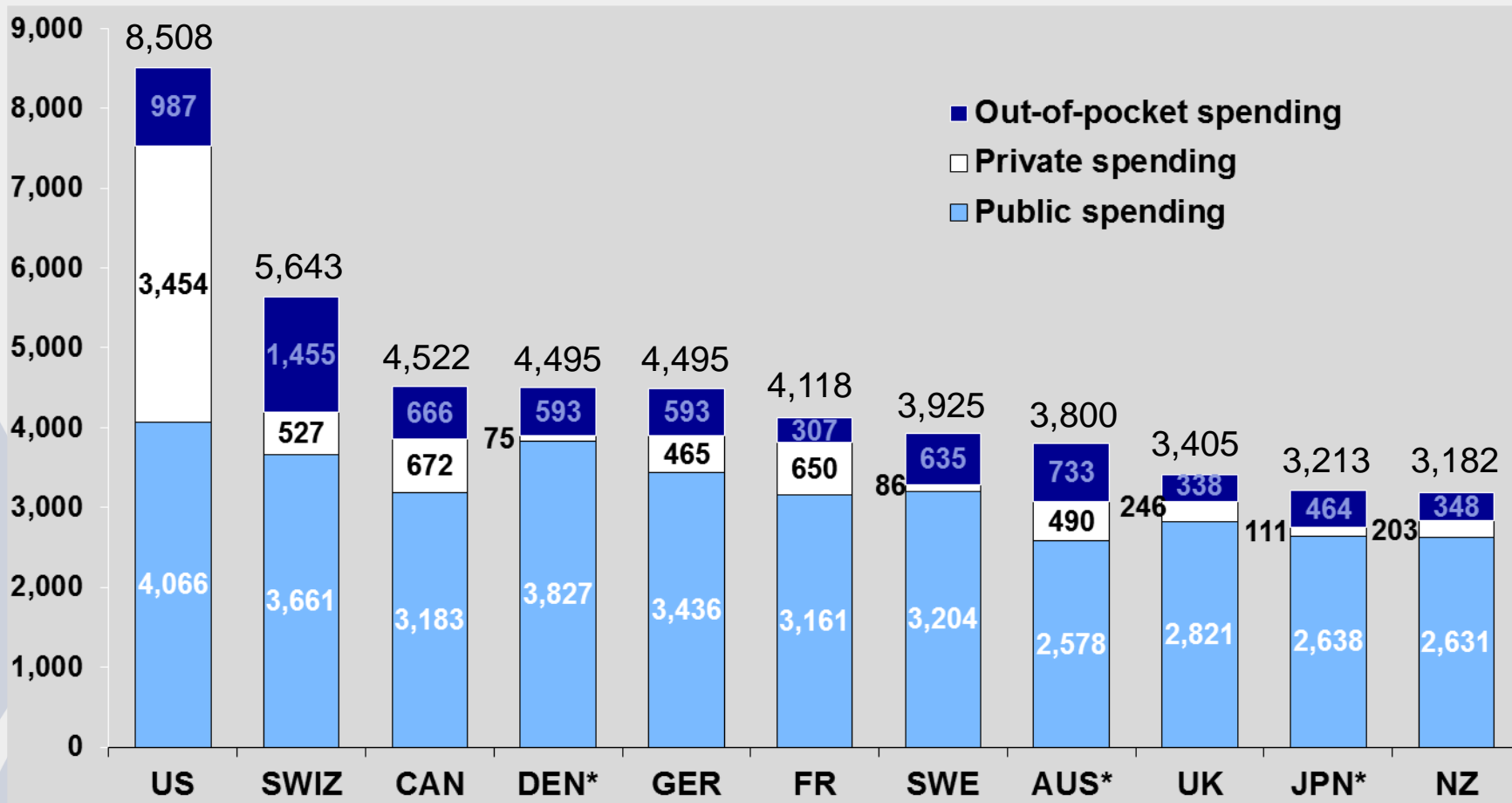
## ABM Portal

- Benchmarking
- Linked data
- Cost (Price assessment)
- *Stimulating*

# Health Care Spending per Capita by Source of Funding, 2011

## Adjusted for Differences in Cost of Living

Dollars (\$US)



\* 2010.

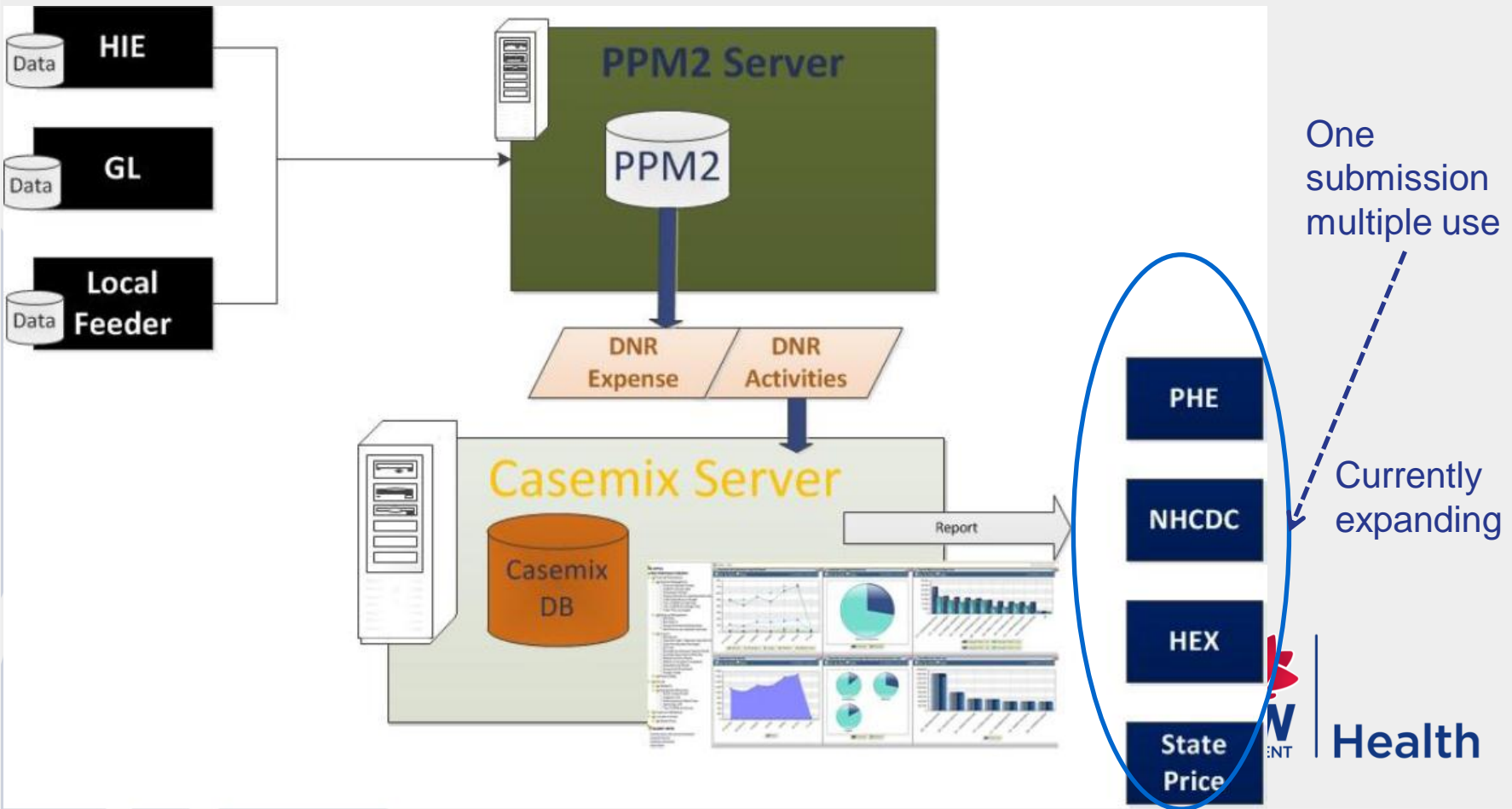
Source: OECD Health Data 2013.



Health

# Infrastructure & Processes

- One submission multiple use = reconciliation

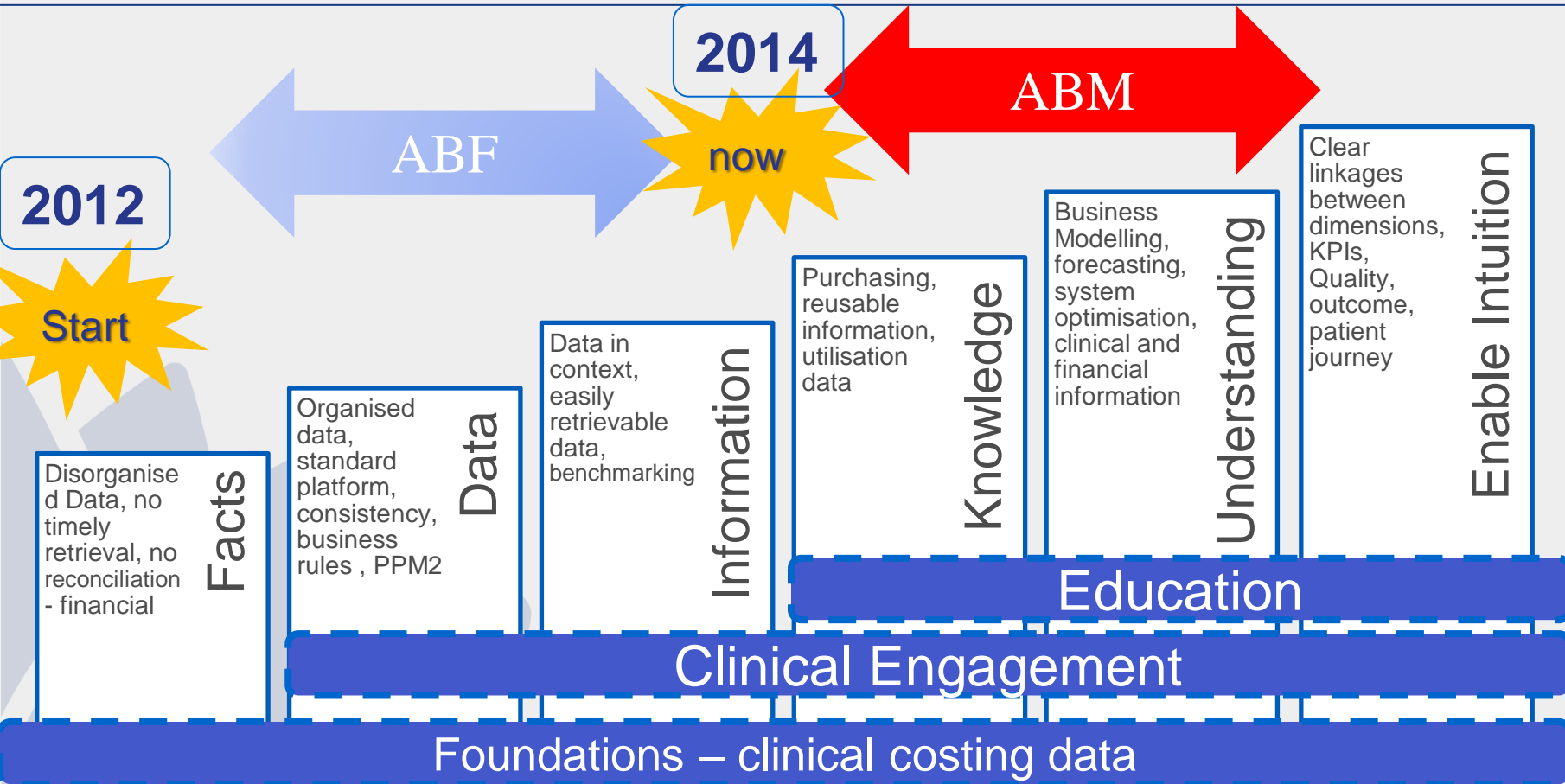


# ABM Portal - Background

---

- Cost data submitted by LHD/SHN (DNR – District and Network Return)
- Security – Patient level data
- Access and Training – User champions
  - Currently rolled out to 12 LHDs

# ABF implementation in NSW

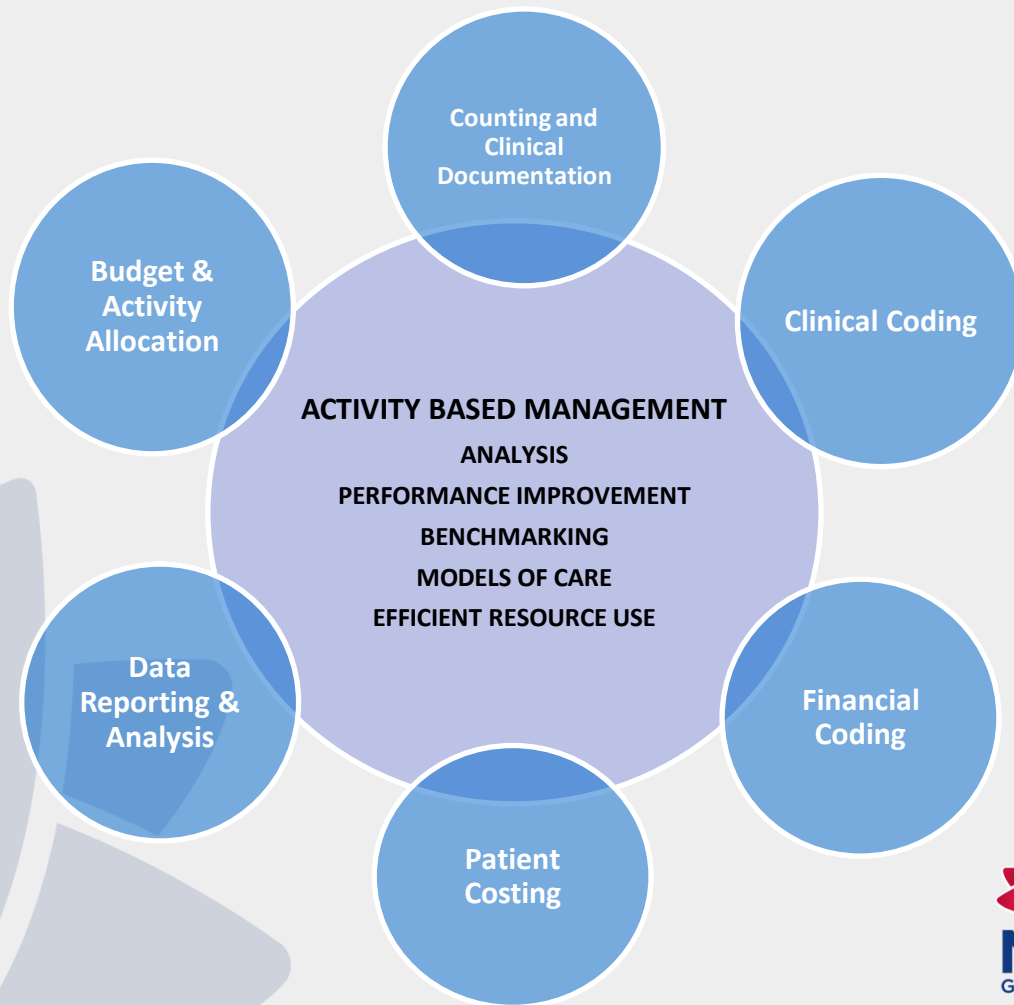


Ladder of Business Intelligence (LOBI)



Health

# So what is Activity Based Management (ABM)?



# Evidence-informed policy-making

- **“Policy decisions do not wait for excellent information to become available; decisions will be taken even where ‘evidence’ is fragmentary and uncertain”**
- **‘evidence [..] can be improved if appropriate standards of transparency and accountability are followed**



# Is it just about the numbers?

---

“Businesses don’t run on numbers, they run on responses to numbers”

*Bri Williams, New Truths About Numbers, In the Black*



Health

# The ABM Portal

---

- **Transparency of information**
- A business intelligence tool that gives clinicians, managers and other staff a window into the detailed operation of their facility and the patients it serves
- Currently includes patient level costing results
- It was designed in collaboration with clinicians
- Straight forward and simple to use