

Data Master Class

Whole of Hospital Program 2014

Luke Worth

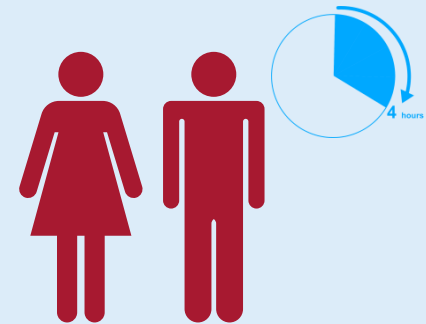
Director, Whole of Hospital Program

27th February 2014

What is the Whole of Hospital Program?

- Working together to provide the right healthcare for people in NSW every day
- Health service ownership and leadership to improve and sustain access to care
- Development of local skills and capacity for organisational change
- Improving partnerships and connectivity at system and local levels

From January to December 2013,
160,000 more patients
(compared with the same facilities in the same period for 2012)
received the care they needed to
either get home or into a hospital
bed within 4 hours

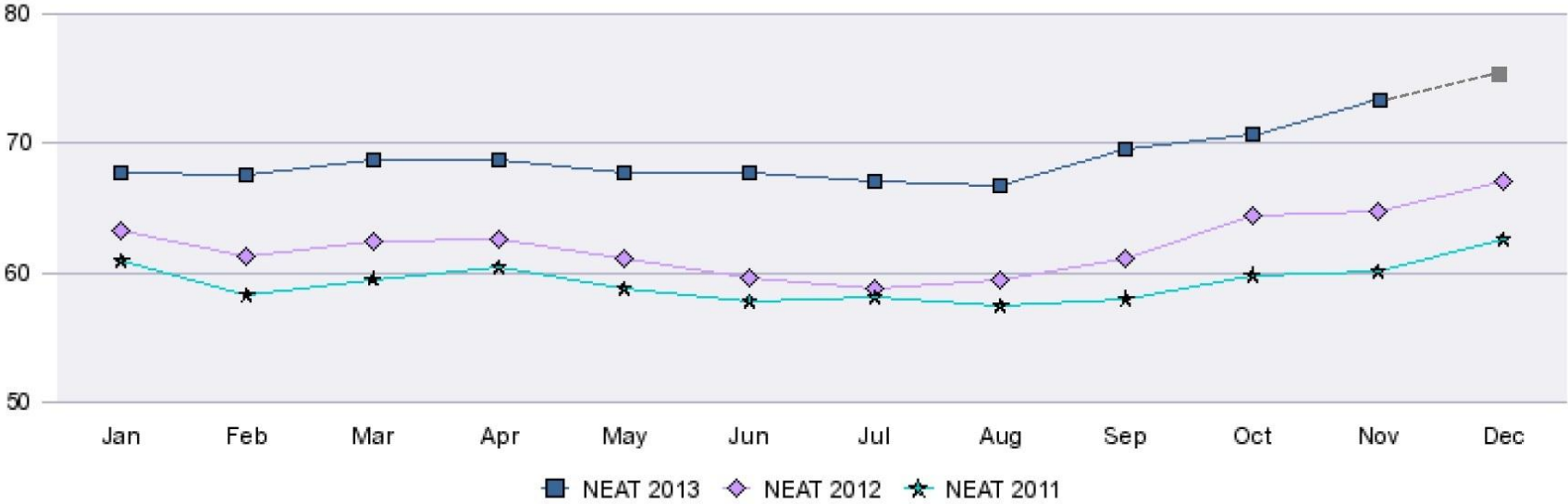


NSW NEAT improved by 9.6% in 2013 compared to 2012

New South Wales

Preliminary data only - - - - -

NEAT

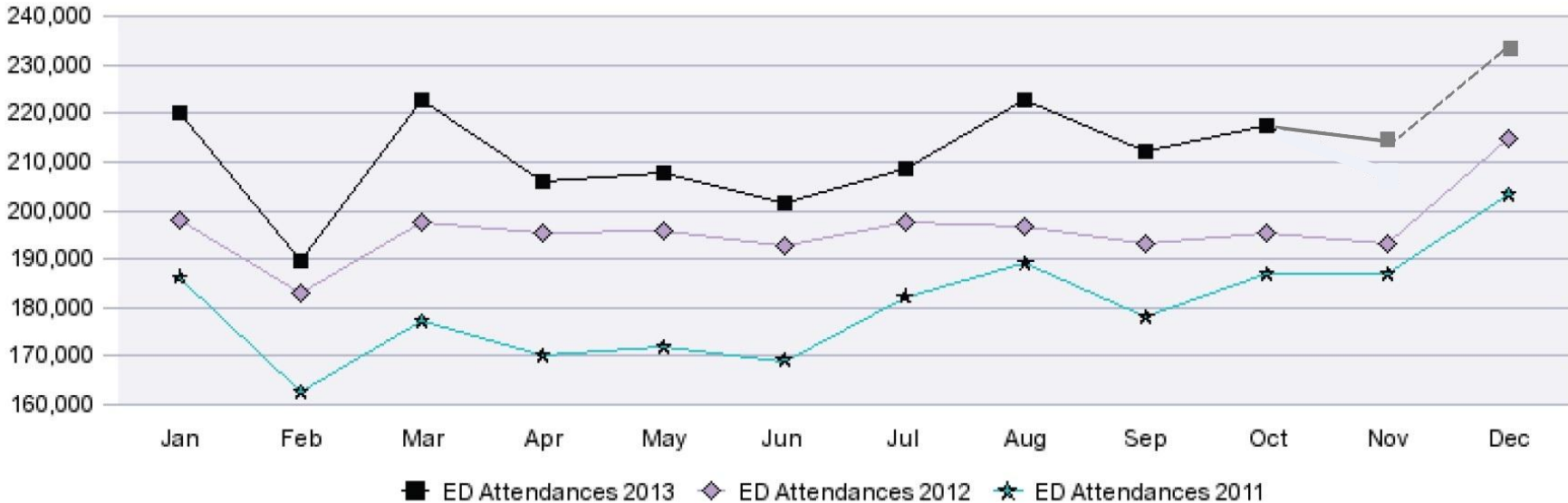


ED Presentations increased by 8.3% from 2012 to 2013

New South Wales

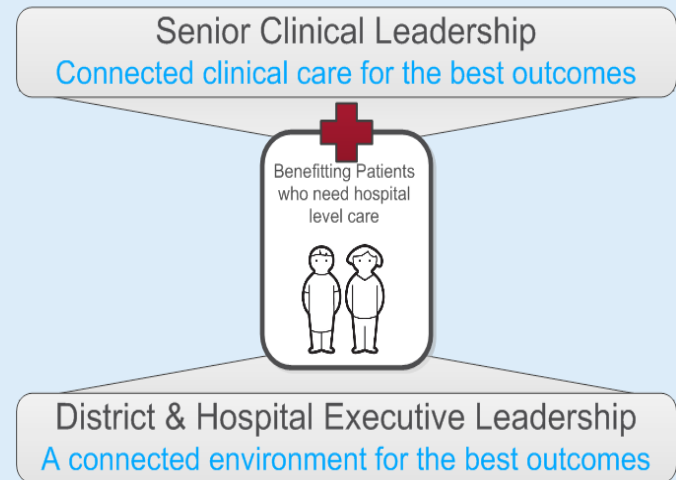
Preliminary data only - - - - -

ED Presentations



What worked in NSW 2013?

- Diagnostic process to understand business
- Focus on the data
- Sharing *proven* solutions
- Prioritizing top 3-5 solutions
- Central resource availability
- Site engagement and “shifting” the naysayers
- Connecting the sector
- Including all eligible ED’s
- Trajectories and expectations
- Performance monitoring



- ✓ Health service led strategy to manage system demand and capacity
- ✓ Local partnerships

2014 Areas of focus

- Local capability development
- LHD/facility support and performance monitoring
- Connecting the sector

- Master classes
- Inter district assistance
- Working with Subject Matter Experts
- E-learning tools

- Assistance with data reporting
- Implementation of Program Leads
- Timeline studies
- Models of care
- Linking with others

- Joint website with key tools
- Policy development & implementation
- Joint planning across Pillars, Ministry and other agencies

ACI

CE Group

ECI

HETI

Senior Clinicians

PFP

CEC

HSIPR

Workforce

MHDAO

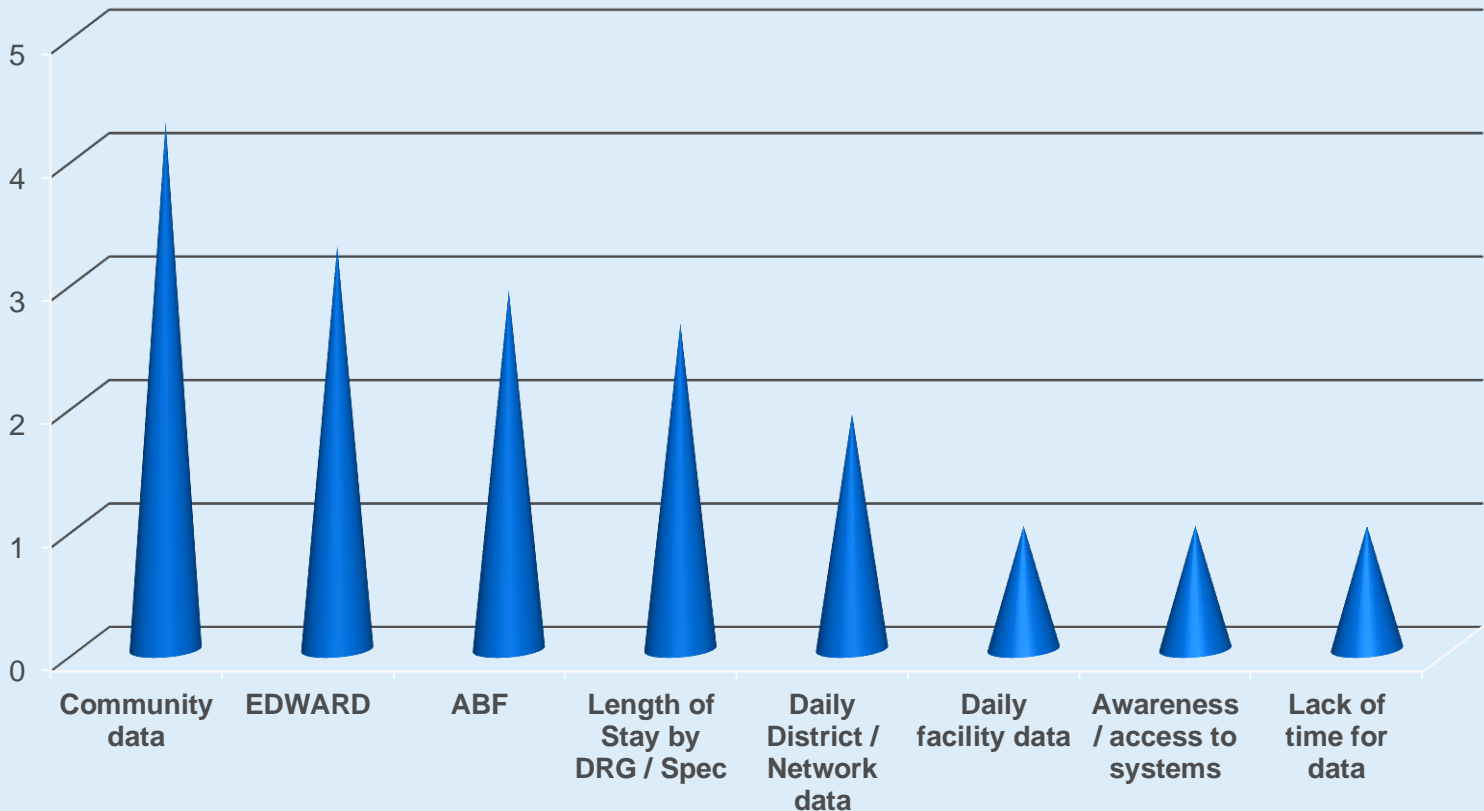
Performance Framework

External Expertise

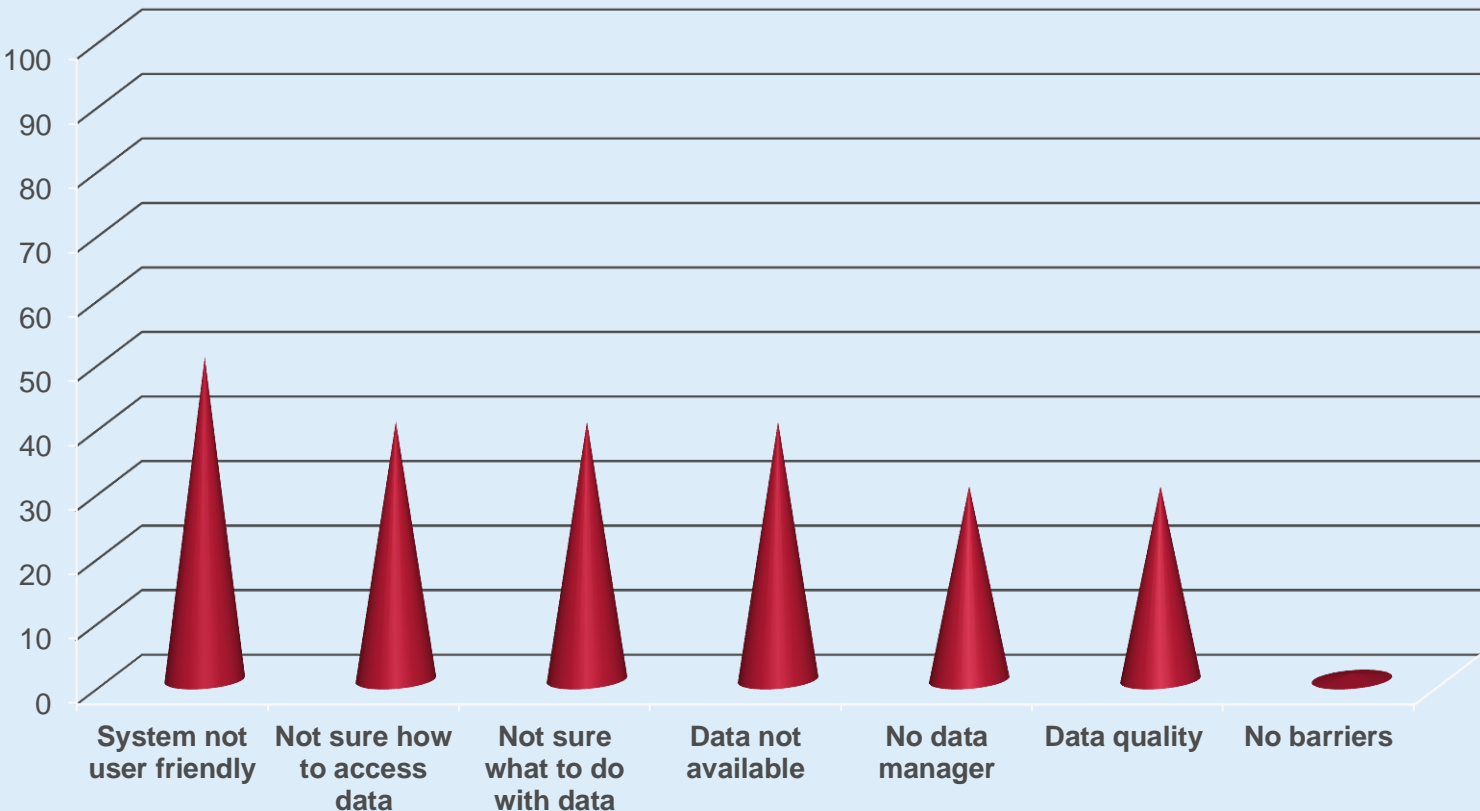


LHD

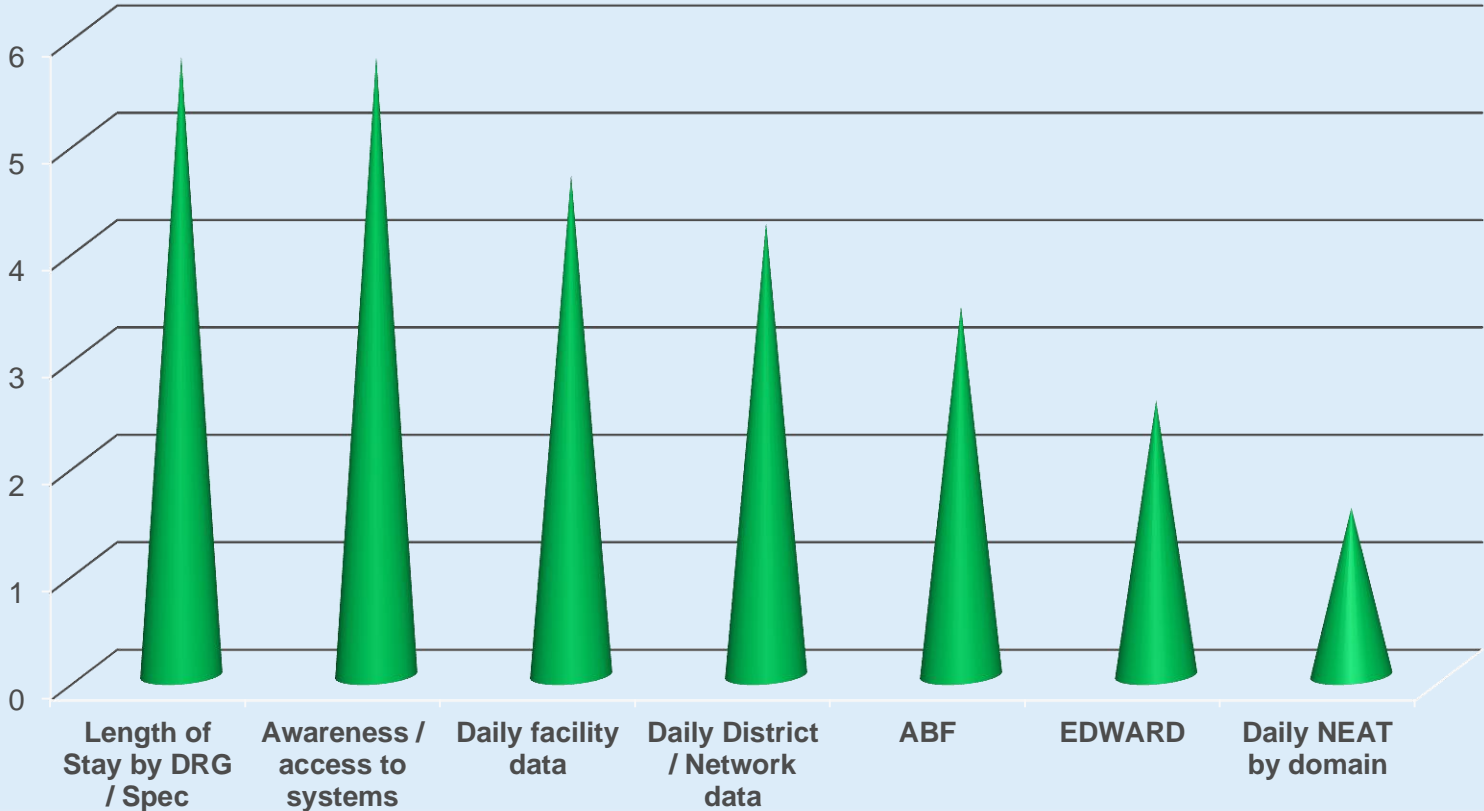
What are our top 5 Data Priorities?



Barriers to data access and usage



Most useful operational data



Whole of Hospital Program

- ✓ We value our patients' time
- ✓ We all have our part to play
- ✓ We value staff involvement

