

EBI Program

EDWARD Business Implementation Program



Powered by **EDWARD**

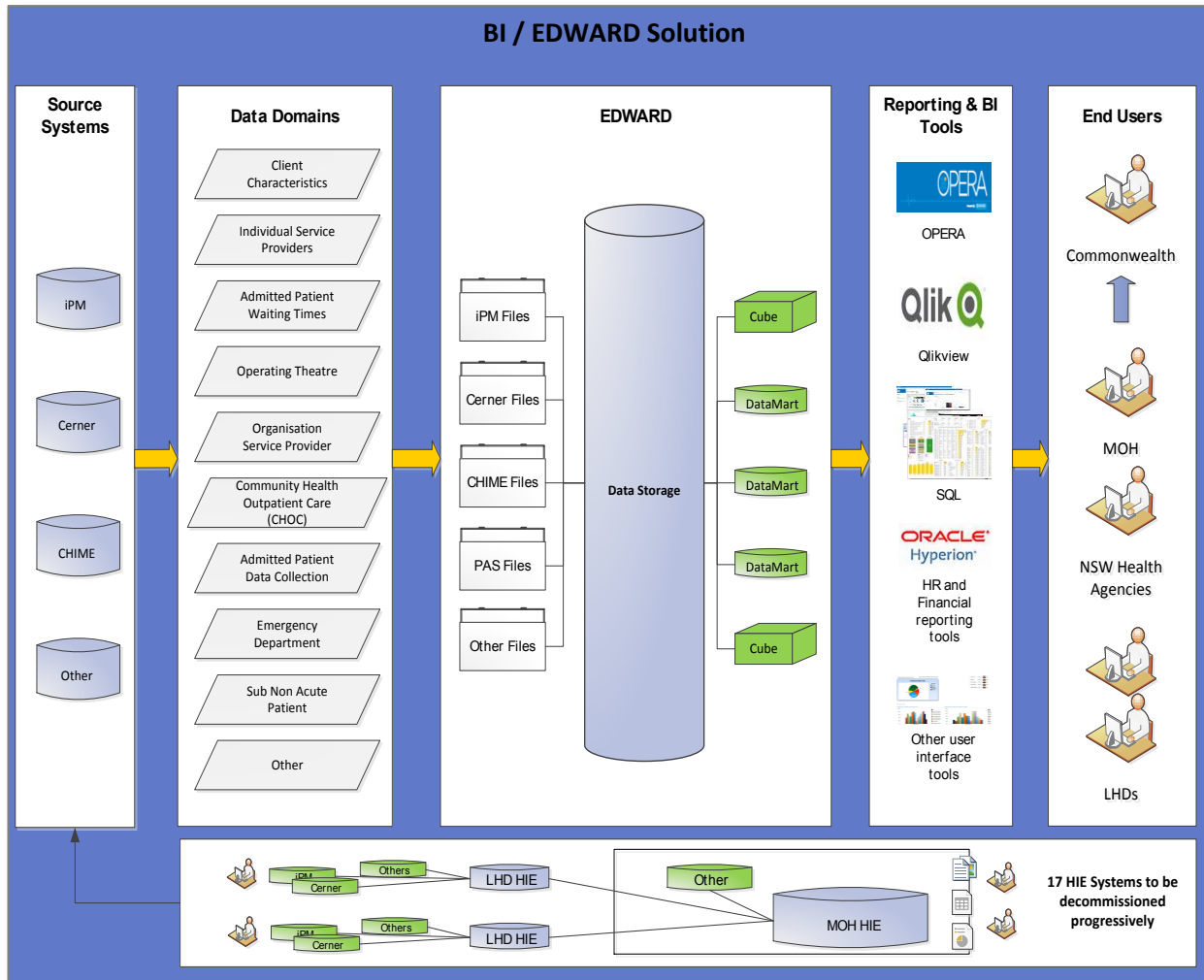
*OPERA*ational Performance Enterprise Reporting Application

Whole of Health Program MASTER CLASS #7

23 October 2015



EDWARD is a strategic information asset to allow all NSW Health organisations to collect, manage and safely use high quality data and information across all part of the entire health system



Complementary internal Initiatives

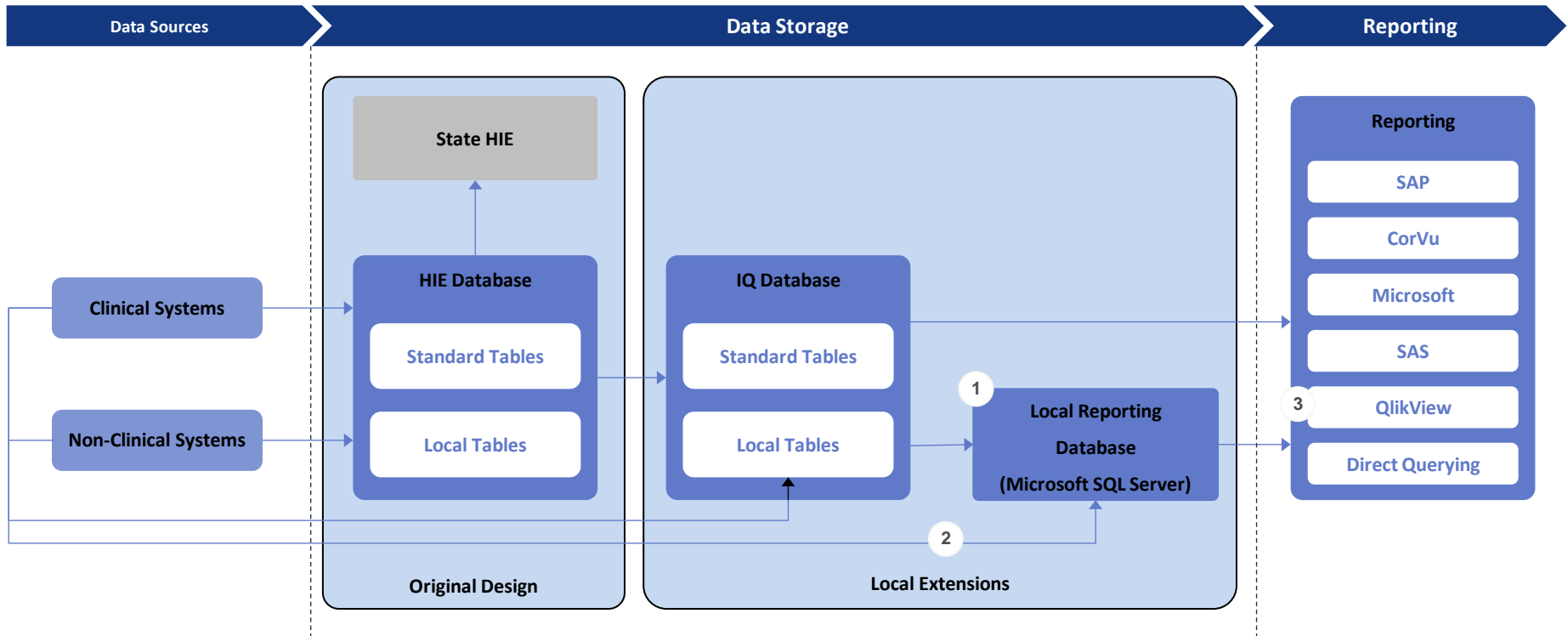
- ▶ Development of Analytics Strategy
- ▶ Implementation of E-health ICT Strategy
- ▶ Development of State Wide Data Architecture
- ▶ Review & Strategy for QLIKVIEW
- ▶ Development & Rollout of OPERA

Broad Business Outcomes

- ▶ Fulfil ABF Requirements
- ▶ Support Integrated Care Provision
- ▶ Support Clinical Research & Development
- ▶ Improve Service Provision across NSW Health
- ▶ Improve Models of Care

Current State Evolution

LHDs / SHNs have developed local reporting and analytics solutions that are critical to their ongoing business and operational needs.



1

- The need for increased agility and performance has resulted in the deployment of a secondary local reporting database.
- The secondary local reporting database is the strategic local reporting database for many districts.

2

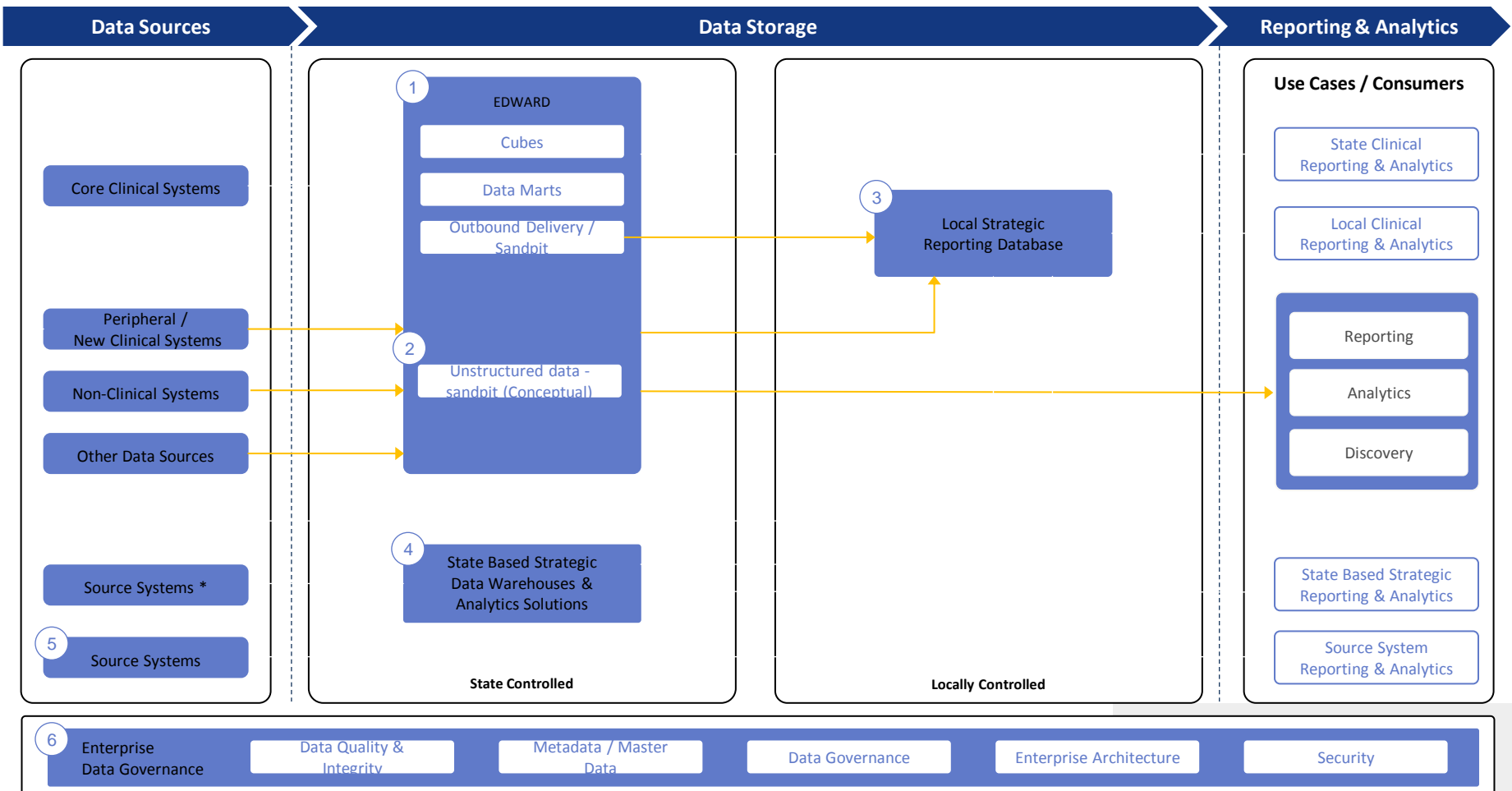
- There are a number of source data feeds directly from source systems bypassing the HIE and IQ database.

3

- Recent acquisition of QlikView licenses across NSW Health has resulted in the uptake of QlikView.
- Number of sites are in the process of transitioning to QlikView or intend to integrate QlikView into the existing landscape.

Future State Architecture

The proposed future state architecture is illustrated below. The proposed architecture is aligned to the decommissioning approach principles and has been developed with input from key representatives from eHealth NSW and the Ministry of Health.



* Refers to non-clinical systems i.e. Oracle and VMoney



	Data Domains	In Scope Sources Systems
Release 1	<p>Client</p>	<ul style="list-style-type: none"> • iPM Client Registration Module • Cerner HNA Millennium
	<p>Individual Service Providers</p>	<ul style="list-style-type: none"> • iPM Professional Carers Module • Cerner HNA Millennium
	<p>Admitted Patient Waiting Times</p>	<ul style="list-style-type: none"> • iPM Wait list Module • Cerner HNA Millennium – Encounters
	<p>Operating Theatre</p>	<ul style="list-style-type: none"> • iPM Theatre Module • Cerner SurgiNet
	<p>Community Health Outpatient Service Events</p>	<ul style="list-style-type: none"> • iPM Outpatient Scheduling Module • CHIME
Release 2A	<p>Emergency Department</p>	<ul style="list-style-type: none"> • iPM Emergency Department Module • Cerner FirstNet
	<p>Admitted Patient</p>	<ul style="list-style-type: none"> • iPM Patient Administration System • Cerner HNA Millennium Encounters / HIM Chart Coding
	<p>Sub and Non-Acute Patient</p>	<ul style="list-style-type: none"> • Snaptix

Mandate

The EDWARD Business Implementation (EBI) Program is mandated to provide a baseline of ***standard operationally focussed reports*** for NSW Health Local Health Districts (LHDs) to aid LHDs in running their business by providing a single source of truth across all of NSW Health around ***performance information*** for Wait List (WL), Emergency Department (ED) and Operating Theatre based on **extensive consultation** with program partner LHDs and defined Business Requirements.

OPERA

The Operational Performance Enterprise Reporting application (OPERA) is a clinical operational system that is focused on enriching patient and clinical process whilst driving whole system performance across NSW Health.

The deployment of OPERA is the first step in the journey of ***improving system capacity and reforming clinical process across all area Health Services***, with a better alignment of resources and patient flows between acute, subacute primary and community based care. That is, the **continuum of care throughout the entire health journey both outside and inside facilities.**

Clinical process reform is enabled by linking KPI's or Service Agreement Measures to a baseline of standard operational focused reports that highlight best practice and that can be leveraged across other LHDs for clinical uplift

The use analysis tools, such as SAS, MS Excel, MS Power Pivot, Business Objects and Qlikview facilitate ad hoc or targeted analysis but they do not provide the common single of view of health that is required to leverage process redesign and improved patient care across the entire network.

OPERA Purpose



Facility
& Service Unit



LHD



UP/DOWN ORGANISATION PERSPECTIVES

EDWARD's^[1] strategic reporting application, **OPERA**, provides a baseline suite of **standard operationally focussed reports** for NSW LHDs to aid LHDs in running their business by providing a **single source of truth** across all of NSW Health for both **performance information** and **key contextual information** for:

- ❑ Emergency Department (ED)

OPERA users will be able to **take an information journey** through NSW Health. From the facility → LHD → State level and across NSW Health from executives → management → frontline staff, everyone will be able to **follow a story** as they investigate their line of inquiry in order to take action.

ACROSS FROM EXECUTIVES TO MANAGEMENT TO THE FRONT LINE

^[1] EDWARD - Enterprise Data warehouse for Analysis, Reporting and Decision Support. EDWARD has been designed to replace the Health Information Exchange (HIE) as NSW Health's strategic data source for performance monitoring, health service purchasing and funding, health service planning, and disease surveillance.

INTEGRATED REPORTING DELIVERY PLATFORM

KPI SCORECARDS

Trend Graphs,
Listing Reports, Sparklines

OPERATIONAL FOCUS

CONTROL PANEL

Data Visualisation via
KPI, Contextual & Point
of Interest Dashboards &
Activities Summaries

DETAIL REPORTS

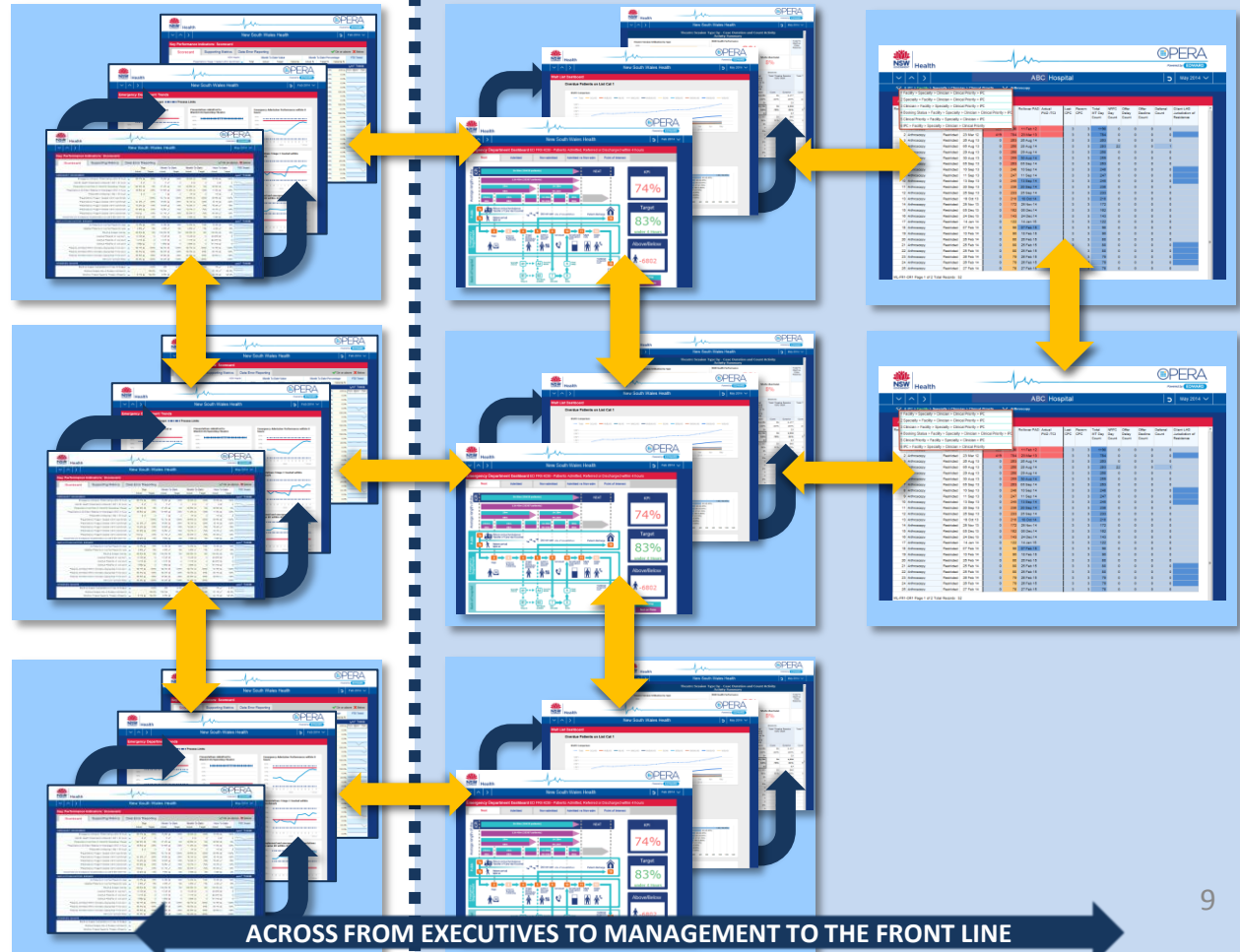
Detail including
unit record
(patient) data

Facility 
& Service Unit

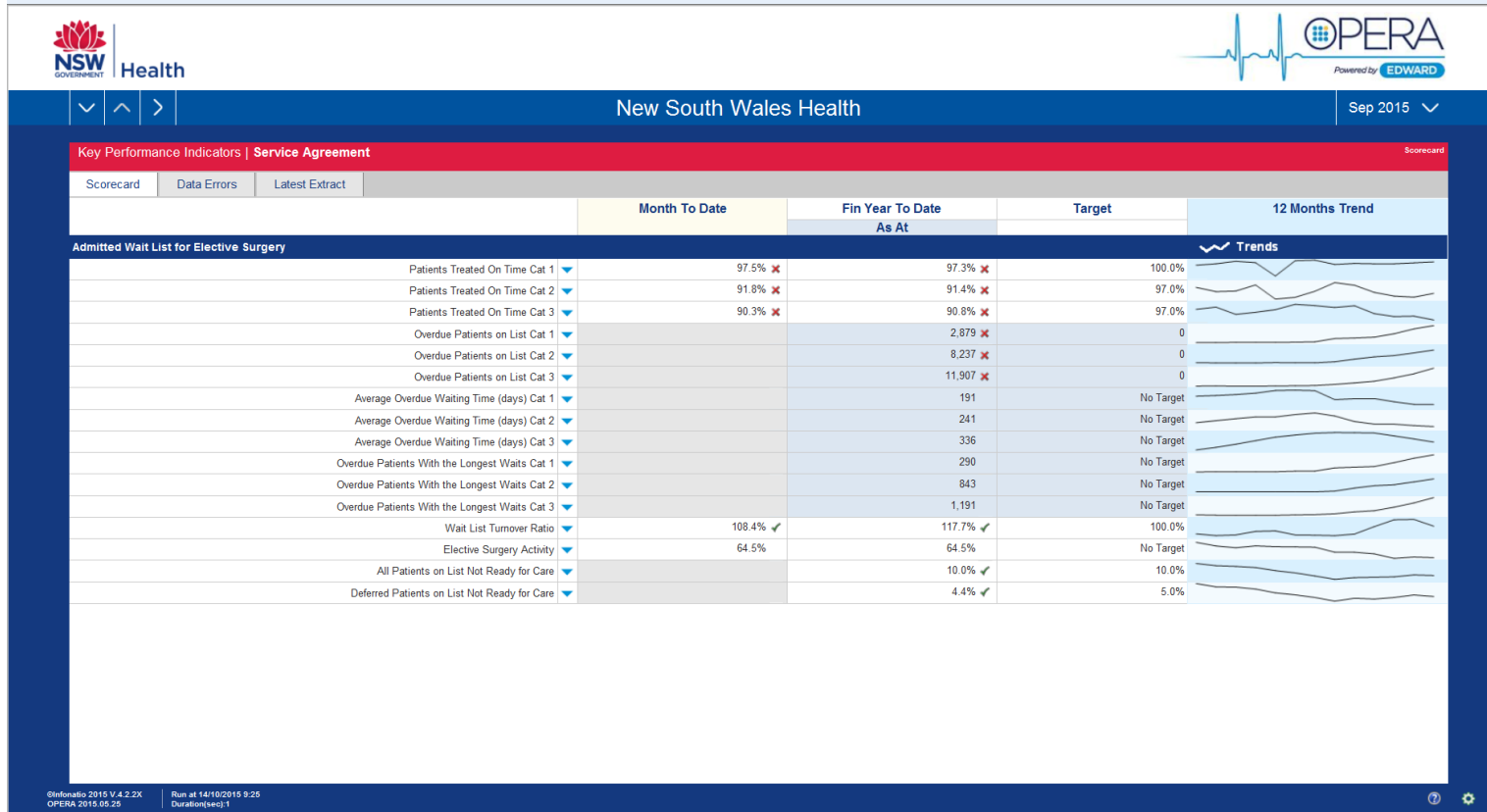
LHD 

State 

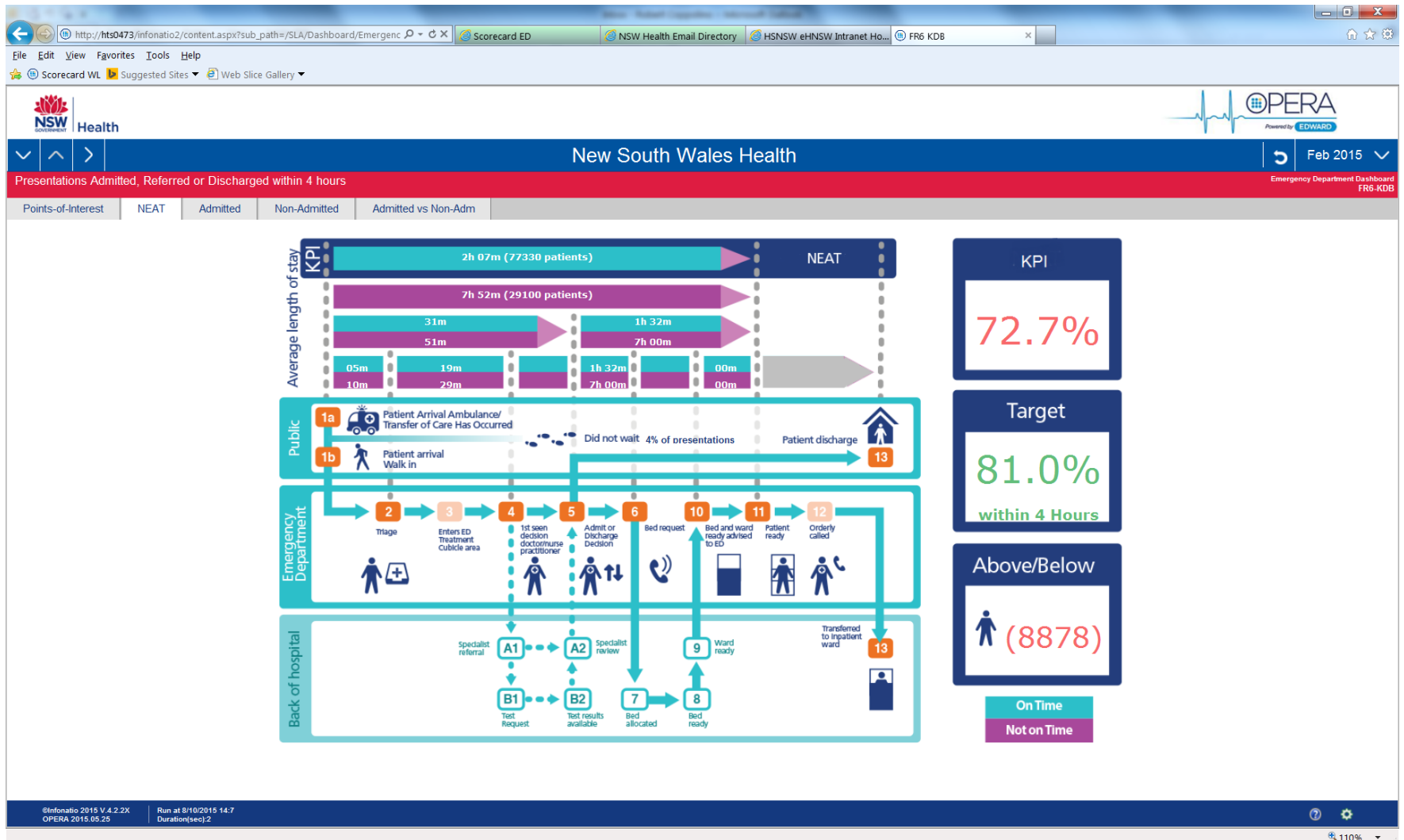
UP/DOWN ORGANISATION PERSPECTIVES



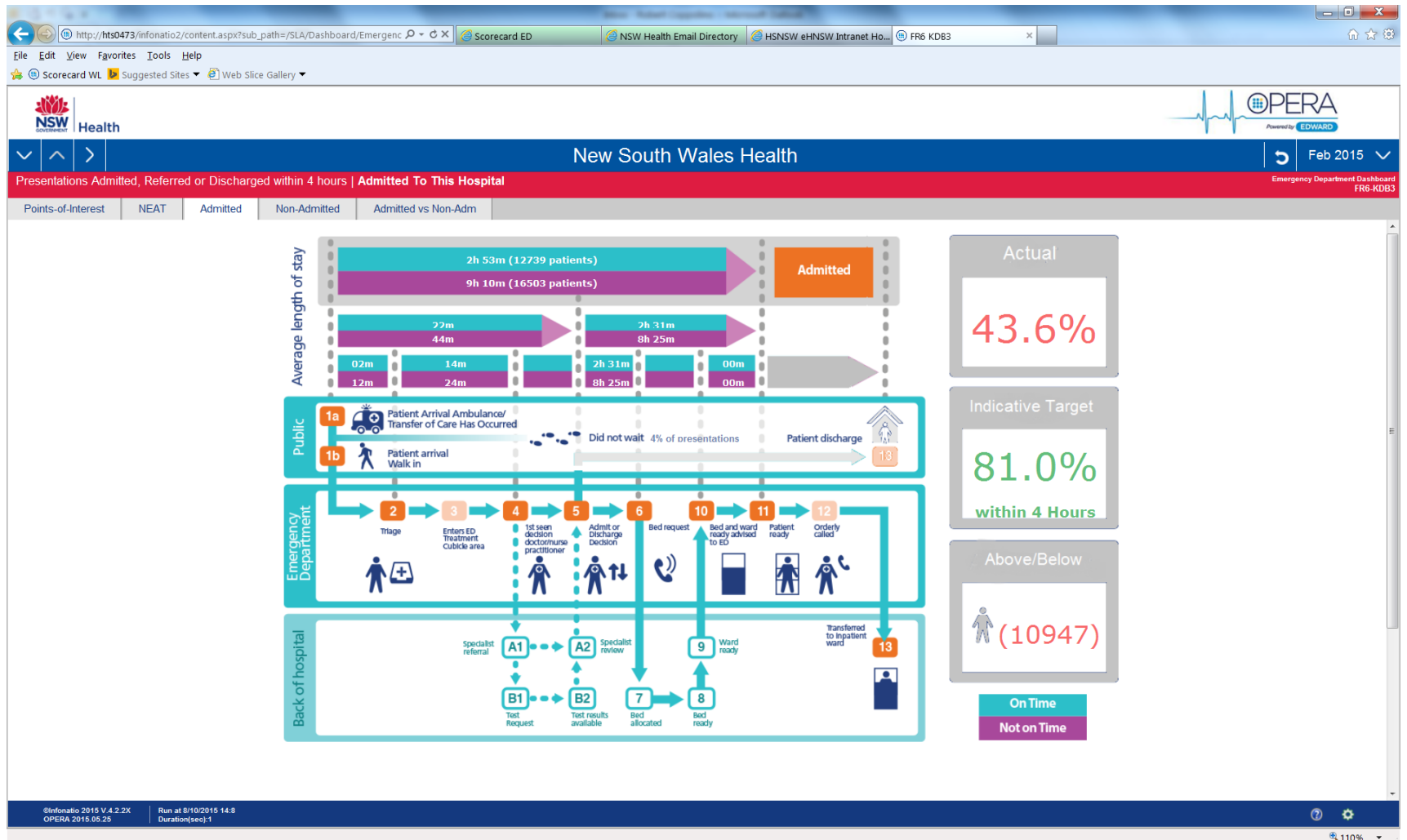
Example ED KPI Scorecard



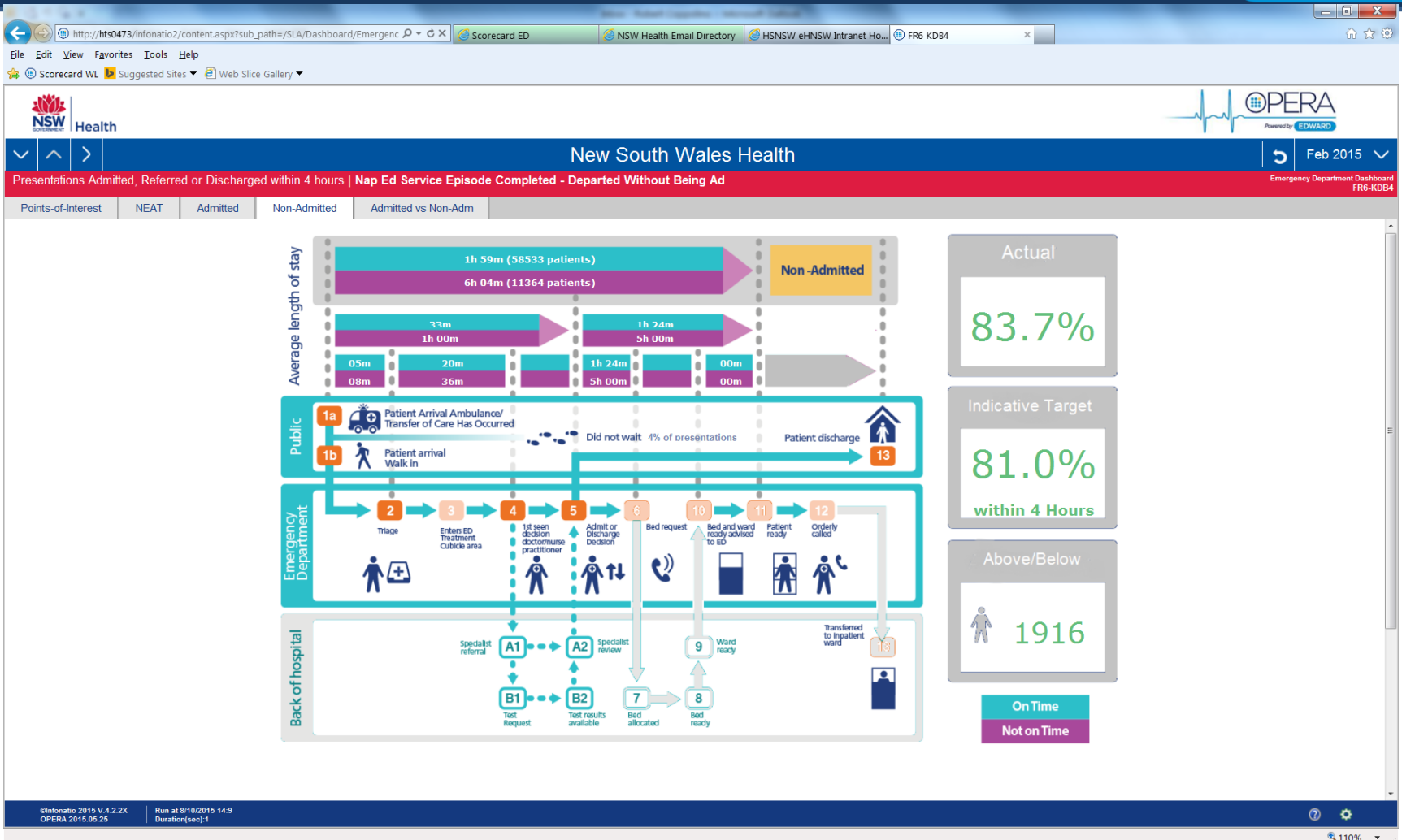
Example ETP



Example ETP Admitted



Example ETP Non Admitted



OPERA Implementation Framework

EDWARD and OPERA Implementation Framework

LHD/SN engagement in the implementation of OPERA Wait List Reports and the transition to EDWARD for all Wait List Reporting and Analysis

Executive Summary

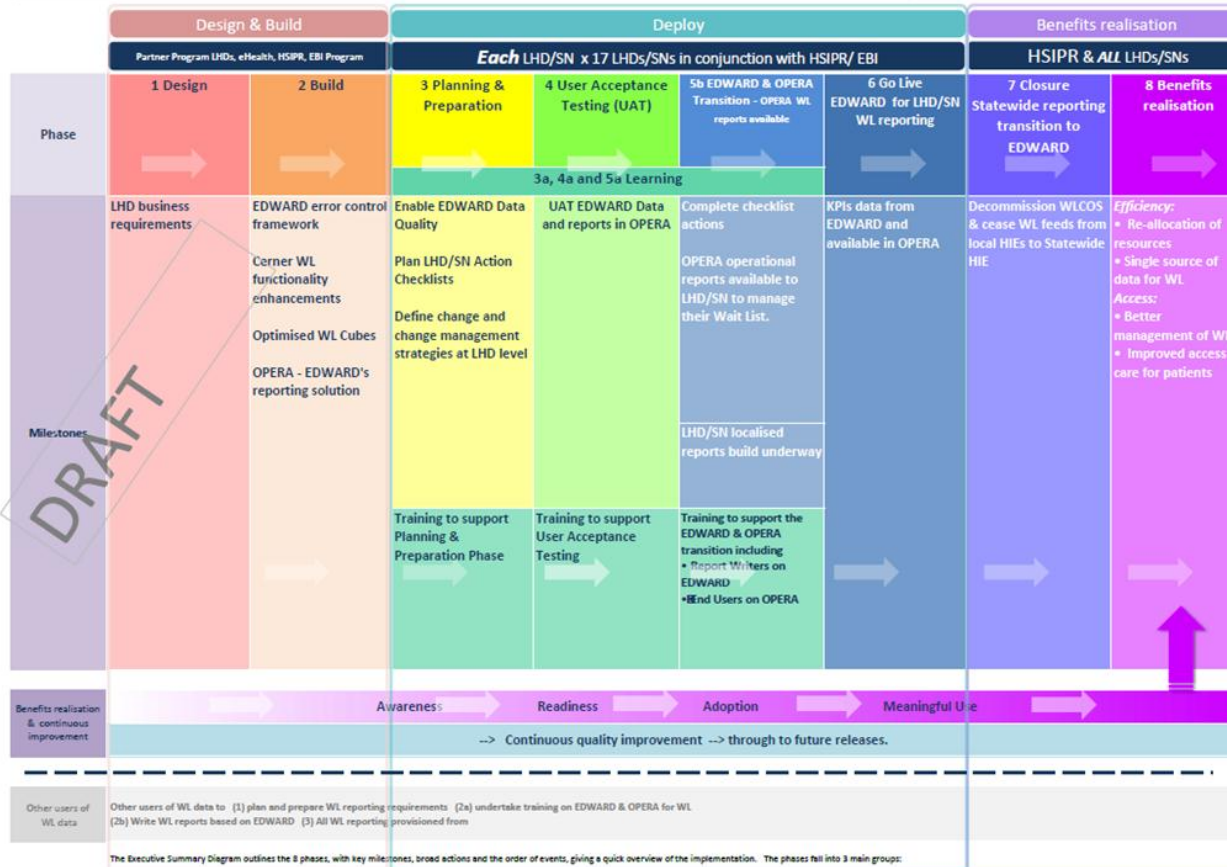
The Executive Summary Diagram outlines the 8 phases, with key milestones, broad actions and the order of events, giving a high level overview of the implementation, for the whole of NSW Health LHDs/SNs.

The EDWARD and OPERA implementation will be managed by the EBI Program, an initiative of HSIPR, in conjunction LHDs/SNs, supported by HSIPR & eHealth



Powered by EDWARD

For more information on EDWARD, OPERA and the EBI Program contact Kate Holt 0412 340 840 or click: <http://internal.health.nsw.gov.au/data/ebi-program/index.html>



You are here

Navigation

- Overview
- Exec Summary
- Phases
- Flowchart

DRAFT

The Executive Summary Diagram outlines the 8 phases, with key milestones, broad actions and the order of events, giving a quick overview of the implementation. The phases fall into 3 main groups:

Program team members

Program team members	Program Director	0402 881 668	Robert.coppolino@health.nsw.gov.au
	Robert Coppolino	8918 1601	
	Solutions Architect	0448 789 939	james.prior@health.nsw.gov.au
	James Prior	8918 1606	
	Senior Business Analyst / Training Lead	0458 573 912	jillian.ashby@health.nsw.gov.au
	Jillian Ashby		
Change Manager	0412 360 860	kate.holz@health.nsw.gov.au	
Kate Holz	8918 1608		

















Want more information about OPERA?

[http://internal.health.nsw.gov.au/data/opera/documents/
Presenting-OPERA-V-1-0.pdf](http://internal.health.nsw.gov.au/data/opera/documents/Presenting-OPERA-V-1-0.pdf)

And more about the EBI program?

<http://internal.health.nsw.gov.au/data/ebi-program/index.html>

Appendix 1: EDWARD Phase 2

Data Domains	In Scope Sources Systems
 Admitted Patient Private Sector	<ul style="list-style-type: none"> • ISCOS (to be replaced by PHISCO)
 Admitted Patient Interstate	<ul style="list-style-type: none"> • Interstate X Flows
 Radiotherapy waiting times	<ul style="list-style-type: none"> • VARIS - Legacy • LANTIS - Legacy • ARIA (C) • Mosaiq (C)
 Non-admitted Patient Cancer Notifications	<ul style="list-style-type: none"> • VARIS - Legacy • LANTIS - Legacy • ARIA (C) • Mosaiq (C)
 NSW Ambulance Services	<ul style="list-style-type: none"> • NSW Ambulance CAD System(S) • PHCRS/ PBRC
 Mental Health	<ul style="list-style-type: none"> • SCI-MHOAT • FISCHE
 Drug and Alcohol	<ul style="list-style-type: none"> • Matisse
 Finance	<ul style="list-style-type: none"> • SMRT (Oracle Financials)
 Human Resource	<ul style="list-style-type: none"> • Oracle HR • MicroPay • Supero (C) • Stafflink
 Midwives / Birth Defects / Birth Notification	<ul style="list-style-type: none"> • ObstetriX • MDCOS
 Visiting Medical Officer	<ul style="list-style-type: none"> • VMONEY
 Ancillary Services Pathology	<ul style="list-style-type: none"> • Cerner PathNet (S)
 Ancillary Services Radiology	<ul style="list-style-type: none"> • PACS-RIS • Cerner RadNet
 Ancillary Services Pharmacy	<ul style="list-style-type: none"> • Cerner PharmNet • iPharmacy (S)
 Death Notification	<ul style="list-style-type: none"> • Australian Bureau of Statistics Deaths Coded Data Set • NSW Births, Deaths and Marriages
 Unique Patient Identifier	<ul style="list-style-type: none"> • Enterprise Patient Registry (EPR) • SUPI (for MHUPI)
Allied Health	<ul style="list-style-type: none"> • AHMIS
Community Health	<ul style="list-style-type: none"> • CERNER

Business Information (BI) Business Case – Phase 2