

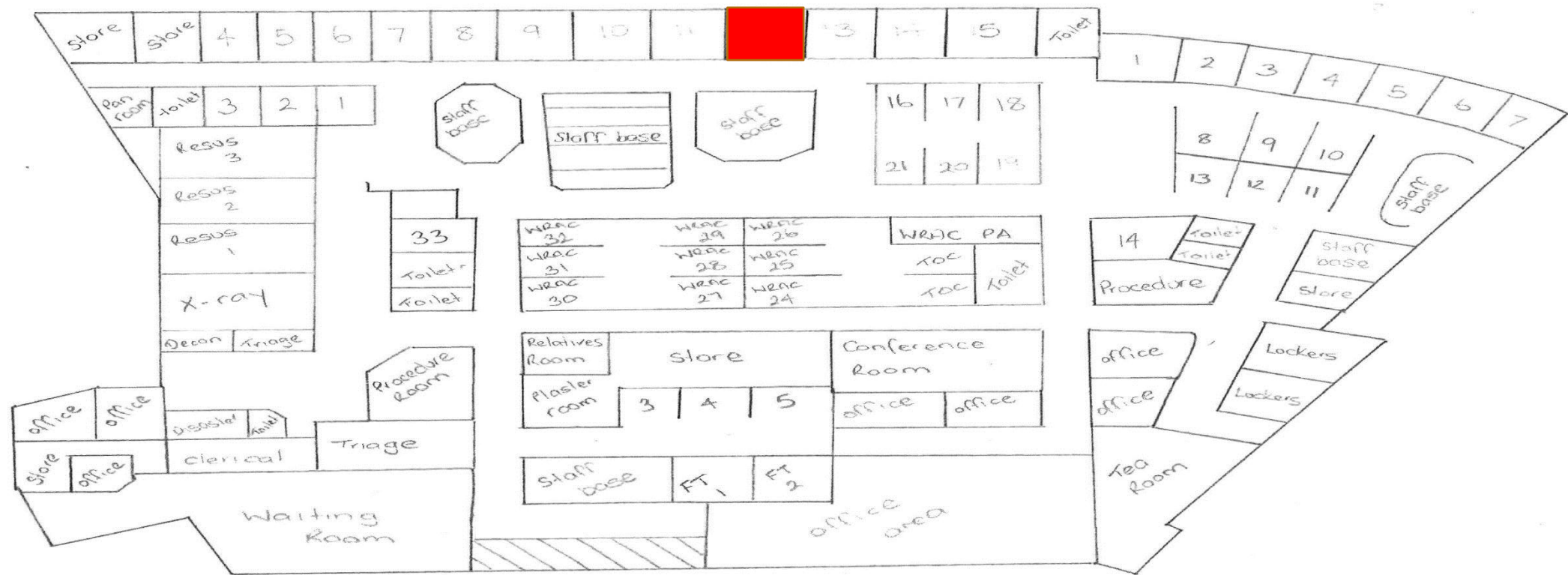
“Challenges for
consideration for successful
management of an ED post
critical incident”

Nepean Emergency
Department




Critical Incident January 2016



Location of incident



Crime scenes

-  Crime scene
-  Police checkpoint
-  Police barricade



Functional ED remaining



14 Short stay beds converted into Acute care beds

5 Fast track beds converted in WRAC /

Department on the night

- Time of Incident: 2230hrs approx.
- 39 patients (15 admissions)
- 5 patients as a result of the incident (3 firearm injuries)
- 44 staff members, increasing to 60+ (Medical, Nursing, Clerical, Security, AHNM, Met, WP, Cleaners and Executive).
- Ambulance bypass from 2300 - 0830
- Police crime scene from 2230 - 0530

Take home messages

- Be prepared, go back to your departments and think about how could you operate if you lose you acute care base
- Have you got a back up resus room?
- Develop a check list for your staff of what you need printed/written down at the time an incident occurs
- How long could you function at reduced capacity?

Take home messages

- Access to your department

