

# Why are we here?

---

**A/Professor Beth Kotzé**

Director, MH-Children and Young People (MH-CYP)  
Mental Health Drug and Alcohol Office (MHDAO)

# The Masterclass

---

- Overall goal: Ensure the patient journey:
  - is patient focused
  - is clinically safe and appropriate
  - is cost-effective
  - links patients to the most appropriate clinical service and setting
- Opportunity to learn about others' successes
- Support LHDs to improve integrated responses for children and young people, their families/carers across service streams.

# Mental Health in NSW – the changing climate

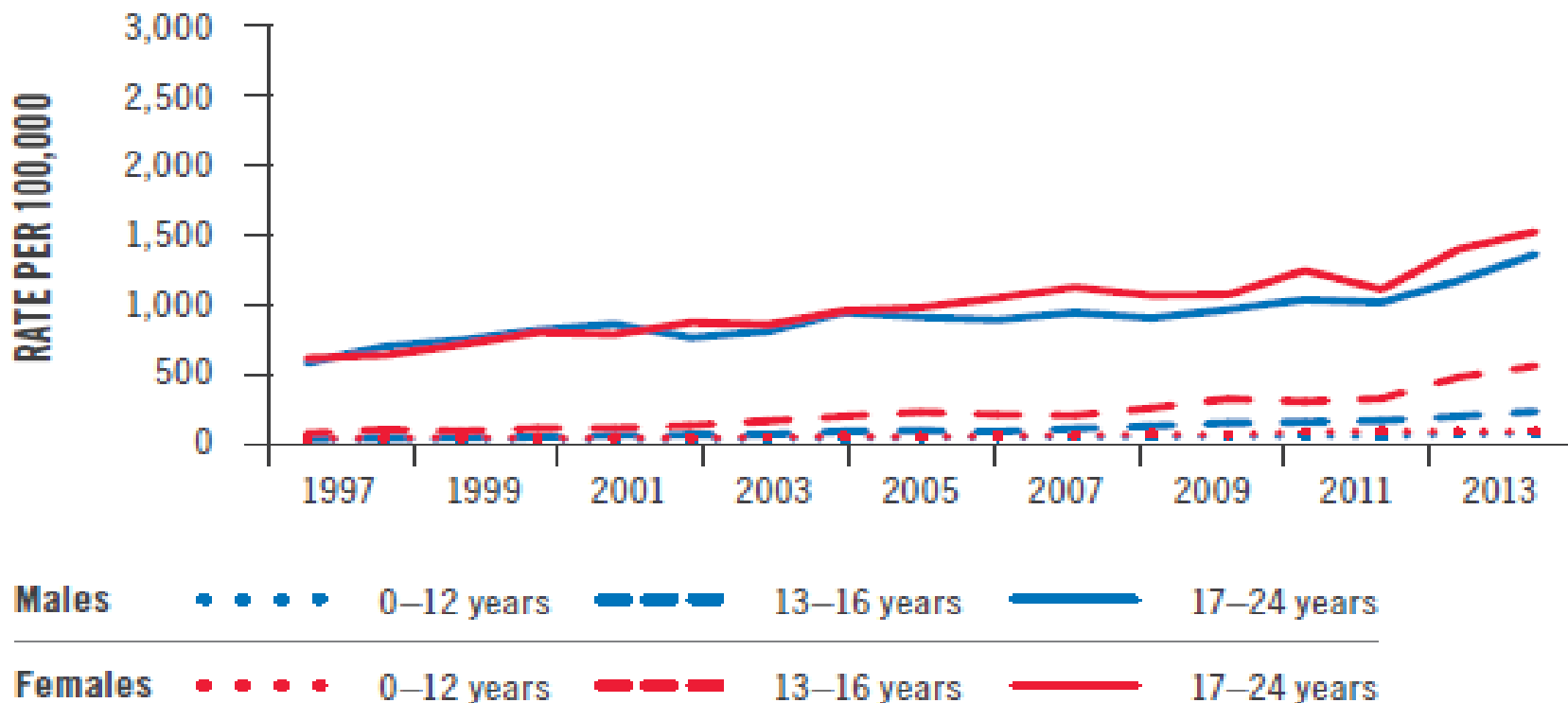
---

- NSW Mental Health Commission strategic plan and the Government response
- Increased mental health funding to GPs, private providers and the Primary Health Care sector
- Increase in mental health services being provided by the non-government sector
- State mental health services providing care at the “pointy end”
- A changing funding environment for health services

# What does the data tell us?

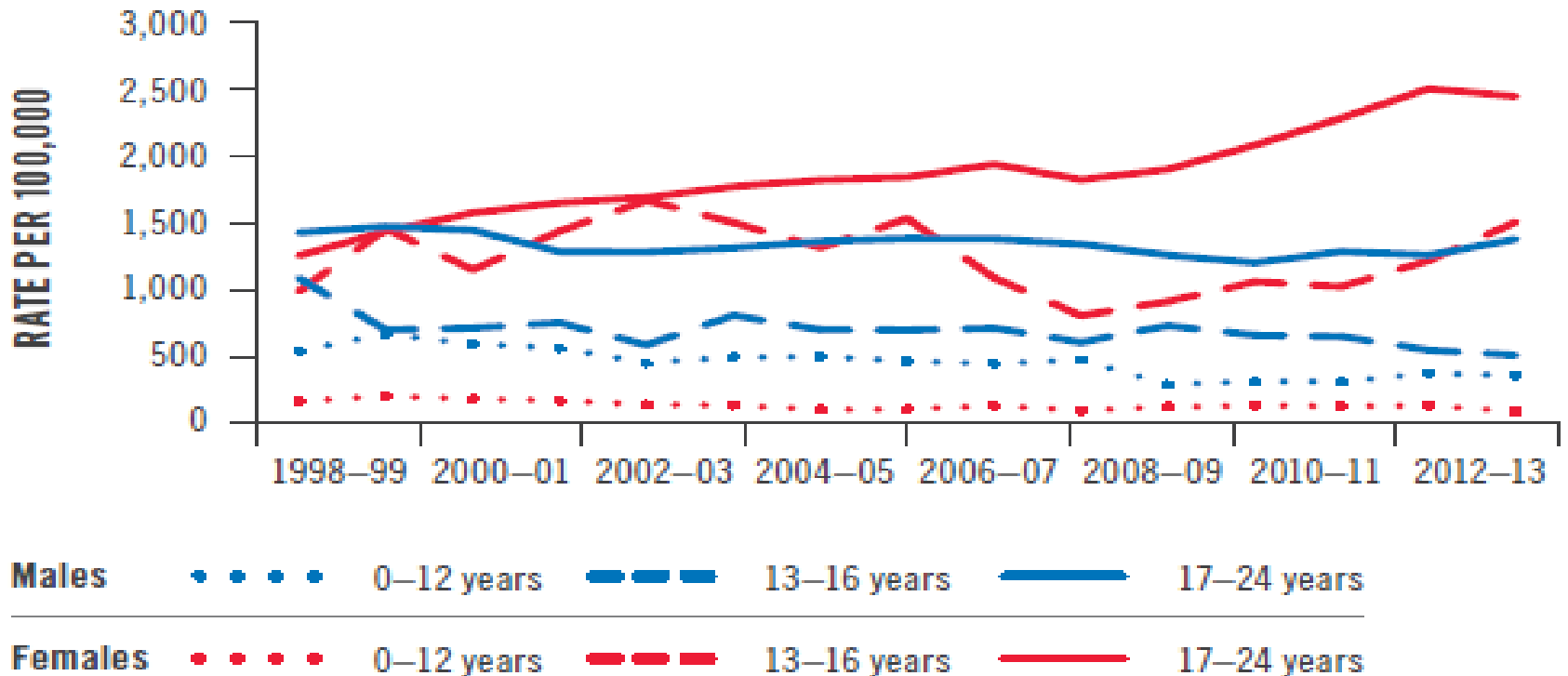


**FIGURE 3.30:** Emergency department visits for mental health problems, NSW



Source: NSW Emergency Department Data Collection

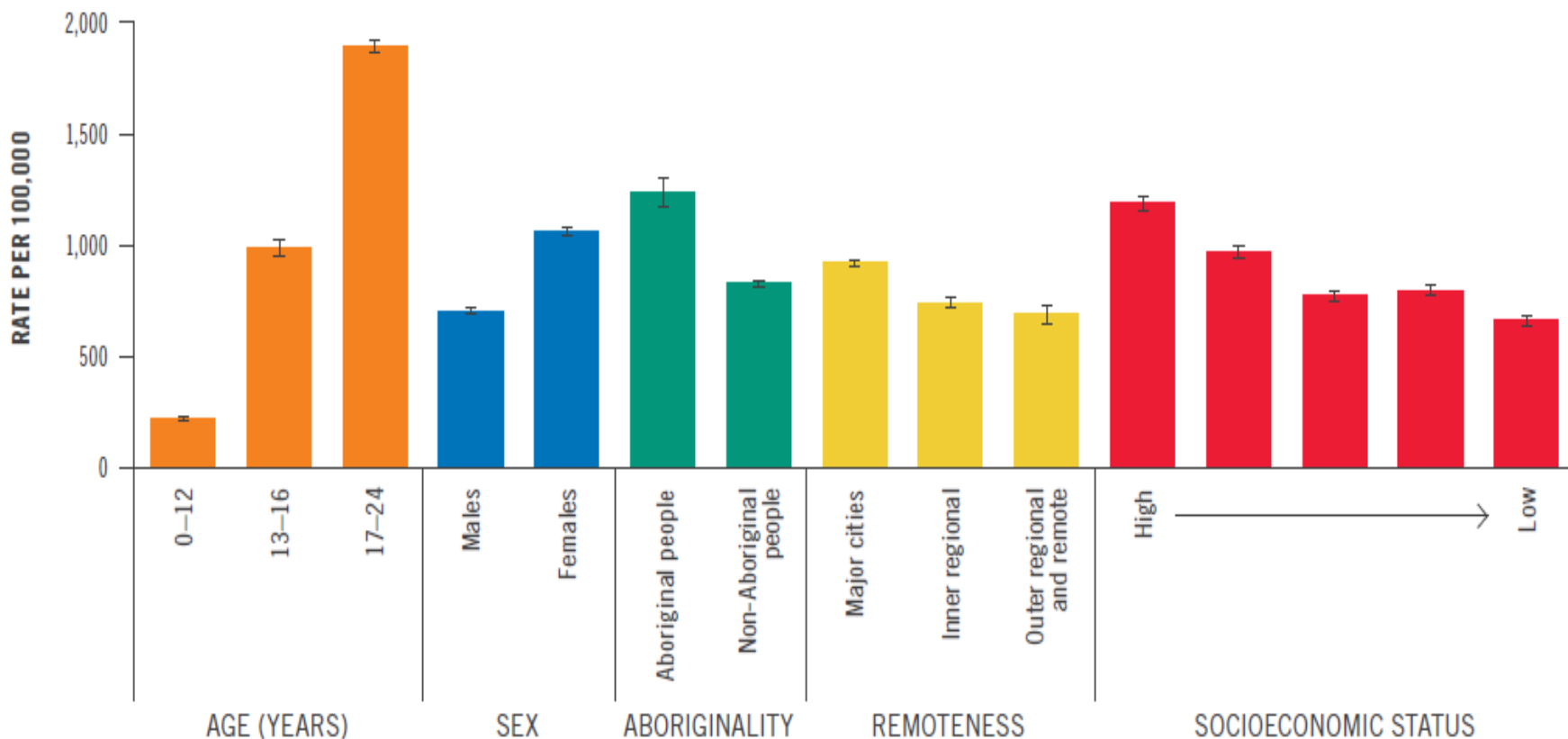
**FIGURE 3.31: Hospitalisations due to mental health problems, NSW**



Source: NSW Admitted Patient Data Collection

Source: Centre for Epidemiology and Evidence. The Health of Children and Young People in NSW: Report of the Chief Health Officer 2014. Sydney: NSW Ministry of Health, 2014

**FIGURE 3.32: Hospitalisations due to mental health problems, NSW, 2012–13**



Source: NSW Admitted Patient Data Collection

Source: Centre for Epidemiology and Evidence. The Health of Children and Young People in NSW: Report of the Chief Health Officer 2014. Sydney: NSW Ministry of Health, 2014

# What you tell us....

---

- Feedback from clinicians and managers from most LHDs and across multiple specialties have said....
  - Child and adolescent mental health presentations are increasing
  - They stay longer in ED than other patient cohorts
  - There are barriers in accessing specialist assessment and treatment
  - Patient presentations are complex and diverse



**Working in partnership**

---

**We need a  
Whole of Health solution**

# Why are we here?

---

**A/Professor Beth Kotzé**

Director, MH-Children and Young People (MH-CYP)  
Mental Health Drug and Alcohol Office (MHDAO)